

DISTRICT I  
1225 N. FRENCH DR., HOBBS, NM 88240

State of New Mexico  
Energy, Minerals and Natural Resources Department

MAY 09 2014

DISTRICT II  
1301 W. GRAND AVENUE, ARTESIA, NM 88210

OIL CONSERVATION DIVISION  
1220 SOUTH ST. FRANCIS DR.  
Santa Fe, New Mexico 87505

RECEIVED

Form C-102  
Revised October 12, 2005  
Submit to Appropriate District Office  
State Lease - 4 Copies  
Fee Lease - 3 Copies

DISTRICT III  
1000 Rio Brazos Rd., Aztec, NM 87410

DISTRICT IV  
1220 S. ST. FRANCIS DR., SANTA FE, NM 87505

## WELL LOCATION AND ACREAGE DEDICATION PLAT

☐ AMENDED REPORT

API Number <b>30-025-41839</b>	Pool Code <b>50350</b>	Pool Name <b>Pemrose Skelly; Brayburg</b>
Property Code <b>2690</b>	Property Name <b>W.T. MCCOMACK</b>	Well Number <b>30</b>
OGRID No. <b>4323</b>	Operator Name <b>CHEVRON USA INC.</b>	Elevation <b>3454'</b>

## Surface Location

UL or lot No.	Section	Township	Range	Lot Idn	Feet from the	North/South line	Feet from the	East/West line	County
<b>1</b>	<b>32</b>	<b>21-S</b>	<b>37-E</b>		<b>1515</b>	<b>SOUTH</b>	<b>330</b>	<b>EAST</b>	<b>LEA</b>

## Bottom Hole Location if Different From Surface

UL or lot No.	Section	Township	Range	Lot Idn	Feet from the	North/South line	Feet from the	East/West line	County

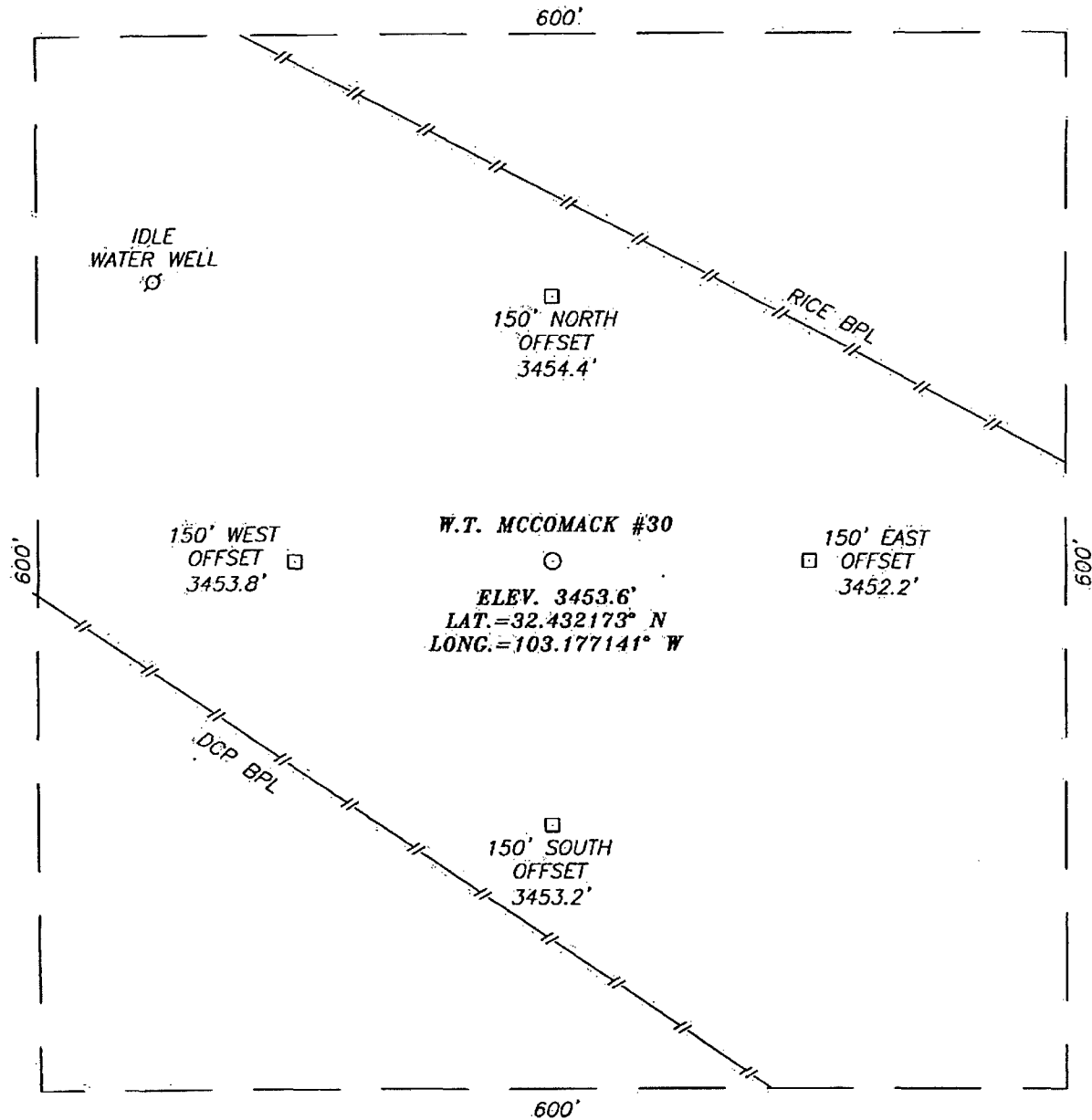
Dedicated Acres <b>40</b>	Joint or Infill	Consolidation Code	Order No. <b>NSL-6017</b>
------------------------------	-----------------	--------------------	------------------------------

NO ALLOWABLE WILL BE ASSIGNED TO THIS COMPLETION UNTIL ALL INTERESTS HAVE BEEN CONSOLIDATED  
OR A NON-STANDARD UNIT HAS BEEN APPROVED BY THE DIVISION

<p>GEODETIC COORDINATES NAD 27 NME Y=522868.8 N X=856732.5 E LAT.=32.432173° N LONG.=103.177141° W</p>	<p><b>OPERATOR CERTIFICATION</b></p> <p>I hereby certify that the information herein is true and complete to the best of my knowledge and belief, and that this organization either owns a working interest or unleased mineral interest in the land including the proposed bottom hole location or has a right to drill this well at this location pursuant to a contract with an owner of such mineral or working interest, or to a voluntary pooling agreement or a compulsory pooling order heretofore entered by the division.</p> <p><i>Denise Pinkerton</i> 05/08/14 Signature Date <b>DENISE PINKERTON</b> Printed Name</p>
	<p><b>SURVEYOR CERTIFICATION</b></p> <p>I hereby certify that the well location shown on this plat was plotted from field notes of actual surveys made by me or under my supervision, and that the same is true and correct to the best of my belief.</p> <p><b>RONALD J. EIDSON</b> JANUARY 16, 2009 Date Surveyed Signature &amp; Seal of Professional Surveyor <i>Ronald J. Eidson</i> 5/12/09 89111-0031</p>
	<p>Certificate No. <b>GARY EIDSON 12641</b> <b>RONALD J. EIDSON 3239</b></p>

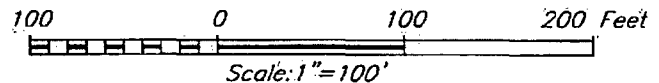
MAY 14 2014

**SECTION 32, TOWNSHIP 21 SOUTH, RANGE 37 EAST, N.M.P.M.,**  
 LEA COUNTY, NEW MEXICO



**DIRECTIONS TO LOCATION**

FROM THE INTERSECTION OF TEXAS ST. AND  
 LEGION RD., GO SOUTH ON LEGION ROAD APPROX.  
 0.2 MILES. THIS LOCATION IS APPROX. 300 FEET  
 WEST OF RIGHT OF WAY FENCE.



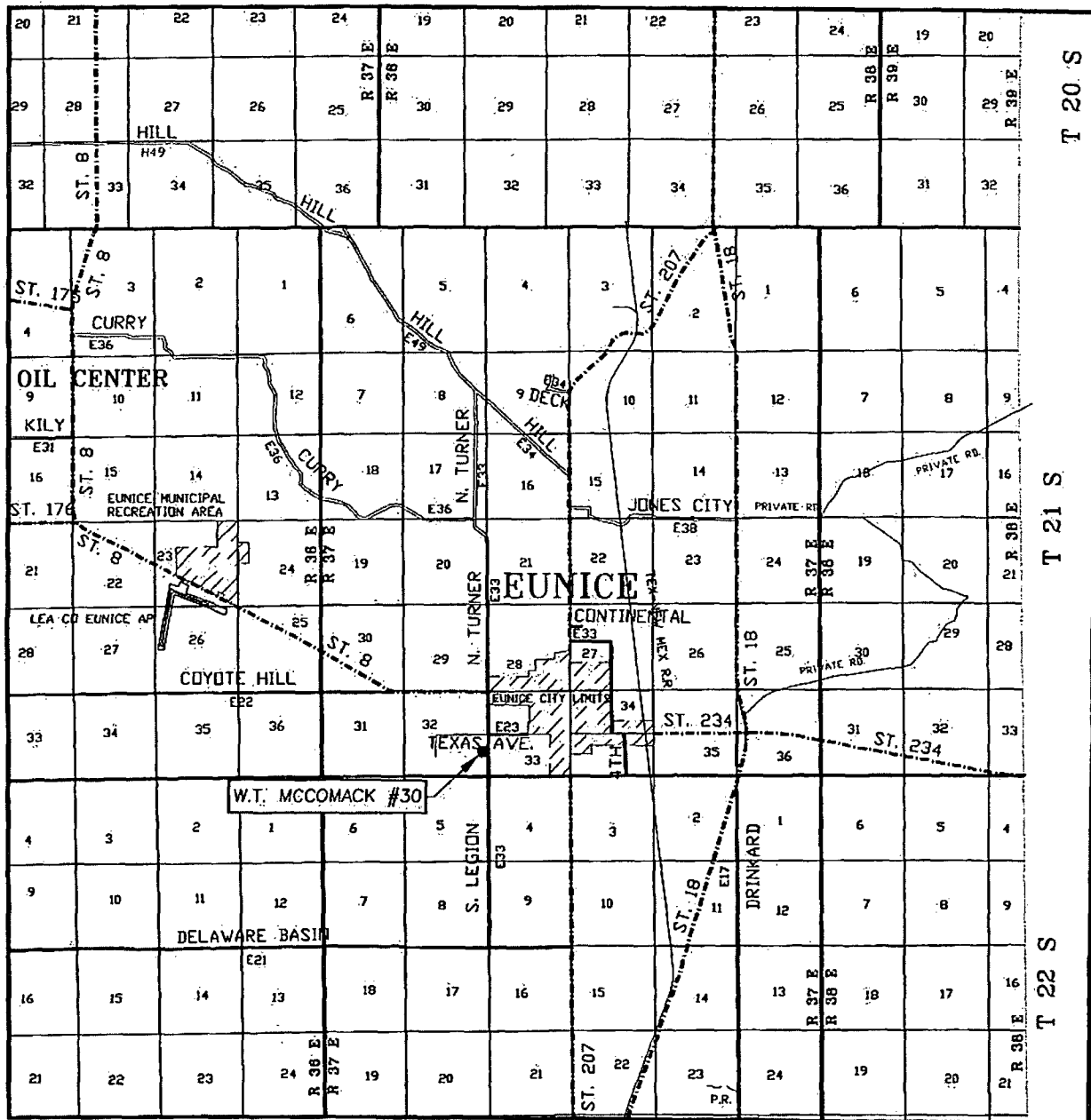
**CHEVRON USA INC.**

W.T. MCCOMACK #30 WELL  
 LOCATED 1515 FEET FROM THE SOUTH LINE  
 AND 330 FEET FROM THE EAST LINE OF SECTION 32,  
 TOWNSHIP 21 SOUTH, RANGE 37 EAST, N.M.P.M.,  
 LEA COUNTY, NEW MEXICO.

Survey Date: 1/16/09	Sheet 1 of 1 Sheets
W.O. Number: 09.11.0031	Dr By: LA
Date: 1/24/09	09110031
	Scale: 1"=100'

PROVIDING SURVEYING SERVICES  
 SINCE 1946  
**JOHN WEST SURVEYING COMPANY**  
 412 N. DAL PASO  
 HOBBS, N.M. 88240  
 (575) 393-3117

## VICINITY MAP



SCALE: 1" = 2 MILES

SEC. 32 TWP. 21-S RGE. 37-E

SURVEY N.M.P.M.

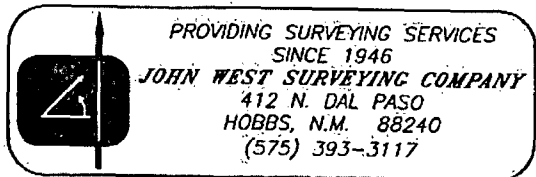
COUNTY LEA STATE NEW MEXICO

DESCRIPTION 1515' FSL & 330' FEL

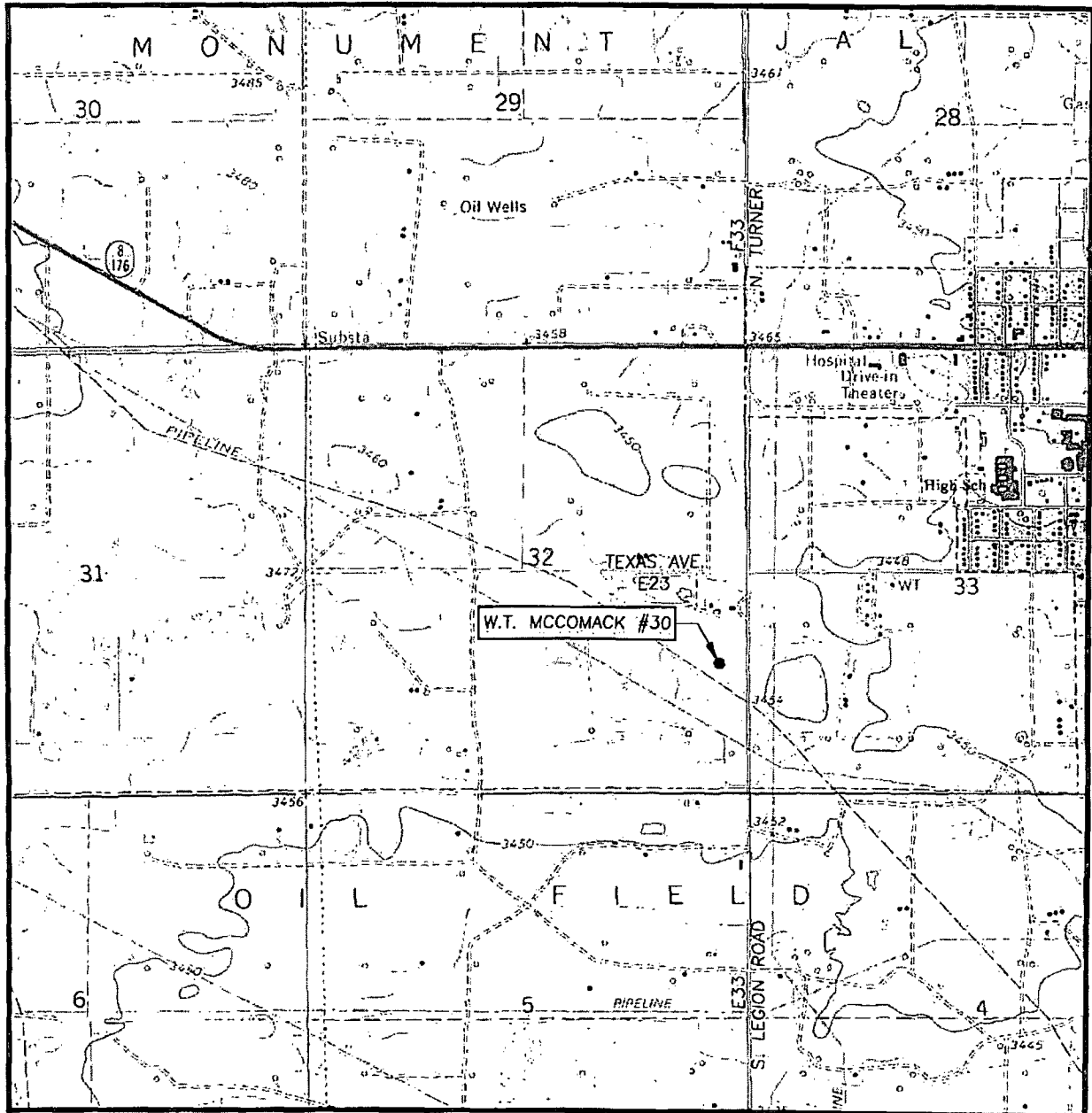
ELEVATION 3454'

OPERATOR CHEVRON USA INC.

LEASE W.T. MCCOMACK



# LOCATION VERIFICATION MAP



SCALE: 1" = 2000'

CONTOUR INTERVAL:  
EUNICE, N.M. - 10'

SEC. 32 TWP. 21-S RGE. 37-E

SURVEY N.M.P.M.

COUNTY LEA STATE NEW MEXICO

DESCRIPTION 1515' FSL & 330' FEL

ELEVATION 3454'

OPERATOR CHEVRON USA INC.

LEASE W.T. MCCOMACK

U.S.G.S. TOPOGRAPHIC MAP  
EUNICE, N.M.

