

District I
1625 N. French Dr., Hobbs, NM 88240
Phone: (505) 293-6161 Fax: (505) 293-0720
District II
811 S. First St., Artesia, NM 88210
Phone: (505) 748-1253 Fax: (505) 748-1254
District III
1000 Rio Brazos Road, Aztec, NM 87410
Phone: (505) 334-6178 Fax: (505) 334-6170
District IV
1220 S. St. Francis Dr., Santa Fe, NM 87505
Phone: (505) 476-3460 Fax: (505) 476-3462

HOBBS OCD
MAY 19 2014
RECEIVED

State of New Mexico
Energy, Minerals & Natural Resources Department
OIL CONSERVATION DIVISION
1220 South St. Francis Dr.
Santa Fe, NM 87505

Form C-102
Revised August 1, 2011
Submit one copy to appropriate
District Office

☐ AMENDED REPORT

WELL LOCATION AND ACREAGE DEDICATION PLAT

¹ API Number 30-025-41864	² Pool Code 97922	³ Pool Name WC-025-0652234216 BONE SPRING
⁴ Property Code 30863	⁵ Property Name GAUCHO UNIT	
¹⁰ OGRID No. 6137	⁸ Operator Name DEVON ENERGY PRODUCTION COMPANY, L.P.	
		⁶ Well Number 17H
		⁹ Elevation 3446.5

¹⁰ Surface Location

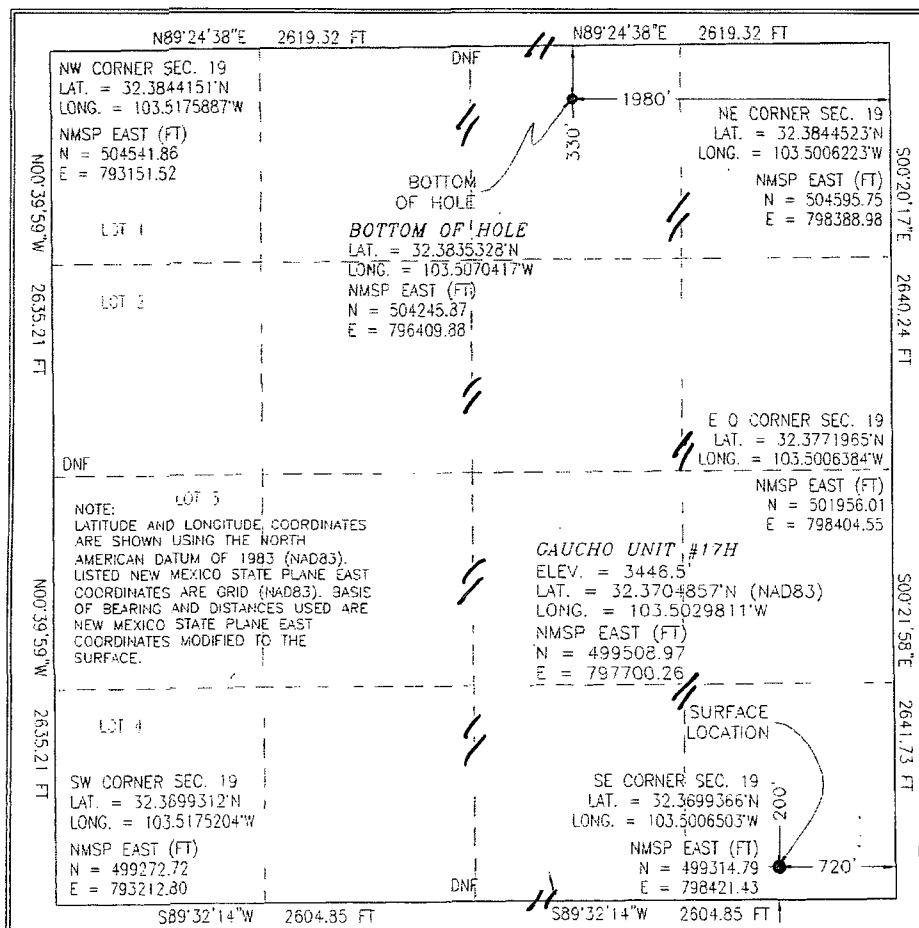
UL or lot no.	Section	Township	Range	Lot Idn	Feet from the	North/South line	Feet from the	East/West line	County
P	19	22 S	34 E		200	SOUTH	720	EAST	LEA

¹¹ Bottom Hole Location If Different From Surface

UL or lot no.	Section	Township	Range	Lot Idn	Feet from the	North/South line	Feet from the	East/West line	County
B	19	22 S	34 E		330	NORTH	1980	EAST	LEA

¹² Dedicated Acres 160	¹³ Joint or Infill	¹⁴ Consolidation Code	¹⁵ Order No.
---	-------------------------------	----------------------------------	-------------------------

No allowable will be assigned to this completion until all interests have been consolidated or a non-standard unit has been approved by the division.

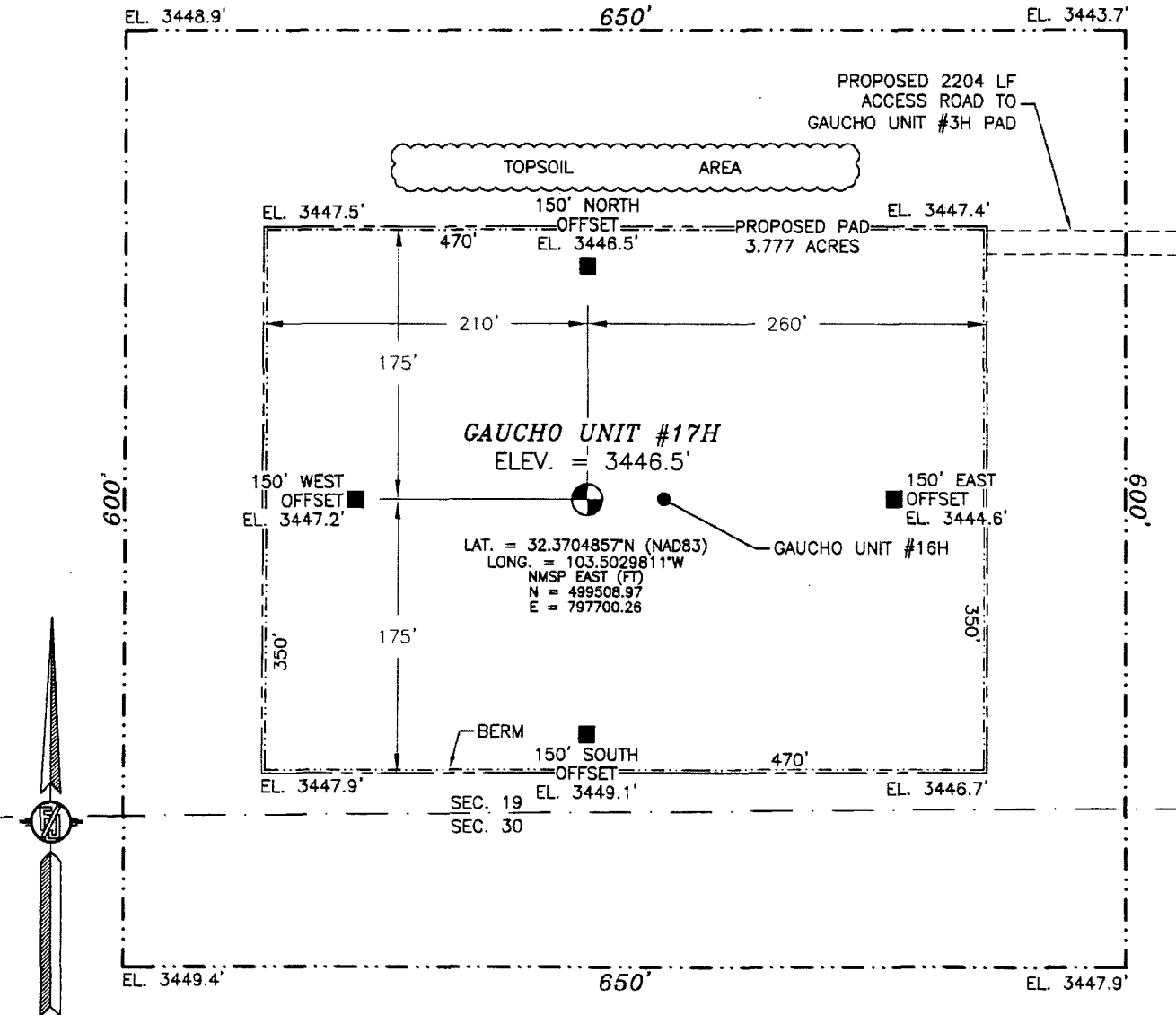


17 OPERATOR CERTIFICATION	
I hereby certify that the information contained herein is true and complete to the best of my knowledge and belief, and that this organization either owns a working interest or released mineral interest in the land including the proposed bottom hole location or has a right to drill this well at this location pursuant to a contract with an owner of such a mineral or working interest, or to a voluntary pooling agreement or a compulsory pooling order previously entered by the division.	
Signature David H. Cook	Date 7/25/2013
Printed Name David H. Cook	
E-mail Address david.cook@dmv.com	
18 SURVEYOR CERTIFICATION	
I hereby certify that the well location shown on this plat was plotted from field notes of actual surveys made by me or under my supervision, and that the same is true and correct to the best of my belief.	
Date of Survey JULY 19, 2013	
Signature and Seal of Professional Surveyor 12797	
Certificate Number 12797	
SURVEY NO. 2132	

MAY 20 2014

SECTION 19, TOWNSHIP 22 SOUTH, RANGE 34 EAST, N.M.P.M.
LEA COUNTY, STATE OF NEW MEXICO
SITE MAP

NOTE: LATITUDE AND LONGITUDE COORDINATES ARE SHOWN USING THE NORTH AMERICAN DATUM OF 1983 (NAD83). LISTED NEW MEXICO STATE PLANE EAST COORDINATES ARE GRID (NAD83). BASIS OF BEARING AND DISTANCES USED ARE NEW MEXICO STATE PLANE EAST COORDINATES MODIFIED TO THE SURFACE



0 10 50 100 200
SCALE 1" = 100'

DIRECTIONS TO LOCATION

FROM THE INTERSECTION OF STATE HIGHWAY 128 AND DELAWARE BASIN ROAD GO NORTH AND EAST ON DELAWARE BASIN ROAD APPROX. 9.5 MILES TO A LEASE ROAD ON LEFT (NORTH) TURN NORTH ON LEASE ROAD GO APPROX. 3.4 MILES TO EXISTING PAD ON LEFT (WEST) AT THE MIDDLE SOUTH EDGE OF PAD IS A ROAD LATH WITH RED AND WHITE FLAGGING, GO SOUTH 100' TO A ROAD LATH PI RIGHT, GO RIGHT (WEST) FOLLOW ROAD LATHS APPROX. 0.4 MILES TO LOCATIONS.

DEVON ENERGY PRODUCTION COMPANY, L.P.
GAUCHO UNIT #17H

LOCATED 200 FT. FROM THE SOUTH LINE
AND 720 FT. FROM THE EAST LINE OF
SECTION 19, TOWNSHIP 22 SOUTH,
RANGE 34 EAST, N.M.P.M.
LEA COUNTY, STATE OF NEW MEXICO

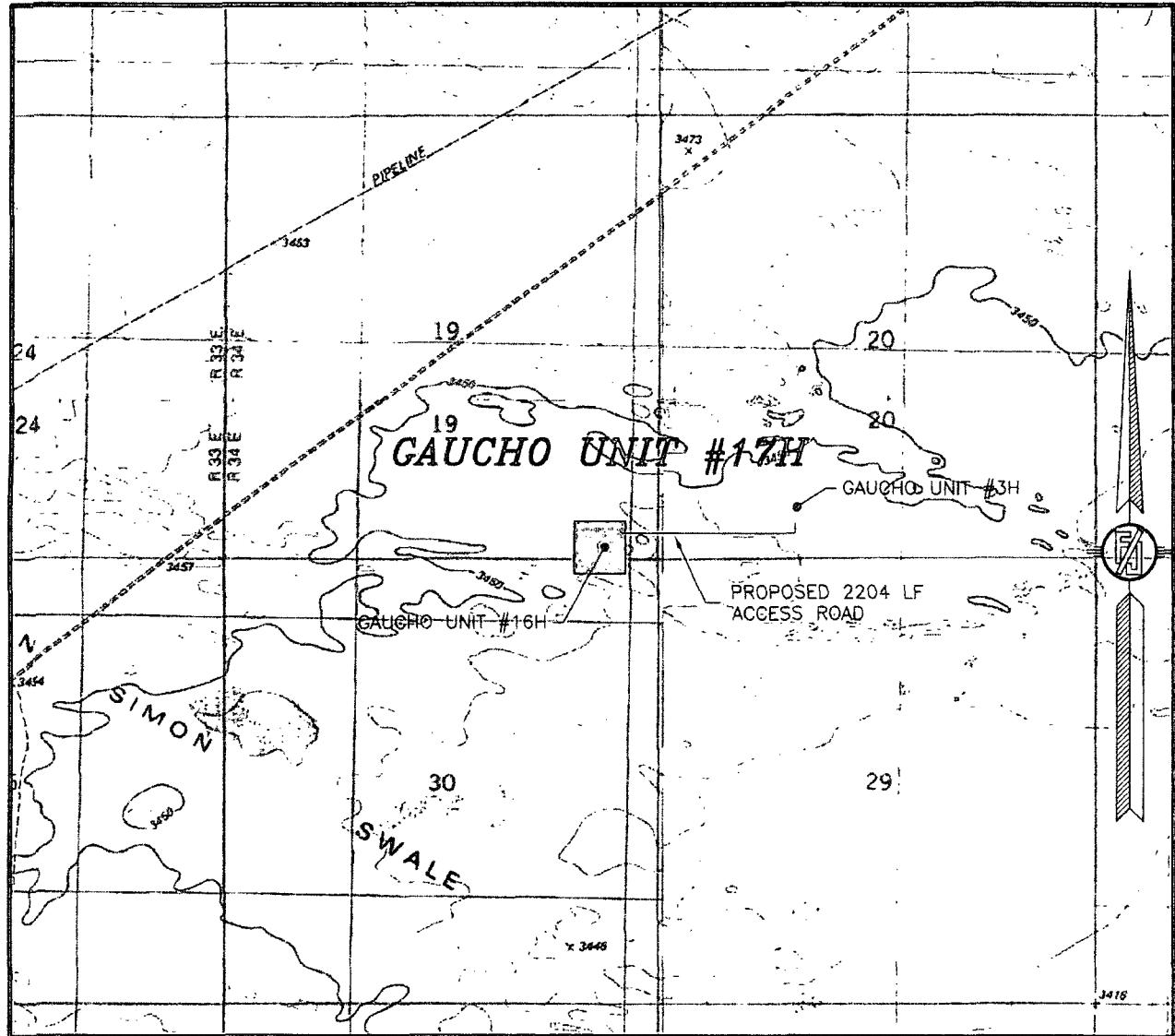
JULY 19, 2013

SURVEY NO. 2132

MADRON SURVEYING, INC. 301 SOUTH CANAL (575) 234-3341

CARLSBAD, NEW MEXICO

SECTION 19, TOWNSHIP 22 SOUTH, RANGE 34 EAST, N.M.P.M.
LEA COUNTY, STATE OF NEW MEXICO
LOCATION VERIFICATION MAP



USGS QUAD MAP:
SAN SIMON RANCH

NOT TO SCALE

DEVON ENERGY PRODUCTION COMPANY, L.P.
GAUCHO UNIT #17H

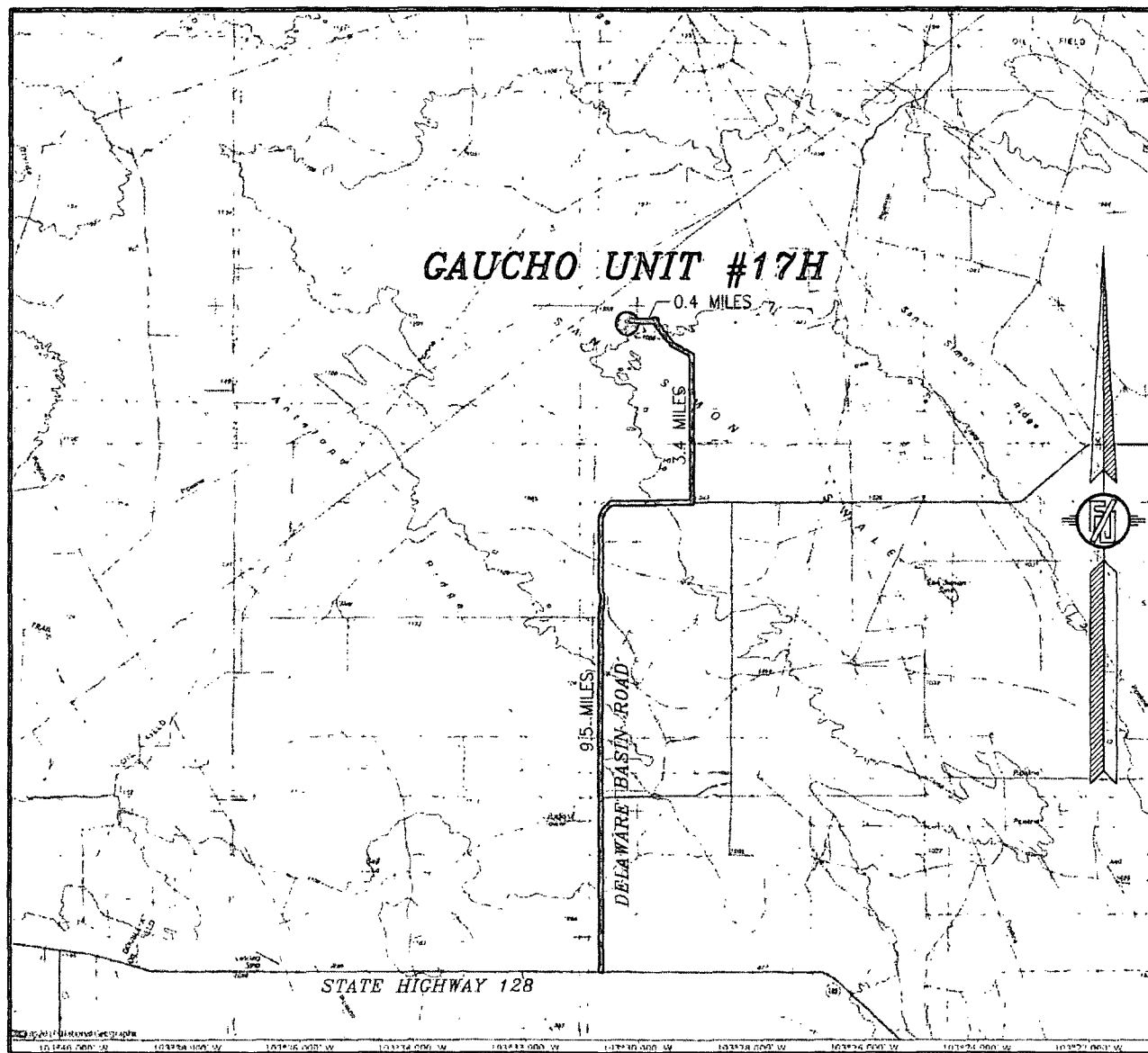
LOCATED 200 FT. FROM THE SOUTH LINE
AND 720 FT. FROM THE EAST LINE OF
SECTION 19, TOWNSHIP 22 SOUTH,
RANGE 34 EAST, N.M.P.M.
LEA COUNTY, STATE OF NEW MEXICO

JULY 19, 2013

SURVEY NO. 2132

MADRON SURVEYING, INC. 301 SOUTH CANAL (575) 234-3341 CARLSBAD, NEW MEXICO

SECTION 19, TOWNSHIP 22 SOUTH, RANGE 34 EAST, N.M.P.M.
LEA COUNTY, STATE OF NEW MEXICO
VICINITY MAP



NOT TO SCALE

DEVON ENERGY PRODUCTION COMPANY, L.P.

GAUCHO UNIT #17H

LOCATED 200 FT. FROM THE SOUTH LINE
AND 720 FT. FROM THE EAST LINE OF
SECTION 19, TOWNSHIP 22 SOUTH,
RANGE 34 EAST, N.M.P.M.
LEA COUNTY, STATE OF NEW MEXICO

JULY 19, 2013

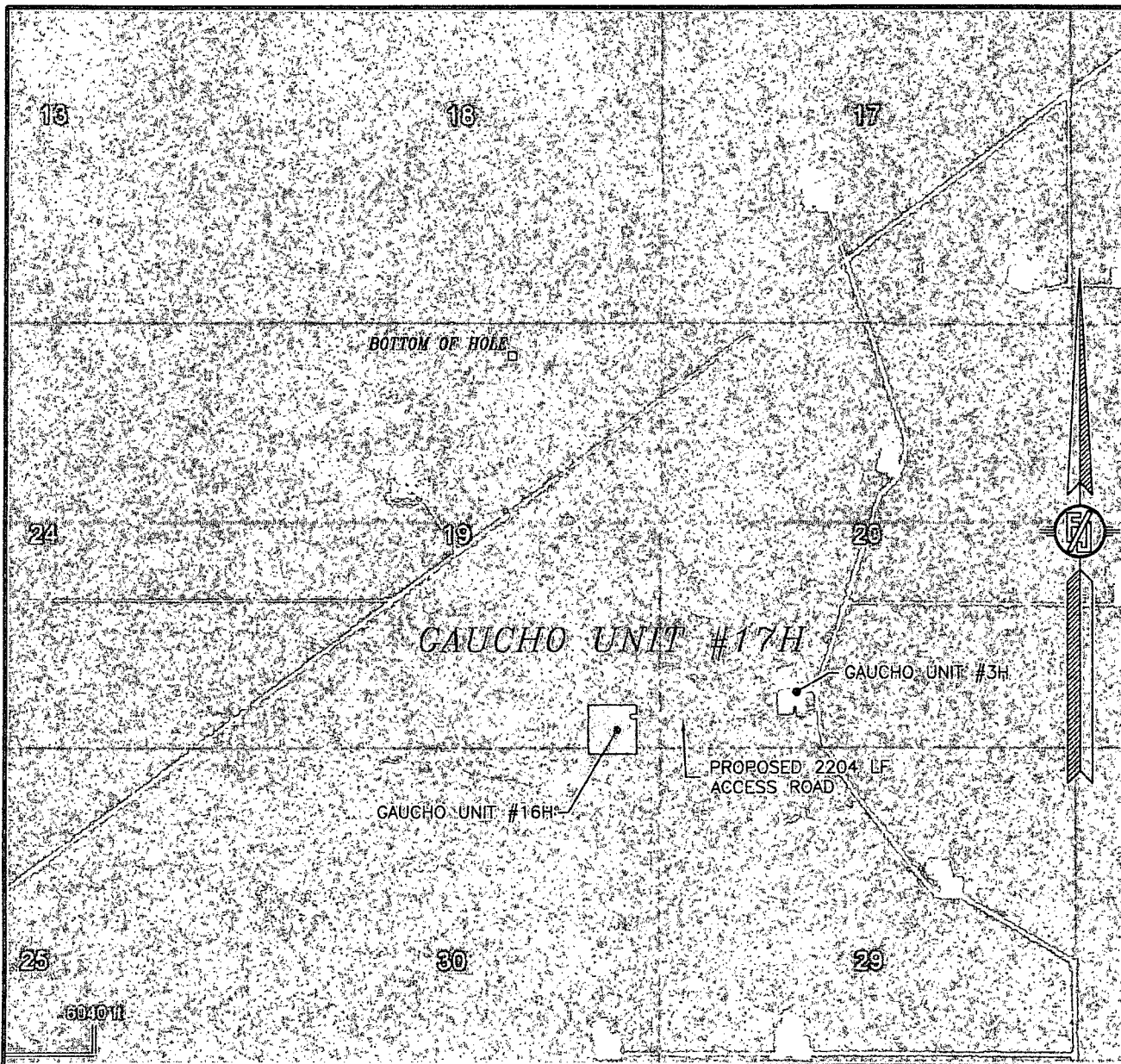
DIRECTIONS TO LOCATION

FROM THE INTERSECTION OF STATE HIGHWAY 128 AND DELAWARE BASIN ROAD GO NORTH AND EAST ON DELAWARE BASIN ROAD APPROX. 9.5 MILES TO A LEASE ROAD ON LEFT (NORTH) TURN NORTH ON LEASE ROAD GO APPROX. 3.4 MILES TO EXISTING PAD ON LEFT (WEST) AT THE MIDDLE SOUTH EDGE OF PAD IS A ROAD LATH WITH RED AND WHITE FLAGGING, GO SOUTH 100' TO A ROAD LATH PI RIGHT, GO RIGHT (WEST) FOLLOW ROAD LATHS APPROX. 0.4 MILES TO LOCATIONS.

MADRON SURVEYING, INC. 301 SOUTH CANAL (575) 234-3341

SURVEY NO. 2132
CARLSBAD, NEW MEXICO

SECTION 19, TOWNSHIP 22 SOUTH, RANGE 34 EAST, N.M.P.M.
LEA COUNTY, STATE OF NEW MEXICO
AERIAL PHOTO



NOT TO SCALE
AERIAL PHOTO:
GOOGLE EARTH
MARCH 2012

DEVON ENERGY PRODUCTION COMPANY, L.P.

GAUCHO UNIT #17H

LOCATED 200 FT. FROM THE SOUTH LINE
AND 720 FT. FROM THE EAST LINE OF
SECTION 19, TOWNSHIP 22 SOUTH,
RANGE 34 EAST, N.M.P.M.
LEA COUNTY, STATE OF NEW MEXICO

JULY 19, 2013

SURVEY NO. 2132

MADRON SURVEYING, INC. 301 SOUTH CANAL CARLSBAD, NEW MEXICO
(575) 234-3341

ONE MILE RADIUS MAP

GAUCHO UNIT 17H
T22S - R34E

SHL to nearest lease line: 200 ft.
SHL to nearest wellbore: 2407 ft. NE.
SHL to BHL 4920 ft.
BHL to nearest wellbore: 1960 ft. SW.

GAUCHO UNIT 7H 3535 ft. E.
EL ALTO GRANDE 1-Y 2394 ft. W.
ENGLE 20 FEDERAL 1 2680 ft. E.*

*All distances are estimated.

18

17

GAUCHO UNIT 7H

RICKER 1

GAUCHO UNIT 6H

1 MILE

BHL

ENGLE '20' FEDERAL 1

EL ALTO GRANDE UT 1

EL ALTO GRANDE 1-Y

19

GAUCHO UNIT 4

20

GAUCHO UNIT 3

SHL

1 MILE

GAUCHO UNIT 17H

GAUCHO UNIT 1

30

29

GAUCHO UNIT 5

GAUCHO UNIT 2

GAUCHO UNIT 2Y

DEVON

GAUCHO UNIT 17H