

HOBBS OCD

MAY 19 2014

RECEIVED

Form C-102
Revised August 1, 2011
Submit one copy to appropriate
District Office
☐ AMENDED REPORT

¹ API Number 30-025-4864		² Pool Code 98075	³ Pool Name WC-025 G-08 52335270; BONE SPR.	
⁴ Property Code 213258	⁵ Property Name MILO 27 FEDERAL			⁶ Well Number 1H
⁷ OGRID No. 6137	⁸ Operator Name DEVON ENERGY PRODUCTION COMPANY, L.P.			⁹ Elevation 3452.2

11 Bottom Hole Location If Different From Surface									
U1. or lot no.	Section	Township	Range	Lot Idn	Feet from the	North/South line	Feet from the	East/West line	County
B	27	23 S	35 E		330	NORTH	1980	EAST	LEA
12 Dedicated Acres 160	13 Joint or Infill	14 Consolidation Code		15 Order No.					

[illegible]

I hereby certify that the information contained herein is true and complete to the best of my knowledge and belief, and that this organization either owns a working interest or undivided mineral interest in the land including the proposed bottom hole location or has a right to drill this well at this location pursuant to a contract with an owner of such a mineral or working interest, or to a voluntary pooling agreement or a compulsory pooling order heretofore entered by the division.

Signature _____ Date _____

Printed Name _____

E-mail Address _____

I hereby certify that the well location shown on this plat was plotted from field notes of actual surveys made by me or under my supervision, and that the same is true and correct to the best of my belief.

Date of Survey: _____

1000

RECEIVED

~~_____~~

Signature and Seal of Professional Surveyor

Certificate Number: ~~XXXXXXXXXX~~ JELIMON E. LARAMILLO, PLS 12797

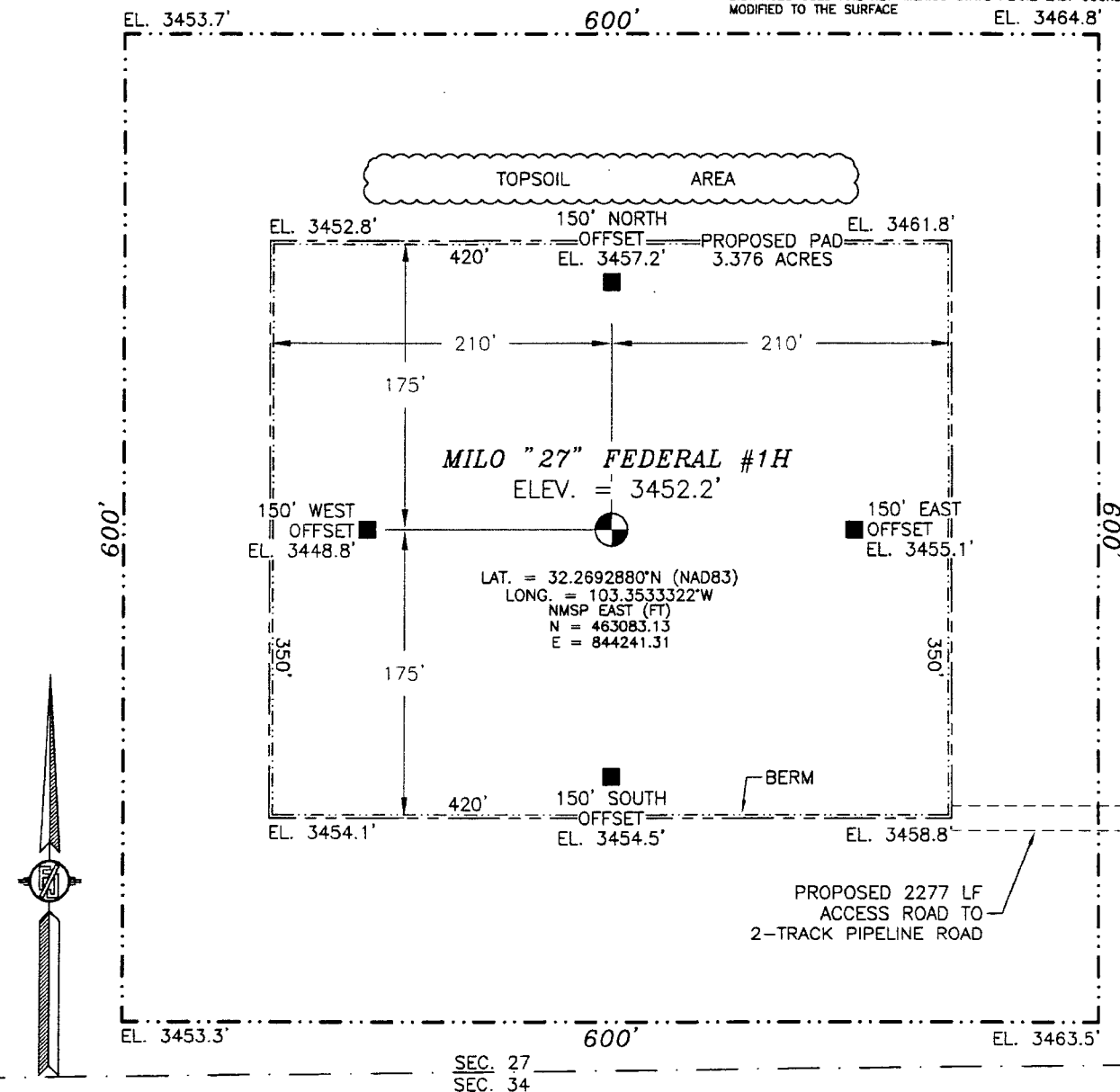
SURVEY NO. 2163

MAY 20 2014

7m.

SECTION 27, TOWNSHIP 23 SOUTH, RANGE 35 EAST, N.M.P.M.
LEA COUNTY, STATE OF NEW MEXICO
SITE MAP

NOTE: LATITUDE AND LONGITUDE COORDINATES ARE SHOWN USING THE NORTH AMERICAN DATUM OF 1983 (NAD83). LISTED NEW MEXICO STATE PLANE EAST COORDINATES ARE GRID (NAD83). BASIS OF BEARING AND DISTANCES USED ARE NEW MEXICO STATE PLANE EAST COORDINATES MODIFIED TO THE SURFACE



010 50 100 200

SCALE 1" = 100'

DIRECTIONS TO LOCATION

FROM THE INTERSECTION OF STATE HIGHWAY 18 AND PAVED CR J7 (COOPER CEMETERY ROAD) GO WEST ON CR J7 3.0 MILES TO INTERSECTION OF DEEP WELLS ROAD WHERE COUNTY MAINTENANCE ENDS AND CONTINUE WEST ON CALICHE 20' LEASE ROAD 2.2 MILES, BEND LEFT AND GO SOUTH 0.25 MILES, BEND RIGHT AND GO WEST 0.25 MILES, BEND RIGHT AND GO NORTHWEST 0.35 MILES, BEND LEFT AND GO WEST 1.4 MILES, TURN RIGHT AND GO NORTH 1.0 MILES, TURN LEFT AND GO WEST 1.0 MILES, TURN RIGHT AND GO NORTH 1.0 MILES AND CONTINUE NORTH ON 10' CALICHE ROAD 0.8 MILES, TURN LEFT ON 2-TRACK PIPELINE ROAD AND GO NORTHWEST 1.8 MILES TO A PROPOSED ROAD SURVEY AND FOLLOW FLAGS WEST 2277' TO THE SOUTHEAST CORNER OF PROPOSED PAD FOR THIS LOCATION.

SEC. 27
SEC. 34

DEVON ENERGY PRODUCTION COMPANY, L.P.

MILO "27" FEDERAL #1H

LOCATED 330 FT. FROM THE SOUTH LINE
AND 1980 FT. FROM THE EAST LINE OF
SECTION 27, TOWNSHIP 23 SOUTH,
RANGE 35 EAST, N.M.P.M.
LEA COUNTY, STATE OF NEW MEXICO

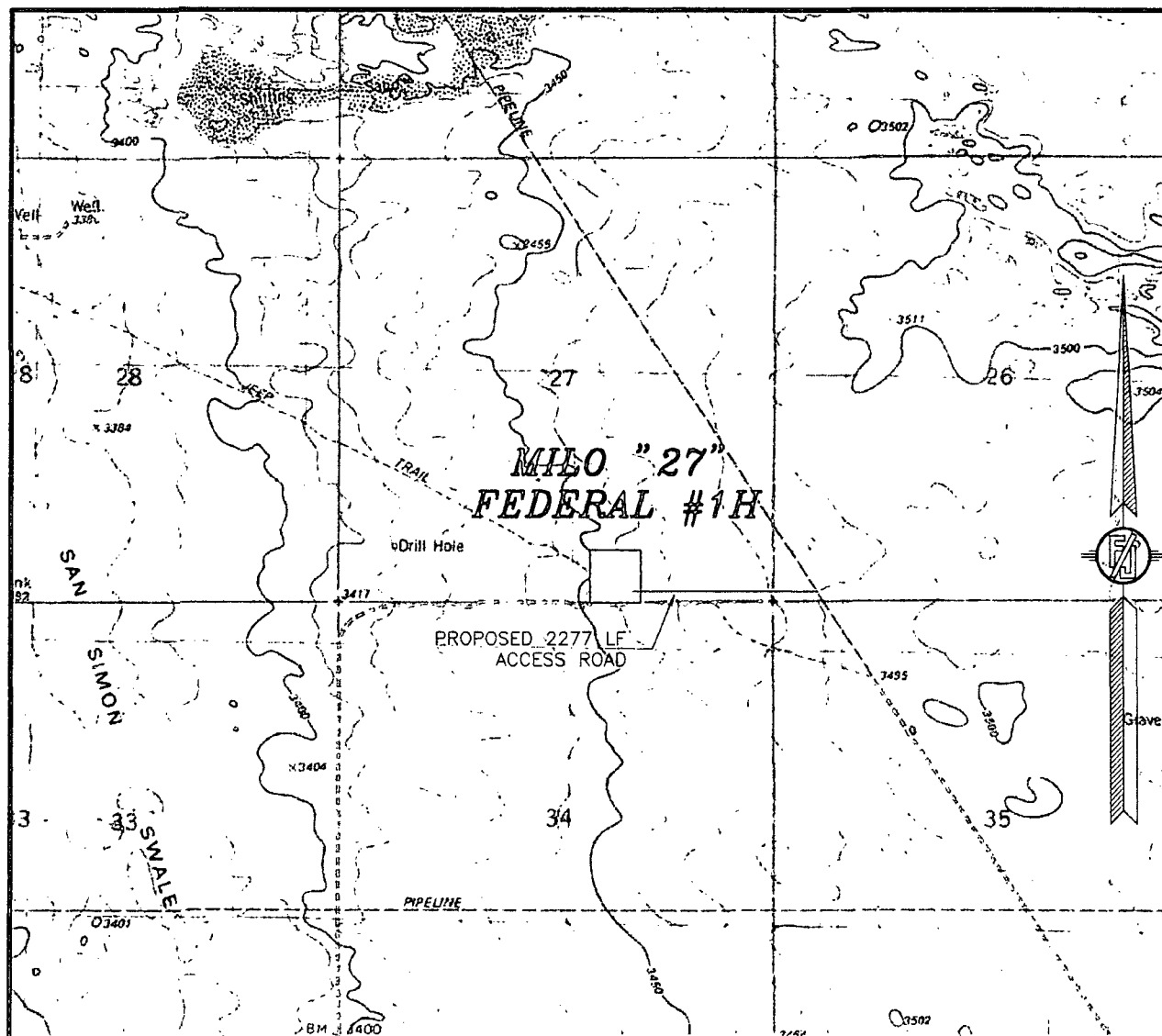
JULY 19, 2013

SURVEY NO. 2167

MADRON SURVEYING, INC. 301 SOUTH CANAL
(575) 234-3341

CARLSBAD, NEW MEXICO

SECTION 27, TOWNSHIP 23 SOUTH, RANGE 35 EAST, N.M.P.M.
LEA COUNTY, STATE OF NEW MEXICO
LOCATION VERIFICATION MAP



USGS QUAD MAP:
EAST LAKE

NOT TO SCALE

DEVON ENERGY PRODUCTION COMPANY, L.P.

MILO "27" FEDERAL #1H

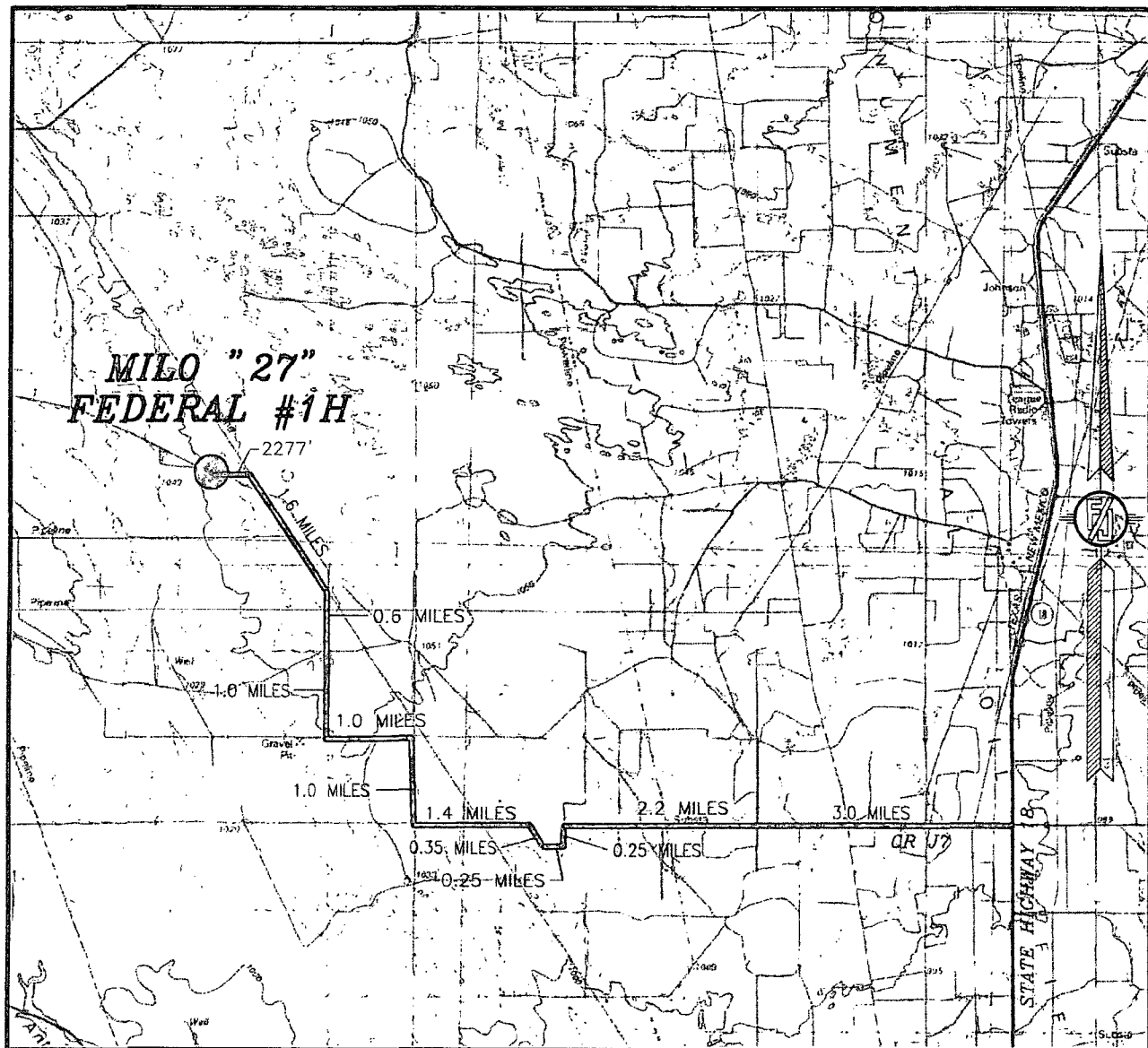
LOCATED 330 FT. FROM THE SOUTH LINE
AND 1980 FT. FROM THE EAST LINE OF
SECTION 27, TOWNSHIP 23 SOUTH,
RANGE 35 EAST, N.M.P.M.
LEA COUNTY, STATE OF NEW MEXICO

JULY 19, 2013

SURVEY NO. 2167

MADRON SURVEYING, INC. 301 SOUTH CANAL (575) 234-3341 CARLSBAD, NEW MEXICO

SECTION 27, TOWNSHIP 23 SOUTH, RANGE 35 EAST, N.M.P.M.
LEA COUNTY, STATE OF NEW MEXICO
VICINITY MAP



NOT TO SCALE

DEVON ENERGY PRODUCTION COMPANY, L.P.

MILO "27" FEDERAL #1H
LOCATED 330 FT. FROM THE SOUTH LINE
AND 1980 FT. FROM THE EAST LINE OF
SECTION 27, TOWNSHIP 23 SOUTH,
RANGE 35 EAST, N.M.P.M.
LEA COUNTY, STATE OF NEW MEXICO

JULY 19, 2013

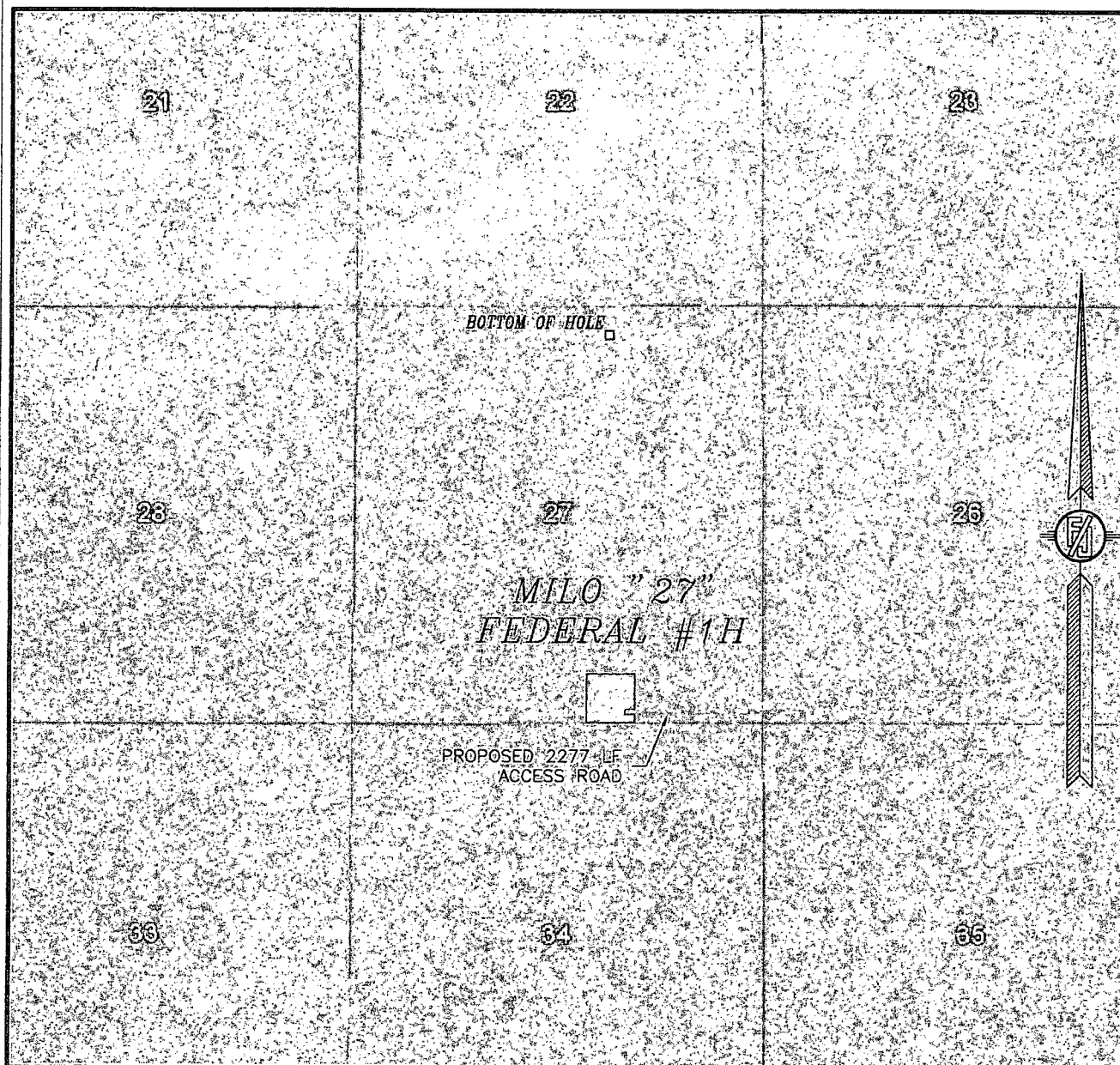
DIRECTIONS TO LOCATION

DIRECTIONS TO LOCATION
FROM THE INTERSECTION OF STATE HIGHWAY 18 AND PAVED CR J7
(COOPER CEMETERY ROAD) GO WEST ON CR J7 3.0 MILES TO
INTERSECTION OF DEEP WELLS ROAD WHERE COUNTY MAINTENANCE
ENDS AND CONTINUE WEST ON CALICHE 20' LEASE ROAD 2.2 MILES,
BEND LEFT AND GO SOUTH 0.25 MILES, BEND RIGHT AND GO WEST
0.25 MILES, BEND RIGHT AND GO NORTHWEST 0.35 MILES, BEND
LEFT AND GO WEST 1.4 MILES, TURN RIGHT AND GO NORTH 1.0
MILES, TURN LEFT AND GO WEST 1.0 MILES, TURN RIGHT AND GO
NORTH 1.0 MILES AND CONTINUE NORTH ON 10' CALICHE ROAD 0.6
MILES, TURN LEFT ON 2-TRACK PIPELINE ROAD AND GO NORTHWEST
1.6 MILES TO A PROPOSED ROAD SURVEY AND FOLLOW FLAGS WEST
2277' TO THE SOUTHEAST CORNER OF PROPOSED PAD FOR THIS
LOCATION.

SURVEY NO. 2167

MADRON SURVEYING, INC. 301 SOUTH CANAL (575) 234-3341 CARLSBAD, NEW MEXICO

SECTION 27, TOWNSHIP 23 SOUTH, RANGE 35 EAST, N.M.P.M.
LEA COUNTY, STATE OF NEW MEXICO
AERIAL PHOTO



NOT TO SCALE
AERIAL PHOTO:
GOOGLE EARTH
MARCH 2012

DEVON ENERGY PRODUCTION COMPANY, L.P.

MILO "27" FEDERAL #1H

LOCATED 330 FT. FROM THE SOUTH LINE
AND 1980 FT. FROM THE EAST LINE OF
SECTION 27, TOWNSHIP 23 SOUTH,
RANGE 35 EAST, N.M.P.M.
LEA COUNTY, STATE OF NEW MEXICO

JULY 19, 2013

SURVEY NO. 2167

MADRON SURVEYING, INC. 501 SOUTH CANAL CARLSBAD, NEW MEXICO
(575) 234-3341

MILO 27 FED 1H
T23S - R35E

SHL to nearest lease line: 330 ft.
SHL to nearest wellbore: 2650 ft. WNW.
SHL to BHL 4630 ft.
BHL to nearest wellbore: 5076 ft. SW.

REX WILLIAMS A-27 1 2636 ft. W.*

*All distances are estimated.

22

23

1 MILE

BHL

27

26

REX WILLIAMS A-27 1

1 MILE

SHL

MILO 27 FED 1H

34

35

DEVON

MILO 27 FED 1H