

DISTRICT I

1625 N. French Dr., Hobbs, NM 88240
Phone (505) 393-6161 Fax: (505) 393-0720

DISTRICT II

811 S. First St., Artesia, NM 88210
Phone (505) 748-1283 Fax: (505) 748-9720

DISTRICT III

1000 Rio Brazos Rd., Aztec, NM 87410
Phone (505) 834-8170 Fax: (505) 834-8170

DISTRICT IV

1220 S. St. Francis Dr., Santa Fe, NM 87505
Phone (505) 478-3400 Fax: (505) 478-3482

State of New Mexico
Energy, Minerals and Natural Resources Department

OIL CONSERVATION DIVISION

1220 South St. Francis Dr.
Santa Fe, New Mexico 87505

Form C-102

Revised August 1, 2011

HOBBS OGD

Submit one copy to appropriate
District Office

MAY 29 2014

WELL LOCATION AND ACREAGE DEDICATION PLAT RECEIVED AMENDED REPORT

API Number 30-025 - 41858	Pool Code 55610	Pool Name Schard Wildcat, Bone Spring
Property Code	Property Name TEAL 12 STATE	Well Number 2H
OGRID No. 215099	Operator Name CIMAREX ENERGY CO.	Elevation 3955

Surface Location

UL or lot No.	Section	Township	Range	Lot Idn	USAt from the	North/South line	USAt from the	East/West line	County
N	12	19 S	34 E		330	SOUTH	1980	WEST	LEA

Bottom Hole Location If Different From Surface

UL or lot No.	Section	Township	Range	Lot Idn	USAt from the	North/South line	USAt from the	East/West line	County
C	12	19 S	34 E		330	NORTH	1980	WEST	LEA

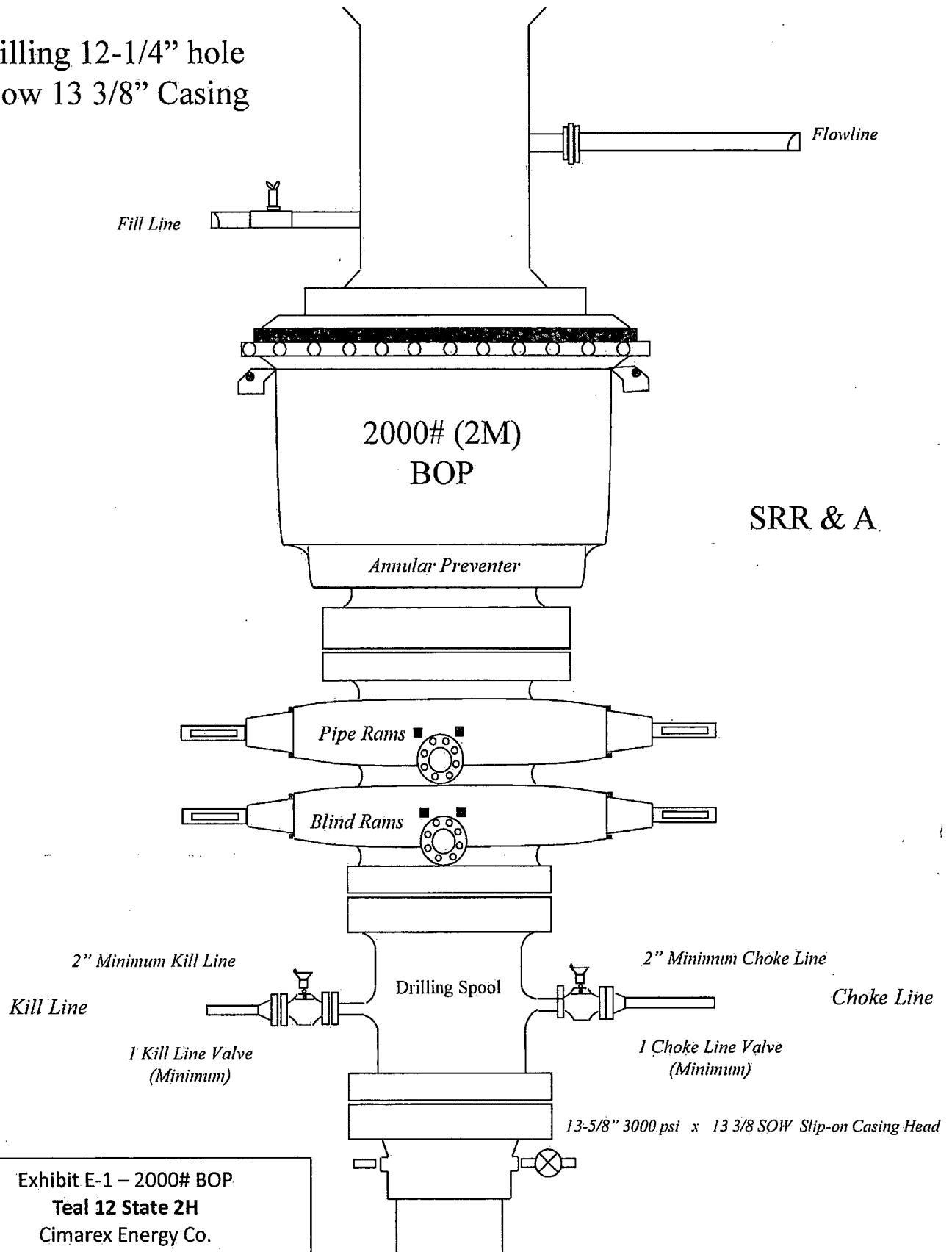
Dedicated Acres	Joint or Infill	Consolidation Code	Order No.
160			

NO ALLOWABLE WILL BE ASSIGNED TO THIS COMPLETION UNTIL ALL INTERESTS HAVE BEEN CONSOLIDATED
OR A NON-STANDARD UNIT HAS BEEN APPROVED BY THE DIVISION

<p>N: 612536.2 E: 790840.4 (NAD83)</p> <p>1980'</p> <p>B.H.</p> <p>330'</p> <p>N: 612536.5 E: 790496.6 (NAD83)</p> <p>4620.5'</p> <p>330'</p> <p>S.L.</p> <p>1980'</p> <p>N: 607557.9 E: 790886.6 (NAD83)</p>	<p>PROPOSED BOTTOM HOLE LOCATION Lat - N 32°40'52.38" Long - W 103°30'57.49" NMSPCE- N 612526.6 E 792822.8 (NAD-83)</p>	<p>OPERATOR CERTIFICATION I hereby certify that the information contained herein is true and complete to the best of my knowledge and belief, and that this organization either owns a working interest or unleased mineral interest in the land including the proposed bottom hole location or has a right to drill this well at this location pursuant to a contract with an owner of such a mineral or working interest, or to a voluntary pooling agreement or a compulsory pooling order heretofore entered by the division.</p> <p><i>Aricka Easterling</i> 5/22/14 Signature Date</p> <p>Aricka Easterling Printed Name aeasterling@cimarex.com Email Address</p>
<p>SURVEYOR CERTIFICATION I hereby certify that the well location shown on this plat was plotted from field notes of actual surveys made by me or under my supervision, and that the same is true and correct to the best of my belief.</p> <p>001288-2803-13</p> <p>Date Surveyed Signature of Professional Surveyor</p> <p>Certification Copy 7977 Drawn 5/22/14</p> <p>0' 500' 1000' 1500' 2000' SCALE: 1" = 1000' WO Num.: 29846</p>		

MAY 29 2014

Drilling 12-1/4" hole
below 13 3/8" Casing



SRR & A

Exhibit E-1 – 2000# BOP
Teal 12 State 2H
Cimarex Energy Co.
12-19S-34
SHL 330 FSL & 1980 FWL
BHL 330 FNL & 1980 FWL
Lea County, NM

Drilling 8-3/4" hole
below 9 5/8" Casing

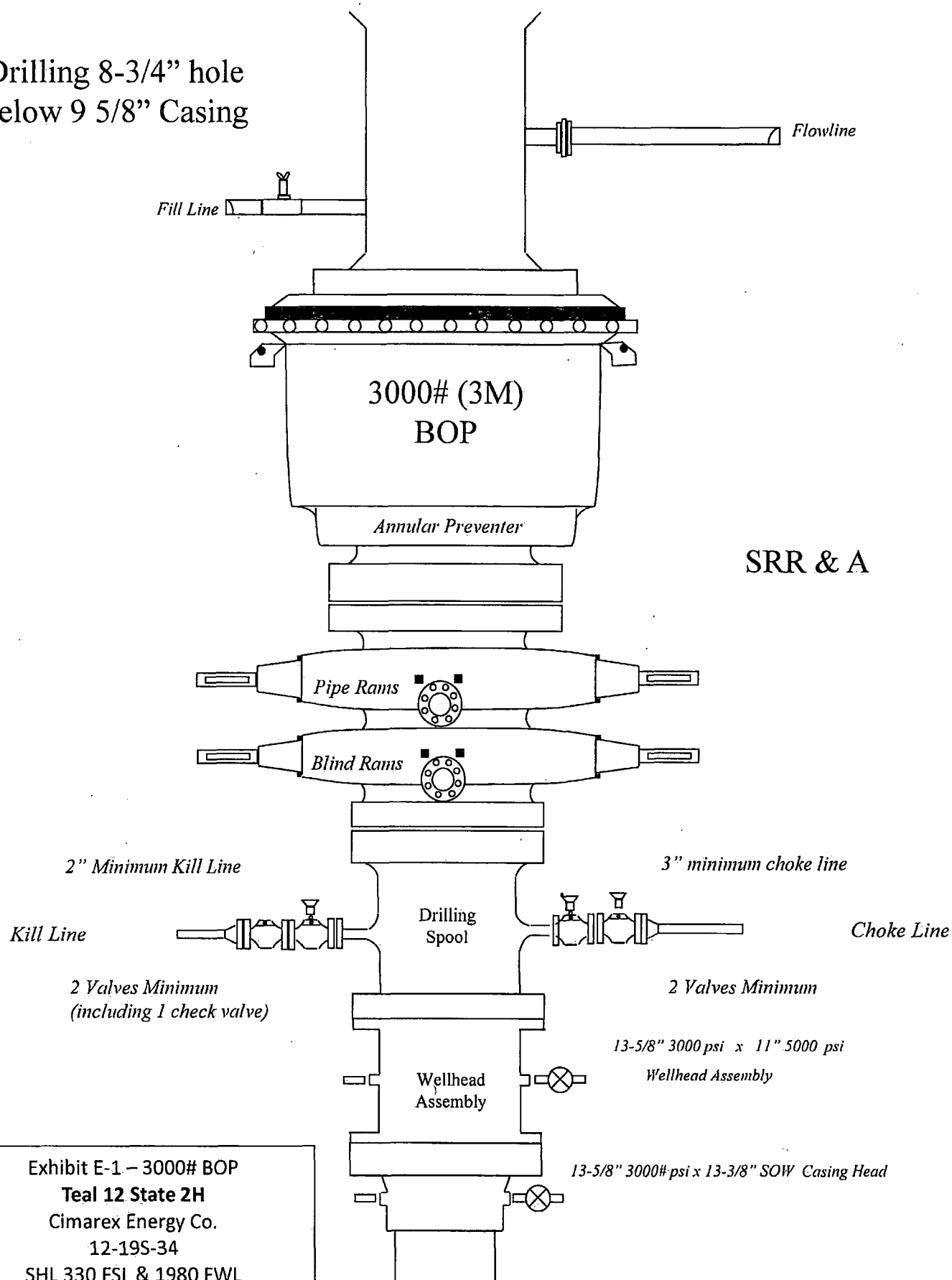
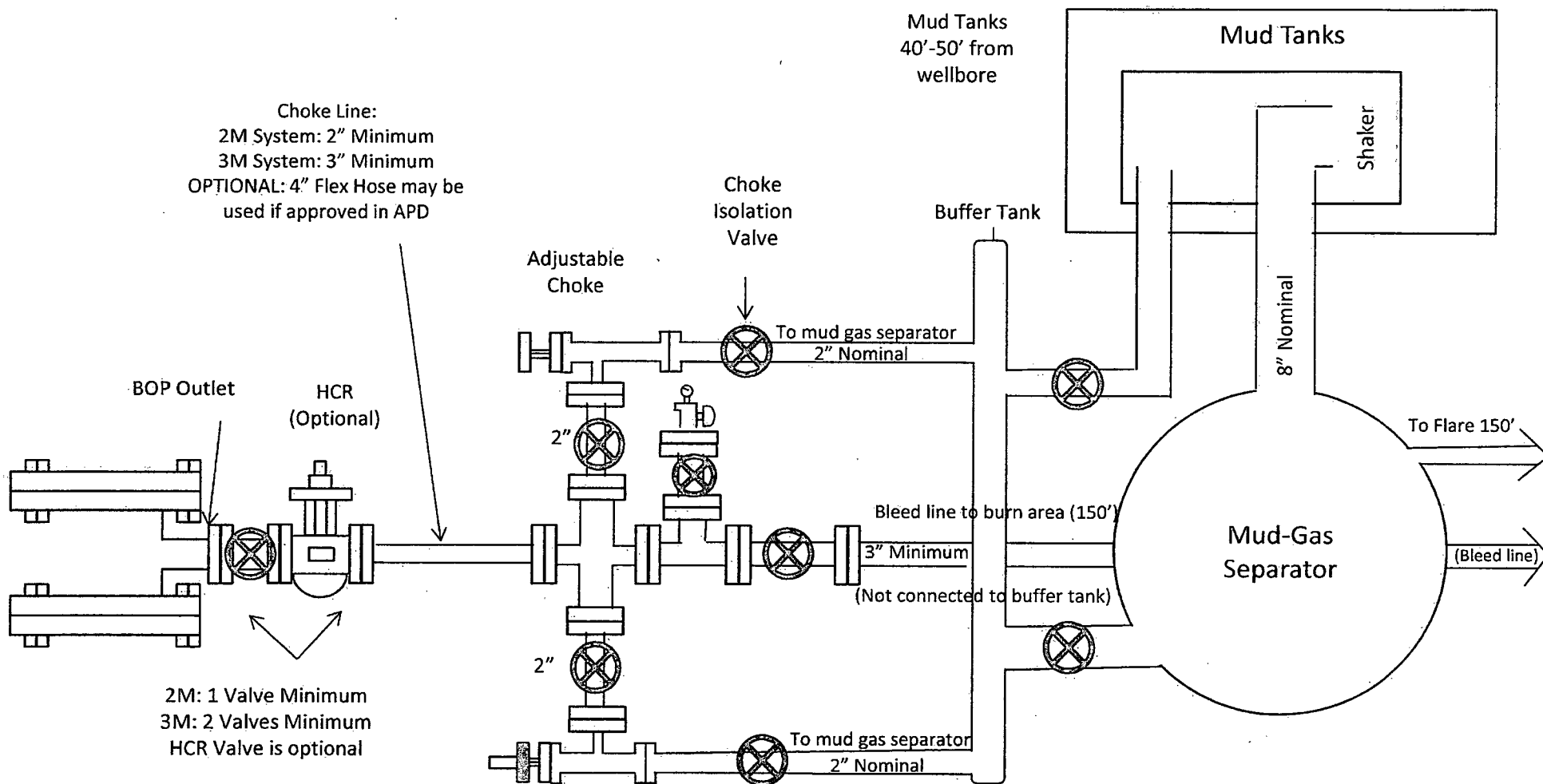


Exhibit E-1 – 3000# BOP
Teal 12 State 2H
Cimarex Energy Co.
12-19S-34
SHL 330 FSL & 1980 FWL
BHL 330 FNL & 1980 FWL
Lea County, NM



2M: 1 Valve Minimum
 3M: 2 Valves Minimum
 HCR Valve is optional

Drilling Operations Choke Manifold 2M/3M Service

Exhibit E-1 – Choke Manifold Diagram
Teal 12 State 2H
 Cimarex Energy Co.
 12-19S-34
 SHL 330 FSL & 1980 FWL
 BHL 330 FNL & 1980 FWL
 Lea County, NM