

District I
1625 N. French Dr., Hobbs, NM 88240
Phone: (575) 393-6161 Fax: (575) 393-0720
District II
811 S. First St., Artesia, NM 88210
Phone: (575) 748-1283 Fax: (575) 748-9720
District III
1000 Rio Brazos Road, Aztec, NM 87412
Phone: (505) 334-6178 Fax: (505) 334-6170
District IV
1220 S. St. Francis Dr., Santa Fe, NM 87505
Phone: (505) 476-3460 Fax: (505) 476-3461

State of New Mexico

Form C-102

Revised August 1, 2011

Submit one copy to appropriate

District Office

Energy, Minerals & Natural Resources Department
OIL CONSERVATION DIVISION

1220 South St. Francis Dr.

Santa Fe, NM 87505

☐ AMENDED REPORT

JUN 02 2014

RECEIVED

WELL LOCATION AND ACREAGE DEDICATION PLAT

¹ API Number 30-025-41884	² Pool Code 30250 53800	³ Pool Name SAND DUNES;
⁴ Property Code 313306	⁵ Property Name BOUNDARY RAIDER 6 FED	⁶ Well Number 2H
⁷ OGRID No. 6137	⁸ Operator Name DEVON ENERGY PRODUCTION COMPANY, L.P.	⁹ Elevation 3550.4

¹⁰ Surface Location

UL or lot no.	Section	Township	Range	Lot Idn	Feet from the	North/South line	Feet from the	East/West line	County
A	7	23 S	32 E		200	NORTH	200	EAST	LEA

¹¹ Bottom Hole Location If Different From Surface

UL or lot no.	Section	Township	Range	Lot Idn	Feet from the	North/South line	Feet from the	East/West line	County
1	6	23 S	32 E		330	NORTH	660	EAST	LEA

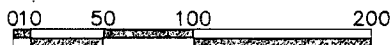
¹² Dedicated Acres 159.59	¹³ Joint or Infill	¹⁴ Consolidation Code	¹⁵ Order No.
--	-------------------------------	----------------------------------	-------------------------

No allowable will be assigned to this completion until all interests have been consolidated or a non-standard unit has been approved by the division.

<p>¹⁷ OPERATOR CERTIFICATION</p> <p>I hereby certify that the information contained herein is true and complete to the best of my knowledge and belief, and that this organization either owns a working interest or unleased mineral interest in the land including the proposed bottom hole location or has a right to drill this well at this location pursuant to a contract with an owner of such a mineral or working interest, or to a voluntary pooling agreement or a compulsory pooling order heretofore entered by the division.</p> <p><i>Trina C. Couch</i> 1/30/14 Signature Date</p> <p>Trina C. Couch, Regulatory Associate Printed Name</p> <p>trina.couch@dmv.com E-mail Address</p>		<p>¹⁸ SURVEYOR CERTIFICATION</p> <p>I hereby certify that the well location shown on this plat was plotted from field notes of actual surveys made by me or under my supervision, and that the same is true and correct to the best of my belief.</p> <p>JANUARY 27, 2014 Date of Survey</p> <p><i>[Signature]</i> Signature and Seal of Professional Surveyor</p> <p>Certificate Number: 12797 SURVEY NO. 1717B</p>
<p>12797</p>		

JUN 02 2014

NOTE: LATITUDE AND LONGITUDE COORDINATES ARE SHOWN USING THE NORTH AMERICAN DATUM OF 1983 (NAD83). LISTED NEW MEXICO STATE PLANE EAST COORDINATES ARE GRID (NAD83). BASIS OF BEARING AND DISTANCES USED ARE NEW MEXICO STATE PLANE EAST COORDINATES MODIFIED TO THE SURFACE



FROM THE INTERSECTION OF SR 128 (JAL HIGHWAY) AND CR 798 (RED ROAD) GO NORTH ON CR 798 5.0 MILES JUST PAST A CATTLE GUARD, TURN RIGHT (EAST) ON A CALICHE LEASE ROAD GO 1.9 MILES, FOLLOW LATH ABOUT 200 FT. ON LEFT (NORTH) SIDE TO SITE.

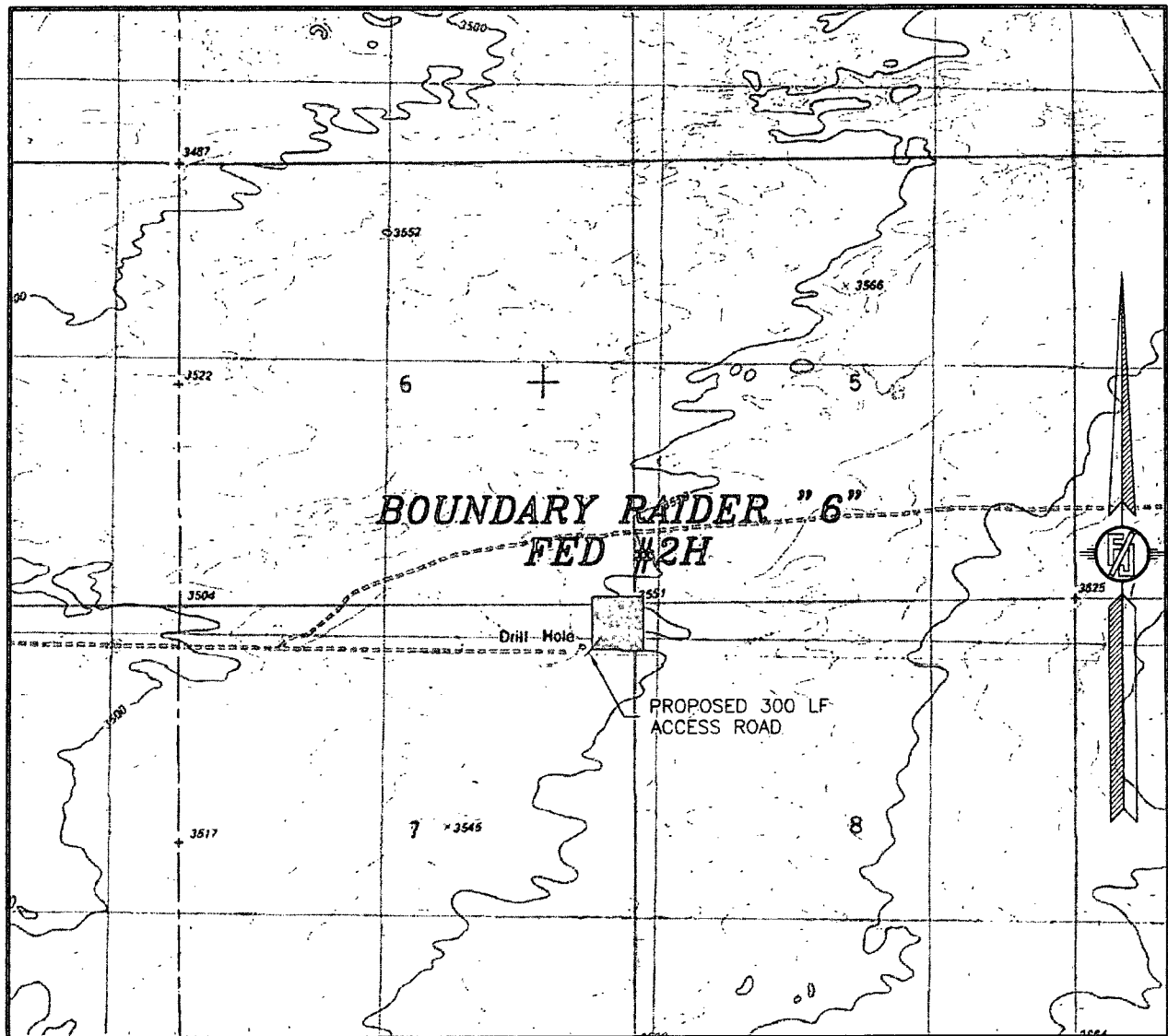
BOUNDARY RAIDER "6" FED #2H
LOCATED 200 FT. FROM THE NORTH LINE
AND 200 FT. FROM THE EAST LINE OF
SECTION 7, TOWNSHIP 23 SOUTH,
RANGE 32 EAST, N.M.P.M.
LEA COUNTY, STATE OF NEW MEXICO

SURVEY NO. 1717B.

MADRON SURVEYING, INC. 301 SOUTH CANAL
(575) 234-3341

CARLSBAD, NEW MEXICO

SECTION 7, TOWNSHIP 23 SOUTH, RANGE 32 EAST, N.M.P.M.
LEA COUNTY, STATE OF NEW MEXICO
LOCATION VERIFICATION MAP



USGS QUAD MAP:
BOOTLEG RIDGE

NOT TO SCALE

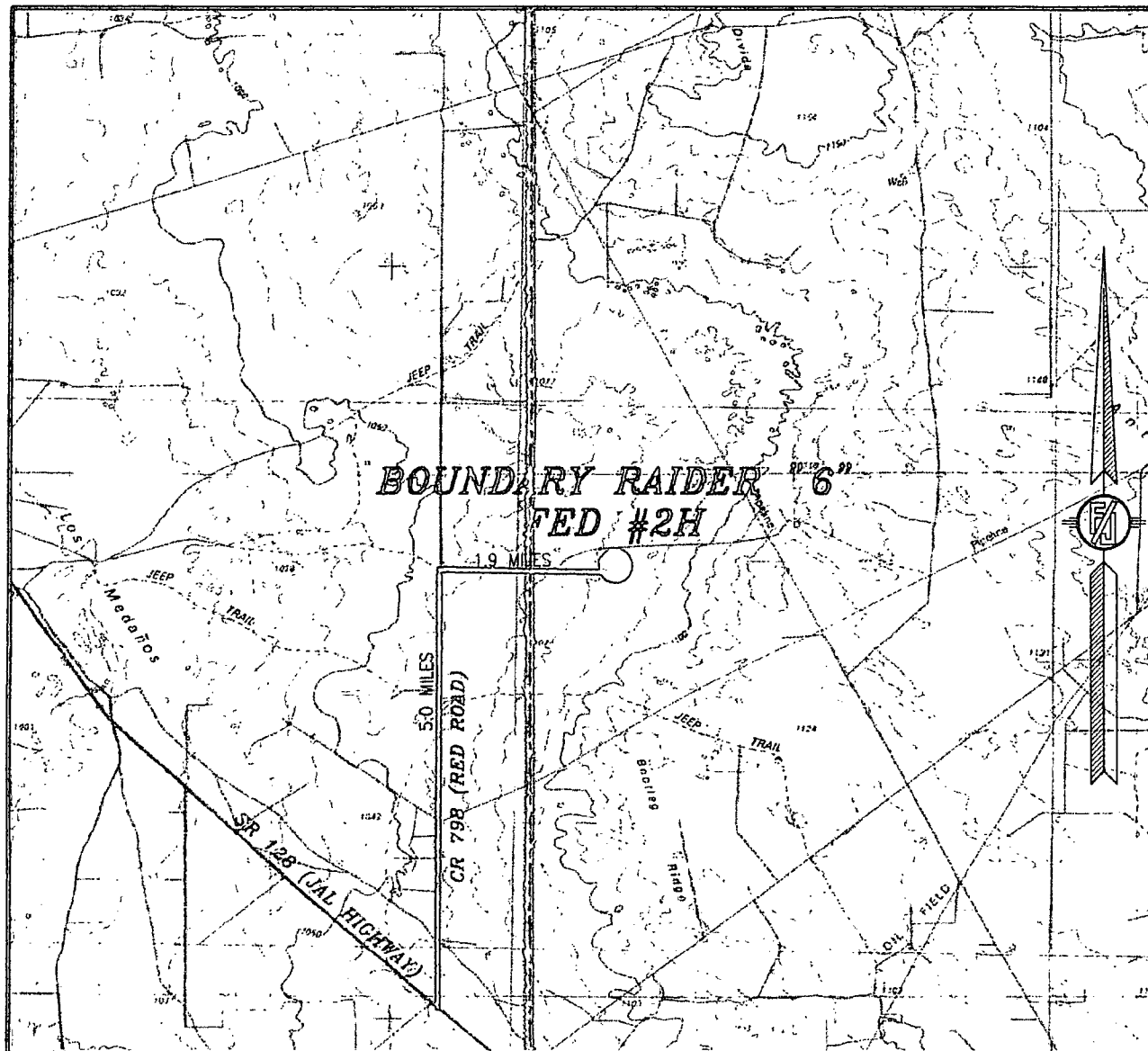
DEVON ENERGY PRODUCTION COMPANY, L.P.
BOUNDARY RAIDER "6" FED #2H
LOCATED 200 FT. FROM THE NORTH LINE
AND 200 FT. FROM THE EAST LINE OF
SECTION 7, TOWNSHIP 23 SOUTH,
RANGE 32 EAST, N.M.P.M.
LEA COUNTY, STATE OF NEW MEXICO

JANUARY 27, 2014

SURVEY NO. 1717B

MADRON SURVEYING, INC. 301 SOUTH CANAL (575) 234-3341 CARLSBAD, NEW MEXICO

SECTION 7, TOWNSHIP 23 SOUTH, RANGE 32 EAST, N.M.P.M.
LEA COUNTY, STATE OF NEW MEXICO
VICINITY MAP



NOT TO SCALE

DEVON ENERGY PRODUCTION COMPANY, L.P.

BOUNDARY RAIDER "6" FED #2H

LOCATED 200 FT. FROM THE NORTH LINE
AND 200 FT. FROM THE EAST LINE OF
SECTION 7, TOWNSHIP 23 SOUTH,
RANGE 32 EAST, N.M.P.M.
LEA COUNTY, STATE OF NEW MEXICO

DIRECTIONS TO LOCATION

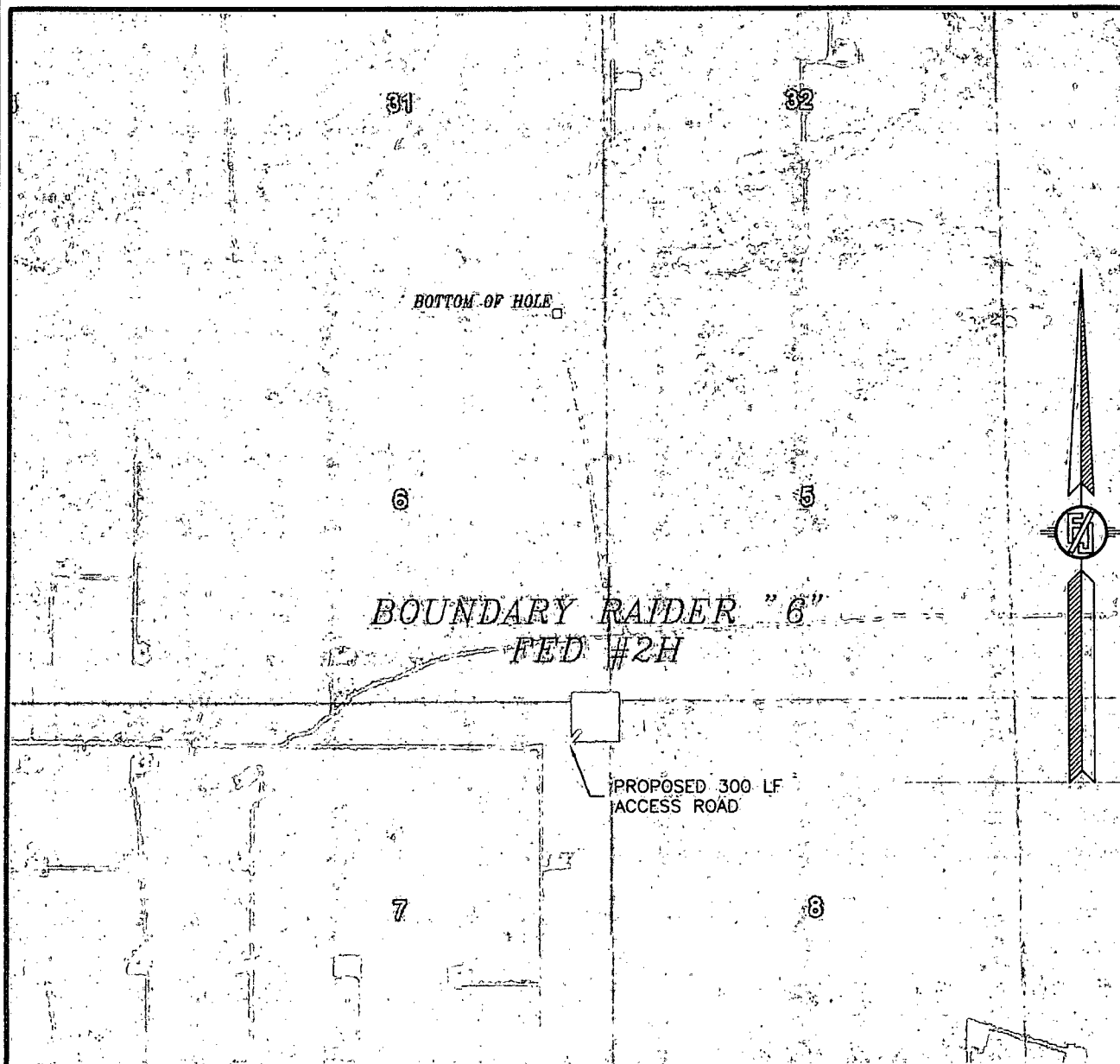
FROM THE INTERSECTION OF SR 128 (JAL HIGHWAY) AND CR 798
(RED ROAD) GO NORTH ON CR 798 5.0 MILES JUST PAST A CATTLE
GUARD, TURN RIGHT (EAST) ON A CALICHE LEASE ROAD GO 1.9
MILES, FOLLOW LATH ABOUT 200 FT. ON LEFT (NORTH) SIDE TO SITE.

JANUARY 27, 2014

MADRON SURVEYING, INC. 301 SOUTH CANAL
(575) 234-3341

SURVEY NO. 1717B
CARLSBAD, NEW MEXICO

SECTION 7, TOWNSHIP 23 SOUTH, RANGE 32 EAST, N.M.P.M.
LEA COUNTY, STATE OF NEW MEXICO
AERIAL PHOTO



NOT TO SCALE
AERIAL PHOTO:
GOOGLE EARTH
MARCH 2012

DEVON ENERGY PRODUCTION COMPANY, L.P.

BOUNDARY RAIDER "6" FED #2H

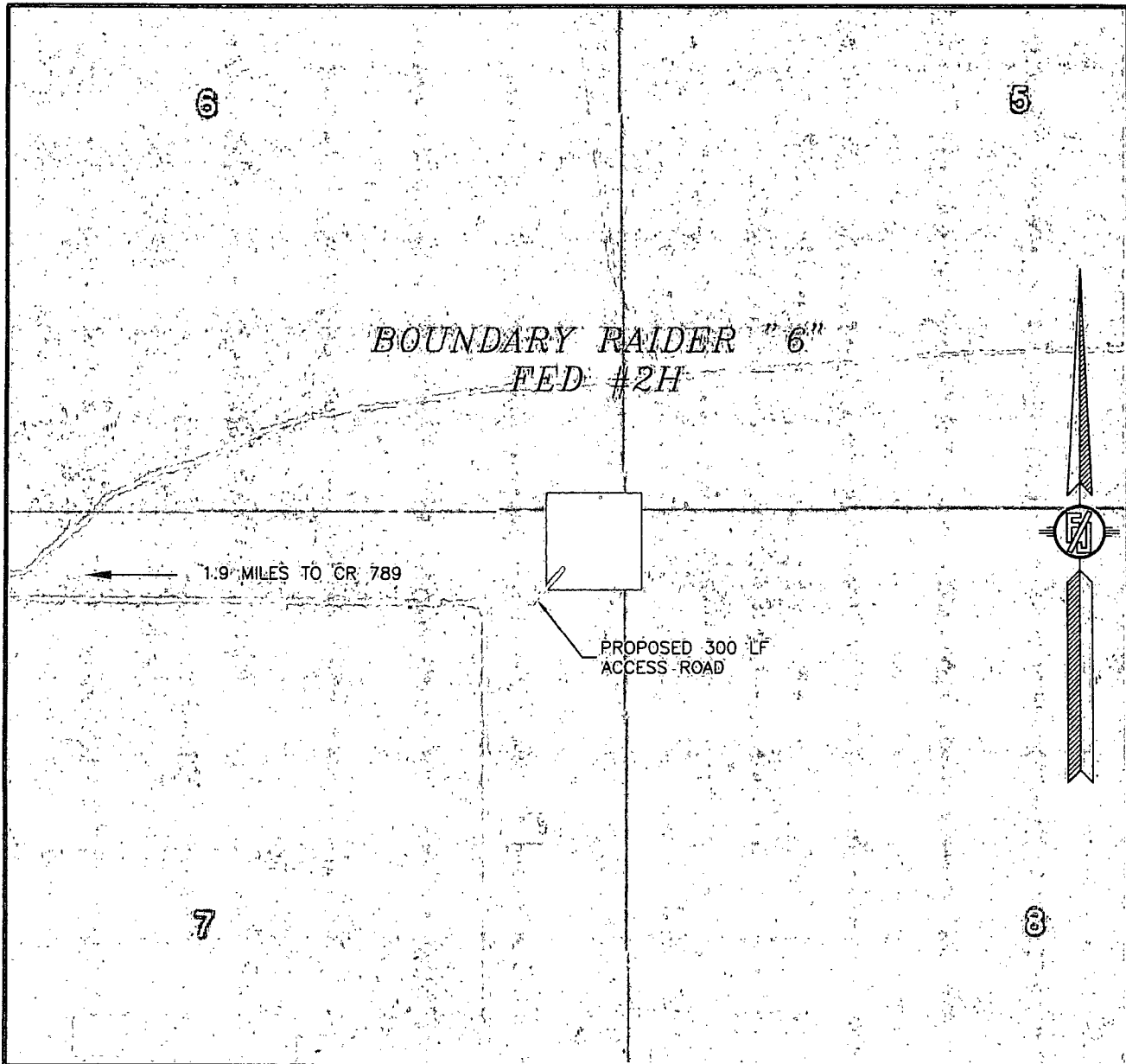
LOCATED 200 FT. FROM THE NORTH LINE
AND 200 FT. FROM THE EAST LINE OF
SECTION 7, TOWNSHIP 23 SOUTH,
RANGE 32 EAST, N.M.P.M.
LEA COUNTY, STATE OF NEW MEXICO

JANUARY 27, 2014

SURVEY NO. 1717B

MADRON SURVEYING, INC. 301 SOUTH CANAL (575) 234-3341 CARLSBAD, NEW MEXICO

SECTION 7, TOWNSHIP 23 SOUTH, RANGE 32 EAST, N.M.P.M.
LEA COUNTY, STATE OF NEW MEXICO
ACCESS AERIAL ROUTE MAP



NOT TO SCALE
AERIAL PHOTO:
GOOGLE EARTH
MARCH 2012

DEVON ENERGY PRODUCTION COMPANY, L.P.
BOUNDARY RAIDER "6" FED #2H
LOCATED 200 FT. FROM THE NORTH LINE
AND 200 FT. FROM THE EAST LINE OF
SECTION 7, TOWNSHIP 23 SOUTH,
RANGE 32 EAST, N.M.P.M.
LEA COUNTY, STATE OF NEW MEXICO

JANUARY 27, 2014.

SURVEY NO. 1717B

MADRON SURVEYING, INC. 301 SOUTH CANAL CARLSBAD, NEW MEXICO
(575) 234-3341

LIVINGSTON EAST 31 F #5 LOTUS ALT STATE #4

**BOUNDARY RAIDER 6 FEDERAL 2H
T23S - R32E**

SHL to nearest lease line: 200 ft.
SHL to nearest wellbore: 514 ft. SW.
SHL to BHL 5165 ft.
BHL to nearest wellbore: 407 ft. SSW.

PLATINUM 6 FEDERAL 1 3186 ft. W.
HORNET 6 FEDERAL 1 18 ft. W.*

*All distances are estimated.

LOTUS 'ALT' STATE 2

LIVINGSTON EAST 31 F #2

LOTUS ALT STATE #5

LOTUS ALT STATE #8

LIVINGSTON EAST 31 F #3

LOTUS ALT STATE #9

SILVERTON '31' FEDER 1

1 MILE

BHL

HORNET 6 FEDERAL 1

FEDERAL #27

FEDERAL #20

PLATINUM '6' FEDERAL 1

BOUNDARY RAIDER 6 FEDERAL 2H

1 MILE

SHL

FEDERAL WL 5-7

FEDERAL #11

SHARBRO FED 8

FEDERAL #13

SHARBRO FED 6

BITSY FEDERAL 1

FEDERAL #4

SHARBRO FED 7

SHARBRO FED 10

FEDERAL #3

BLUE QUAIL FEDERAL #3

BLUE QUAIL FEDERAL 1

BLUE QUAIL FEDERAL #2

SHARBRO FED 1

TOMCAT 8 FEDER

ONE MILE RADIUS MAP

DEVON

BOUNDARY RAIDER 6 FEDERAL 2H