

District I
1625 N. French Dr., Hobbs, NM 88240
Phone: (575) 393-6161 Fax: (575) 393-0720
District II
311 S. First St., Artesia, NM 88210
Phone: (575) 748-1283 Fax: (575) 748-9720
District III
1000 Rio Brazos Road, Aztec, NM 87410
Phone: (505) 334-6178 Fax: (505) 334-6170
District IV
1220 S. St. Francis Dr., Santa Fe, NM 87505
Phone: (505) 476-3460 Fax: (505) 476-3462

HOBBS OCD State of New Mexico
Energy, Minerals & Natural Resources Department
JUN 09 2014 OIL CONSERVATION DIVISION
RECEIVED 1220 South St. Francis Dr.
Santa Fe, NM 87505

Form C-102
Revised August 1, 2011
Submit one copy to appropriate
District Office
 AMENDED REPORT

WELL LOCATION AND ACREAGE DEDICATION PLAT

¹ API Number 30-025-41900	² Pool Code 77926	³ Pool Name WC-025 6-07 5193513B; BS
⁴ Property Code 313335	⁵ Property Name AMMONITE 7 FED COM	
⁷ OGRID No. 22044	⁸ Operator Name MCELVAIN ENERGY, INC.	⁶ Well Number 3H
		⁹ Elevation 3759.5

¹⁰ Surface Location

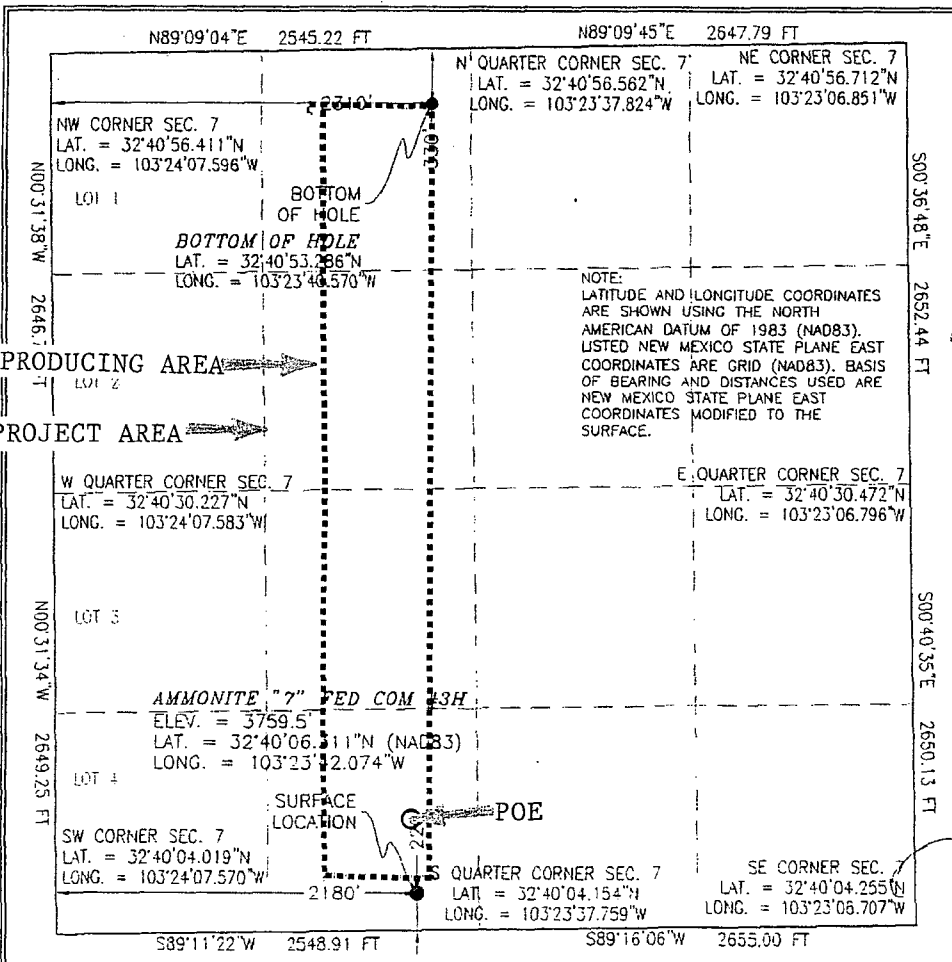
UL or lot no.	Section	Township	Range	Lot Idn	Feet from the	North/South line	Feet from the	East/West line	County
N	7	19 S	36 E		220	SOUTH	2180	WEST	LEA

¹¹ Bottom Hole Location If Different From Surface

UL or lot no.	Section	Township	Range	Lot Idn	Feet from the	North/South line	Feet from the	East/West line	County
C	7	19 S	36 E		330	NORTH	2310	WEST	LEA

¹² Dedicated Acres 160	¹³ Joint or Infill	¹⁴ Consolidation Code	¹⁵ Order No.
---	-------------------------------	----------------------------------	-------------------------

No allowable will be assigned to this completion until all interests have been consolidated or a non-standard unit has been approved by the division.



¹⁷ OPERATOR CERTIFICATION
I hereby certify that the information contained herein is true and complete to the best of my knowledge and belief, and that this organization either owns a working interest or unleased mineral interest in the land including the proposed bottom hole location or has a right to drill this well at this location pursuant to a contract with an owner of such a mineral or working interest, or to a voluntary pooling agreement or a compulsory pooling order heretofore entered by the division.

Joe T. Janica 02/19/14
Signature Date
Joe T. Janica
Printed Name
joejanica@valornet.com
E-mail Address

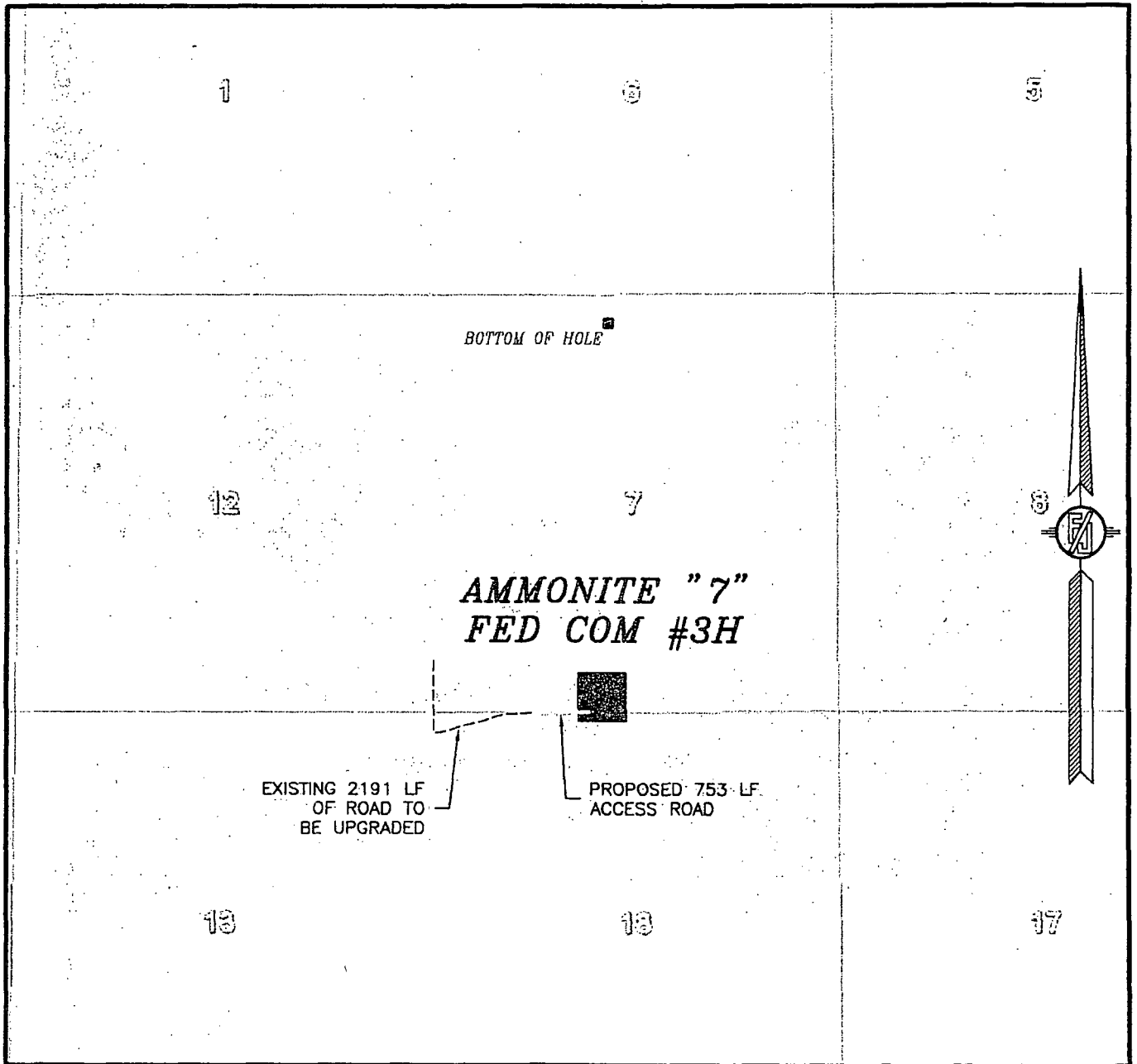
¹⁸ SURVEYOR CERTIFICATION
I hereby certify that the well location shown on this plat was plotted from field notes of actual surveys made by me or under my supervision, and that the same is true and correct to the best of my belief.

JANUARY 31, 2014
Date of Survey
Armando F. Jaramillo
Signature and Seal of Professional Surveyor
Certificate Number: ARMONIO F. JARAMILLO, PLS 12797
SURVEY NO. 23198

JUN 09 2014

AW

SECTION 7, TOWNSHIP 19 SOUTH, RANGE 36 EAST, N.M.P.M.
LEA COUNTY, STATE OF NEW MEXICO
AERIAL PHOTO



NOT TO SCALE
AERIAL PHOTO:
GOOGLE EARTH
MARCH 2012

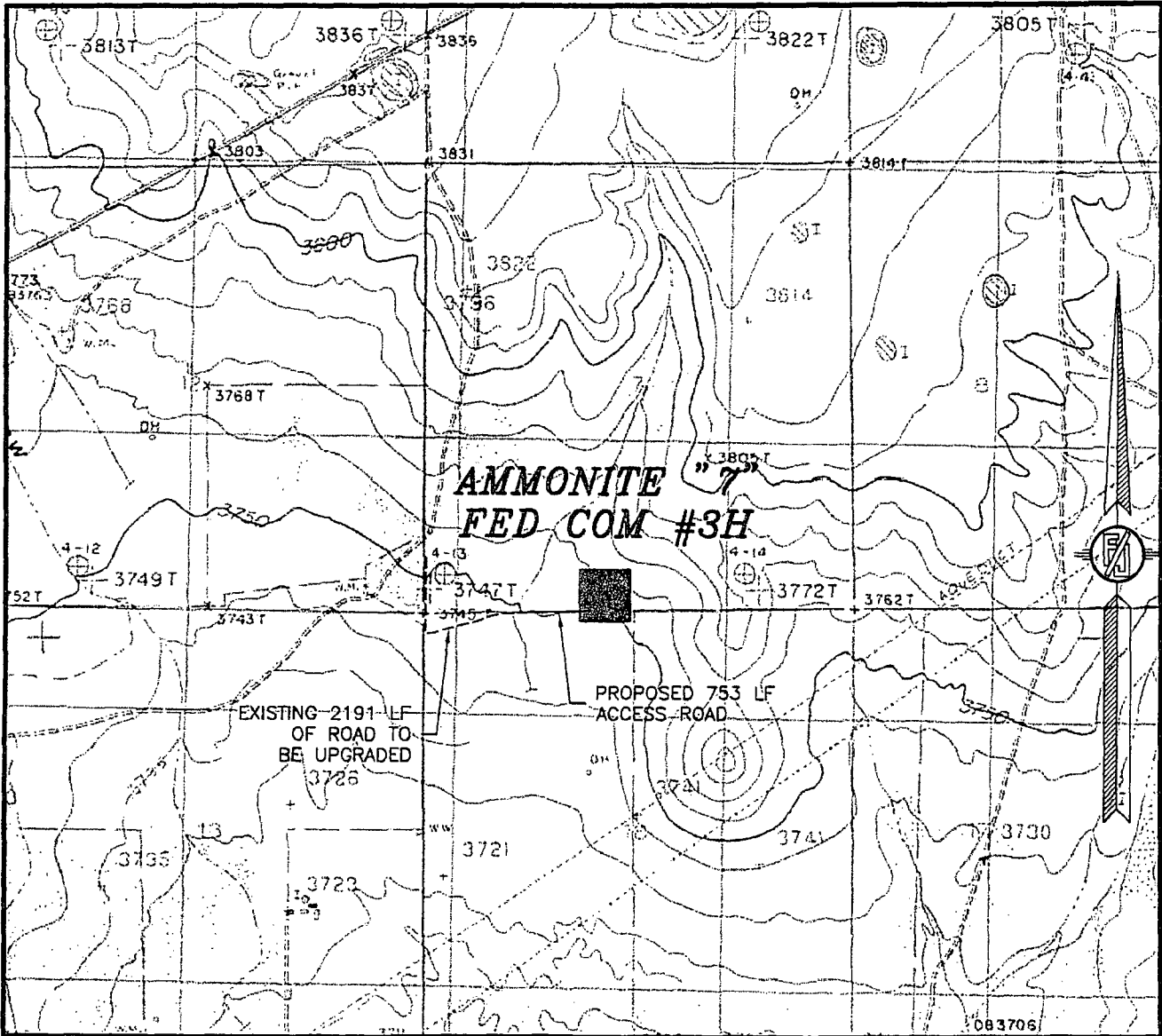
McELVAIN ENERGY, INC.
AMMONITE "7" FED COM #3H
LOCATED 220 FT. FROM THE SOUTH LINE
AND 2180 FT. FROM THE WEST LINE OF
SECTION 7, TOWNSHIP 19 SOUTH,
RANGE 36 EAST, N.M.P.M.
LEA COUNTY, STATE OF NEW MEXICO

JANUARY 31, 2014

SURVEY NO. 2319B

MADRON SURVEYING, INC. 301 SOUTH CANAL CARLSBAD, NEW MEXICO
(575) 234-3341

SECTION 7, TOWNSHIP 19 SOUTH, RANGE 36 EAST, N.M.P.M.
 LEA COUNTY, STATE OF NEW MEXICO
 LOCATION VERIFICATION MAP



USGS QUAD MAP:
 IRONHOUSE DRAW

NOT TO SCALE

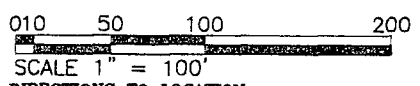
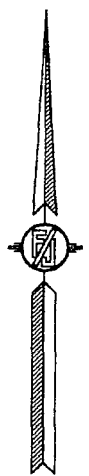
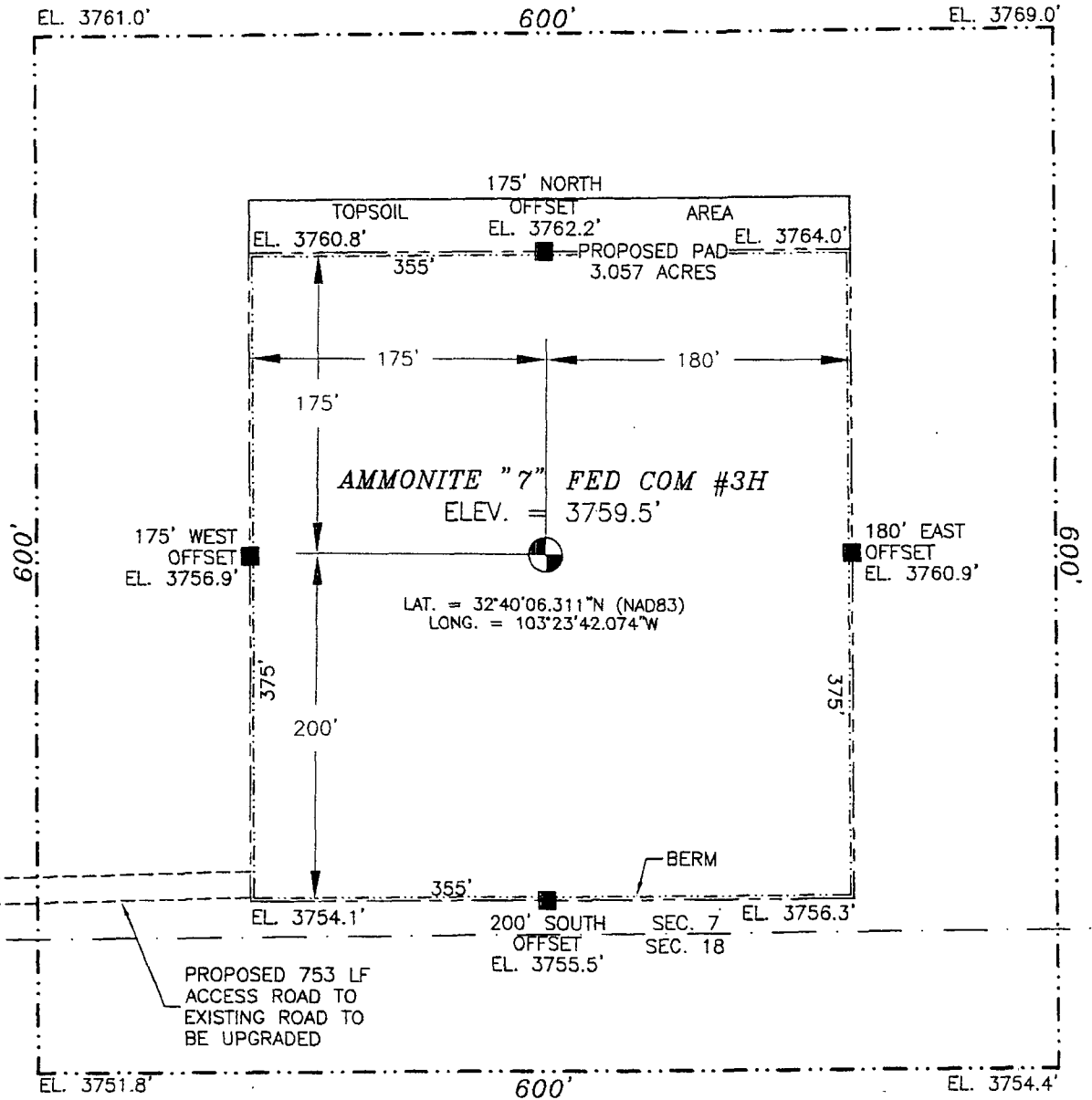
McELVAIN ENERGY, INC.
AMMONITE "7" FED COM #3H
 LOCATED 220 FT. FROM THE SOUTH LINE
 AND 2180 FT. FROM THE WEST LINE OF
 SECTION 7, TOWNSHIP 19 SOUTH,
 RANGE 36 EAST, N.M.P.M.
 LEA COUNTY, STATE OF NEW MEXICO

JANUARY 31, 2014

MADRON SURVEYING, INC. 301 SOUTH CANAL (575) 234-3341 CARLSBAD, NEW MEXICO SURVEY NO. 2319B

SECTION 7, TOWNSHIP 19 SOUTH, RANGE 36 EAST, N.M.P.M.
LEA COUNTY, STATE OF NEW MEXICO
SITE MAP

NOTE: LATITUDE AND LONGITUDE COORDINATES ARE SHOWN USING THE NORTH AMERICAN DATUM OF 1983 (NAD83). LISTED NEW MEXICO STATE PLANE EAST COORDINATES ARE GRID (NAD83). BASIS OF BEARING AND DISTANCES USED ARE NEW MEXICO STATE PLANE EAST COORDINATES MODIFIED TO THE SURFACE



DIRECTIONS TO LOCATION
200' WEST OF MILE MARKER 89 ON HIGHWAY 62-180 GO SOUTH ON CALICHE LEASE ROAD 0.65 MILES TO STATE NO. 1 DISPOSAL FOR BASIC ENERGY. ON THE SOUTH SIDE OF THIS PAD THERE IS A CALICHE LEASE ROAD. GO 0.55 MILES WHERE ROAD BEND WEST. JUST BEFORE FENCE GO SOUTH ON 2-TRACK 0.17 MILES. 2-TRACK INTERSECTION GO EAST 0.24 MILES TO WHERE 2-TRACK BEND NORTH AT BEND STARTS PROPOSED ROAD, GO EAST 753' TO SOUTHEAST CORNER OF PAD.

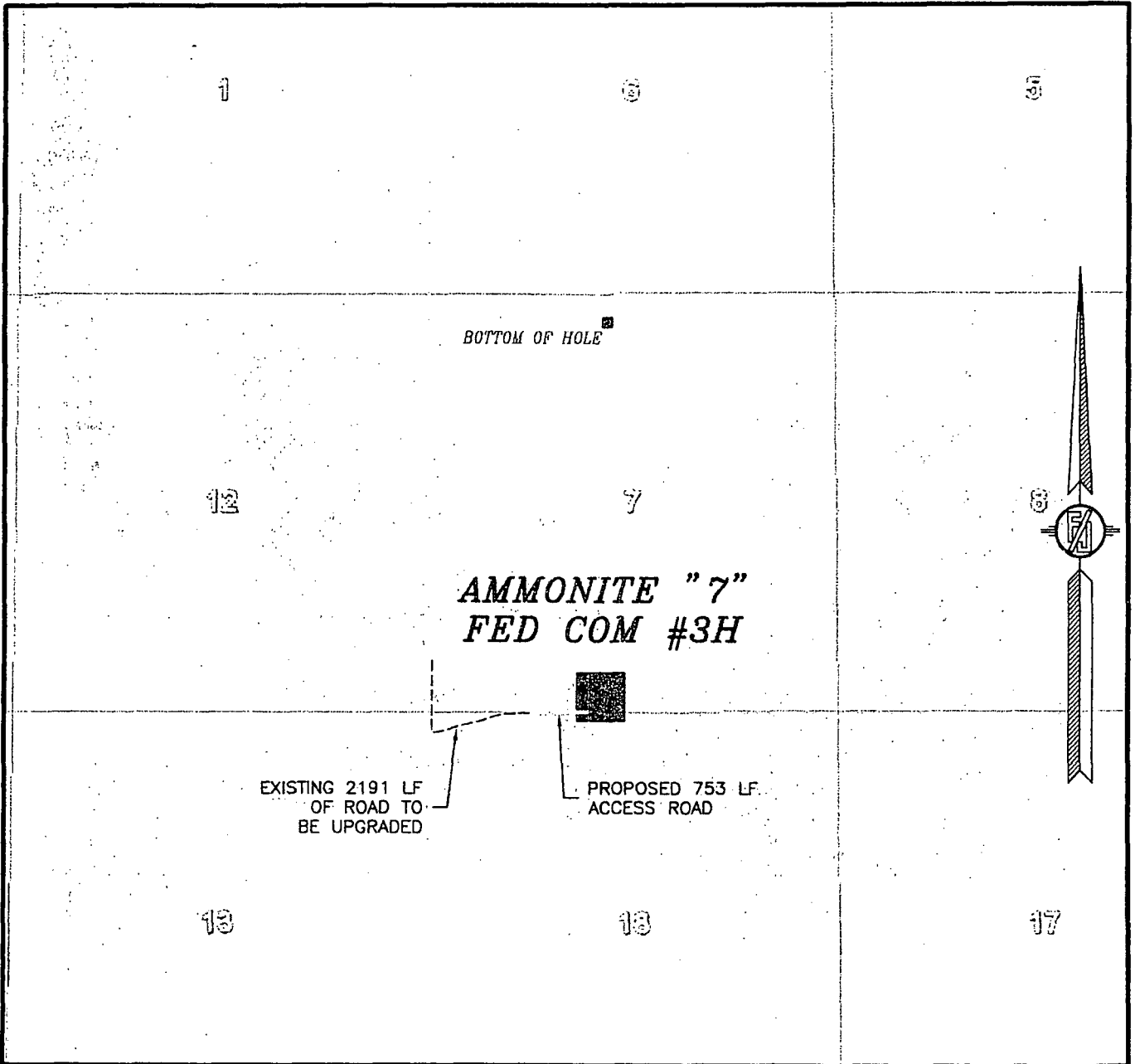
McELVAIN ENERGY, INC.
AMMONITE "7" FED COM #3H
LOCATED 220 FT. FROM THE SOUTH LINE
AND 2180 FT. FROM THE WEST LINE OF
SECTION 7, TOWNSHIP 19 SOUTH,
RANGE 36 EAST, N.M.P.M.
LEA COUNTY, STATE OF NEW MEXICO

JANUARY 31, 2014

SURVEY NO. 2319B

MADRON SURVEYING, INC. 301 SOUTH CANAL (575) 234-3341 CARLSBAD, NEW MEXICO

SECTION 7, TOWNSHIP 19 SOUTH, RANGE 36 EAST, N.M.P.M.
LEA COUNTY, STATE OF NEW MEXICO
AERIAL PHOTO



NOT TO SCALE
AERIAL PHOTO:
GOOGLE EARTH
MARCH 2012

McELVAIN ENERGY, INC.
AMMONITE "7" FED COM #3H
LOCATED 220 FT. FROM THE SOUTH LINE
AND 2180 FT. FROM THE WEST LINE OF
SECTION 7, TOWNSHIP 19 SOUTH,
RANGE 36 EAST, N.M.P.M.
LEA COUNTY, STATE OF NEW MEXICO

JANUARY 31, 2014

SURVEY NO. 2319B

MADRON SURVEYING, INC. 301 SOUTH CANAL (575) 234-3341 CARLSBAD, NEW MEXICO

36
Maynard Oil
H B P
E-1533

Maynard
Oil
H.B.P.
B-1482
State
Ralph Jones
3/10-51
TD 12020
DA 11-29-58

31
Chevron
H.B.P.
B-243
State
Shell
State
TD 12410
DA 11-29-58

32
Yates Pet. etal
11-1-96
Y-3878
18 35
Yates Pet. etal
3-1-2000
VA-1341
7793
State

(Patterson) Pet
(Dunham Oper 50%)
(Fogden) Ener. (25%)
(R. Lyman) (25%)
VA-1188
(TMBR/Sharp)
TMBR-51
Det. Disc.
P28
(P18)
Person Pet
SA/Sharp
Shall E.
Winston
Iron Horse St.
(TD 7157)
(DA 11-10-74)
Qn. Disc.

Ya
4-1-2006
V-6198
ST 20981
Pet. etal
4-1-2006
V-61
7827
State
775313
DA 7-25-98

Yates Pet. etal
11-1-2000
VA-1426
6289
Jeff
A.J.R
Brasi
W.M
Snyder
Jeff
A.J
Sny

SDX Res.
4-1-2015
V-8724
3307 14

3H
BHP
Westal
6-1-98
VA-928
25 36

Mitchell
8-1-96
V-3790
256 12
Yate
9-1-96
VA-12
187

S

Sunroy Mid-Cont
Snyder
TD: 4802
DA 11-23-58

Tierra
11-6-2012

C.S. Alves, et al
K Jones, et al
R. Bryan, et al
Clara Fowl

Amoco
NO
NO
NO
Cities Servis
H.B.P.
B-1481

C.W. Adams
10-1-93
56764
U.S.M.I.
Roy Westall
6-1-98
VA-928
25 36
Location as staked

Yates Pet etal
3-9-2009
R. Bryan, et al
Clara F.
H S
Yate
Pet. etal
9-1-96
VA-12
187
State

(A)
Tierra
11-6-2012

Yates Pet. etal
3-9-2009
10-12-2009
ates Pet. etal
8-1-97
VA-663
1169
Yates Pet etal
5-1-97
V-551
1173
Yate
eta
5-1-97
VA-13
107

Dark En(S/R)
R.H.
Forest, Jr. Oil

U.S.
Tierra
7-18-2014

T. Brown
Sunny-Bryan
TD 5070
DA 3 5 61
R. Bryan, et al
37-7-93
F.W. Darmsetter
11-17-93
50 00
EXHIBIT "A-1"
ONE MILE RADIUS MAP

Dark En(S/R)
R.H.
Forest, Jr. Oil
B. NASH

McELVAIN ENERGY, INC.
AMMONITE 7 FED/ COM. #3H
UNIT "N" SECTION 7
T19S-R36E LEA CO. NM

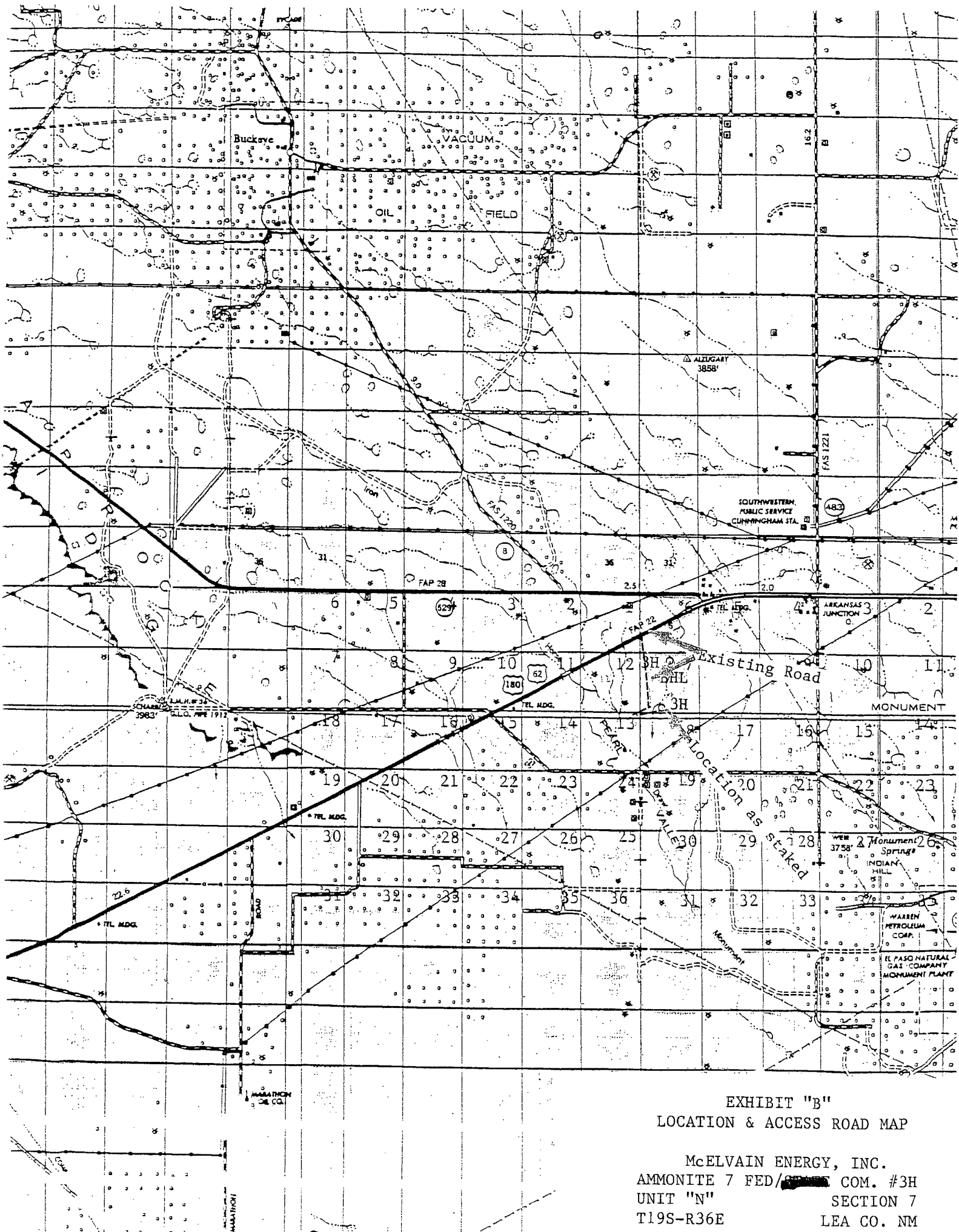


EXHIBIT "B"
LOCATION & ACCESS ROAD MAP

McELVAIN ENERGY, INC.
AMMONITE 7 FED/8 COM. #3H
UNIT "N" SECTION 7
T19S-R36E LEA CO. NM

