

District I
1625 N. French Dr., Hobbs, NM 88240
Phone: (575) 393-6161 Fax: (575) 393-0720
District II
811 S. First St., Artesia, NM 88210
Phone: (575) 748-1283 Fax: (575) 748-9720
District III
1000 Rio Brazos Road, Aztec, NM 87410
Phone: (505) 334-6178 Fax: (505) 334-6170
District IV
1220 S. St. Francis Dr., Santa Fe, NM 87505
Phone: (505) 476-3460 Fax: (505) 476-3462

State of New Mexico
Energy, Minerals & Natural Resources Department

OIL CONSERVATION DIVISION **HOBBS OCD**

1220 South St. Francis Dr.
Santa Fe, NM 87505

Form C-102

Revised August 1, 2011

Submit one copy to appropriate

District Office

JUN 20 2014

☐ AMENDED REPORT

WELL LOCATION AND ACREAGE DEDICATION **RECEIVED**

¹ API Number 30-025-41930	² Pool Code 65330	³ Pool Name Young Bone Spring
⁴ Property Code 313384	⁵ Property Name YOUNG 21 PM FEDERAL COM	
⁷ OGRID No. 14744	⁸ Operator Name MEWBOURNE OIL COMPANY	
		⁶ Well Number 1H
		⁹ Elevation 3750'

¹⁰ Surface Location

UL or lot no.	Section	Township	Range	Lot Idn	Feet from the	North/South line	Feet from the	East/West line	County
P	21	18-S	32-E		297	SOUTH	706	EAST	LEA

¹¹ Bottom Hole Location If Different From Surface

UL or lot no.	Section	Township	Range	Lot Idn	Feet from the	North/South line	Feet from the	East/West line	County
M	21	18-S	32-E		990	SOUTH	330	WEST	LEA

¹² Dedicated Acres 160	¹³ Joint or Infill	¹⁴ Consolidation Code	¹⁵ Order No.
---	-------------------------------	----------------------------------	-------------------------

No allowable will be assigned to this completion until all interests have been consolidated or a non-standard unit has been approved by the division.

<p>16</p> <p>N 89°52'20" E 5259.45'</p> <p>GEODETIC DATA NAD 27 GRID - NM EAST</p> <p>SURFACE LOCATION N 628454.4 E 674913.2</p> <p>LAT: 32.72642671° N LONG: 103.76456165° W</p> <p>CORNER DATA NAD 27 GRID - NM EAST</p> <p>A: FND BC 1913 N 628151.4 - E 670355.2</p> <p>B: FND BC 1913 N 630795.0 - E 670342.0</p> <p>C: FND BC 1913 N 633430.7 - E 670328.8</p> <p>D: FND BC 1913 N 633442.4 - E 675587.0</p> <p>E: FND BC 1913 N 630802.3 - E 675596.2</p> <p>F: FND BC 1913 N 628158.0 - E 675622.0</p> <p>G: FND BC 1913 N 628155.7 - E 672986.7</p> <p>Project Area</p> <p>Producing Area</p> <p>Well Path</p> <p>336' 706'</p> <p>297'</p> <p>S 89°54'28" W 2632.11'</p> <p>S 89°56'56" W 2635.93'</p>	<p>17 OPERATOR CERTIFICATION</p> <p>I hereby certify that the information contained herein is true and complete to the best of my knowledge and belief, and that this organization either owns a working interest or unleased mineral interest in the land including the proposed bottom hole location or has a right to drill this well at this location pursuant to a contract with an owner of such a mineral or working interest, or to a voluntary pooling agreement or a compulsory pooling order heretofore entered by the division.</p> <p><i>Bradley Bishop</i> 10-25-13 Signature Date</p> <p>BRADLEY BISHOP Printed Name</p> <p>E-mail Address</p>
	<p>18 SURVEYOR CERTIFICATION</p> <p>I hereby certify that the well location shown on this plat was plotted from field notes of actual surveys made by me or under my supervision, and that the same is true and correct to the best of my belief.</p> <p>9/9/13 Date of Survey</p> <p>Signature and Seal of Professional Surveyor</p> <p>19680 Certificate Number</p>
	<p>ROBERT M. HOWETT NEW MEXICO 19680 PROFESSIONAL SURVEYOR</p>

JUN 23 2014

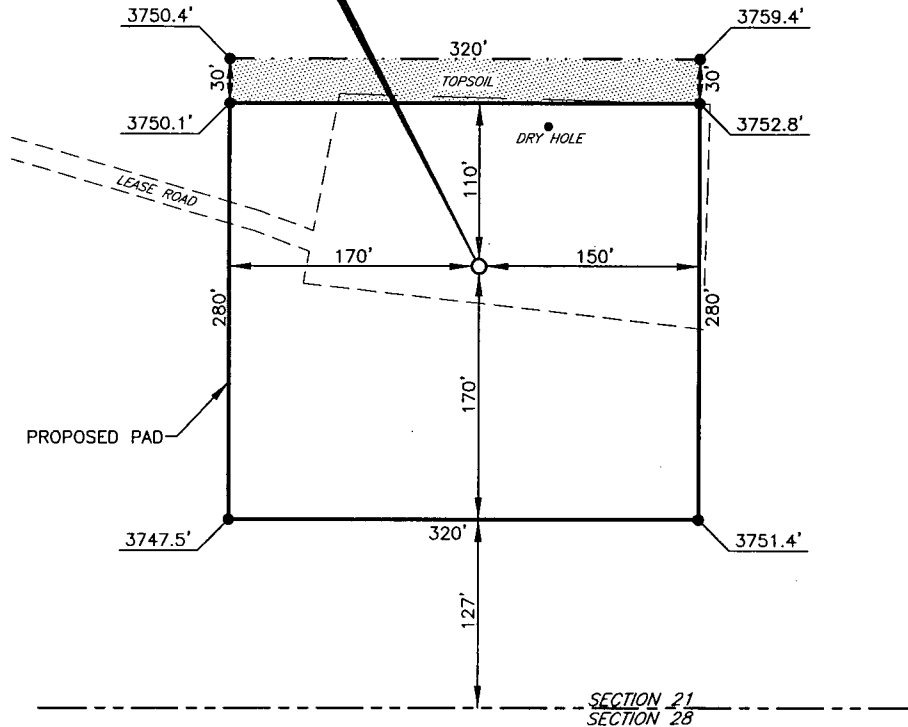
Am

Exhibit "3"

MEWBOURNE OIL COMPANY

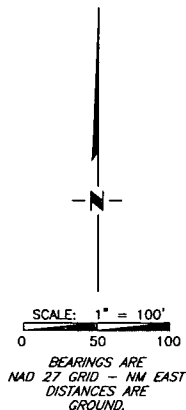
Young 21 PM Federal Com #1H
(297' FSL & 706' FEL)
Section 21, T-18-S, R-32-E,
N. M. P. M., Lea Co., New Mexico

YOUNG 21 PM FEDERAL COM #1H
ELEVATION: 3750'
LAT: 32.72642671° N
LONG: 103.76456165° W



DIRECTIONS TO LOCATION

From the intersection of St. Hwy. #529 and CR-126A (Maljamar):
Go South on CR-126A approx. 1.7 mile to lease road.
Turn left and go Southeast approx. 3.1 mile to a "Y".
Turn right and go Southwest approx. 0.8 mile to a "T".
Turn right and go West approx. 0.5 mile.
Then winding South approx. 0.3 mile to existing pad.
Go to South side of pad and go East following an old lease road
approx. 0.2 mile to this location.



Copyright 2012 - All Rights Reserved

NO.	REVISION	DATE
JOB NO.:	LS130360	
DWG. NO.:	130360PAD	

PROSPERITY CONSULTANTS, LLC



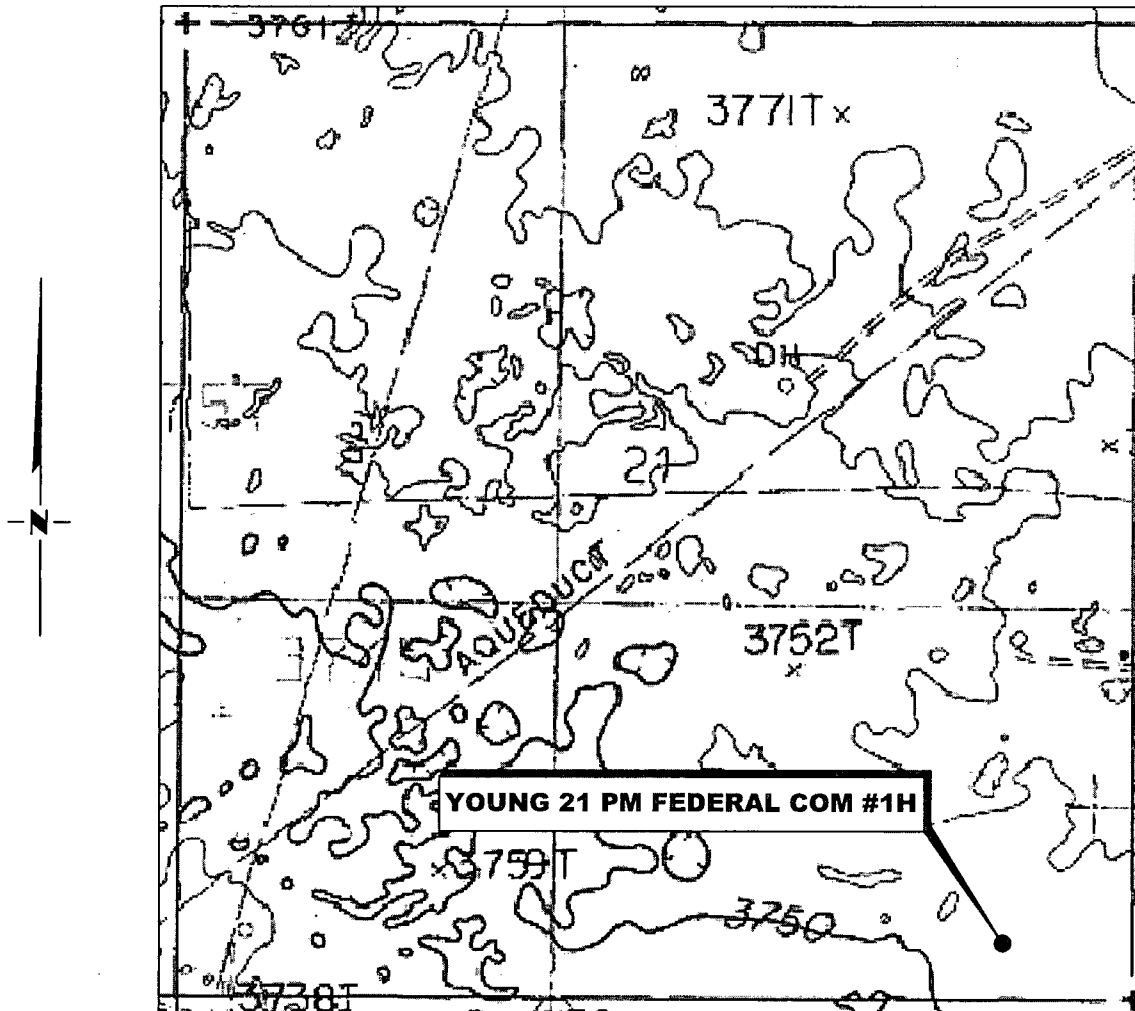
2251 Double Creek Drive, Suite 602, Round Rock, Texas 78664

o (512) 992-2087 f (512) 251-2518

SCALE: 1" = 100'
DATE: 9/9/13
SURVEYED BY: BK/IE
DRAWN BY: AF
APPROVED BY: LWB
SHEET : 1 OF 1

Exhibit "3A"

LOCATION VERIFICATION MAP



SECTION 21, TWP. 18 SOUTH, RGE. 32 EAST,
N. M. P. M., LEA COUNTY, NEW MEXICO

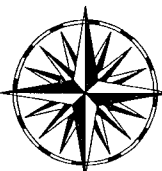
OPERATOR: Mewbourne Oil Company
LEASE: Young 21 PM Federal Com
WELL NO.: 1H
ELEVATION: 3750'

LOCATION: 297' FSL & 706' FEL
CONTOUR INTERVAL: 10'
USGS TOPO. SOURCE MAP:
Greenwood Lake, NM (Prov. Ed. 1985)

Copyright 2012 - All Rights Reserved

NO.	REVISION	DATE
JOB NO.: LS130360		
DWG. NO.: 130360LVM		

PROSPERITY CONSULTANTS, LLC



2251 Double Creek Drive, Suite 602, Round Rock, Texas 78664

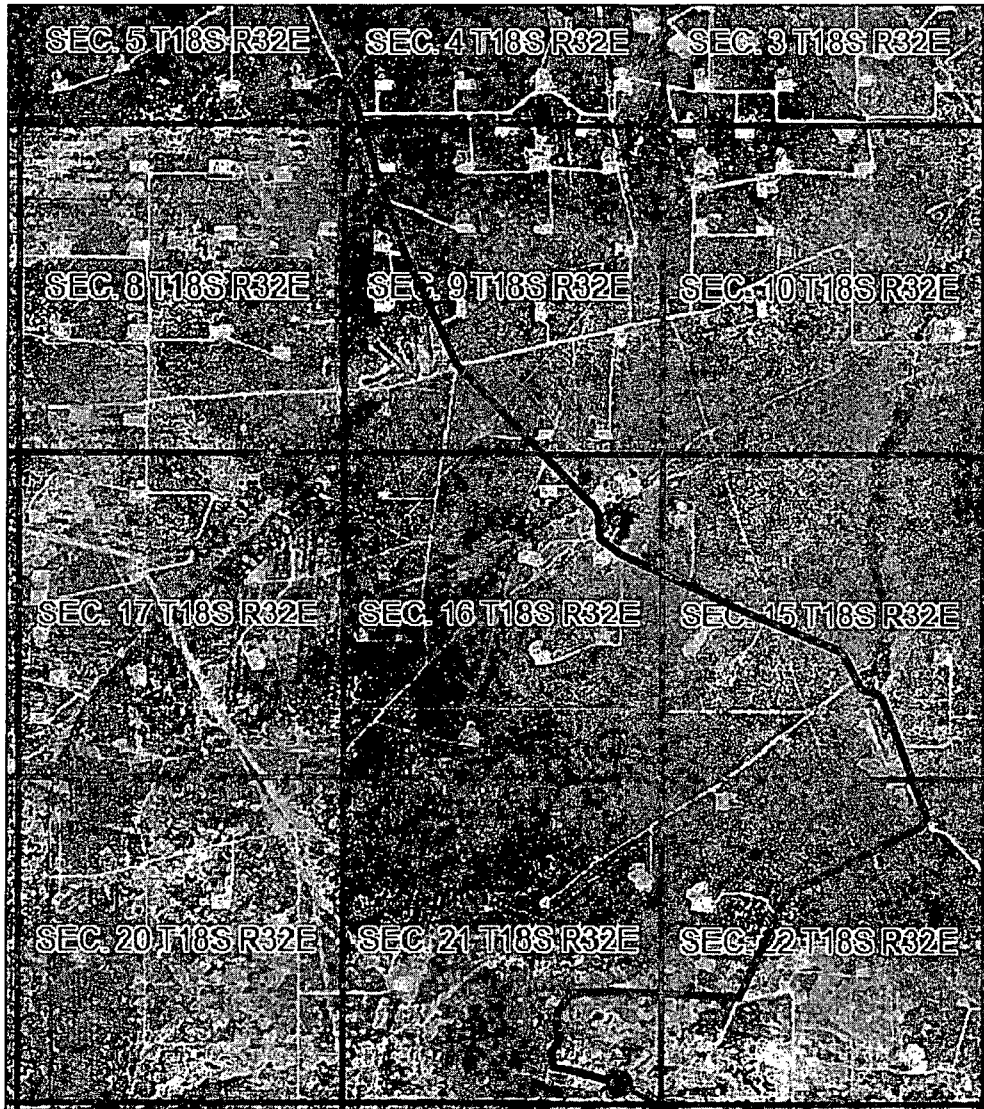
o (512) 992-2087 f (512) 251-2518

SCALE: 1" = 1000'
DATE: 9/9/13
SURVEYED BY: BK/IE
DRAWN BY: AF
APPROVED BY: LWB
SHEET : 1 OF 1

Exhibit " 3B "

VICINITY MAP

NOT TO SCALE



YOUNG 21 PM FEDERAL COM #1H

*SECTION 21, TWP. 17 SOUTH, RGE. 32 EAST,
N. M. P. M., LEA COUNTY, NEW MEXICO*

OPERATOR: Mewbourne Oil Company
LEASE: Young 21 PM Federal Com
WELL NO.: 1H

LOCATION: 297' FSL & 706' FEL
ELEVATION: 3750'

Copyright 2012 - All Rights Reserved

NO.	REVISION	DATE
JOB NO.: LS130360		
DWG. NO.: 130360VM		

PROSPERITY CONSULTANTS, LLC



2251 Double Creek Drive, Suite 602, Round Rock, Texas 78664

o (512) 992-2087 f (512) 251-2518

SCALE: N.T.S.
DATE: 9/9/13
SURVEYED BY: BK/IE
DRAWN BY: AF
APPROVED BY: LWB
SHEET : 1 OF 1



COMPANY: Mewbourne Oil Company
 WELL: Young 21 PM Federal Com #1H
 COUNTY: Lea County N.M.
 DATUM: NAD 1927 (NADCON CONUS)
 RIG: Patterson #110

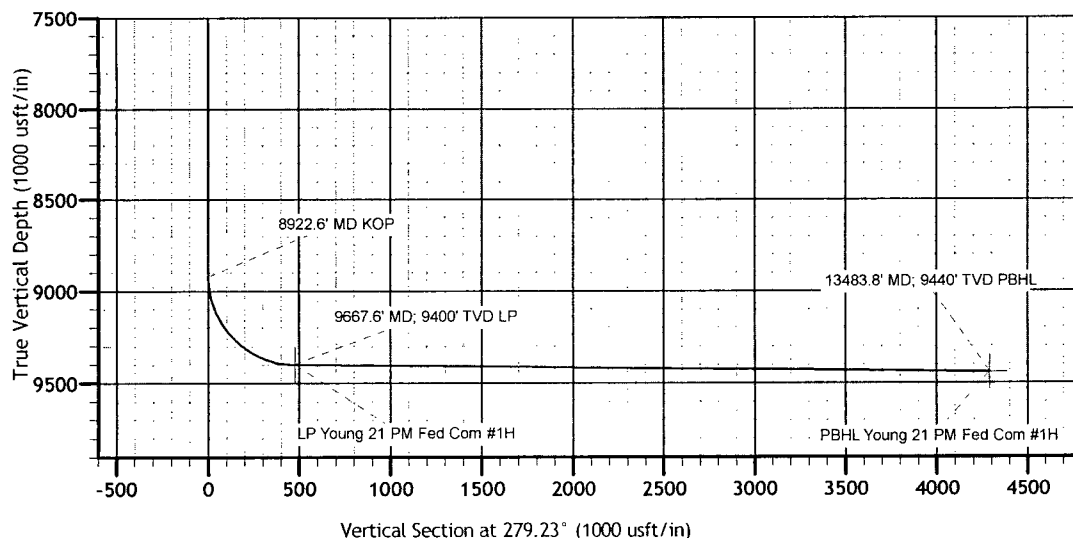
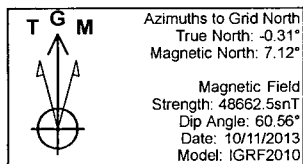
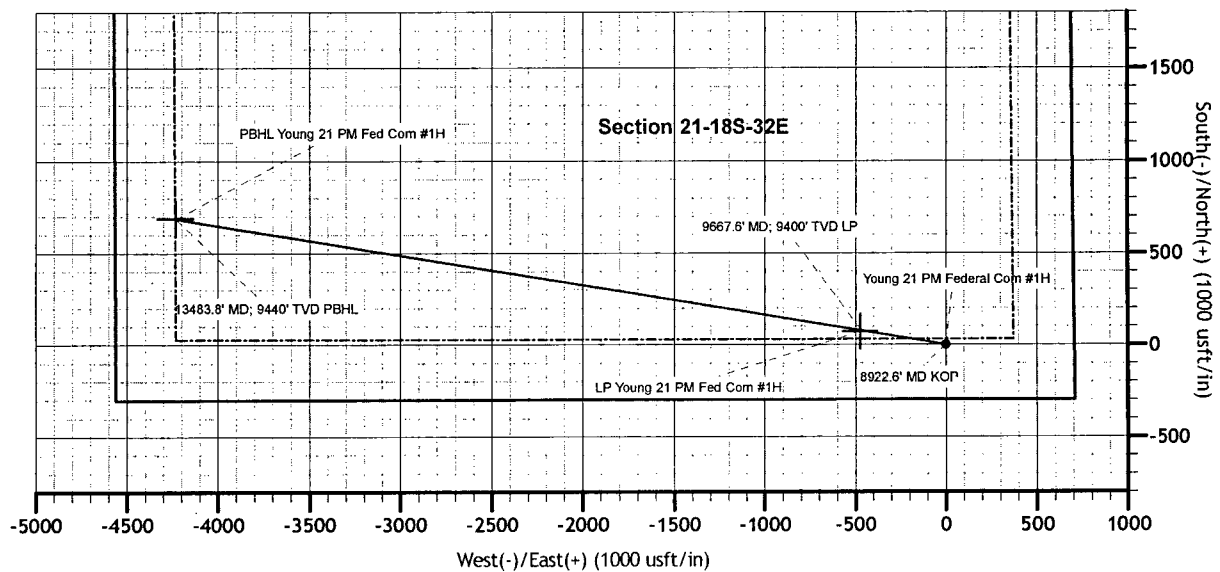


GRID CORRECTION: To convert a Magnetic Direction to a Grid Direction, Add 7.12°

OFFICE: 936.582.7296

GEODETIC ZONE: New Mexico East 3001							Slot
GL3750 + 20 @ 3770.0usft (Patterson #110)							
GROUND ELEVATION: 3750.0							
+N/-S	+E/-W	Northing	Easting	Latitude	Longitude		
0.0	0.0	628454.40	674913.20	32° 43' 35.137 N	103° 45' 52.422 W		

PLAN SECTIONS										
Sec	MD	Inc	Azi	TVD	+N/-S	+E/-W	Dleg	TFace	Vsect	Target
1	0.0	0.00	0.00	0.0	0.0	0.0	0.00	0.00	0.0	
2	8922.6	0.00	0.00	8922.6	0.0	0.0	0.00	0.00	0.0	
3	9667.6	89.40	279.23	9400.0	75.7	-466.4	12.00	279.23	472.5	
4	13483.8	89.40	279.23	9440.0	687.5	-4232.9	0.00	0.00	4288.4	PBHL Young 21 PM Fed Com #1H



JUN 23 2014