

DISTRICT I

1826 N. French Dr., Hobbs, NM 88240

DISTRICT II

811 South First, Artesia, NM 88210

DISTRICT III

1000 Rio Bravo Rd., Artesia, NM 87410

DISTRICT IV

2040 South Pacheco, Santa Fe, NM 87505

State of New Mexico

Energy, Minerals and Natural Resources Department

Form C-102

Revised August 1, 2011

Submit one copy to Appropriate
District Office

OIL CONSERVATION DIVISION

Santa Fe, New Mexico 87505

AMENDED REPORT

WELL LOCATION AND ACREAGE DEDICATION PLAT

| | | |
|-----------------------------------|---|---|
| API Number 30-025-41521 | Pool Code 96603 | Pool Name TRISTE DRAW BONE SPRING |
| Property Code 40257 | Property Name COX 35 FEDERAL | Well Number 2H |
| OGRID No. 162928 | Operator Name ENERGEN RESOURCES CORPORATION | Elevation 3628.4 |

Surface Location

| UL or lot No. | Section | Township | Range | Lot Idn | Feet from the | North/South line | Feet from the | East/West line | County |
|---------------|---------|----------|-------|---------|---------------|------------------|---------------|----------------|--------|
| 0 | 35 | 23-S | 32-E | | 200 | South | 2240 | East | LEA |

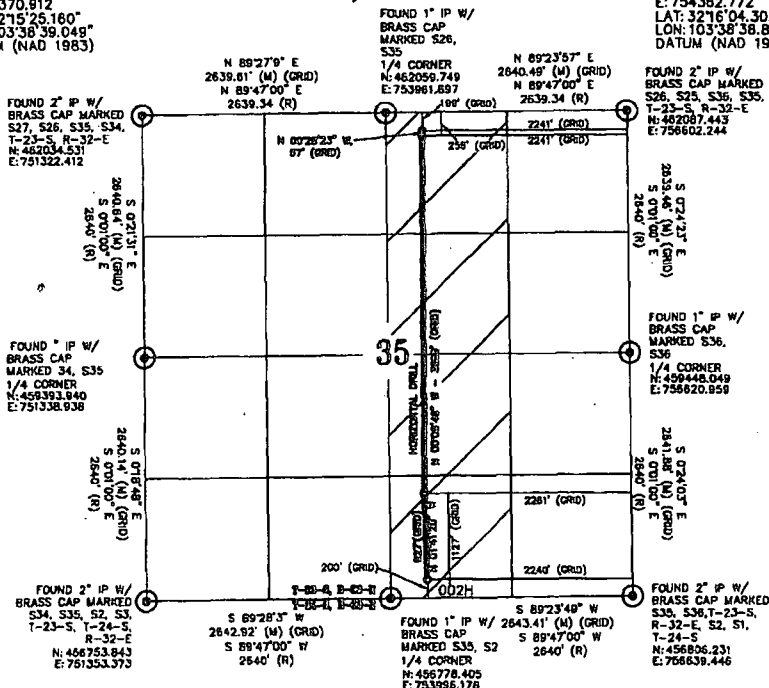
Bottom Hole Location If Different From Surface

| UL or lot No. | Section | Township | Range | Lot Idn | Feet from the | North/South line | Feet from the | East/West line | County |
|-------------------------------|-----------------|--------------------|-----------|---------|---------------|------------------|---------------|----------------|--------|
| B | 35 | 23-S | 32-E | | 199 | North | 2241 | East | LEA |
| Dedicated Acres 180 | Joint or Infill | Consolidation Code | Order No. | | | | | | |

NO ALLOWABLE WILL BE ASSIGNED TO THIS COMPLETION UNTIL ALL INTERESTS HAVE BEEN CONSOLIDATED
OR A NON-STANDARD UNIT HAS BEEN APPROVED BY THE DIVISION

COX FEDERAL 35-2H
N: 456982.552
E: 754398.242
LAT: 32°15'15.986"
LON: 103°38'38.800"
DATUM (NAD 1983)

FIRST TAKE POINT LOCATION
N: 457909.552
E: 754370.912
LAT: 32°15'25.160"
LON: 103°38'39.049"
DATUM (NAD 1983)

SECTION 35
T-23-S, R-32-E

NOTES:

1. COORDINATES AND BEARINGS ARE BASED ON LAMBERT CONICAL PROJECTION OF THE STATE PLANE COORDINATE SYSTEM NAD 83, CORRS 95, TEXAS CENTRAL ZONE WITH A CONVERGENCE ANGLE OF 0.37067599 AND DISTANCES ARE OF GRID VALUE WITH A CENTRAL COMBINED SCALE FACTOR OF 0.99978903. THE POSITIONAL TOLERANCE OF THIS SURVEY EXCEEDS THE REQUIREMENTS FOR A CONSTRUCTION SURVEY.

2. SCALE 1" = 2000'

LAST TAKE POINT LOCATION
N: 461808.342
E: 754383.242
LAT: 32°16'03.740"
LON: 103°38'38.847"
DATUM (NAD 1983)

BOTTOM HOLE LOCATION
N: 451865.282
E: 754382.772
LAT: 32°16'04.303"
LON: 103°38'38.848"
DATUM (NAD 1983)

OPERATOR CERTIFICATION

I hereby certify that the information contained herein is true and complete to the best of my knowledge and belief, and that this organization either owns a working interest or unleased mineral interest in the land including the proposed bottom hole location or has a right to drill this well at this location pursuant to a contract with an owner of such a mineral or working interest, or to a voluntary pooling agreement or compulsory pooling order heretofore entered by the division.

Signature

Date 4/30/14

Brenda F. Rathjen

Printed Name

4/30/14

Date

SURVEYOR CERTIFICATION

I hereby certify that the well location shown on this plat was plotted from field notes of actual surveys made under my supervision and that the same are true and correct to the best of my belief.

Date Surveyed

4/2/14

Signature & Seal

Professional Surveyor

No. 3959

NEW MEXICO

WILSON D. WATSON JR.

P.L.S. #3959

WATSON PROFESSIONAL GROUP INC

Certificate No. WILSON D. WATSON JR.
P.L.S. #3959

WSP-3-1125-000

WATSON PROFESSIONAL GROUP INC

JUN 26 2014

SECTION 35, T23S, R32E

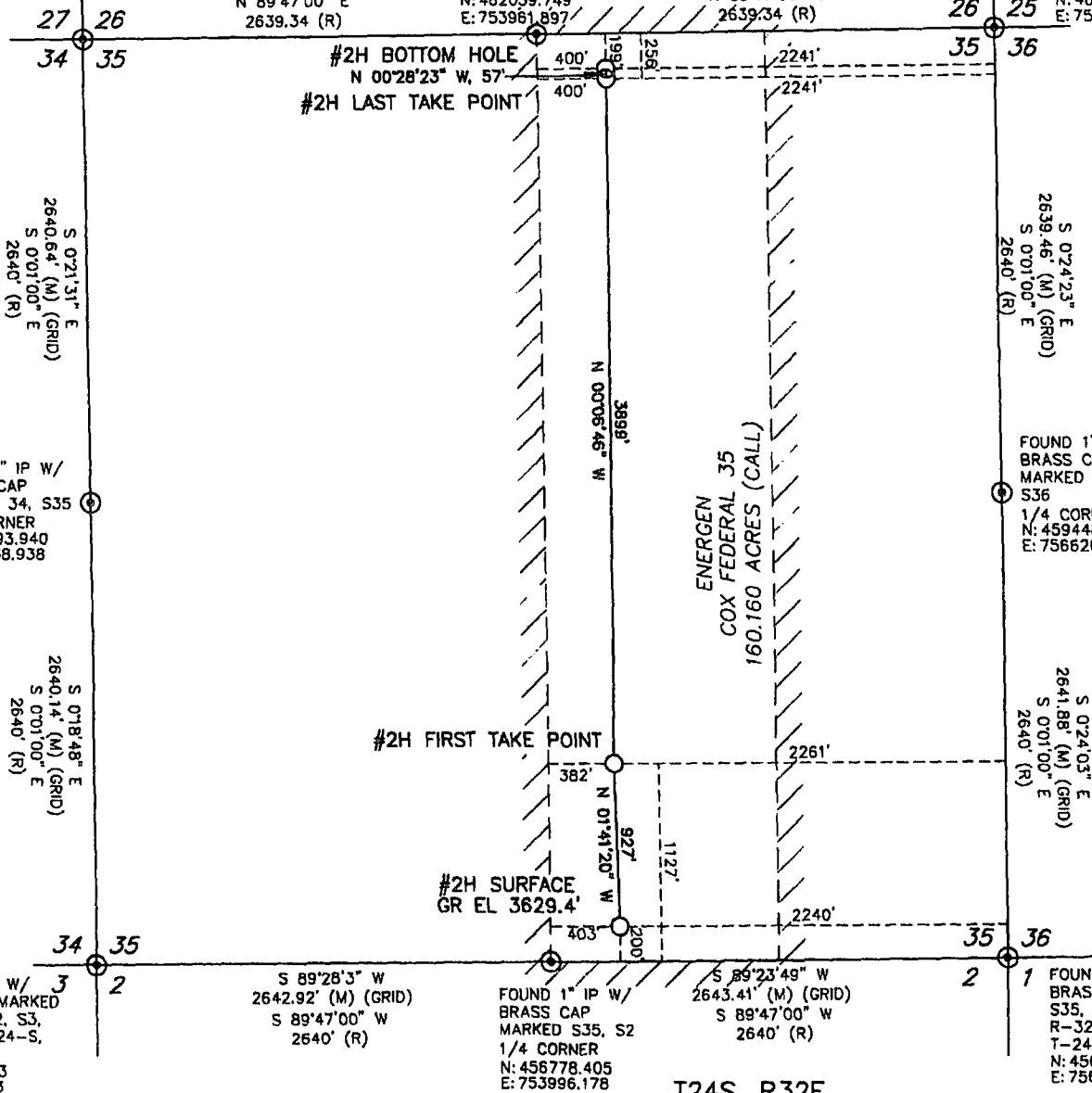
FOUND 2" IP W/
BRASS CAP MARKED
S27, S26, S35, S34,
T-23-S, R-32-E
N: 462034.531
E: 751322.412

N 89°27'9" E
2639.61' (M) (GRID)
N 89°47'00" E
2639.34 (R)

FOUND 1" IP W/
BRASS CAP MARKED
S26, S35
1/4 CORNER
N: 462059.749
E: 753981.897

N 89°23'57" E
2640.49' (M) (GRID)
N 89°47'00" E
2639.34 (R)

FOUND 2" IP W/
BRASS CAP MARKED
S26, S25, S36, S35,
T-23-S, R-32-E
N: 462087.443
E: 756602.244



T24S, R32E

NAD 83, NEW MEXICO EAST ZONE

| | |
|-------------------------------|--|
| S/L: N=456982.7', E=754398.2' | LAT=32°15'16.0" N, LONG=103°38'38.8" W |
| 1/P: N=457909.6', E=754370.9' | LAT=32°15'25.2" N, LONG=103°38'39.0" W |
| L/P: N=461808.3', E=754363.2' | LAT=32°16'03.7" N, LONG=103°38'38.8" W |
| B/H: N=461865.3', E=754362.8' | LAT=32°16'04.3" N, LONG=103°38'38.8" W |

- ☼ GAS WELL
- △ WATER INJECTION WELL
- OIL WELL
- LOCATED WELL
- DRY HOLE
- ⊗ WATER WELL
- ⊘ SHUT IN WELL

NOTES:

- COORDINATES AND BEARINGS ARE BASED ON A LAMBERT CONICAL PROJECTION OF THE STATE PLANE COORDINATE SYSTEM NAD 83, CORRS 96, NEW MEXICO EAST ZONE AND WERE OBTAINED FROM NORMAL GPS TECHNIQUES.
- THIS SURVEY WAS PERFORMED WITHOUT THE BENEFIT OF A TITLE REPORT AND REVIEW OF THE ABSTRACT OF TITLE. THERE MAY BE EASEMENTS AND/OR COVENANTS AFFECTING THIS PROPERTY NOT SHOWN HEREON. LOCATION OF IMPROVEMENTS AND/OR EASEMENTS WERE BEYOND COMMISSIONED SCOPE OF THIS PROJECT AND HAVE BEEN SPECIFICALLY OMITTED. VESTING DOCUMENTS NOT FURNISHED FOR THIS SURVEY.
- SEE DOCUMENTS AND ELECTRONIC DATA FILED IN THE OFFICE OF WPG INC FOR COMPLETE RECONSTRUCTION OF THESE SECTIONS OR BLOCKS.
- DOWNHOLE INFORMATION PROVIDED BY ENERGEN PERSONNEL.
- SURFACE LOCATION IN THE AS-STAKED POSITION.

I HEREBY CERTIFY THAT THE FOREGOING DESCRIPTION AND PLAT ATTACHED HERETO IS A REPRESENTATION OF A SURVEY COMPLETED ON THE GROUND UNDER MY SUPERVISION AND IS TRUE AND CORRECT TO THE BEST OF MY KNOWLEDGE AND BELIEF.



W.D. Watson, Jr. TEXAS R.P.L.S. No. 1989
FILE: T:LEA\T23S R32E.dwg

3/17/14
DATE

Watson
Professional
Group Inc



P.O. DRAWER 11186
MIDLAND, TEXAS 79702
(432) 520-9200
FAX (432) 520-9212
wdwatson@wpg-us.com

CONSULTING ENGINEERS, LAND SURVEYORS & PLANNERS

ENERGEN RESOURCES CORPORATION
COX FEDERAL 35 2H
SURFACE LOCATION: 2000' FSL & 486' FEL
1ST TAKE POINT: 1894' FSL & 1457' FEL
LAST TAKE POINT: 2001' FNL & 281' FEL
BOTTOM HOLE: 2002' FNL & 200' FEL

SECTION 35, T23S, R32E, LEA COUNTY, NEW MEXICO

DATE: MARCH 17, 2014

DATE SURVEYED: 3/13/13

JOB NO.: 13-1155-00 FIELD BOOK 710/38

DRAFT TA REV. 0