

District I
1625 N. French Dr., Hobbs, NM 88240
Phone: (575) 393-6161 Fax: (575) 393-0720
District II
811 S. First St., Artesia, NM 88210
Phone: (575) 748-1283 Fax: (575) 748-9720
District III
1000 Rio Brazos Road, Aztec, NM 87410
Phone: (505) 334-6178 Fax: (505) 334-6170
District IV
1220 S. St. Francis Dr., Santa Fe, NM 87505
Phone: (505) 476-3460 Fax: (505) 476-3462

State of New Mexico
Energy, Minerals & Natural Resources Department
OIL CONSERVATION DIVISION
1220 South St. Francis Dr.
Santa Fe, NM 87505

Form C-102
Revised August 1, 2011
Submit one copy to appropriate
District Office

JUL 14 2014

☐ AMENDED REPORT

WELL LOCATION AND ACREAGE DEDICATION PLAT

¹ API Number 30-025-42009	² Pool Code 97929	³ Pool Name WC-025 G-06 S213323D; BONE SPRING
⁴ Property Code 39652	⁵ Property Name BATTLE	⁶ Well Number 2H
⁷ OGRID No. 160825	⁸ Operator Name B.C. OPERATING, INC.	⁹ Elevation 3672

¹⁰ Surface Location

UL or lot no.	Section	Township	Range	Lot Idn	Feet from the	North/South line	Feet from the	East/West line	County
0	27	T21S	R33E		240'	SOUTH	1660'	EAST	LEA

¹¹ Bottom Hole Location If Different From Surface

UL or lot no.	Section	Township	Range	Lot Idn	Feet from the	North/South line	Feet from the	East/West line	County
0	34	T21S	R33E		240'	SOUTH	1660'	EAST	LEA

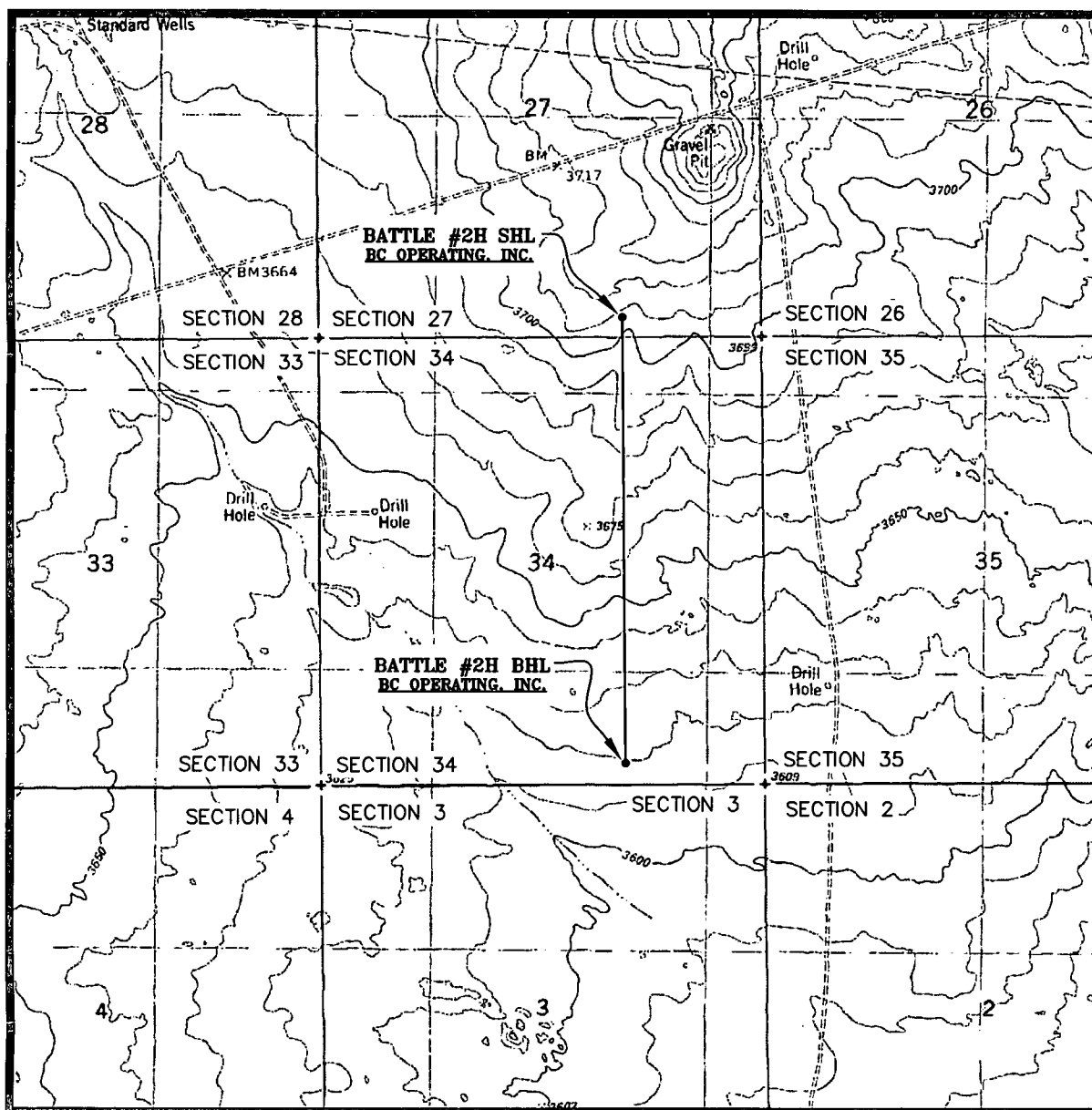
¹² Dedicated Acres 160.00	¹³ Joint or Infill	¹⁴ Consolidation Code	¹⁵ Order No.
--	-------------------------------	----------------------------------	-------------------------

No allowable will be assigned to this completion until all interests have been consolidated or a non-standard unit has been approved by the division.

¹⁶ SURFACE HOLE LOCATION NAD 83, SPCS NM EAST X: 780783.24' / Y: 525845.22' LAT: 32.44322175N / LON: 103.55715107W NAD 27, SPCS NM EAST X: 739601.04' / Y: 525784.11' LAT: 32.44309836N / LON: 103.55666546W		¹⁷ OPERATOR CERTIFICATION I hereby certify that the information contained herein is true and complete to the best of my knowledge and belief, and that this organization either owns a working interest or unleased mineral interest in the land including the proposed bottom hole location or has a right to drill this well at this location pursuant to a contract with an owner of such a mineral or working interest, or to a voluntary pooling agreement or a compulsory pooling order heretofore entered by the division. Signature: <u>Pam Stevens</u> Date: <u>7/7/14</u> Printed Name: <u>Pam Stevens</u> E-mail Address: <u>pstevens@bcoperating.com</u>	
CORNER COORDINATES NAD 83, SPCS NM EAST A - Y: 525599.40' / X: 779798.78' B - Y: 525607.22' / X: 781121.70' C - Y: 520329.51' / X: 781167.88' D - Y: 520322.85' / X: 779847.21' NAD 27, SPCS NM EAST A - Y: 525538.30' / X: 738616.58' B - Y: 525546.12' / X: 739939.49' C - Y: 520268.56' / X: 739985.55' D - Y: 520261.91' / X: 738664.89'		"SURVEYOR CERTIFICATION" I hereby certify that the well location shown on this plat was plotted from field notes of actual surveys made by me or under my supervision, and that the same is true and correct to the best of my belief. Date of Survey: <u>JULY 2, 2014</u> Signature and Seal of Professional Surveyor: <u>Lloyd P. Short</u> Certificate Number: <u>LLOYD P. SHORT 21653</u>	

JUL 31 2014

LOCATION VERIFICATION MAP

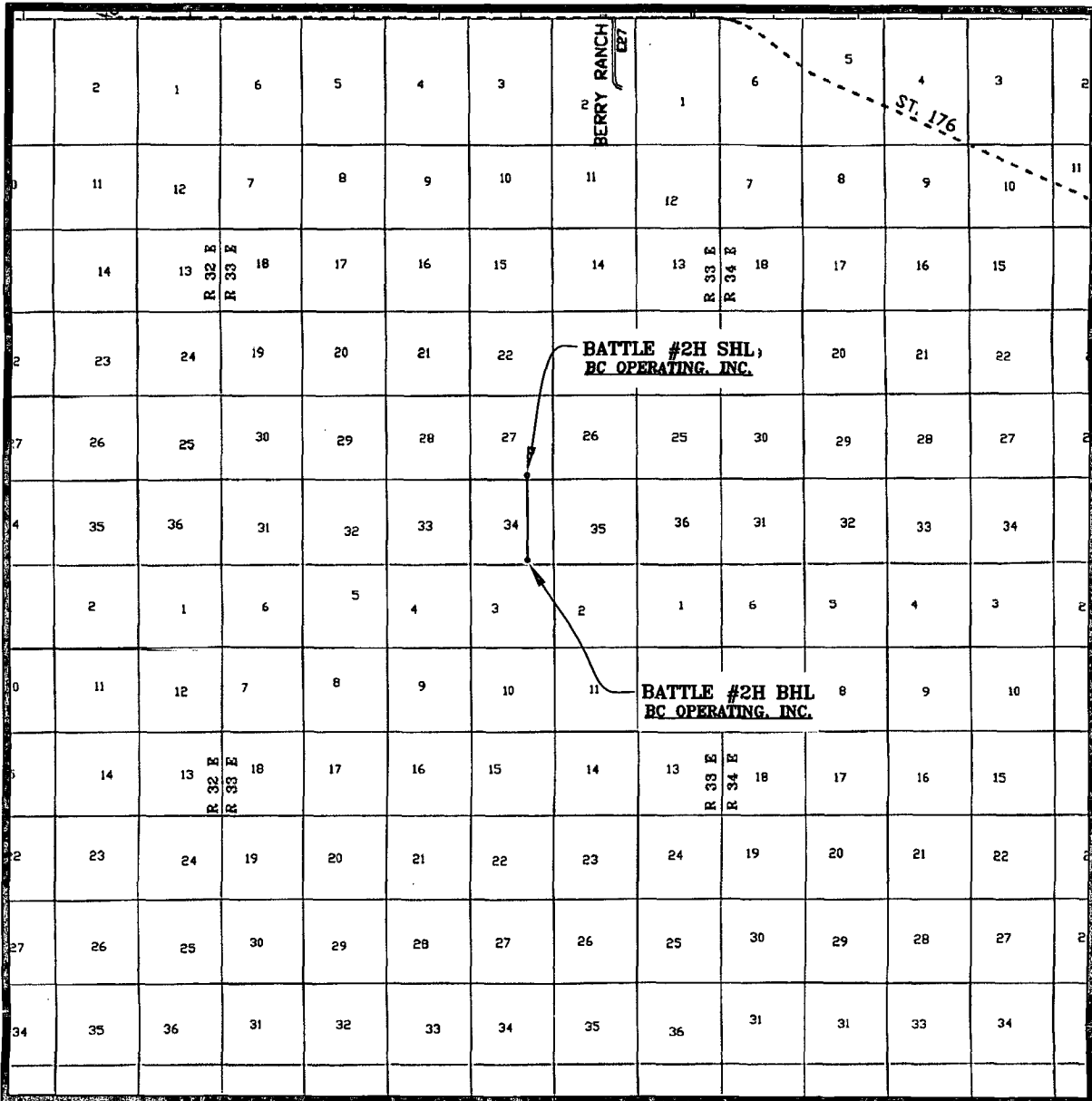


SEC. 27 TWP. 21-S RGE. 33-E
 SURVEY: N.M.P.M.
 COUNTY: LEA
 DESCRIPTION: 240' FSL & 1660' FEL
 ELEVATION: 3672'
 OPERATOR: B.C. OPERATING, INC.
 LEASE: BATTLE
 U.S.G.S. TOPOGRAPHIC MAP: GRAMA RIDGE, N.M.

SCALE: 1" = 2000'
 CONTOUR INTERVAL = 5'

PREPARED BY:
 R-SQUARED GLOBAL, LLC
 1309 LOUISVILLE AVENUE, MONROE, LA 71201
 318-323-6900 OFFICE

VICINITY MAP



SEC. 27 TWP. 21-S RGE. 33-E
 SURVEY: N.M.P.M.
 COUNTY: LEA
 DESCRIPTION: 240' FSL & 1660' FEL
 ELEVATION: 3672'
 OPERATOR: B.C. OPERATING, INC.
 LEASE: BATTLE
 U.S.G.S. TOPOGRAPHIC MAP: GRAMA RIDGE, N.M.

SCALE: 1" = 2 MILES

PREPARED BY:
 R-SQUARED GLOBAL, LLC
 1309 LOUISVILLE AVENUE, MONROE, LA 71201
 318-323-6900 OFFICE

BC Operating, Inc. Closed Loop System

Design Plan

Equipment List

- 2 – 414 MI Swaco *Centrifuges*
- 2 – MI Swaco 4 screen Moongoose *Shale Shakers*
- 2 – double screen *Shakers* with rig inventory
- 2 – CRI *Haul off bins* with track system
- 2 – additional 500bbl *Frac tanks* for fresh and brine water
- 2 – 500bbl *water tanks* with rig inventory

**Equipment manufactures may vary due to availability but components will not.*

Operation and Maintenance

The system along with equipment will be inspected numerous times a day by each tour to make sure all equipment is operating correctly. Routine maintenance will be done to keep system running properly. Any leak in system will be repaired and/or contained immediately and the OCD notified within 48 hours of the remediation process start.

Closure Plan

While drilling, all cuttings and fluids associated with drilling will be hauled off and disposed of via Controlled Recovery Incorporated Facilities Permit NM01-0006.

