

District I
1625 N. French Dr., Hobbs, NM 88240
Phone: (575) 393-6161 Fax: (575) 393-0720
District II
811 S. First St., Artesia, NM 88210
Phone: (575) 748-1283 Fax: (575) 748-9720
District III
1000 Rio Brazos Road, Aztec, NM 87410
Phone: (505) 334-6178 Fax: (505) 334-6170
District IV
1220 S. St. Francis Dr., Santa Fe, NM 87505
Phone: (505) 476-3460 Fax: (505) 476-3462

State of New Mexico
Energy, Minerals & Natural Resources Department
OIL CONSERVATION DIVISION
1220 South St. Francis Dr.
Santa Fe, NM 87505

Form C-102
Revised August 1, 2011
Submit one copy to appropriate
District Office

AUG 05 2014

☐ AMENDED REPORT

RECEIVED

WELL LOCATION AND ACREAGE DEDICATION PLAT

| | | |
|---|--|---|
| 30-025- ¹ API Number 42019 | 57380 ² Pool Code | Skaggs; Grayburg ³ Pool Name |
| ⁴ Property Code 31670 | ⁵ Property Name SEMU | |
| ⁶ Well Number 247 | ⁸ Operator Name ConocoPhillips Company | |
| ⁷ OGRID No. 217817 | ⁹ Elevation 3539' | |

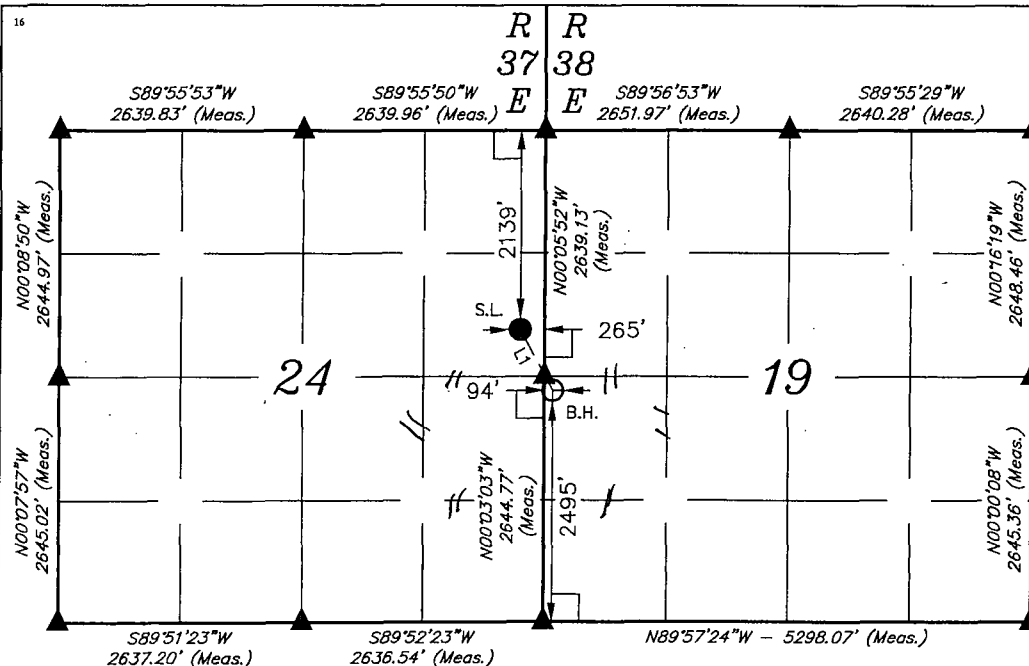
¹⁰ Surface Location

| UL or lot no. | Section | Township | Range | Lot Idn | Feet from the | North/South line | Feet from the | East/West line | County |
|---------------|---------|----------|-------|---------|---------------|------------------|---------------|----------------|--------|
| H | 24 | 20S | 37E | | 2139 | NORTH | 265 | EAST | LEA |

¹¹ Bottom Hole Location If Different From Surface

| UL or lot no. | Section | Township | Range | Lot Idn | Feet from the | North/South line | Feet from the | East/West line | County |
|--|-------------------------------|----------------------------------|-------------------------|---------|---------------|------------------|---------------|----------------|--------------|
| L 3 | 19 | 20S | 38E | | 2495 | SOUTH | 94 | WEST | LEA 7 |
| ¹² Dedicated Acres 120.80 | ¹³ Joint or Infill | ¹⁴ Consolidation Code | ¹⁵ Order No. | | | | | | |

No allowable will be assigned to this completion until all interests have been consolidated or a non-standard unit has been approved by the division.



| NAD 83 (SURFACE LOCATION) | NAD 83 (BOTTOM HOLE) |
|----------------------------|----------------------------|
| LATITUDE = 32°33'35.85\" | LATITUDE = 32°33'29.42\" |
| LONGITUDE = 103°11'50.34\" | LONGITUDE = 103°11'46.13\" |
| NAD 27 (SURFACE LOCATION) | NAD 27 (BOTTOM HOLE) |
| LATITUDE = 32°33'35.42\" | LATITUDE = 32°33'28.99\" |
| LONGITUDE = 103°11'48.62\" | LONGITUDE = 103°11'44.42\" |
| STATE PLANE NAD 83 | STATE PLANE NAD 83 |
| N: 569311.11 E: 891342.21 | N: 568664.98 E: 891709.19 |
| STATE PLANE NAD 27 | STATE PLANE NAD 27 |
| N: 569250.33 E: 850159.22 | N: 568604.23 E: 850526.17 |

| LINE TABLE | | |
|------------|--------------|---------|
| LINE | DIRECTION | LENGTH |
| L1 | S28°58'56\"E | 743.15' |



▲ = SECTION CORNERS LOCATED.

¹⁷ OPERATOR CERTIFICATION

I hereby certify that the information contained herein is true and complete to the best of my knowledge and belief, and that this organization either owns a working interest or unleased mineral interest in the land including the proposed bottom hole location or has a right to drill this well at this location pursuant to a contract with an owner of such a mineral or working interest, or to a voluntary pooling agreement or a compulsory pooling order heretofore entered by the division.

Susan B Maunder 2/7/14
Signature Date

Susan B Maunder
Printed Name

Susan.B.Maunder@conocophillips.com
E-mail Address

¹⁸ SURVEYOR CERTIFICATION

I hereby certify that the well location shown on this plat was plotted from field notes of actual surveys made by me or under my supervision, and that the same is true and correct to the best of my belief.

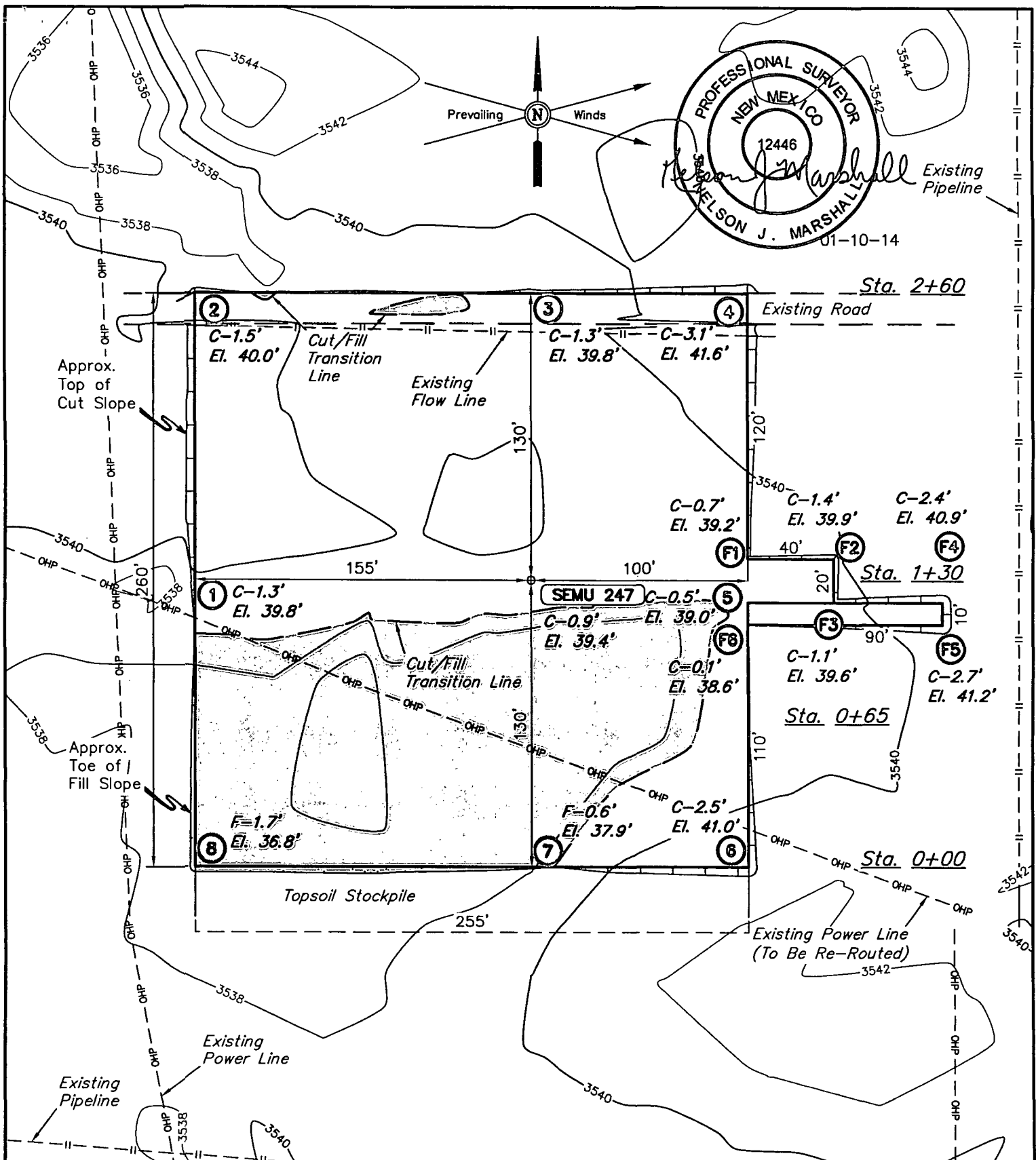
December 15, 2013

Date of Survey
Signature and Seal of Professional Surveyor:



Certificate Number:

Am AUG 07 2014



ELEV. UNGRADED GROUND AT LOC. STAKE = 3539.4' FINISHED GRADE ELEV. AT LOC. STAKE = 3538.5'

NOTES:

- Flare pit is to be located a min. of 100' from the well head.
- Underground utilities shown on this sheet are for visualization purposes only, actual locations to be determined prior to construction.
- Construct Diversion Ditches as needed.

ConocoPhillips

ConocoPhillips Company

SEMU 247
SECTION 24, T20S, R37E, N.M.P.M.
2139' FNL 265' FEL

DRAWN BY: S.F.

SCALE: 1" = 60'

DATE: 01-07-14

REVISED:

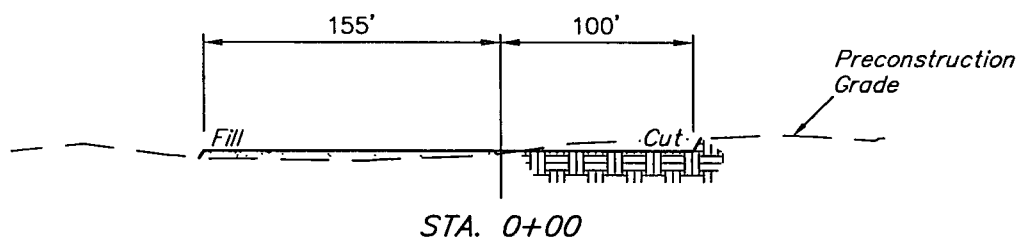
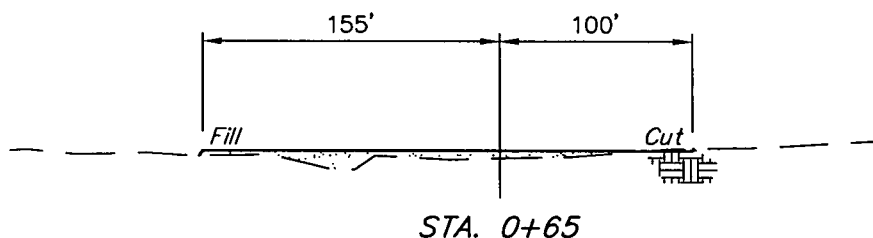
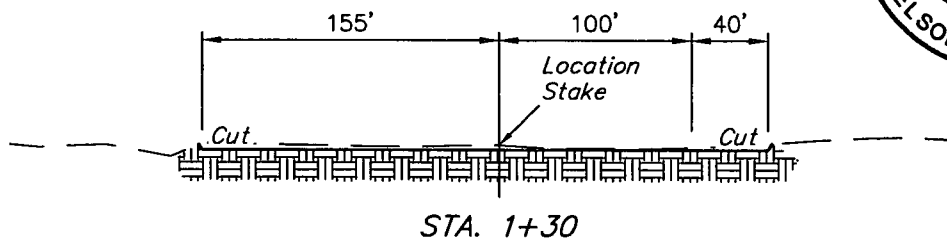
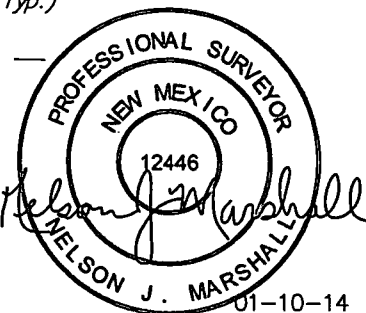
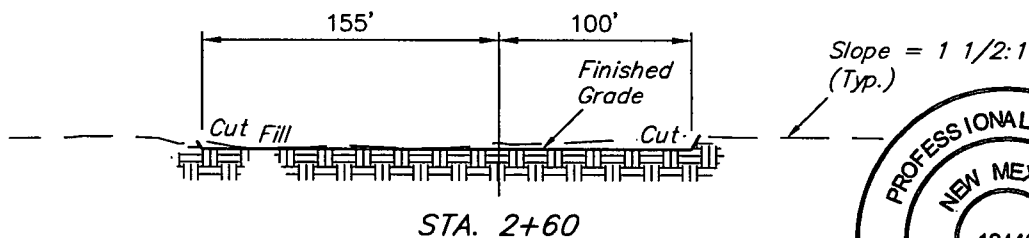
LOCATION LAYOUT

FIGURE #1



Corporate Office * 85 South 200 East
Vernal, UT 84078 * (435) 789-1017

1" = 40'
X-Section Scale
1" = 100'



| APPROXIMATE EARTHWORK QUANTITIES | | APPROXIMATE SURFACE DISTURBANCE AREAS | | |
|--|----------------|---------------------------------------|------------|--------|
| (3") TOPSOIL STRIPPING | 650 Cu. Yds. | | DISTANCE | ACRES |
| REMAINING LOCATION | 1,540 Cu. Yds. | WELL SITE DISTURBANCE | NA | ±1.620 |
| TOTAL CUT | 2,190 Cu. Yds. | PIPELINE DISTURBANCE | ±2,737.07' | ±0.377 |
| FILL | 1,540 Cu. Yds. | POWER LINE DISTURBANCE | ±423.65' | ±0.097 |
| EXCESS MATERIAL | 650 Cu. Yds. | TOTAL DISTURBANCE | ±3160.72' | ±2.094 |
| TOPSOIL | 650 Cu. Yds. | | | |
| EXCESS UNBALANCE (After Interim Rehabilitation) | 0 Cu. Yds. | | | |

NOTES:

- Fill quantity includes 5% for compaction.
- Topsoil should not be stripped below finished grade on substructure area.

ConocoPhillips

ConocoPhillips Company

SEMU 247
SECTION 24, T20S, R37E, N.M.P.M.
2139' FNL 265' FEL

DRAWN BY: S.F.

SCALE: AS SHOWN

DATE: 01-07-14

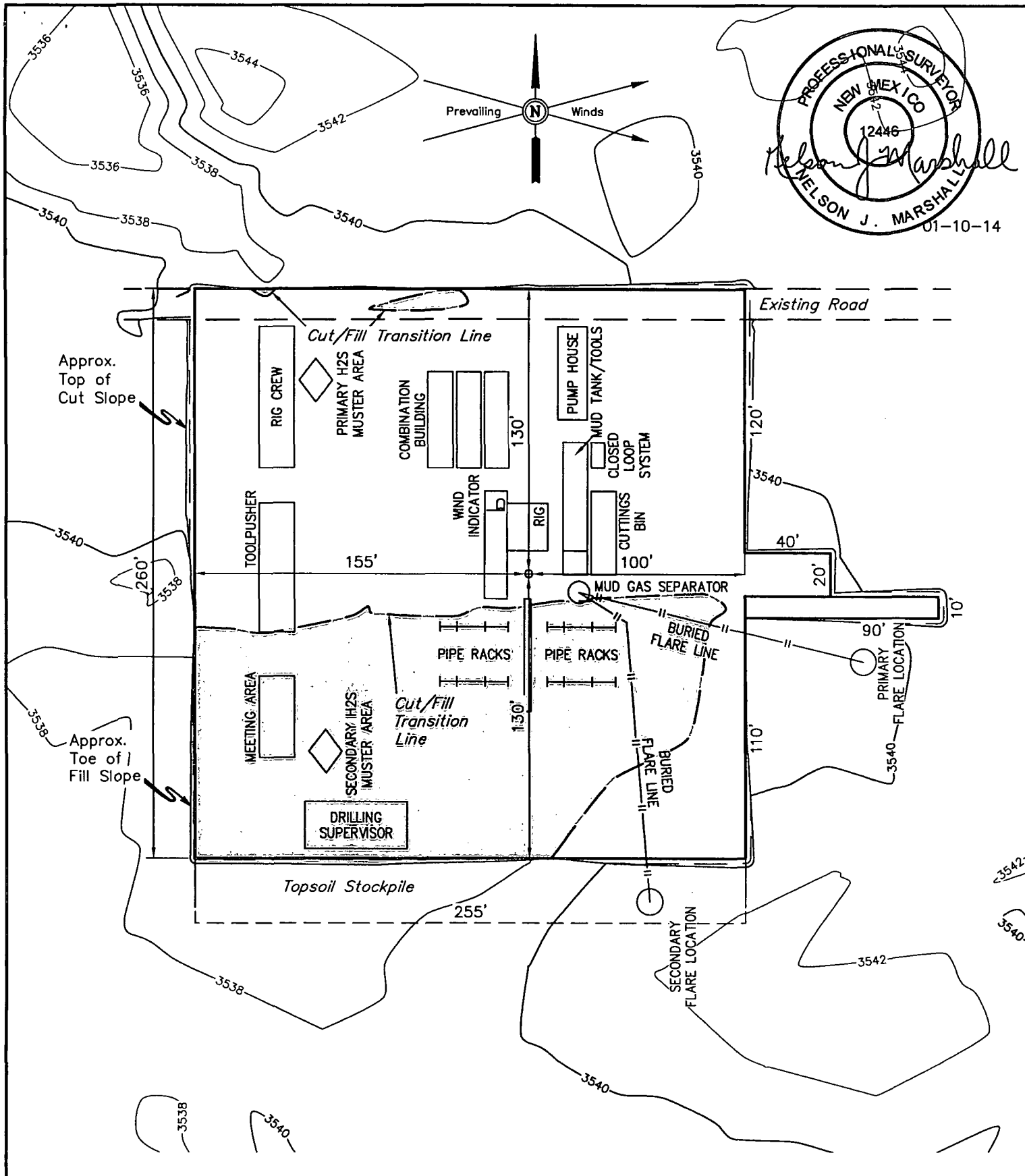
REVISED:



Corporate Office * 85 South 200 East
Vernal, UT 84078 * (435) 789-1017

TYPICAL CROSS SECTIONS

FIGURE #2



NOTES:
 • Flare pit is to be located a min. of 160' from the well head.

ConocoPhillips

ConocoPhillips Company

SEMU 247
 SECTION 24, T20S, R37E, N.M.P.M.
 2139' FNL 265' FEL

DRAWN BY: S.F.

SCALE: 1" = 60'

DATE: 01-07-14

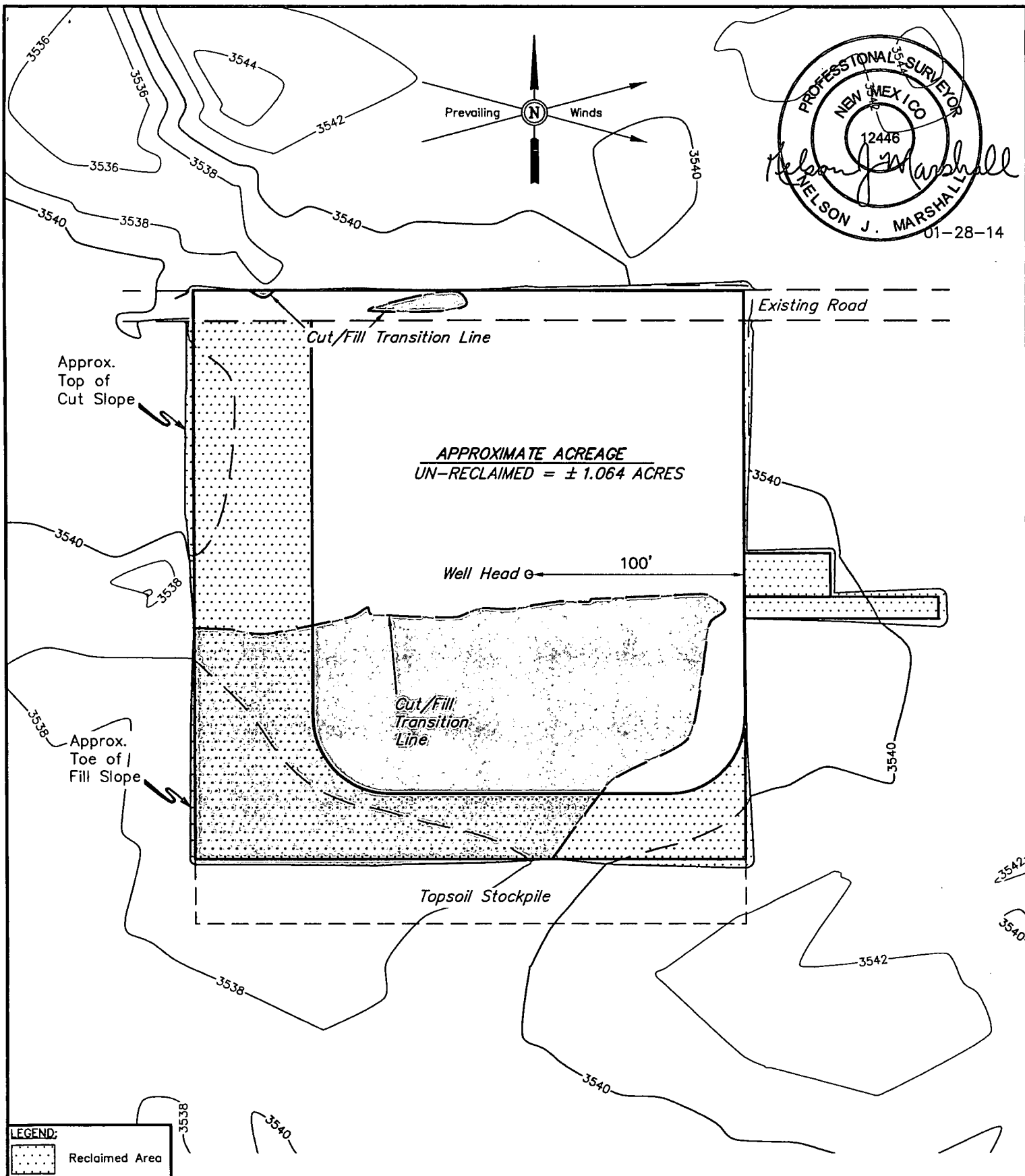
REVISED:

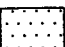
TYPICAL RIG LAYOUT

FIGURE #3



Corporate Office * 85 South 200 East
 Vernal, UT 84078 * (435) 789-1017



LEGEND:
 Reclaimed Area

NOTES:

ConocoPhillips

ConocoPhillips Company

SEMU 247
SECTION 24, T20S, R37E, N.M.P.M.
2139' FNL 265' FEL

DRAWN BY: S.F.

SCALE: 1" = 60'

DATE: 01-07-14

REVISED: 01-28-14 S.F.

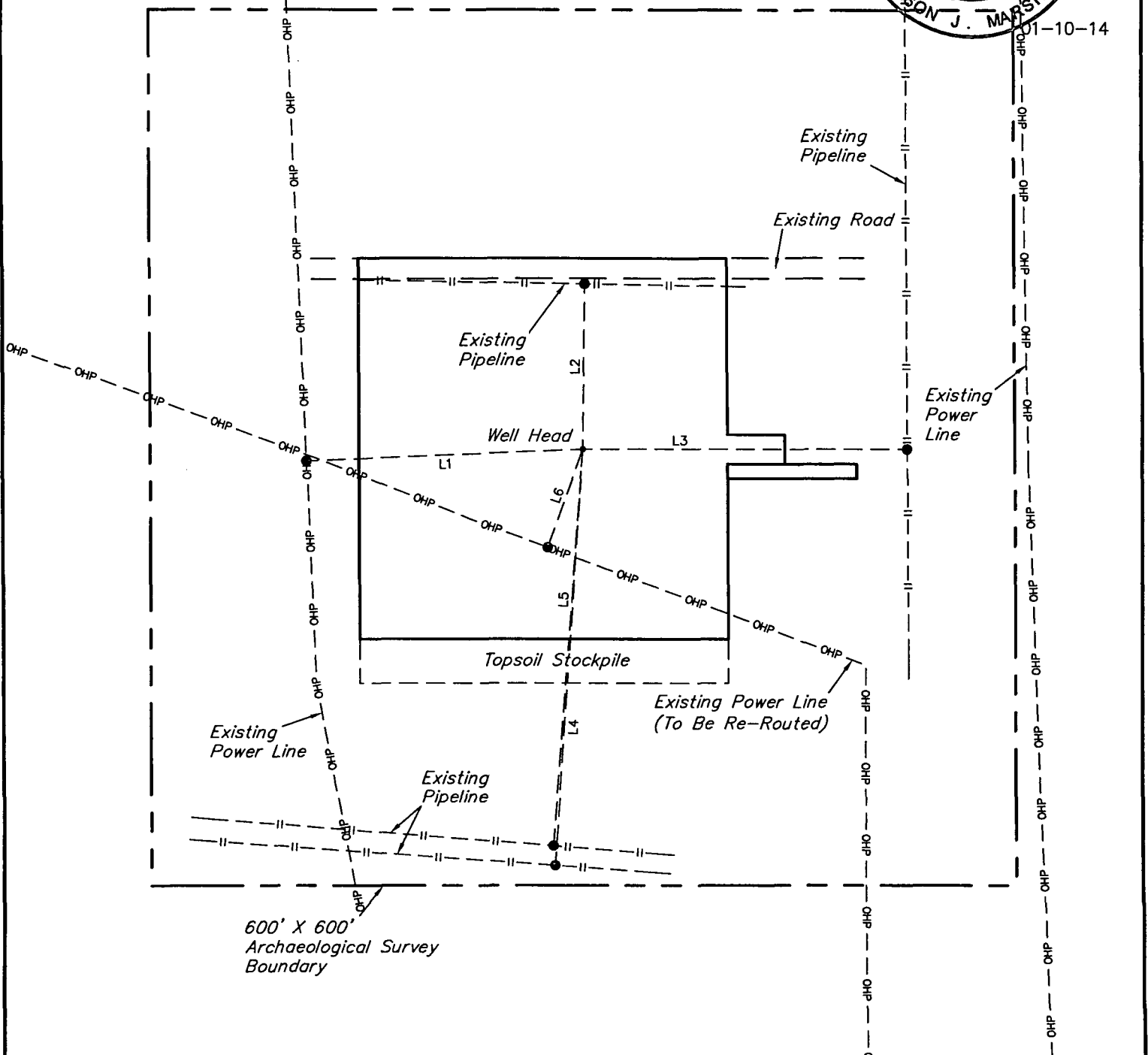
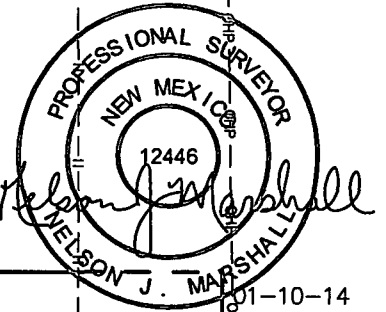
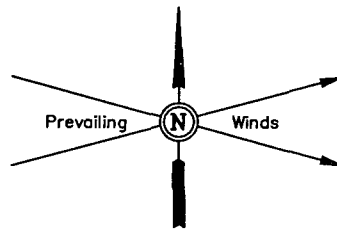


Corporate Office * 85 South 200 East
Vernal, UT 84078 * (435) 789-1017

RECLAMATION DIAGRAM

FIGURE #4

| LINE TABLE | | | LINE TABLE | | |
|------------|-----------|--------|------------|-----------|--------|
| LINE | DIRECTION | LENGTH | LINE | DIRECTION | LENGTH |
| L1 | S88°W | 191' | L4 | S04°W | 287' |
| L2 | N01°E | 113' | L5 | S04°W | 273' |
| L3 | N90°E | 225' | L6 | S20°W | 72' |



NOTES:

ConocoPhillips

ConocoPhillips Company

SEMU 247
SECTION 24, T20S, R37E, N.M.P.M.
2139' FNL 265' FEL

DRAWN BY: S.F.

SCALE: 1" = 100'

DATE: 01-07-14

REVISED:

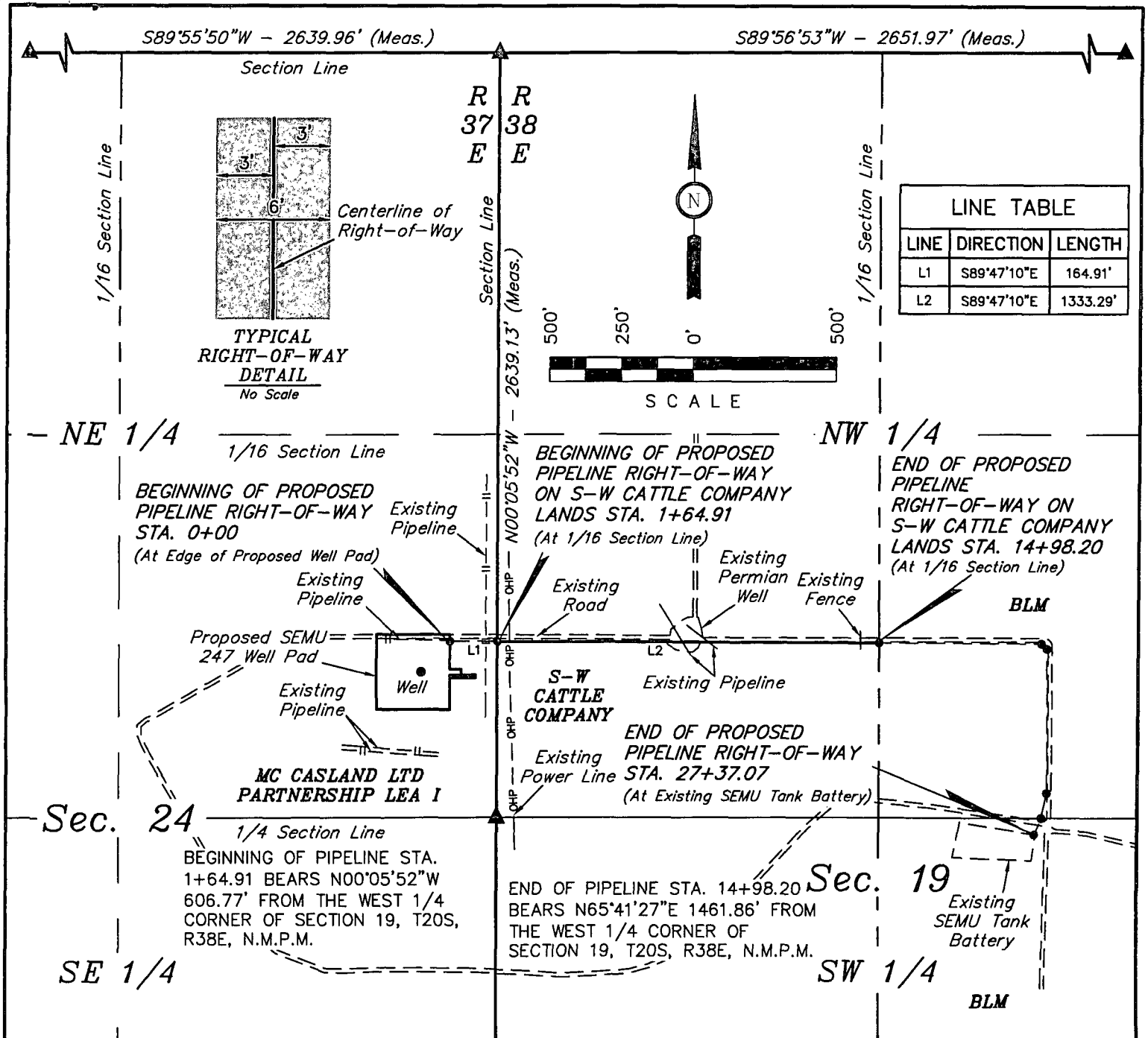
ARCHAEOLOGICAL SURVEY

BO NDARY

FIGURE #5



Corporate Office * 85 South 200 East
Vernal, UT 84078 * (435) 789-1017



| LINE TABLE | | |
|------------|-------------|----------|
| LINE | DIRECTION | LENGTH |
| L1 | S89°47'10"E | 164.91' |
| L2 | S89°47'10"E | 1333.29' |

PIPELINE RIGHT-OF-WAY DESCRIPTION ON SW CATTLE COMPANY LANDS

A 6' WIDE RIGHT-OF-WAY 3' ON EACH SIDE OF THE FOLLOWING DESCRIBED CENTERLINE.

BEGINNING AT A POINT ON THE WEST LINE OF THE SW 1/4 NW 1/4 OF SECTION 19, T20S, R38E, N.M.P.M., WHICH BEARS N00°05'52"W 606.77' FROM THE WEST 1/4 CORNER OF SAID SECTION 19, THENCE S89°47'10"E 1333.29' TO A POINT ON THE EAST LINE OF THE SW 1/4 NW 1/4 OF SAID SECTION 19, WHICH BEARS N65°41'27"E 1461.86' FROM THE WEST 1/4 CORNER OF SAID SECTION 19. THE SIDE LINES OF SAID DESCRIBED RIGHT-OF-WAY BEING SHORTENED OR ELONGATED TO MEET THE GRANTOR'S PROPERTY LINES. BASIS OF BEARINGS IS A G.P.S. OBSERVATION. CONTAINS 0.184 ACRES MORE OR LESS.

| RIGHT-OF-WAY LENGTHS | | | |
|----------------------|---------|-------|-------|
| DESCRIPTION | FEET | ACRES | RODS |
| S-W CATTLE COMPANY | 1333.29 | 0.184 | 80.81 |

CERTIFICATE OF PROFESSIONAL SURVEY

THIS IS TO CERTIFY THAT THE ABOVE PLAT WAS PREPARED FROM FIELD NOTES OF ACTUAL SURVEYS MADE BY ME OR UNDER MY SUPERVISION AND THAT THE SAME ARE TRUE AND CORRECT TO THE BEST OF MY KNOWLEDGE AND BELIEF.

Nelson J. Marshall
REGISTERED LAND SURVEYOR
REGISTRATION NO. 12446
STATE OF NEW MEXICO 01-10-14

▲ = SECTION CORNERS LOCATED.

NOTES:

ConocoPhillips

SEMUR 247
SECTION 24, T20S, R37E, N.M.P.M.
LEA, COUNTY, NEW MEXICO

DRAWN BY: S.F.
DATE: 01-07-14

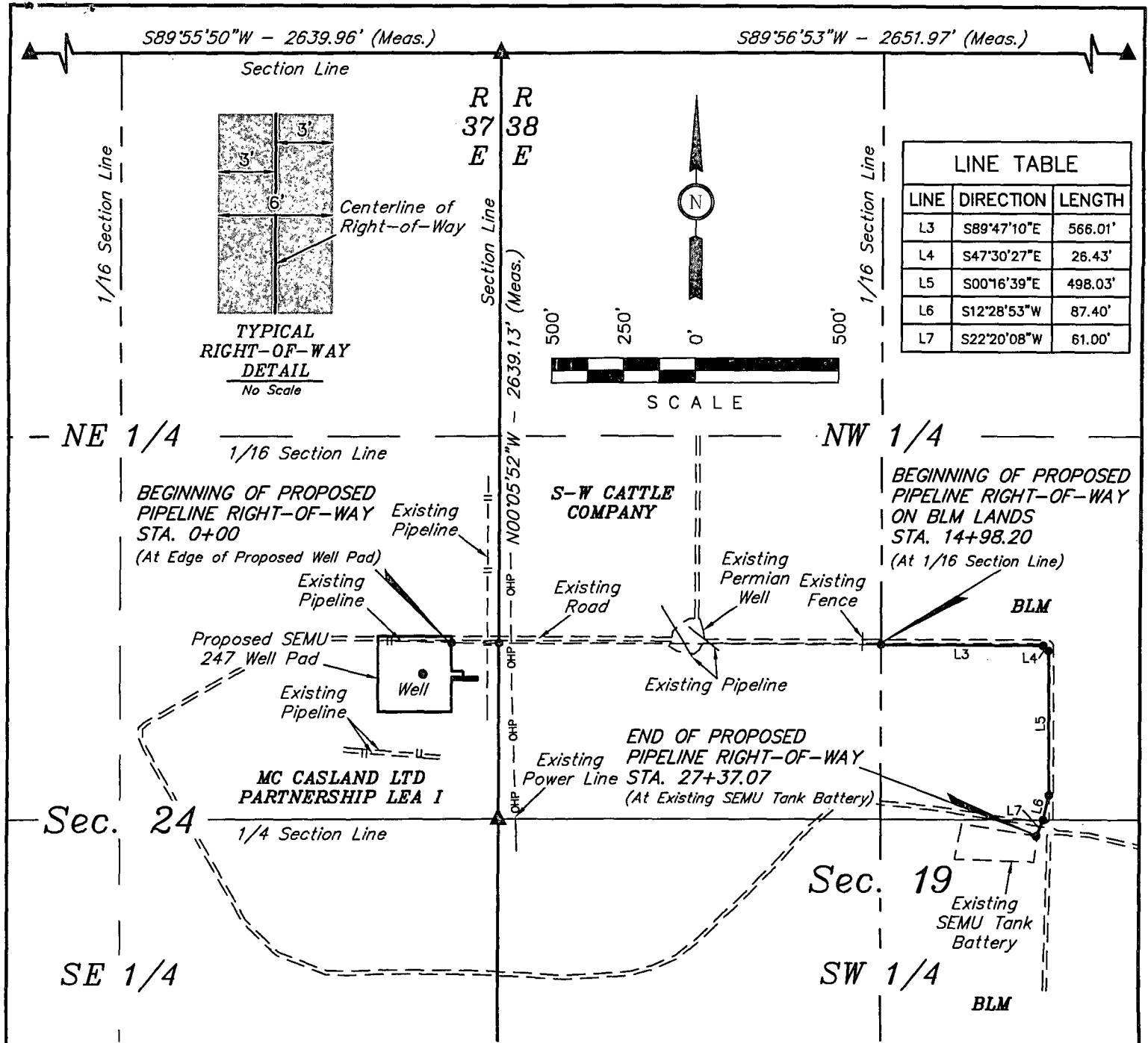
SCALE: 1" = 500'
REVISED:

Corporate Office * 85 South 200 East
Vernal, UT 84078 * (435) 789-1017

PIPELINE R-O-W

FIGURE #6B





PIPELINE RIGHT-OF-WAY DESCRIPTION ON BLM LANDS

A 6' WIDE RIGHT-OF-WAY 3' ON EACH SIDE OF THE FOLLOWING DESCRIBED CENTERLINE.

BEGINNING AT A POINT ON THE WEST LINE OF THE SE 1/4 NW 1/4 OF SECTION 19, T20S, R38E, N.M.P.M., WHICH BEARS N65°41'27"E 1461.86' FROM THE WEST 1/4 CORNER OF SAID SECTION 19, THENCE S89°47'10"E 566.01'; THENCE S47°30'27"E 26.43'; THENCE S00°16'39"E 498.03'; THENCE S12°28'53"W 87.40'; THENCE S22°20'08"W 61.00' TO A POINT IN THE NE 1/4 SW 1/4 OF SAID SECTION 19, WHICH BEARS S88°13'58"E 1878.98' FROM THE WEST 1/4 CORNER OF SAID SECTION 19. THE SIDE LINES OF SAID DESCRIBED RIGHT-OF-WAY BEING SHORTENED OR ELONGATED TO MEET THE GRANTOR'S PROPERTY LINES. BASIS OF BEARINGS IS A G.P.S. OBSERVATION. CONTAINS 0.170 ACRES MORE OR LESS.

BEGINNING OF PIPELINE ON BLM LANDS STA. 14+98.20
BEARS N65°41'27"E 1461.86' FROM THE WEST 1/4
CORNER OF SECTION 19, T20S, R38E, N.M.P.M.

END OF PIPELINE ON BLM LANDS STA. 27+37.07
BEARS S88°13'58"E 1878.98' FROM THE WEST 1/4
CORNER OF SECTION 19, T20S, R38E, N.M.P.M.

RIGHT-OF-WAY LENGTHS

| DESCRIPTION | FEET | ACRES | RODS |
|--------------------|---------|-------|-------|
| BLM NW 1/4 | 1177.57 | 0.162 | 71.37 |
| BLM SW 1/4 | 61.30 | 0.008 | 3.72 |
| TOTAL ON BLM LANDS | 1238.87 | 0.170 | 75.09 |

THIS IS TO CERTIFY THAT THE ABOVE PLAT WAS PREPARED FROM
FIELD NOTES OF ACTUAL SURVEYS MADE BY ME OR UNDER MY
SUPERVISION AND THAT THE SAME ARE TRUE AND CORRECT TO THE
BEST OF MY KNOWLEDGE AND BELIEF.

REGISTERED LAND SURVEYOR
REGISTRATION NO. 12446
STATE OF NEW MEXICO

▲ = SECTION CORNERS LOCATED.

NOTES:

ConocoPhillips

ConocoPhillips Company

SEMU 247
SECTION 24, T20S, R37E, N.M.P.M.
LEA, COUNTY, NEW MEXICO

DRAWN BY: S.F.

SCALE: 1" = 500'

DATE: 01-07-14

REVISED:

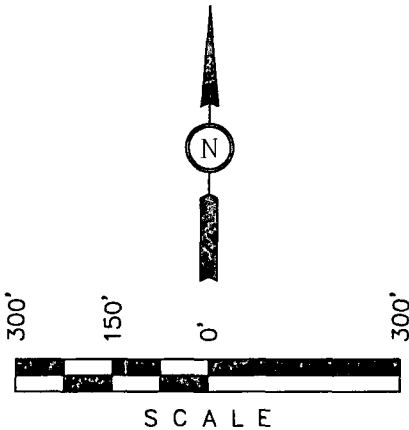
PIPELINE R-O-W

FIGURE #6C

NE 1/4 -

1/16 Section Line

| LINE TABLE | | |
|------------|-------------|---------|
| LINE | DIRECTION | LENGTH |
| L1 | N44°19'48"E | 43.00' |
| L2 | S88°05'45"W | 380.65' |



1/16 Section Line

MC CASLAND LTD
PARTNERSHIP LEA I

END OF PROPOSED POWER
LINE RIGHT-OF-WAY
STA. 0+43.00
(At Edge of Proposed
SEMU 247 Well Pad)

BEGINNING OF PROPOSED
POWER LINE RIGHT-OF-WAY
STA. 0+00
(At Existing Power Line)

END OF PROPOSED POWER LINE
RE-ROUTE RIGHT-OF-WAY
STA. 3+80.65
(At Existing Power Line)

BEGINNING OF PROPOSED
POWER LINE RE-ROUTE
RIGHT-OF-WAY
STA. 0+00
(At Existing Power Line)

Existing
Pipeline

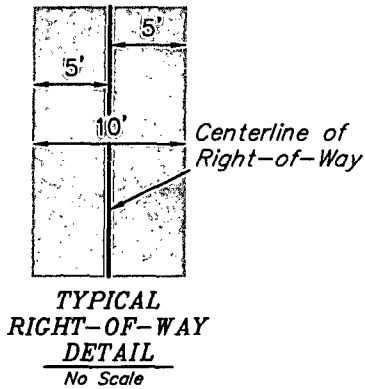
Existing
Power Line
Proposed SEMU
247 Well Pad
Existing Road

Existing
Pipeline
Well

N00°05'52"W - 2639.13' (Meas.)

Sec. 24

1/4 Section Line



SE 1/4

BEGINNING OF POWER LINE STA. 0+00 BEARS
N52°59'57"W 564.52' FROM THE EAST 1/4
CORNER OF SECTION 24, T20S, R37E, N.M.P.M.

END OF POWER LINE STA. 00+43.00 BEARS
N48°38'11"W 560.66' FROM THE EAST 1/4
CORNER OF SECTION 24, T20S, R37E, N.M.P.M.

BEGINNING OF POWER LINE RE-ROUTE STA. 0+00
BEARS N11°17'49"W 359.35' FROM THE EAST 1/4
CORNER OF SECTION 24, T20S, R37E, N.M.P.M.

END OF POWER LINE RE-ROUTE STA. 3+80.65
BEARS N52°59'57"W 564.52' FROM THE EAST 1/4
CORNER OF SECTION 24, T20S, R37E, N.M.P.M.

Existing
Power Line

Section Line
N00°03'03"W
2644.77' (Meas.)

POWER LINE RIGHT-OF-WAY DESCRIPTION

A 10' WIDE RIGHT-OF-WAY 5' ON EACH SIDE OF THE FOLLOWING DESCRIBED CENTERLINE.

BEGINNING AT A POINT IN THE SE 1/4 NE 1/4 OF SECTION 24, T20S, R37E, N.M.P.M., WHICH BEARS N52°59'57"W 564.52' FROM THE EAST 1/4 CORNER OF SAID SECTION 24, THENCE N44°19'48"E 43.00' TO A POINT IN THE SE 1/4 NE 1/4 OF SAID SECTION 24, WHICH BEARS N48°38'11"W 560.66' FROM THE EAST 1/4 CORNER OF SAID SECTION 24. THE SIDE LINES OF SAID DESCRIBED RIGHT-OF-WAY BEING SHORTENED OR ELONGATED TO MEET THE GRANTOR'S PROPERTY LINES. BASIS OF BEARINGS IS A G.P.S. OBSERVATION. CONTAINS 0.010 ACRES MORE OR LESS.

POWER LINE RE-ROUTE RIGHT-OF-WAY DESCRIPTION

A 10' WIDE RIGHT-OF-WAY 5' ON EACH SIDE OF THE FOLLOWING DESCRIBED CENTERLINE.

BEGINNING AT A POINT IN THE SE 1/4 NE 1/4 OF SECTION 24, T20S, R37E, N.M.P.M., WHICH BEARS N11°17'49"W 359.35' FROM THE EAST 1/4 CORNER OF SAID SECTION 24, THENCE S88°05'45"W 380.65' TO A POINT IN THE SE 1/4 NE 1/4 OF SAID SECTION 24, WHICH BEARS N52°59'57"W 564.52' FROM THE EAST 1/4 CORNER OF SAID SECTION 24. THE SIDE LINES OF SAID DESCRIBED RIGHT-OF-WAY BEING SHORTENED OR ELONGATED TO MEET THE GRANTOR'S PROPERTY LINES. BASIS OF BEARINGS IS A G.P.S. OBSERVATION. CONTAINS 0.087 ACRES MORE OR LESS.

RIGHT-OF-WAY LENGTHS

| DESCRIPTION | FEET | ACRES | RODS |
|--|--------|-------|-------|
| MC CASLAND LTD PARTNERSHIP LEA I | 43.00 | 0.010 | 2.61 |
| MC CASLAND LTD PARTNERSHIP LEA I (RE-ROUTE) | 380.65 | 0.087 | 23.07 |

▲ = SECTION CORNERS LOCATED.

CERTIFICATE OF PROFESSIONAL SURVEY

THIS IS TO CERTIFY THAT THE ABOVE WAS PREPARED FROM
FIELD NOTES OF ACTUAL SURVEYS MADE BY ME OR UNDER MY
SUPERVISION AND THAT THE SAME ARE TRUE AND CORRECT TO THE
BEST OF MY KNOWLEDGE AND BELIEF.

REGISTERED LAND SURVEYOR
REGISTRATION NO. 12446
STATE OF NEW MEXICO

01-10-14

NOTES:

ConocoPhillips

ConocoPhillips Company

SEMU 247
SECTION 24, T20S, R37E, N.M.P.M.
LEA, COUNTY, NEW MEXICO

DRAWN BY: S.F.

SCALE: 1" = 300'

DATE: 01-07-14

REVISED:

POWER LINE R-O-W

FIGURE #7

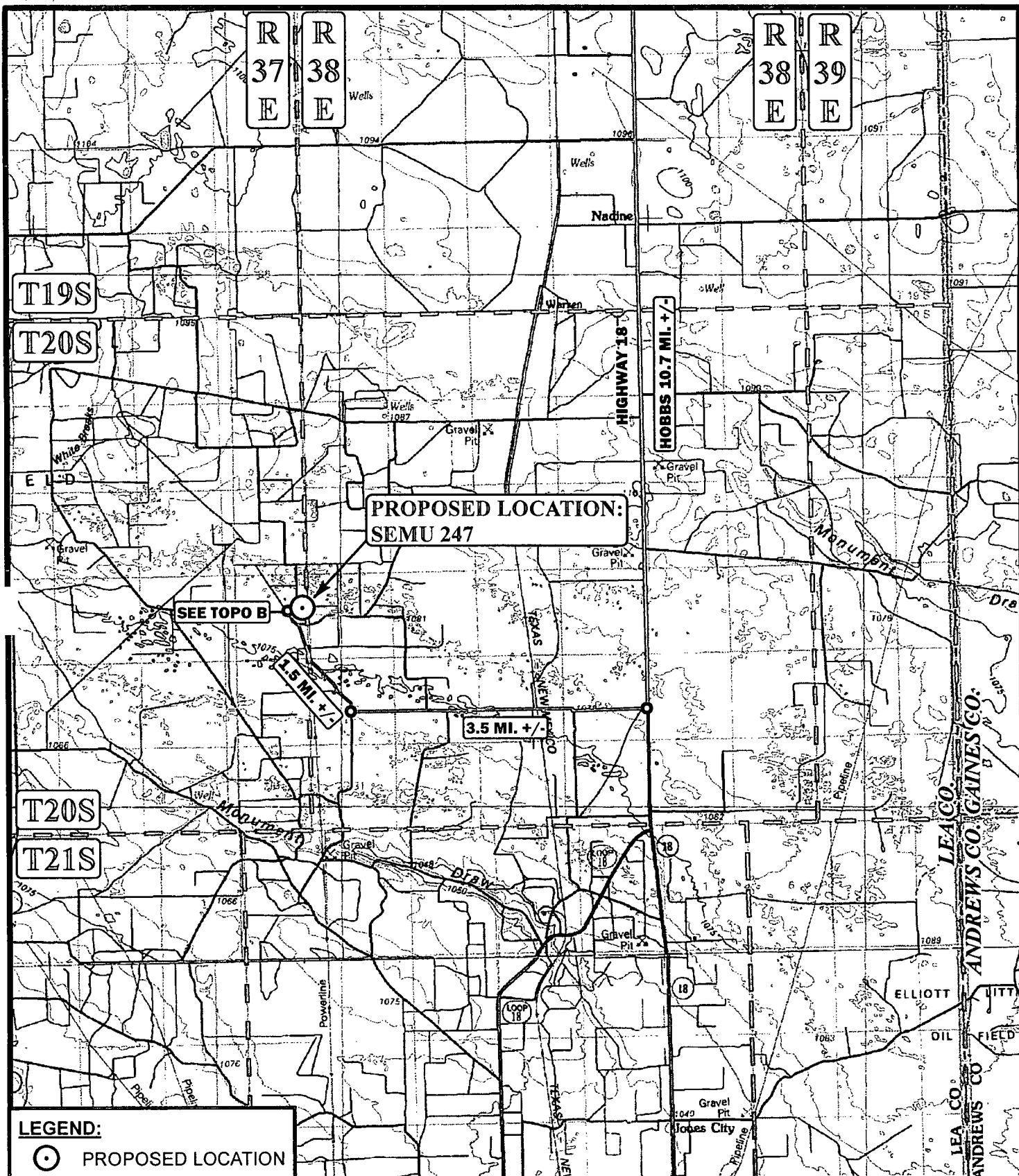
UINTAH
ENGINEERING & LAND SURVEYING

Corporate Office * 85 South 200 East
Vernal, UT 84078 * (435) 789-1017

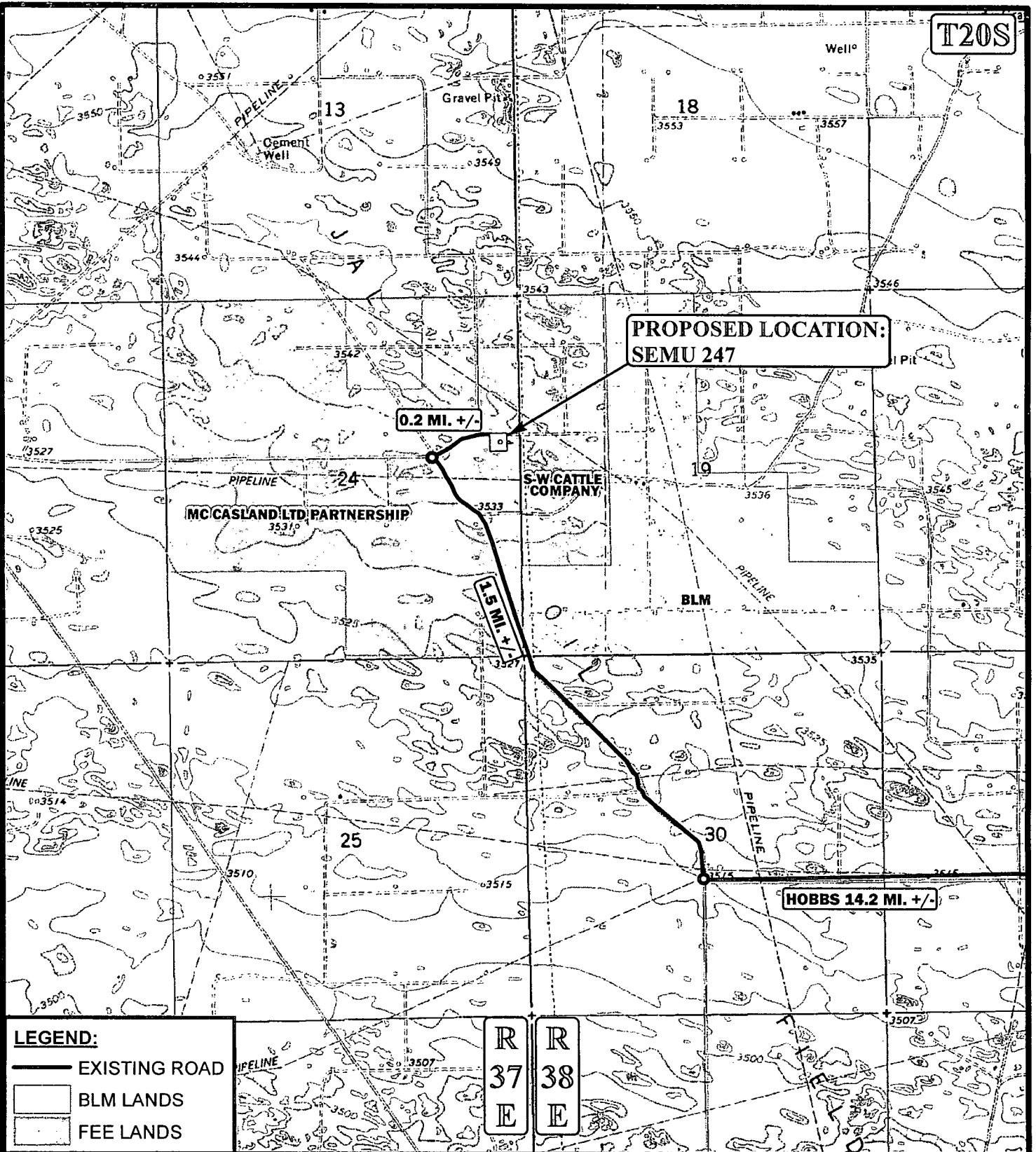
ConocoPhillips Company
SEMU 247
SECTION 24, T20S, R37E, N.M.P.M.

BEGINNING AT THE INTERSECTION OF U.S. HIGHWAY 62/U.S. HIGHWAY 180 AND HIGHWAY 18, PROCEED IN A SOUTHERLY DIRECTION FROM HOBBS, NEW MEXICO ALONG HIGHWAY 18 APPROXIMATELY 10.7 MILES TO THE JUNCTION OF THIS ROAD AND AN EXISTING ROAD TO THE WEST; TURN RIGHT AND PROCEED IN A WESTERLY DIRECTION APPROXIMATELY 3.5 MILES TO THE JUNCTION OF THIS ROAD AND AN EXISTING ROAD TO THE NORTH; TURN RIGHT AND PROCEED IN A NORTHERLY, THEN NORTHWESTERLY DIRECTION APPROXIMATELY 1.5 MILES TO THE JUNCTION OF THIS ROAD AND AN EXISTING ROAD TO THE EAST; TURN RIGHT AND PROCEED IN AN EASTERLY DIRECTION APPROXIMATELY 0.2 MILES TO THE PROPOSED LOCATION.

TOTAL DISTANCE FROM HOBBS, NEW MEXICO TO THE PROPOSED LOCATION IS APPROXIMATELY 15.9 MILES.



T20S



**PROPOSED LOCATION:
SEMU 247**

0.2 MI. +/-

1.5 MI. +/-

HOBBS 14.2 MI. +/-

LEGEND:

- EXISTING ROAD
- BLM LANDS
- FEE LANDS

*PARCEL DATA SHOWN HAS BEEN OBTAINED FROM VARIOUS SOURCES AND SHOULD BE USED FOR MAPPING, GRAPHIC AND PLANNING PURPOSES ONLY. NO WARRANTY IS MADE BY UTAH ENGINEERING & LAND SURVEYING (UELS) FOR ACCURACY OF THE PARCEL DATA.

| | | |
|----------------------|----------|--|
| SCALE: 1" = 2000' | REVISED: | |
| DRAWN BY: L.S. | | |
| DATE DRAWN: 12-19-13 | | |



ConocoPhillips

ConocoPhillips Company

SEMU 247
SECTION 24, T20S, R37E, N.M.P.M.
2139' FNL 265' FEL

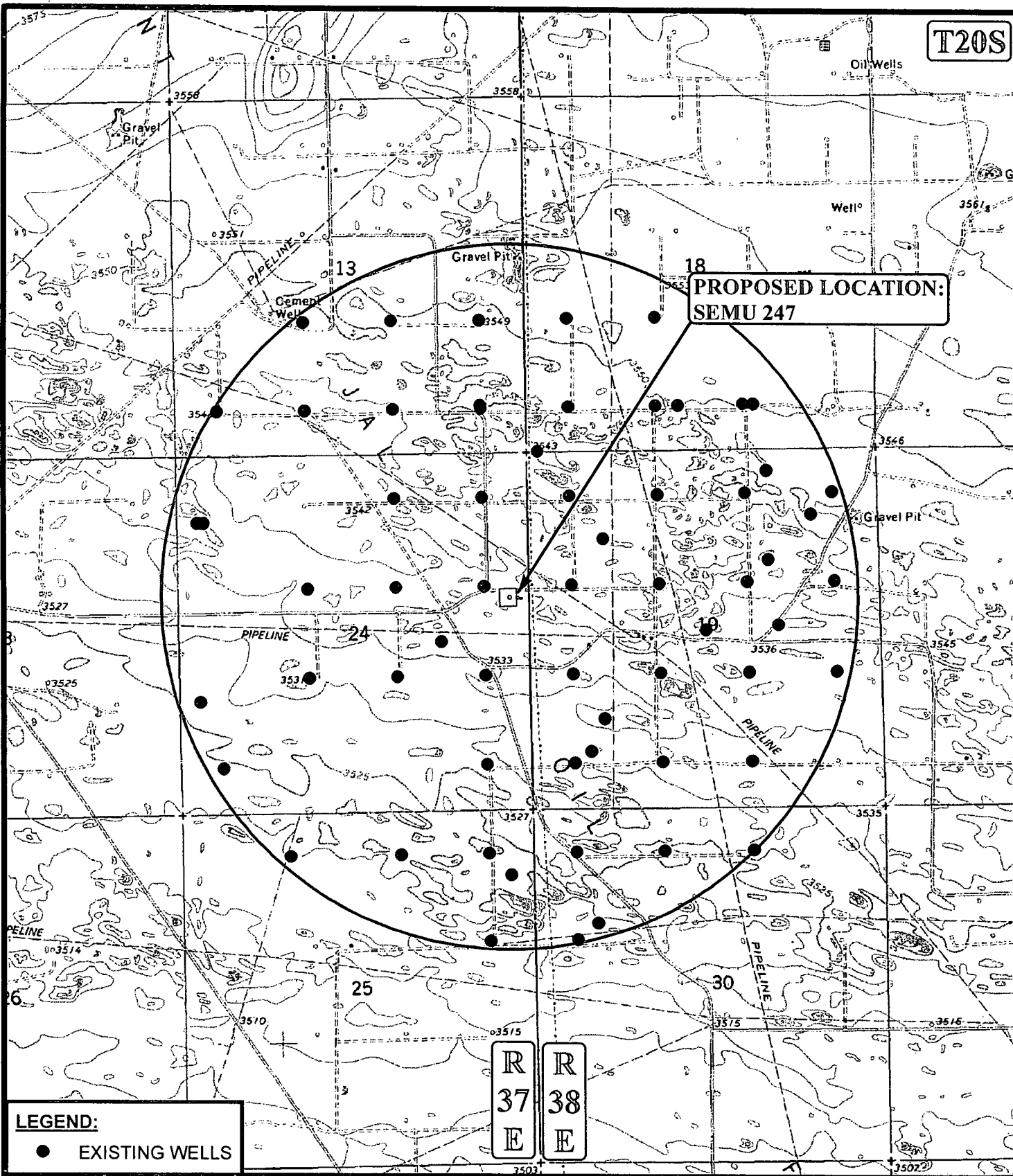
ACCESS ROAD MAP

TOPO B



Corporate Office * 85 South 200 East
Vernal, UT 84078 * (435) 789-1017

T20S



LEGEND:
● EXISTING WELLS

SCALE: 1" = 2000'
DRAWN BY: L.S.
DATE DRAWN: 12-19-13

REVISED:



ConocoPhillips

ConocoPhillips Company

SEMU 247
SECTION 24, T20S, R37E, N.M.P.M.
2139' FNL 265' FEL

TOPOGRAPHIC MAP

TOPO C



Corporate Office * 85 South 200 East
Vernal, UT 84078 * (435) 789-1017

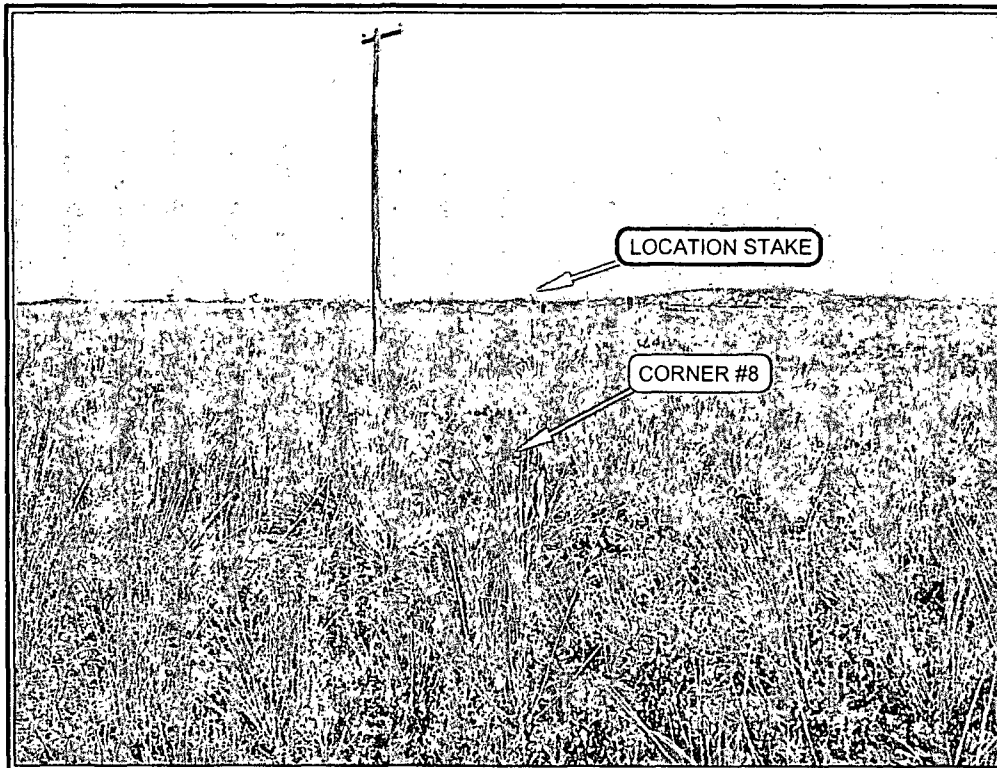


PHOTO: VIEW FROM CORNER #8 TO LOCATION STAKE

CAMERA ANGLE: NORTHEASTERLY

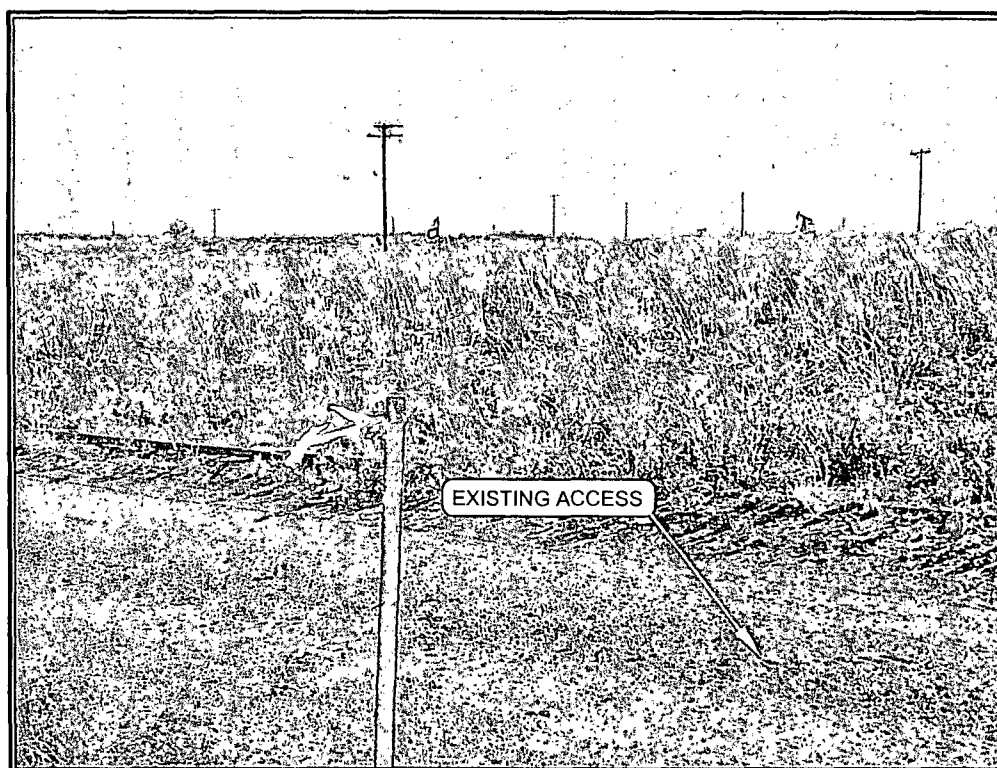


PHOTO: VIEW OF EXISTING ACCESS

CAMERA ANGLE: SOUTHEASTERLY

NOTES:

ConocoPhillips

ConocoPhillips Company

SEMU 247
SECTION 24, T20S, R37E, N.M.P.M.
2139' FNL 265' FEL

TAKEN BY: J.V.

DRAWN BY: L.S.

REVISED: 01-28-14 L.S.

DATE: 12-16-13

DATE: 12-19-13



Corporate Office * 85 South 200 East
Vernal, UT 84078 * (435) 789-1017

PHOTO SHEET