

District I
1625 N. French Dr., Hobbs, NM 88240
Phone: (575) 393-6161 Fax: (575) 393-0720
District II
811 S. First St., Artesia, NM 88210
Phone: (575) 748-1283 Fax: (575) 748-9720
District III
1000 Rio Brazos Road, Aztec, NM 87411
Phone: (505) 334-6175 Fax: (505) 334-6175
District IV
1220 S. St. Francis Dr., Santa Fe, NM 87503
Phone: (505) 476-3460 Fax: (505) 476-3462

State of New Mexico
Energy, Minerals & Natural Resources Department
OIL CONSERVATION DIVISION
1220 South St. Francis Dr.
Santa Fe, NM 87505

HOBBS OCD

Form C-102

Revised August 1, 2011

Submit one copy to appropriate

District Office

AUG 05 2014

☒ AMENDED REPORT

RECEIVED

WELL LOCATION AND ACREAGE DEDICATION PLAT

¹ API Number 30-025-42025	² Pool Code 5150	³ Pool Name BELL LAKE; BONE SPRING, NORTH
⁴ Property Code 3135167	⁵ Property Name STARCASTER 18 FEDERAL Com	⁶ Well Number 4H
⁷ OGRID No. 270329	⁸ Operator Name ENDURANCE RESOURCES, LLC	⁹ Elevation 3478.6

¹⁰ Surface Location

UL or lot no.	Section	Township	Range	Lot Idn	Feet from the	North/South line	Feet from the	East/West line	County
A	18	23 S	34 E		330	NORTH	660	EAST	LEA

¹¹ Bottom Hole Location If Different From Surface

UL or lot no.	Section	Township	Range	Lot Idn	Feet from the	North/South line	Feet from the	East/West line	County
P	18	23 S	34 E		330	SOUTH	660	EAST	LEA

¹² Dedicated Acres 320.160	¹³ Joint or Infill	¹⁴ Consolidation Code	¹⁵ Order No.
---	-------------------------------	----------------------------------	-------------------------

No allowable will be assigned to this completion until all interests have been consolidated or a non-standard unit has been approved by the division.

<p>N89°33'21"E 2552.06 FT</p> <p>NW CORNER SEC. 18 LAT. = 32.3118793°N LONG. = 103.5175130°W NMSP EAST (FT) N = 478153.24 E = 793375.98</p>		<p>N89°34'54"E 2649.38 FT</p> <p>N Q CORNER SEC. 18 LAT. = 32.3118800°N LONG. = 103.5092542°W NMSP EAST (FT) N = 478172.02 E = 795927.49</p>		<p>ME CORNER SEC. 18 LAT. = 32.3118769°N LONG. = 103.5006806°W NMSP EAST (FT) N = 478192.36 E = 794576.30</p>	
<p>NO 26°30'W 2639.96 FT</p> <p>LOT 2</p>		<p>STARCASTER "18" FEDERAL #4H ELEV. = 3478.6 LAT. = 32.3109707°N (NAD83) LONG. = 103.5028146°W NMSP EAST (FT) N = 477857.56 E = 797919.57</p>		<p>NO 32°07'E 2642.32 FT</p> <p>LOT 1</p>	
<p>W Q CORNER SEC. 18 LAT. = 32.3046243°N LONG. = 103.5175146°W NMSP EAST (FT) N = 475513.85 E = 793395.55</p>		<p>NOTE: LATITUDE AND LONGITUDE COORDINATES ARE SHOWN USING THE NORTH AMERICAN DATUM OF 1983 (NAD83). LISTED NEW MEXICO STATE PLANE EAST COORDINATES ARE GRID (NAD83). BASIS OF BEARING AND DISTANCES USED ARE NEW MEXICO STATE PLANE EAST COORDINATES MODIFIED TO THE SURFACE.</p>		<p>E Q CORNER SEC. 18 LAT. = 32.3048154°N LONG. = 103.5006671°W NMSP EAST (FT) N = 475550.64 E = 798600.99</p>	
<p>NO 26°13'W 2638.04 FT</p> <p>LOT 4</p>		<p>BOTTOM OF HOLE LAT. = 32.2982717°N LONG. = 103.5027878°W NMSP EAST (FT) N = 473237.70 E = 797963.64</p>		<p>NO 33°33'E 2638.33 FT</p> <p>LOT 3</p>	
<p>SW CORNER SEC. 18 LAT. = 32.2973745°N LONG. = 103.5175145°W NMSP EAST (FT) N = 472878.37 E = 793415.66</p>		<p>SE CORNER SEC. 18 LAT. = 32.2973633°N LONG. = 103.5006501°W NMSP EAST (FT) N = 472912.33 E = 799526.73</p>		<p>NO 33°33'E 2638.33 FT</p> <p>LOT 5</p>	
<p>S89°36'17"W 2606.08 FT</p>		<p>S89°36'17"W 2606.08 FT</p>		<p>S89°36'17"W 2606.08 FT</p>	

" OPERATOR CERTIFICATION

I hereby certify that the information contained herein is true and complete to the best of my knowledge and belief, and that this organization either owns a working interest or unleased mineral interest in the land including the proposed bottom hole location or has a right to drill this well at this location pursuant to a contract with an owner of such a mineral or working interest, or to a voluntary pooling agreement or a compulsory pooling order heretofore entered by the division.

Signature: *M. A. Sirgo, III* Date: **02-12-14**

Printed Name: **M. A. Sirgo, III**

E-mail Address: **manny@enduranceresourcesllc.com**

" SURVEYOR CERTIFICATION

I hereby certify that the well location shown on this plat was plotted from field notes of actual surveys made by me or under my supervision, and that the same is true and correct to the best of my belief.

NOVEMBER 19, 2013

Date of Survey: **12797**

Signature and Seal of Professional Surveyor: *[Signature]*

Certificate Number: **PLS 12797** (MILLO, PLS 12797)

SURVEY NO. 3444

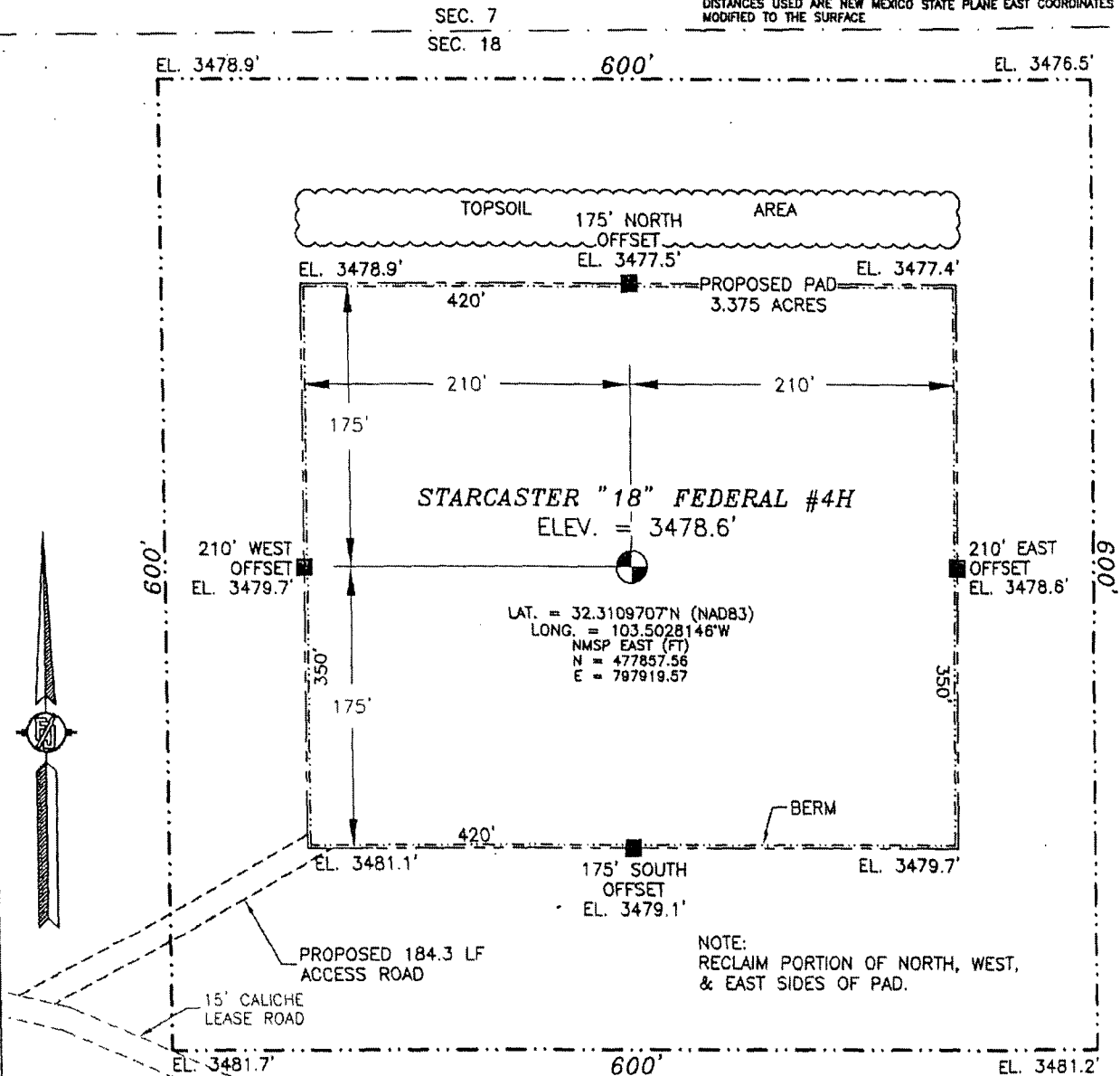
AUG 07 2014

P.M.

SECTION 18, TOWNSHIP 23 SOUTH, RANGE 34 EAST, N.M.P.M.
LEA COUNTY, STATE OF NEW MEXICO

SITE MAP

NOTE: LATITUDE AND LONGITUDE COORDINATES ARE SHOWN USING THE NORTH AMERICAN DATUM OF 1983 (NAD83). LISTED NEW MEXICO STATE PLANE EAST COORDINATES ARE GRID (NAD83). BASIS OF BEARING AND DISTANCES USED ARE NEW MEXICO STATE PLANE EAST COORDINATES MODIFIED TO THE SURFACE



NOTE:
RECLAIM PORTION OF NORTH, WEST,
& EAST SIDES OF PAD.

010 50 100 200

SCALE 1" = 100'

DIRECTIONS TO LOCATION

FROM THE INTERSECTION OF CR 21 (DELAWARE BASIN) AND CR 21-B (SHELL) GO NORTH ON CR 21 FOR APPROX. 4.0 MILES. GO SOUTHEAST ON CALICHE LEASE ROAD (NORTH OF CATTLE GUARD) FOR APPROX. 0.5 OF A MILE. LOCATION IS APPROX. 440' NORTH.

ENDURANCE RESOURCES, LLC
STARCASTER "18" FEDERAL #4H
LOCATED 330 FT. FROM THE NORTH LINE
AND 660 FT. FROM THE EAST LINE OF
SECTION 18, TOWNSHIP 23 SOUTH,
RANGE 34 EAST, N.M.P.M.
LEA COUNTY, STATE OF NEW MEXICO

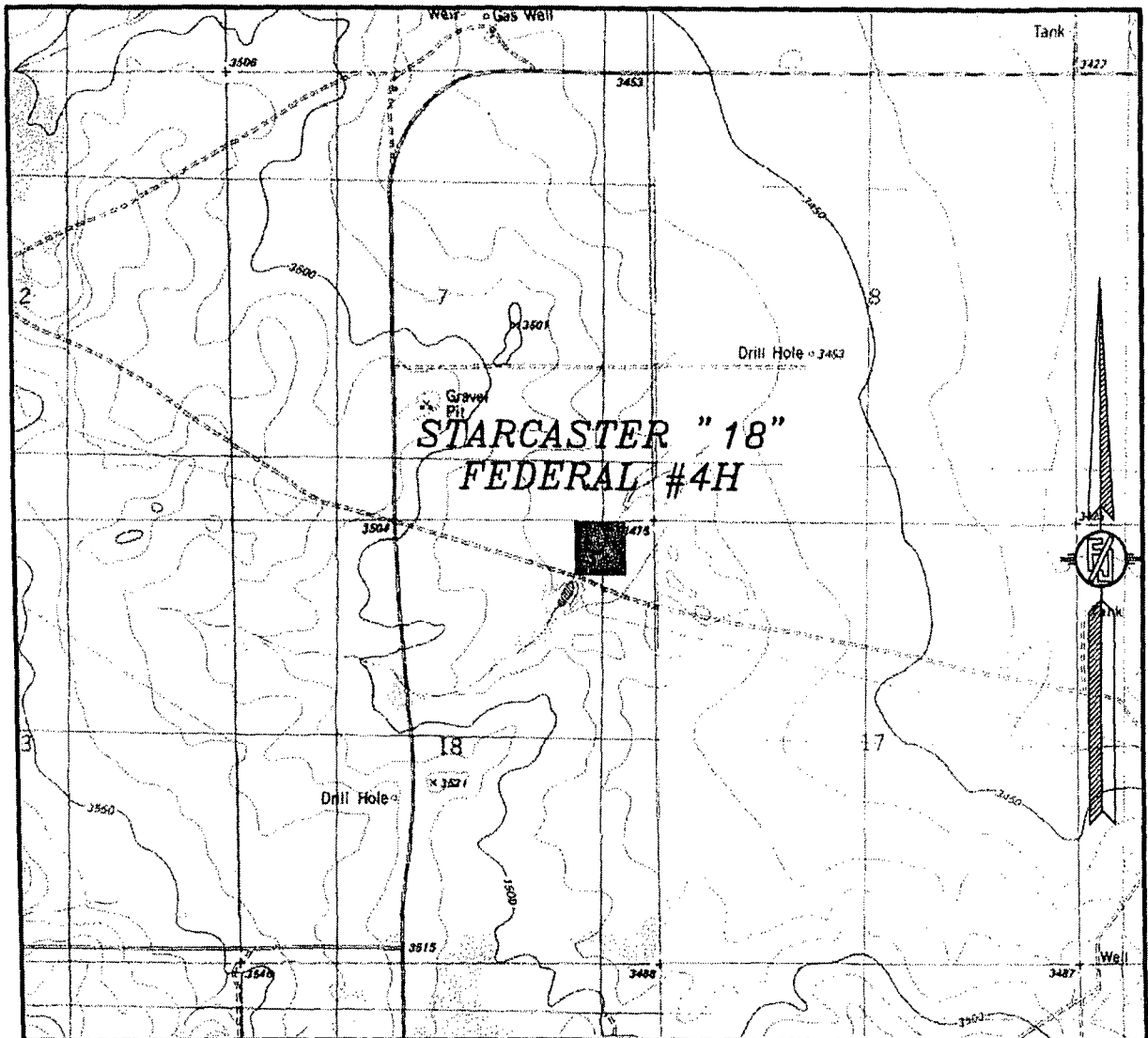
NOVEMBER 19, 2013

SURVEY NO. 2444

MADRON SURVEYING, INC. 301 SOUTH CANAL (575) 234-3341

CARLSBAD, NEW MEXICO

SECTION 18, TOWNSHIP 23 SOUTH, RANGE 34 EAST, N.M.P.M.
LEA COUNTY, STATE OF NEW MEXICO
LOCATION VERIFICATION MAP



USGS QUAD MAP:
TIP TOP WELLS

NOT TO SCALE

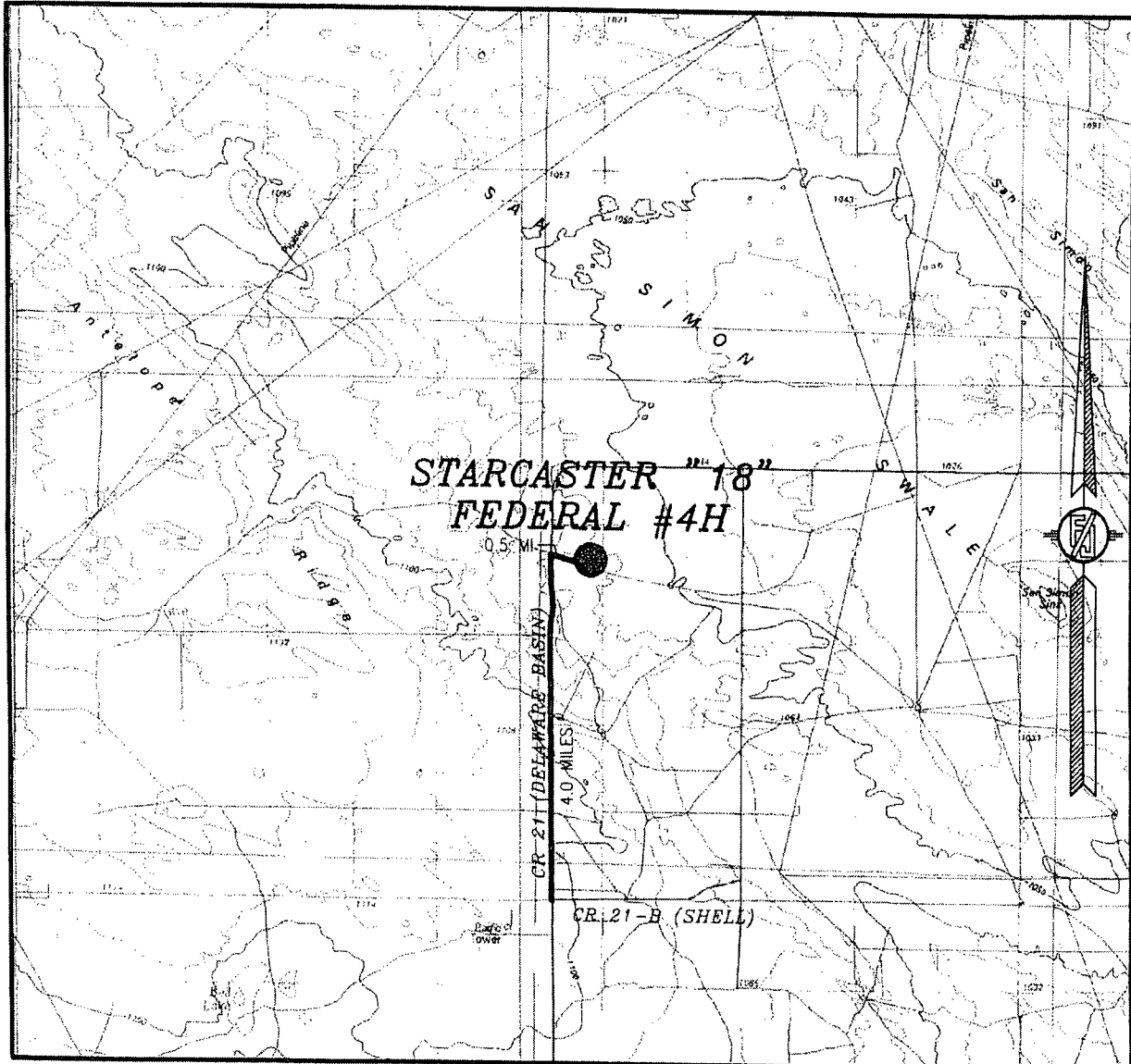
ENDURANCE RESOURCES, LLC
STARCASTER "18" FEDERAL #4H
LOCATED 330 FT. FROM THE NORTH LINE
AND 660 FT. FROM THE EAST LINE OF
SECTION 18, TOWNSHIP 23 SOUTH,
RANGE 34 EAST, N.M.P.M.
LEA COUNTY, STATE OF NEW MEXICO

NOVEMBER 19, 2013

SURVEY NO. 2444

MADRON SURVEYING, INC. 301 SOUTH CANAL (575) 234-3341 CARLSBAD, NEW MEXICO

SECTION 18, TOWNSHIP 23 SOUTH, RANGE 34 EAST, N.M.P.M.
LEA COUNTY, STATE OF NEW MEXICO
VICINITY MAP



NOT TO SCALE

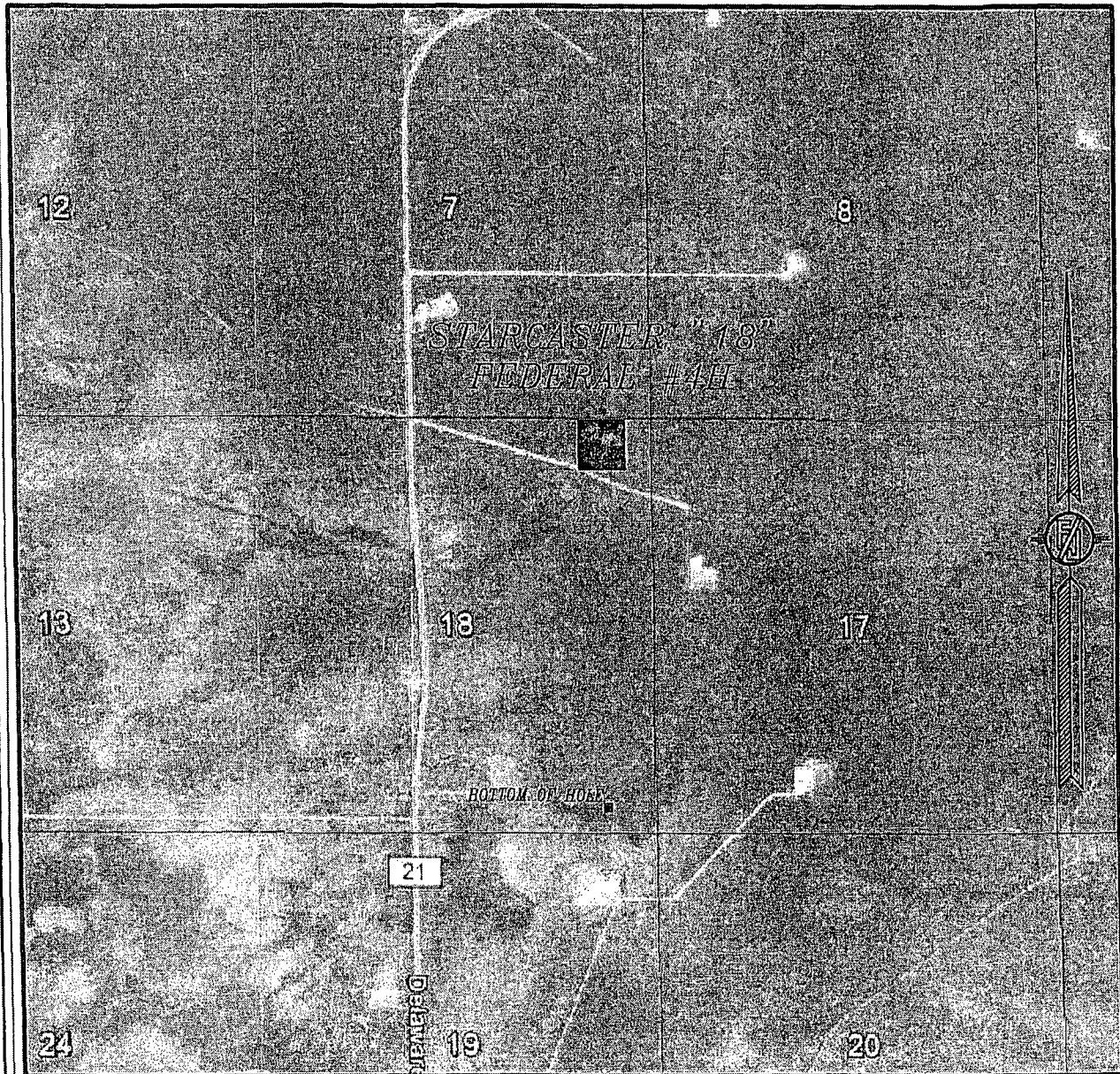
ENDURANCE RESOURCES, LLC
STARCASTER "18" FEDERAL #4H
LOCATED 330 FT. FROM THE NORTH LINE
AND 660 FT. FROM THE EAST LINE OF
SECTION 18, TOWNSHIP 23 SOUTH,
RANGE 34 EAST, N.M.P.M.
LEA COUNTY, STATE OF NEW MEXICO

DIRECTIONS TO LOCATION
FROM THE INTERSECTION OF CR 21 (DELAWARE BASIN) AND CR
21-B (SHELL) GO NORTH ON CR 21 FOR APPROX. 4.0 MILES. GO
SOUTHEAST ON CALICHE LEASE ROAD (NORTH OF CATTLE GUARD)
FOR APPROX. 0.5 OF A MILE. LOCATION IS APPROX. 440' NORTH.

NOVEMBER 19, 2013

MADRON SURVEYING, INC. 301 SOUTH CANAL (575) 234-3341 CARLSBAD, NEW MEXICO SURVEY NO. 2444

SECTION 18, TOWNSHIP 23 SOUTH, RANGE 34 EAST, N.M.P.M.
LEA COUNTY, STATE OF NEW MEXICO
AERIAL PHOTO



NOT TO SCALE
AERIAL PHOTO:
GOOGLE EARTH
MARCH 2012

ENDURANCE RESOURCES, LLC
STARCASTER "18" FEDERAL #4H
LOCATED 330 FT. FROM THE NORTH LINE
AND 660 FT. FROM THE EAST LINE OF
SECTION 18, TOWNSHIP 23 SOUTH,
RANGE 34 EAST, N.M.P.M.
LEA COUNTY, STATE OF NEW MEXICO

NOVEMBER 19, 2013

SURVEY NO. 2444

MADRON SURVEYING, INC. 301 SOUTH CANAL (575) 234-3341 CARLSBAD, NEW MEXICO

Starcaster 18 4H

