

District I
1625 N. French Dr., Hobbs, NM 88240
Phone: (575) 393-6161 Fax: (575) 393-0726
District II
311 S. First St., Artesia, NM 88210
Phone: (575) 748-1283 Fax: (575) 748-0726
District III
1000 Rio Brazos Road, Aztec, NM 87410
Phone: (505) 334-6178 Fax: (505) 334-6170
District IV
1220 S. St. Francis Dr., Santa Fe, NM 87505
Phone: (505) 476-3460 Fax: (505) 476-3462

State of New Mexico
Energy, Minerals & Natural Resources Department
OIL CONSERVATION DIVISION
1220 South St. Francis Dr.
Santa Fe, NM 87505

HOBBS OCD

AUG 08 2014

RECEIVED

Form C-102
Revised August 1, 2011
Submit one copy to appropriate
District Office

☐ AMENDED REPORT

WELL LOCATION AND ACREAGE DEDICATION PLAT

¹ API Number 30-023		² Pool Code 65350		³ Pool Name Young; Bone Spring, North	
⁴ Property Code 313576		⁵ Property Name RINGTAIL FEDERAL			⁶ Well Number 1
⁷ OGRID No. 13837		⁸ Operator Name MACK ENERGY CORPORATION			⁹ Elevation 3909.3

" Surface Location

TL or lot no.	Section	Township	Range	Lot Idn	Feet from the	North/South line	Feet from the	East/West line	County
F	I	18 S	32 E		2310	NORTH	1650	WEST	LEA

" Bottom Hole Location If Different From Surface

TL or lot no.	Section	Township	Range	Lot Idn	Feet from the	North/South line	Feet from the	East/West line	County

¹² Dedicated Acres 40	¹³ Joint or Infill	¹⁴ Consolidation Code	¹⁵ Order No.
--	-------------------------------	----------------------------------	-------------------------

No allowable will be assigned to this completion until all interests have been consolidated or a non-standard unit has been approved by the division.

<p>N89°45'44"E 2640.32 FT</p> <p>NW CORNER SEC. 1 LAT. = 32.7837746°N LONG. = 103.7284571°W NMSP EAST (FT) N = 649400.73 E = 727230.82</p> <p>NE CORNER SEC. 1 LAT. = 32.7837507°N LONG. = 103.7112791°W NMSP EAST (FT) N = 649422.65 E = 732510.18</p> <p>500'21.49'E 2642.04 FT</p>		<p>N89°45'44"E 2640.32 FT</p> <p>DNF</p> <p>NE CORNER SEC. 1 LAT. = 32.7837507°N LONG. = 103.7112791°W NMSP EAST (FT) N = 649422.65 E = 732510.18</p> <p>500'21.49'E 2642.04 FT</p>	
<p>500'21.49'E 2642.04 FT</p> <p>2644.58 FT</p> <p>1650'</p> <p>SURFACE LOCATION</p> <p>RINGTAIL FEDERAL #1 ELEV. = 3909.3' LAT. = 32.7774195°N (NAD83) LONG. = 103.7230768°W NMSP EAST (FT) N = 647098.12 E = 728897.69</p>		<p>500'21.49'E 2642.04 FT</p> <p>2641.80 FT</p>	
<p>W/4 CORNER SEC. 1 LAT. = 32.7765075°N LONG. = 103.7284424°W NMSP EAST (FT) N = 646756.95 E = 727250.45</p> <p>500'29.51'W 2640.00 FT</p>		<p>E/4 CORNER SEC. 1 LAT. = 32.7764906°N LONG. = 103.7112751°W NMSP EAST (FT) N = 646781.26 E = 732526.94</p>	
<p>NOTE: LATITUDE AND LONGITUDE COORDINATES ARE SHOWN USING THE NORTH AMERICAN DATUM OF 1983 (NAD83). LISTED NEW MEXICO STATE PLANE EAST COORDINATES ARE GRID (NAD83). BASIS OF BEARING AND DISTANCES USED ARE NEW MEXICO STATE PLANE EAST COORDINATES MODIFIED TO THE SURFACE.</p>			
<p>SW CORNER SEC. 1 LAT. = 32.7692531°N LONG. = 103.7284169°W NMSP EAST (FT) N = 644117.57 E = 727273.37</p> <p>500'29.51'W 2640.00 FT</p>		<p>SE CORNER SEC. 1 LAT. = 32.7692312°N LONG. = 103.7112722°W NMSP EAST (FT) N = 644140.15 E = 732543.33</p>	
<p>S89°45'11"W 2635.54 FT</p>		<p>S89°45'21"W 2635.71 FT</p>	

" OPERATOR CERTIFICATION
I hereby certify that the information contained herein is true and complete to the best of my knowledge and belief, and that this organization either owns a working interest or mineral interest in the land including the proposed bottom hole location or has a right to drill this well at this location pursuant to a contract with an owner of such a mineral or working interest, or to a voluntary pooling agreement or a compulsory pooling order heretofore entered by the division.

Jerry W. Sherrell 5-2-2014
Signature Date

Jerry W. Sherrell
Printed Name

jerry45@mec.com
E-mail Address

"SURVEYOR CERTIFICATION
I hereby certify that the well location shown on this plat was plotted from field notes of actual surveys made by me or under my supervision, and that the same is true and correct to the best of my belief.

APRIL 28, 2014
Date of Survey

[Signature]
Signature and Seal of Registered Surveyor

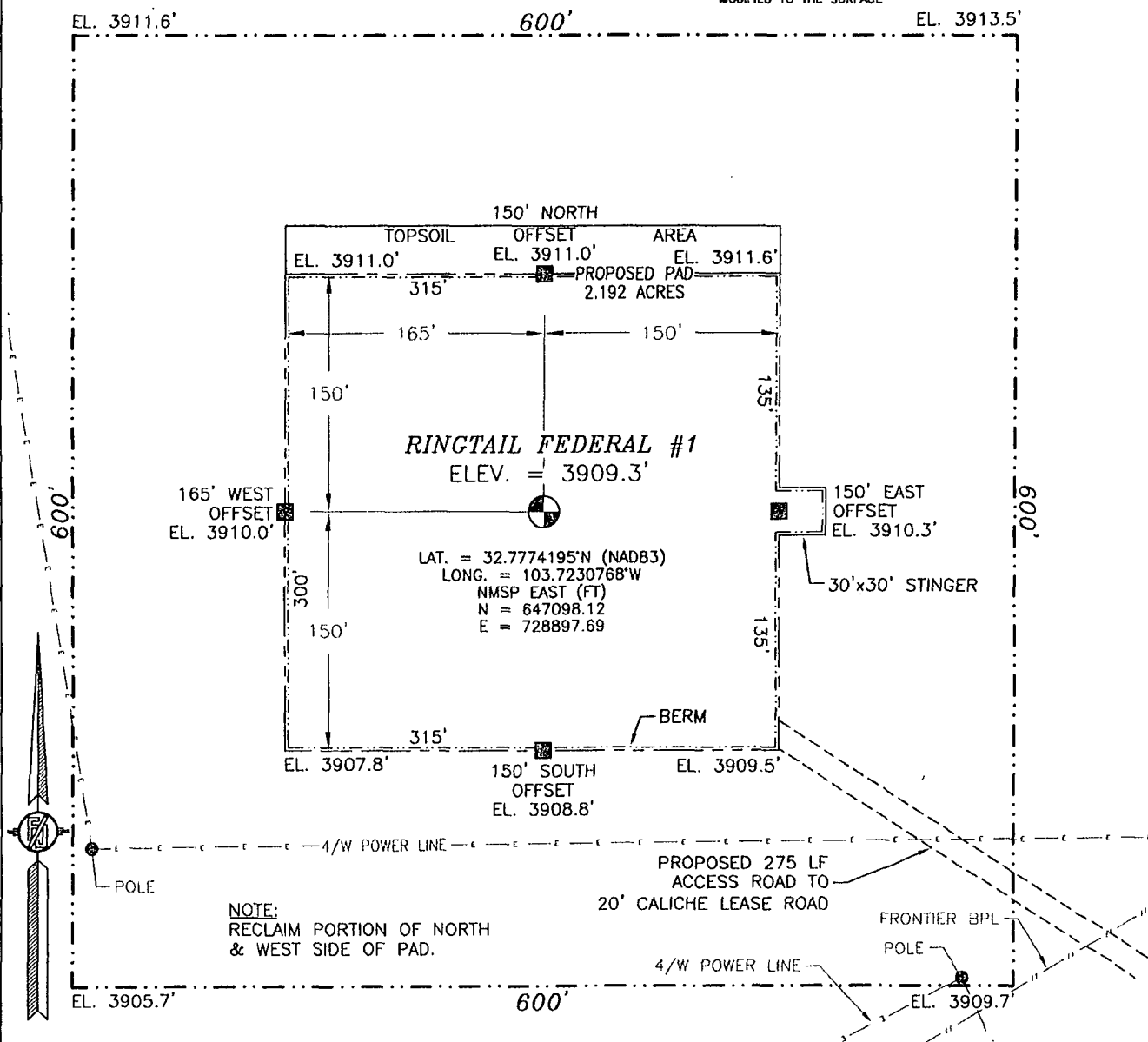
Certificate Number: FILMON L. JAR VILLIO, PLS 12797
SURVEY NO. 2672

AUG 08 2014

SECTION 1, TOWNSHIP 18 SOUTH, RANGE 32 EAST, N.M.P.M.
LEA COUNTY, STATE OF NEW MEXICO

SITE MAP

NOTE: LATITUDE AND LONGITUDE COORDINATES ARE SHOWN USING THE NORTH AMERICAN DATUM OF 1983 (NAD83). LISTED NEW MEXICO STATE PLANE EAST COORDINATES ARE GRID (NAD83). BASIS OF BEARING AND DISTANCES USED ARE NEW MEXICO STATE PLANE EAST COORDINATES MODIFIED TO THE SURFACE



010 50 100 200

SCALE 1" = 100'

DIRECTIONS TO LOCATION

FROM THE INTERSECTION OF STATE HIGHWAY 529 AND DOG LAKE GO WEST ON STATE HIGHWAY 529 FOR APPROX. 0.75 OF A MILE. GO SOUTHWEST ON CALICHE LEASE ROAD (MILE POST 11) FOR APPROX. 1.8 MILES. LOCATION IS APPROX. 430' NORTHWEST.

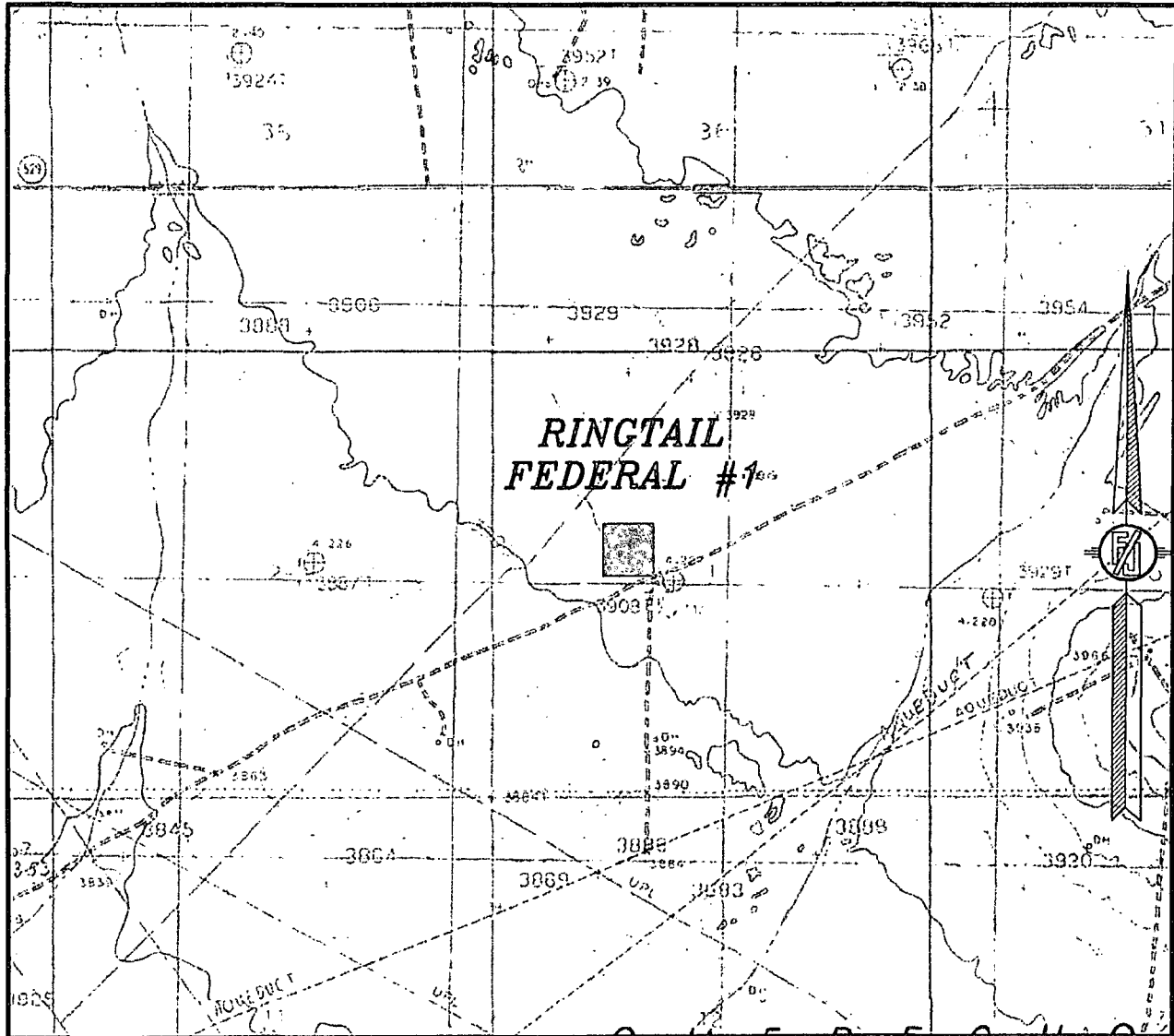
MACK ENERGY CORPORATION
RINGTAIL FEDERAL #1
LOCATED 2310 FT. FROM THE NORTH LINE
AND 1650 FT. FROM THE WEST LINE OF
SECTION 1, TOWNSHIP 18 SOUTH,
RANGE 32 EAST, N.M.P.M.
LEA COUNTY, STATE OF NEW MEXICO

APRIL 28, 2014

SURVEY NO. 2672

MADRON SURVEYING, INC. 301 SOUTH CANAL (575) 234-3341 CARLSBAD, NEW MEXICO

SECTION 1, TOWNSHIP 18 SOUTH, RANGE 32 EAST, N.M.P.M.
LEA COUNTY, STATE OF NEW MEXICO
LOCATION VERIFICATION MAP



USGS QUAD MAP:
DOG LAKE

NOT TO SCALE

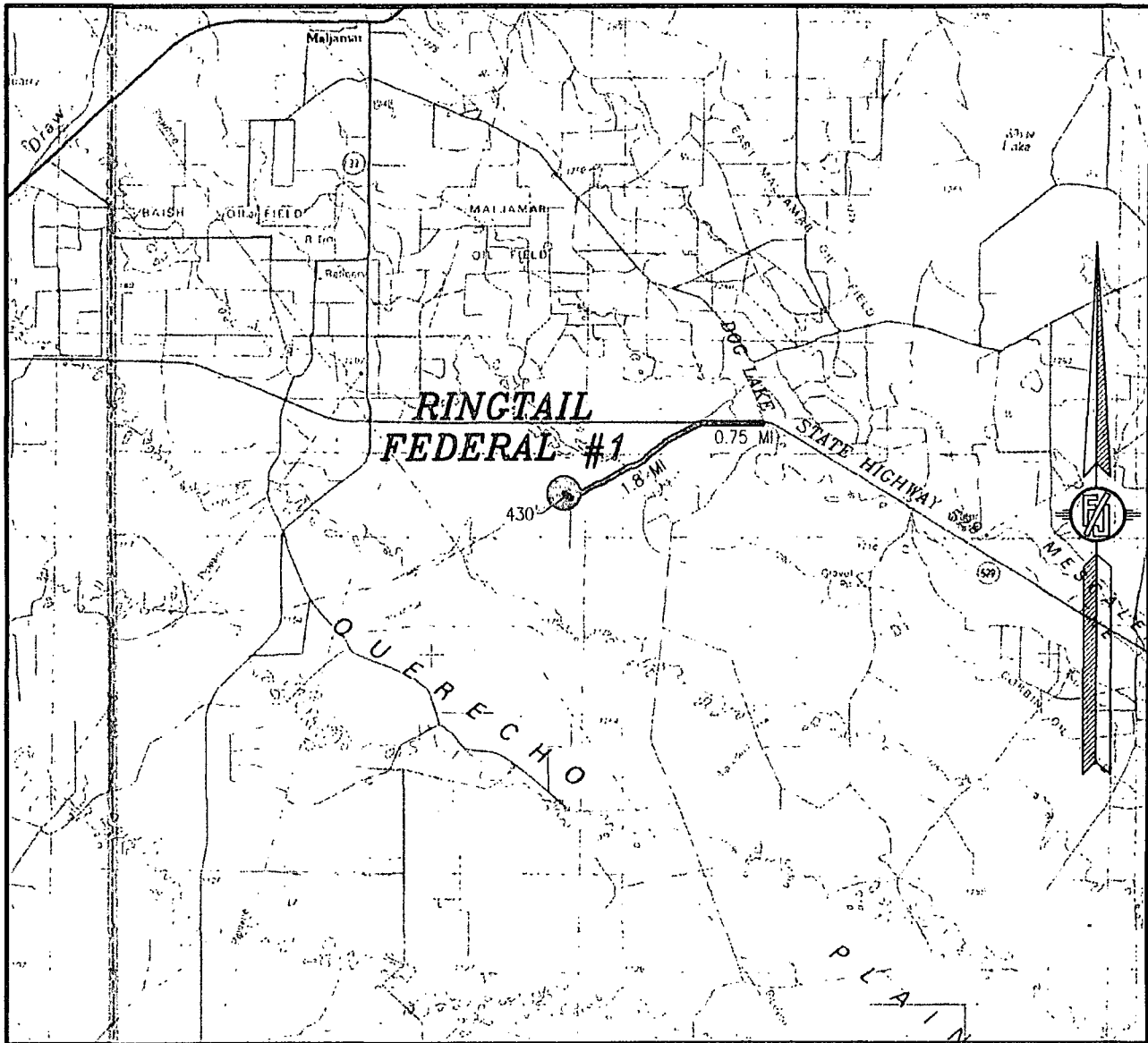
MACK ENERGY CORPORATION
RINGTAIL FEDERAL #1
LOCATED 2310 FT. FROM THE NORTH LINE
AND 1650 FT. FROM THE WEST LINE OF
SECTION 1, TOWNSHIP 18 SOUTH,
RANGE 32 EAST, N.M.P.M.
LEA COUNTY, STATE OF NEW MEXICO

APRIL 28, 2014

SURVEY NO. 2672

MADRON SURVEYING, INC. 301 SOUTH CANAL CARLSBAD, NEW MEXICO
(575) 234-3341

SECTION 1, TOWNSHIP 18 SOUTH, RANGE 32 EAST, N.M.P.M.
LEA COUNTY, STATE OF NEW MEXICO
VICINITY MAP



DISTANCES IN MILES

NOT TO SCALE

DIRECTIONS TO LOCATION

FROM THE INTERSECTION OF STATE HIGHWAY 529 AND DOG LAKE GO WEST ON STATE HIGHWAY 529 FOR APPROX. 0.75 OF A MILE. GO SOUTHWEST ON CALICHE LEASE ROAD (MILE POST 11) FOR APPROX. 1.8 MILES. LOCATION IS APPROX. 430' NORTHWEST.

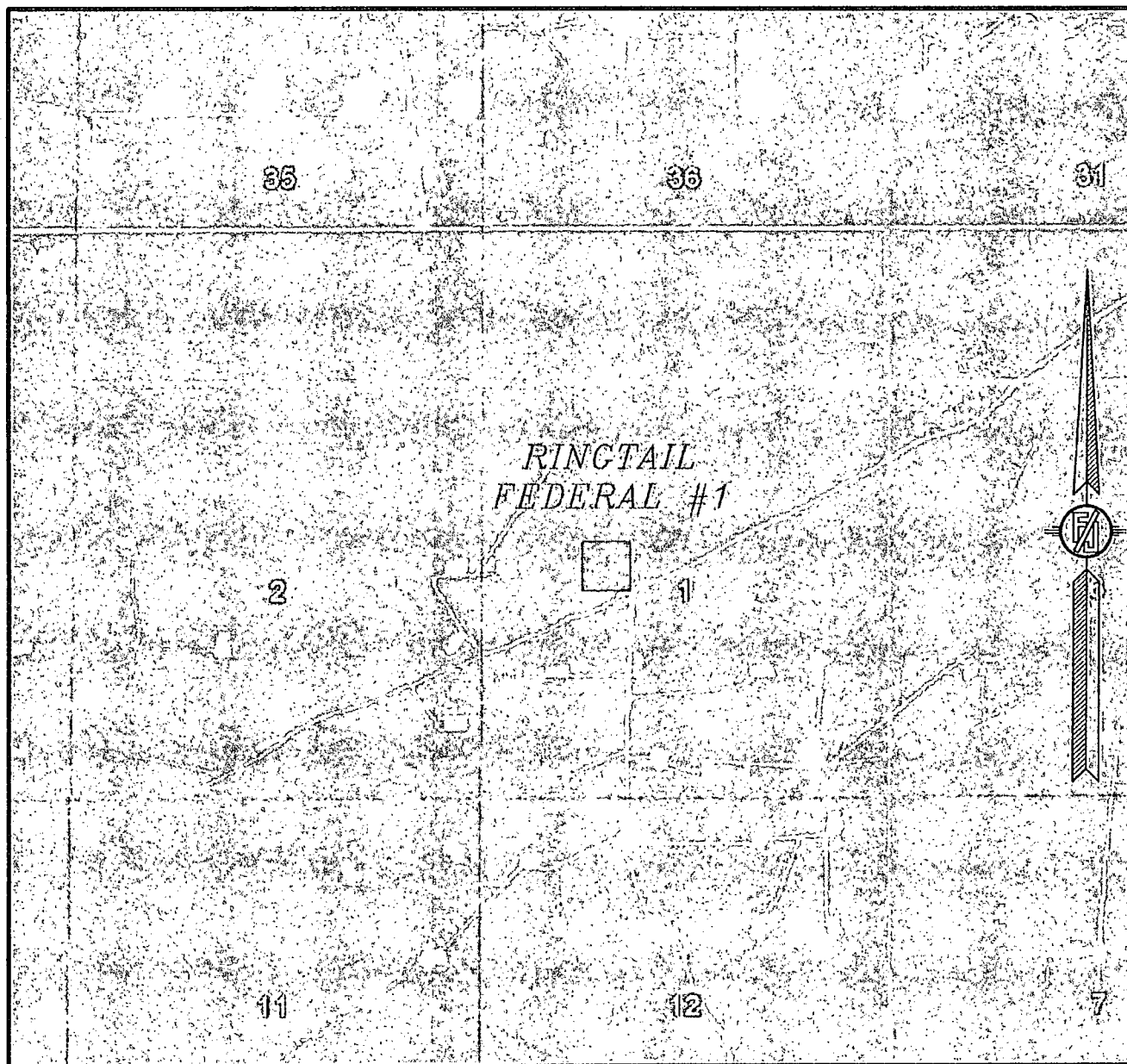
MACK ENERGY CORPORATION
RINGTAIL FEDERAL #1
LOCATED 2310 FT. FROM THE NORTH LINE
AND 1650 FT. FROM THE WEST LINE OF
SECTION 1, TOWNSHIP 18 SOUTH,
RANGE 32 EAST, N.M.P.M.
LEA COUNTY, STATE OF NEW MEXICO

APRIL 28, 2014

SURVEY NO. 2672

MADRON SURVEYING, INC. 301 SOUTH CANAL (575) 234-3341 CARLSBAD, NEW MEXICO

SECTION 1, TOWNSHIP 18 SOUTH, RANGE 32 EAST, N.M.P.M.
LEA COUNTY, STATE OF NEW MEXICO
AERIAL PHOTO



NOT TO SCALE
AERIAL PHOTO:
GOOGLE EARTH
FEBRUARY 2014

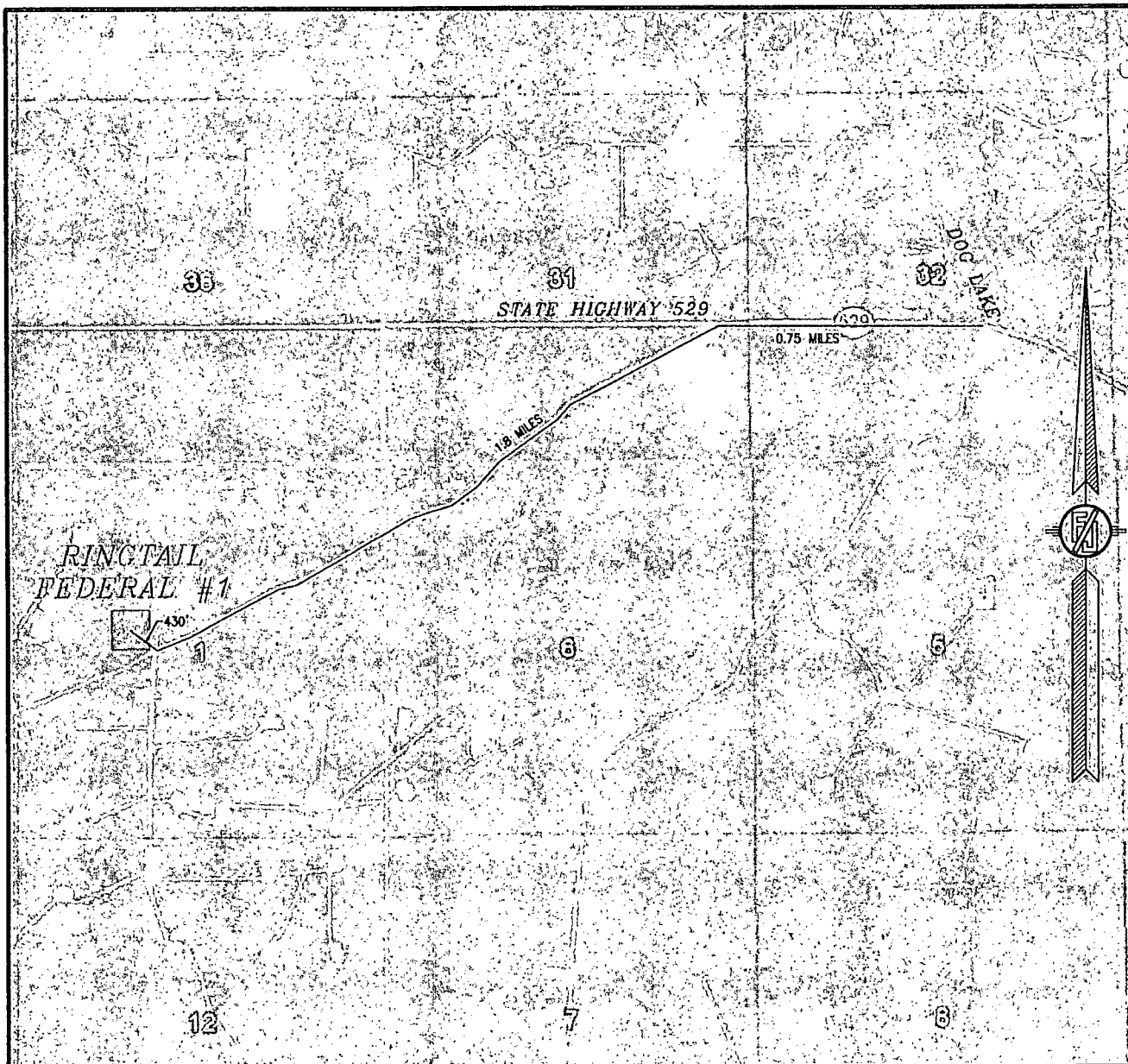
MACK ENERGY CORPORATION
RINGTAIL FEDERAL #1
LOCATED 2310 FT. FROM THE NORTH LINE
AND 1650 FT. FROM THE WEST LINE OF
SECTION 1, TOWNSHIP 18 SOUTH,
RANGE 32 EAST, N.M.P.M.
LEA COUNTY, STATE OF NEW MEXICO

APRIL 28, 2014

SURVEY NO. 2672

MADRON SURVEYING, INC. 301 SOUTH CANAL (575) 234-3341 CARLSBAD, NEW MEXICO

SECTION 1, TOWNSHIP 18 SOUTH, RANGE 32 EAST, N.M.P.M.
LEA COUNTY, STATE OF NEW MEXICO
ACCESS AERIAL ROUTE MAP



NOT TO SCALE
AERIAL PHOTO:
GOOGLE EARTH
FEBRUARY 2014

MACK ENERGY CORPORATION
RINGTAIL FEDERAL #1
LOCATED 2310 FT. FROM THE NORTH LINE
AND 1650 FT. FROM THE WEST LINE OF
SECTION 1, TOWNSHIP 18 SOUTH,
RANGE 32 EAST, N.M.P.M.
LEA COUNTY, STATE OF NEW MEXICO

APRIL 28, 2014

SURVEY NO. 2672

MADRON SURVEYING, INC. 301 SOUTH CANAL (575) 234-3341 CARLSBAD, NEW MEXICO