

DISTRICT I
1625 N. French Dr., Hobbs, NM 88240
Phone: (575) 393-6161 Fax: (575) 393-0720

DISTRICT II
811 S. First St., Artesia, NM 88210
Phone: (575) 748-1283 Fax: (575) 748-9720

DISTRICT III
1000 Rio Brazos Road, Aztec, NM 87410
Phone: (505) 334-6178 Fax: (505) 334-6170

DISTRICT IV
1220 S. St. Francis Dr., Santa Fe, NM 87505
Phone: (505) 476-3460 Fax: (505) 476-3462

State of New Mexico
Energy, Minerals & Natural Resources Department
OIL CONSERVATION DIVISION
1220 South St. Francis Dr.
Santa Fe, New Mexico 87505

Form C-102
Revised August 1, 2011
Submit one copy to appropriate
District Office

AMENDED REPORT

WELL LOCATION AND ACREAGE DEDICATION PLAT

API Number 30-025-	Pool Code 28435	Pool Name GRAMMA RIDGE-BONE SPRING NORTHEAST
Property Code 40096	Property Name GRAMMA 27 STATE	Well Number 4H
OGRID No. 249099	Operator Name CAZA OPERATING, LLC	Elevation 3688'

Surface Location

UL or lot No.	Section	Township	Range	Lot Idn	Feet from the	North/South line	Feet from the	East/West line	County
A	27	21-S	34-E		330	NORTH	330	EAST	LEA

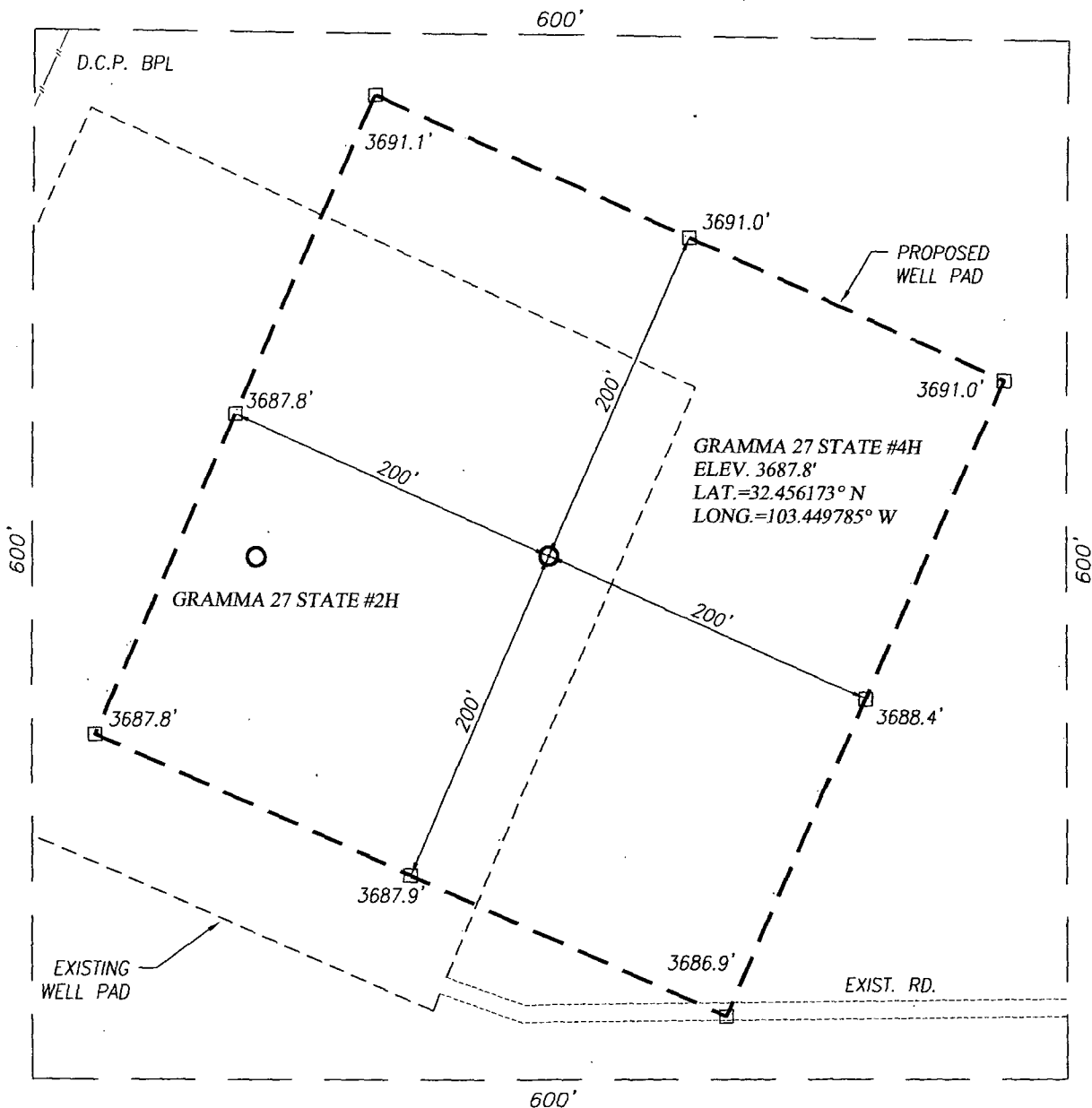
Bottom Hole Location If Different From Surface

UL or lot No.	Section	Township	Range	Lot Idn	Feet from the	North/South line	Feet from the	East/West line	County
P	27	21-S	34-E		330	SOUTH	660	EAST	LEA
Dedicated Acres 160	Joint or Infill	Consolidation Code	Order No.						

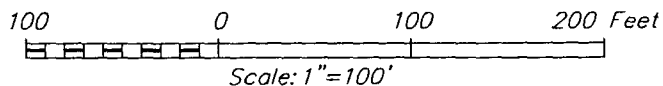
NO ALLOWABLE WILL BE ASSIGNED TO THIS COMPLETION UNTIL ALL INTERESTS HAVE BEEN CONSOLIDATED OR A NON-STANDARD UNIT HAS BEEN APPROVED BY THE DIVISION

<p>GEODETIC COORDINATES NAD 27 NME</p> <p>SURFACE LOCATION Y= 530796.8 N X= 772535.3 E</p> <p>LAT.=32.456173° N LONG.=103.449785° W</p> <p>CORNER COORDINATES TABLE</p> <p>A - Y= 531116.6 N, X= 771540.6 E B - Y= 531130.1 N, X= 772862.4 E C - Y= 525847.5 N, X= 772908.3 E D - Y= 525834.9 N, X= 771587.6 E</p> <p>BOTTOM HOLE LOCATION Y= 526171.1 N X= 772245.6 E</p>		<p>OPERATOR CERTIFICATION</p> <p>I hereby certify that the information herein is true and complete to the best of my knowledge and belief, and that this organization either owns a working interest or unleased mineral interest in the land including the proposed bottom hole location or has a right to drill this well at this location pursuant to a contract with an owner of such mineral or working interest, or to a voluntary pooling agreement or a compulsory pooling order heretofore entered by the division.</p> <p>Signature: <i>Joe T. Janica</i> Date: 08/97/14</p> <p>Printed Name: Joe T. Janica</p> <p>E-mail Address: joejanica@valornet.com</p>
		<p>SURVEYOR CERTIFICATION</p> <p>I hereby certify that the well location shown on this plat was plotted from field notes of actual surveys made by me or under my supervision, and that the same is true and correct to the best of my belief.</p> <p>JULY 30, 2014</p> <p>Date of Survey: JULY 30, 2014</p> <p>Signature: <i>Ronald J. Eidson</i> Seal of Professional Surveyor: NEW MEXICO 3239</p> <p>Certificate Number: 12641 Surveyor: Ronald J. Eidson</p> <p>LSL: JWSC W.O.: 14.11.0773</p>

AUG 11 2014



NOTE:
1) SEE "LOCATION VERIFICATION MAP"
FOR PROPOSED ROAD LOCATION.



DIRECTIONS TO GRAMMA 27 STATE #4H:

FROM THE INTERSECTION ST. HWY 176 AND C.R. C-32 (SAN SIMON) GO WEST ON HWY 176 APPROX 0.25 MILES TURN LEFT AND GO SOUTH ON CALICHE LEASE ROAD APPROX 2.6 MILES TURN RIGHT AND GO WEST 1694' TO GRAMMA 27 ST. #2H PAD. THE LOCATION STAKE IS 250' NORTH.

CAZA OPERATING, LLC

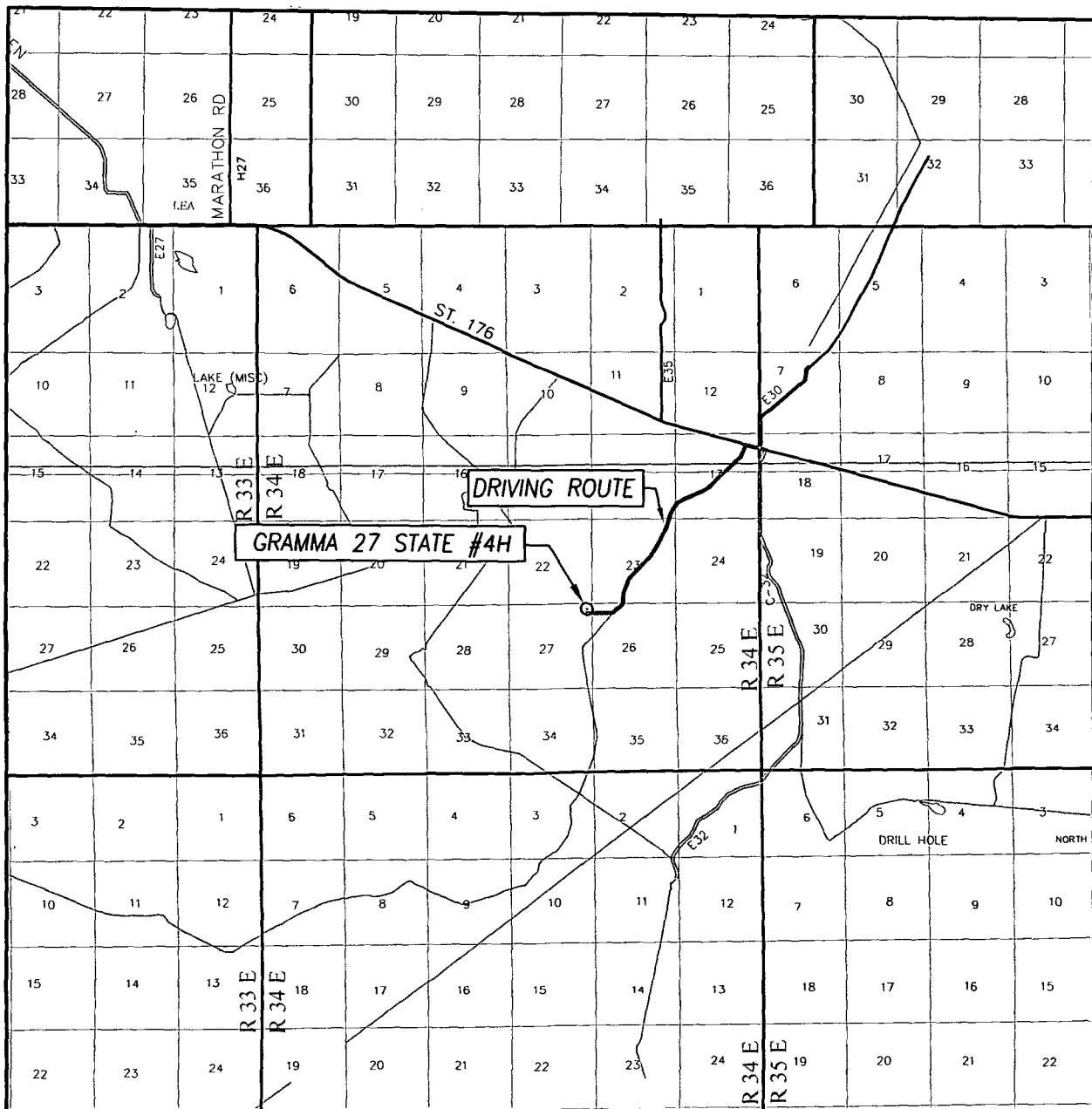
GRAMMA 27 STATE #4H WELL
LOCATED 330 FEET FROM THE NORTH LINE
AND 330 FEET FROM THE EAST LINE OF SECTION 27,
TOWNSHIP 21 SOUTH, RANGE 34 EAST, N.M.P.M.,
LEA COUNTY, NEW MEXICO



PROVIDING SURVEYING SERVICES
SINCE 1946
JOHN WEST SURVEYING COMPANY
412 N. DAL PASO HOBBS, N.M. 88240
(575) 393-3117 www.jwsc.biz
TBPLS# 10021000

Survey Date: 7/30/14	CAD Date: 8/1/14	Drawn By: LSL
W.O. No.: 14110773	Rev: .	Rel. W.O.:
		Sheet 1 of 1

VICINITY MAP



SCALE: 1" = 2 MILES

DRIVING ROUTE: SEE LOCATION VERIFICATION MAP

SEC. 27 TWP. 21-S RGE. 34-E

SURVEY N.M.P.M.

COUNTY LEA STATE NEW MEXICO

DESCRIPTION 330' FNL & 330' FEL

ELEVATION 3688'

OPERATOR CAZA OPERATING, LLC

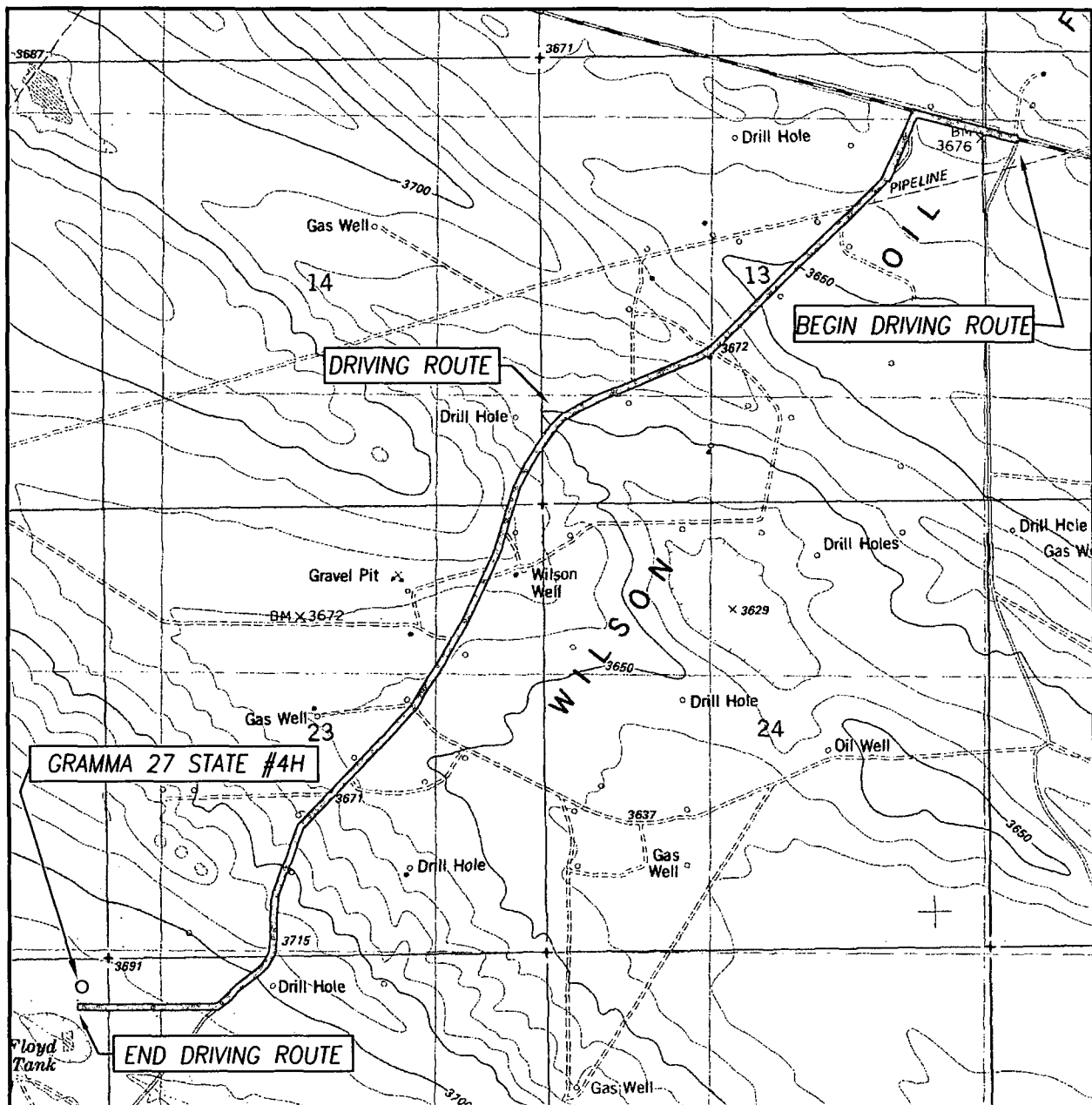
LEASE GRAMMA 27 STATE

PROVIDING SURVEYING SERVICES
SINCE 1946

JOHN WEST SURVEYING COMPANY

412 N. DAL PASO HOBBS, N.M. 88240
(575) 393-3117 www.jwsc.biz
TBPLS# 10021000

LOCATION VERIFICATION MAP



SCALE: 1" = 2000'

CONTOUR INTERVAL:
SAN SIMON RANCH, N.M. - 10'

SEC. 27 TWP. 21-S RGE. 34-E

SURVEY _____ N.M.P.M.

COUNTY LEA STATE NEW MEXICO

DESCRIPTION 330' FNL & 330' FEL

ELEVATION 3688'

OPERATOR CAZA OPERATING, LLC

LEASE GRAMMA 27 STATE

U.S.G.S. TOPOGRAPHIC MAP
SAN SIMON RANCH, N.M.

DIRECTIONS TO GRAMMA 27 STATE #4H:

FROM THE INTERSECTION ST. HWY 176 AND C.R. C-32 (SAN SIMON)
GO WEST ON HWY 176 APPROX 0.25 MILES TURN LEFT AND GO
SOUTH ON CALICHE LEASE ROAD APPROX 2.6 MILES TURN RIGHT AND
GO WEST 1694' TO GRAMMA 27 ST. #2H PAD. THE LOCATION STAKE
IS 250' NORTH.



PROVIDING SURVEYING SERVICES
SINCE 1946
JOHN WEST SURVEYING COMPANY
412 N. DAL PASO HOBBS, N.M. 88240
(575) 393-3117 www.jwsc.biz
TBPLS# 10021000