

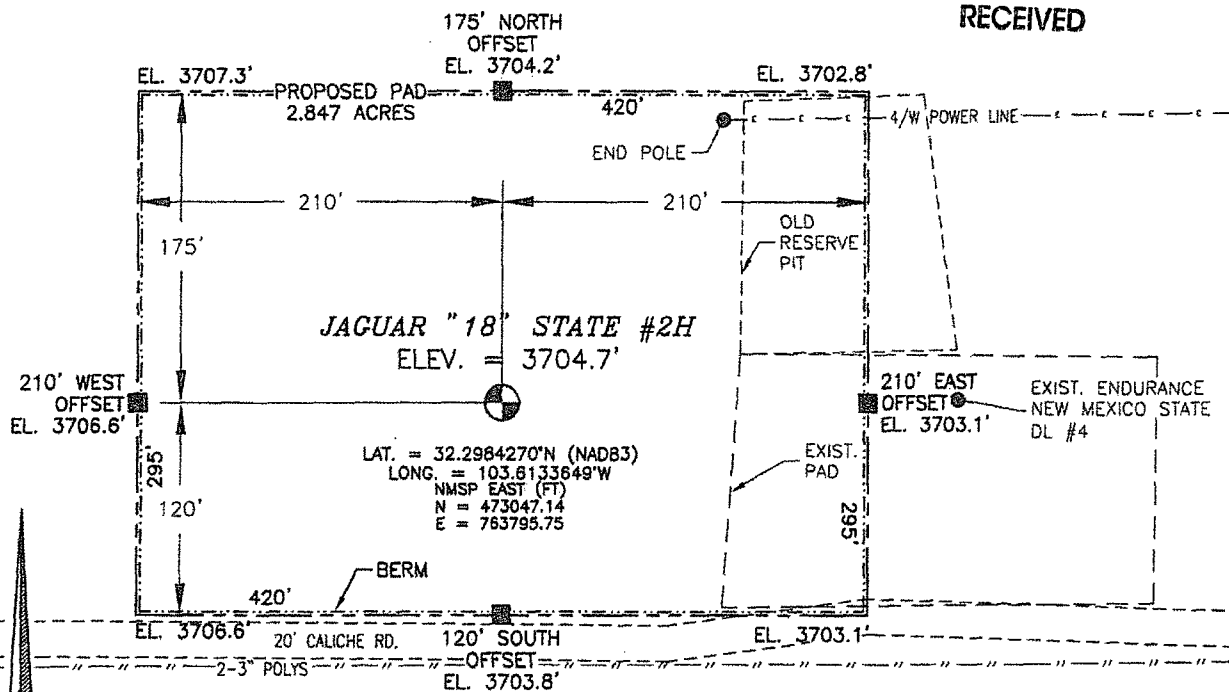
SECTION 18, TOWNSHIP 23 SOUTH, RANGE 33 EAST, N.M.P.M.  
LEA COUNTY, STATE OF NEW MEXICO  
**SITE MAP**

NOTE: LATITUDE AND LONGITUDE COORDINATES ARE SHOWN USING THE NORTH AMERICAN DATUM OF 1983 (NAD83). LISTED NEW MEXICO STATE PLANE EAST COORDINATES ARE GRID (NAD83). BASIS OF BEARING AND DISTANCES USED ARE NEW MEXICO STATE PLANE EAST COORDINATES MODIFIED TO THE SURFACE

HOBBS OCD

AUG 12 2014

RECEIVED



010 50 100 200

SCALE 1" = 100'

DIRECTIONS TO LOCATION

FROM STATE HIGHWAY 128 AND CR 21 (DELAWARE BASIN) GO NORTH ON CR 21 6.1 MILES, TURN LEFT ON CALICHE ROAD AND GO WEST 5.9 MILES AND LOCATION IS ON THE RIGHT (NORTH) 130'.

ENDURANCE RESOURCES, LLC  
**JAGUAR "18" STATE #2H**  
LOCATED 330 FT. FROM THE SOUTH LINE  
AND 1980 FT. FROM THE WEST LINE OF  
SECTION 18, TOWNSHIP 23 SOUTH,  
RANGE 33 EAST, N.M.P.M.  
LEA COUNTY, STATE OF NEW MEXICO

APRIL 16, 2014

SURVEY NO. 2922

MADRON SURVEYING, INC. 301 SOUTH CANAL (575) 234-3341 CARLSBAD, NEW MEXICO

AUG 12 2014

**NOT TO SCALE**

APRIL 16, 2014

**MADRON SURVEYING, INC.** 301 SOUTH CANAL (575) 234-3341 **CARLSBAD, NEW MEXICO**

JAGUAR #18  
STATE #2H

5.9 MILES

5.1 MILES

CR 2 (DEBARKER BASIN)

OIL FIELD

Landing Strip

STATE HIGHWAY 128

NOT TO SCALE

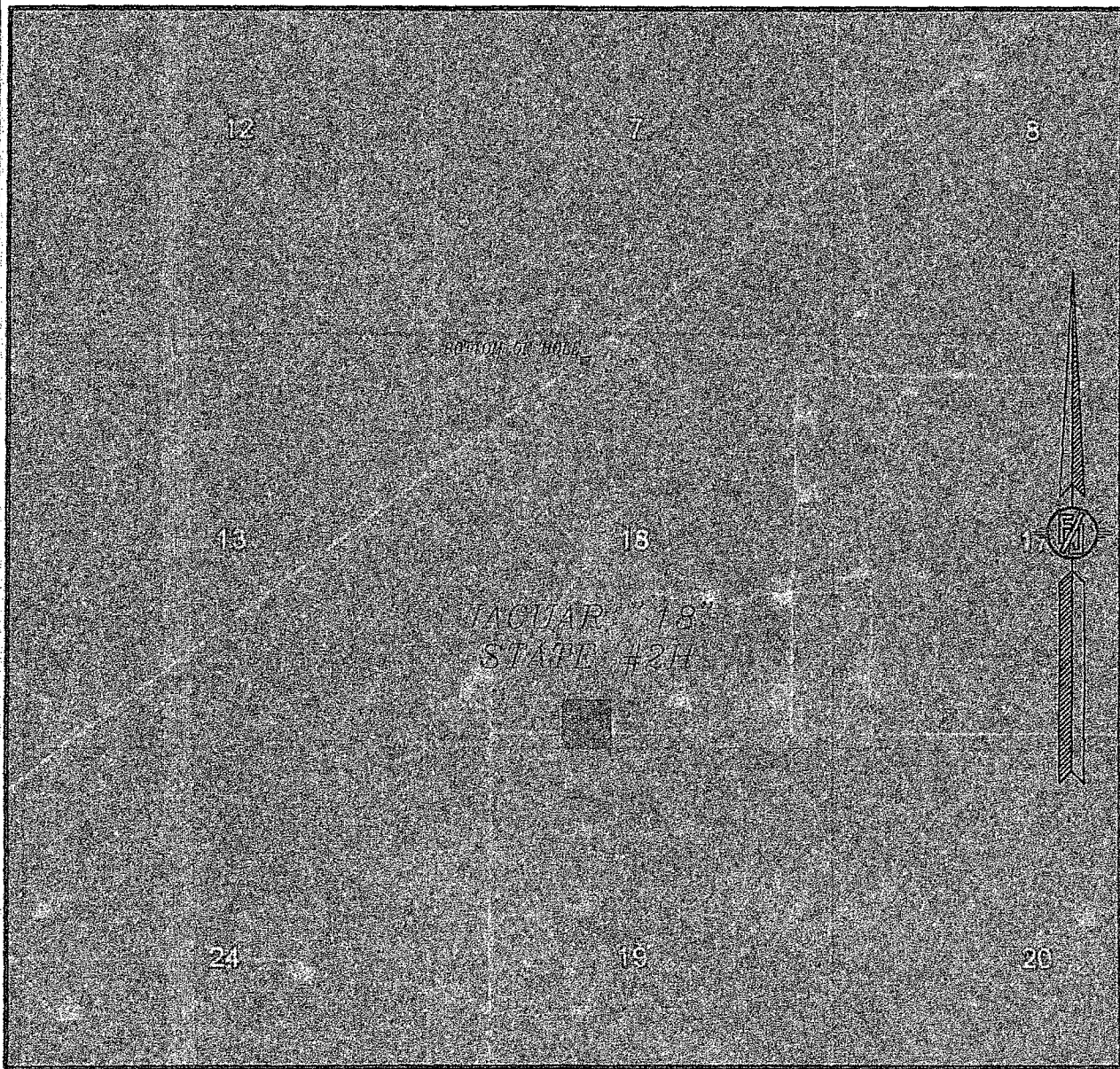
FROM STATE HIGHWAY 12B AND CR 21 (DELAWARE BASIN) GO NORTH ON CR 21 6.1 MILES, TURN LEFT ON CALICHE ROAD AND GO WEST 5.9 MILES AND LOCATION IS ON THE RIGHT (NORTH) 130'.

APRIL 16, 2014

SURVEY NO. 2922

MADRON SURVEYING, INC. 301 SOUTH CANAL CARLSBAD, NEW MEXICO  
(575) 234-3341

SECTION 18, TOWNSHIP 23 SOUTH, RANGE 33 EAST, N.M.P.M.  
LEA COUNTY, STATE OF NEW MEXICO  
AERIAL PHOTO



NOT TO SCALE  
AERIAL PHOTO:  
GOOGLE EARTH  
FEBRUARY 2014

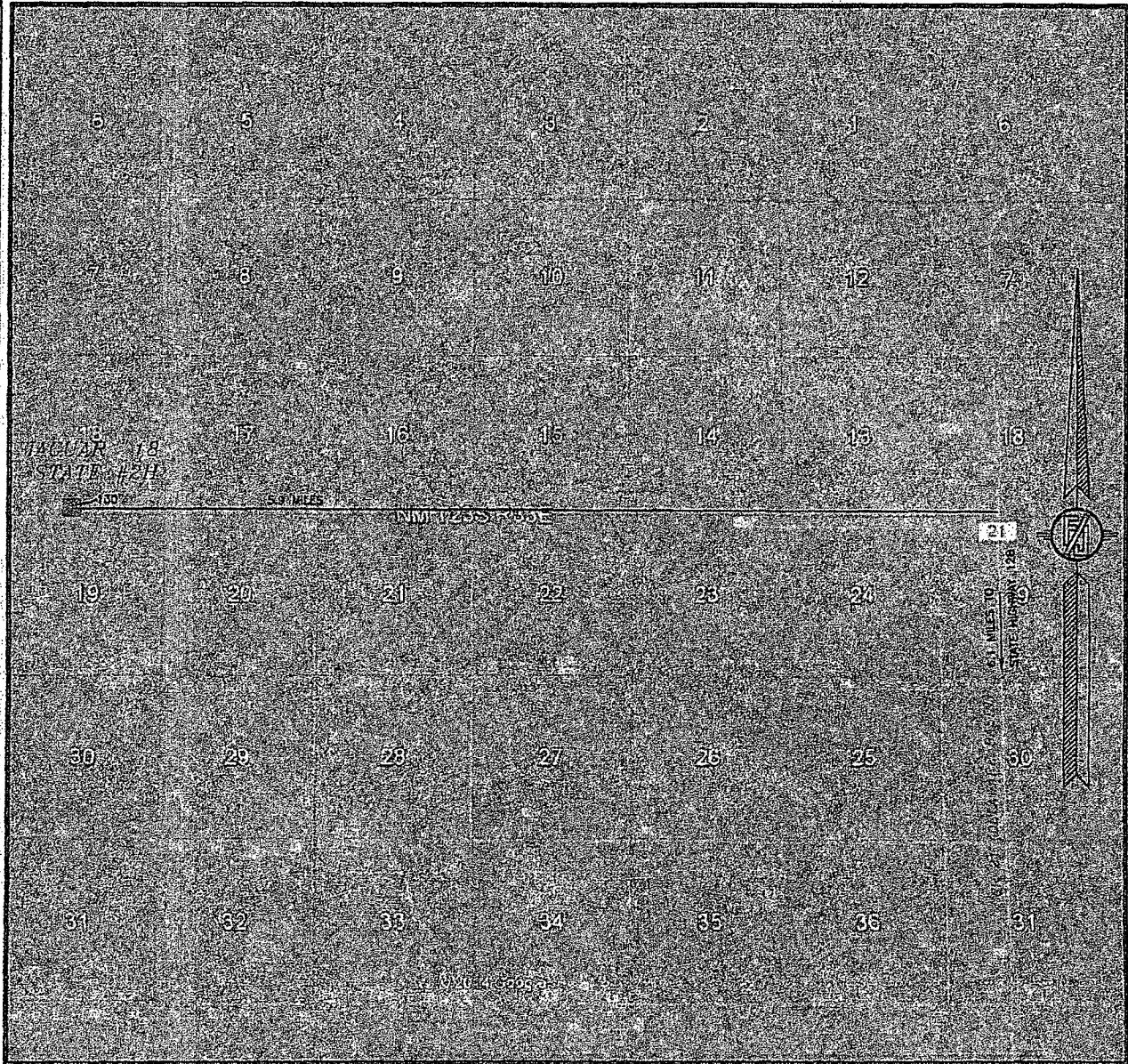
ENDURANCE RESOURCES, LLC  
JAGUAR "18" STATE #2H  
LOCATED 330 FT. FROM THE SOUTH LINE  
AND 1980 FT. FROM THE WEST LINE OF  
SECTION 18, TOWNSHIP 23 SOUTH,  
RANGE 33 EAST, N.M.P.M.  
LEA COUNTY, STATE OF NEW MEXICO

APRIL 16, 2014

SURVEY NO. 2922

MADRON SURVEYING, INC. 301 SOUTH CANAL (575) 234-3341 CARLSBAD, NEW MEXICO

SECTION 18, TOWNSHIP 23 SOUTH, RANGE 33 EAST, N.M.P.M.  
LEA COUNTY, STATE OF NEW MEXICO  
ACCESS AERIAL ROUTE MAP



NOT TO SCALE  
AERIAL PHOTO:  
GOOGLE EARTH  
FEBRUARY 2014

ENDURANCE RESOURCES, LLC  
JAGUAR "18" STATE #2H  
LOCATED 330 FT. FROM THE SOUTH LINE  
AND 1980 FT. FROM THE WEST LINE OF  
SECTION 18, TOWNSHIP 23 SOUTH,  
RANGE 33 EAST, N.M.P.M.  
LEA COUNTY, STATE OF NEW MEXICO

APRIL 16, 2014

SURVEY NO. 2922

MADRON SURVEYING, INC. 301 SOUTH CANAL (979) 234-3341 CARLSBAD, NEW MEXICO