

District I
1625 N. French Dr., Hobbs, NM 88240
Phone: (575) 393-6161 Fax: (575) 393-0720
District II
811 S. First St., Artesia, NM 88210
Phone: (575) 748-1283 Fax: (575) 748-9720
District III
1000 Rio Brazos Road, Aztec, NM 87410
Phone: (505) 334-6178 Fax: (505) 334-6170
District IV
1220 S. St. Francis Dr., Santa Fe, NM 87505
Phone: (505) 476-3460 Fax: (505) 476-3462

State of New Mexico
Energy, Minerals & Natural Resources Department
OIL CONSERVATION DIVISION
1220 South St. Francis Dr.
Santa Fe, NM 87505

HOBBS OCD

AUG 21 2014

RECEIVED

Form C-102
Revised August 1, 2011
Submit one copy to appropriate
District Office

AMENDED REPORT

WELL LOCATION AND ACREAGE DEDICATION PLAT

¹ API Number 30-025-42059	² Pool Code 96434	³ Pool Name Red Hills, Bone Spring, North
⁴ Property Code 40461	⁵ Property Name GRAMMA RIDGE 14 24 34	
⁷ OGRID No. 47323	⁸ Operator Name CHEVRON U.S.A. INC.	⁶ Well Number 5H
		⁹ Elevation 3500'

¹⁰ Surface Location

UL or lot no.	Section	Township	Range	Lot Idn	Feet from the	North/South line	Feet from the	East/West line	County
C	14	24 SOUTH	34 EAST, N.M.P.M.		330'	NORTH	2310'	WEST	LEA

¹¹ Bottom Hole Location If Different From Surface

UL or lot no.	Section	Township	Range	Lot Idn	Feet from the	North/South line	Feet from the	East/West line	County
N	14	24 SOUTH	34 EAST, N.M.P.M.		280'	SOUTH	1980'	WEST	LEA

¹² Dedicated Acres 160	¹³ Joint or Infill	¹⁴ Consolidation Code	¹⁵ Order No.
--------------------------------------	-------------------------------	----------------------------------	-------------------------

No allowable will be assigned to this completion until all interests have been consolidated or a non-standard unit has been approved by the division.

¹⁶

Proposed First Take Point
330' FNL, 2310' FWL

Proposed Last Take Point
330' FSL, 1984' FWL

Proposed Producing Interval

S 03°33'34" W 4,677.20'

330'

280'

1980'

2310'

330'

GRAMMA RIDGE 14 24 34 5H WELL	
X=	775,841 NAD 27
Y=	446,260
LAT.	32.223739
LONG.	103.441352
X=	817,026 NAD83
Y=	446,319
LAT.	32.223864
LONG.	103.441825
ELEVATION	+3600' NAVD 88

CORNER COORDINATES TABLE (NAD 27)

A - Y=446581.52, X=774849.59
B - Y=446593.16, X=776171.00
C - Y=445262.81, X=774860.71
D - Y=445274.23, X=776182.05
E - Y=441306.70, X=774894.06
F - Y=441317.46, X=776215.18

PROPOSED BOTTOM HOLE LOCATION	
X=	775,551 NAD 27
Y=	441,592
LAT.	32.210914
LONG.	103.442416
X=	816,735 NAD83
Y=	441,651
LAT.	32.211039
LONG.	103.442889

¹⁷ OPERATOR CERTIFICATION

I hereby certify that the information contained herein is true and complete to the best of my knowledge and belief, and that this organization either owns a working interest or unleased mineral interest in the land including the proposed bottom hole location or has a right to drill this well at this location pursuant to a contract with an owner of such a mineral or working interest, or to a voluntary pooling agreement or a compulsory pooling order heretofore entered by the division.

Denise Pinkerton 08/21/2014
Signature Date

Denise Pinkerton
Printed Name

leakej@chevron.com
E-mail Address

¹⁸ SURVEYOR CERTIFICATION

I hereby certify that the well location shown on this plat was plotted from field notes of actual surveys made by me or under my supervision, and that the same is true and correct to the best of my belief.

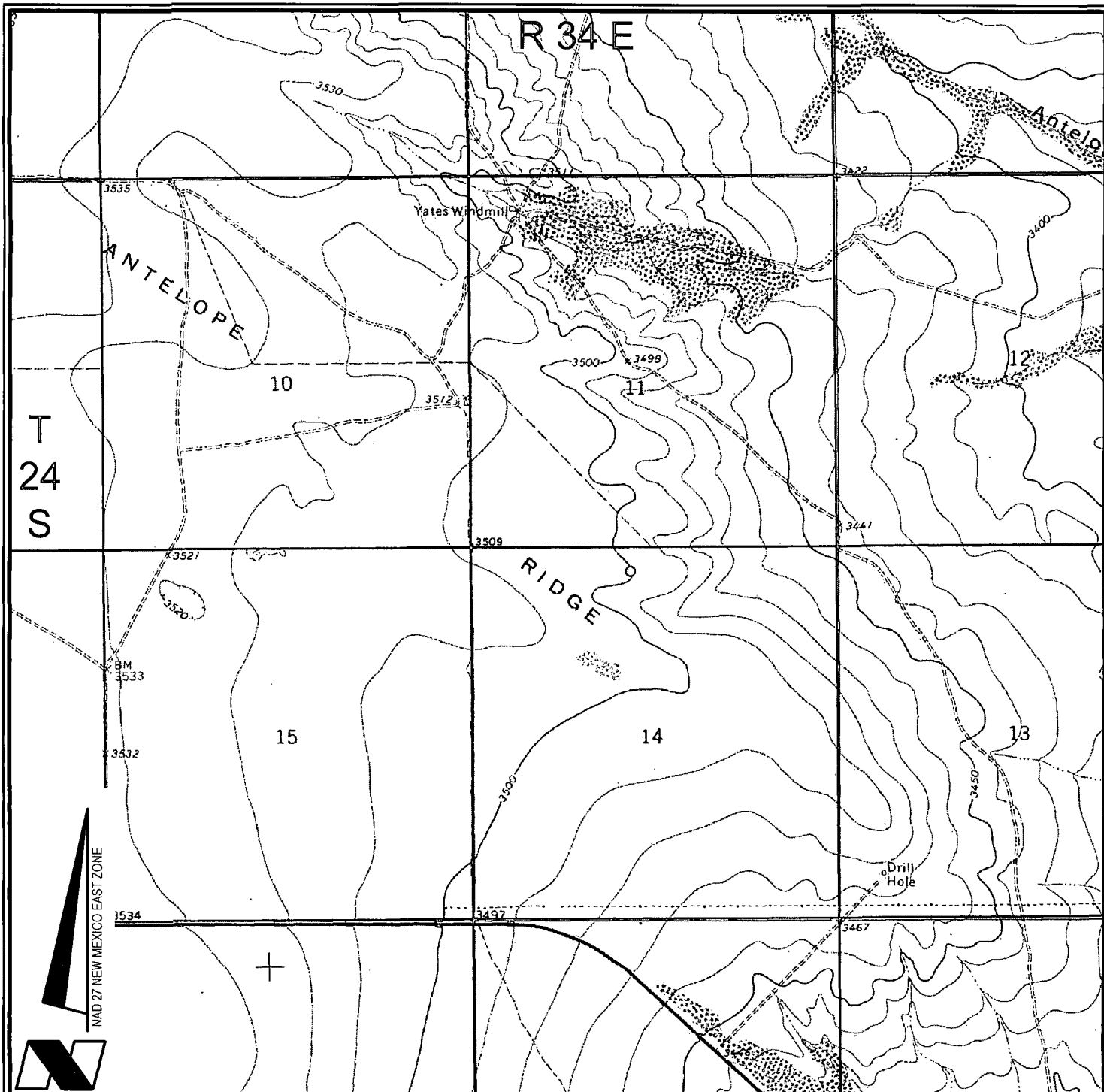
6.10.14
Date of Survey

W.M. J. Daniel III
Signature and Seal of Professional Surveyor

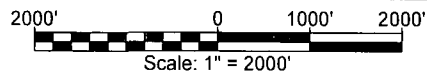
W.M. J. DANIEL III
NEW MEXICO
REGISTERED PROFESSIONAL SURVEYOR
15078

Certificate Number
#15078

AUG 26 2014



VICINITY MAP



CHEVRON U.S.A. INC.
 GRAMMA RIDGE 14 24 34 NO. 5H WELL
 LOCATED 330' FNL AND 2310' FWL
 SECTION 14, T24S-R34E
 LEA COUNTY, NEW MEXICO



Lafayette New Orleans Houston
 135 Regency Sq. Lafayette, LA 70508
 Ph. 337-237-2200 Fax. 337-232-3299
www.fenstermaker.com

DRAWN BY: BMO

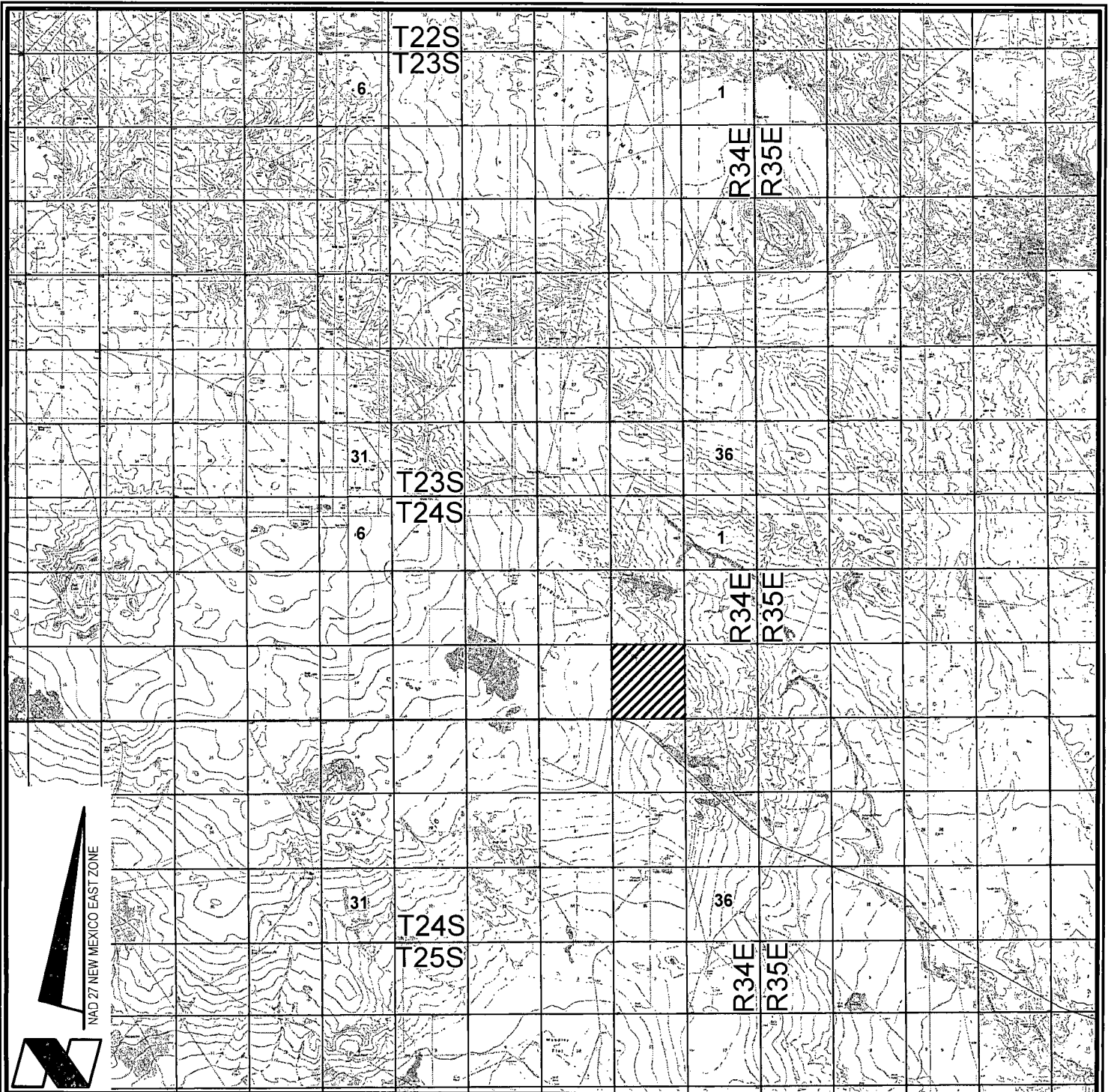
REVISED:

DATE: JUNE 3, 2014

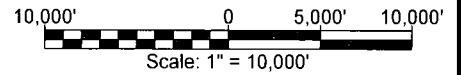
PROJ. MGR.: VHV

SHEET 1 OF 3 SHEETS

FILENAME: T:\2014\2144955\DWG\Gammaamma Ridge 14 24 34 5H_APD.dwg



VICINITY MAP



CHEVRON U.S.A. INC.

GRAMMA RIDGE 14 24 34 NO. 5H WELL
 LOCATED 330' FNL AND 2310' FWL
 SECTION 14, T24S-R34E
 LEA COUNTY, NEW MEXICO



Lafayette New Orleans Houston
 135 Regency Sq. Lafayette, LA 70508
 Ph. 337-237-2200 Fax. 337-232-3299
 www.fenstermaker.com

DRAWN BY: BMO

REVISED:

DATE: JUNE 3, 2014

PROJ. MGR.: VHV

SHEET 2 OF 3 SHEETS

FILENAME: T:\2014\2144955\DWG\Gammaamma Ridge 14 24 34 5H_APD.dwg