

HOBBS CCD

AUG 29 2014

RECEIVED

- 1 All Company and Contract personnel admitted on location must be trained by a qualified H2S safety instructor to the following:
 - A. Characteristics of H₂S
 - B. Physical effects and hazards
 - C. Principal and operation of H₂S detectors, warning system and briefing areas.
 - D. Evacuation procedure, routes and first aid.
 - E. Proper use of safety equipment & life support systems
 - F. Essential personnel meeting Medical Evaluation criteria will receive additional training on the proper use of 30 minute pressure demand air packs.
- 2 H₂S Detection and Alarm Systems:
 - A. H₂S sensors/detectors to be located on the drilling rig floor, in the base of the sub structure/cellar area, on the mud pits in the shale shaker area. Additional H₂S detectors may play placed as deemed necessary.
 - B.
An audio alarm system will be installed on the derrick floor and in the top doghouse.
- 3 Windsock and/or wind streamers:
 - A. Windsock at mudpit area should be high enough to be visible.
 - B.
Windsock on the rig floor and / or top doghouse should be high enough to be visible.
- 4 Condition Flags and Signs
 - A. Warning sign on access road to location.
 - B. Flags to be displayed on sign at entrance to location. Green flag indicates normal safe condition. Yellow flag indicates potential pressure and danger. Red flag indicates danger (H₂S present in dangerous concentration). Only H₂S trained and certified personnel admitted to location.
- 5 Well control equipment:
 - A. See exhibit "E-1"
- 6 Communication:
 - A. While working under masks chalkboards will be used for communication.
 - B. Hand signals will be used where chalk board is inappropriate.
 - C. Two way radio will be used to communicate off location in case of emergency help is required. In most cases cellular telephones will be available at most drilling foreman's trailer or living quarters.
- 7 Drillstem Testing:

No DSTs r cores are planned at this time.
- 8 Drilling contractor supervisor will be required to be familiar with the effects H₂S has on tubular goods and other mechanical equipment.
- 9 If H₂S is encountered, mud system will be altered if necessary to maintain control of formation. A mud gas separator will be brought into service along with H₂S scavengers if necessary.

H₂S Contingency Plan
Triste Draw 25 Federal Com 10H
Cimarex Energy Co.
UL: M, Sec. 25, 23S, 32E
Lea Co., NM

Emergency Procedures

In the event of a release of gas containing H₂S, the first responder(s) must:

- « Isolate the area and prevent entry by other persons into the 100 ppm ROE.
- « Evacuate any public places encompassed by the 100 ppm ROE.
- « Be equipped with H₂S monitors and air packs in order to control the release.
- « Use the "buddy system" to ensure no injuries occur during the response.
- « Take precautions to avoid personal injury during this operation.
- « Contact operator and/or local officials to aid in operation. See list of phone numbers attached.
- « Have received training in the:
 - Detection of H₂S, and
 - Measures for protection against the gas,
 - Equipment used for protection and emergency response.

Ignition of Gas Source

Should control of the well be considered lost and ignition considered, take care to protect against exposure to Sulfur Dioxide (SO₂). Intentional ignition must be coordinated with the NMOCD and local officials. Additionally, the NM State Police may become involved. NM State Police shall be the Incident Command on scene of any major release. Take care to protect downwind whenever there is an ignition of the gas.

Characteristics of H₂S and SO₂

Please see attached International Chemical Safety Cards.

Contacting Authorities

Cimarex Energy Co. of Colorado's personnel must liaise with local and state agencies to ensure a proper response to a major release. Additionally, the OCD must be notified of the release as soon as possible but no later than 4 hours. Agencies will ask for information such as type and volume of release, wind direction, location of release, etc. Be prepared with all information available including directions to site. The following call list of essential and potential responders has been prepared for use during a release. Cimarex Energy Co. of Colorado's response must be in coordination with the State of New Mexico's "Hazardous Materials Emergency Response Plan" (HMER).

H₂S Contingency Plan Emergency Contacts
Triste Draw 25 Federal Com 10H
 Cimarex Energy Co.
 UL: M, Sec. 25, 23S, 32E
 Lea Co., NM

Company Office

Cimarex Energy Co. of Colorado	800-969-4789
Co. Office and After-Hours Menu	

Key Personnel

Name	Title	Office	Mobile
Larry Seigrist	Drilling Manager	432-620-1934	580-243-8485
Doug McQuitty	Drilling Superintendent	432-620-1933	806-640-2605
Scott Lucas	Drilling Superintendent	432-620-1989	432-894-5572
Roy Shirley	Construction Superintendent		432-634-2136

Artesia

Ambulance	911
State Police	575-746-2703
City Police	575-746-2703
Sheriff's Office	575-746-9888
Fire Department	575-746-2701
Local Emergency Planning Committee	575-746-2122
New Mexico Oil Conservation Division	575-748-1283

Carlsbad

Ambulance	911
State Police	575-885-3137
City Police	575-885-2111
Sheriff's Office	575-887-7551
Fire Department	575-887-3798
Local Emergency Planning Committee	575-887-6544
US Bureau of Land Management	575-887-6544

Santa Fe

New Mexico Emergency Response Commission (Santa Fe)	505-476-9600
New Mexico Emergency Response Commission (Santa Fe) 24 Hrs	505-827-9126
New Mexico State Emergency Operations Center	505-476-9635

National

National Emergency Response Center (Washington, D.C.)	800-424-8802
---	--------------

Medical

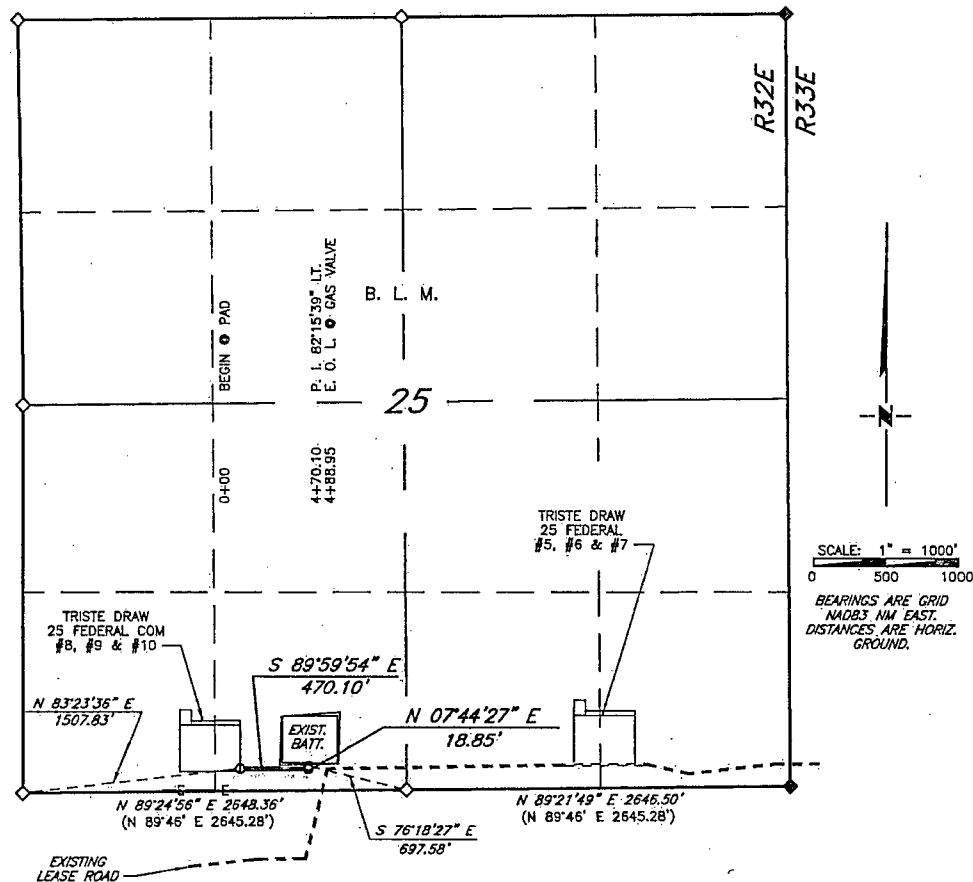
Flight for Life - 4000 24th St.; Lubbock, TX	806-743-9911
Aerocare - R3, Box 49F; Lubbock, TX	806-747-8923
Med Flight Air Amb - 2301 Yale Blvd S.E., #D3; Albuquerque, NM	505-842-4433
SB Air Med Service - 2505 Clark Carr Loop S.E.; Albuquerque, NM	505-842-4949

Other

Boots & Coots IWC	800-256-9688	or	281-931-8884
Cudd Pressure Control	432-699-0139	or	432-563-3356
Halliburton	575-746-2757		
B.J. Services	575-746-3569		

CIMAREX ENERGY COMPANY

4" FLOW LINE EASEMENT TO TRISTE DRAW FEDERAL COM #8, #9 & #10
SEC. 25, T23S, R32E, N.M.P.M., LEA CO., N.M.



DESCRIPTION

A strip of land, 30 feet in width, being 488.95 feet or 29.633 rods in length situated in Section 25, Township 23 South, Range 32 East, N. M. P. M., Lea County, New Mexico, being 15 feet left and 15 feet right of the following described survey of centerline across the land of the B. L. M.:

Beginning at Engr. Sta. 0+00, a point which lies N 83°23'36" E, 1,507.83 feet from a brass cap stamped "1916" found for the Southwest corner of the aforementioned Section 25;

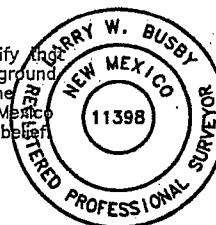
Thence S 89°59'54" E, 470.10 feet to Engr. Sta. 4+70.10, a P. I. of 82°15'39" left;

Thence N 07°44'27" E, 18.85 feet to Engr. Sta. 4+88.95, the end of the survey, from which a brass cap stamped "1916" found for the South quarter corner of the above-mentioned Section 25 bears S 76°18'27" E, 697.58 feet;

Said strip of land containing 0.337 acre, more or less all within the SE 1/4 SW 1/4.

I, Larry W. Busby, a N. M. Professional Surveyor, hereby certify that this plat was prepared from an actual survey made on the ground under my direct supervision and the survey and plat meet the Minimum Standards for Land Surveying in the State of New Mexico and are true and correct to the best of my knowledge and belief.

Larry W. Busby
NM PS 11398



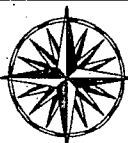
LEGEND

- () RECORD DATA - GLO
- ◇ FOUND BRASS CAP STAMPED "1916"
- ◆ FOUND BRASS CAP STAMPED "1913"

Copyright 2013 - All Rights Reserved

NO.	REVISION	DATE
JOB NO.:	LS130530	
DWG. NO.:	130530FL1	

PROSPERITY CONSULTANTS, LLC

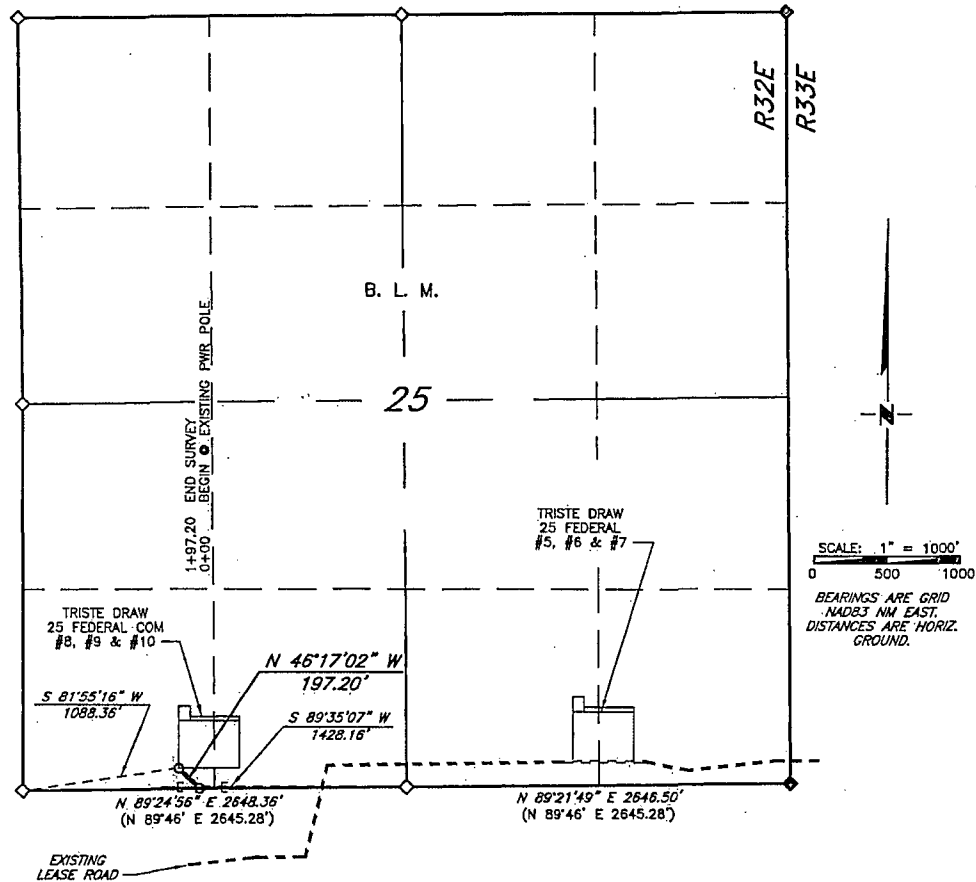


3801 Doris Lane, Round Rock, Texas 78664 | Firm No.: TX 10193838 NM 4655451 | (512) 992-2087

SCALE: 1" = 1000'
DATE: 12/18/13
SURVEYED BY: GB/IE
DRAWN BY: LWB
APPROVED BY: LWB
SHEET : 1 OF 1

Exhibit G

ÇIMAREX ENERGY COMPANY
ELECTRIC LINE EASEMENT TO TRISTE DRAW FEDERAL COM #8, #9 & #10
SEC. 25, T23S, R32E, N.M.P.M., LEA CO., N.M.



DESCRIPTION

A strip of land, 30 feet in width, being 197.20 feet or 11.952 rods in length situated in Section 25, Township 23 South, Range 32 East, N. M. P. M., Lea County, New Mexico, being 15 feet left and 15 feet right of the following described survey of centerline across the land of the B. L. M.:

Beginning at a existing power pole which lies S 89°35'07\" W, 1,428.16 feet from a brass cap stamped "1916" found for the South quarter corner of the aforementioned Section 25;

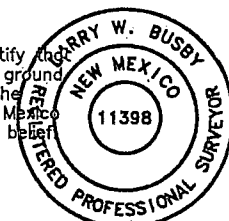
Thence N 46°17'02\" W, 197.20 feet to the end of the survey, from which a brass cap stamped "1916" found for the Southwest corner of the above-mentioned Section 25 bears S 81°55'16\" W, 1088.36 feet;

Said strip of land containing 0.136 acre, more or less all within the SW 1/4 SW 1/4.


- LEGEND**
- () RECORD DATA - GLO
 - ◇ FOUND BRASS CAP STAMPED "1916"
 - ◆ FOUND BRASS CAP STAMPED "1913"

I, Larry W. Busby, a N. M. Professional Surveyor, hereby certify that this plat was prepared from an actual survey made on the ground under my direct supervision and the survey and plat meet the Minimum Standards for Land Surveying in the State of New Mexico and are true and correct to the best of my knowledge and belief.

Larry W. Busby
 NM PS 11398



Copyright 2013 - All Rights Reserved

			PROSPERITY CONSULTANTS, LLC				SCALE: 1" = 1000'
							DATE: 12/18/13
NO.	REVISION	DATE					SURVEYED BY: GB/IE
JOB NO.: LS130530							DRAWN BY: LWB
DWG. NO.: 130530PR1B			3801 Doris Lane, Round Rock, Texas 78664 Firm No.: TX 10193838 NM 4655451 (512) 992-2087				APPROVED BY: LWB
							SHEET : 1 OF 1

3801 Doris Lane, Round Rock, Texas 78664 | Firm No.: TX 10193838 NM 4655451 | (512) 992-2087

Exhibit H

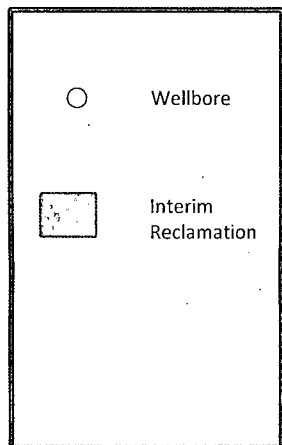
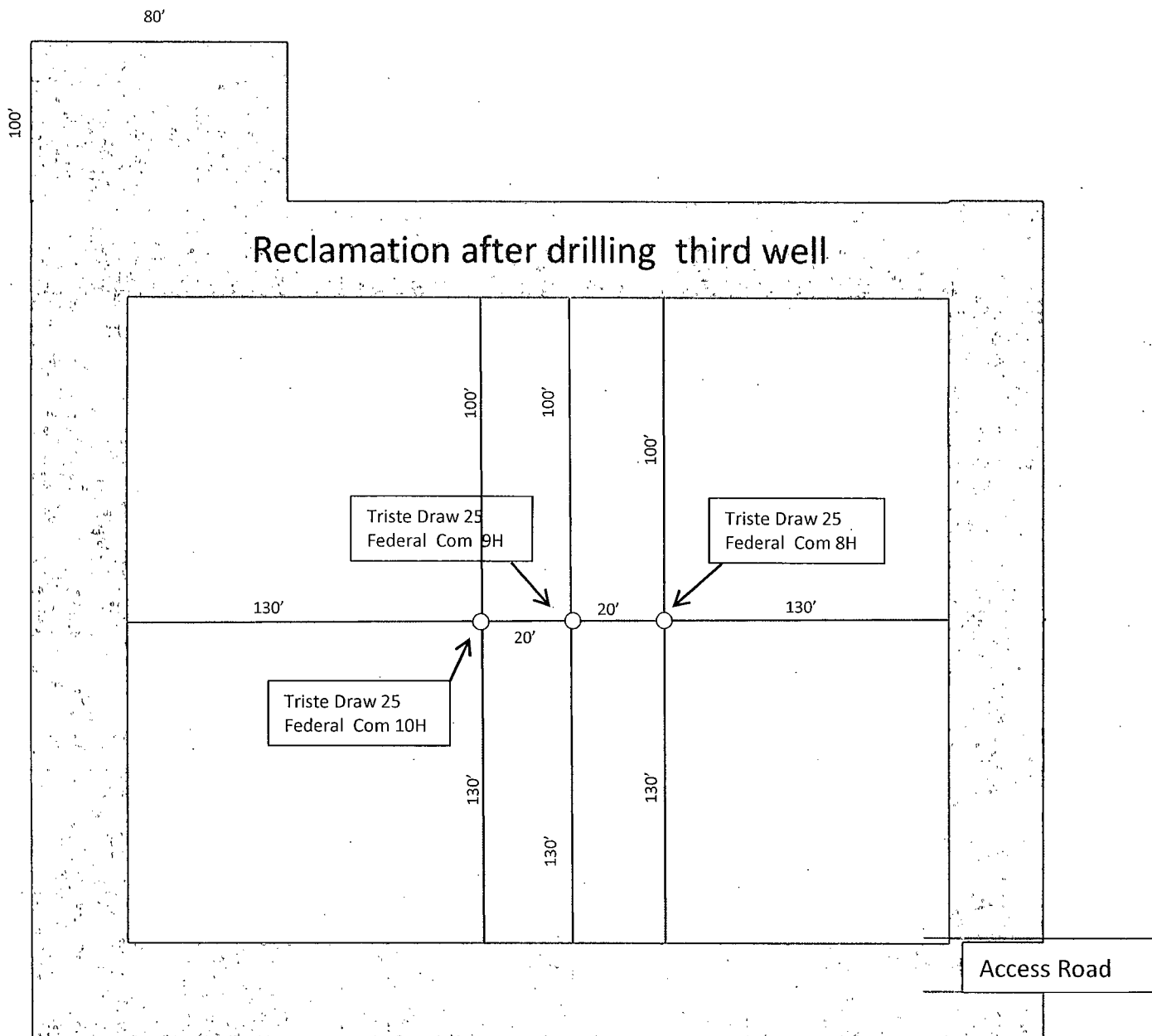


Exhibit D-1
Interim Reclamation Diagram
Triste Draw 25 Federal Com 10H
Cimarex Energy Co.
25-23S-32E
SHL 330 FSL & 1270 FWL
BHL 330 FNL & 440FWL
Lea County, NM