

**DISTRICT IV**  
1220 S. ST. FRANCIS DR., SANTA FE, NM 87505  
Phone: (505) 478-3480 Fax: (505) 478-3462

Department  
HHS  
HHS OCD

District Office

☐ AMENDED REPORT

## WELL LOCATION AND ACREAGE DEDICATION PLAT RECEIVED

API Number <b>30-025-42132</b>	Pool Code <b>53560</b>	Pool Name <b>Salt Lake; Bone Spring</b>
Property Code <b>32342</b>	Property Name <b>LAGUNA 16 STATE</b>	Well Number <b>9H</b>
OGRID No. <b>151416</b>	Operator Name <b>FASKEN OIL &amp; RANCH, LTD.</b>	Elevation <b>3512.3</b>

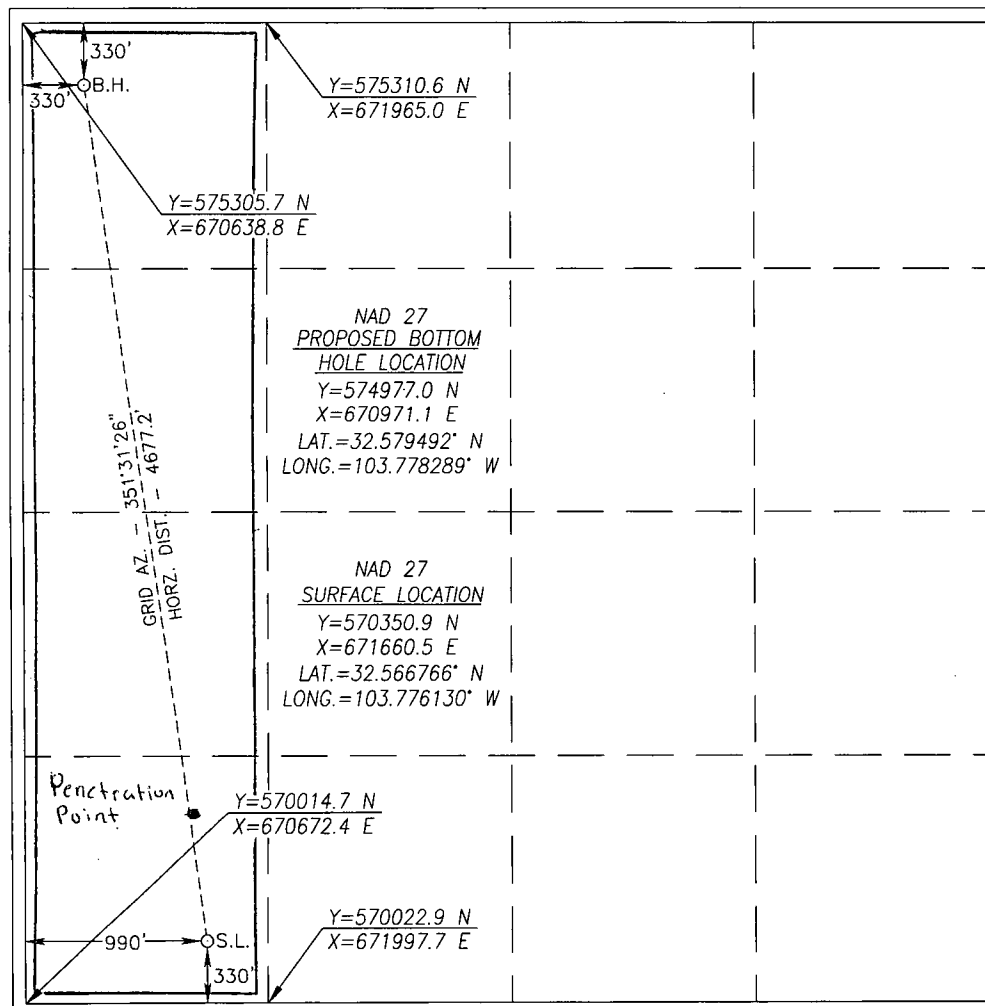
### Surface Location

UL or lot No.	Section	Township	Range	Lot Idn	Feet from the	North/South line	Feet from the	East/West line	County
<del>D</del> M	16	20-S	32-E		330	SOUTH	990	WEST	LEA

## Bottom Hole Location If Different From Surface

UL or lot No. M <b>D</b>	Section 16	Township 20-S	Range 32-E	Lot Idn	Feet from the 330	North/South line NORTH	Feet from the 330	East/West line WEST	County LEA
Dedicated Acres 160	Joint or Infill	Consolidation Code		Order No.					

NO ALLOWABLE WILL BE ASSIGNED TO THIS COMPLETION UNTIL ALL INTERESTS HAVE BEEN CONSOLIDATED  
OR A NON-STANDARD UNIT HAS BEEN APPROVED BY THE DIVISION



## OPERATOR CERTIFICATION

*I hereby certify that the information herein is true and complete to the best of my knowledge and belief, and that I have no knowledge either of any working interest or unleased mineral interest in the land including the proposed bottom hole location or has a right to drill this well at this location pursuant to a contract with an owner of such mineral or working interest, or to a voluntary pooling agreement or a compulsory pooling order heretofore entered by the division.*

Signature Kim Zygm Date 9-17-2014

Kim Tyson  
Printed Name  
kimt@forl.com  
E-mail Address

### SURVEYOR CERTIFICATION

I hereby certify that the well location shown on this plat was plotted from field notes of actual surveys made by me or under my supervision, and that the same is true and correct to the best of my belief.

SEPTEMBER 15, 2014

Date of Survey \_\_\_\_\_

**Signature & Seal of Professional Surveyor**



Certificate No. CHAD HARCROW 17777  
 W.O. # 14-832 DRAWN BY: AM

Penetration Point - MD - 10,115'; TVD - 9749' 900' FSL &amp; 400' FWL

SEP 22 2014



**HOBBS OCD**

**SEP 19 2014**

**RECEIVED**

**CONTINGENCY PLAN FOR HYDROGEN SULFIDE DISCHARGE  
DRILLING OPERATIONS**

**Fasken Oil and Ranch, Ltd.**

6101 Holiday Hill Road  
Midland, TX 79707

## CONTINGENCY PLAN FOR HYDROGEN SULFIDE DISCHARGE

### DRILLING OPERATIONS

- I. **HYDROGEN SULFIDE PHYSICAL PROPERTIES AND TOXICITY** - Hydrogen sulfide is extremely toxic and smells like rotten eggs in low volumes. The acceptable concentration for eight-hour exposure is 10 ppm, which is .001% by volume. Hydrogen sulfide is heavier than air (specific gravity - 1.187) and is colorless. It forms an explosive mixture with air between 4.3 and 46.0 volume percent. Toxicity data for hydrogen sulfide and various gasses are compared in the table below.

Common Name	Chemical Formula	Sp. Gravity (Air =1)	Threshold Limit	Hazardous Limit	Lethal Conc.
Hydrogen Cyanide	HCN	0.94	10 ppm	150 ppm	300 ppm
Hydrogen Sulfide	H <sub>2</sub> S	1.18	10 ppm *	100 ppm/hr	500 ppm
Sulfur Dioxide	SO <sub>2</sub>	2.21	5 ppm	--	1000 ppm
Chlorine	Cl <sub>2</sub>	2.45	1 ppm	4 ppm/hr	1000 ppm
Carbon Monoxide	CO	0.97	50 ppm	400 ppm/hr	1000 ppm
Carbon Dioxide	CO <sub>2</sub>	1.52	5000 ppm	5%	10%
Methane	CH <sub>4</sub>	0.55	90,000 ppm	Combustible above 5% in air	---

\*Threshold Limit - concentration at which it is believed that all workers may be repeatedly exposed day after day without adverse effects, 10 ppm = 1972 ACGIH concentration (American Conference of Governmental Industrial Hygienist) and Occupational Safety and Health Administration (OSHA).

- II. **PHYSICAL EFFECTS OF HYDROGEN SULFIDE** - The physiological effects of hydrogen sulfide are summarized in the table below.

<u>Percent Vol.</u>	<u>Concentration</u> <u>ppm</u>	<u>Physical Effects</u>
0.001	10	Obvious and unpleasant odor.
0.01	100	Kills smell in 3 to 15 minutes; may sting eyes and throat.
0.02	200	Kills smell shortly; stings eyes and throat.
0.05	500	Dizziness; breathing ceases in a few minutes; needs prompt artificial resuscitation.
0.07	700	Unconscious quickly; death will result if not rescued promptly.
0.10	1000	Unconscious at once; followed by death within minutes.

- III. **ACCIDENTAL RELEASE OF HYDROGEN SULFIDE** - The possible release of hydrogen sulfide gas could result from leakage at either wellhead, flow lines, separators or drill string at this drilling location.

- A. In the event of an accidental release, the tool pusher, supervisor or agent of the operator in the vicinity at the time of the discharge will be in charge of all activities on the ground and shall be responsible for the following.
1. Notify all personnel, Company or outside, that are in the area to evacuate as soon as possible. This includes drilling rig crews, roustabout gangs, supervisory personnel, maintenance personnel, sales representatives, farm or ranch hands, visitors and all others that may be in the vicinity.
  2. Notify the County Sheriff's office and the Department of Public Safety, and request their assistance to provide road blocks and direct traffic away from the drilling location. They should also be asked to assist in the evacuation of residents, if any, in affected area.
  3. Alert local Hospital and Fire Department in the event that medical services or ambulance assistance is needed.

4. Call the Drilling Manager in the Midland Office and advise him of the nature and extent of the emergency situation.
  - B. The Drilling Manager or his delegate will notify the appropriate state and federal agencies that the contingency plan has been activated and what level and type of reaction has already been initiated.
  - C. Fasken's Senior Representative or employee on the scene will be in charge and shall initiate measures necessary to bring the gas flow under control securing whatever additional personnel and equipment are necessary to control the flow in the shortest time thereby reducing potential exposure of the general public to hydrogen sulfide.
- IV. **WEATHER CONDITIONS** - Hydrogen sulfide collects in low lying areas during adverse weather conditions such as drizzle, rain, fog, calm winds and snow. These areas should be avoided. Any personnel in such areas should be evacuated and law enforcement personnel should be requested to keep people and traffic from entering. Should moderate winds be blowing hydrogen sulfide from the source of the discharge toward a populated area, residents and other personnel should be evacuated by law enforcement personnel who should then maintain an exclusion perimeter to avoid people from reentering the area until the emergency is over.
- V. **TERMINATION OF EMERGENCY AND FOLLOW-UP PROCEDURES** - Fasken's Senior Representative or employee on the scene, with the cooperation of the Senior Law Enforcement Officer, will declare the emergency terminated when there is no further danger to oilfield personnel or general public. This will occur only after a sufficient number of gas measurements in the vicinity have been made by a qualified technician showing that hydrogen sulfide concentration is below the 10 ppm threshold. In addition, the Operator's Senior Representative or employee will perform the following duties connected with the emergency:
- A. Notify all cooperating law enforcement agencies and emergency medical services that the emergency has been terminated.
  - B. Notify all evacuees that they may return safely to their residences or job sites.
  - C. Make an estimate of damages and/or expenses incurred in the control of the emergency, the evacuation of any persons and the destruction of property, if any, including domestic animals and livestock. He is to make an itemized list of all such damages and/or expenses along with pertinent addresses, and any other specific information pertinent to the situation. He is to deliver this list to the Drilling Manager as soon as possible.
  - D. Under no circumstance are damage estimates, names of affected persons, if any, or any other information pertaining to the incident be given to the press. All inquiries shall be directed to the Drilling Manager in the Midland Office. Public information regarding the emergency will be issued by headquarters office in Midland, Texas.
- VI. Copies of the Contingency Plan are available in Fasken's office in Midland, Texas.
- VII. This plan is subject to approval of the state and federal agencies and shall be revised as required.

**HOBBS OCD**

**SEP 10 2014**

**RECEIVED**

**Fasken Oil and Ranch, Ltd.**

**H2S Contingency Plan**

**Emergency Phone Numbers**

**Laguna "16" State No. 9H**

**Fasken Oil and Ranch, Ltd.**

432 687-1777

**Key Personnel**

Tommy Taylor, Drilling Manager

432 556-2228

Cory Frederick, Drilling Engineer

432-288-0086

Deryl Briles, Drilling Foreman

432 556-4269

Jimmy Davis, Operations Manager

432 557-5668

**Hobbs, Lea County, New Mexico**

Ambulance

911

State Police

911 or 575 392-5580

Sheriff's Office

911 or 575 396-3611

Fire Department

911 or 575 397-9308

Local Emergency Planning Committee

575 393-2870

New Mexico Oil Conservation Division

575 393-6161

**Carlsbad, Eddy County, New Mexico**

Ambulance

911

State Police

911 or 575 885-3138

Sheriff's Department

911 or 575 887-7551

Fire Department

911 or 575 885-3125

Local Emergency Planning Committee

575 887-7553

Bureau of Land Management

575 887-6544

New Mexico Oil Conservation Division (Artesia)

575 748-1283

### **Statewide and National Emergency Numbers**

New Mexico Department of Homeland Security And Emergency Management	505 476-9600
New Mexico State Emergency Operations Center (24 Hour Number)	505 476-9635
National Emergency Response Center	800 424-8802

### **Other Numbers for Emergency Response**

Boots & Coots IWC	800 256-9688 or 281 931-8884
Cudd Pressure Control	432 563-3356
MCH Care Star Flight Service (air ambulance)	432 640-4000
Aerocare (air ambulance)	806 725-1111