

Form C-102
Revised August 1, 2011
Submit one copy to appropriate
District Office

☐ AMENDED REPORT

RECEIVED

WELL LOCATION AND ACREAGE DEDICATION PLAT

¹ API Number 30-025-42164		² Pool Code 14865	³ Pool Name Bone Spring; 2nd, Bone Spring SS
⁴ Property Code	⁵ Property Name BLACK MAMBA 15 STATE COM		⁶ Well Number 5H
⁷ OGRID No. 6137	⁸ Operator Name DEVON ENERGY PRODUCTION COMPANY, L.P.		⁹ Elevation 3704.9

¹⁰ Surface Location

UL or lot no.	Section	Township	Range	Lot Idn	Feet from the	North/South line	Feet from the	East/West line	County
B	15	23 S	33 E		450	NORTH	2320	EAST	LEA

" Bottom Hole Location If Different From Surface

UL or lot no.	Section	Township	Range	Lot Idn	Feet from the	North/South line	Feet from the	East/West line	County
P	15	23 S	33 E		330	SOUTH	660	EAST	LEA

¹² Dedicated Acres 160 ac	¹³ Joint or Infill	¹⁴ Consolidation Code	¹⁵ Order No.
---	-------------------------------	----------------------------------	-------------------------

No allowable will be assigned to this completion until all interests have been consolidated or a non-standard unit has been approved by the division. PP: 450 FNL & 2260 FFL

NW CORNER SEC. 15
 LAT. = 32.3119919°N
 LONG. = 103.5687843°W
 NMSP EAST (FT)
 N = 478077.43
 E = 777535.58

N/4 CORNER SEC. 15
 LAT. = 32.3119892°N
 LONG. = 103.5602426°W
 E = 780174.48

SURFACE LOCATION
 2820'

Project Area

BLACK MAMBA "15" STATE COM #5H
 ELEV. = 3704.9'
 32.3107535°N (NAD83)
 = 103.5591922°W
 NMSP EAST (FT)
 N = 477648.16
 E = 780502.27

ST NM VB-0743

W/4 CORNER SEC. 15
 LAT. = 32.3047319°N
 LONG. = 103.56877°W
 NMSP EAST (FT)
 N = 475436.25
 E = 777556.76

Completion Interval

NOTE: LATITUDE AND LONGITUDE COORDINATES ARE SHOWN USING THE NORTH AMERICAN DATUM OF 1983 (NAD83). LISTED NEW MEXICO STATE PLANE EAST COORDINATES ARE GRID (NAD83). BASIS OF BEARING AND DISTANCES USED ARE: NEW MEXICO STATE PLANE EAST COORDINATES MODIFIED TO THE SURFACE.

ST NM VB-0729

BOTTOM OF HOLE
 LAT. = 32.2983615°N
 LONG. = 103.5538109°W
 NMSP EAST (FT)
 N = 473151.99
 E = 782197.59

S/4 Lease Line
 LAT. = 32.3062205°W
 LONG. = 103.5602205°W
 NMSP EAST (FT)
 N = 472811.39
 E = 780219.44

SE CORNER SEC. 15
 LAT. = 32.3119976°N
 LONG. = 103.5515853°W
 NMSP EAST (FT)
 N = 478175.99
 E = 782018.20

SE CORNER SEC. 16
 LAT. = 32.2974530°N
 LONG. = 103.5510743°W
 NMSP EAST (FT)
 N = 472226.29
 E = 782160.18

BOTTOM OF HOLE
 330'

COMPLETED

500'27.16'E 2646.25 FT
 500'27.16'E 2646.25 FT

500'27.34'W 2641.79 FT
 500'01.18'W 2643.80 FT

S89°36'13"W 2662.27 FT
 S89°40'37"W 2641.31 FT

OCT 03 2014

**SECTION 15, TOWNSHIP 23 SOUTH, RANGE 33 EAST, N.M.P.M.
LEA COUNTY, STATE OF NEW MEXICO**

EL. 3705.7' 700' EL. 3705.1'

NOTE: LATITUDE AND LONGITUDE COORDINATES ARE SHOWN USING THE NORTH AMERICAN DATUM OF 1983 (NAD83). LISTED NEW MEXICO STATE PLANE EAST COORDINATES ARE GRID (NAD83). BASIS OF BEARING AND DISTANCES USED ARE NEW MEXICO STATE PLANE EAST COORDINATES MODIFIED TO THE SURFACE.

1/4 CORNER
BC 1918
SEC. 10
SEC. 15

CALICHE LEASE ROAD

N87°31'33"E

519.99 FT

PROPOSED PAD
7.160± AC.

PROPOSED
TAIPAN "10"
STATE COM #2H

PROPOSED
TAIPAN "10"
STATE COM #4H

PROPOSED
TAIPAN "10"
STATE COM #3H

100' NORTH
OFFSET
EL. 3704.5'

BLACK MAMBA "15" STATE COM #5H
ELEV. = 3704.9'

250' WEST
OFFSET
EL. 3705.8'

150' EAST
OFFSET
EL. 3704.8'

LAT. = 32.3107535°N (NAD83)
LONG. = 103.5591922°W
NMSP EAST (FT)
N = 477848.18
E = 780502.27

150' SOUTH
OFFSET
EL. 3705.3'

N01°02'21"W

610.68 FT

S89°54'23"W

520.08 FT

CL DRAIN



LEGEND
① BLACK MAMBA "15" STATE COM #3H
② BLACK MAMBA "15" STATE COM #4H

EL. 3704.4' 700' EL. 3703.6'

0 10 50 100 200

SCALE 1" = 100'

DIRECTIONS TO LOCATION

FROM INTERSECTION OF HWY 128 & DELAWARE BASIN ROAD GO NORTH ON DELAWARE BASIN ROAD APPROX. 6.0 MILES TO A LEASE ROAD ON LEFT (WEST) OF ROAD. TURN LEFT (WEST) ON LEASE ROAD GO APPROX. 2.4 MILES TO A LEASE ROAD ON RIGHT (NORTH) TURN RIGHT (NORTH) GO APPROX. 1.0 MILE TO LEASE ROAD ON LEFT (WEST) TURN LEFT (WEST) GO APPROX 0.4 MILE TO LOCATIONS ON LEFT (SOUTH) OF ROAD.

DEVON ENERGY PRODUCTION COMPANY, L.P.
BLACK MAMBA "15" STATE COM #5H
LOCATED 450 FT. FROM THE NORTH LINE
AND 2320 FT. FROM THE EAST LINE OF
SECTION 15, TOWNSHIP 23 SOUTH,
RANGE 33 EAST, N.M.P.M.
LEA COUNTY, STATE OF NEW MEXICO

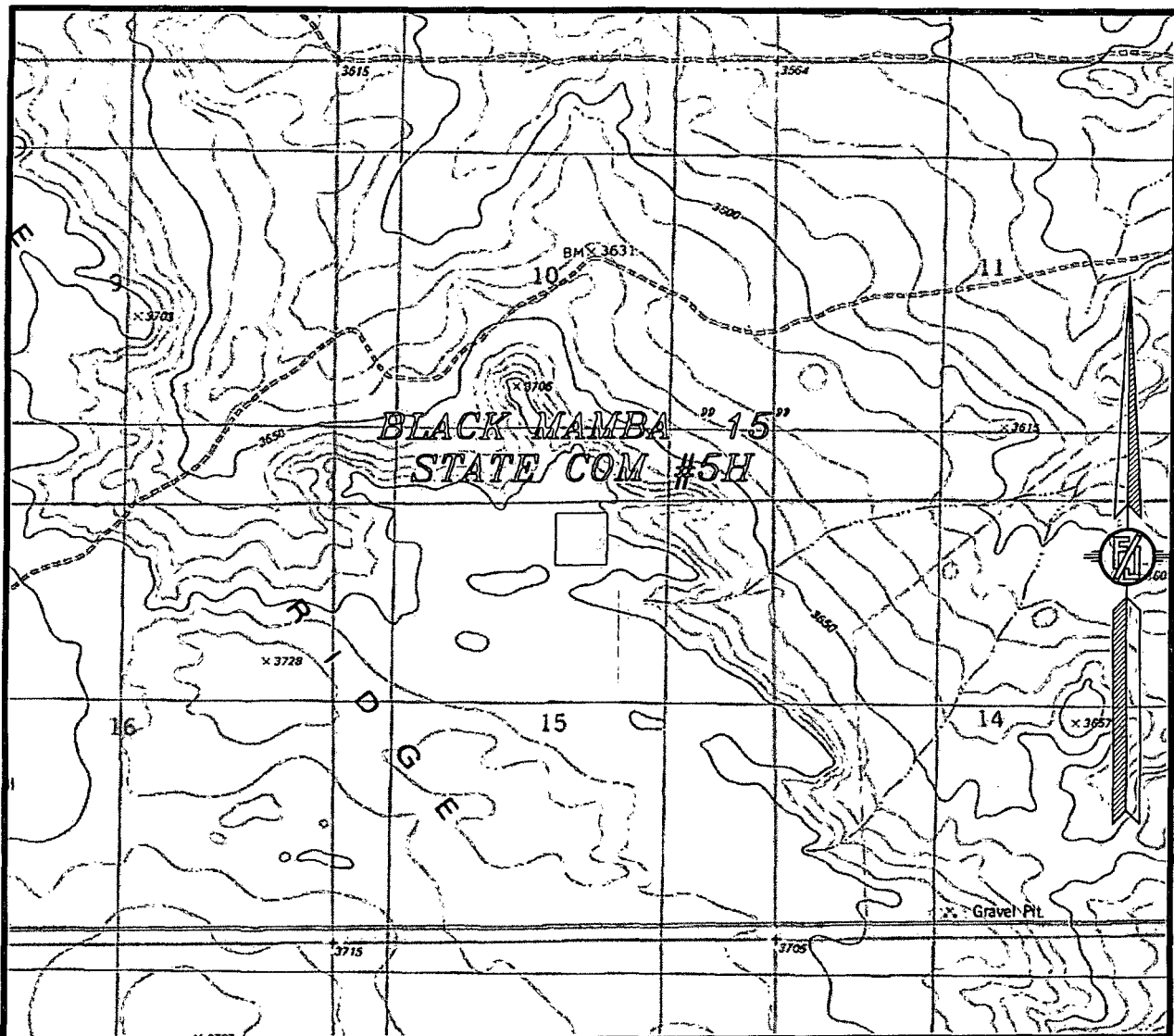
APRIL 3, 2013

SURVEY NO. 1728

MADRON SURVEYING, INC. 301 SOUTH CANAL
(575) 234-3341

CARLSBAD, NEW MEXICO

SECTION 15, TOWNSHIP 23 SOUTH, RANGE 33 EAST, N.M.P.M.
LEA COUNTY, STATE OF NEW MEXICO
LOCATION VERIFICATION MAP



USGS QUAD MAP:
TIP TOP WELLS

NOT TO SCALE

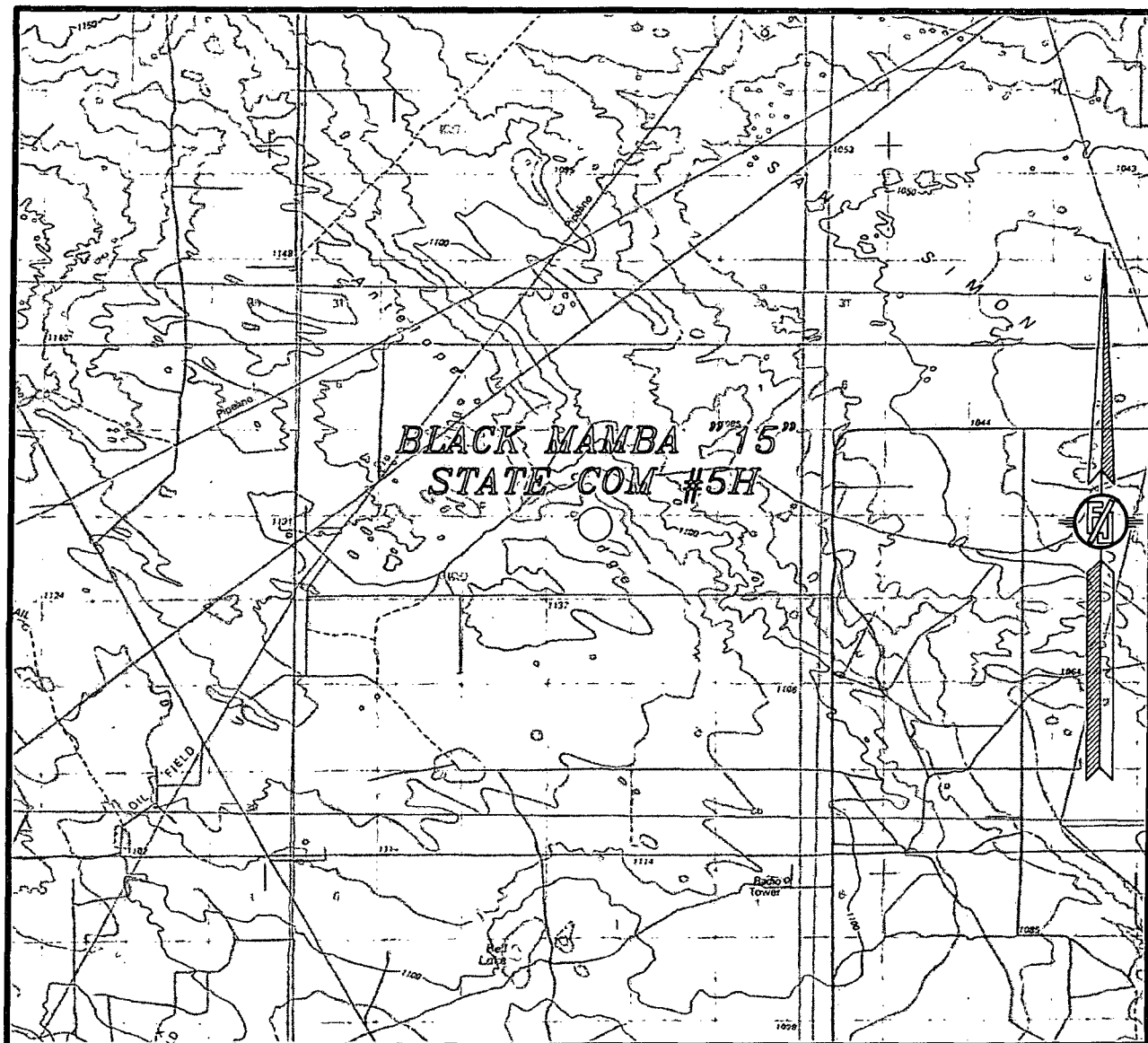
DEVON ENERGY PRODUCTION COMPANY, L.P.
BLACK MAMBA "15" STATE COM #5H
LOCATED 450 FT. FROM THE NORTH LINE
AND 2320 FT. FROM THE EAST LINE OF
SECTION 15, TOWNSHIP 23 SOUTH,
RANGE 33 EAST, N.M.P.M.
LEA COUNTY, STATE OF NEW MEXICO

APRIL 3, 2013

SURVEY NO. 1728

MADRON SURVEYING, INC. 301 SOUTH CANAL (575) 234-3341 CARLSBAD, NEW MEXICO

SECTION 15, TOWNSHIP 23 SOUTH, RANGE 33 EAST, N.M.P.M.
LEA COUNTY, STATE OF NEW MEXICO
VICINITY MAP



NOT TO SCALE

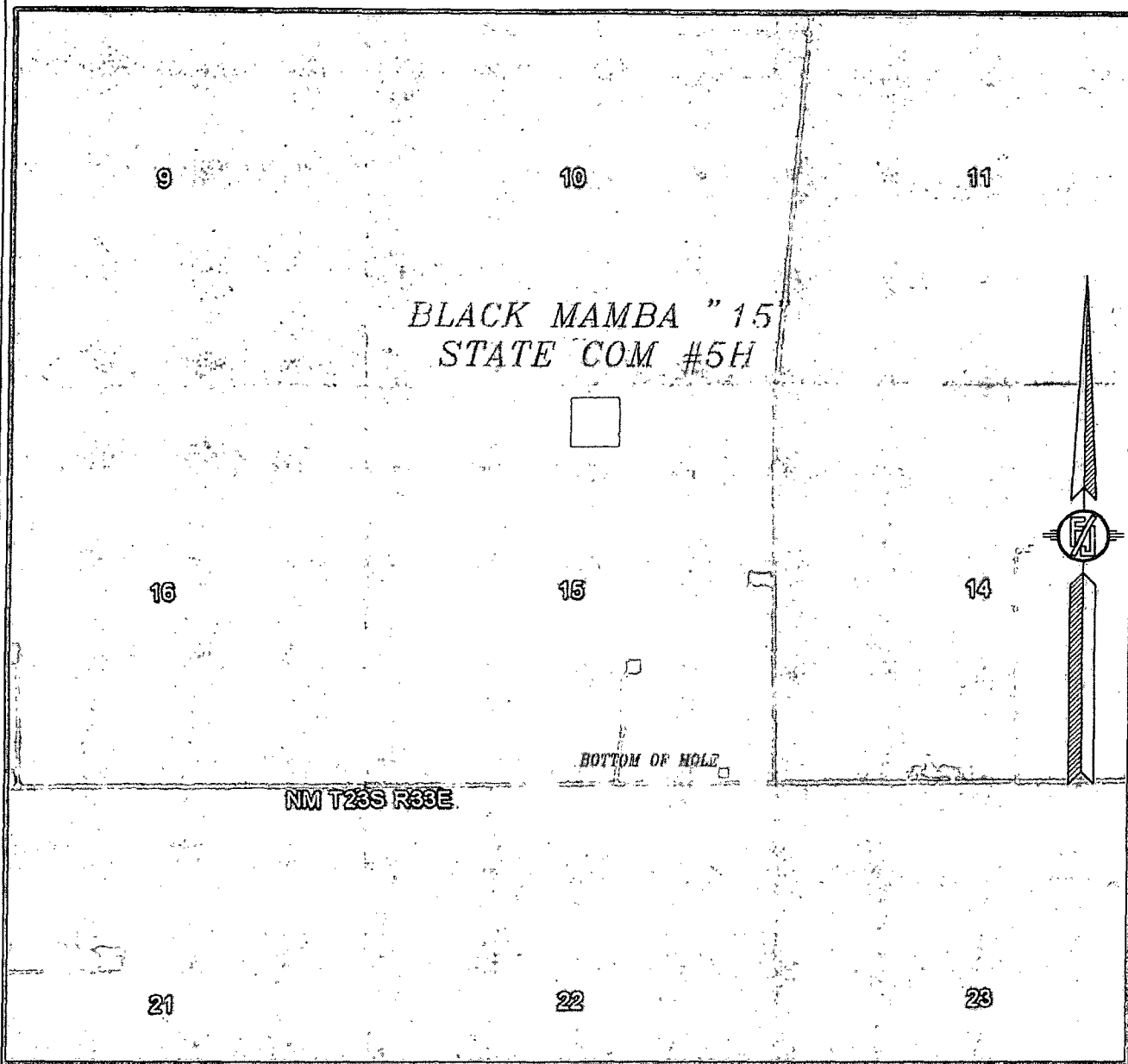
DEVON ENERGY PRODUCTION COMPANY, L.P.
BLACK MAMBA "15" STATE COM #5H
LOCATED 450 FT. FROM THE NORTH LINE
AND 2320 FT. FROM THE EAST LINE OF
SECTION 15, TOWNSHIP 23 SOUTH,
RANGE 33 EAST, N.M.P.M.
LEA COUNTY, STATE OF NEW MEXICO

APRIL 3, 2013

SURVEY NO. 1728

MADRON SURVEYING, INC. 301 SOUTH CANAL CARLSBAD, NEW MEXICO
(575) 234-3341

SECTION 15, TOWNSHIP 23 SOUTH, RANGE 33 EAST, N.M.P.M.
LEA COUNTY, STATE OF NEW MEXICO
AERIAL PHOTO



NOT TO SCALE
AERIAL PHOTO:
GOOGLE EARTH
MARCH 2012

DEVON ENERGY PRODUCTION COMPANY, L.P.
BLACK MAMBA "15" STATE COM #5H
LOCATED 450 FT. FROM THE NORTH LINE
AND 2320 FT. FROM THE EAST LINE OF
SECTION 15, TOWNSHIP 23 SOUTH,
RANGE 33 EAST, N.M.P.M.
LEA COUNTY, STATE OF NEW MEXICO

APRIL 3, 2013

SURVEY NO. 1728

MADRON SURVEYING, INC. 301 SOUTH CANAL CARLSBAD, NEW MEXICO
(575) 234-3341