

OCT 14 2014

RECEIVED

- 1 All Company and Contract personnel admitted on location must be trained by a qualified H₂S safety instructor to the following:
 - A. Characteristics of H₂S
 - B. Physical effects and hazards
 - C. Principal and operation of H₂S detectors, warning system and briefing areas.
 - D. Evacuation procedure, routes and first aid.
 - E. Proper use of safety equipment & life support systems
 - F. Essential personnel meeting Medical Evaluation criteria will receive additional training on the proper use of 30 minute pressure demand air packs.
- 2 H₂S Detection and Alarm Systems:
 - A. H₂S sensors/detectors to be located on the drilling rig floor, in the base of the sub structure/cellar area, on the mud pits in the shale shaker area. Additional H₂S detectors may be placed as deemed necessary.
 - B. An audio alarm system will be installed on the derrick floor and in the top doghouse.
- 3 Windsock and/or wind streamers:
 - A. Windsock at mudpit area should be high enough to be visible.
 - B. Windsock on the rig floor and / or top doghouse should be high enough to be visible.
- 4 Condition Flags and Signs
 - A. Warning sign on access road to location.
 - B. Flags to be displayed on sign at entrance to location. Green flag indicates normal safe condition. Yellow flag indicates potential pressure and danger. Red flag indicates danger (H₂S present in dangerous concentration). Only H₂S trained and certified personnel admitted to location.
- 5 Well control equipment:
 - A. See exhibit "E-1"
- 6 Communication:
 - A. While working under masks chalkboards will be used for communication.
 - B. Hand signals will be used where chalk board is inappropriate.
 - C. Two way radio will be used to communicate off location in case of emergency help is required. In most cases cellular telephones will be available at most drilling foreman's trailer or living quarters.
- 7 Drillstem Testing:

No DSTs or cores are planned at this time.
- 8 Drilling contractor supervisor will be required to be familiar with the effects H₂S has on tubular goods and other mechanical equipment.
- 9 If H₂S is encountered, mud system will be altered if necessary to maintain control of formation. A mud gas separator will be brought into service along with H₂S scavengers if necessary.

OCT 16 2014

H₂S Contingency Plan
Colibri Federal 26H
Cimarex Energy Co.
UL: A, Sec. 10, 23S, 32E
Lea Co., NM

Emergency Procedures

In the event of a release of gas containing H₂S, the first responder(s) must:

- « Isolate the area and prevent entry by other persons into the 100 ppm ROE.
- « Evacuate any public places encompassed by the 100 ppm ROE.
- « Be equipped with H₂S monitors and air packs in order to control the release.
- « Use the "buddy system" to ensure no injuries occur during the response.
- « Take precautions to avoid personal injury during this operation.
- « Contact operator and/or local officials to aid in operation. See list of phone numbers attached.
- « Have received training in the:
 - Detection of H₂S, and
 - Measures for protection against the gas,
 - Equipment used for protection and emergency response.

Ignition of Gas Source

Should control of the well be considered lost and ignition considered, take care to protect against exposure to Sulfur Dioxide (SO₂). Intentional ignition must be coordinated with the NMOCD and local officials. Additionally, the NM State Police may become involved. NM State Police shall be the Incident Command on scene of any major release. Take care to protect downwind whenever there is an ignition of the gas.

Characteristics of H₂S and SO₂

Please see attached International Chemical Safety Cards.

Contacting Authorities

Cimarex Energy Co. of Colorado's personnel must liaise with local and state agencies to ensure a proper response to a major release. Additionally, the OCD must be notified of the release as soon as possible but no later than 4 hours. Agencies will ask for information such as type and volume of release, wind direction, location of release, etc. Be prepared with all information available including directions to site. The following call list of essential and potential responders has been prepared for use during a release. Cimarex Energy Co. of Colorado's response must be in coordination with the State of New Mexico's "Hazardous Materials Emergency Response Plan" (HMER).

H₂S Contingency Plan Emergency Contacts

Colibri Federal 26H

Cimarex Energy Co.

UL: A, Sec. 10, 23S, 32E

Lea Co., NM

Company Office

Cimarex Energy Co. of Colorado	800-969-4789
Co. Office and After-Hours Menu	

Key Personnel

Name	Title	Office	Mobile
Larry Seigrist	Drilling Manager	432-620-1934	580-243-8485
Doug McQuitty	Drilling Superintendent	432-620-1933	806-640-2605
Scott Lucas	Drilling Superintendent	432-620-1989	432-894-5572
Roy Shirley	Construction Superintendent		432-634-2136

Artesia

Ambulance	911
State Police	575-746-2703
City Police	575-746-2703
Sheriff's Office	575-746-9888
Fire Department	575-746-2701
Local Emergency Planning Committee	575-746-2122
New Mexico Oil Conservation Division	575-748-1283

Carlsbad

Ambulance	911
State Police	575-885-3137
City Police	575-885-2111
Sheriff's Office	575-887-7551
Fire Department	575-887-3798
Local Emergency Planning Committee	575-887-6544
US Bureau of Land Management	575-887-6544

Santa Fe

New Mexico Emergency Response Commission (Santa Fe)	505-476-9600
New Mexico Emergency Response Commission (Santa Fe) 24 Hrs	505-827-9126
New Mexico State Emergency Operations Center	505-476-9635

National

National Emergency Response Center (Washington, D.C.)	800-424-8802
---	--------------

Medical

Flight for Life - 4000 24th St.; Lubbock, TX	806-743-9911
Aerocare - R3, Box 49F; Lubbock, TX	806-747-8923
Med Flight Air Amb - 2301 Yale Blvd S.E., #D3; Albuquerque, NM	505-842-4433
SB Air Med Service - 2505 Clark Carr Loop S.E.; Albuquerque, NM	505-842-4949

Other

Boots & Coots IWC	800-256-9688	or	281-931-8884
Cudd Pressure Control	432-699-0139	or	432-563-3356
Halliburton	575-746-2757		
B.J. Services	575-746-3569		

Reclamation after drilling second well

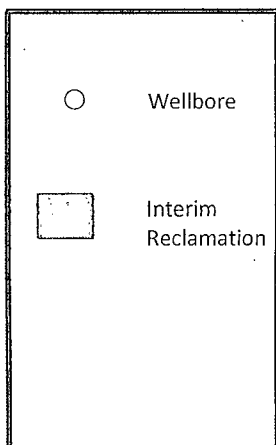
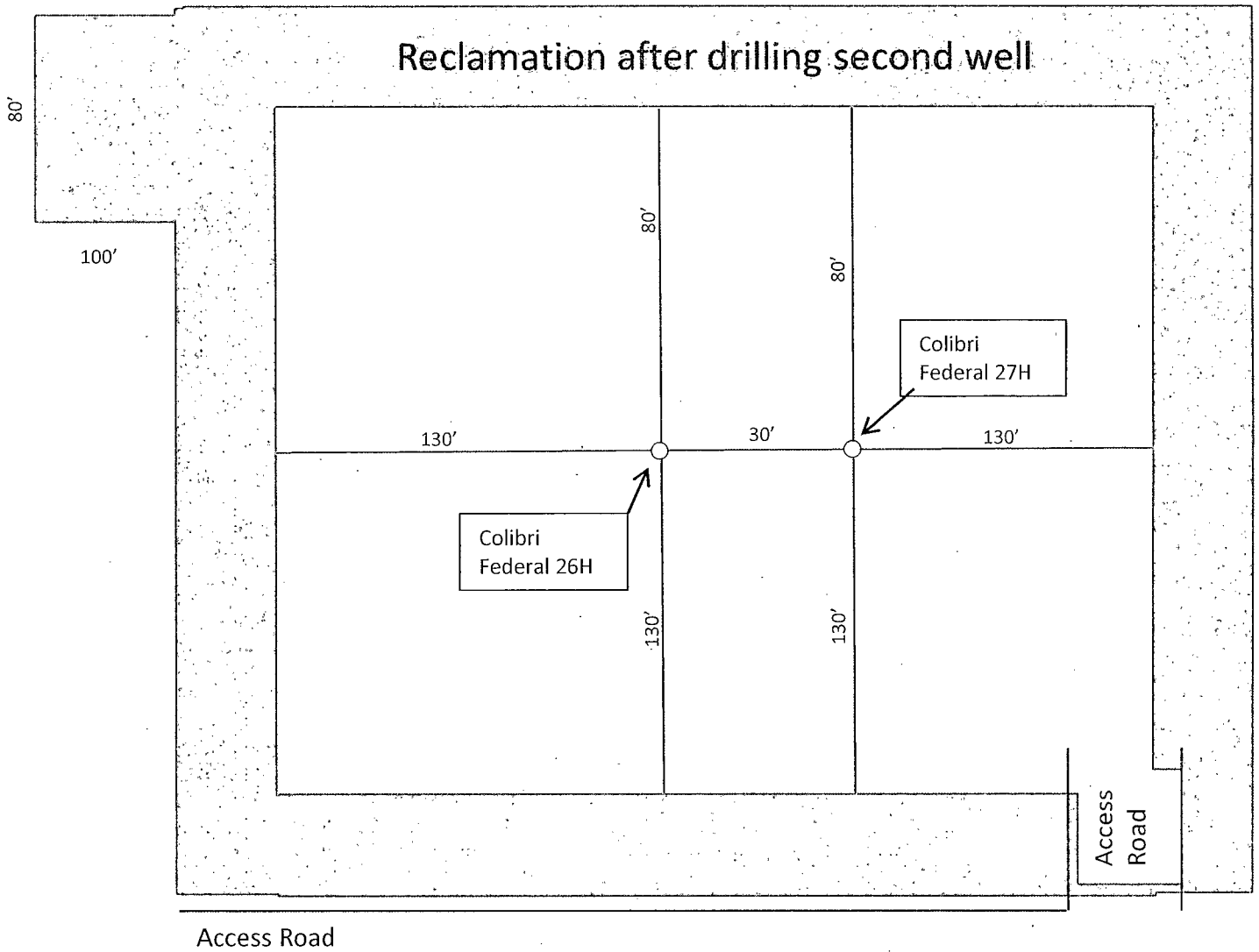


Exhibit D-1
 Interim Reclamation Diagram
Colibri Federal 26H
 Cimarex Energy Co.
 10-23S-32E
 SHL 170 FNL & 895 FEL
 BHL 330 FSL & 1330FEL
 Lea County, NM

Surface Use Plan
Colibri Federal #26H
Cimarex Energy Co.
UL: A, Sec. 10, 23S, 32E
LEA Co., NM

The following surface use plan of operations will be followed and carried out once the APD is approved. No other disturbance will be created other than what is submitted in this surface use plan without approval. If any other disturbance is needed after the APD is approved, a BLM approved sundry notice or right of way application will be submitted for approval prior to any new surface disturbance.

1. Existing Roads:

Area access roads and general road maps:

- Exhibit B: General Highway Map
- Exhibit C: USGS Topographic Map
- Exhibit C-1: Public Access Road Map
- Exhibit C-2: Existing and proposed access roads plat

The maximum width of the driving surface will be 14'. The road will be crowned and ditched with a 2% slope from the tip of the crown to the edge of the driving surface. The ditches will be 1' deep with 3:1 slopes. The driving surface will be made of 6" rolled and compacted caliche.

Existing access road route to the proposed project is depicted on the public access point map if applicable. Improvements to the driving surface will be done where necessary. No new surface disturbance will be done, unless otherwise noted in the New or Reconstructed Access Roads section of the surface use plan.

BEGINNING AT THE INTERSECTION OF JAL HIGHWAY / HWY 128 AND AN EXISTING ROAD TO THE NORTHEAST LOCATED IN THE SE 1/4 OF SECTION 1, T24S, R31E, N.M.P. M. PROCEED IN A NORTHEASTERLY DIRECTION APPROXIMATELY 5.6 MILES TO THE JUNCTION OF THIS ROAD AND AN EXISTING ROAD TO THE NORTHWEST; TURN LEFT AND PROCEED IN A NORTHWESTERLY DIRECTION APPROXIMATELY 1.4 MILES TO THE JUNCTION OF THIS ROAD AND AN EXISTING ROAD TO THE NORTHEAST; TURN RIGHT AND PROCEED IN A NORTHEASTERLY, THEN NORTHERLY DIRECTION APPROXIMATELY 1.5 MILES TO THE BEGINNING OF THE PROPOSED ACCESS FOR THE COLIBRI FEDERAL #20H TO THE NORTHWEST; FOLLOW ROAD FLAGS IN A NORTHWESTERLY, THEN WESTERLY DIRECTION APPROXIMATELY 3,827' TO THE BEGINNING OF THE PROPOSED ACCESS ROAD TO THE NORTH; FOLLOW ROAD FLAGS IN A NORTHERLY DIRECTION APPROXIMATELY 15' TO THE PROPOSED LOCATION.

If existing roads are used, the operator will improve or maintain existing roads in a condition the same as or better than before the operations began. The operator will repair pot holes, etc. All existing structures on the entire access route such as cattleguards, other range improvement projects, culverts, etc. will be properly repaired or replaced if they are damaged or have deteriorated beyond practical use.

The operator will prevent and abate fugitive dust as needed, whether created by vehicular traffic, equipment operations, or other events. The operator will obtain written BLM approval prior to the application of surfactants, binding agents, or other dust suppression chemicals on the roadways.

2. New or Reconstructed Access Roads:

A new road will be constructed for this project.

Cimarex Energy plans to construct 4301.31' of new on-lease access road to service the well. The planned access road does not cross lease boundaries, a right of way grant will not be acquired from the BLM.

The maximum width of the driving surface will be 14'. The road will be crowned and ditched with a 2% slope from the tip of the crown to the edge of the driving surface. The ditches will be 1' deep with 3:1 slopes. The driving surface will be made of 6" rolled and compacted caliche.

Proposed and existing access road route to the proposed wellsite is depicted on Exhibit C-2. Improvements to the driving surface will be done where necessary. No new surface disturbance will be done without prior approval from the BLM.

The operator will prevent and abate fugitive dust as needed, whether created by vehicular traffic, equipment operations, or other events.

3. Planned Electric Line:

No new electric lines are planned.

4. Location of Existing Well in a One-Mile Radius -Exhibit A:

- Water Wells - None known
- Disposal Wells - None known
- Drilling Wells - None known
- Producing Wells - As shown on Exhibit A
- Abandoned Wells - As shown on Exhibit A

NOV 10 2014

OCT 14 2014

RECEIVED

Surface Use Plan
Colibri Federal #26H
Cimarex Energy Co.
UL: A, Sec. 10, 23S, 32E
LEA Co., NM

5. Location of Existing or Proposed Production Facilities:

If on completion this well is a producer, a tank battery will be used and the necessary production equipment will be installed and production will be sent to the Colibri Federal #20H. Cimarex Energy proposes to install two 4 inch buried HP polylines down existing lease road to the Colibri Federal #20H battery.

Cimarex Energy plans to construct on lease flowlines to service the well.

Specifications of Polyline: 1 HP polyline for oil, gas, and water production. 1 HP polyline for gas lift.

Both lines will be buried 25'-35' North of the access road.

Length: 3720'

MAOP: 1500 psi. Anticipated working pressure: 200-300 psi.

Allocation will be based on well test. Route is on lease, please see Exhibit G. Any changes to on lease route will be submitted via sundry notice. If route is off lease, a right of way will be submitted to the BLM for approval.

6. Location and Type of Water Supply:

Water will be purchased locally from a commercial source and trucked over the access roads.

7. Source of Construction Material:

If possible, native caliche will be obtained from the excavation of drill site. The primary way of obtaining caliche will be by "turning over" the location. This means caliche will be obtained from the actual well site. A caliche permit will be obtained from BLM prior to pushing up any caliche. 2400 cu yds is the max amount of caliche needed for pad and roads. Amount will vary for each pad. The procedure below has been approved by BLM personnel:

- The top 6 inches of topsoil is pushed off and stockpiled along the side of the location.
- An approximate 120' x 120' area is used within the proposed well site to remove caliche.
- Subsoil is removed and piled alongside the 120' by 120' area within the pad site.
- When caliche is found, material will be stockpiled within the pad site to build the location and road.
- Then subsoil is pushed back in the hole and caliche is spread accordingly across entire location and road.
- Once well is drilled, the stockpiled top soil will be used for interim reclamation and spread along areas where caliche is picked up and the location size is reduced. Neither caliche nor subsoil will be stockpiled outside of the well pad. Topsoil will be stockpiled along the edge of the pad as depicted in Exhibit D – Rig Layout Diagram.

In the event that no caliche is found onsite, caliche will be hauled in from a BLM-approved caliche pit.

8. Methods of Handling Waste

- Drilling fluids, produced oil, and water from the well during drilling and completion operations will be stored safely and disposed of properly in a NMOCD approved disposal facility.
- Garbage and trash produced during drilling and completion operations will be collected in a trash container and disposed of properly at a state approved disposal facility. All trash on and around well site will be collected for disposal.
- Human waste and grey water will be properly contained and disposed of properly at a state approved disposal site.
- After drilling and completion operations, trash, chemicals, salts, frac sand and other waste will be removed and disposed of properly at a state approved disposal site.
- The well will be drilled utilizing a closed loop system. Drill cuttings will be properly disposed of into steel tanks and taken to an NMOCD approved disposal facility.

9. Ancillary Facilities:

No camps or airstrips to be constructed.

10. Well Site Layout:

- Exhibit D: Rig Layout
- Exhibit D-2: Well Site layout plat
- Mud pits in the closed circulation system will be steel pits and the cuttings will be stored in steel containment pits.
- Cuttings will be stored in steel pits until they are hauled to a state-approved disposal facility.
- If the well is a producer, those areas of the location not essential to production facilities will be reclaimed and seeded per BLM requirements. Exhibit D-1: Interim Reclamation Diagram.

Surface Use Plan
Colibri Federal #26H
Cimarex Energy Co.
UL: A, Sec. 10, 23S, 32E
LEA Co., NM

11. Plans for Restoration of Surface:

Rehabilitation of the location will start in a timely manner after all drilling operations cease. The type of reclamation will depend on whether the well is a producer or a dry hole.

In areas planned for interim and final reclamation, surfacing materials will be removed and returned to a mineral pit or recycled to repair or build roads and well pads.

Drainage systems, if any, will be reshaped to the original configuration with provisions made to alleviate erosion. These may need to be modified in certain circumstances to prevent inundation of the location's pad and surface facilities. After the area has been shaped and contoured, topsoil from the spoil pile will be placed over the disturbed area to the extent possible. Revegetation procedures will comply with BLM standards.

If the well is a dry hole, the pad and road area will be recountoured to match the existing terrain. Topsoil will be spread to the extent possible. Revegetation will comply with BLM standards.

Should the well be a producer, those areas of the location not essential to production facilities and operations will be reclaimed and seeded per BLM requirements. Exhibit D-1 illustrates the proposed Interim Reclamation.

12. Other Information:

- Topography consists of a sloping plane with loose tan sands. Vegetation is mainly yucca, mesquite and shin oak.
- The wellsite is on surface owned by Bureau of Land Management. The land is used mainly for farming, cattle ranching, recreational use, and oil and gas production.
- *In lieu of an archaeological survey report, Cimarex will be submitting an MOA application for this well pad and access road since they are within the MOA boundary.*
- There are no known dwellings within 1½ miles of this location.

13. On Site Notes and Information:

Onsite with Barry Hunt & BLM (Jesse Rice) 10/29/13: Moved 160ft. north to reduce cut to the south and allow for road on south. V-Door East. Frac pad Northwest corner (West). Tops oil West. Interim reclamation: all sides. Pipeline, west, to the battery at the #20. Access road from the Southeast corner, east, to the southwest corner of the Urraca fed #20 well.