

OCT 21 2014

District I
1625 N. French Dr., Hobbs, NM 88240
Phone: (575) 393-6161 Fax: (575) 393-0720

District II
811 S. First St., Artesia, NM 88210
Phone: (575) 748-1283 Fax: (575) 748-9720

District III
1000 Rio Brazos Road, Aztec, NM 87410
Phone: (505) 334-6178 Fax: (505) 334-6170

District IV
1220 S. St. Francis Dr., Santa Fe, NM 87505
Phone: (505) 476-3460 Fax: (505) 476-3462

State of New Mexico
Energy, Minerals & Natural Resources Department **RECEIVED**
OIL CONSERVATION DIVISION
1220 South St. Francis Dr.
Santa Fe, NM 87505

Form C-102

Revised August 1, 2011

Submit one copy to appropriate

District Office

☐ AMENDED REPORT

WELL LOCATION AND ACREAGE DEDICATION PLAT

¹ API Number 30-025-42199	² Pool Code 24250	³ Pool Name FEATHERSTONE; BONE SPRING
⁴ Property Code 313809	⁵ Property Name SAWYER 22 FEE	⁶ Well Number 1H
⁷ OGRID No. 6137	⁸ Operator Name DEVON ENERGY PRODUCTION COMPANY, L.P.	⁹ Elevation 3684.1

¹⁰ Surface Location

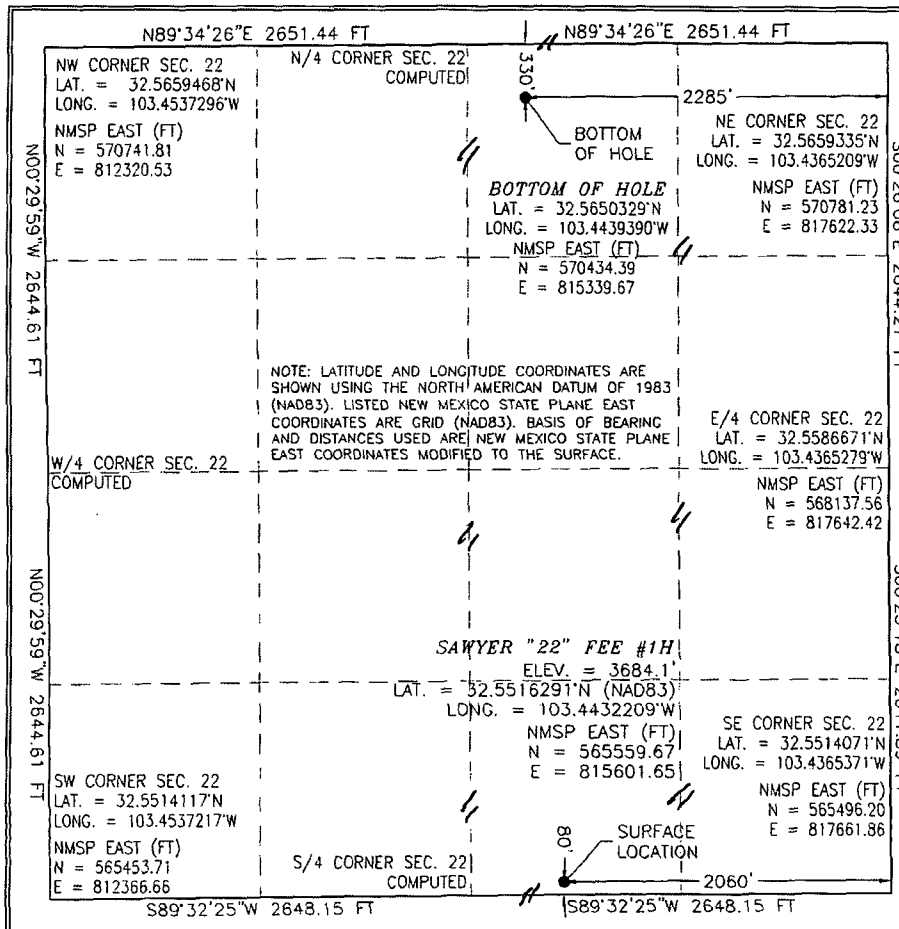
UL or lot no.	Section	Township	Range	Lot Idn	Feet from the	North/South line	Feet from the	East/West line	County
O	22	20 S	35 E		80	SOUTH	2060	EAST	LEA

¹¹ Bottom Hole Location If Different From Surface

UL or lot no.	Section	Township	Range	Lot Idn	Feet from the	North/South line	Feet from the	East/West line	County
B	22	20 S	35 E		330	NORTH	2285	EAST	LEA

¹² Dedicated Acres 160	¹³ Joint or Infill	¹⁴ Consolidation Code	¹⁵ Order No.
---	-------------------------------	----------------------------------	-------------------------

No allowable will be assigned to this completion until all interests have been consolidated or a non-standard unit has been approved by the division.

¹⁷ OPERATOR CERTIFICATION

I hereby certify that the information contained herein is true and complete to the best of my knowledge and belief, and that this organization either owns a working interest or unleased mineral interest in the land including the proposed bottom hole location or has a right to drill this well at this location pursuant to a contract with an owner of such a mineral or working interest, or to a voluntary pooling agreement or a compulsory pooling order heretofore entered by the division.

Signature: *David H. Cook* Date: 10/20/2014

Printed Name: David H. Cook Regulatory Specialist

E-mail Address: david.cook@dmn.com

¹⁸ SURVEYOR CERTIFICATION

I hereby certify that the well location shown on this plat was plotted from field notes of actual surveys made by me or under my supervision, and that the same is true and correct to the best of my belief.

JULY 22, 2013

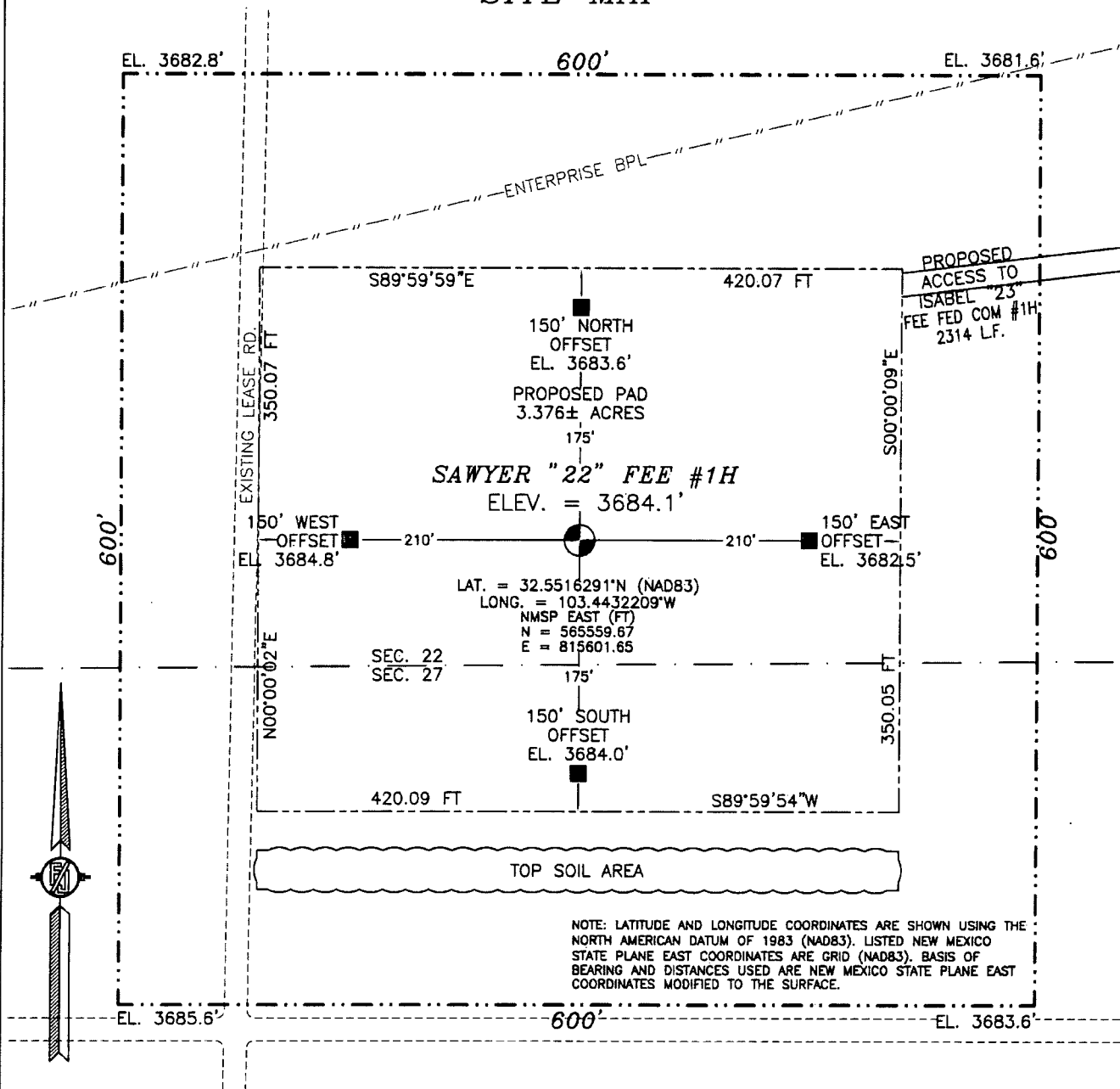
Date of Survey

Signature and Seal of Professional Surveyor: *FILMON F. JARAMILLO*
Certificate Number: FILMON F. JARAMILLO, PLS 12797
SURVEY NO. 1983

PP: 580 FSL & 2285 FEL

OCT 27 2014

SECTION 22, TOWNSHIP 20 SOUTH, RANGE 35 EAST, N.M.P.M.
LEA COUNTY, STATE OF NEW MEXICO
SITE MAP



010 50 100 200

SCALE 1" = 100'

DIRECTIONS TO LOCATION

FROM MILE MARKER 19 ON STATE HWY 178 GOING EAST GO 0.3 MILES TO PAVED ROAD ON LEFT (NORTH) PEARSON ROAD TURN NORTH GO APPROX. 1.2 MILES PAVEMENT END GO APPROX. 0.3 MILES ROAD TURNS LEFT (NORTHEAST) FOLLOW ROAD GO APPROX. 4.0 MILES TO "Y" INTERSECTION STAY LEFT GO APPROX. 2.7 MILES TO "Y" INTERSECTION STAY LEFT GO APPROX. 0.4 MILES ROAD TURNS LEFT (WEST) GO WEST APPROX. 0.55 MILES TO LEASE ROAD LEFT (SOUTH) TURN SOUTH GO APPROX. 0.81 MILES LOCATION ON LEFT (EAST) 200 FT.

DEVON ENERGY PRODUCTION COMPANY, L.P.

SAWYER "22" FEE #1H

LOCATED 80 FT. FROM THE SOUTH LINE
AND 2060 FT. FROM THE EAST LINE OF
SECTION 22, TOWNSHIP 20 SOUTH,
RANGE 35 EAST, N.M.P.M.

LEA COUNTY, STATE OF NEW MEXICO

JULY 22, 2013

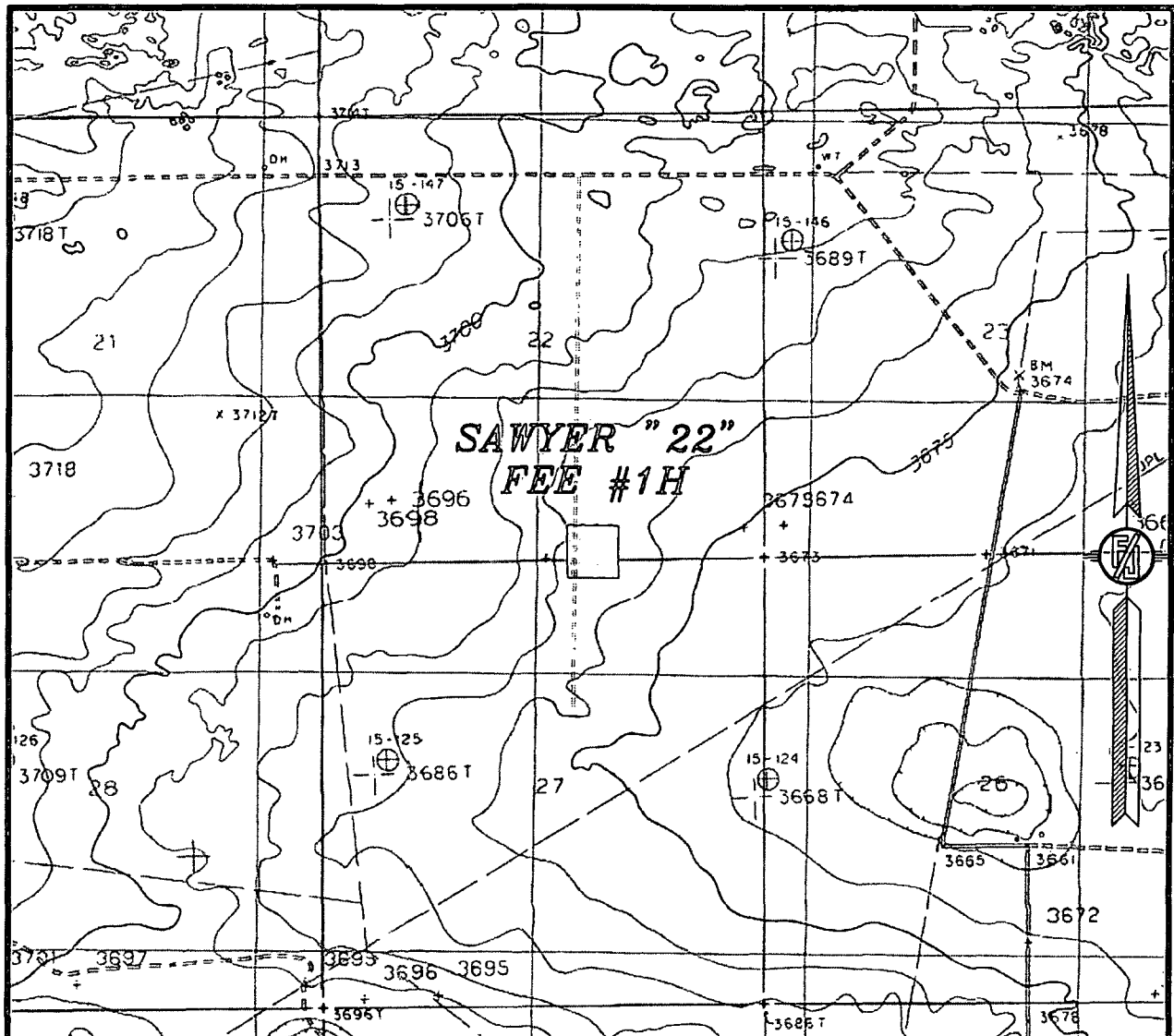
SURVEY NO. 1983

MADRON SURVEYING, INC.

301 SOUTH CANAL
(575) 234-3341

CARLSBAD, NEW MEXICO

SECTION 22, TOWNSHIP 20 SOUTH, RANGE 35 EAST, N.M.P.M.
LEA COUNTY, STATE OF NEW MEXICO
LOCATION VERIFICATION MAP



USGS QUAD MAP:
MONUMENT SW

NOT TO SCALE

DEVON ENERGY PRODUCTION COMPANY, L.P.

SAWYER "22" FEE #1H

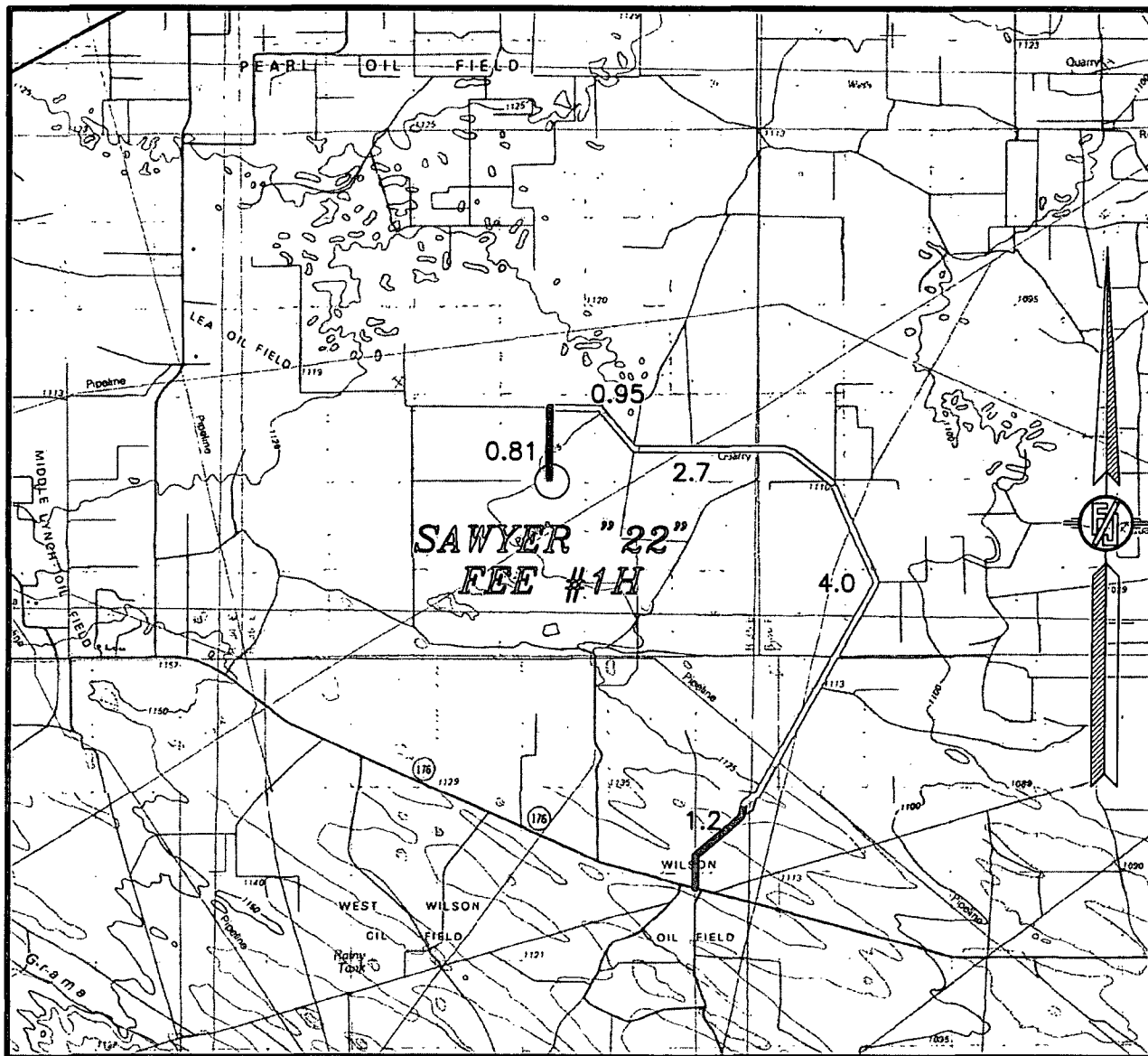
LOCATED 80 FT. FROM THE SOUTH LINE
AND 2060 FT. FROM THE EAST LINE OF
SECTION 22, TOWNSHIP 20 SOUTH,
RANGE 35 EAST, N.M.P.M.
LEA COUNTY, STATE OF NEW MEXICO

JULY 22, 2013

SURVEY NO. 1983

MADRON SURVEYING, INC. 301 SOUTH CANAL (575) 234-3341 CARLSBAD, NEW MEXICO

SECTION 22, TOWNSHIP 20 SOUTH, RANGE 35 EAST, N.M.P.M.
LEA COUNTY, STATE OF NEW MEXICO
VICINITY MAP



NOT TO SCALE

DIRECTIONS TO LOCATION

FROM MILE MARKER 19 ON STATE HWY 176 GOING EAST GO 0.3 MILES TO PAVED ROAD ON LEFT (NORTH) PEARSON ROAD TURN NORTH GO APPROX. 1.2 MILES PAVEMENT END GO APPROX. 0.3 MILES ROAD TURNS LEFT (NORTHEAST) FOLLOW ROAD GO APPROX. 4.0 MILES TO "Y" INTERSECTION STAY LEFT GO APPROX. 2.7 MILES TO "Y" INTERSECTION STAY LEFT GO APPROX. 0.4 MILES ROAD TURNS LEFT (WEST) GO WEST APPROX. 0.55 MILES TO LEASE ROAD LEFT (SOUTH) TURN SOUTH GO APPROX. 0.81 MILES LOCATION ON LEFT (EAST) 200 FT.

DEVON ENERGY PRODUCTION COMPANY, L.P.

SAWYER "22" FEE #1H

LOCATED 80 FT. FROM THE SOUTH LINE
AND 2060 FT. FROM THE EAST LINE OF
SECTION 22, TOWNSHIP 20 SOUTH,
RANGE 35 EAST, N.M.P.M.
LEA COUNTY, STATE OF NEW MEXICO

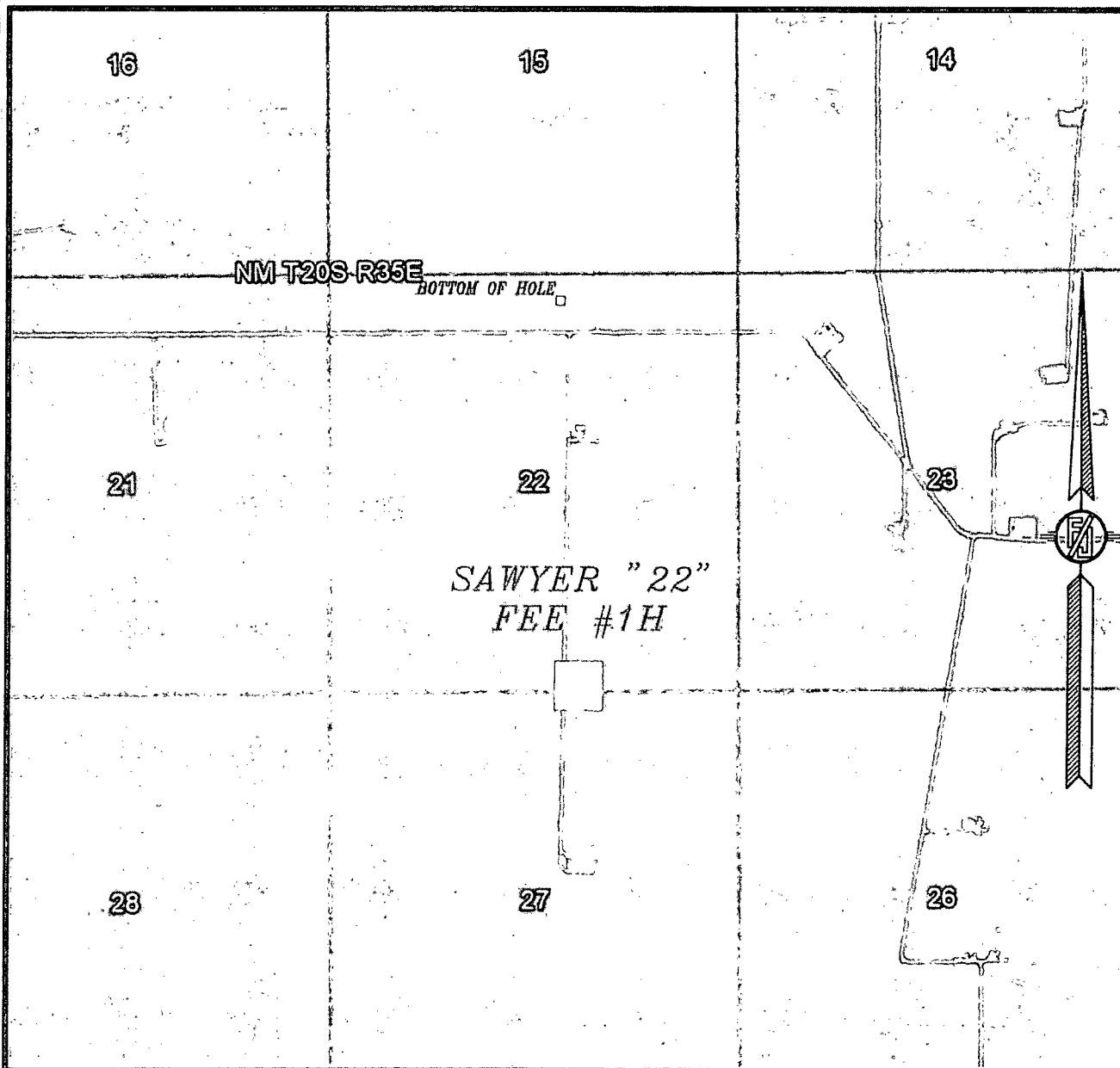
JULY 22, 2013

SURVEY NO. 1983

MADRON SURVEYING, INC. 301 SOUTH CANAL
(575) 234-3341

CARLSBAD, NEW MEXICO

SECTION 22, TOWNSHIP 20 SOUTH, RANGE 35 EAST, N.M.P.M.
LEA COUNTY, STATE OF NEW MEXICO
AERIAL PHOTO



NOT TO SCALE
AERIAL PHOTO:
GOOGLE EARTH
MARCH 2012

DEVON ENERGY PRODUCTION COMPANY, L.P.

SAWYER "22" FEE #1H

LOCATED 80 FT. FROM THE SOUTH LINE
AND 2060 FT. FROM THE EAST LINE OF
SECTION 22, TOWNSHIP 20 SOUTH,
RANGE 35 EAST, N.M.P.M.
LEA COUNTY, STATE OF NEW MEXICO

JULY 22, 2013

SURVEY NO. 1983

MADRON SURVEYING, INC. 301 SOUTH CANAL (575) 234-3341 CARLSBAD, NEW MEXICO