

District I  
1625 N. French Dr., Hobbs, NM 88240  
Phone: (575) 393-6161 Fax: (575) 393-0720  
District II  
311 S. First St., Artesia, NM 88210  
Phone: (575) 748-1283 Fax: (575) 748-9720  
District III  
1000 Rio Brazos Road, Aztec, NM 87410  
Phone: (505) 334-6178 Fax: (505) 334-6170  
District IV  
1220 S. St. Francis Dr., Santa Fe, NM 87505  
Phone: (505) 476-3460 Fax: (505) 476-3462

State of New Mexico  
Energy, Minerals & Natural Resources Department  
OIL CONSERVATION DIVISION  
1220 South St. Francis Dr.  
Santa Fe, NM 87505

Form C-102  
Revised August 1, 2011  
Submit one copy to appropriate  
District Office

☐ AMENDED REPORT

WELL LOCATION AND ACREAGE DEDICATION PLAT

<sup>1</sup> API Number <b>30-025-41429</b>	<sup>2</sup> Pool Code <b>14865</b>	<sup>3</sup> Pool Name <b>CRUZ; BONE SPRING</b>
<sup>4</sup> Property Code <b>40147</b>	<sup>5</sup> Property Name <b>JAGUAR 18 STATE</b>	<sup>6</sup> Well Number <b>3H</b>
<sup>7</sup> OGRID No. <b>270329</b>	<sup>8</sup> Operator Name <b>ENDURANCE RESOURCES, LLC</b>	<sup>9</sup> Elevation <b>3700.3</b>

<sup>10</sup> Surface Location									
UL or lot no.	Section	Township	Range	Lot Idn	Feet from the	North/South line	Feet from the	East/West line	County
<b>O</b>	<b>18</b>	<b>23 S</b>	<b>33 E</b>		<b>330</b>	<b>SOUTH</b>	<b>2265</b>	<b>EAST</b>	<b>LEA</b>

<sup>11</sup> Bottom Hole Location If Different From Surface									
UL or lot no.	Section	Township	Range	Lot Idn	Feet from the	North/South line	Feet from the	East/West line	County
<b>B</b>	<b>18</b>	<b>23 S</b>	<b>33 E</b>		<b>330</b>	<b>NORTH</b>	<b>1980</b>	<b>EAST</b>	<b>LEA</b>

<sup>12</sup> Dedicated Acres <b>160</b>	<sup>13</sup> Joint or Infill	<sup>14</sup> Consolidation Code	<sup>15</sup> Order No.
---	-------------------------------	----------------------------------	-------------------------

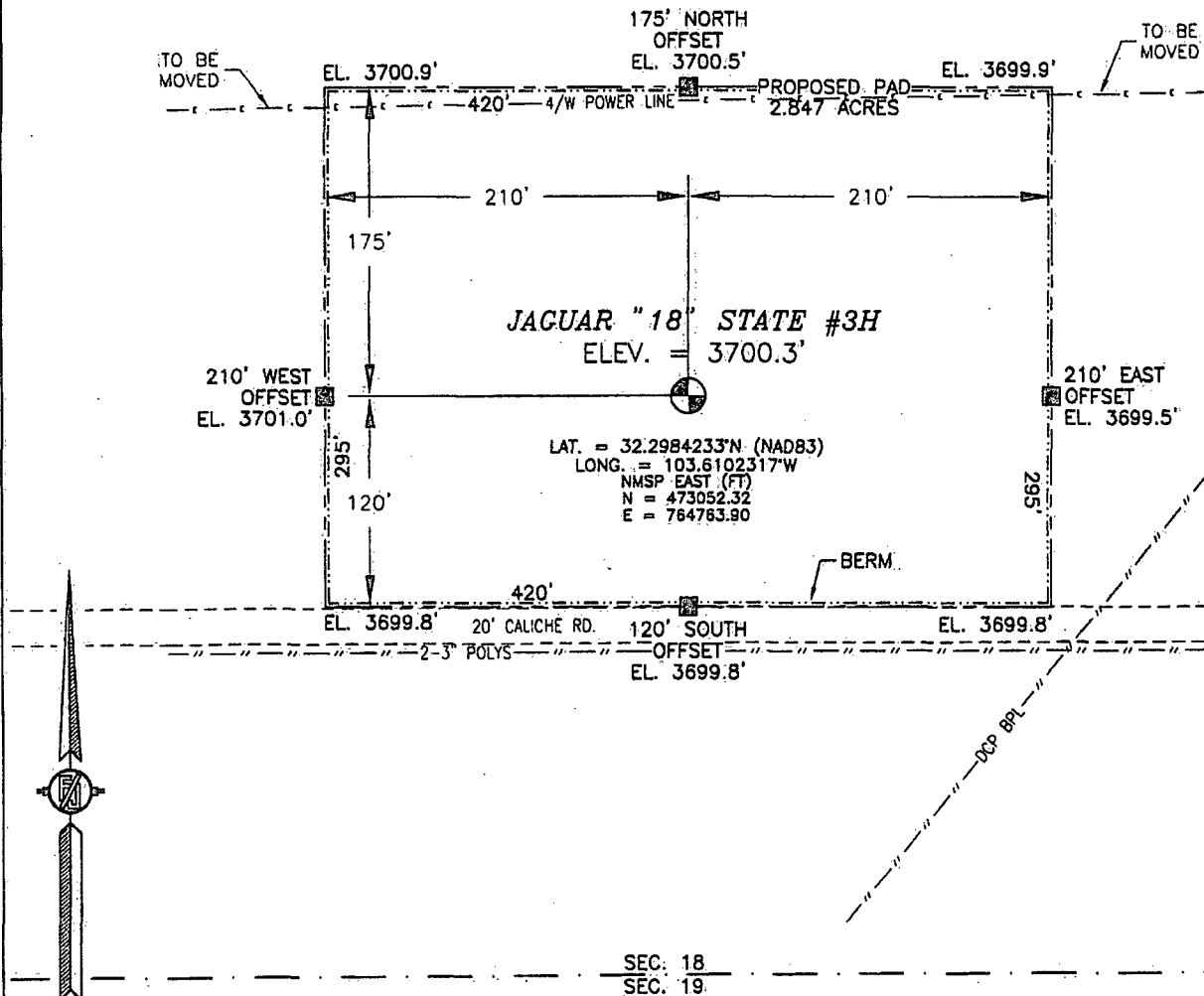
No allowable will be assigned to this completion until all interests have been consolidated or a non-standard unit has been approved by the division.

<p>N89°45'26"E 2603.78 FT</p> <p>NW CORNER SEC. 18 LAT. = 32.3120410°N LONG. = 103.6197740°W NMSP EAST (FT) N = 477986.64 E = 761782.45</p> <p>LOT 1</p>		<p>N89°45'26"E 2603.78 FT</p> <p>NE CORNER SEC. 18 LAT. = 32.3120052°N LONG. = 103.6029220°W NMSP EAST (FT) N = 478008.70 E = 766988.87</p> <p>LOT 2</p>		<p><b>17 OPERATOR CERTIFICATION</b> I hereby certify that the information contained herein is true and complete to the best of my knowledge and belief, and that this organization either owns a working interest or unleased mineral interest in the land including the proposed bottom hole location or has a right to drill this well at this location pursuant to a contract with an owner of such a mineral or working interest, or to a voluntary pooling agreement or a compulsory pooling order heretofore entered by the division.</p> <p><i>M. A. Sirgo, III</i> 10-31-14 Signature Date <b>M. A. Sirgo, III</b> Printed Name <b>manny@enduranceresourcesllc.com</b> E-mail Address</p>
<p>W O CORNER SEC. 18 LAT. = 32.3047962°N LONG. = 103.6197723°W NMSP EAST (FT) N = 475351.04 E = 761800.49</p> <p>LOT 3</p>		<p>E O CORNER SEC. 18 LAT. = 32.3047862°N LONG. = 103.6029120°W NMSP EAST (FT) N = 475375.20 E = 767009.88</p> <p>LOT 4</p>		
<p>SW CORNER SEC. 18 LAT. = 32.2975266°N LONG. = 103.6197716°W NMSP EAST (FT) N = 472706.35 E = 761818.34</p> <p>LOT 4</p>		<p>SE CORNER SEC. 18 LAT. = 32.2975067°N LONG. = 103.6029014°W NMSP EAST (FT) N = 472734.22 E = 767031.14</p> <p>LOT 4</p>		
<p>S89°41'16"W 2572.28 FT</p> <p>SW CORNER SEC. 18 LAT. = 32.2975177°N LONG. = 103.6114486°W NMSP EAST (FT) N = 472720.32 E = 764390.09</p> <p>LOT 4</p>		<p>S89°42'09"W 2641.61 FT</p> <p>SE CORNER SEC. 18 LAT. = 32.2975067°N LONG. = 103.6029014°W NMSP EAST (FT) N = 472734.22 E = 767031.14</p> <p>LOT 4</p>		
<p><b>18 SURVEYOR CERTIFICATION</b> I hereby certify that the well location shown on this plat was plotted from field notes of actual surveys made by me or under my supervision, and that the same is true and correct to the best of my belief.</p> <p>APRIL 16, 2014 Date of Survey <i>[Signature]</i> Signature and Seal of Professional Surveyor Certificate Number F1110001, LARAMIE, PLS 12797 SURVEY NO. 2923</p>				<p><b>19</b></p>

OCT 31 2014

SECTION 18, TOWNSHIP 23 SOUTH, RANGE 33 EAST, N.M.P.M.  
LEA COUNTY, STATE OF NEW MEXICO  
**SITE MAP**

NOTE: LATITUDE AND LONGITUDE COORDINATES ARE SHOWN USING THE NORTH AMERICAN DATUM OF 1983 (NAD83). LISTED NEW MEXICO STATE PLANE EAST COORDINATES ARE GRID (NAD83). BASIS OF BEARING AND DISTANCES USED ARE NEW MEXICO STATE PLANE EAST COORDINATES MODIFIED TO THE SURFACE



0 10 50 100 200

SCALE 1" = 100'

**DIRECTIONS TO LOCATION**

FROM STATE HIGHWAY 128 AND CR 21 (DELAWARE BASIN) GO NORTH ON CR 21 6.1 MILES, TURN LEFT ON CALICHE ROAD AND GO WEST 5.75 MILES AND LOCATION IS ON THE RIGHT (NORTH) 130'.

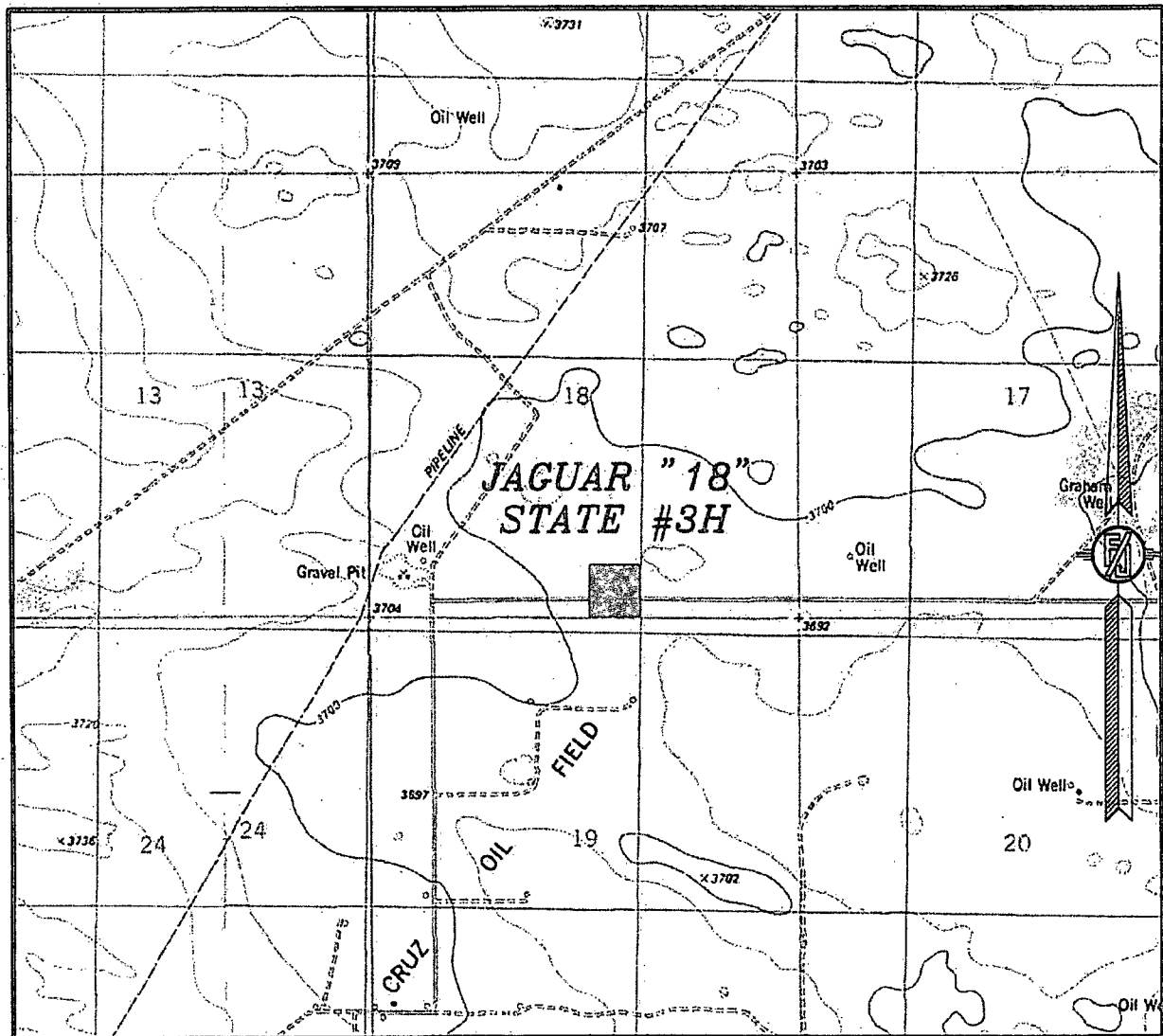
**ENDURANCE RESOURCES, LLC**  
**JAGUAR "18" STATE #3H**  
LOCATED 330 FT. FROM THE SOUTH LINE  
AND 2265 FT. FROM THE EAST LINE OF  
SECTION 18, TOWNSHIP 23 SOUTH,  
RANGE 33 EAST, N.M.P.M.  
LEA COUNTY, STATE OF NEW MEXICO

APRIL 16, 2014

SURVEY NO. 2923

MADRON SURVEYING, INC. 301 SOUTH CANAL (575) 234-3341 CARLSBAD, NEW MEXICO

SECTION 18, TOWNSHIP 23 SOUTH, RANGE 33 EAST, N.M.P.M.  
LEA COUNTY, STATE OF NEW MEXICO  
LOCATION VERIFICATION MAP



USGS QUAD MAP:  
TIP TOP WELLS

NOT TO SCALE

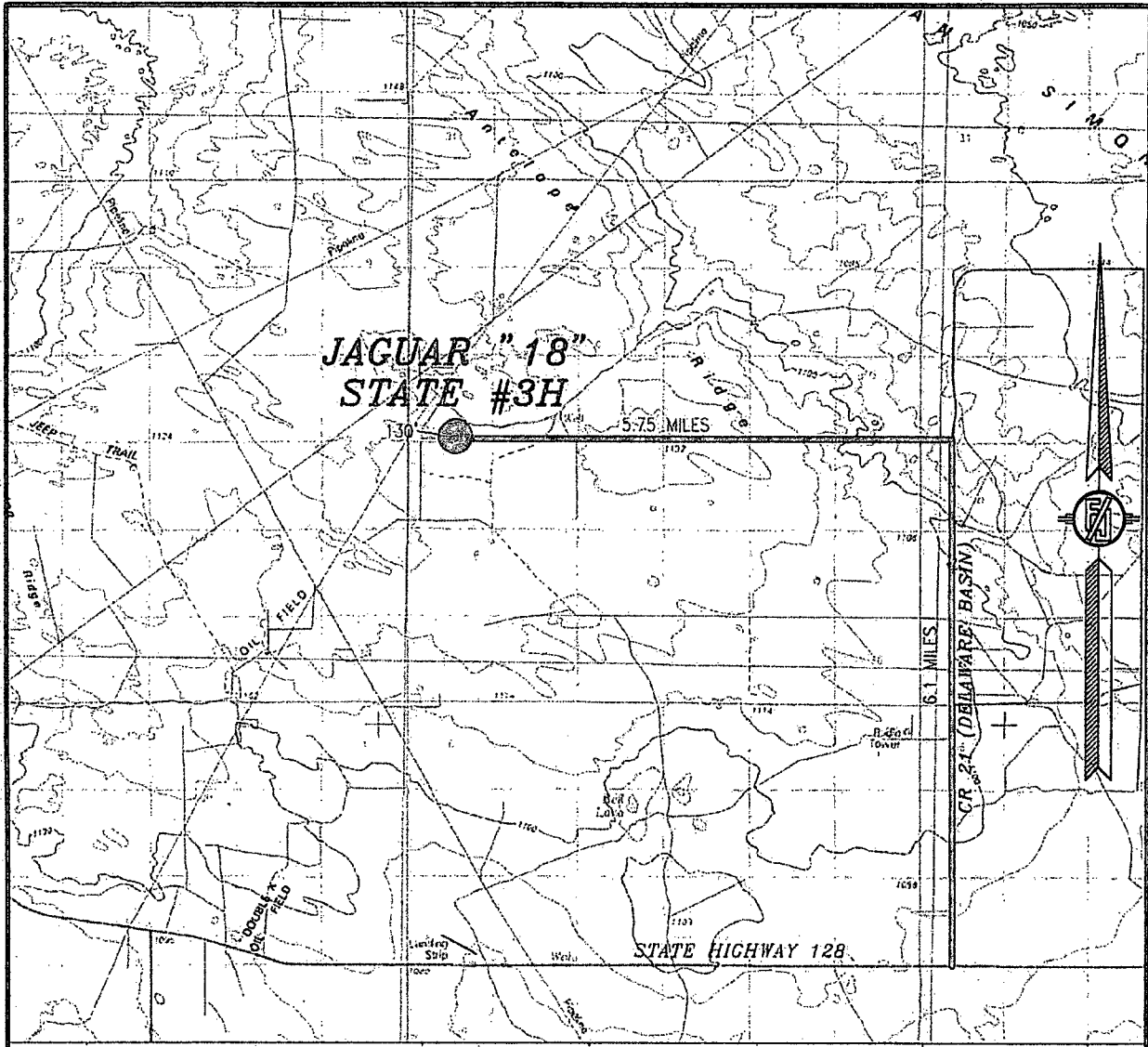
ENDURANCE RESOURCES, LLC  
JAGUAR "18" STATE #3H  
LOCATED 330 FT. FROM THE SOUTH LINE  
AND 2265 FT. FROM THE EAST LINE OF  
SECTION 18, TOWNSHIP 23 SOUTH,  
RANGE 33 EAST, N.M.P.M.  
LEA COUNTY, STATE OF NEW MEXICO

APRIL 16, 2014

SURVEY NO. 2923

MADRON SURVEYING, INC. 301 SOUTH CANAL CARLSBAD, NEW MEXICO  
(575) 234-3341

SECTION 18, TOWNSHIP 23 SOUTH, RANGE 33 EAST, N.M.P.M.  
LEA COUNTY, STATE OF NEW MEXICO  
VICINITY MAP



DISTANCES IN MILES

NOT TO SCALE

**DIRECTIONS TO LOCATION**

FROM STATE HIGHWAY 128 AND CR 21 (DELAWARE BASIN) GO NORTH  
ON CR 21 6.1 MILES, TURN LEFT ON CALICHE ROAD AND GO WEST  
5.75 MILES AND LOCATION IS ON THE RIGHT (NORTH) 130'.

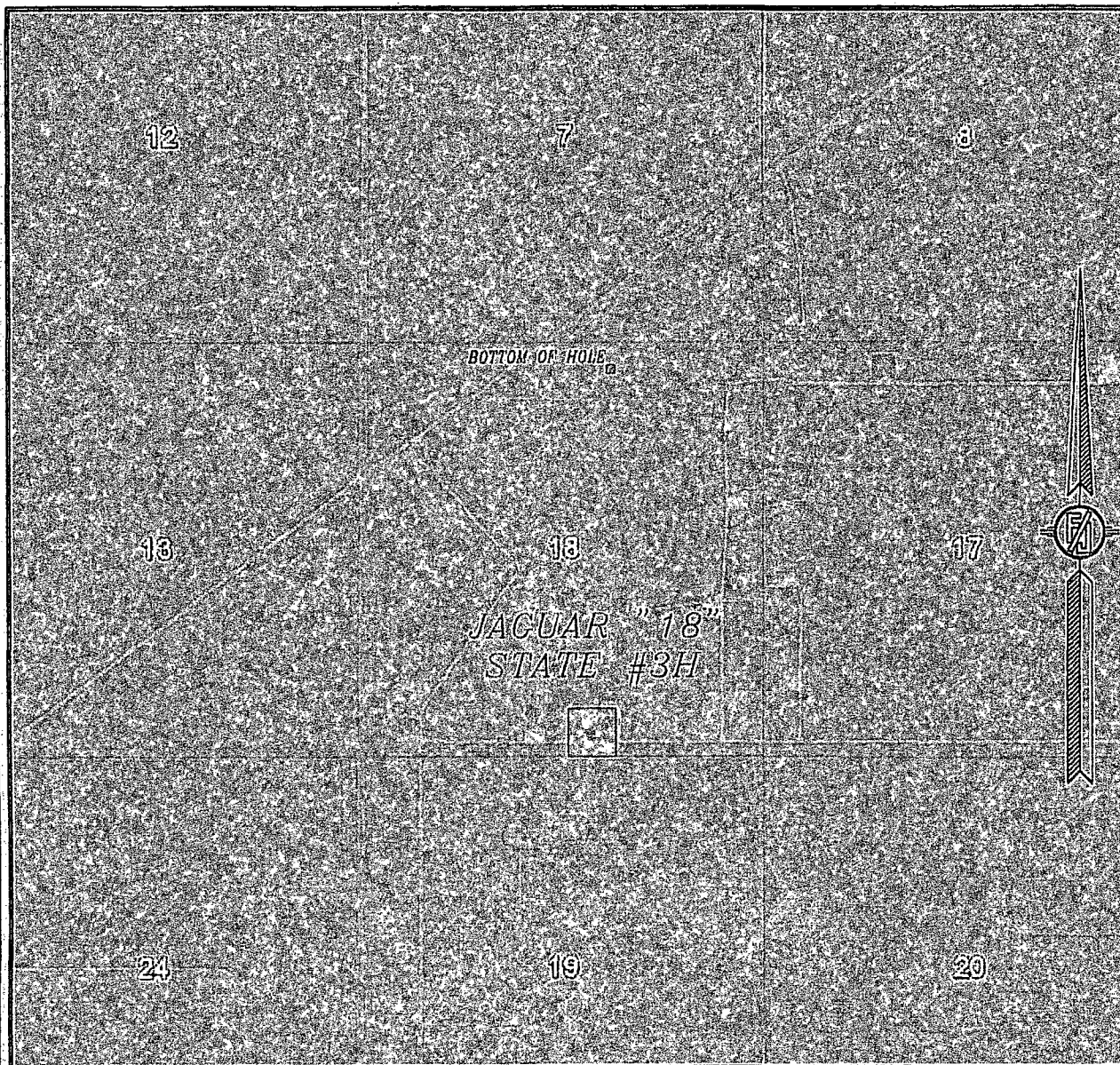
**ENDURANCE RESOURCES, LLC**  
**JAGUAR "18" STATE #3H**  
LOCATED 330 FT. FROM THE SOUTH LINE  
AND 2265 FT. FROM THE EAST LINE OF  
SECTION 18, TOWNSHIP 23 SOUTH,  
RANGE 33 EAST, N.M.P.M.  
LEA COUNTY, STATE OF NEW MEXICO

APRIL 16, 2014

SURVEY NO. 2923

MADRON SURVEYING, INC. 301 SOUTH CANAL (575) 234-3341 CARLSBAD, NEW MEXICO

SECTION 18, TOWNSHIP 23 SOUTH, RANGE 33 EAST, N.M.P.M.  
LEA COUNTY, STATE OF NEW MEXICO  
**AERIAL PHOTO**



NOT TO SCALE  
AERIAL PHOTO:  
GOOGLE EARTH  
FEBRUARY 2014

**ENDURANCE RESOURCES, LLC**  
**JAGUAR "18" STATE #3H**  
LOCATED 330 FT. FROM THE SOUTH LINE  
AND 2265 FT. FROM THE EAST LINE OF  
SECTION 18, TOWNSHIP 23 SOUTH,  
RANGE 33 EAST, N.M.P.M.  
LEA COUNTY, STATE OF NEW MEXICO

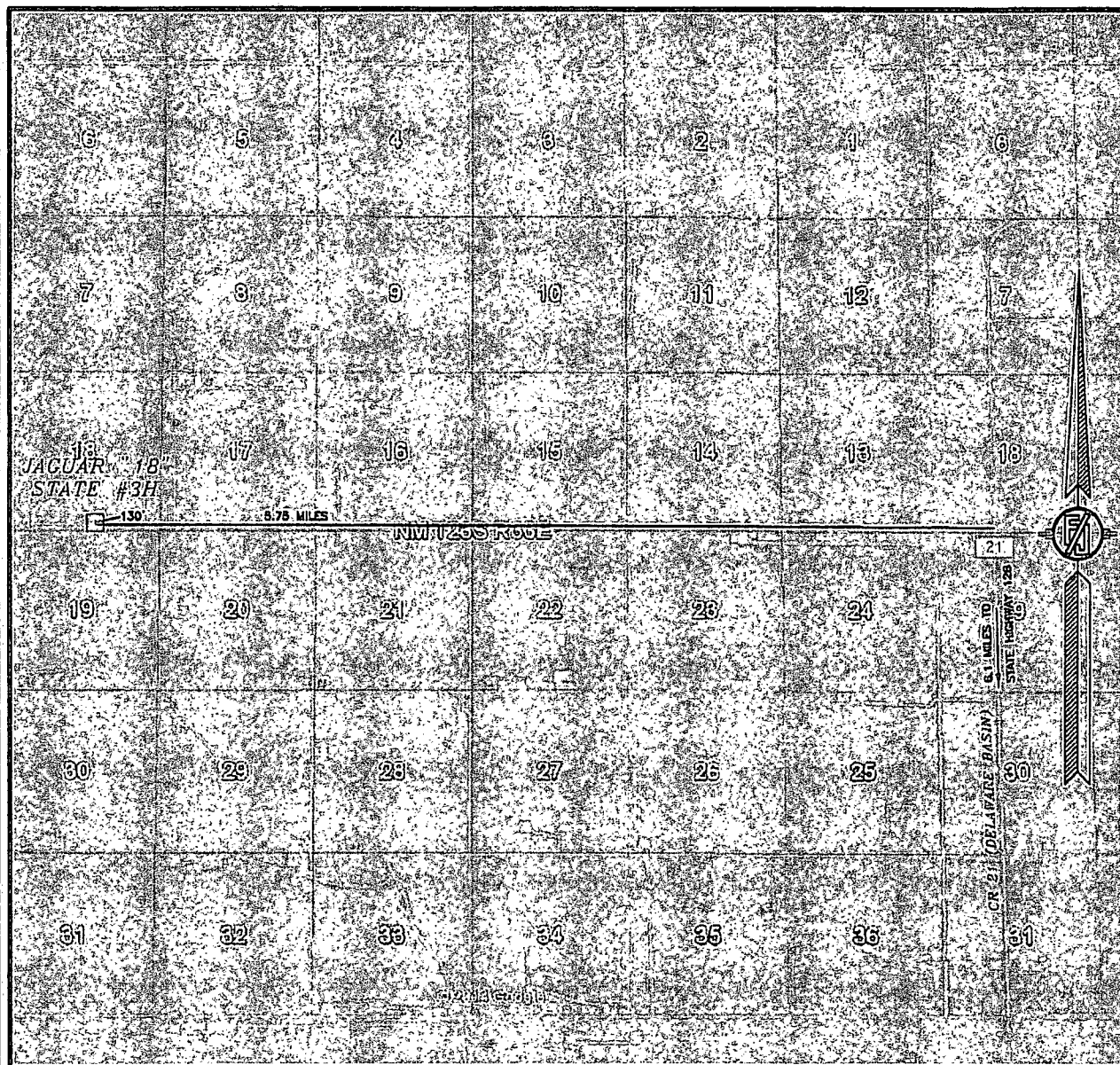
APRIL 16, 2014

SURVEY NO. 2923

MADRON SURVEYING, INC. 301 SOUTH CANAL (575) 234-3341 CARLSBAD, NEW MEXICO



SECTION 18, TOWNSHIP 23 SOUTH, RANGE 33 EAST, N.M.P.M.  
LEA COUNTY, STATE OF NEW MEXICO  
ACCESS AERIAL ROUTE MAP



NOT TO SCALE  
AERIAL PHOTO:  
GOOGLE EARTH  
FEBRUARY 2014

ENDURANCE RESOURCES, LLC  
JAGUAR "18" STATE #3H  
LOCATED 330 FT. FROM THE SOUTH LINE  
AND 2265 FT. FROM THE EAST LINE OF  
SECTION 18, TOWNSHIP 23 SOUTH,  
RANGE 33 EAST, N.M.P.M.  
LEA COUNTY, STATE OF NEW MEXICO

APRIL 16, 2014

SURVEY NO. 2923

MADRON SURVEYING, INC. 301 SOUTH CANAL (575) 234-3341 CARLSBAD, NEW MEXICO