

WELL LOCATION AND ACREAGE DEDICATION RECEIVED

¹ API Number 30-025-42215	² Pool Code 97899	³ Pool Name WC-025 G-06 5253206M; Bone S.
⁴ Property Code 71389	⁵ Property Name CHINCOTEAGUE 32 STATE COM	⁶ Well Number 1H
⁷ OGRID-No. 6137	⁸ Operator Name DEVON ENERGY PRODUCTION COMPANY, L.P.	⁹ Elevation 3476.8

¹⁰ Surface Location

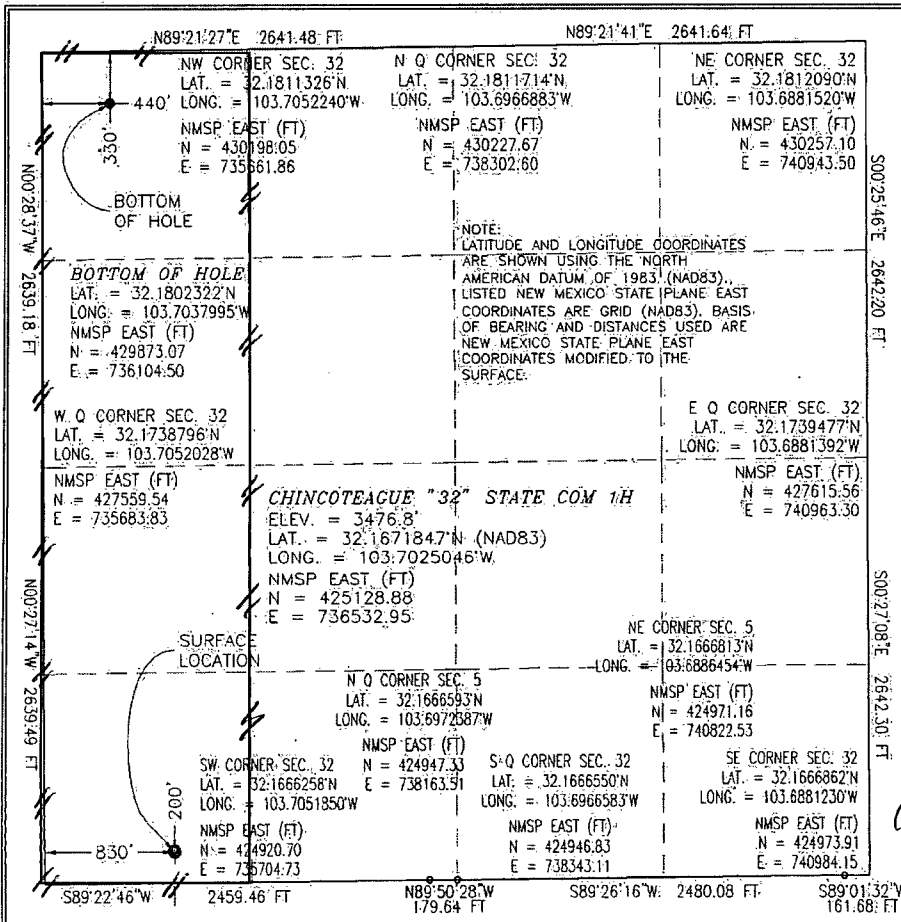
UL or lot no.	Section	Township	Range	Lot 1dn	Feet from the	North/South line	Feet from the	East/West line	County
M	32	24 S	32 E		200	SOUTH	830	WEST	DEA

ii Bottom Hole Location If Different From Surface

UL or lot no.: D	Section 32	Township 24 S	Range 32 E	Lot Idn	Feet from the 330	North/South line NORTH	Feet from the	East/West line WEST	County LEA
----------------------------	----------------------	-------------------------	----------------------	---------	-----------------------------	----------------------------------	---------------	-------------------------------	----------------------

¹² Dedicated Acres 160 ac	¹³ Joint or Infill	¹⁴ Consolidation Code	¹⁵ Order No.
---	-------------------------------	----------------------------------	-------------------------

No allowable will be assigned to this completion until all interests have been consolidated or a non-standard unit has been approved by the division.



17. OPERATOR CERTIFICATION.

I hereby certify that the information contained herein is true and complete to the best of my knowledge and belief, and that this organization either owns a working interest or unleased mineral interest in the land including the proposed bottom hole location or has a right to drill this well or this location pursuant to a contract with an owner of such a mineral or working interest, or to a voluntary pooling agreement or a compulsory pooling order, heretofore entered by the division.

Signature: Jim C. Coal Date: 10/30/14

Trina C. Couch, Regulatory Analyst

Printed Name _____

trina.couch@dvn.com

E-mail Address

18 SURVEYOR CERTIFICATION

I hereby certify that the well location shown on this plat was plotted from field notes of actual surveys made by me or under my supervision, and that the same is true and correct to the best of my belief.

OCTOBER 2011

Date of Survey 112797

Signature and Seal of Professional Surveyor

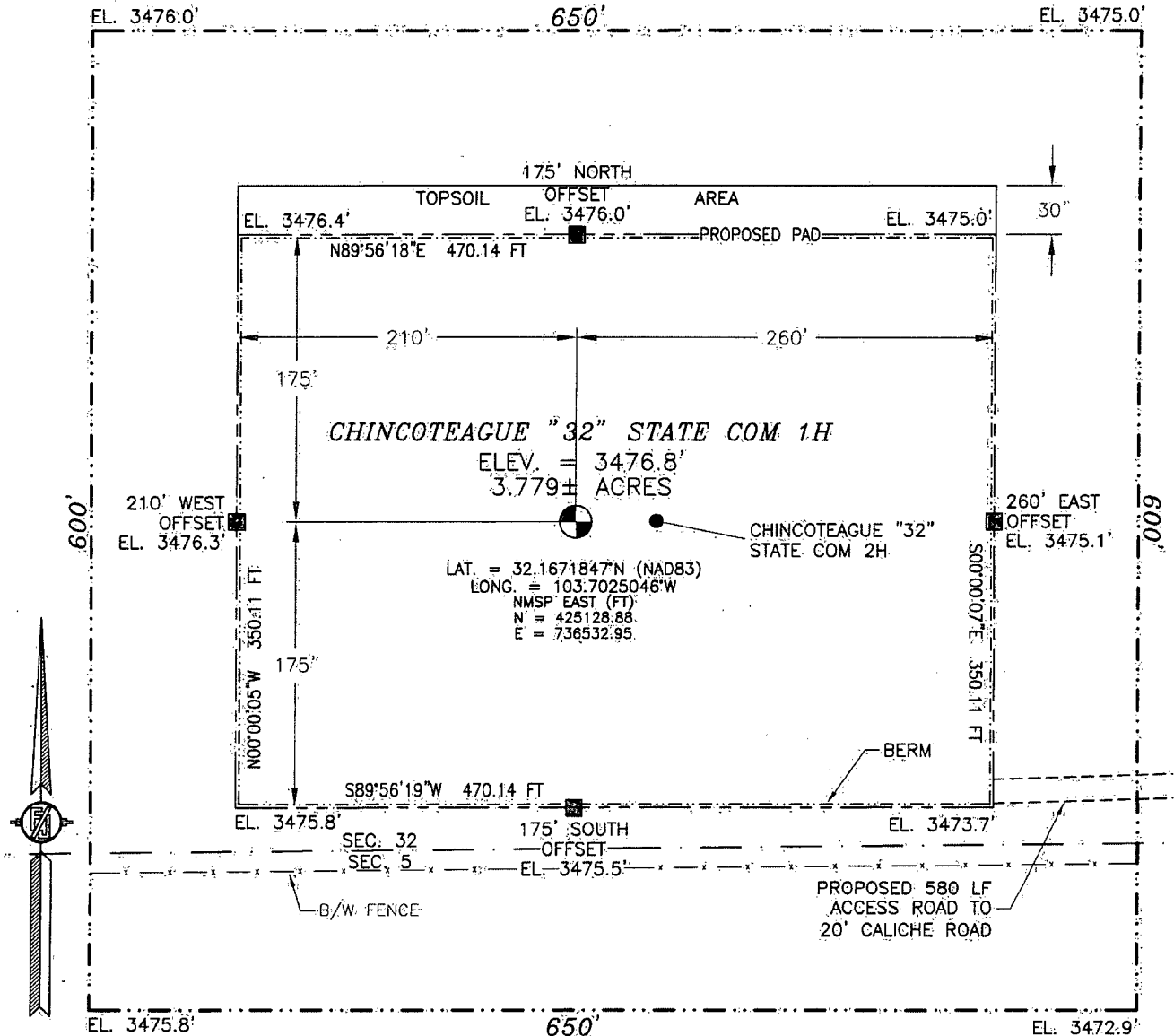
Certificate Number: FILMONE JARAMILLO; PLS 12797

SURVEY NO. 3343

OCT 31 2014

SECTION 32, TOWNSHIP 24 SOUTH, RANGE 32 EAST, N.M.P.M.
LEA COUNTY, STATE OF NEW MEXICO
SITE MAP

NOTE: LATITUDE AND LONGITUDE COORDINATES ARE SHOWN USING THE NORTH AMERICAN DATUM OF 1983 (NAD83). LISTED NEW MEXICO STATE PLANE EAST COORDINATES ARE GRID (NAD83). BASIS OF BEARING AND DISTANCES USED ARE NEW MEXICO STATE PLANE EAST COORDINATES MODIFIED TO THE SURFACE



0 10 50 100 200

SCALE 1" = 100'

DIRECTIONS TO LOCATION

FROM STATE HIGHWAY 128 AND CR 1 (ORLA ROAD) GO SOUTH ON CR 1 2.4 MILES, TURN RIGHT ON CALICHE ROAD AND GO WEST 1.0 MILES, TURN LEFT AND GO SOUTH 0.5 MILES, BEND RIGHT AND GO WEST 0.1 MILES, BEND LEFT AND GO SOUTHWEST 470', BEND RIGHT AND GO WEST 0.36 MILES, TURN LEFT AND GO SOUTH-SOUTHWEST 0.43 MILES TO A PROPOSED ROAD SURVEY AND FOLLOW FLAGS WEST 580' TO THE PROPOSED SOUTHEAST PAD CORNER FOR THIS LOCATION.

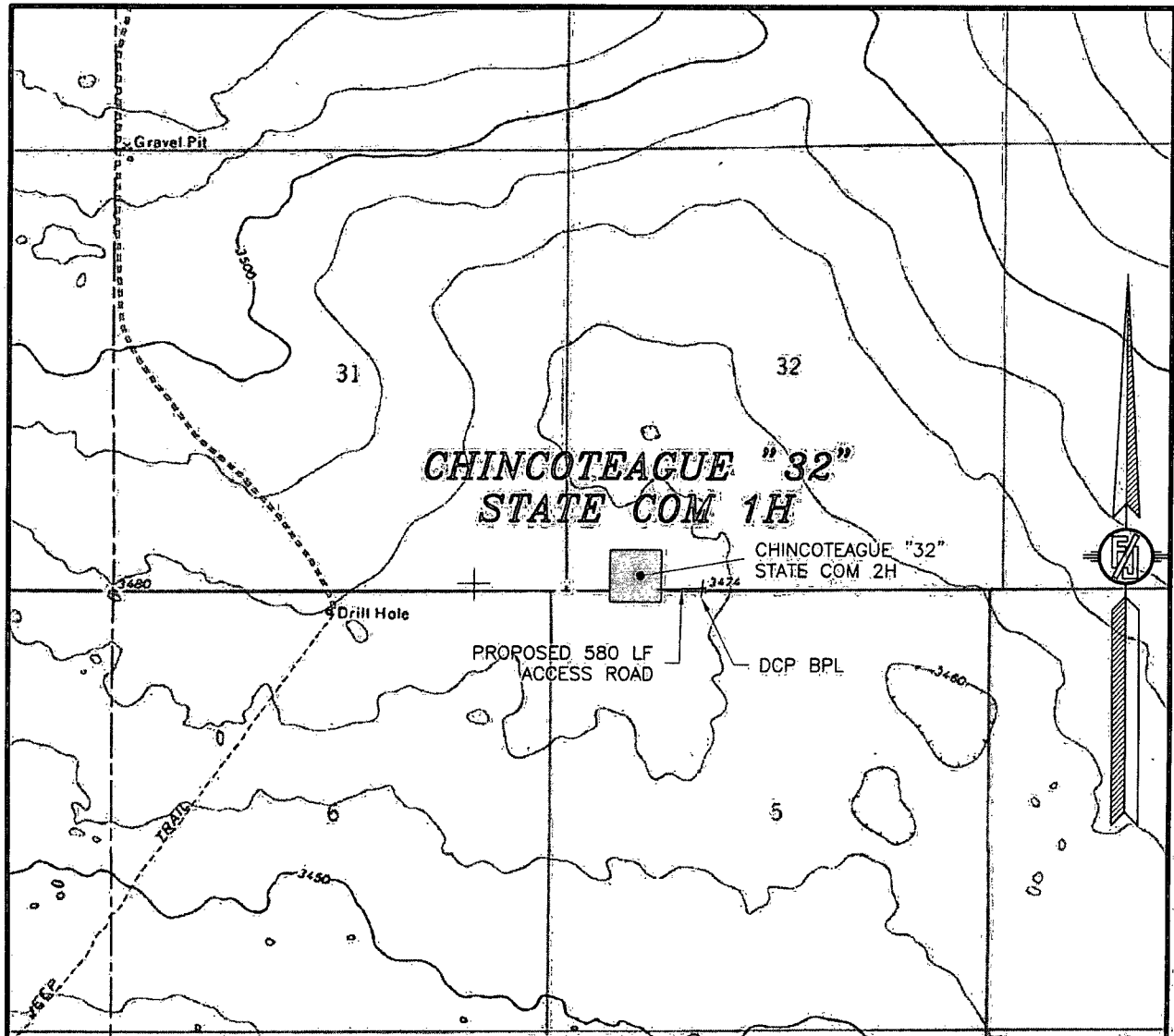
DEVON ENERGY PRODUCTION COMPANY, L.P.
CHINCOTEAGUE "32" STATE COM 1H
LOCATED 200 FT. FROM THE SOUTH LINE
AND 830 FT. FROM THE WEST LINE OF
SECTION 32, TOWNSHIP 24 SOUTH,
RANGE 32 EAST, N.M.P.M.
LEA COUNTY, STATE OF NEW MEXICO

OCTOBER 3, 2014

SURVEY NO. 3343

MADRON SURVEYING, INC. 301 SOUTH CANAL (575) 234-3341 CARLSBAD, NEW MEXICO

SECTION 32, TOWNSHIP 24 SOUTH, RANGE 32 EAST, N.M.P.M.
LEA COUNTY, STATE OF NEW MEXICO
LOCATION VERIFICATION MAP



USGS QUAD MAP:
PADUCA BREAKS NW

NOT TO SCALE

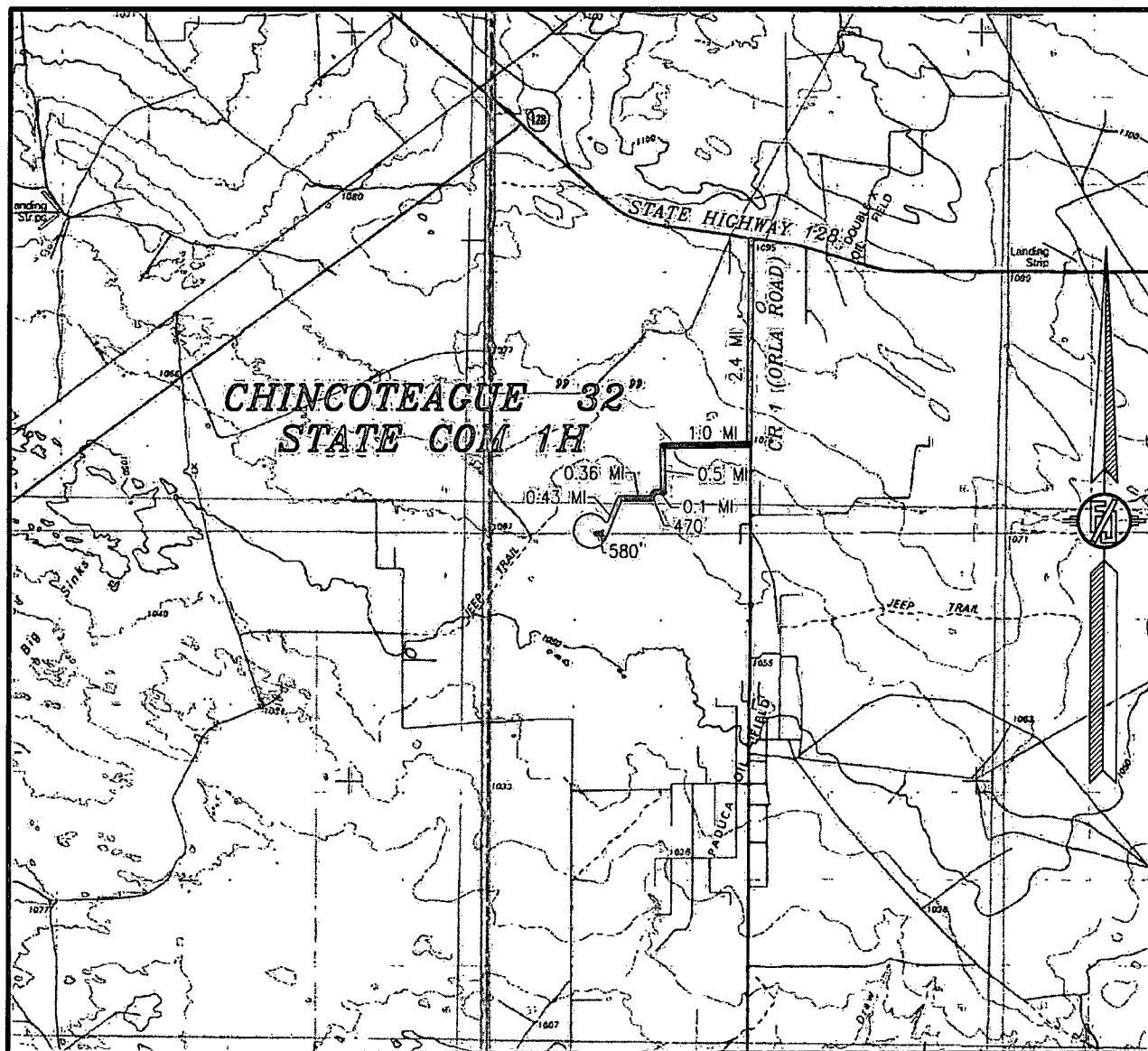
DEVON ENERGY PRODUCTION COMPANY, L.P.
CHINCOTEAGUE "32" STATE COM 1H
LOCATED 200 FT. FROM THE SOUTH LINE
AND 830 FT. FROM THE WEST LINE OF
SECTION 32, TOWNSHIP 24 SOUTH,
RANGE 32 EAST, N.M.P.M.
LEA COUNTY, STATE OF NEW MEXICO

OCTOBER 3, 2014

SURVEY NO. 3343

MADRON SURVEYING, INC. 301 SOUTH CANAL (575) 234-3341 CARLSBAD, NEW MEXICO

SECTION 32, TOWNSHIP 24 SOUTH, RANGE 32 EAST, N.M.P.M.
LEA COUNTY, STATE OF NEW MEXICO
VICINITY MAP



DISTANCES IN MILES

NOT TO SCALE

DEVON ENERGY PRODUCTION COMPANY, L.P.

CHINCOTEAGUE "32" STATE COM 1H

LOCATED 200 FT. FROM THE SOUTH LINE

AND 830 FT. FROM THE WEST LINE OF

SECTION 32, TOWNSHIP 24 SOUTH,

RANGE 32 EAST, N.M.P.M.

LEA COUNTY, STATE OF NEW MEXICO

DIRECTIONS TO LOCATION

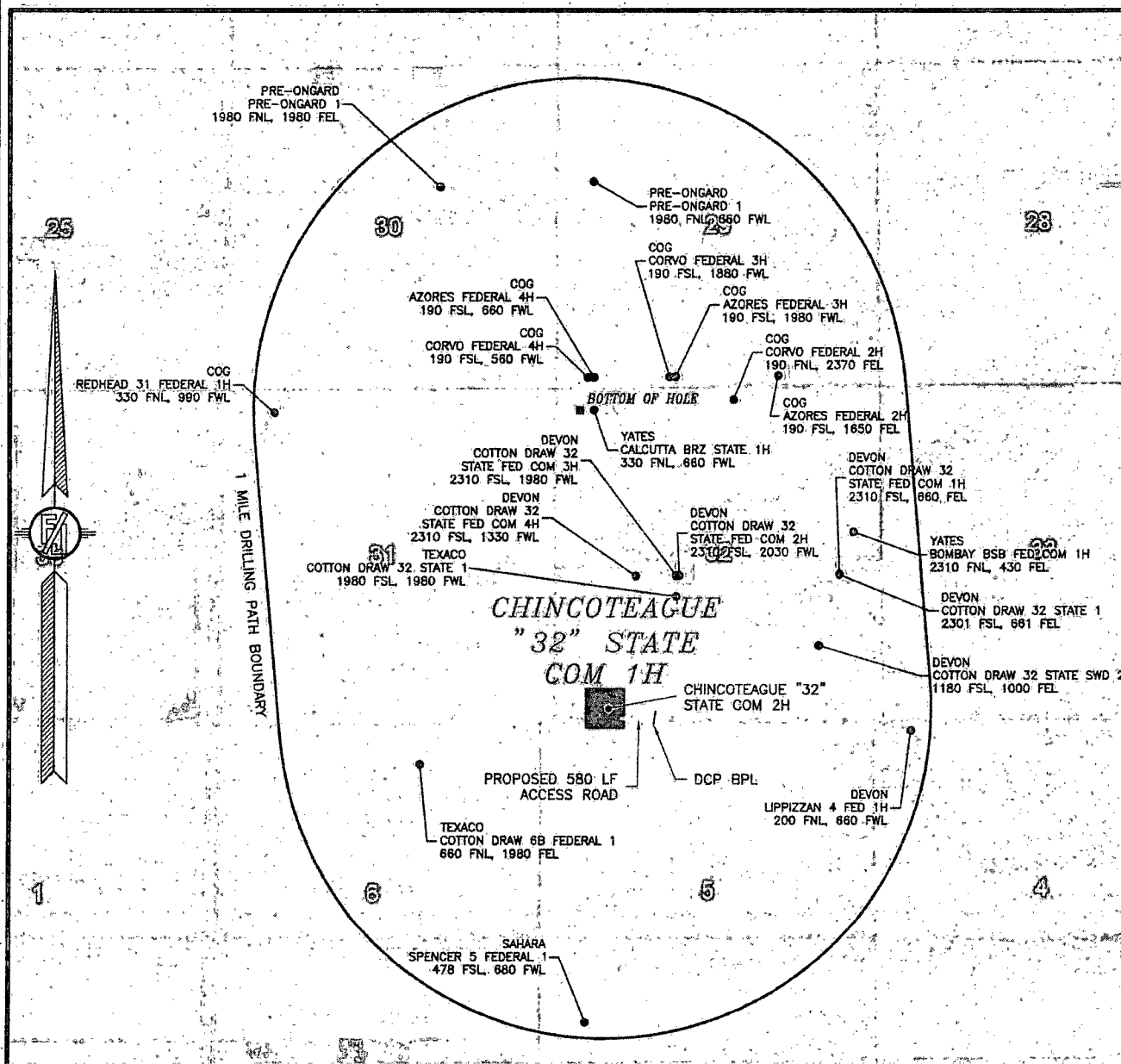
FROM STATE HIGHWAY 128 AND CR 1 (ORLA ROAD) GO SOUTH ON CR 1 2.4 MILES, TURN RIGHT ON CALICHE ROAD AND GO WEST 1.0 MILES, TURN LEFT AND GO SOUTH 0.5 MILES, BEND RIGHT AND GO WEST 0.1 MILES, BEND LEFT AND GO SOUTHWEST 470', BEND RIGHT AND GO WEST 0.36 MILES, TURN LEFT AND GO SOUTH-SOUTHWEST 0.43 MILES TO A PROPOSED ROAD SURVEY AND FOLLOW FLAGS WEST 580' TO THE PROPOSED SOUTHEAST PAD CORNER FOR THIS LOCATION.

OCTOBER 3, 2014

SURVEY NO. 3343

MADRON SURVEYING, INC. 301 SOUTH CANAL (575) 234-3341 CARLSBAD, NEW MEXICO

SECTION 32, TOWNSHIP 24 SOUTH, RANGE 32 EAST, N.M.P.M.
LEA COUNTY, STATE OF NEW MEXICO
AERIAL PHOTO



NOT TO SCALE
AERIAL PHOTO:
GOOGLE EARTH
FEBRUARY 2014

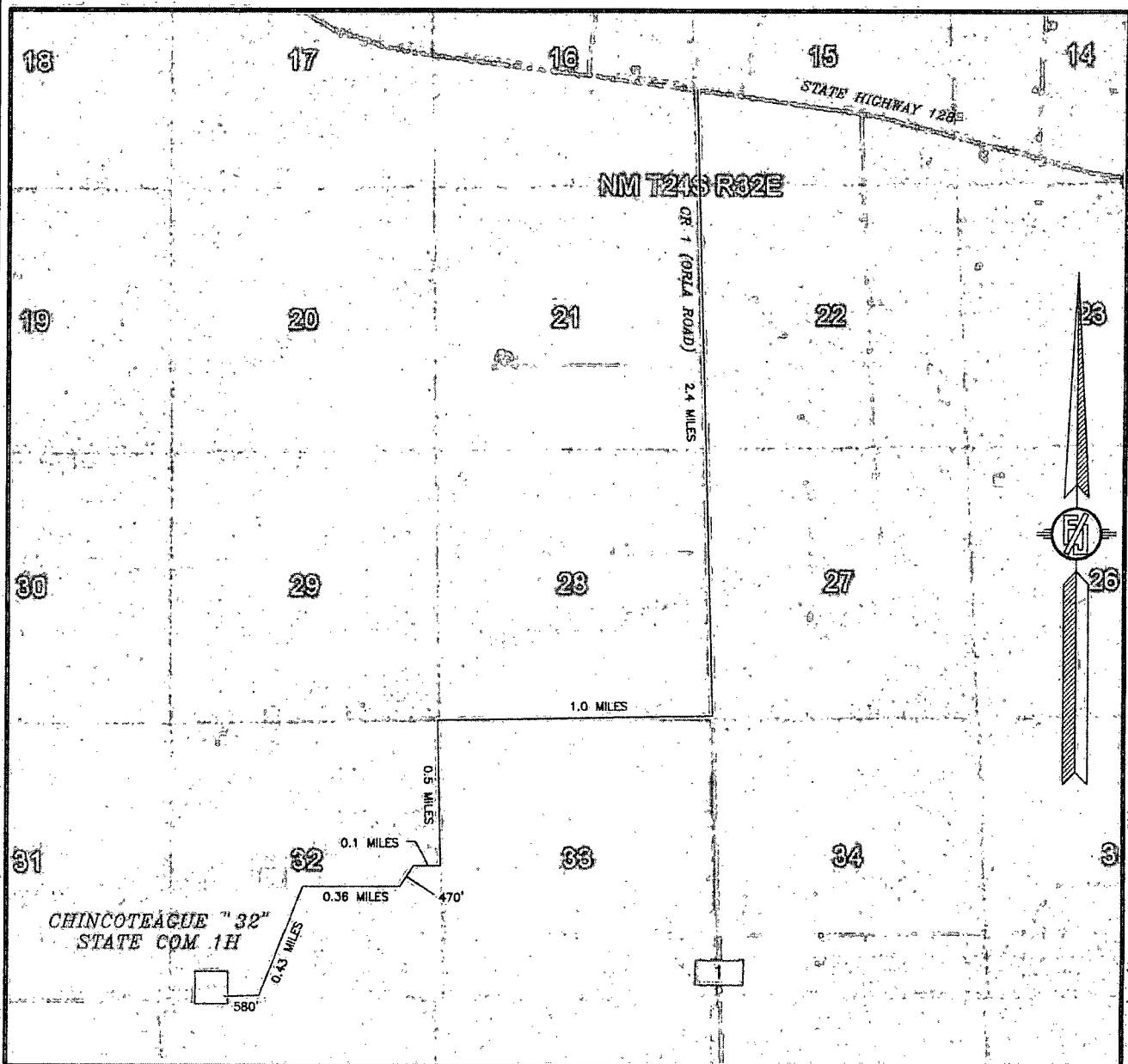
DEVON ENERGY PRODUCTION COMPANY, L.P.
CHINCOTEAGUE "32" STATE COM 1H
LOCATED 200 FT. FROM THE SOUTH LINE
AND 830 FT. FROM THE WEST LINE OF
SECTION 32, TOWNSHIP 24 SOUTH,
RANGE 32 EAST, N.M.P.M.
LEA COUNTY, STATE OF NEW MEXICO

OCTOBER 3, 2014

SURVEY NO. 3343

MADRON SURVEYING, INC. 301 SOUTH CANAL (575) 234-3341 CARLSBAD, NEW MEXICO

SECTION 32, TOWNSHIP 24 SOUTH, RANGE 32 EAST, N.M.P.M.
LEA COUNTY, STATE OF NEW MEXICO
ACCESS AERIAL ROUTE MAP



NOT TO SCALE
AERIAL PHOTO:
GOOGLE EARTH
FEBRUARY 2014

DEVON ENERGY PRODUCTION COMPANY, L.P.
CHINCOTEAGUE "32" STATE COM 1H
LOCATED 200 FT. FROM THE SOUTH LINE
AND 830 FT. FROM THE WEST LINE OF
SECTION 32, TOWNSHIP 24 SOUTH,
RANGE 32 EAST, N.M.P.M.
LEA COUNTY, STATE OF NEW MEXICO

OCTOBER 3, 2014

SURVEY NO. 3343

MADRON SURVEYING, INC. 301 SOUTH CANAL (575) 234-3341 CARLSBAD, NEW MEXICO