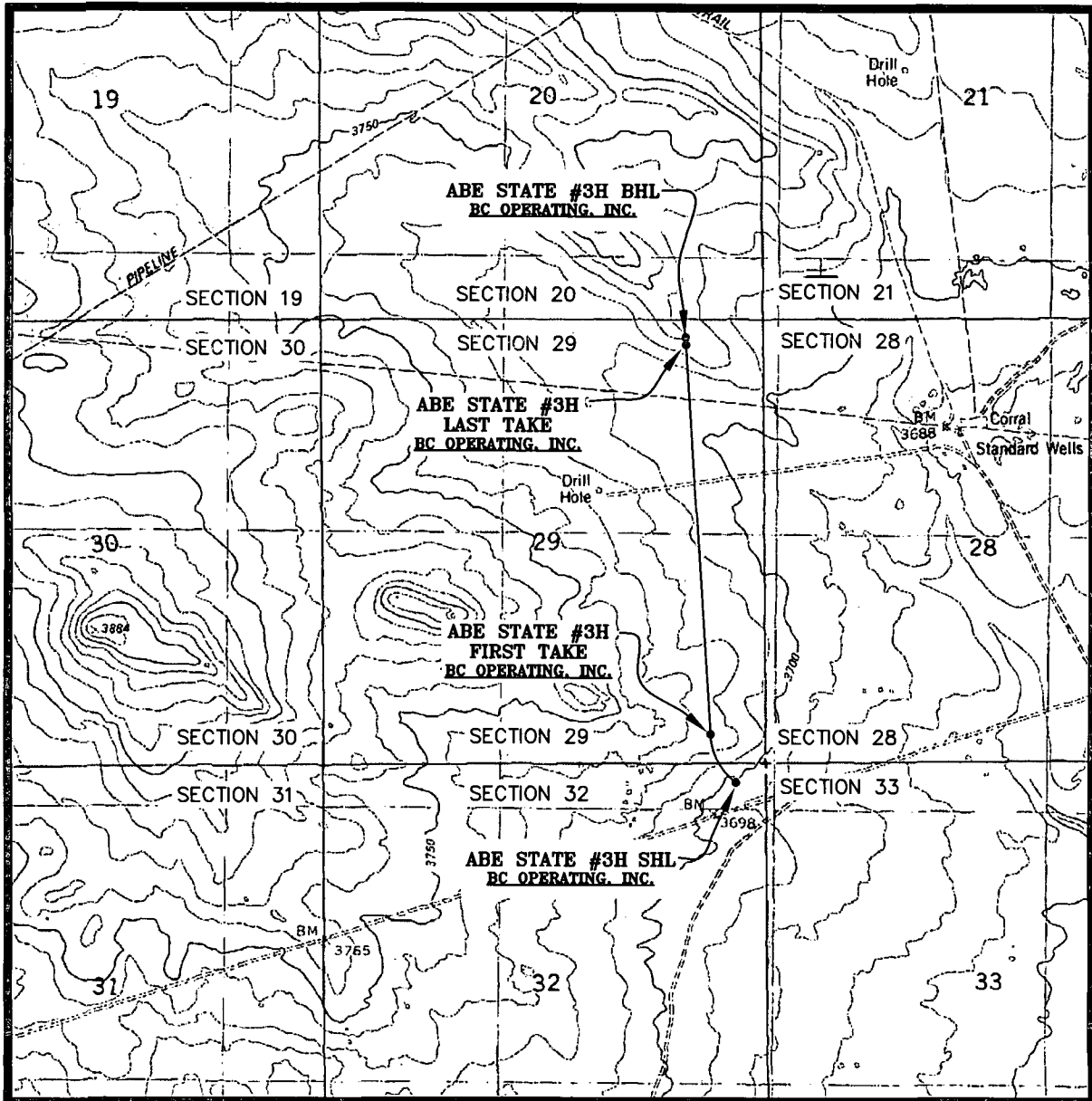


200. NOV 05 2014

LOCATION VERIFICATION MAP



SEC. 32 TWP. 21-S RGE. 33-E

SURVEY: N.M.P.M.

COUNTY: LEA

DESCRIPTION: 240' FNL & 360' FEL

ELEVATION: 3701'

OPERATOR: B.C. OPERATING, INC.

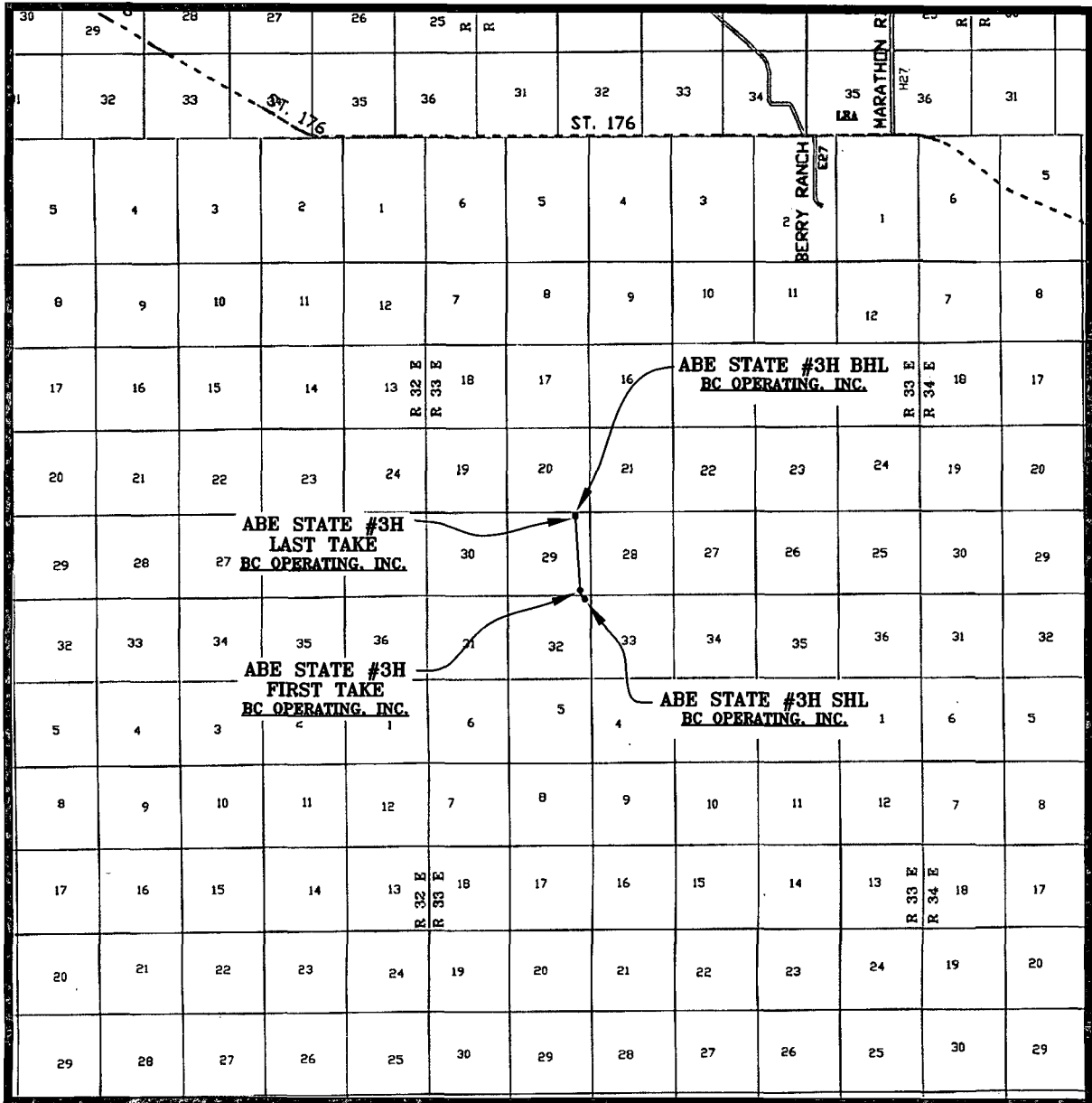
LEASE: ABE STATE

U.S.G.S. TOPOGRAPHIC MAP: GRAMA RIDGE, NW, N.M.

SCALE: 1" = 2000'
CONTOUR INTERVAL = 10'

PREPARED BY:
R-SQUARED GLOBAL, LLC
1309 LOUISVILLE AVENUE, MONROE, LA 71201
318-323-6900 OFFICE
JOB No. R3337_0003

VICINITY MAP



SEC. 32 TWP. 21-S RGE. 33-E

SCALE: 1" = 2 MILES

SURVEY: N.M.P.M.

COUNTY: LEA

DESCRIPTION: 240' FNL & 360' FEL

ELEVATION: 3701'

OPERATOR: B.C. OPERATING, INC.

LEASE: ABE STATE

U.S.G.S. TOPOGRAPHIC MAP: GRAMA RIDGE, NW, N.M.

PREPARED BY:
R-SQUARED GLOBAL, LLC
1309 LOUISVILLE AVENUE, MONROE, LA 71201
318-323-6900 OFFICE
JOB No. R3337_0003