

District I
1625 N. French Dr., Hobbs, NM 88240
Phone: (575) 393-6161 Fax: (575) 393-0720
District II
811 S. First St., Artesia, NM 88210
Phone: (575) 748-1283 Fax: (575) 748-9720
District III
1000 Rio Brazos Road, Aztec, NM 87410
Phone: (505) 334-6178 Fax: (505) 334-6170
District IV
1220 S. St. Francis Dr., Santa Fe, NM 87505
Phone: (505) 476-3460 Fax: (505) 476-3462

State of New Mexico
Energy, Minerals & Natural Resources Department
OIL CONSERVATION DIVISION
1220 South St. Francis Dr.
Santa Fe, NM 87505

Form C-102
Revised August 1, 2011
Submit one copy to appropriate
District Office

HOBBS OGD

NOV 12 2014

AMENDED REPORT

WELL LOCATION AND ACREAGE DEDICATION PLAT

RECEIVED

¹ API Number 70-025-42264	² Pool Code 97899	³ Pool Name WC-025 G-06 52532-06M; BONE SPRING
⁴ Property Code 313839	⁵ Property Name CHINCOTEAGUE 32 STATE COM	
⁷ OGRID No. 6137	⁸ Operator Name DEVON ENERGY PRODUCTION COMPANY, L.P.	⁶ Well Number 5H
		⁹ Elevation 3470.4

¹⁰ Surface Location

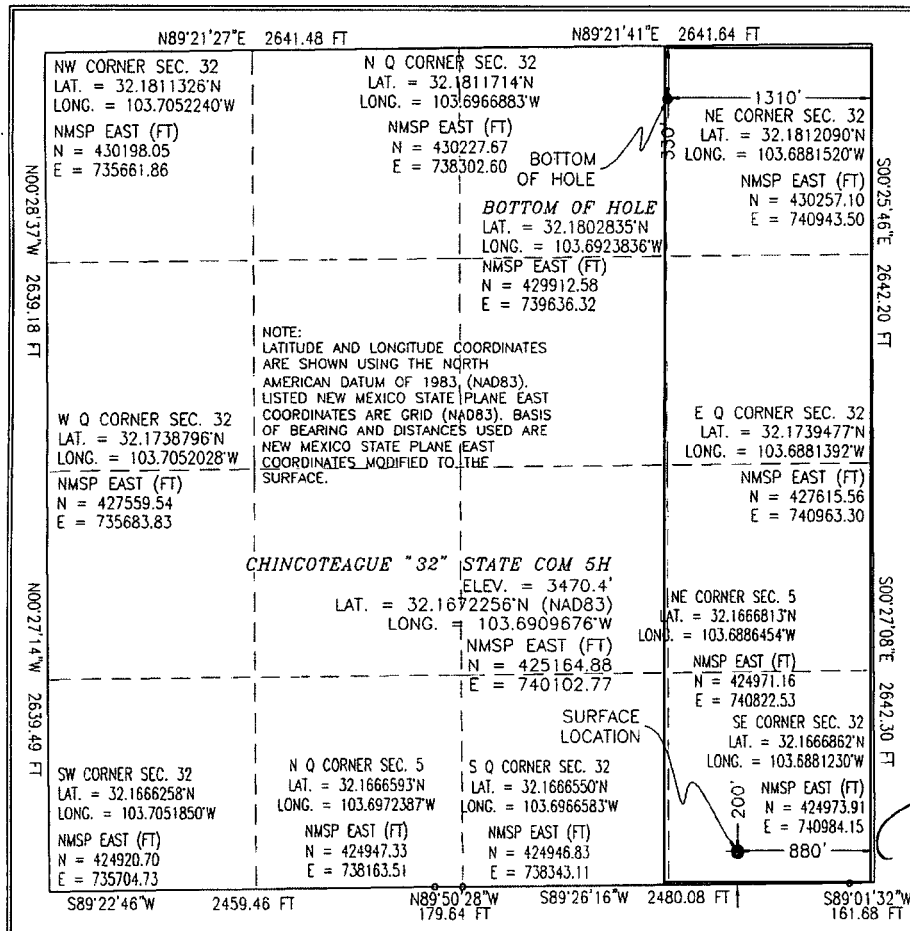
UL or lot no.	Section	Township	Range	Lot Idn	Feet from the	North/South line	Feet from the	East/West line	County
P	32	24 S	32 E		200	SOUTH	880	EAST	LEA

¹¹ Bottom Hole Location If Different From Surface

UL or lot no.	Section	Township	Range	Lot Idn	Feet from the	North/South line	Feet from the	East/West line	County
A	32	24 S	32 E		330	NORTH	1310	EAST	LEA

¹² Dedicated Acres 160 ac	¹³ Joint or Infill	¹⁴ Consolidation Code	¹⁵ Order No.
-----------------------------------------	-------------------------------	----------------------------------	-------------------------

No allowable will be assigned to this completion until all interests have been consolidated or a non-standard unit has been approved by the division.



¹⁷ OPERATOR CERTIFICATION

I hereby certify that the information contained herein is true and complete to the best of my knowledge and belief, and that this organization either owns a working interest or unleased mineral interest in the land including the proposed bottom hole location or has a right to drill this well at this location pursuant to a contract with an owner of such a mineral or working interest, or to a voluntary pooling agreement or a compulsory pooling order heretofore entered by the division.

Trina C. Couch 11/11/14
Signature Date

Trina C. Couch, Regulatory Analyst

Printed Name

trina.couch@dmn.com

E-mail Address

¹⁸ SURVEYOR CERTIFICATION

I hereby certify that the well location shown on this plat was plotted from field notes of actual surveys made by me or under my supervision, and that the same is true and correct to the best of my belief.

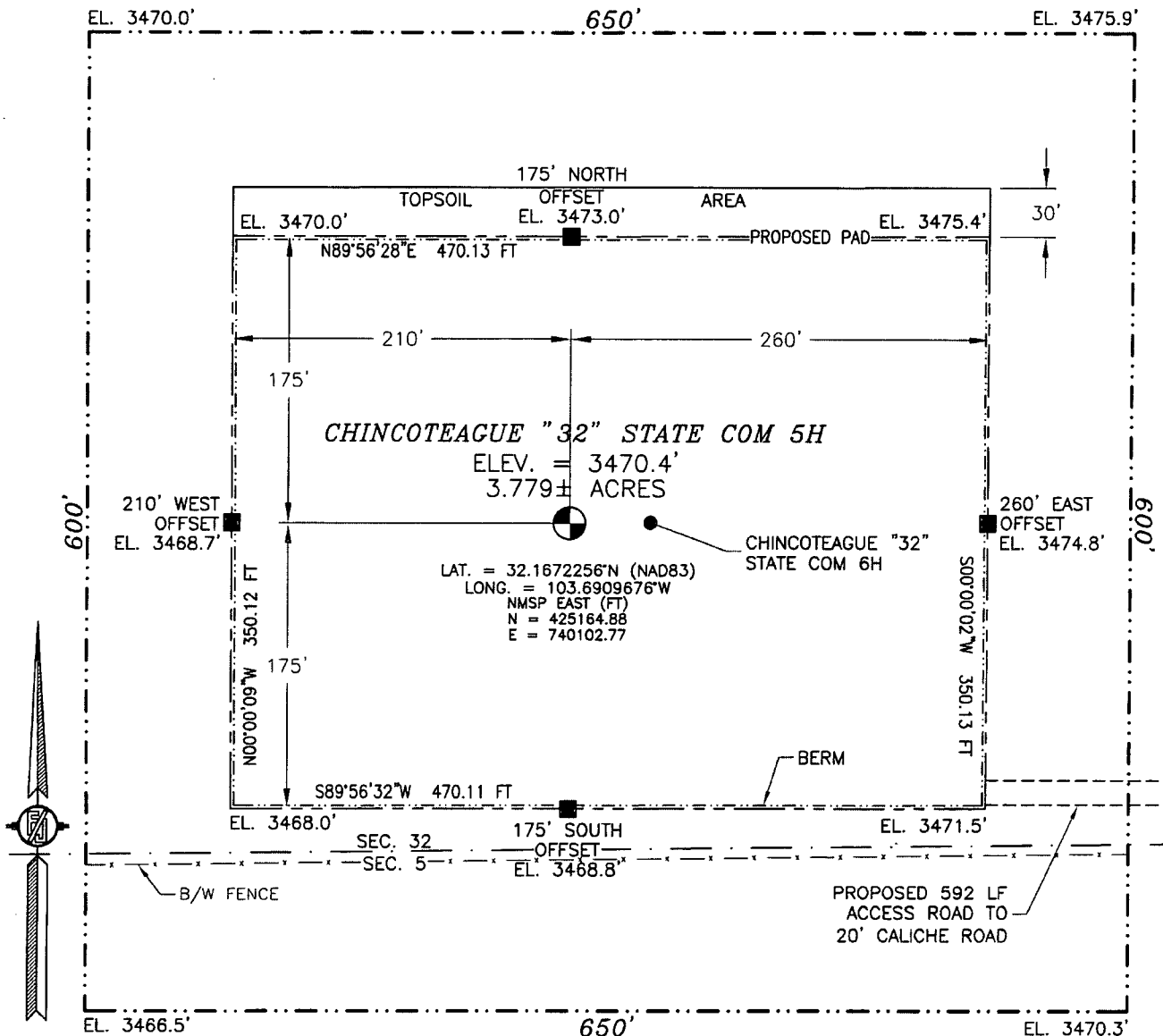
OCTOBER 2, 2014
Date of Survey

[Signature]
Signature and Seal of Professional Surveyor
Certificate Number FIFIMON F. JARANIHO, PLS 12797
SURVEY NO. 3347

NOV 13 2014

SECTION 32, TOWNSHIP 24 SOUTH, RANGE 32 EAST, N.M.P.M.
LEA COUNTY, STATE OF NEW MEXICO
SITE MAP

NOTE: LATITUDE AND LONGITUDE COORDINATES ARE SHOWN USING THE NORTH AMERICAN DATUM OF 1983 (NAD83). LISTED NEW MEXICO STATE PLANE EAST COORDINATES ARE GRID (NAD83). BASIS OF BEARING AND DISTANCES USED ARE NEW MEXICO STATE PLANE EAST COORDINATES MODIFIED TO THE SURFACE



010 50 100 200
SCALE 1" = 100'

DIRECTIONS TO LOCATION

FROM STATE HIGHWAY 128 AND CR 1 (ORLA ROAD) GO SOUTH ON CR 1 2.4 MILES, TURN RIGHT ON CALICHE ROAD AND GO WEST 1.0 MILES, TURN LEFT AND GO SOUTH 0.5 MILES, BEND RIGHT AND GO WEST 0.1 MILES, TURN LEFT AND GO SOUTH-SOUTHEAST 0.5 MILES TO A PROPOSED ROAD SURVEY AND FOLLOW FLAGS WEST 592' TO THE PROPOSED SOUTHEAST PAD CORNER FOR THIS LOCATION.

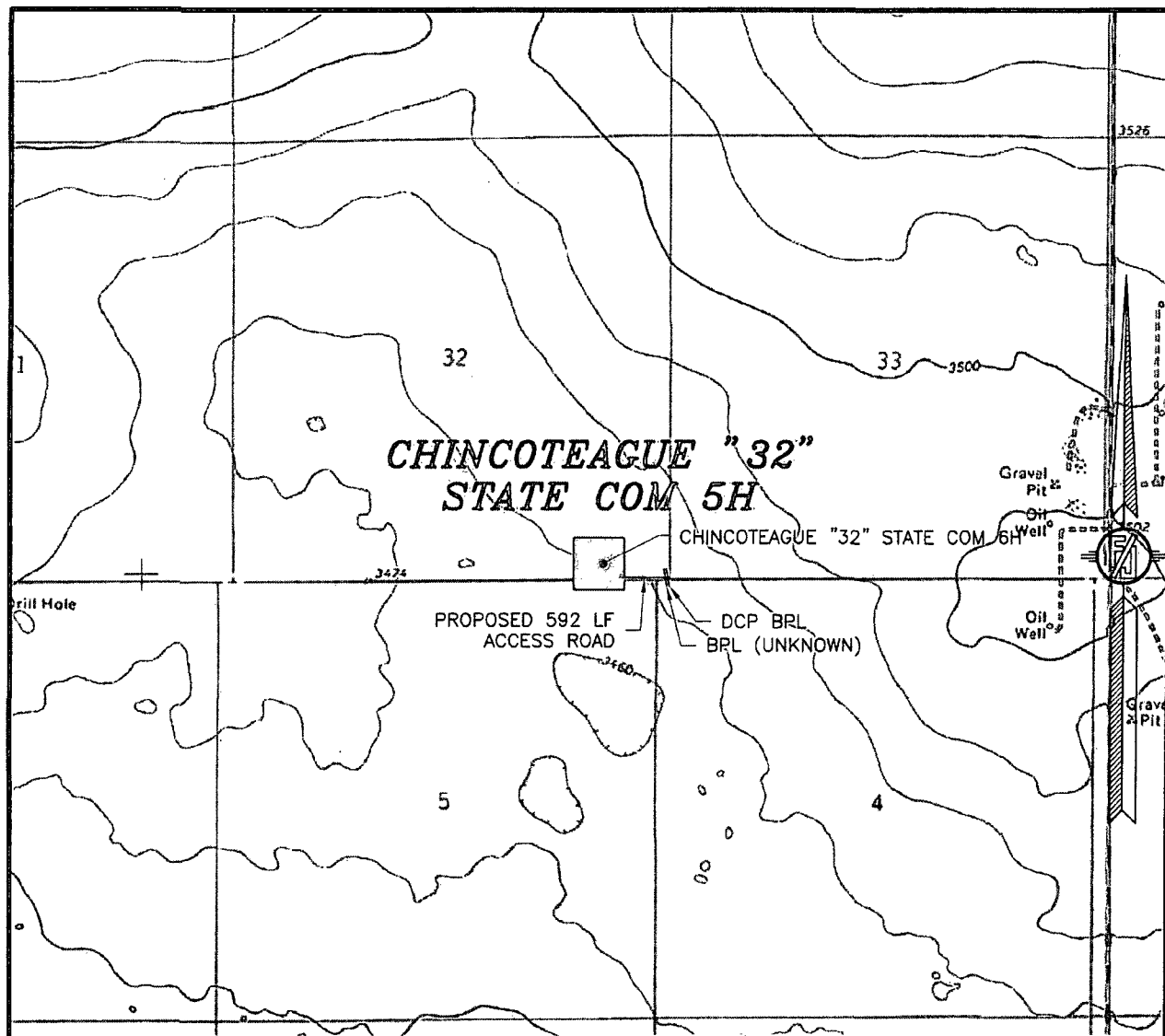
DEVON ENERGY PRODUCTION COMPANY, L.P.
CHINCOTEAGUE "32" STATE COM 5H
LOCATED 200 FT. FROM THE SOUTH LINE
AND 880 FT. FROM THE EAST LINE OF
SECTION 32, TOWNSHIP 24 SOUTH,
RANGE 32 EAST, N.M.P.M.
LEA COUNTY, STATE OF NEW MEXICO

OCTOBER 2, 2014

SURVEY NO. 3347

MADRON SURVEYING, INC. 301 SOUTH CANAL (575) 234-3341 CARLSBAD, NEW MEXICO

SECTION 32, TOWNSHIP 24 SOUTH, RANGE 32 EAST, N.M.P.M.
LEA COUNTY, STATE OF NEW MEXICO
LOCATION VERIFICATION MAP



USGS QUAD MAP:
PADUCA BREAKS NW

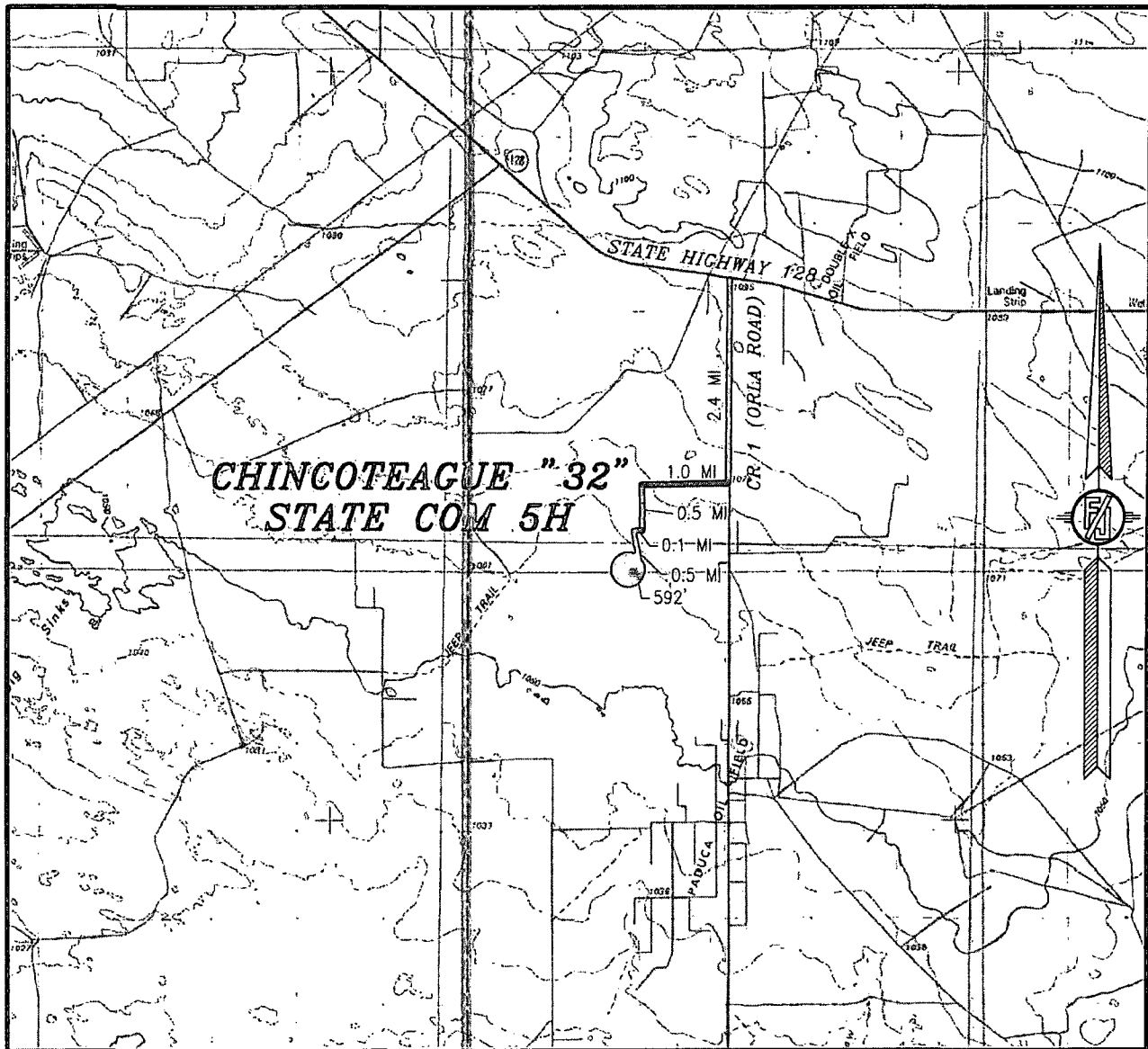
NOT TO SCALE

DEVON ENERGY PRODUCTION COMPANY, L.P.
CHINCOTEAGUE "32" STATE COM 5H
LOCATED 200 FT. FROM THE SOUTH LINE
AND 880 FT. FROM THE EAST LINE OF
SECTION 32, TOWNSHIP 24 SOUTH,
RANGE 32 EAST, N.M.P.M.
LEA COUNTY, STATE OF NEW MEXICO

OCTOBER 2, 2014

MADRON SURVEYING, INC. 301 SOUTH CANAL (575) 234-3341 CARLSBAD, NEW MEXICO SURVEY NO. 3347

SECTION 32, TOWNSHIP 24 SOUTH, RANGE 32 EAST, N.M.P.M.
LEA COUNTY, STATE OF NEW MEXICO
VICINITY MAP



DISTANCES IN MILES

NOT TO SCALE

DEVON ENERGY PRODUCTION COMPANY, L.P.

CHINCOTEAGUE "32" STATE COM 5H

LOCATED 200 FT. FROM THE SOUTH LINE

AND 880 FT. FROM THE EAST LINE OF

SECTION 32, TOWNSHIP 24 SOUTH,

RANGE 32 EAST, N.M.P.M.

LEA COUNTY, STATE OF NEW MEXICO

DIRECTIONS TO LOCATION

FROM STATE HIGHWAY 128 AND CR 1 (ORLA ROAD) GO SOUTH ON CR 1 2.4 MILES, TURN RIGHT ON CALICHE ROAD AND GO WEST 1.0 MILES, TURN LEFT AND GO SOUTH 0.5 MILES, BEND RIGHT AND GO WEST 0.1 MILES, TURN LEFT AND GO SOUTH-SOUTHEAST 0.5 MILES TO A PROPOSED ROAD SURVEY AND FOLLOW FLAGS WEST 592' TO THE PROPOSED SOUTHEAST PAD CORNER FOR THIS LOCATION.

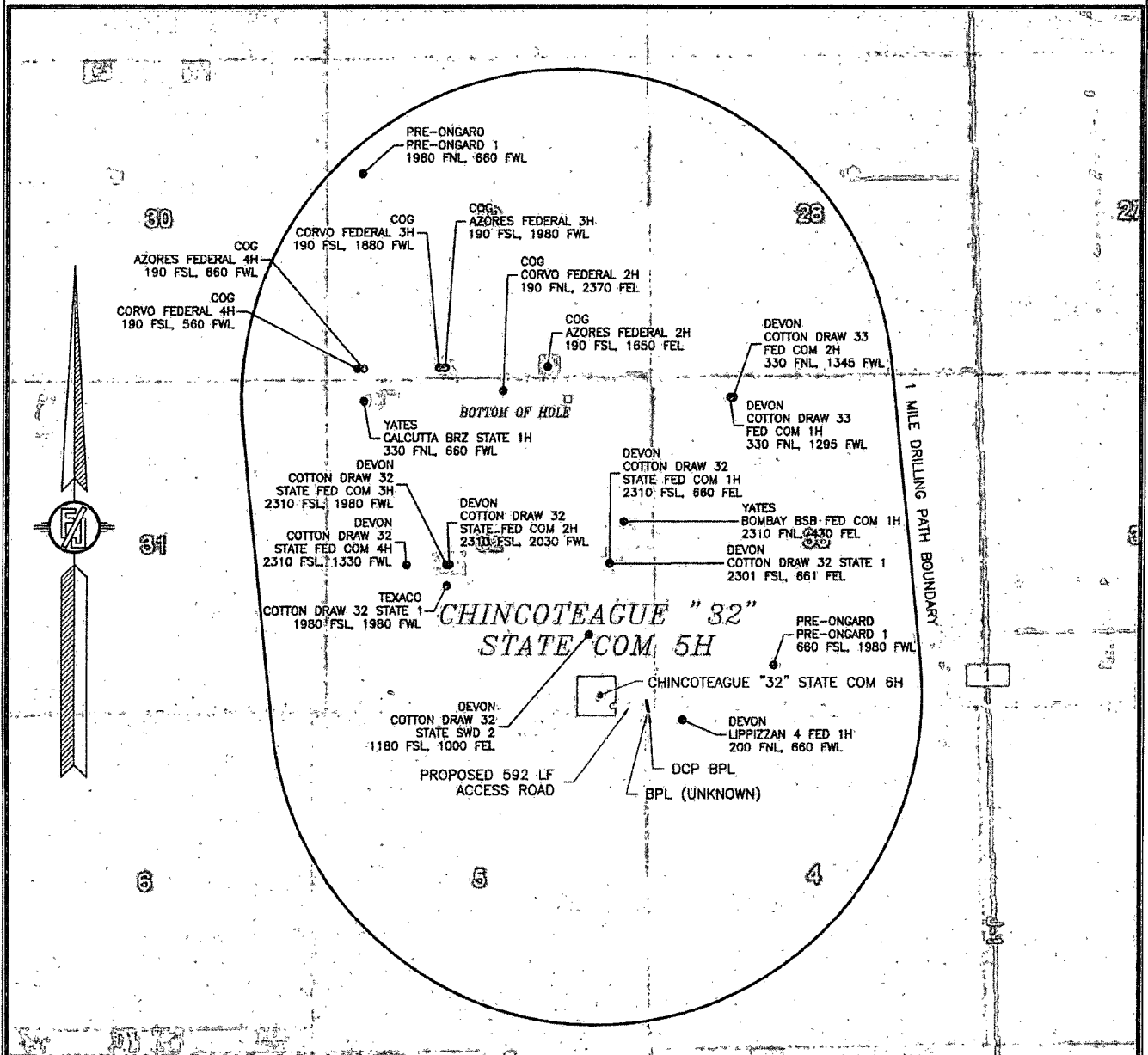
OCTOBER 2, 2014

SURVEY NO. 3347

MADRON SURVEYING, INC. 301 SOUTH CANAL (575) 234-3341

CARLSBAD, NEW MEXICO

SECTION 32, TOWNSHIP 24 SOUTH, RANGE 32 EAST, N.M.P.M.
LEA COUNTY, STATE OF NEW MEXICO
AERIAL PHOTO



NOT TO SCALE
AERIAL PHOTO:
GOOGLE EARTH
FEBRUARY 2014

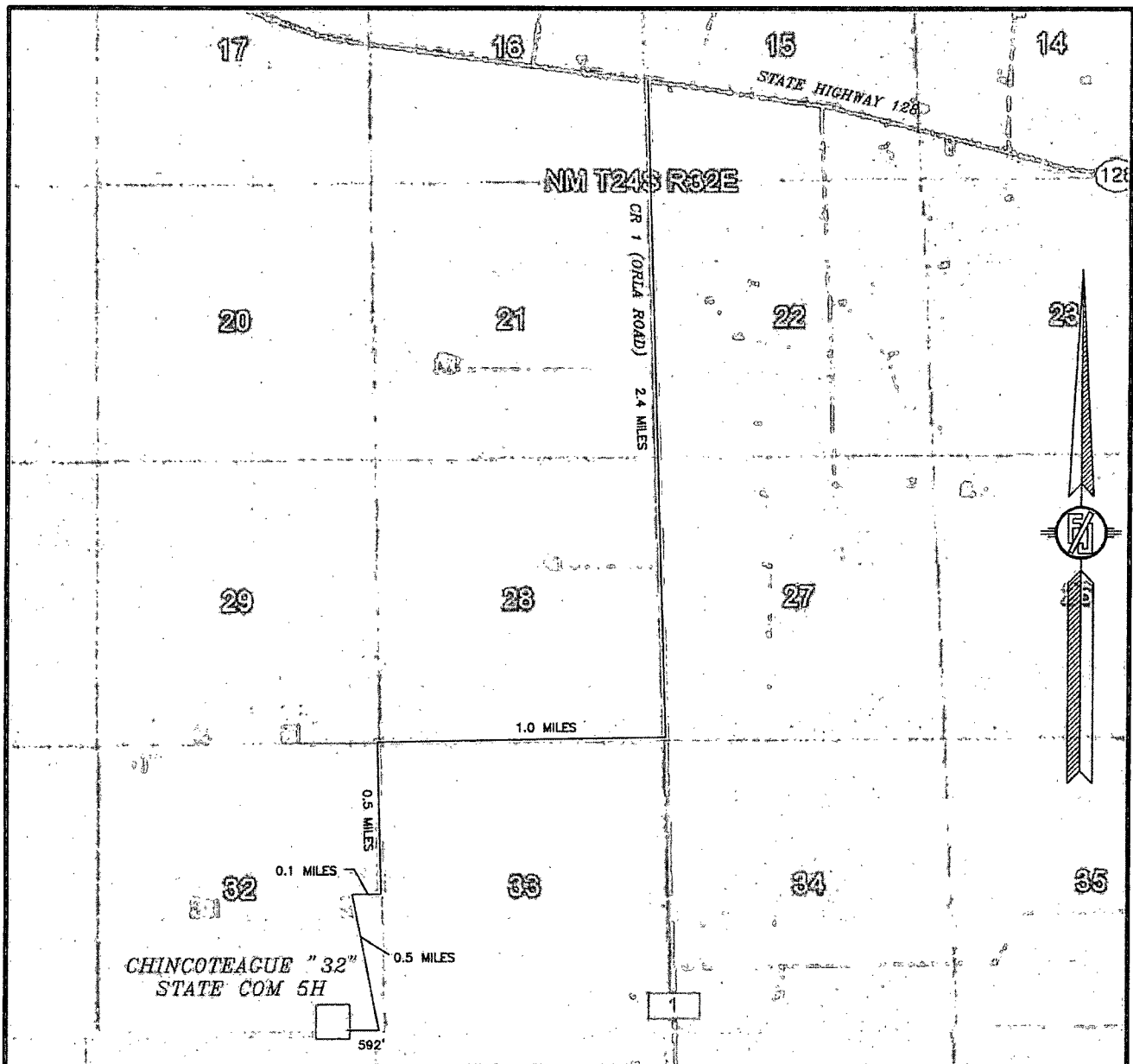
DEVON ENERGY PRODUCTION COMPANY, L.P.
CHINCOTEAGUE "32" STATE COM 5H
LOCATED 200 FT. FROM THE SOUTH LINE
AND 880 FT. FROM THE EAST LINE OF
SECTION 32, TOWNSHIP 24 SOUTH,
RANGE 32 EAST, N.M.P.M.
LEA COUNTY, STATE OF NEW MEXICO

OCTOBER 2, 2014

SURVEY NO. 3347

MADRON SURVEYING, INC. 301 SOUTH CANAL (575) 234-3341 CARLSBAD, NEW MEXICO

SECTION 32, TOWNSHIP 24 SOUTH, RANGE 32 EAST, N.M.P.M.
LEA COUNTY, STATE OF NEW MEXICO
ACCESS AERIAL ROUTE MAP



NOT TO SCALE
AERIAL PHOTO:
GOOGLE EARTH
FEBRUARY 2014

DEVON ENERGY PRODUCTION COMPANY, L.P.

CHINCOTEAGUE "32" STATE COM 5H

LOCATED 200 FT. FROM THE SOUTH LINE
AND 880 FT. FROM THE EAST LINE OF
SECTION 32, TOWNSHIP 24 SOUTH,
RANGE 32 EAST, N.M.P.M.
LEA COUNTY, STATE OF NEW MEXICO

OCTOBER 2, 2014

SURVEY NO. 3347

MADRON SURVEYING, INC. 301 SOUTH CANAL (575) 234-3341 CARLSBAD, NEW MEXICO