

# H<sub>2</sub>S Preparedness and Contingency Plan Summary



**Salado Draw 18 26 33 Fed 3H**

**Salado Draw 18 26 33 Fed 4H**

**Salado Draw 19 26 33 Fed 3H**

**Salado Draw 19 26 33 Fed 4H**

## Training

MCBU Drilling and Completions H<sub>2</sub>S training requirements are intended to define the minimum level of training required for employees, contractors and visitors to enter or perform work at MCBU Drilling and Completions locations that have known concentrations of H<sub>2</sub>S.

### Awareness Level

Employees and visitors to MCBU Drilling and Completions locations that have known concentrations of H<sub>2</sub>S, who are not required to perform work in H<sub>2</sub>S areas, will be provided with an awareness level of H<sub>2</sub>S training prior to entering any H<sub>2</sub>S areas. At a minimum, awareness level training will include:

1. Physical and chemical properties of H<sub>2</sub>S
2. Health hazards of H<sub>2</sub>S
3. Personal protective equipment
4. Information regarding potential sources of H<sub>2</sub>S
5. Alarms and emergency evacuation procedures

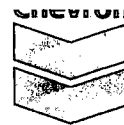
Awareness level training will be developed and conducted by personnel who are qualified either by specific training, educational experience and/or work-related background.

### Advanced Level H<sub>2</sub>S Training

Employees and contractors required to work in areas that may contain H<sub>2</sub>S will be provided with Advanced Level H<sub>2</sub>S training prior to initial assignment. In addition to the Awareness Level requirements, Advanced Level H<sub>2</sub>S training will include:

1. H<sub>2</sub>S safe work practice procedures;
2. Emergency contingency plan procedures;
3. Methods to detect the presence or release of H<sub>2</sub>S (e.g., alarms, monitoring equipment), including hands-on training with direct reading and personal monitoring H<sub>2</sub>S equipment.
4. Basic overview of respiratory protective equipment suitable for use in H<sub>2</sub>S environments. Note: Employees who work at sites that participate in the Chevron Respirator User program will require separate respirator training as required by the MCBU Respiratory Protection Program;
5. Basic overview of emergency rescue techniques, first aid, CPR and medical evaluation procedures. Employees who may be required to perform "standby" duties are required to receive additional first aid and CPR training, which is not covered in the Advanced Level H<sub>2</sub>S training;
6. Proficiency examination covering all course material.

Advanced H<sub>2</sub>S training courses will be instructed by personnel who have successfully completed an appropriate H<sub>2</sub>S train-the-trainer development course (ANSI/ASSE Z390.1-2006) or who possess significant past experience through educational or work-related background.



## H<sub>2</sub>S Training Certification

All employees and visitors will be issued an H<sub>2</sub>S training certification card (or certificate) upon successful completion of the appropriate H<sub>2</sub>S training course. Personnel working in an H<sub>2</sub>S environment will carry a current H<sub>2</sub>S training certification card as proof of having received the proper training on their person at all times.

## Briefing Area

A minimum of two briefing areas will be established in locations that at least one area will be upwind from the well at all times. Upon recognition of an emergency situation, all personnel should assemble at the designated upwind briefing areas for instructions.

## H<sub>2</sub>S Equipment

### Respiratory Protection

- a) Six 30 minute SCBAs – 2 at each briefing area and 2 in the Safety Trailer.
- b) Eight 5 minute EBAs – 5 in the dog house at the rig floor, 1 at the accumulator, 1 at the shale shakers and 1 at the mud pits.

### Visual Warning System

- a) One color code sign, displaying all possible conditions, will be placed at the entrance to the location with a flag displaying the current condition.
- b) Two windsocks will be on location, one on the dog house and one on the Drill Site Manager's Trailer.

## H<sub>2</sub>S Detection and Monitoring System

- a) H<sub>2</sub>S monitoring system (sensor head, warning light and siren) placed throughout rig.
  - Drilling Rig Locations: at a minimum, in the area of the Shale shaker, rig floor, and bell nipple.
  - Workover Rig Locations: at a minimum, in the area of the Cellar, rig floor and circulating tanks or shale shaker.



## Well Control Equipment

- a) Flare Line 150' from wellhead with igniter.
- b) Choke manifold with a remotely operated choke.
- c) Mud / gas separator

## Mud Program

In the event of drilling, completions, workover and well servicing operations involving a hydrogen sulfide concentration of 100 ppm or greater the following shall be considered:

- 1. Use of a degasser
- 2. Use of a zinc based mud treatment
- 3. Increasing mud weight

## Public Safety - Emergency Assistance

<u>Agency</u>	<u>Telephone Number</u>
Lea County Sheriff's Department	575-396-3611
Fire Department:	
Carlsbad	575-885-3125
Artesia	575-746-5050
Lea County Regional Medical Center	575-492-5000
Jal Community Hospital	505-395-2511
Lea County Emergency Management	575-396-8602
Poison Control Center	800-222-1222

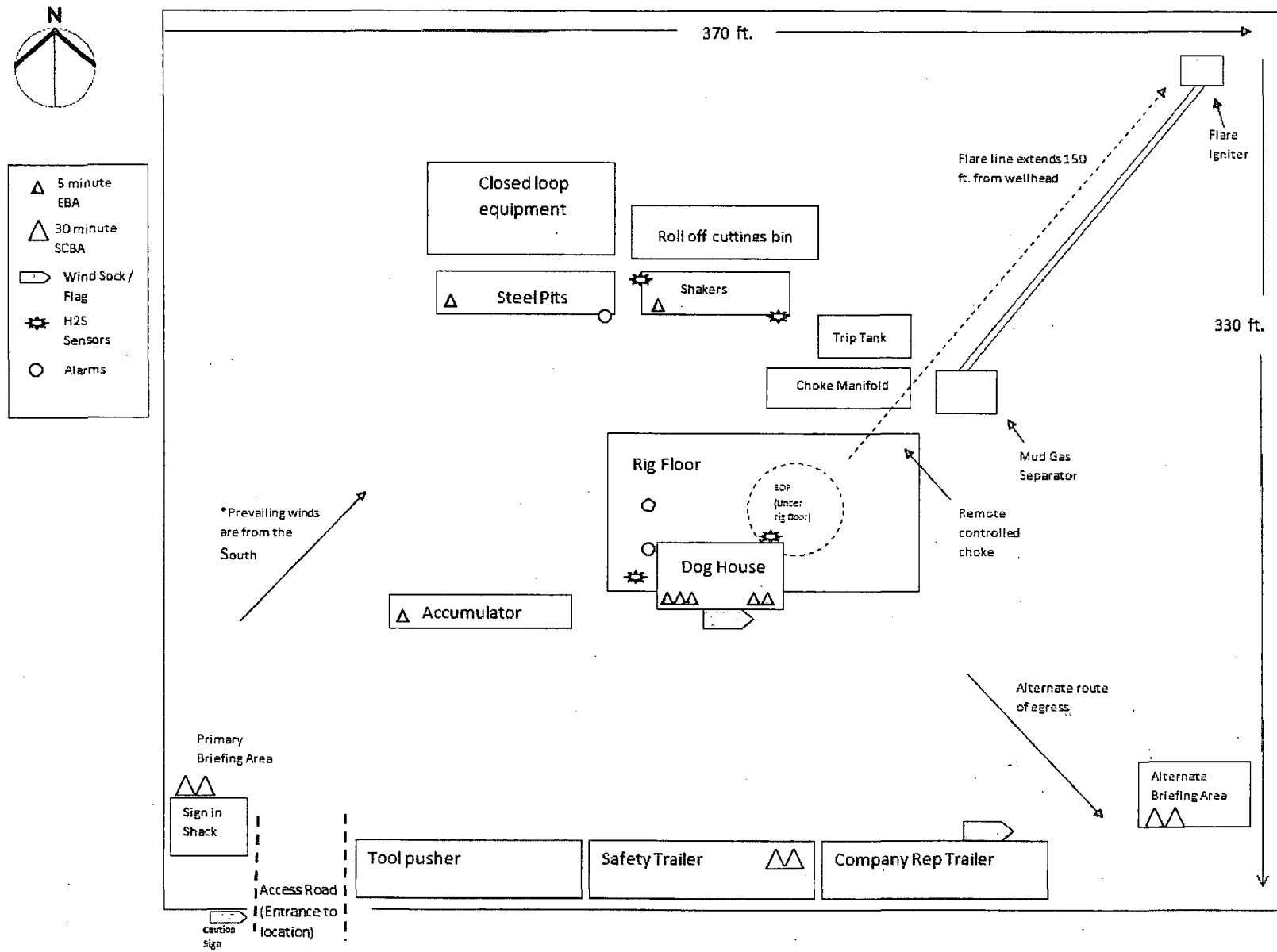


## Chevron MCBU D&C Emergency Notifications

Below are lists of contacts to be used in emergency situations.

	Name	Title	Office Number	Cell Phone
1.	Vicente Ruiz	Drilling Engineer	(713) 372-6181	(713) 898-5436
2.	Phil Clark	Superintendent	(713) 372-7588	(832) 741-4175
5.	Kim McHugh	Drilling Manager	(713) 372-7591	(713) 204- 8550
6.	Darrell Hammons	Operations Manager	(713) 372-5747	(281) 352 2302
7.	Andrea Calhoun	D&C HES	(713) 372-7586	(832) 588-0100
8.	Said Daher	Completion Engineer	(713) 372-0233	(832) 714-0724

# H<sub>2</sub>S Preparedness and Contingency Plan Summary



Salado Draw 19-26-33 Fed 3H, 4H

# EXHIBIT E

## NOTE

Please be advised, that while reasonable efforts are made to locate and verify pipelines and anomalies using our standard pipeline locating equipment, it is impossible to be 100% effective. As such, we advise using caution when performing work as there is a possibility that pipelines and other hazards, such as fiber optic cables, PVC pipelines, etc. may exist undetected on site.

## NOTE

Many states maintain information centers that establish links between those who dig (excavators) and those who own and operate underground facilities (operators). It is advisable and in most states, law, for the contractor to contact the center for assistance in locating and marking underground utilities. For guidance, New Mexico One Call - [www.nmonecall.org](http://www.nmonecall.org)

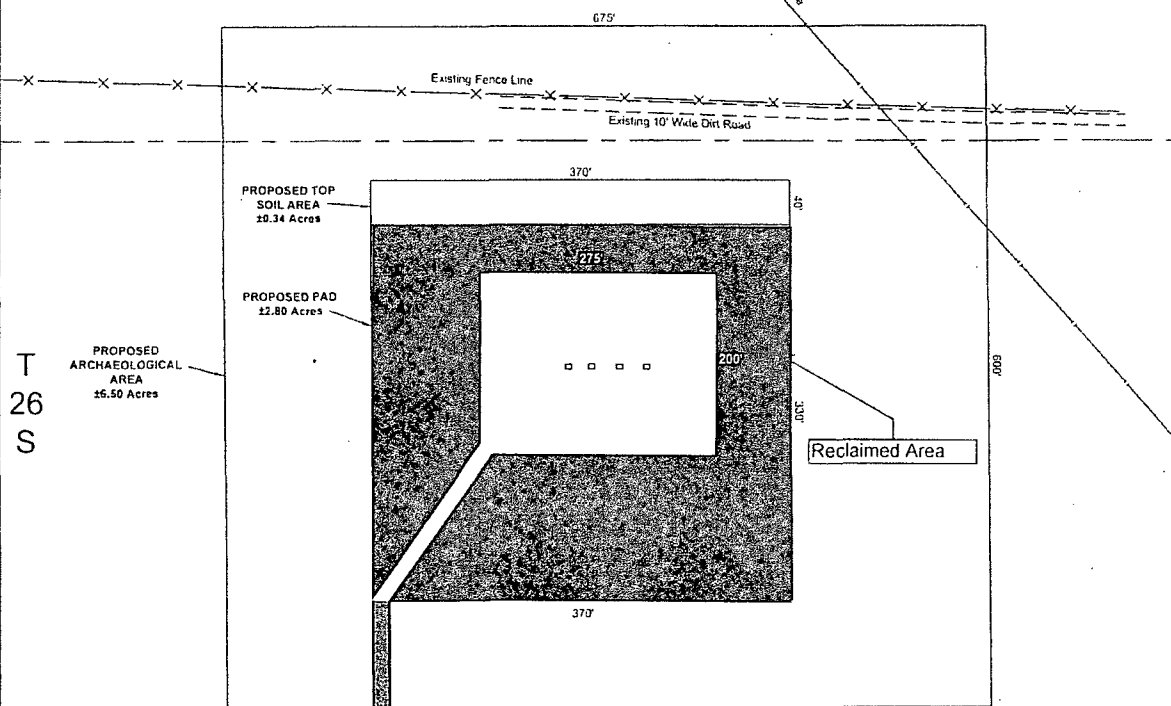
**DISCLAIMER:** At this time, C.H. Fenstermaker & Associates, LLC has not performed nor was asked to perform any type of engineering, hydrological modeling, flood plain, or "No Rise" certification analyses, including but not limited to determining whether the project will impact flood hazards in connection with federal FEMA, state, and/or local laws, ordinances and regulations. Accordingly, Fenstermaker makes no warranty or representation of any kind as to the foregoing issues, and persons or entities using this information shall do so at their own risk.

NW ARCH. AREA CORNER	NE ARCH. AREA CORNER	SE ARCH. AREA CORNER	SW ARCH. AREA CORNER	SALADO DRAW 18 26 33 FED 3H WELL
X= 727.889 NAD 27 Y= 377.715 ELEVATION -3187 NAVD 88	X= 723.564 NAD 27 Y= 377.721 ELEVATION -3150 NAVD 88	X= 723.569 NAD 27 Y= 377.121 ELEVATION -3155 NAVD 88	X= 722.834 NAD 27 Y= 377.115 ELEVATION -3189 NAVD 88	X= 723.192 NAD 27 Y= 377.418 LAT. 32 03 55.9 LONG. 103 61 30.9
NW TOP SOIL AREA CORNER	NE TOP SOIL AREA CORNER	SE TOP SOIL AREA CORNER	SW TOP SOIL AREA CORNER	SE PAD CORNER
X= 723.020 NAD 27 Y= 377.582 ELEVATION -3189 NAVD 88	X= 723.560 NAD 27 Y= 377.584 ELEVATION -3190 NAVD 88	X= 723.391 NAD 27 Y= 377.544 ELEVATION -3190 NAVD 88	X= 723.021 NAD 27 Y= 377.542 ELEVATION -3189 NAVD 88	X= 723.393 NAD 27 Y= 377.214 ELEVATION -3192 NAVD 88
NW CORNER PAD CORNER	NE CORNER PAD CORNER	SE CORNER PAD CORNER	SW CORNER PAD CORNER	SW PAD CORNER
X= 723.020 NAD 27 Y= 377.582 ELEVATION -3189 NAVD 88	X= 723.560 NAD 27 Y= 377.584 ELEVATION -3190 NAVD 88	X= 723.391 NAD 27 Y= 377.544 ELEVATION -3190 NAVD 88	X= 723.021 NAD 27 Y= 377.542 ELEVATION -3189 NAVD 88	X= 723.021 NAD 27 Y= 377.212 ELEVATION -3191 NAVD 88

R 33 E

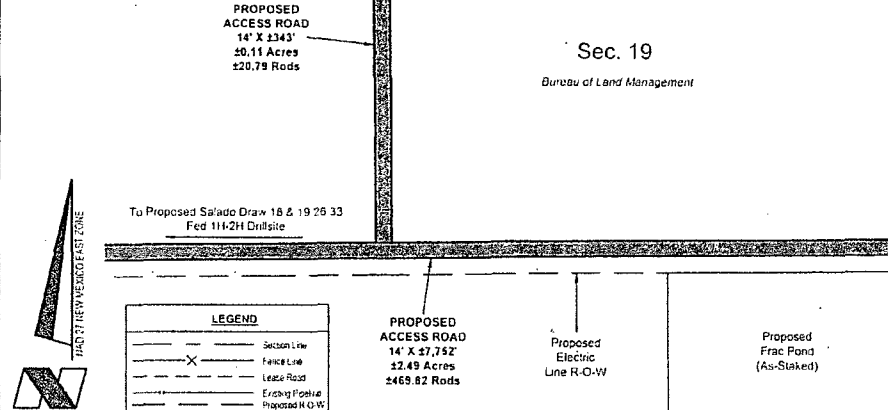
Sec. 18

Bureau of Land Management



Sec. 19

Bureau of Land Management



FOR THE EXCLUSIVE USE OF  
CHEVRON U.S.A. INC.  
I, WM. J. DANIEL III, Registered Professional  
Land Surveyor, do hereby state this plat is true  
and correct to the best of my knowledge.



CHEVRON U.S.A. INC.  
PROPOSED PAD & ACCESS ROADS  
SALADO DRAW 18 26 33 FED 3H WELL  
SECTION 19, T26S-R33E  
LEA COUNTY, NEW MEXICO

Page 1 of 2



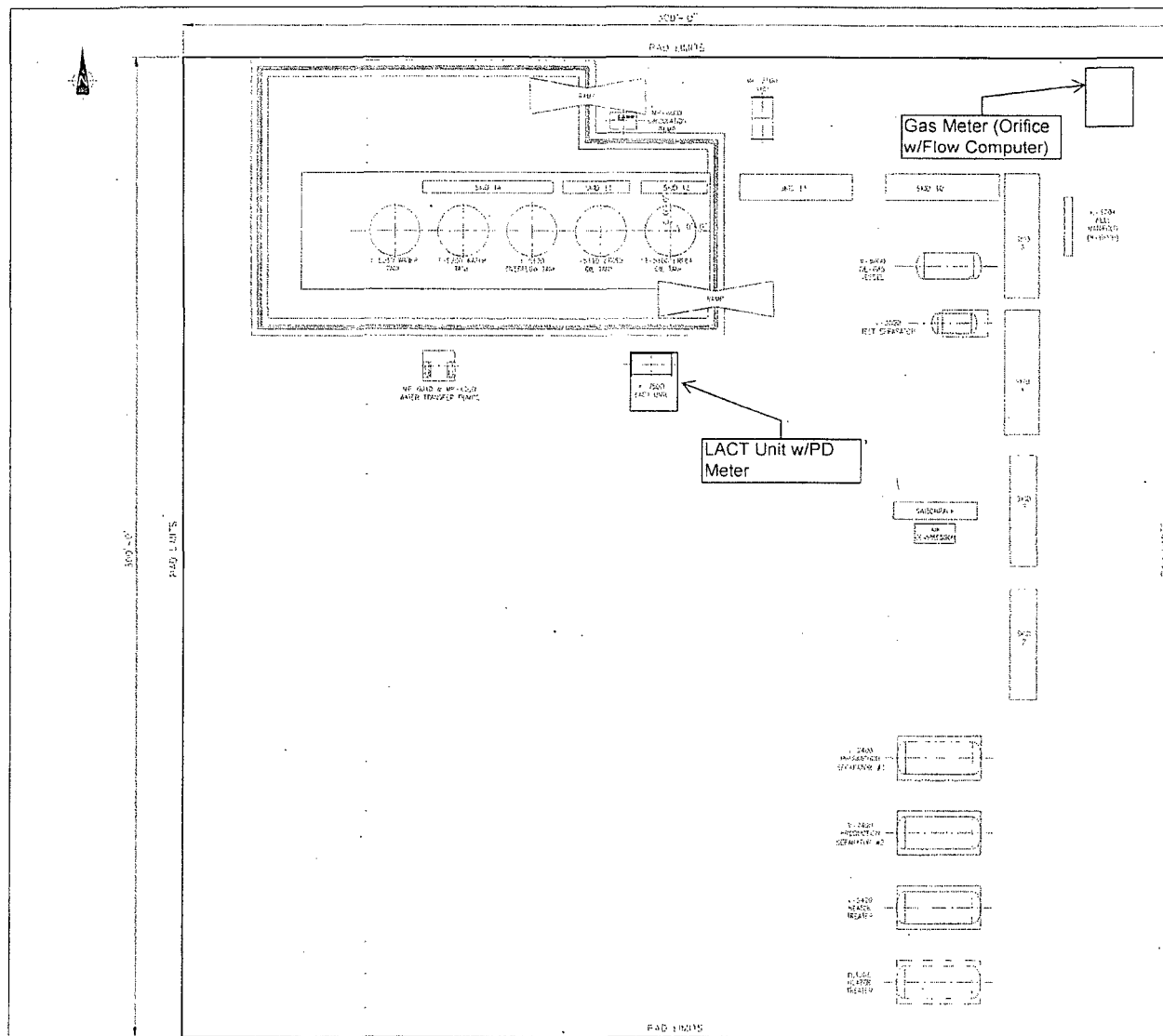
135 Regency Sq., Lafayette, LA 70509  
Ph. 337-237-2300 Fax. 337-232-3299  
[www.fenstermaker.com](http://www.fenstermaker.com)

Scale: 1"=100'

100' 0 50' 100'

DRAWN BY: BMO		REVISIONS	
PROJ. MGR.: VHV	No. 1	DATE: 05/28/2014	REVISED BY: VHV
DATE: APRIL 23, 2014	No.	DATE:	REVISED BY:
FILENAME: T:\2014\2144695\DWG\Salado Draw 18 26 33 Fed 3H_SUP.dwg			

EXHIBIT C



1. DESIGN AND CONSTRUCTION 2. SALADO DRAW CTB-LEA COUNTY, NEW MEXICO	3. DESIGN AND CONSTRUCTION 4. SALADO DRAW CTB-LEA COUNTY, NEW MEXICO	5. DESIGN AND CONSTRUCTION 6. SALADO DRAW CTB-LEA COUNTY, NEW MEXICO	ISSUED FOR REVIEW	Chevron U.S.A. Inc.	HOBBS FARM DELAWARE BASIN SALADO DRAW CTB-LEA COUNTY, NEW MEXICO
7. DESIGN AND CONSTRUCTION 8. SALADO DRAW CTB-LEA COUNTY, NEW MEXICO	9. DESIGN AND CONSTRUCTION 10. SALADO DRAW CTB-LEA COUNTY, NEW MEXICO	11. DESIGN AND CONSTRUCTION 12. SALADO DRAW CTB-LEA COUNTY, NEW MEXICO		HOBBS-SALADODRAWCTB-CIV-PLT-MCB-2000-01	HOBBS-SALADODRAWCTB-CIV-PLT-MCB-2000-01

R 32 E

T  
26  
S

Sec. 15

Bureau of Land Management

Sec. 14

Bureau of Land Management

Existing  
Kiehne Ranch  
15 26 32 USA 1H  
DrillSite

Existing  
Lease Road to  
be used

±3846', ±1.59 Acres

Existing  
Red Hills West  
22 Fed Corn 1H  
DrillSite

±842',  
±0.27  
Acres

PROPOSED  
ACCESS ROAD  
±19,950', ±6.41 ACRES

±5431', ±1.75 Acres

Sec. 22

Bureau of Land Management

Sec. 23

Bureau of Land Management

FOR THE EXCLUSIVE USE OF  
CHEVRON U.S.A. INC.  
I, WM. J. DANIEL III, Registered Professional  
Land Surveyor, do hereby state this plat is true  
and correct to the best of my knowledge.



**NOTE:**

Please be advised, that while reasonable efforts are made to locate and verify pipelines and anomalies using our standard pipeline locating equipment, it is impossible to be 100 % effective. As such, we advise using caution when performing work as there is a possibility that pipelines and other hazards, such as fiber optic cables, PVC pipelines, etc. may exist undetected on site.

**NOTE:**

Many states maintain information centers that establish links between those who dig (excavators) and those who own and operate underground facilities (operators). It is advisable and in most states, law, for the contractor to contact the center for assistance in locating and marking underground utilities. For guidance: New Mexico One Call - [www.americalone.org](http://www.americalone.org)

**DISCLAIMER:** At this time, C.H. Fenstermaker & Associates, LLC has not performed nor was asked to perform any type of engineering, hydrological modeling, flood plain, or "No Risk" certification analyses, including but not limited to determining whether the project will impact flood hazards in connection with federal/FEMA, state, and/or local laws, ordinances and regulations. Accordingly, Fenstermaker makes no warranty or representation of any kind as to the foregoing issues, and persons or entities using this information shall do so at their own risk.

SCALE: 1"=600'

600' 0 300' 600'

**DETAIL**

**CHEVRON U.S.A. INC.**  
**ACCESS ROAD**

**DETAIL**  
**SECTIONS 22, 23 & 24, T26S-R32E & SECTIONS 19 & 29, T26S-R33E**  
**LEA COUNTY, NEW MEXICO**

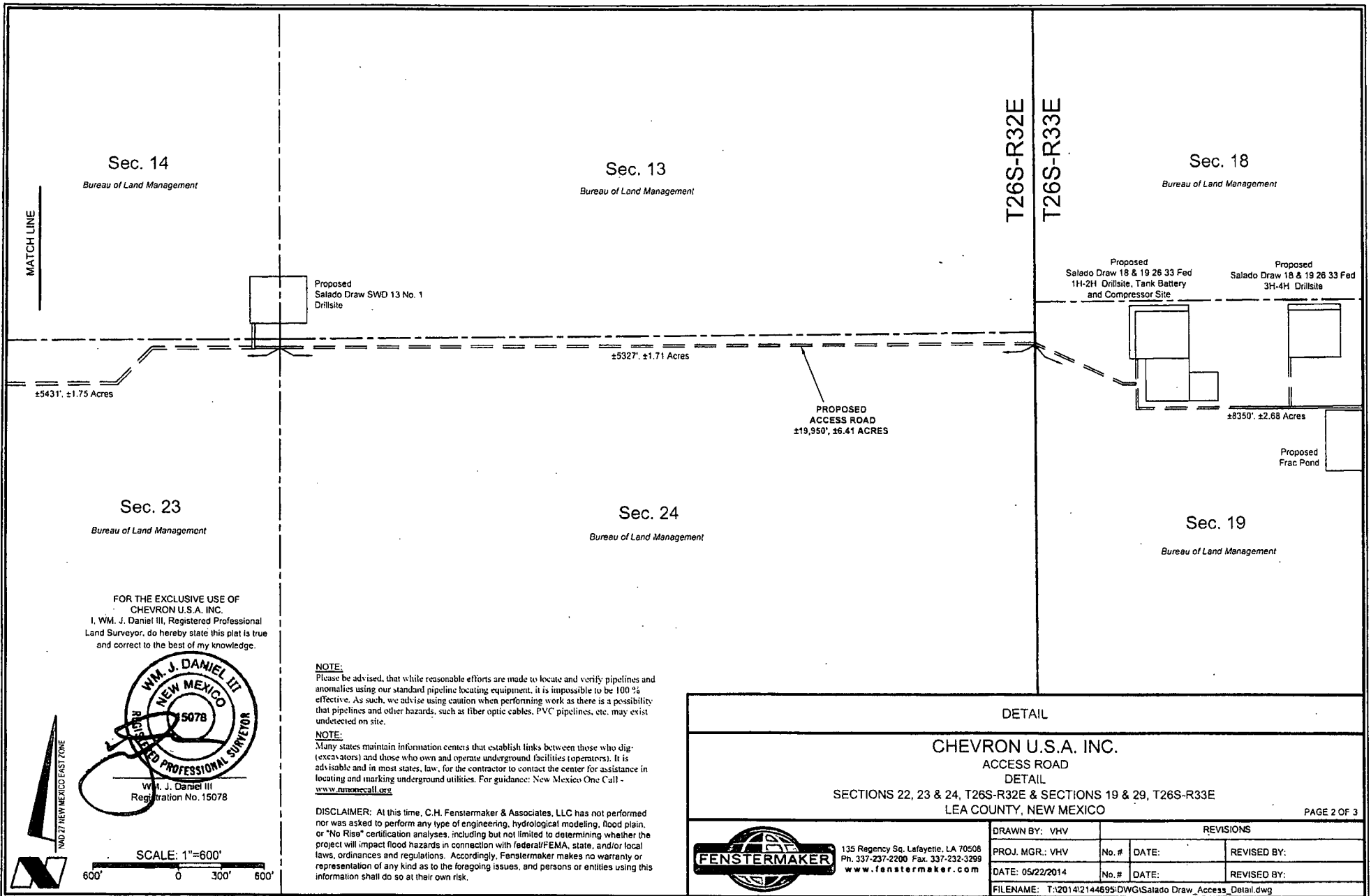
PAGE 1 OF 3



135 Regency Sq. Lafayette, LA 70508  
Ph. 337-237-2200 Fax. 337-232-3299  
[www.fenstermaker.com](http://www.fenstermaker.com)

DRAWN BY: VHV		REVISIONS	
PROJ. MGR.: VHV	No. #	DATE:	REVISED BY:
DATE: 05/22/2014	No. #	DATE:	REVISED BY:
FILENAME: T:\2014\2144695\DWG\Salado Draw_Access_Detail.dwg			





T26S-R32E  
T26S-R33E

Sec. 18

Bureau of Land Management

**NOTE:**

Please be advised, that while reasonable efforts are made to locate and verify pipelines and anomalies using our standard pipeline locating equipment, it is impossible to be 100% effective. As such, we advise using caution when performing work as there is a possibility that pipelines and other hazards, such as fiber optic cables, PVC pipelines, etc. may exist undetected on site.

**NOTE:**

Many states maintain information centers that establish links between those who dig (excavators) and those who own and operate underground facilities (operators). It is advisable and in most states, law, for the contractor to contact the center for assistance in locating and marking underground utilities. For guidance: New Mexico One Call - [www.nmonecall.org](http://www.nmonecall.org)

**DISCLAIMER:** At this time, C.H. Fenstermaker & Associates, LLC has not performed nor was asked to perform any type of engineering, hydrological modeling, flood plain, or "No Rise" certification analyses, including but not limited to determining whether the project will impact flood hazards in connection with federal/FEMA, state, and/or local laws, ordinances and regulations. Accordingly, Fenstermaker makes no warranty or representation of any kind as to the foregoing issues, and persons or entities using this information shall do so at their own risk.

Proposed  
Salado Draw 18 & 19 26 33 Fed  
1H-2H Drillsite, Tank Battery &  
Compressor Site

Proposed  
Salado Draw 18 & 19 26 33 Fed  
3H-4H Drillsite

Proposed  
Frac Pond

PROPOSED  
ACCESS ROAD  
±19,950', ± 6.41 ACRES

Sec. 19

Bureau of Land Management

Sec. 20

Bureau of Land Management

Existing Lease Road  
to be Used  
±1634', ±0.75 Acres

Existing  
Porter Brown 1H  
Drillsite

Proposed  
Salado Draw 29 26 33  
Fed Corn 1H-4H  
Drillsite & Satellite  
Battery

Proposed  
Salado Draw 29 26 33  
Fed Corn 5H-8H  
Drillsite

Proposed  
Moose Tooth 29 26 33  
Fed Corn 1H Drillsite

Existing  
Frac  
Pond

PROPOSED ACCESS  
ROAD  
±3,348', ± 1.08 ACRES

Proposed  
Frac Pond  
Expansion

Sec. 30

Bureau of Land Management

Sec. 29

Bureau of Land Management

FOR THE EXCLUSIVE USE OF  
CHEVRON U.S.A. INC.  
I, WM. J. Daniel III, Registered Professional  
Land Surveyor, do hereby state this plat is true  
and correct to the best of my knowledge.



WM. J. Daniel III  
Registration No. 15078



CHEVRON U.S.A. INC.

ACCESS ROAD  
DETAIL

SECTIONS 22, 23 & 24, T26S-R32E & SECTIONS 19 & 29, T26S-R33E  
LEA COUNTY, NEW MEXICO

PAGE 3 OF 3



135 Regency Sq. Lafayette, LA 70508  
Ph. 337-237-2200 Fax. 337-232-3299  
[www.fenstermaker.com](http://www.fenstermaker.com)

SCALE: 1"=1000'  
1000' 0 500' 1000'

DRAWN BY: VHV		REVISIONS	
PROJ. MGR.: VHV	No. #	DATE:	REVISED BY:
DATE: 05/22/2014	No. #	DATE:	REVISED BY:
FILENAME: T:\2014\2144695\DWG\Salado Draw_Access_Detail.dwg			

METES AND BOUNDS DESCRIPTION OF  
[4] PROPOSED FLOWLINES LOCATED IN  
SECTION 19, T26S-R33E  
LEA COUNTY, NEW MEXICO

SALADO DRAW 18 & 19 26 33 FED 3H & 4H FLOWLINES

SURVEY OF [4] PROPOSED FLOWLINES 1,241.90 FEET OR 75.27 RODS IN LENGTH CROSSING BUREAU OF LAND MANAGEMENT LAND IN THE NORTH-EAST QUARTER OF THE NORTHWEST QUARTER AND THE NORTHWEST QUARTER OF THE NORTHWEST QUARTER OF SECTION 19, TOWNSHIP 26 SOUTH RANGE 33 EAST, N.M.P.M. LEA COUNTY, NEW MEXICO.

COMMENCING AT A FOUND 2" IRON PIPE, LOCATED AT THE NORTH QUARTER CORNER OF SAID SECTION 19 TOWNSHIP 26 SOUTH RANGE 33 EAST, THENCE SOUTH 63 DEGREES 45 MINUTES 35 SECONDS WEST 929.68 FEET TO THE POINT OF BEGINNING. SAID POINT OF BEGINNING HAVING THE FOLLOWING COORDINATES: X= 723,042.25, Y= 377,211.73 (NEW MEXICO STATE PLANE COORDINATE EAST ZONE, NAD 27).

THENCE SOUTH 00 DEGREES 24 MINUTES 08 SECONDS EAST 337.87 FEET;

THENCE SOUTH 89 DEGREES 33 MINUTES 50 SECONDS WEST 518.96 FEET.

THENCE SOUTH 89 DEGREES 34 MINUTES 30 SECONDS WEST 347.00 FEET,

THENCE NORTH 00 DEGREES 24 MINUTES 48 SECONDS WEST 38.07 FEET TO THE POINT OF ENDING. SAID POINT OF ENDING HAVING THE FOLLOWING COORDINATES: X= 722,178.42 Y= 376,905.42 (NEW MEXICO STATE PLANE COORDINATE EAST ZONE, NAD 27).

THE BEARINGS RECITED HEREON ARE ORIENTED TO NEW MEXICO STATE PLANE COORDINATE SYSTEM, EAST ZONE, NAD 27.

THIS DESCRIPTION REPRESENTS A SURVEY MADE ON THE GROUND FOR A SURFACE EASEMENT AND INTENDED SOLELY FOR THAT PURPOSE. THIS DESCRIPTION DOES NOT REPRESENT A BOUNDARY SURVEY.

**NOTE:**

Please be advised, that while reasonable efforts are made to locate and verify pipelines and anomalies using our standard pipeline locating equipment, it is impossible to be 100% effective. As such, we advise using caution when performing work as there is a possibility that pipelines and other hazards, such as fiber optic cables, PVC pipelines, etc. may exist undetected on site.

**NOTE:**

Many states maintain information centers that establish links between those who dig (excavators) and those who own and operate underground facilities (operators). It is advisable and in most states, law, for the contractor to contact the center for assistance in locating and marking underground utilities. For guidance: New Mexico One Call - [www.nmonecall.org](http://www.nmonecall.org)

**DISCLAIMER:** At this time, C.H. Fenstermaker & Associates, LLC has not performed nor was asked to perform any type of engineering, hydrological modeling, flood plain, or "No Rise" certification analyses, including but not limited to determining whether the project will impact flood hazards in connection with federal/FEMA, state, and/or local laws, ordinances and regulations. Accordingly, Fenstermaker makes no warranty or representation of any kind as to the foregoing issues, and persons or entities using this information shall do so at their own risk.

Scale: 1"=200'

200' 0 100' 200'

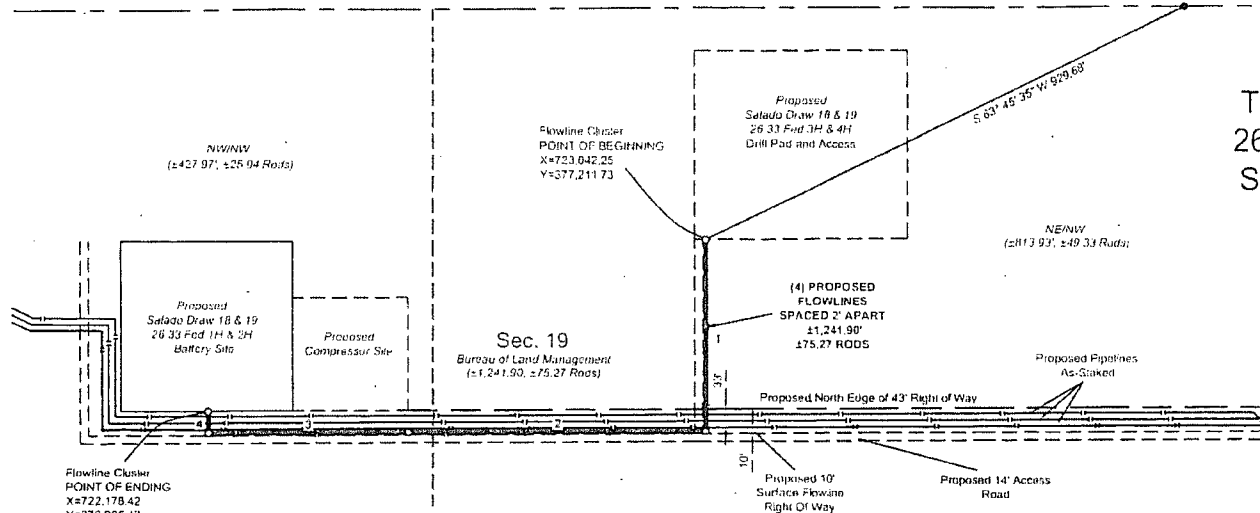
R 33 E

Sec. 18

Bureau of Land Management

POINT OF  
COMMENCEMENT N  
Sec 19 2nd 2" Iron  
Pipe

T  
26  
S



COURSE	BEARING	DISTANCE
1	S 00° 24' 08" E	337.87'
2	S 89° 33' 50" W	518.96'
3	S 89° 34' 30" W	347.00'
4	N 00° 24' 48" W	38.07'

LEGEND	
---	Section Line
- - -	Proposed Flowline
- - -	Proposed Pipeline (Other)
- - -	Proposed Lease Road
- - -	Proposed R-O-W
- - -	Section Break
●	Found Occupation

FOR THE EXCLUSIVE USE OF  
CHEVRON U.S.A. INC.  
I, WM J. Daniel III, Registered Professional  
Land Surveyor, do hereby state this plat is true  
and correct to the best of my knowledge.



Wm. J. Daniel III  
Registration No. 15078

FLOWLINE SUP

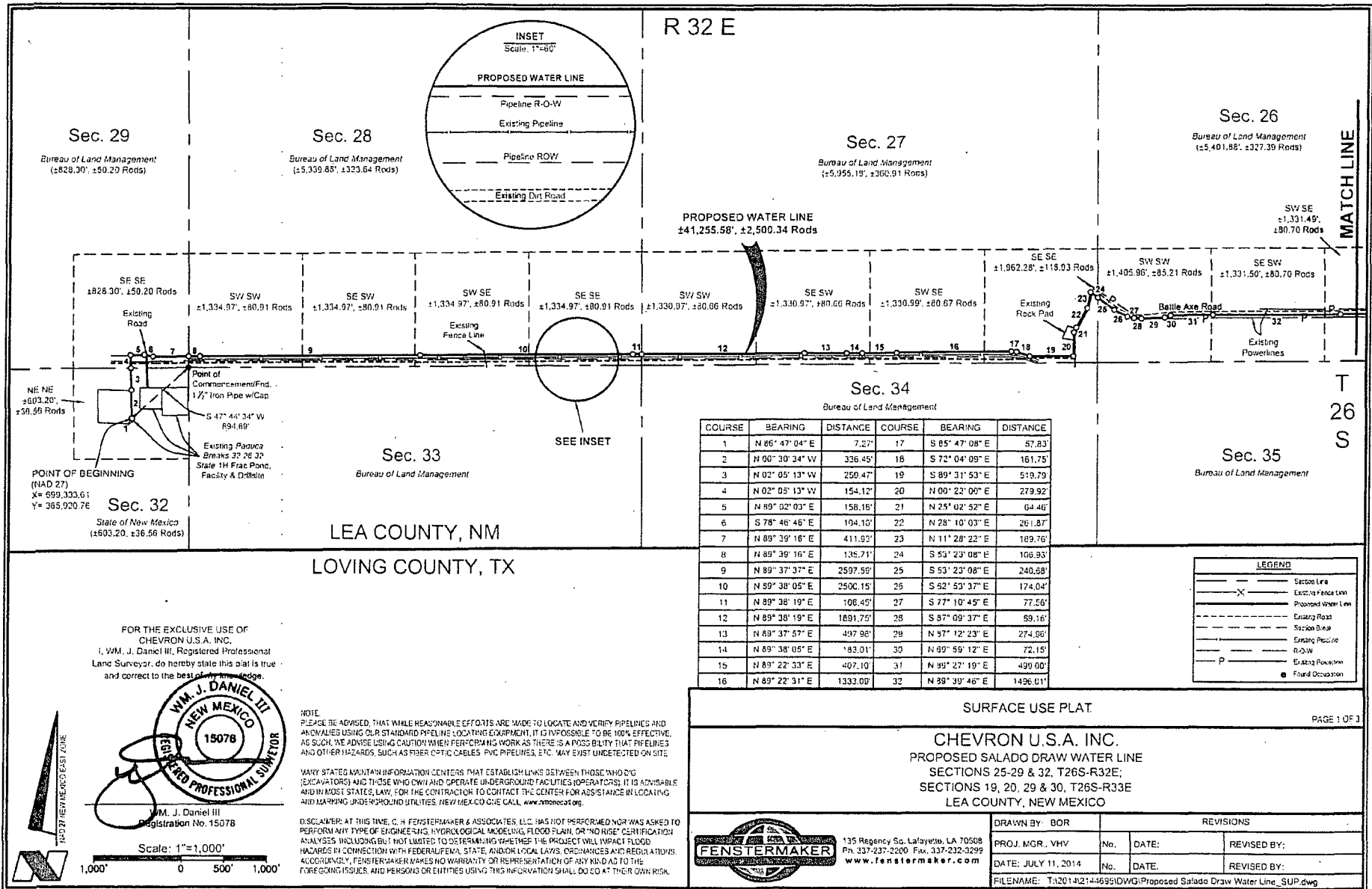
CHEVRON U.S.A. INC.  
PROPOSED FLOWLINES  
SALADO DRAW 18 & 19 26 33 FED 3H & 4H WELLS  
SECTION 19, T26S-R33E  
LEA COUNTY, NEW MEXICO



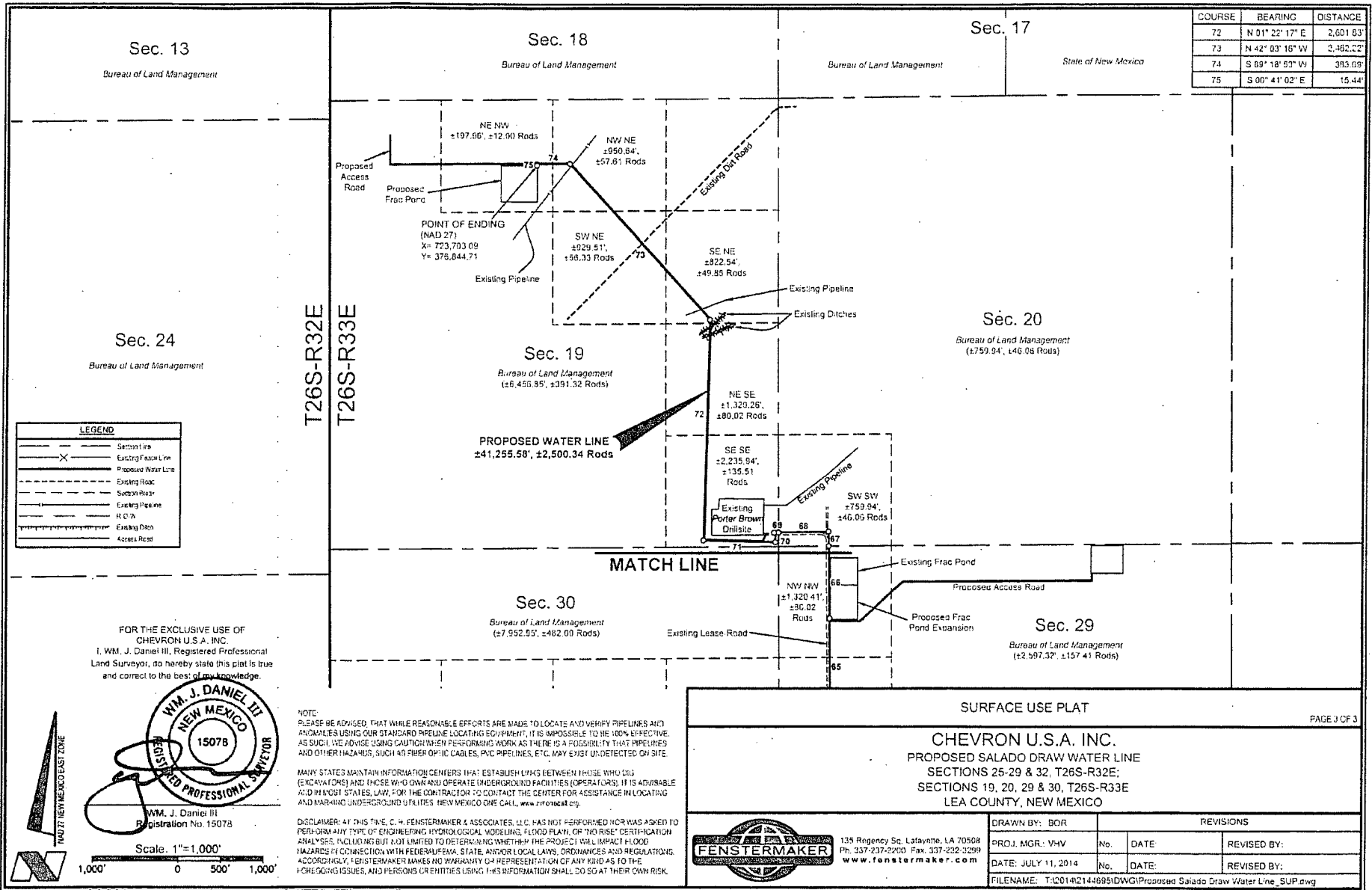
136 Regency Sq. Lafayette, LA 70506  
Ph. 337-237-2200 Fax. 337-237-3796  
[www.fenstermaker.com](http://www.fenstermaker.com)

DRAWN BY: GCG		REVISIONS	
PROJ. MGR: VHV	No. 1	DATE: June 9, 2014	REVISED BY: GCG
DATE: MAY 30, 2014	No.	DATE	REVISED BY:

FILE NAME: T:\26\27146095\DWG\Salado Draw 18 & 19 26 33 Fed 3H & 4H 21 CLIP.dwg







**NOTE:**

Please be advised, that while reasonable efforts are made to locate and verify pipelines and anomalies using our standard pipeline locating equipment, it is impossible to be 100 % effective. As such, we advise using caution when performing work as there is a possibility that pipelines and other hazards, such as fiber optic cables, PVC pipelines, etc. may exist undetected on site.

**NOTE:**

Many states maintain information centers that establish links between those who dig (excavators) and those who own and operate underground facilities (operators). It is advisable and in most states, law, for the contractor to contact the center for assistance in locating and marking underground utilities. For guidance, New Mexico One Call System - <http://www.nmonecall.org>.

**DISCLAIMER:** At this time, C.H. Fenstermaker & Associates, LLC has not performed nor was asked to perform any type of engineering, hydrological modeling, flood plain, or "No Rise" certification analyses, including but not limited to determining whether the project will impact flood hazards in connection with federal/FEMA, state, and/or local laws, ordinances and regulations. Accordingly, Fenstermaker makes no warranty or representation of any kind as to the foregoing issues, and persons or entities using this information shall do so at their own risk.

**R 33 E****Sec. 18**

Bureau of Land Management

**T  
26  
S**

NW NW

**Sec. 19**

Bureau of Land Management

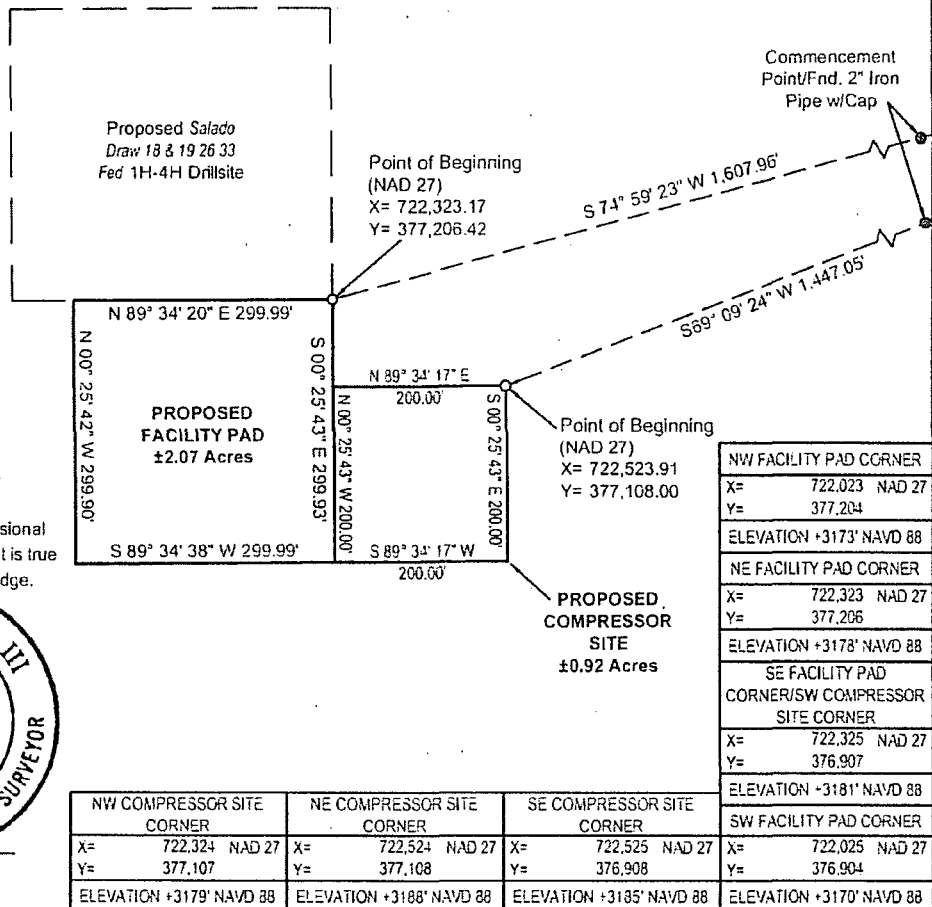
FOR THE EXCLUSIVE USE OF  
CHEVRON U.S.A. INC.

I, WM. J. Daniel III, Registered Professional  
Land Surveyor, do hereby state this plat is true  
and correct to the best of my knowledge.

NAD 27 NEW MEXICO EAST ZONE



WM. J. Daniel III  
Registration No. 15078



SURFACE USE PLAT

Scale: 1"=200'

200' 0 100' 200'

**CHEVRON U.S.A. INC.**  
**PROPOSED FACILITY PAD & COMPRESSOR SITE**  
**SALADO DRAW 18 & 19 26 33 FED 1H-4H**  
**SECTION 19, T26S-R33E**  
**LEA COUNTY, NEW MEXICO**



135 Regency Sq. Lafayette, LA 70508  
 Ph. 337-237-2200 Fax. 337-232-3299  
[www.fenstermaker.com](http://www.fenstermaker.com)

DRAWN BY: BOR		REVISIONS	
PROJ. MGR.: VHV	No.	DATE:	REVISED BY:
DATE: AUGUST 29, 2014	No.	DATE:	REVISED BY:
FILENAME: T:\2014\2144669\DWG\Salado Draw 18 & 19 26 33 1H-4H_Facility_SUP.dwg			



Well Pad/Facility Pad (typical)

varies

43'

Flowline ROW

14'

Road

EDS ROW

15'

1" = 30'

TYPICAL DETAIL SECTION 19



**Chevron**

Midcontinent Business Unit

SALADO DRAW  
DRILLING PROGRAM  
ROAD DETAIL

TYPICAL ROAD SECTION DETAIL



**METES AND BOUNDS DESCRIPTION OF  
A CALLED 2.07 ACRE FACILITY PAD  
SECTION 19, T26S-R33E  
LEA COUNTY, NEW MEXICO**

Survey of a proposed 300' x 300' facility pad on Bureau of Land Management land in Section 19 of Township 26 South Range 33 East, Lea County, New Mexico.

**COMMENCING** at a found 2" iron pipe with cap, located at the Northeast corner of the Northwest quarter of said Section 19 Township 26 South Range 33 East; **thence** South 74 degrees 59 minutes 23 seconds West 1,607.96 feet to the **POINT OF BEGINNING**, said **POINT OF BEGINNING** having the following coordinates: X= 722,323.17, Y= 377,206.42 (New Mexico State Plane coordinate system, East zone, NAD 27).

**Thence** South 00 degrees 25 minutes 43 seconds East 299.93 feet;

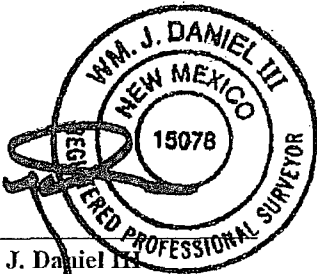
**Thence** South 89 degrees 34 minutes 38 seconds West 299.99 feet;

**Thence** North 00 degrees 25 minutes 42 seconds West 299.90 feet;

**Thence** North 89 degrees 34 minutes 20 seconds East 299.99 feet to the **POINT OF BEGINNING**.

The bearings recited hereon are oriented to New Mexico State Plane coordinate system, East zone, NAD 27.

This description represents a survey made on the ground for a surface easement and intended solely for that purpose. This description does not represent a boundary survey.



WM. J. Daniel III  
Registered Professional Land Surveyor #15078  
C.H. Eastermaker & Associates, LLC  
135 Regency Square  
Lafayette, LA 70508  
337-237-2200

**METES AND BOUNDS DESCRIPTION OF  
A CALLED 0.92 ACRE COMPRESSOR PAD  
SECTION 19, T26S-R33E  
LEA COUNTY, NEW MEXICO**

Survey of a proposed 200' x 200' compressor pad on Bureau of Land Management land in Section 19 of Township 26 South Range 33 East, Lea County, New Mexico.

**COMMENCING** at a found 2" iron pipe with cap, located at the Northeast corner of the Northwest quarter of said Section 19 Township 26 South Range 33 East; **thence** South 69 degrees 09 minutes 24 seconds West 1,447.05 feet to the **POINT OF BEGINNING**, said **POINT OF BEGINNING** having the following coordinates: X= 722,523.91, Y= 377,108.00 (New Mexico State Plane coordinate system, East zone, NAD 27).

**Thence** South 00 degrees 25 minutes 43 seconds East 200.00 feet;

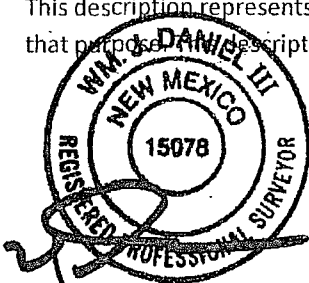
**Thence** South 89 degrees 34 minutes 17 seconds West 200.00 feet;

**Thence** North 00 degrees 25 minutes 43 seconds West 200.00 feet;

**Thence** North 89 degrees 34 minutes 17 seconds East 200.00 feet to the **POINT OF BEGINNING**.

The bearings recited hereon are oriented to New Mexico State Plane coordinate system, East zone, NAD 27.

This description represents a survey made on the ground for a surface easement and intended solely for that purpose. This description does not represent a boundary survey.



Wm. J. Daniel III  
Registered Professional Land Surveyor #15078  
C.H. Fenstermaker & Associates, LLC  
135 Regency Square  
Lafayette, LA 70508  
337-237-2200

**NOTE:**

Please be advised, that while reasonable efforts are made to locate and verify pipelines and anomalies using our standard pipeline locating equipment, it is impossible to be 100 % effective. As such, we advise using caution when performing work as there is a possibility that pipelines and other hazards, such as fiber optic cables, PVC pipelines, etc. may exist undetected on site.

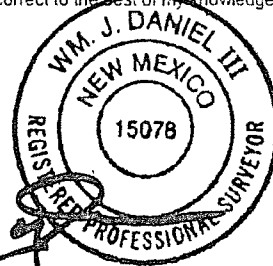
**NOTE:**

Many states maintain information centers that establish links between those who dig (excavators) and those who own and operate underground facilities (operators). It is advisable and in most states, law, for the contractor to contact the center for assistance in locating and marking underground utilities. For guidance: New Mexico One Call - [www.nmonecall.org](http://www.nmonecall.org)

**DISCLAIMER:** At this time, C.H. Fenstermaker & Associates, LLC has not performed nor was asked to perform any type of engineering, hydrological modelling, flood plain, or "No Rise" certification analyses, including but not limited to determining whether the project will impact flood hazards in connection with federal/FEMA, state, and/or local laws, ordinances and regulations. Accordingly, Fenstermaker makes no warranty or representation of any kind as to the foregoing issues, and persons or entities using this information shall do so at their own risk.

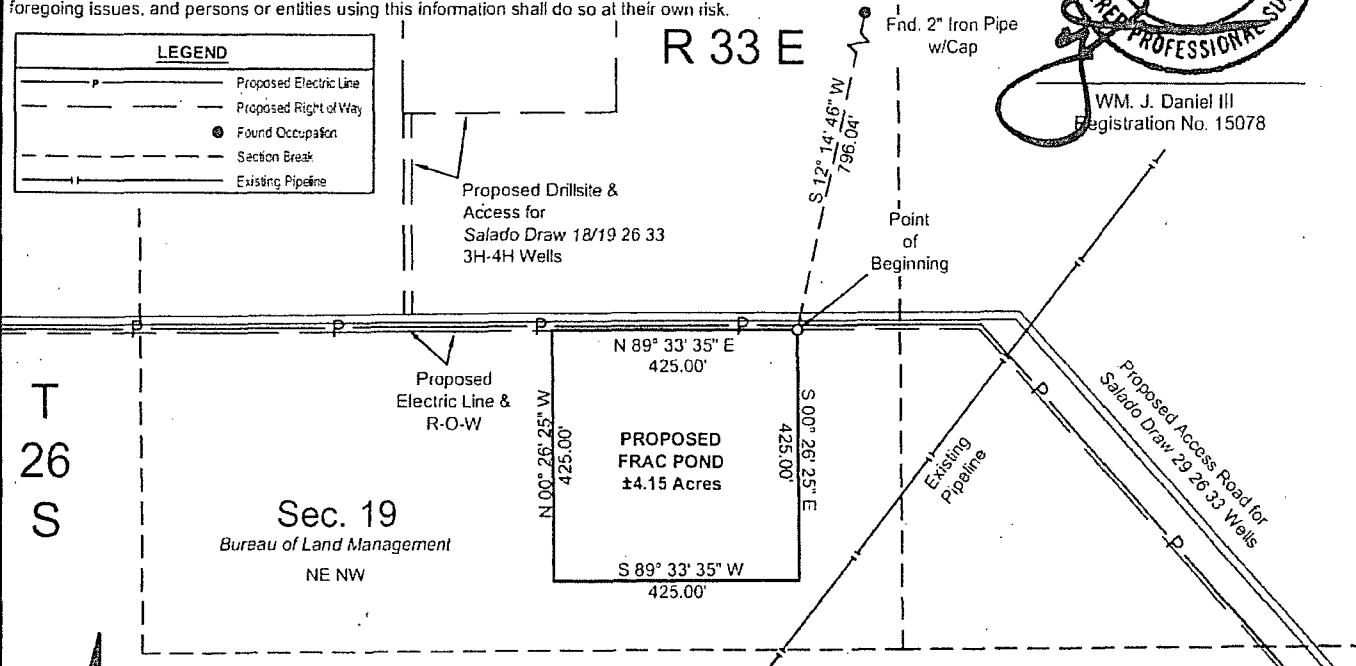
FOR THE EXCLUSIVE USE OF  
CHEVRON U.S.A. INC.

I, WM. J. Daniel III, Registered Professional  
Land Surveyor, do hereby state this plat is true  
and correct to the best of my knowledge.



WM. J. Daniel III  
Registration No. 15078

LEGEND	
	Proposed Electric Line
	Proposed Right of Way
	Found Occupation
	Section Break
	Existing Pipeline



**METES AND BOUNDS DESCRIPTION OF  
A CALLED 4.15 ACRE PROPOSED FRAC POND  
SECTION 19, T26S-R33E  
LEA COUNTY, NEW MEXICO**

SURVEY OF A PROPOSED 425' X 425' FRAC POND ON BUREAU OF LAND MANAGEMENT LAND IN SECTION 19 OF TOWNSHIP 26 SOUTH RANGE 33 EAST, LEA COUNTY, NEW MEXICO.

COMMENCING AT A FOUND 2" IRON PIPE WITH CAP, LOCATED AT THE NORTHEAST CORNER OF THE NORTHWEST QUARTER OF SAID SECTION 19 TOWNSHIP 26 SOUTH RANGE 33 EAST; THENCE SOUTH 12 DEGREES 14 MINUTES 46 SECONDS WEST 756.04 FEET TO THE POINT OF BEGINNING, SAID POINT OF BEGINNING HAVING THE FOLLOWING COORDINATES: X= 723,707.41, Y= 376,845 (NEW MEXICO STATE PLANE COORDINATE SYSTEM, EAST ZONE, NAD 27).

THENCE SOUTH 60 DEGREES 26 MINUTES 25 SECONDS EAST 425.00 FEET;

THENCE SOUTH 89 DEGREES 33 MINUTES 35 SECONDS WEST 425.00 FEET;

THENCE NORTH 60 DEGREES 26 MINUTES 25 SECONDS WEST 425.00 FEET;

THENCE NORTH 89 DEGREES 33 MINUTES 35 SECONDS EAST 425.00 FEET TO THE POINT OF BEGINNING.

THE BEARINGS RECITED HEREON ARE ORIENTED TO NEW MEXICO STATE PLANE COORDINATE SYSTEM, EAST ZONE, NAD 27.

THIS DESCRIPTION REPRESENTS A SURVEY MADE ON THE GROUND FOR A SURFACE EASEMENT AND INTENDED SOLELY FOR THAT PURPOSE. THIS DESCRIPTION DOES NOT REPRESENT A BOUNDARY SURVEY.

NW FRAC POND CORNER	NE FRAC POND CORNER
X= 723,282 NAD 27	X= 723,707 NAD 27
Y= 376,842	Y= 376,845
ELEVATION +3189' NAVD 88	ELEVATION +3194' NAVD 88
SE FRAC POND CORNER	SW FRAC POND CORNER
X= 723,711 NAD 27	X= 723,286 NAD 27
Y= 376,420	Y= 376,417
ELEVATION +3192' NAVD 88	ELEVATION +3186' NAVD 88

**SURFACE USE PLAT**

Scale: 1"=300'

300' 0 150' 300'

**CHEVRON U.S.A. INC.**

PROPOSED FRAC POND

SALADO DRAW 18 & 19 26 33 FED NO. 1H-4H WELLS

SECTION 19, T26S-R33E

LEA COUNTY, NEW MEXICO



135 Regency Sq. Lafayette, LA 70508  
Ph. 337-237-2200 Fax. 337-232-3299  
[www.fenstermaker.com](http://www.fenstermaker.com)

DRAWN BY: BMO		REVISIONS	
PROJ. MGR.: VHV	No. 1	DATE: 05/27/2014	REVISED BY: VHV
DATE: MAY 08, 2014	No.	DATE:	REVISED BY:
FILENAME: T:\2014\2144669\DWG\Salado Draw 18 & 19 26 33 1H-4H_Frac Pond_SUP.dwg			