

HOBBS OCD

DEC 03 2014

Form C-102

District I

1625 N. French Dr., Hobbs, NM 88240
Phone: (575) 393-6161 Fax: (575) 393-0720

District II

811 S. First St., Artesia, NM 88210
Phone: (575) 748-1283 Fax: (575) 748-9720

District III

1000 Rio Brazos Road, Aztec, NM 87410
Phone: (505) 334-6178 Fax: (505) 334-6170

District IV

1220 S. St. Francis Dr., Santa Fe, NM 87505
Phone: (505) 476-3460 Fax: (505) 476-3462

State of New Mexico
Energy, Minerals & Natural Resources Department
OIL CONSERVATION DIVISION
1220 South St. Francis Dr.
Santa Fe, NM 87505

Revised August 1, 2011

Submit one copy to appropriate

District Office

RECEIVED

☐ AMENDED REPORT

WELL LOCATION AND ACREAGE DEDICATION PLAT

¹ API Number 30025 43212	² Pool Code 49490	³ Pool Name Paduca; Delaware, NORTH
⁴ Property Code 38384	⁵ Property Name TRIONYX 6 FEDERAL	
⁷ OGRID No. 6137	⁸ Operator Name DEVON ENERGY PRODUCTION COMPANY, L.P.	
		⁶ Well Number 11H
		⁹ Elevation 3438.8

¹⁰ Surface Location

UL or lot no.	Section	Township	Range	Lot Idn	Feet from the	North/South line	Feet from the	East/West line	County
7	6	25 S	32 E		215	SOUTH	505	WEST	LEA

¹¹ Bottom Hole Location If Different From Surface

UL or lot no.	Section	Township	Range	Lot Idn	Feet from the	North/South line	Feet from the	East/West line	County
4	6	25 S	32 E		330	NORTH	660	WEST	LEA

¹² Dedicated Acres 159.763	¹³ Joint or Infill	¹⁴ Consolidation Code	¹⁵ Order No.
---	-------------------------------	----------------------------------	-------------------------

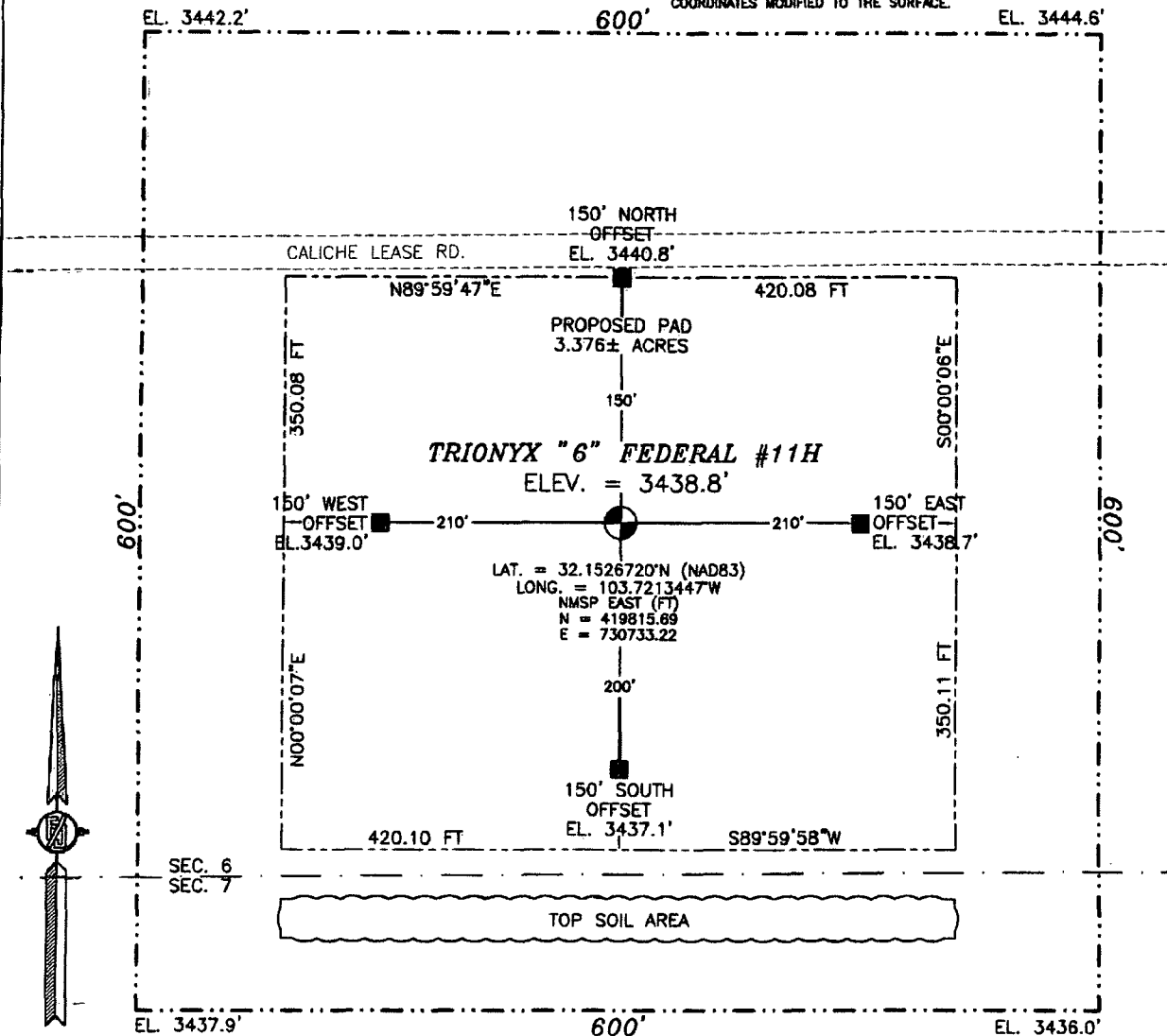
No allowable will be assigned to this completion until all interests have been consolidated or a non-standard unit has been approved by the division.

<p>N89°37'30"E 2637.93 FT</p> <p>LOT 3</p> <p>N/4 CORNER SEC. 6 LAT. = 32.1665874°N LONG. = 103.7144339°W</p> <p>NMSP EAST (FT) N = 424890.17 E = 732842.87</p> <p>NE CORNER SEC. 6 LAT. = 32.1666268°N LONG. = 103.7058427°W</p> <p>NMSP EAST (FT) N = 424919.89 E = 735501.22</p>		<p>N89°21'34"E 2659.09 FT</p> <p>LOT 2</p> <p>LOT 1</p>		<p>¹⁷ OPERATOR CERTIFICATION</p> <p>I hereby certify that the information contained herein is true and complete to the best of my knowledge and belief, and that this organization either owns a working interest or unleased mineral interest in the land including the proposed bottom hole location or has a right to drill this well at this location pursuant to a contract with an owner of such a mineral or working interest, or to a voluntary pooling agreement or a compulsory pooling order heretofore entered by the division.</p> <p><i>Trina C. Couch</i> 9/14/14 Signature Date</p> <p>Trina C. Couch, Regulatory Analyst</p> <p>Printed Name</p> <p>trina.couch@dmn.com</p> <p>E-mail Address</p>	
<p>660'</p> <p>LOT 4</p> <p>39.79± AC.</p> <p>NW CORNER SEC. 6 LAT. = 32.1665814°N LONG. = 103.7229589°W</p> <p>NMSP EAST (FT) N = 424872.91 E = 730205.58</p> <p>LOT 5</p> <p>W/4 CORNER SEC. 6 LAT. = 32.1593345°N LONG. = 103.7229671°W</p> <p>NMSP EAST (FT) N = 422236.56 E = 730217.37</p> <p>LOT 6</p> <p>SW CORNER SEC. 6 LAT. = 32.1520816°N LONG. = 103.7229769°W</p> <p>NMSP EAST (FT) N = 419598.07 E = 730229.30</p> <p>LOT 7</p> <p>40.36± AC.</p> <p>215'</p> <p>SURFACE LOCATION</p> <p>505'</p>		<p>500' 32' 45" E 2645.38 FT</p> <p>500' 32' 45" E 2645.38 FT</p> <p>500' 32' 45" E 2645.38 FT</p> <p>500' 32' 45" E 2645.38 FT</p>		<p>¹⁸ SURVEYOR CERTIFICATION</p> <p>I hereby certify that the well location shown on this plat was plotted from field notes of actual surveys made by me or under my supervision, and that the same is true and correct to the best of my belief.</p> <p>JULY 2014</p> <p>NEW MEXICO</p> <p>12797</p> <p>Signature and Seal of Professional Surveyor</p> <p>Certificate Number: JARAMILLO, PLS 12797</p> <p>SURVEY NO. 2019</p>	
<p>589°42'07"W 2662.90 FT</p> <p>589°35'57"W 2660.68 FT</p>					

DEC 04 2014

SECTION 6, TOWNSHIP 25 SOUTH, RANGE 32 EAST, N.M.P.M.
LEA COUNTY, STATE OF NEW MEXICO
SITE MAP

NOTE: LATITUDE AND LONGITUDE COORDINATES ARE SHOWN USING THE NORTH AMERICAN DATUM OF 1983 (NAD83). LISTED NEW MEXICO STATE PLANE EAST COORDINATES ARE GRID (NAD83). BASIS OF BEARING AND DISTANCES USED ARE NEW MEXICO STATE PLANE EAST COORDINATES MODIFIED TO THE SURFACE.



0 10 50 100 200

SCALE 1" = 100'

DIRECTIONS TO LOCATION

FROM THE INTERSECTION OF ORLA HWY #1 & MONSANTO ROAD GO WEST ON MONSANTO ROAD APPROX. 2.1 MILES ROAD TURNS RIGHT (NORTH) GO NORTH APPROX. 0.9 MILES ROAD TURNS LEFT (WEST) GO WEST APPROX. 2.0 MILES ROAD TURNS RIGHT (NORTH) GO NORTH APPROX. 1.3 MILES TO LEASE ROAD ON RIGHT (EAST) GO EAST APPROX. 1.05 MILES LOCATION IS ON RIGHT (SOUTH) OF LEASE ROAD 150 FEET.

DEVON ENERGY PRODUCTION COMPANY, L.P.

TRIONYX "6" FEDERAL #11H

LOCATED 215 FT. FROM THE SOUTH LINE

AND 505 FT. FROM THE WEST LINE OF

SECTION 6, TOWNSHIP 25 SOUTH,

RANGE 32 EAST, N.M.P.M.

LEA COUNTY, STATE OF NEW MEXICO

JULY 9, 2013

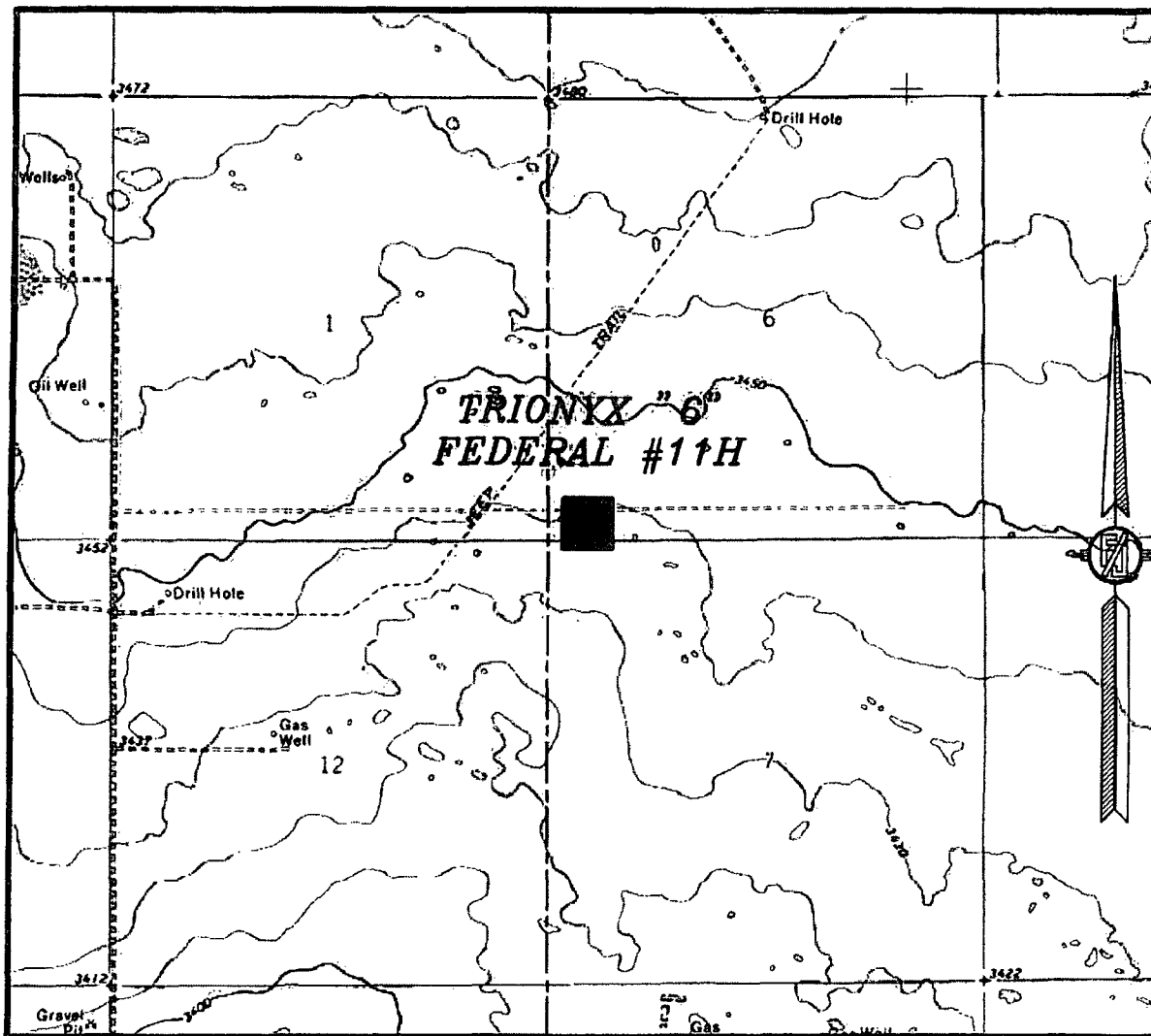
SURVEY NO. 2019

MADRON SURVEYING, INC.

301 SOUTH CANAL
(575) 234-3341

CARLSBAD, NEW MEXICO

SECTION 6, TOWNSHIP 25 SOUTH, RANGE 32 EAST, N.M.P.M.
LEA COUNTY, STATE OF NEW MEXICO
LOCATION VERIFICATION MAP



USGS QUAD MAP:
PADUCA BREAKS NW

NOT TO SCALE

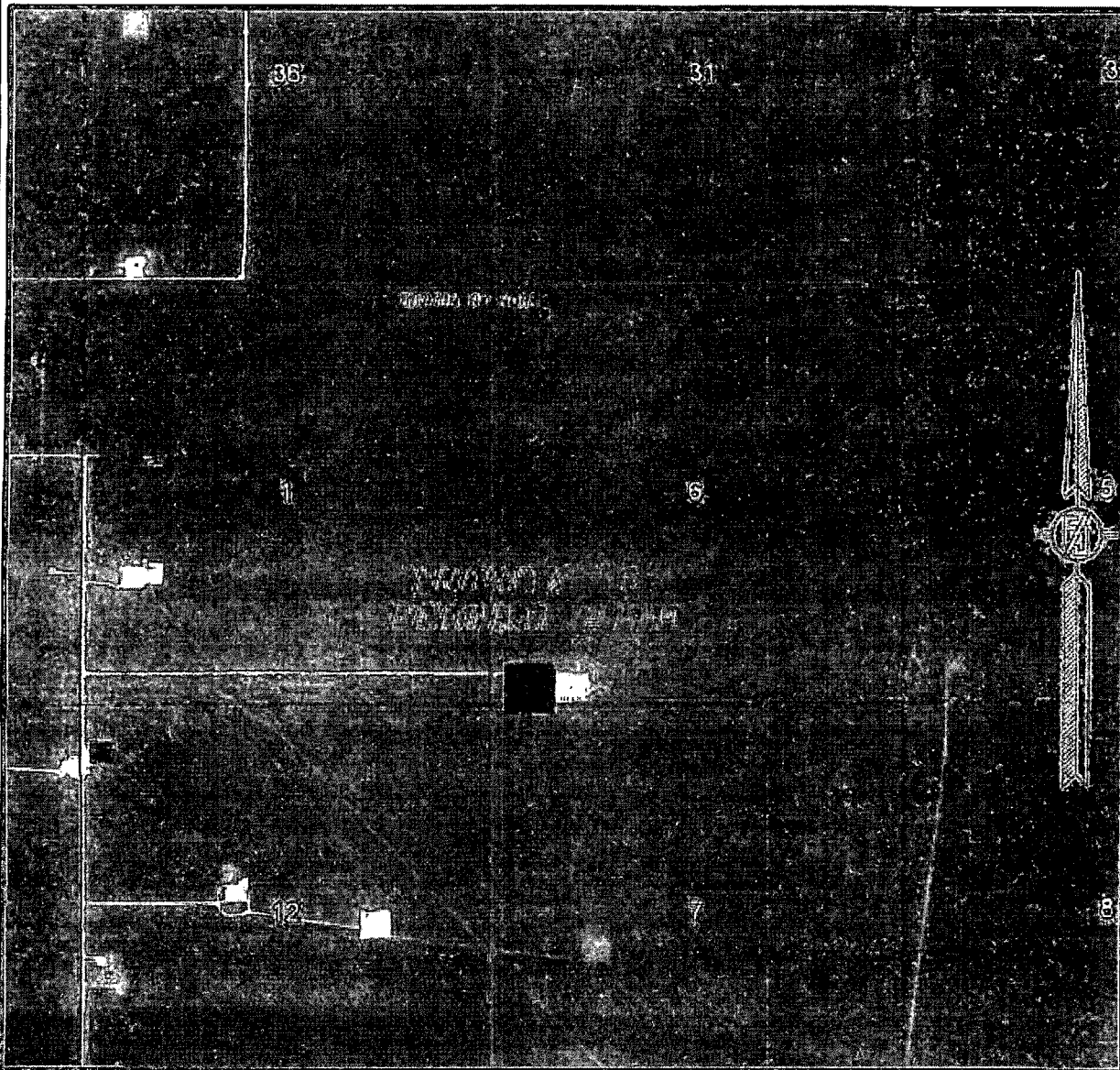
DEVON ENERGY PRODUCTION COMPANY, L.P.
TRIONYX "6" FEDERAL #11H
LOCATED 215 FT. FROM THE SOUTH LINE
AND 505 FT. FROM THE WEST LINE OF
SECTION 6, TOWNSHIP 25 SOUTH,
RANGE 32 EAST, N.M.P.M.
LEA COUNTY, STATE OF NEW MEXICO

JULY 9, 2013

MADRON SURVEYING, INC. 301 SOUTH CANAL (575) 234-3341 CARLSBAD, NEW MEXICO SURVEY NO. 2019

CARLSBAD, NEW MEXICO

SECTION 6, TOWNSHIP 25 SOUTH, RANGE 32 EAST, N.M.P.M.
LEA COUNTY, STATE OF NEW MEXICO
AERIAL PHOTO



NOT TO SCALE
AERIAL PHOTO:
GOOGLE EARTH
MARCH 2012

DEVON ENERGY PRODUCTION COMPANY, L.P.

TRIONYX "6" FEDERAL #11H

LOCATED 215 FT. FROM THE SOUTH LINE
AND 505 FT. FROM THE WEST LINE OF
SECTION 6, TOWNSHIP 25 SOUTH,
RANGE 32 EAST, N.M.P.M.
LEA COUNTY, STATE OF NEW MEXICO

JULY 9, 2013

SURVEY NO. 2019

MADRON SURVEYING, INC. 301 SOUTH CANAL (575) 234-3341 CARLSBAD, NEW MEXICO

