

District I  
1625 N. French Dr., Hobbs, NM 88240  
Phone: (575) 393-6161 Fax: (575) 393-0720

District II  
811 S. First St., Artesia, NM 88210  
Phone: (575) 748-1283 Fax: (575) 748-9720

District III  
1000 Rio Brazos Road, Aztec, NM 87410  
Phone: (505) 334-6178 Fax: (505) 334-6170

District IV  
1220 S. St. Francis Dr., Santa Fe, NM 87505  
Phone: (505) 476-3460 Fax: (505) 476-3462

State of New Mexico  
Energy, Minerals & Natural Resources Department  
OIL CONSERVATION DIVISION  
1220 South St. Francis Dr.  
Santa Fe, NM 87505

HOBBS OCD  
NOV 26 2014  
RECEIVED

Form C-102  
Revised August 1, 2011  
Submit one copy to appropriate  
District Office

☐ AMENDED REPORT

WELL LOCATION AND ACREAGE DEDICATION PLAT

<sup>1</sup> API Number 30-025-42289	<sup>2</sup> Pool Code 96434	<sup>3</sup> Pool Name Red Hills Bone Spring, North
<sup>4</sup> Property Code 40461	<sup>5</sup> Property Name GRAMMA RIDGE 14 24 34	<sup>6</sup> Well Number 6H
<sup>7</sup> OGRID No. 4323	<sup>8</sup> Operator Name CHEVRON U.S.A. INC.	<sup>9</sup> Elevation 3476'

<sup>10</sup> Surface Location

UL or lot no.	Section	Township	Range	Lot Idn	Feet from the	North/South line	Feet from the	East/West line	County
B	14	24 SOUTH	34 EAST, N.M.P.M.		330'	NORTH	1700'	EAST	LEA

<sup>11</sup> Bottom Hole Location If Different From Surface

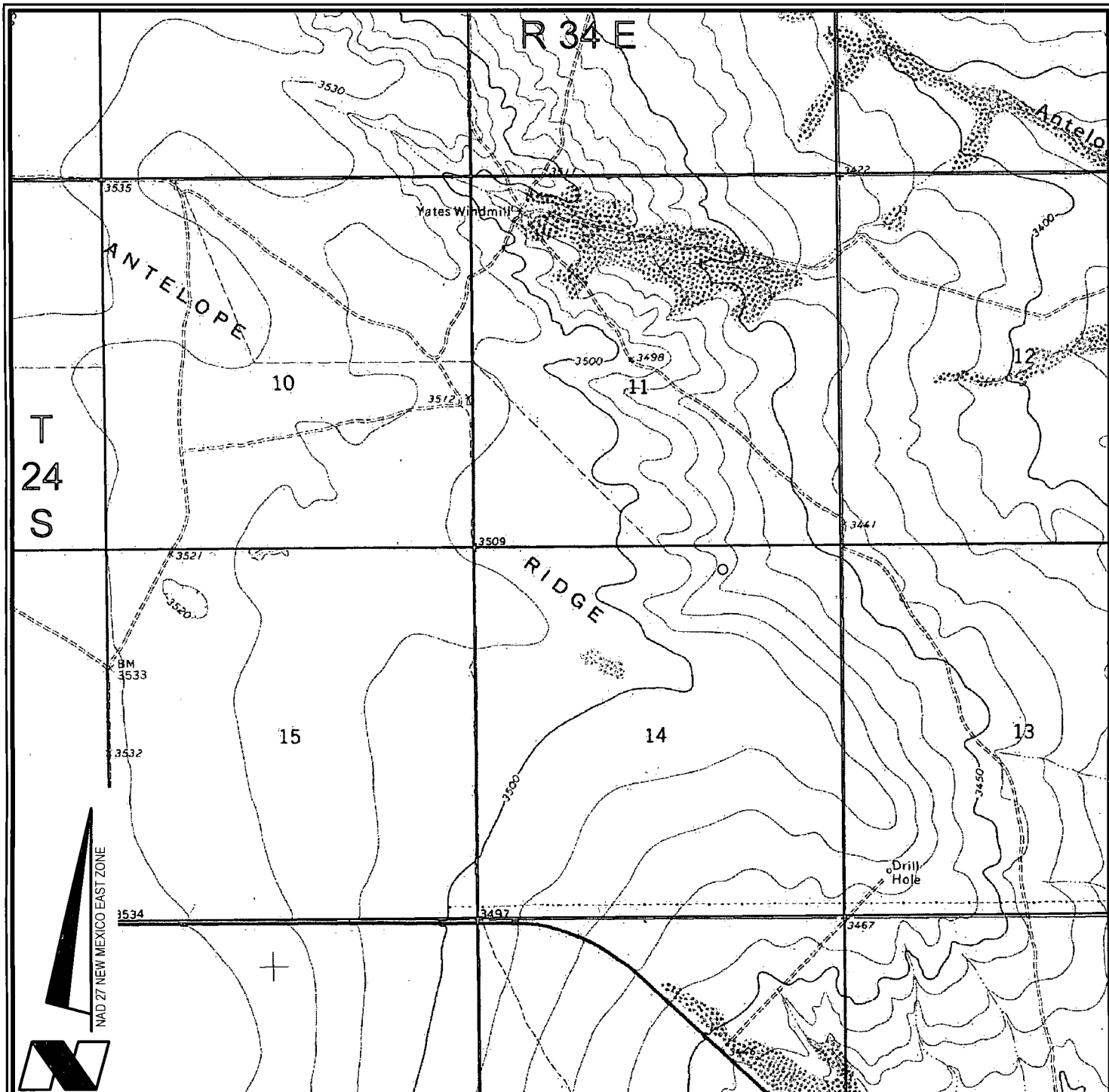
UL or lot no.	Section	Township	Range	Lot Idn	Feet from the	North/South line	Feet from the	East/West line	County
O	14	24 SOUTH	34 EAST, N.M.P.M.		280'	SOUTH	1980'	EAST	LEA

<sup>12</sup> Dedicated Acres 160	<sup>13</sup> Joint or Infill	<sup>14</sup> Consolidation Code	<sup>15</sup> Order No.
--------------------------------------	-------------------------------	----------------------------------	-------------------------

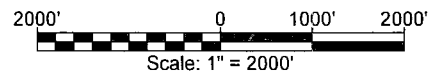
No allowable will be assigned to this completion until all interests have been consolidated or a non-standard unit has been approved by the division.

<p>GRAMMA RIDGE 14 24 34 6H WELL</p> <p>X= 777,117 NAD 27 Y= 446,271 LAT. 32.223741 LONG. 103.437226</p> <p>X= 818,301 NAD83 Y= 446,330 LAT. 32.223866 LONG. 103.437700</p> <p>ELEVATION +3476' NAVD 88</p>	<p>Proposed First Take Point 330' FNL, 1700' FEL</p> <p>Proposed Last Take Point 330' FSL, 1977' FEL</p> <p>Proposed Bottom Hole Location</p>	<p><sup>17</sup> OPERATOR CERTIFICATION</p> <p>I hereby certify that the information contained herein is true and complete to the best of my knowledge and belief, and that this organization either owns a working interest or unleased mineral interest in the land including the proposed bottom hole location or has a right to drill this well at this location pursuant to a contract with an owner of such a mineral or working interest, or in a voluntary pooling agreement or a compulsory pooling order heretofore entered by the division.</p> <p>Signature: Denise Pinkerton Printed Name: Denise Pinkerton E-mail Address: leakejd@chevron.com</p> <p><sup>18</sup> SURVEYOR CERTIFICATION</p> <p>I hereby certify that the well location shown on this plat was plotted from field notes of actual surveys made by me or under my supervision, and that the same is true and correct to the best of my belief.</p> <p>Date of Survey: 6-10-14 Signature and Seal of Professional Surveyor: Wm. J. Daniel III Certificate Number: 15078</p>
---	---	---

DEC 09 2014



VICINITY MAP



**CHEVRON U.S.A. INC.**  
GRAMMA RIDGE 14 24 34 NO. 6H WELL  
LOCATED 330' FNL AND 1700' FEL  
SECTION 14, T24S-R34E  
LEA COUNTY, NEW MEXICO



Lafayette New Orleans Houston  
135 Regency Sq. Lafayette, LA 70508  
Ph. 337-237-2200 Fax. 337-232-3299  
[www.fenstermaker.com](http://www.fenstermaker.com)

DRAWN BY: BMO

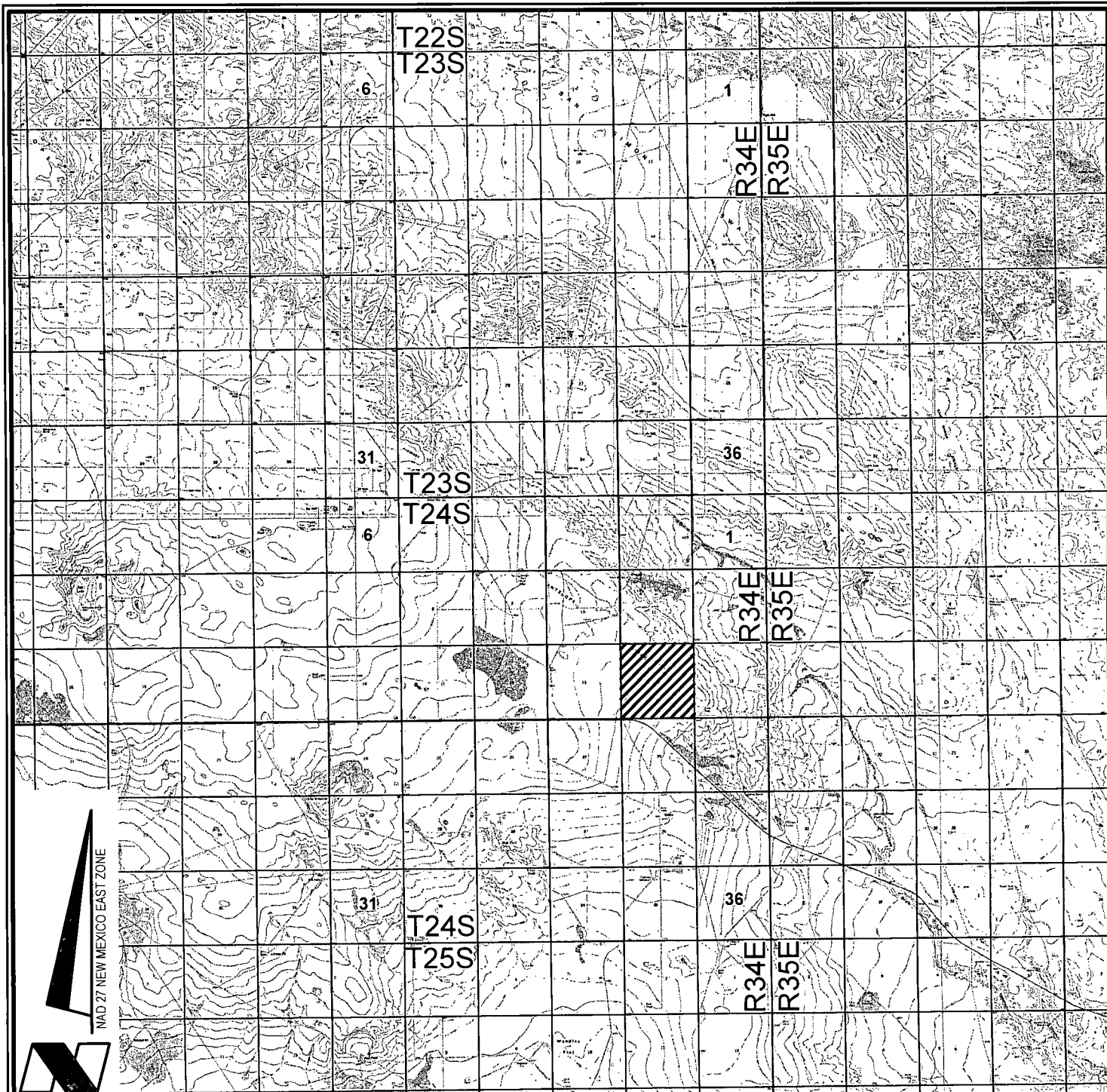
REVISED:

DATE: JUNE 3, 2014

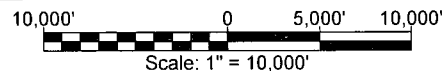
PROJ. MGR.: VHV

SHEET 1 OF 3 SHEETS

FILENAME: T:\2014\2144956\DWG\Gammaamma Ridge 14 24 34 6H\_APD.dwg



VICINITY MAP



**CHEVRON U.S.A. INC.**  
 GRAMMA RIDGE 14 24 34 NO. 6H WELL  
 LOCATED 330' FNL AND 1700' FEL  
 SECTION 14, T24S-R34E  
 LEA COUNTY, NEW MEXICO



Lafayette New Orleans Houston  
 135 Regency Sq. Lafayette, LA 70508  
 Ph. 337-237-2200 Fax. 337-232-3299  
[www.fenstermaker.com](http://www.fenstermaker.com)

DRAWN BY: BMO

PROJ. MGR.: VHV

REVISED:

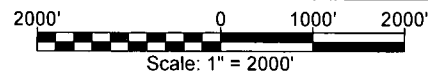
DATE: JUNE 3, 2014

SHEET 2 OF 3 SHEETS

FILENAME: T:\2014\2144956\DWG\Gammaamma Ridge 14 24 34 6H\_APD.dwg



VICINITY MAP



- = FEDERAL LAND
- = FEE LAND
- = STATE LAND

**CHEVRON U.S.A. INC.**  
 GRAMMA RIDGE 14 24 34 NO. 6H WELL  
 LOCATED 330' FNL AND 1700' FEL  
 SECTION 14, T24S-R34E  
 LEA COUNTY, NEW MEXICO



Lafayette New Orleans Houston  
 135 Regency Sq. Lafayette, LA 70508  
 Ph. 337-237-2200 Fax. 337-232-3299  
[www.fenstermaker.com](http://www.fenstermaker.com)

DRAWN BY: BMO

PROJ. MGR.: VHV

REVISED:

DATE: JUNE 3, 2014

SHEET 3 OF 3 SHEETS

FILENAME: T:\2014\2144956\DWG\Gramma Ridge 14 24 34 6H\_APD.dwg

