

District I  
1625 N. French Dr., Hobbs, NM 88240  
Phone: (575) 393-6161 Fax: (575) 393-0720  
District II  
811 S. First St., Artesia, NM 88210  
Phone: (575) 748-1283 Fax: (575) 748-9720  
District III  
1000 Rio Brazos Road, Aztec, NM 87410  
Phone: (505) 334-6178 Fax: (505) 334-6170  
District IV  
1220 S. St. Francis Dr., Santa Fe, NM 87505  
Phone: (505) 476-3460 Fax: (505) 476-3462

State of New Mexico  
Energy, Minerals & Natural Resources Department  
OIL CONSERVATION DIVISION  
1220 South St. Francis Dr.  
Santa Fe, NM 87505

Form C-102  
Revised August 1, 2011  
Submit one copy to appropriate  
District Office

☒ AMENDED REPORT

WELL LOCATION AND ACREAGE DEDICATION PLAT

<sup>1</sup> API Number 30-025-41565		<sup>2</sup> Pool Code 97922		<sup>3</sup> Pool Name WC-025 G-06 S223421L; BONE SPRING	
<sup>4</sup> Property Code 30863		<sup>5</sup> Property Name GAUCHO UNIT			<sup>6</sup> Well Number 13H
<sup>7</sup> OGRID No. 6137		<sup>8</sup> Operator Name DEVON ENERGY PRODUCTION COMPANY, L.P.			<sup>9</sup> Elevation 3464.7

<sup>10</sup> Surface Location									
UL or lot no.	Section	Township	Range	Lot Idn	Feet from the	North/South line	Feet from the	East/West line	County
A	20	22 S	34 E		225	NORTH	575	EAST	LEA

<sup>11</sup> Bottom Hole Location If Different From Surface									
UL or lot no.	Section	Township	Range	Lot Idn	Feet from the	North/South line	Feet from the	East/West line	County
A	17	22 S	34 E		330	NORTH	660	EAST	LEA

<sup>12</sup> Dedicated Acres 160	<sup>13</sup> Joint or Infill	<sup>14</sup> Consolidation Code	<sup>15</sup> Order No.
--------------------------------------	-------------------------------	----------------------------------	-------------------------

No allowable will be assigned to this completion until all interests have been consolidated or a non-standard unit has been approved by the division.

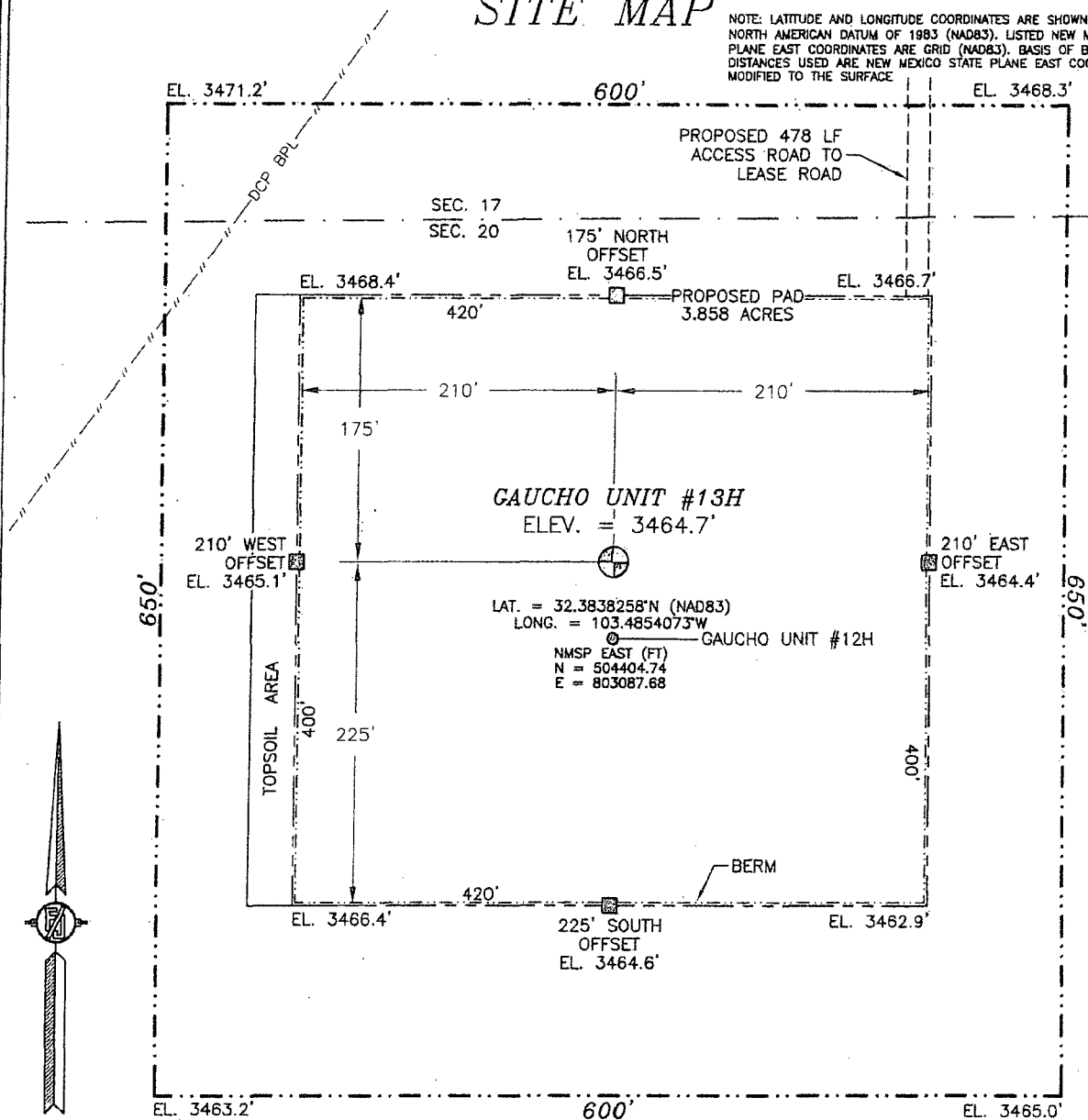
<p><sup>17</sup> OPERATOR CERTIFICATION</p> <p>I hereby certify that the information contained herein is true and complete to the best of my knowledge and belief, and that this organization either owns a working interest or unleased mineral interest in the land including the proposed bottom hole location or has a right to drill this well at this location pursuant to a contract with an owner of such a mineral or working interest, or to a voluntary pooling agreement or a compulsory pooling order heretofore entered by the division.</p> <p><i>[Signature]</i> 6/5/2014 Signature Date David H. Cook Regulatory Specialist Printed Name david.cook@dvn.com E-mail Address</p>	
<p><sup>18</sup> SURVEYOR CERTIFICATION</p> <p>I hereby certify that the well location shown on this plat was plotted from field notes of actual surveys made by me or under my supervision, and that the same is true and correct to the best of my belief.</p> <p>DECEMBER 10, 2013 Date of Survey 12797 Signature and Seal of Professional Surveyor Certificate Number: FID-10N-P. JARAMILLO. PLS 12797 SURVEY NO. 2025A</p>	

DEC 11 2014

SECTION 20, TOWNSHIP 22 SOUTH, RANGE 34 EAST, N.M.P.M.  
LEA COUNTY, STATE OF NEW MEXICO

SITE MAP

NOTE: LATITUDE AND LONGITUDE COORDINATES ARE SHOWN USING THE NORTH AMERICAN DATUM OF 1983 (NAD83). LISTED NEW MEXICO STATE PLANE EAST COORDINATES ARE GRID (NAD83). BASIS OF BEARING AND DISTANCES USED ARE NEW MEXICO STATE PLANE EAST COORDINATES MODIFIED TO THE SURFACE



0 10 50 100 200

SCALE 1" = 100'

DIRECTIONS TO LOCATION

FROM THE INTERSECTION OF STATE HIGHWAY 128 AND DELAWARE BASIN ROAD GO NORTH AND EAST ON DELAWARE BASIN ROAD APPROX. 9.5 MILES TO A LEASE ROAD ON LEFT (NORTH) TURN NORTH GO APPROX. 4.0 MILES, ROAD TURNS LEFT (WEST) GO WEST APPROX. 0.45 MILES TO A 4-WAY INTERSECTION, TURN RIGHT (NORTHEAST) GO APPROX. 0.67 MILES ON EPNG PIPELINE ROAD TO LEASE ROAD ON RIGHT (EAST) TURN EAST ON LEASE ROAD GO APPROX. 0.45 MILES TO "T" INTERSECTION, TURN RIGHT (SOUTH), LOCATION IS ON LEFT (EAST) 350'.

DEVON ENERGY PRODUCTION COMPANY, L.P.

CAUCHITO UNIT #13H

LOCATED 225 FT. FROM THE NORTH LINE  
AND 575 FT. FROM THE EAST LINE OF  
SECTION 20, TOWNSHIP 22 SOUTH,  
RANGE 34 EAST, N.M.P.M.  
LEA COUNTY, STATE OF NEW MEXICO

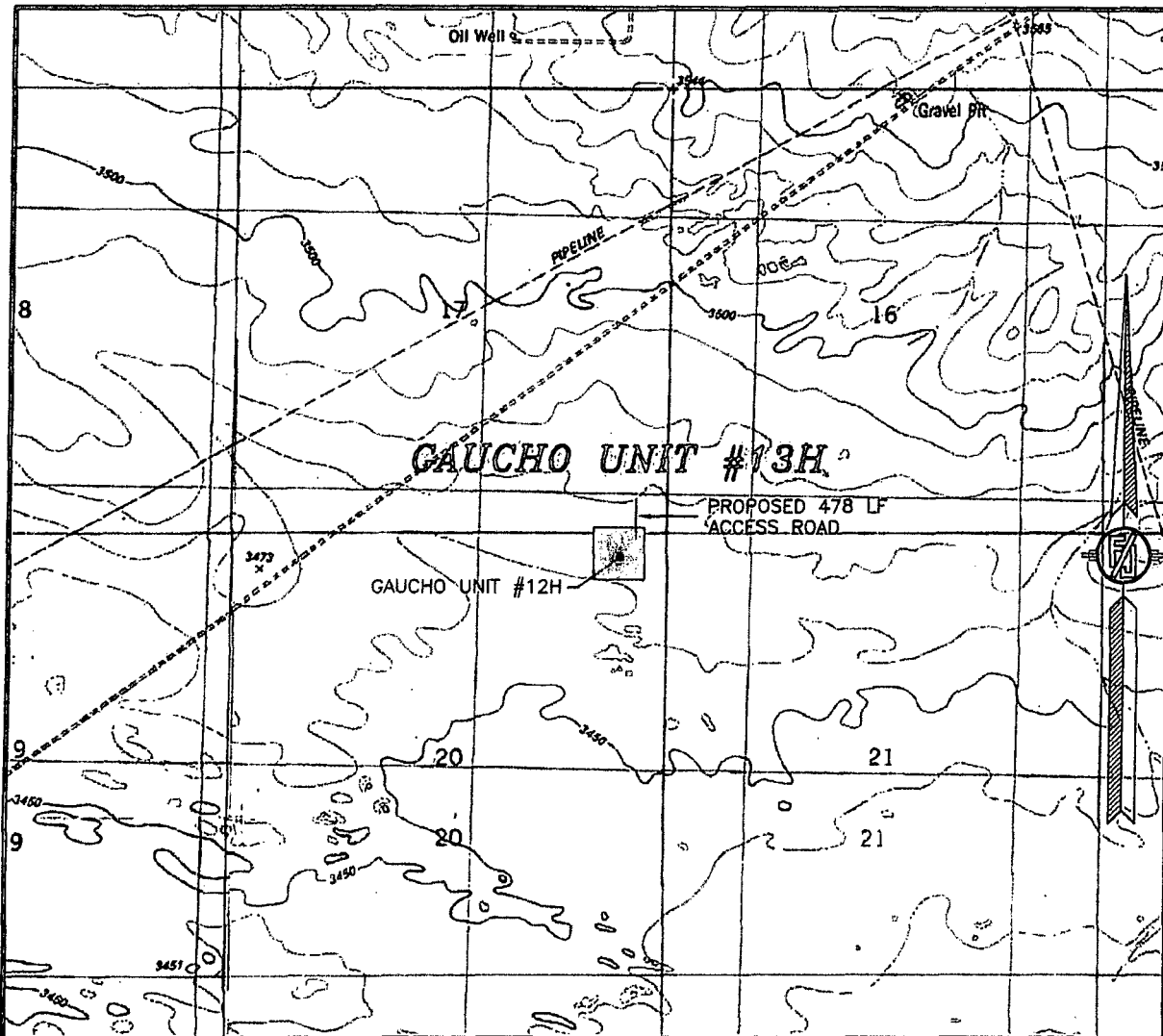
DECEMBER 10, 2013

SURVEY NO. 2025A

MADRON SURVEYING, INC. 301 SOUTH CANAL (575) 234-3341

CARLSBAD, NEW MEXICO

SECTION 20, TOWNSHIP 22 SOUTH, RANGE 34 EAST, N.M.P.M.  
LEA COUNTY, STATE OF NEW MEXICO  
LOCATION VERIFICATION MAP



USGS QUAD MAP:  
SAN SIMON RANCH

NOT TO SCALE

DEVON ENERGY PRODUCTION COMPANY, L.P.

**GAUCHO UNIT #13H**

LOCATED 225 FT. FROM THE NORTH LINE  
AND 575 FT. FROM THE EAST LINE OF  
SECTION 20, TOWNSHIP 22 SOUTH,  
RANGE 34 EAST, N.M.P.M.  
LEA COUNTY, STATE OF NEW MEXICO

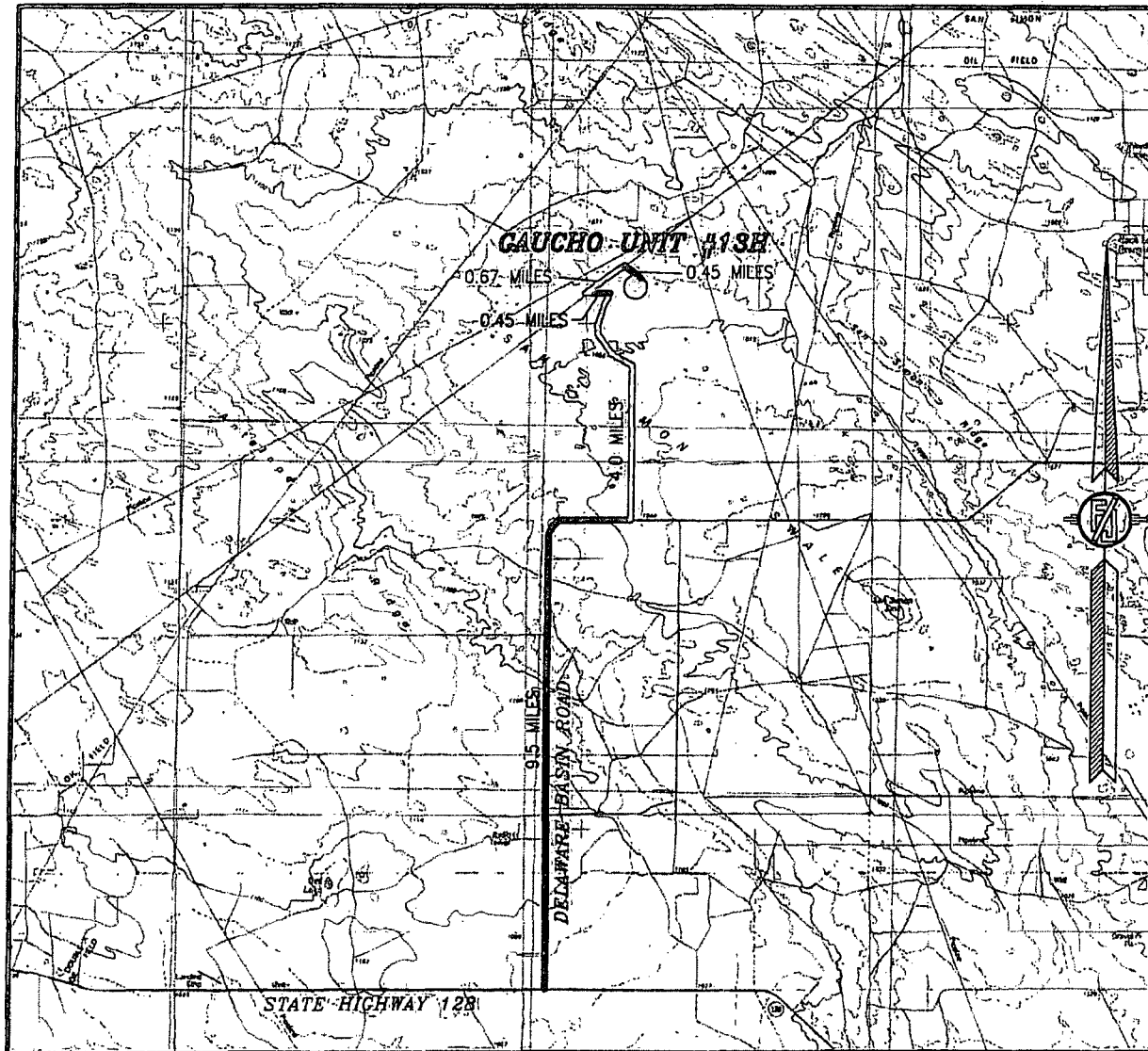
DECEMBER 10, 2013

SURVEY NO. 2025A

MADRON SURVEYING, INC. 301 SOUTH CANAL  
(575) 234-3341

CARLSBAD, NEW MEXICO

SECTION 20, TOWNSHIP 22 SOUTH, RANGE 34 EAST, N.M.P.M.  
LEA COUNTY, STATE OF NEW MEXICO  
VICINITY MAP



NOT TO SCALE

DEVON ENERGY PRODUCTION COMPANY, L.P.

**GAUCHO UNIT #13H**

LOCATED 225 FT. FROM THE NORTH LINE  
AND 575 FT. FROM THE EAST LINE OF  
SECTION 20, TOWNSHIP 22 SOUTH,  
RANGE 34 EAST, N.M.P.M.  
LEA COUNTY, STATE OF NEW MEXICO

DECEMBER 10, 2013

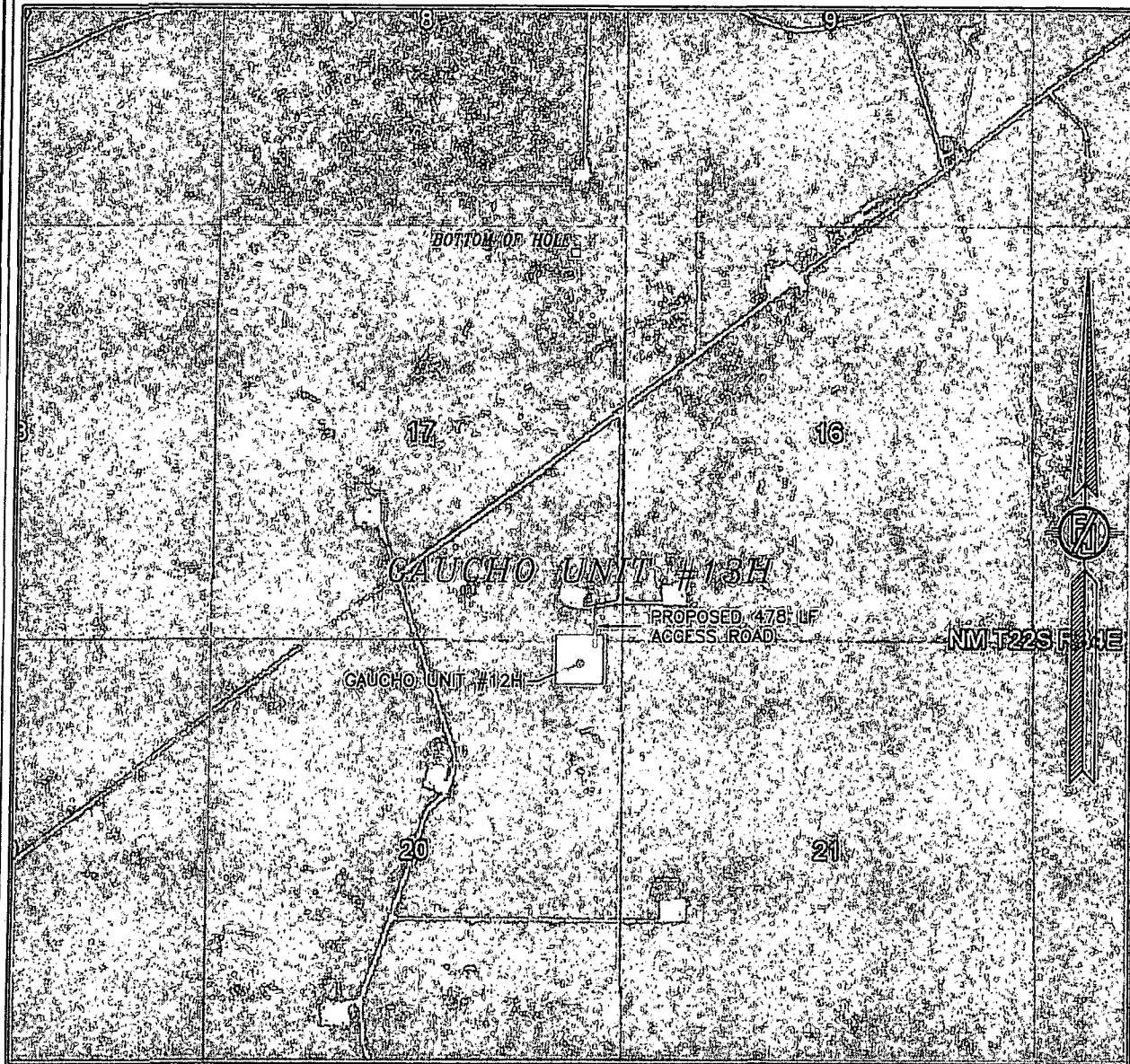
**DIRECTIONS TO LOCATION**

FROM THE INTERSECTION OF STATE HIGHWAY 128 AND DELAWARE BASIN ROAD GO NORTH AND EAST ON DELAWARE BASIN ROAD APPROX. 9.5 MILES TO A LEASE ROAD ON LEFT (NORTH) TURN NORTH GO APPROX. 4.0 MILES, ROAD TURNS LEFT (WEST) GO WEST APPROX. 0.45 MILES TO A 4-WAY INTERSECTION, TURN RIGHT (NORTHEAST) GO APPROX. 0.67 MILES ON EPNG PIPELINE ROAD TO LEASE ROAD ON RIGHT (EAST) TURN EAST ON LEASE ROAD GO APPROX. 0.45 MILES TO "T" INTERSECTION, TURN RIGHT (SOUTH), LOCATION IS ON LEFT (EAST) 350'.

MADRON SURVEYING, INC. 301 SOUTH CANAL (575) 234-3341

SURVEY NO. 2025A  
CARLSBAD, NEW MEXICO

SECTION 20, TOWNSHIP 22 SOUTH, RANGE 34 EAST, N.M.P.M.  
LEA COUNTY, STATE OF NEW MEXICO  
**AERIAL PHOTO**



NOT TO SCALE  
AERIAL PHOTO:  
GOOGLE EARTH  
MARCH 2012

**DEVON ENERGY PRODUCTION COMPANY, L.P.**

**CAUCHO UNIT #13H**

LOCATED 225 FT. FROM THE NORTH LINE  
AND 575 FT. FROM THE EAST LINE OF  
SECTION 20, TOWNSHIP 22 SOUTH,  
RANGE 34 EAST, N.M.P.M.  
LEA COUNTY, STATE OF NEW MEXICO

DECEMBER 10, 2013

SURVEY NO. 2025A

MADRON SURVEYING, INC. 301 SOUTH CANAL (575) 234-3341 CARLSBAD, NEW MEXICO