

DISTRICT I  
1625 N. French Dr., Hobbs, NM 88240  
Phone: (505) 393-6161 Fax: (505) 393-0720

DISTRICT II  
811 S. Fort St., Artesia, NM 88210  
Phone: (505) 748-1240 Fax: (505) 748-9720

DISTRICT III  
1000 Nio Director Rd., Aztec, NM 87410  
Phone: (505) 334-6178 Fax: (505) 334-6170

DISTRICT IV  
1220 S. St. Francis Dr., Santa Fe, NM 87505  
Phone: (505) 476-3460 Fax: (505) 476-3462

State of New Mexico  
Energy, Minerals & Natural Resources Department  
OIL CONSERVATION DIVISION  
1220 South St. Francis Dr.  
Santa Fe, New Mexico 87505

Form C-102  
Revised August 1, 2011  
Submit one copy to appropriate  
District Office  
☐ AMENDED REPORT

WELL LOCATION AND ACREAGE DEDICATION PLAT

API Number <b>30-025-42336</b>	Pool Code <b>97838</b>	Pool Name <b>JENNINGS UPPER BONE SPRING SHALE</b>
Property Code	Property Name <b>RED HILLS WEST UNIT</b>	Well Number <b>011H</b>
OGRID No. <b>14744</b>	Operator Name <b>MEWBOURNE OIL COMPANY</b>	Elevation <b>3250'</b>

Surface Location									
UL or lot no.	Section	Township	Range	Lot Idn	Feet from the	North/South line	Feet from the	East/West line	County
D	10	26 S	32 E		330	NORTH	215	WEST	LEA

Bottom Hole Location If Different From Surface									
UL or lot no.	Section	Township	Range	Lot Idn	Feet from the	North/South line	Feet from the	East/West line	County
M	10	26 S	32 E		330	SOUTH	330	WEST	LEA
Dedicated Acres		Joint or Infill	Consolidated Code	Order No					
160									

No allowable will be assigned to this completion until all interests have been consolidated or a non-standard unit has been approved by the division.

<p>N 69°31'15" E 5328.4'</p> <p>330'</p> <p>215'</p> <p>S 00°39'05" E 2873.2'</p> <p>S 02°04'00" E 4690.6'</p> <p>S 00°40'03" E 2874.9'</p> <p>330'</p> <p>330'</p> <p>N 89°31'26" E 2665.8'</p>		<p>RED HILLS WEST UNIT # 011H SHL NMSP-E (NAD 83) N (Y) = 387678.3' E (X) = 746594.6' LAT. = 32° 03' 50.85"N LONG. = 103° 40' 14.64"W</p> <p>NMSP-E (NAD 27) N (Y) = 387618.8' E (X) = 705407.9' LAT. = 32.063945123"N LONG. = 103.670261595"W</p> <p>Project Area</p> <p>Producing Area</p>	<p>NW COR SEC 10 NMSP-E (NAD 83) N(Y) = 388004.6 E(X) = 746378.1</p> <p>NMSP-E (NAD 27) N(Y) = 387947.4 E(X) = 705189.4</p>	<p>NE COR SEC 10 NMSP-E (NAD 83) N(Y) = 388049.4 E(X) = 751702.2</p> <p>NMSP-E (NAD 27) N(Y) = 387981.9 E(X) = 710615.6</p>
<p>N 89°30'48" E 2663.9'</p>		<p>RED HILLS WEST UNIT # 011H BHL NMSP-E (NAD 83) N (Y) = 382989.7' E (X) = 746763.7' LAT. = 32° 03' 04.28"N LONG. = 103° 40' 13.00"W</p> <p>NMSP-E (NAD 27) N (Y) = 382932.4' E (X) = 705576.9' LAT. = 32.051059598"N LONG. = 103.669809365"W</p>	<p>SW COR SEC 10 NMSP-E (NAD 83) N(Y) = 382658.8 E(X) = 746438.9</p> <p>NMSP-E (NAD 27) N(Y) = 382699.8 E(X) = 705250.8</p>	<p>SE COR SEC 10 NMSP-E (NAD 83) N(Y) = 382701.6 E(X) = 751763.6</p> <p>NMSP-E (NAD 27) N(Y) = 382644.6 E(X) = 710580.3</p>

**OPERATOR CERTIFICATION**

I hereby certify that the information contained herein is true and complete to the best of my knowledge and belief, and that this organization either owns a working interest or unleased mineral interest in the land including the proposed bottom hole location or has a right to drill this well at this location pursuant to a contract with an owner of such a mineral or working interest, or to voluntary pooling agreement or a compulsory pooling order heretofore entered by the division.

*[Signature]* 7-1-14  
Signature Date  
**BLADEX BIS HOP**  
Print Name  
E-mail Address

**SURVEYORS CERTIFICATION**

I hereby certify that the well location shown on this plat was plotted from field notes of actual surveys made by me or under my supervision, and that the same is true and correct to the best of my belief.

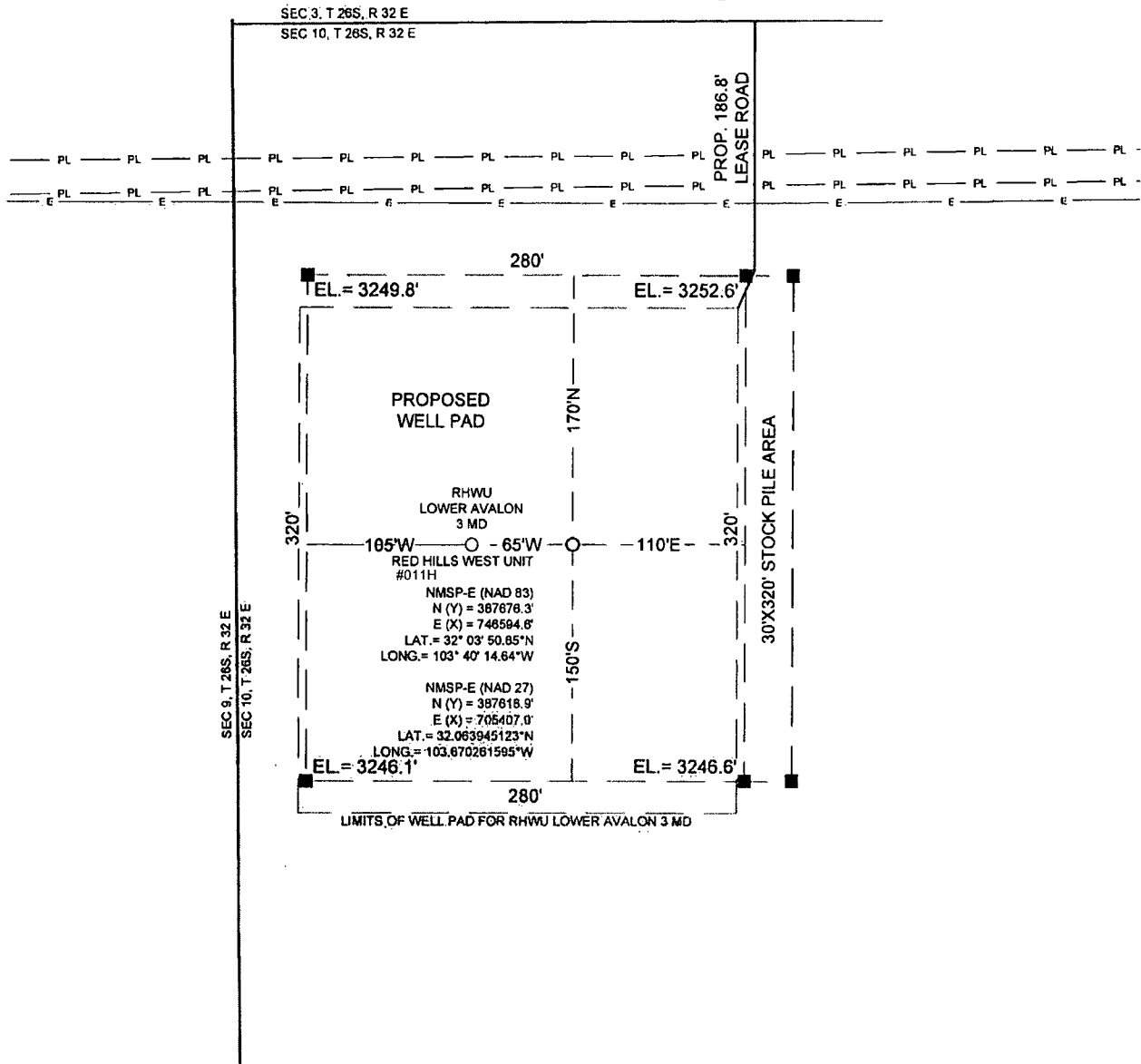
APRIL 29, 2013  
Date of Survey

Signature and Seal of Professional Surveyor  
*[Signature]*  
**JAMES E. TOMPKINS**  
Job No.: WTC49058  
JAMES E. TOMPKINS 14729  
Certificate Number

DEC 15 2014

Exhibit "3"

# SITE LOCATION



0 50 100 200

GRAPHIC SCALE 1" = 100'

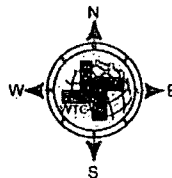
SECTION 10, T 26 S, R 32 E, N.M.P.M.

COUNTY: LEA STATE: NM

DESCRIPTION: 330' FNL & 215' FWL

OPERATOR: MEWBOURNE OIL COMPANY

WELL NAME: RED HILLS WEST UNIT #011H



## DRIVING DIRECTIONS:

From the intersection of New Mexico State Highway 128 and Lea County Road 1. Go south 10.4 miles on Lea County Road 1 to El Paso Right of Way. Go east 0.5 mile to begin road.



**WEST TEXAS CONSULTANTS, INC.**  
ENGINEERS PLANNERS SURVEYORS  
405 S.W. 1st. STREET  
ANDREWS, TEXAS 79714  
(432) 523-2181

**MEWBOURNE OIL COMPANY**

JOB No.: WTC49059

Exhibit "3A"

# AERIAL MAP



0 1000 2000 4000

GRAPHIC SCALE 1" = 2000'

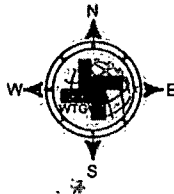
SECTION 10, T 26 S, R 32 E, N.M.P.M.

COUNTY: LEA STATE: NM

DESCRIPTION: 330' FNL & 215' FWL

OPERATOR: MEWBOURNE OIL COMPANY

WELL NAME: RED HILLS WEST UNIT #011H



## DRIVING DIRECTIONS:

From the intersection of New Mexico State Highway 128 and Lea County Road 1. Go south 10.4 miles on Lea County Road 1 to El Paso Right of Way. Go east 0.5 mile to begin road.



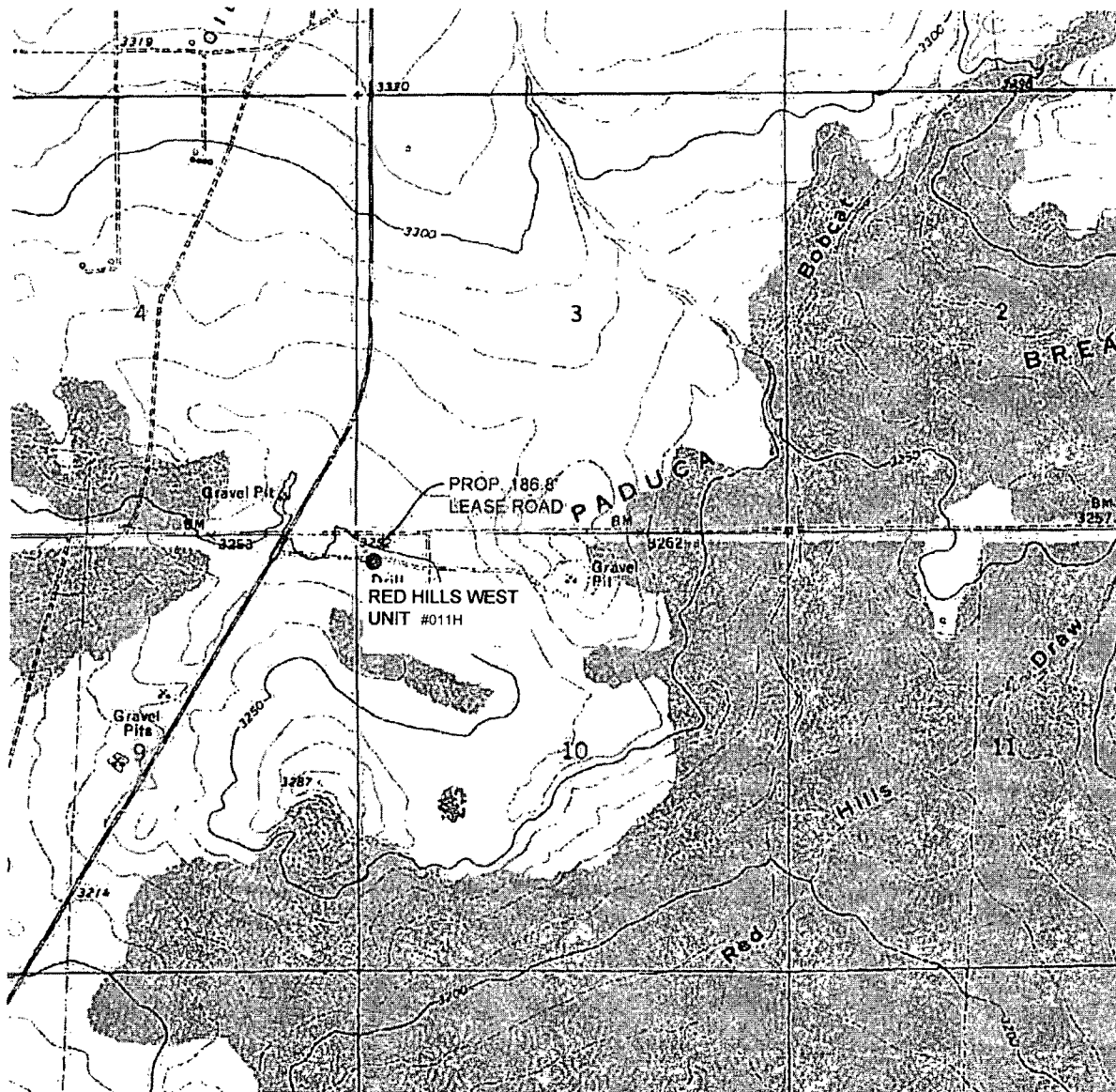
WEST TEXAS CONSULTANTS, INC.  
ENGINEERS PLANNERS SURVEYORS  
405 S.W. 1st STREET  
ANDREWS, TEXAS 79714  
(432) 523-2181

MEWBOURNE OIL COMPANY

JOB No.: WTC49058

Exhibit "3B"

## LOCATION VERIFICATION MAP



0 1000 2000 4000

GRAPHIC SCALE 1" = 2000'

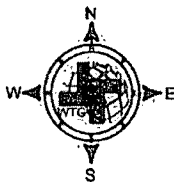
SECTION 10, T 26 S, R 32 E, N.M.P.M.

COUNTY: LEA STATE: NM

DESCRIPTION: 330' FNL & 215' FWL

OPERATOR: MEWBOURNE OIL COMPANY

WELL NAME: RED HILLS WEST UNIT #011H.



### DRIVING DIRECTIONS:

From the intersection of New Mexico State Highway 128 and Lea County Road 1. Go south 10.4 miles on Lea County Road 1 to El Paso Right of Way. Go east 0.5 mile to begin road.



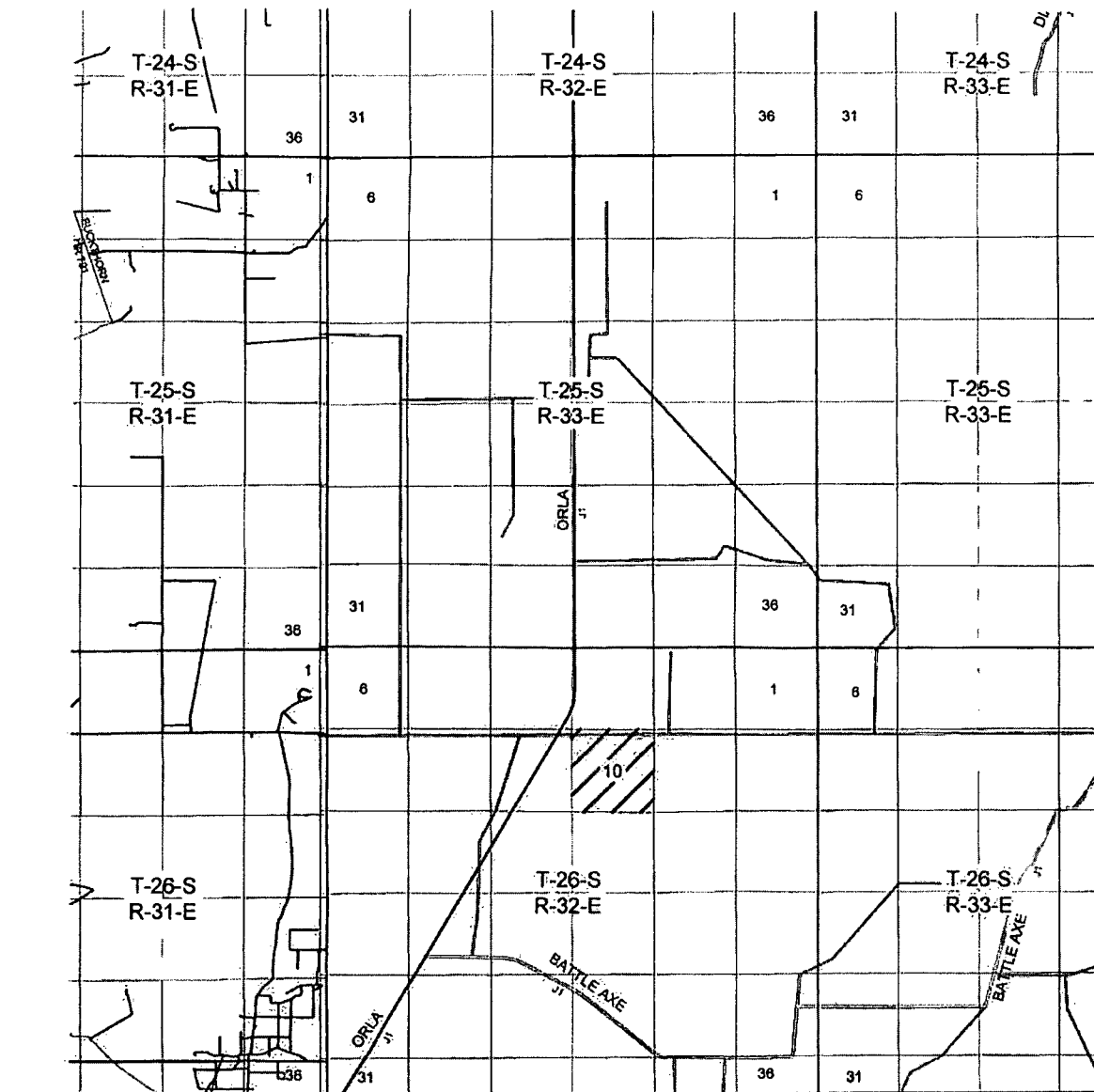
WEST TEXAS CONSULTANTS, INC.  
ENGINEERS PLANNERS SURVEYORS  
405 S.W. 1st STREET  
ANDREWS, TEXAS 79714  
(432) 523-2181

MEWBOURNE OIL COMPANY

JOB No.: WTC49058

Exhibit "3c"

# VICINITY MAP



0 2 4 6  
GRAPHIC SCALE 1" = 2 MILE

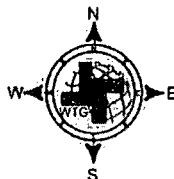
SECTION 10, T 26 S, R 32 E, N.M.P.M.

COUNTY: LEA STATE: NM

DESCRIPTION: 330' FNL & 215' FWL

OPERATOR: MEWBOURNE OIL COMPANY

WELL NAME: RED HILLS WEST UNIT #011H



## DRIVING DIRECTIONS:

From the intersection of New Mexico State Highway 128 and Lea County Road 1. Go south 10.4 miles on Lea County Road 1 to El Paso Right of Way. Go east 0.5 mile to begin road.



WEST TEXAS CONSULTANTS, INC.  
ENGINEERS PLANNERS SURVEYORS  
405 S.W. 1st STREET  
ANDREWS, TEXAS 79714  
(432) 523-2191

MEWBOURNE OIL COMPANY

JOB No.: WTC49058

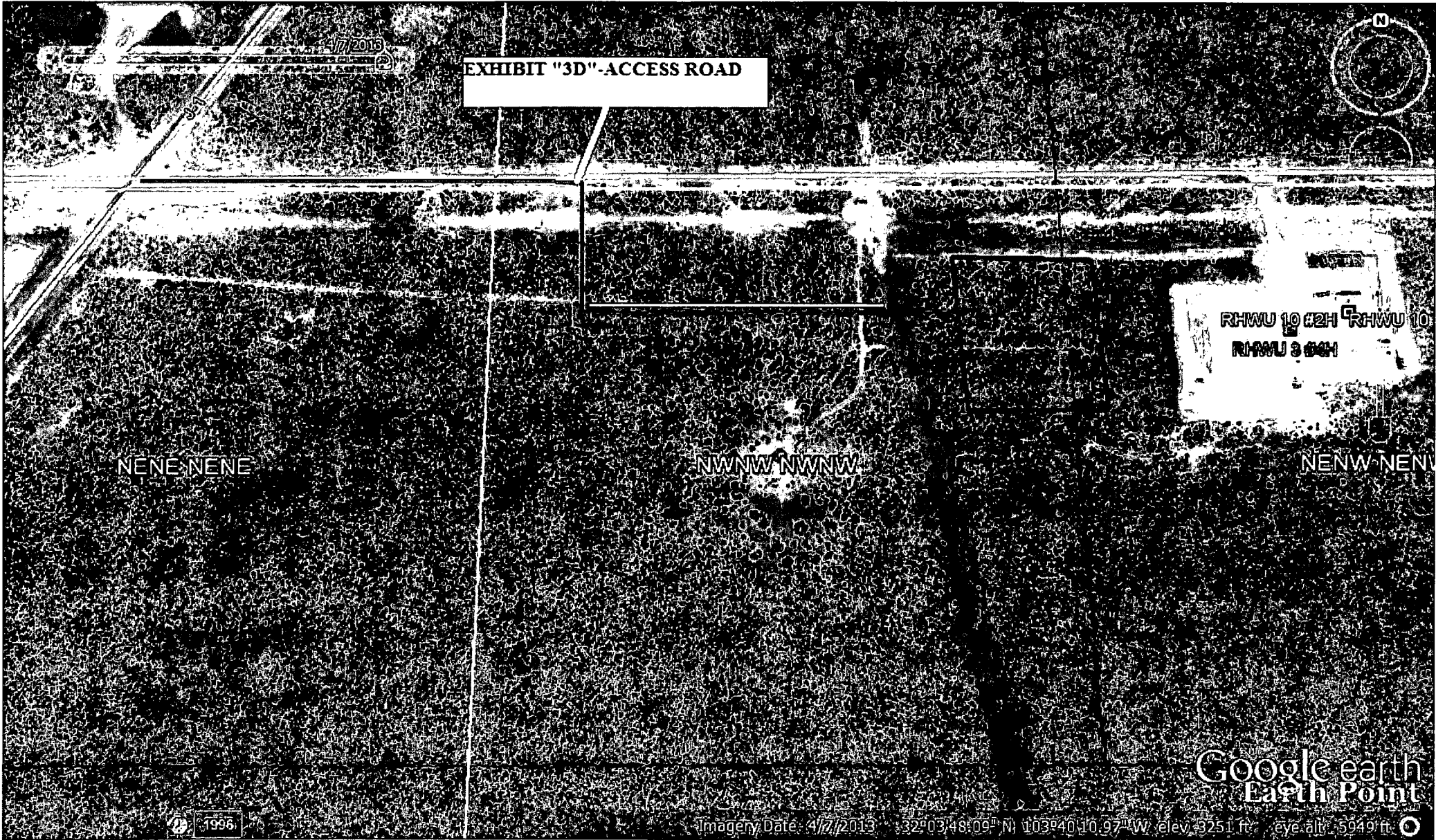


EXHIBIT "3D"-ACCESS ROAD

NENE NENE

NWNW NWNW

NENW NENW

RHWU 10 02H RHWU 10  
RHWU 3 04H

Google earth  
Earth Point

Imagery Date: 4/7/2013 32°03'48.09" N 103°40'10.97" W elev: 3251 ft eye alt: 5949 ft

4/7/2013

EXHIBIT "3E

Electric Line

Flow Line

RHWU

RHWL

NE NENE

NWNW NWNW

GOO  
Ba



1996

Imagery Date: 4/7/2013 32°03'48.09" N 103°40'10.97" W elev 3251 ft

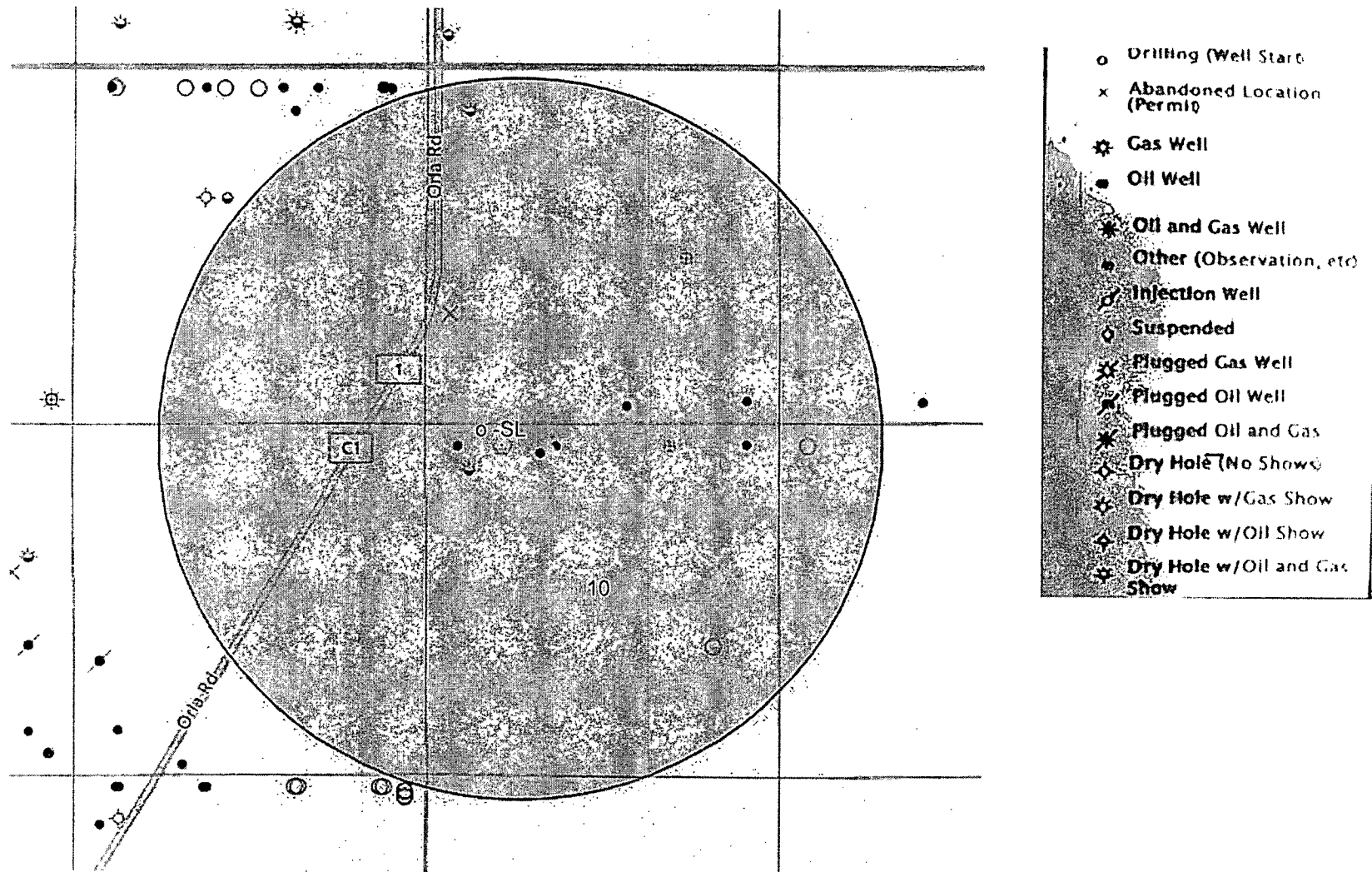


Exhibit "4" - SL - Red Hills West Unit #011H - Sec. 10 T26S R32E, Lea Co. NM

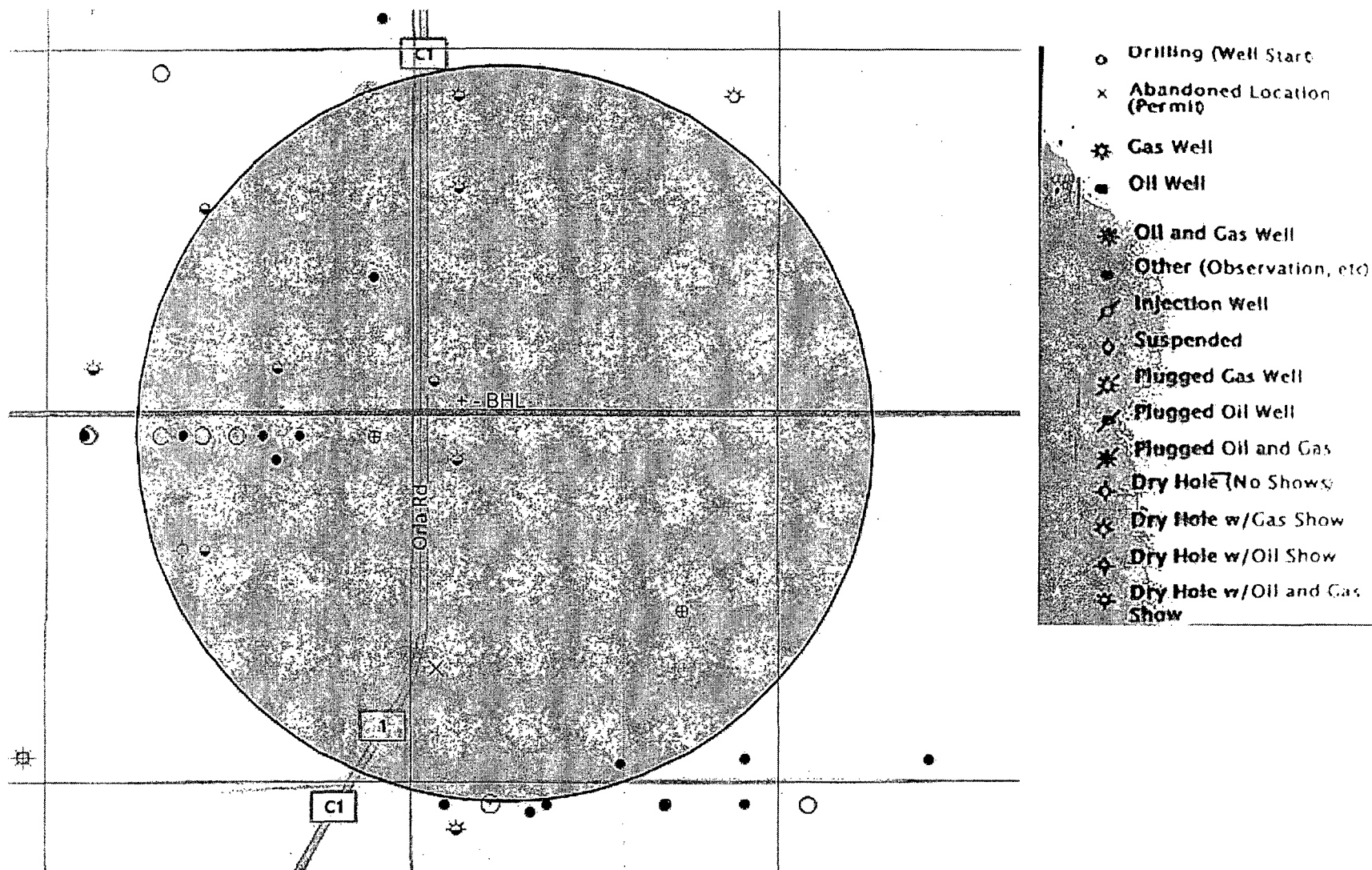


Exhibit "4A" - BHL - Red Hills West Unit #011H - Sec. 10 T26S R32E, Lea Co. NM