

**DISTRICT I**  
1625 N. French Dr., Hobbs, NM 88240  
Phone: (575) 393-6161 Fax: (575) 393-0720

**DISTRICT II**  
811 S. First St., Artesia, NM 88210  
Phone: (575) 748-1283 Fax: (575) 748-0720

**DISTRICT III**  
1000 Rio Brazos Rd., Aztec, NM 87410  
Phone: (505) 334-6178 Fax: (505) 334-6170

**DISTRICT IV**  
1220 S. St. Francis Dr., Santa Fe, NM 87505  
Phone: (505) 476-3460 Fax: (505) 476-3462

State of New Mexico  
Energy, Minerals & Natural Resources Department

OIL CONSERVATION DIVISION  
1220 South St. Frances Dr.  
Santa Fe, NM 87505

Form C-102  
Revised August 1, 2011  
Submit one copy to appropriate  
District Office

☐ AMENDED REPORT

WELL LOCATION AND ACREAGE DEDICATION PLAT

API Number <b>30-025-42344</b>	Pool Code 37570	Pool Name Lea Bone Spring
Property Code 302802	Property Name LEA UNIT	Well Number 34H
OGRID No. <b>240974</b>	Operator Name LEGACY RESERVES OPERATING LP	Elevation 3658'

Surface Location

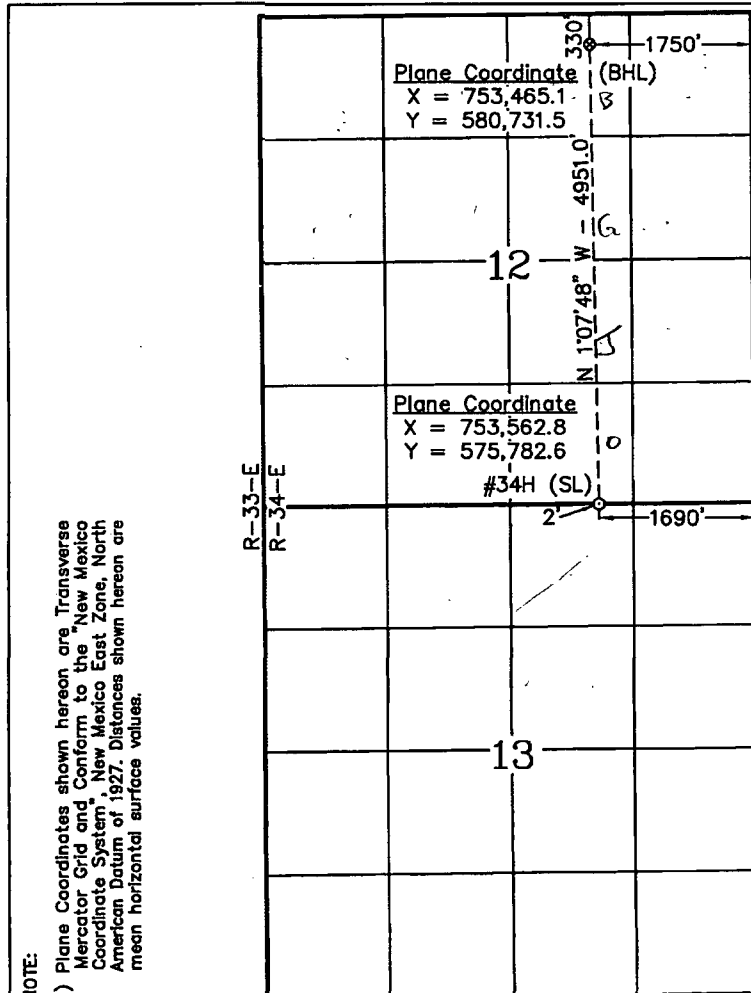
UL or lot No.	Section	Township	Range	Lot Idn	Feet from the	North/South line	Feet from the	East/West line	County
B	13	20 S	34 E		2	NORTH	1690	EAST	LEA

Bottom Hole Location If Different From Surface

UL or lot No.	Section	Township	Range	Lot Idn	Feet from the	North/South line	Feet from the	East/West line	County
B	12	20 S	34 E		330	NORTH	1750	EAST	LEA

Dedicated Acres	Joint or Infill	Consolidation Code	Order No.
160			

NO ALLOWABLE WILL BE ASSIGNED TO THIS COMPLETION UNTIL ALL INTERESTS HAVE BEEN CONSOLIDATED OR A NON-STANDARD UNIT HAS BEEN APPROVED BY THE DIVISION



<b>OPERATOR CERTIFICATION</b>	
I hereby certify that the information contained herein is true and complete to the best of my knowledge and belief, and that this organization either owns a working interest or unleased mineral interest in the land including the proposed bottom hole location or has a right to drill this well at this location pursuant to a contract with an owner of such a mineral or working interest, or is a voluntary pooling agreement or a compulsory pooling order heretofore entered by the division.	
Signature 	Date 05/28/2014
Printed Name Steve Morris	
E-mail Address steve.morris@mojocorp.ca	
<b>SURVEYOR CERTIFICATION</b>	
I hereby certify that the well location shown on this plat was plotted from field notes of actual surveys made by me or under my supervision, and that the same is true and correct to the best of my belief.	
Date of Survey February 18, 2014	
Signature & Seal of Professional Surveyor 	
W.O. Num. 2014-0147	
Certificate No.	Macon McDonald 12185

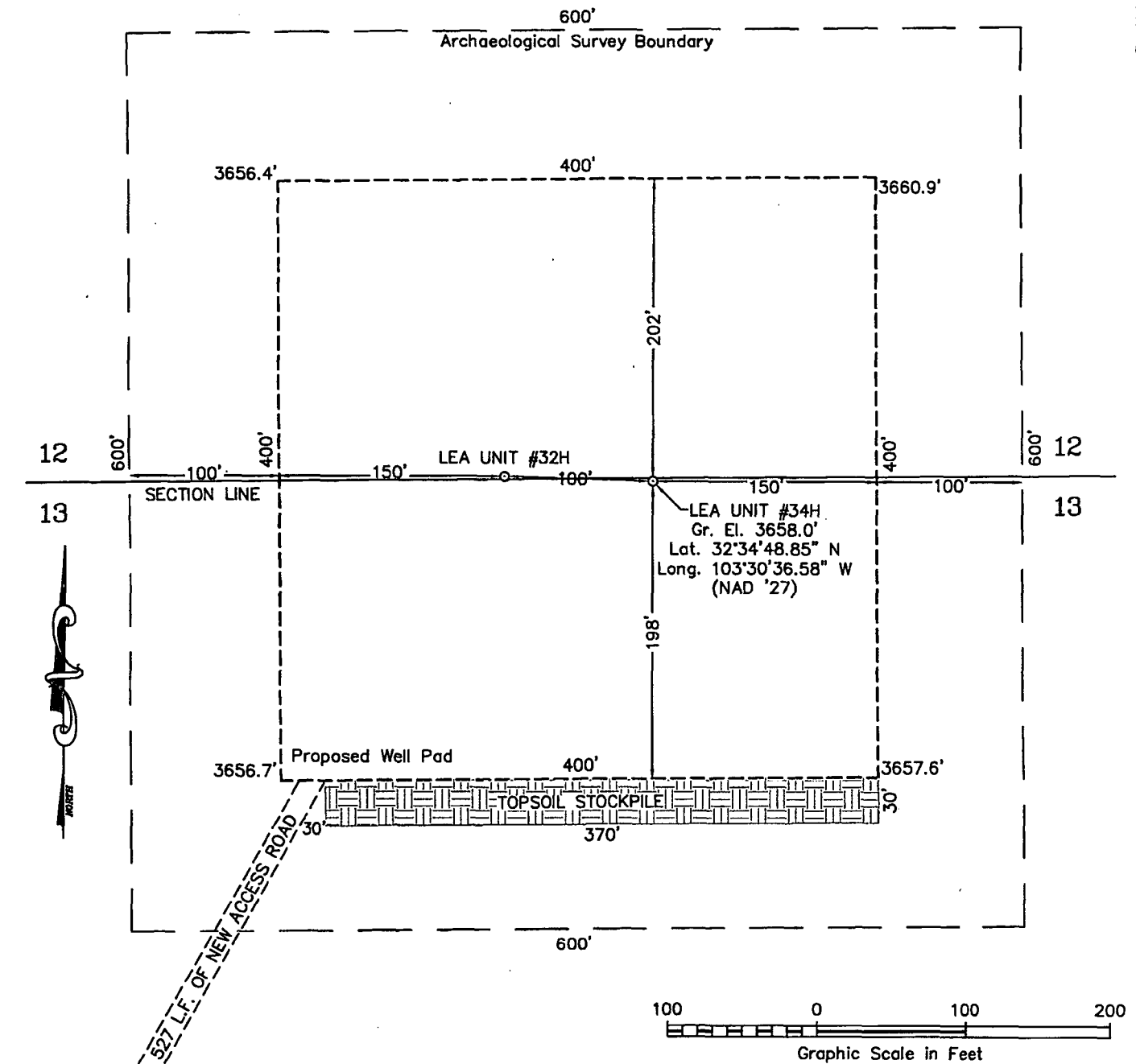
DEC 18 2014

# SECTION 13, TOWNSHIP 20 SOUTH, RANGE 34 EAST, N.M.P.M.

LEA COUNTY

NEW MEXICO

L-2014-0147-B



## DRIVING DIRECTIONS

FROM THE INTERSECTION OF STATE HIGHWAY 18 AND U.S. HIGHWAY 62-180 IN HOBBS, NEW MEXICO GO WEST AND SOUTHWEST ON U.S. HIGHWAY 62-180 23.6 MILES TO MARATHON ROAD ON SOUTH (LEFT) SIDE OF THE HIGHWAY, THEN GO SOUTH 3.9 MILES TO ANOTHER LEASE ROAD ON THE EAST (LEFT) SIDE OF THE ROAD, THEN GO EAST 150 FEET TO A POINT APPROXIMATELY 800 FEET SOUTH OF THE PROPOSED LOCATION.



FIRM REGISTRATION NUMBER: 100682-00  
110 W. LOUISIANA, STE. 110  
MIDLAND TEXAS, 79701  
(432) 687-0865 - (432) 687-0868 FAX

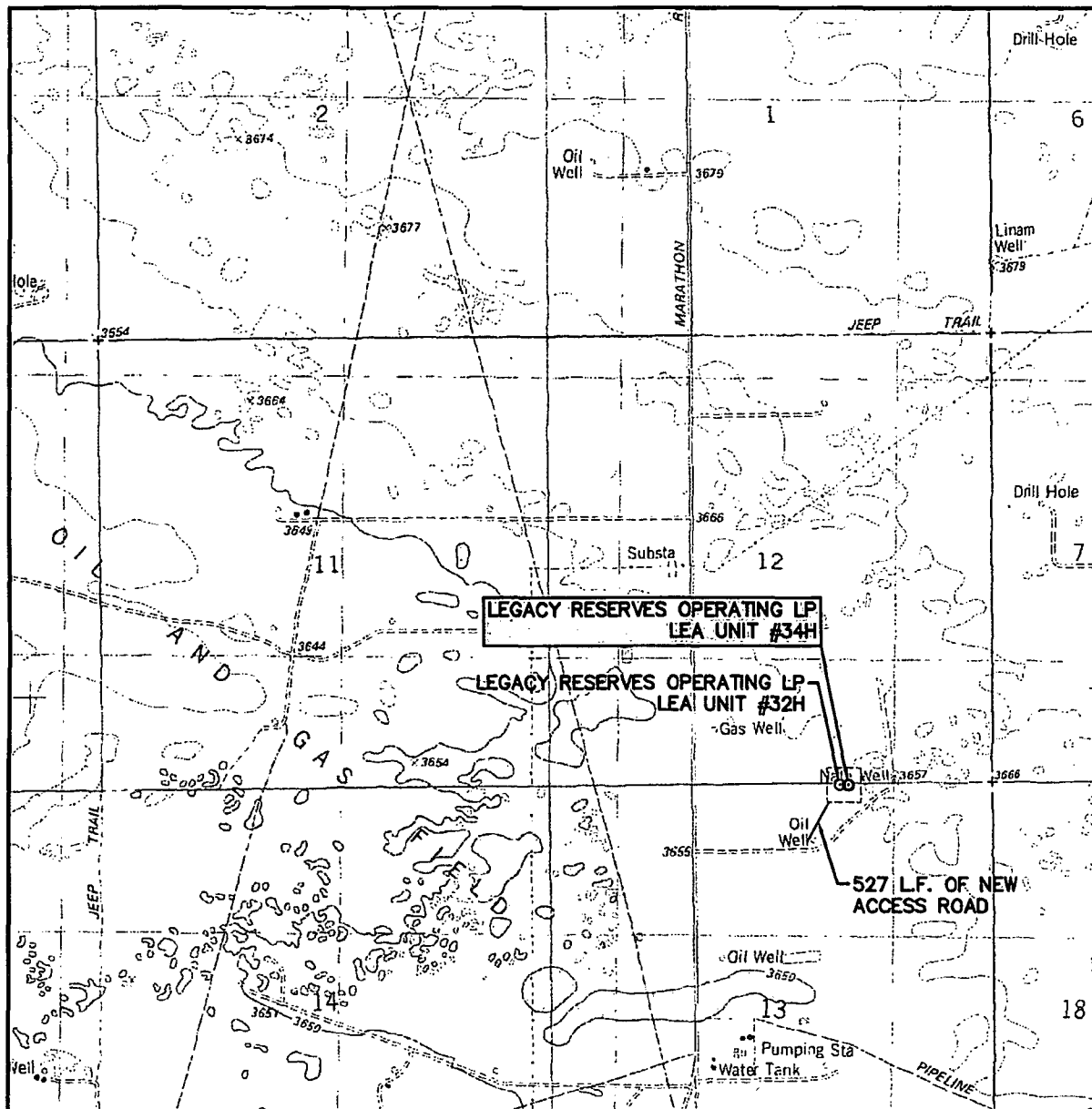
## LEGACY RESERVES OPERATING LP

### LEA UNIT #34H

Located 2' FNL & 1690' FEL, Section 13  
Township 20 South, Range 34 East, N.M.P.M.  
Lea County, New Mexico

Drawn By: SC	Date: February 24, 2014
Scale: 1" = 100'	Field Book: 599 / 16-18
Revision Date:	Quadrangle: Lea
W.O. No: 2014-0147	Dwg. No.: L-2014-0147-B

# LOCATION VERIFICATION MAP



SCALE: 1" = 2000'

CONTOUR INTERVAL:  
LEA - 10'

SEC. 13 TWP. 20-S RGE. 34-E

SURVEY N.M.P.M.

COUNTY LEA

DESCRIPTION 2' FNL & 1690' FEL

ELEVATION 3658'

OPERATOR LEGACY RESERVES OPERATING LP

LEASE LEA UNIT

U.S.G.S. TOPOGRAPHIC MAP  
LEA



FIRM REGISTRATION NUMBER: 100682-00  
110 W. LOUISIANA, STE. 110  
MIDLAND TEXAS, 79701  
(432) 687-0865 - (432) 687-0868 FAX





---

*New Mexico Office of the State Engineer*  
**Active & Inactive Points of Diversion**  
(with Ownership Information)

---

No PODs found.

**PLSS Search:**

**Section(s):** 13

**Township:** 20S

**Range:** 34E



---

# *New Mexico Office of the State Engineer* **Water Column/Average Depth to Water**

---

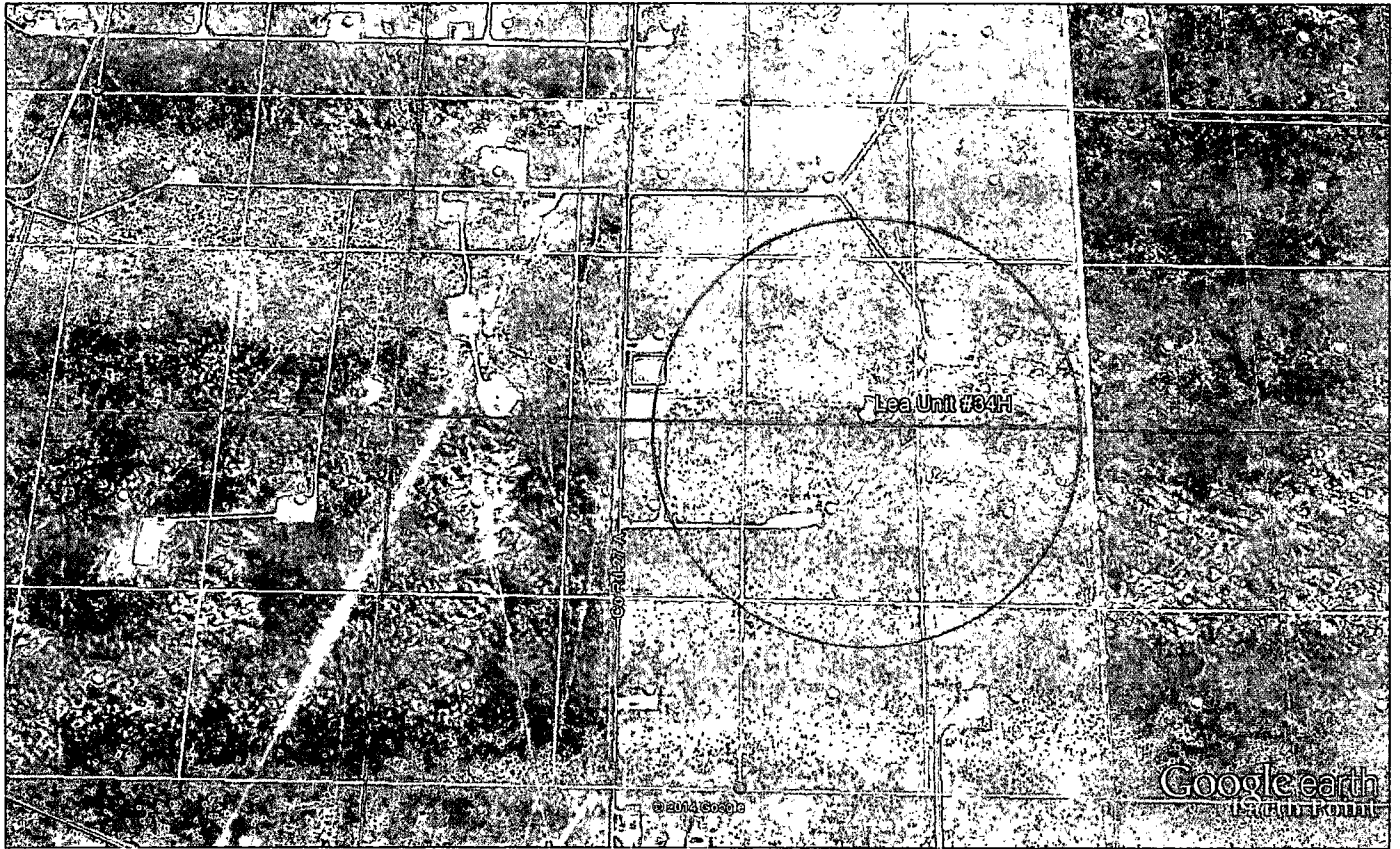
No records found.

**PLSS Search:**

**Section(s):** 13

**Township:** 20S

**Range:** 34E



Google earth

feet 4000  
km 1



## 400

