

DEC 26 2014

District I

1625 N. French Dr., Hobbs, NM 88240
Phone: (575) 393-6161 Fax: (575) 393-6162

District II

811 S. First St., Artesia, NM 88210
Phone: (575) 748-1283 Fax: (575) 748-9720

District III

1000 Rio Brazos Road, Aztec, NM 87410
Phone: (505) 334-6175 Fax: (505) 334-6170

District IV

1220 S. St. Francis Dr., Santa Fe, NM 87505
Phone: (505) 476-3460 Fax: (505) 476-3462

State of New Mexico

Energy, Minerals & Natural Resources Department

OIL CONSERVATION DIVISION

1220 South St. Francis Dr.

Santa Fe, NM 87505

Form C-102

Revised August 1, 2011

Submit one copy to appropriate

District Office

☒ AMENDED REPORT

WELL LOCATION AND ACREAGE DEDICATION PLAT

¹ API Number 30-025-40719	² Pool Code 96193	³ Pool Name BRIANNA STOO; DELAWARE
⁴ Property Code 30884	⁵ Property Name THISTLE UNIT	
⁶ Well Number 34H		
⁷ OGRID No. 6137	⁸ Operator Name DEVON ENERGY PRODUCTION COMPANY, L.P.	
	⁹ Elevation 3660.8	

¹⁰ Surface Location

UL or lot no.	Section	Township	Range	Lot Idn	Feet from the	North/South line	Feet from the	East/West line	County
N	33	23 S	33 E		355	SOUTH	1525	WEST	LEA

" Bottom Hole Location If Different From Surface

U/L or lot no.	Section	Township	Range	Lot Idn	Feet from the	North/South line	Feet from the	East/West line	County
C	33	23 S	33 E		330	NORTH	2032	WEST	LEA

¹² Dedicated Acres	¹³ Joint or Infill	¹⁴ Consolidation Code	¹⁵ Order No.
160			

No allowable will be assigned to this completion until all interests have been consolidated or a non-standard unit has been approved by the division.

N89°39'51"E 2638.55 FT

NW CORNER SEC. 33
LAT. = 32.2684591°N
LONG. = 103.5858093°W

NMSP EAST (FT)
N = 462203.15
E = 772366.14

2032'

330'

BOTTOM OF HOLE

BOTTOM OF HOLE
LAT. = 32.2675458°N
LONG. = 103.5792363°W

NMSP EAST (FT)
N = 461885.13
E = 774420.15

W O CORNER SEC. 33
LAT. = 32.2611767°N
LONG. = 103.5858055°W

NMSP EAST (FT)
N = 459553.86
E = 772405.77

THISTLE UNIT 34H
ELEV. = 3660.8'
LAT. = 32.2548873°N (NAD83)
LONG. = 103.5808706°W

NMSP EAST (FT)
N = 457276.47
E = 773947.30

SW CORNER SEC. 33
LAT. = 32.2539176°N
LONG. = 103.5858020°W

NMSP EAST (FT)
N = 456913.03
E = 772425.25

1525'

89°40'48"W 2635.72 FT

N89°39'49"E 2635.79 FT

NE CORNER SEC. 33
LAT. = 32.2684420°N
LONG. = 103.5687493°W

NMSP EAST (FT)
N = 462234.08
E = 777859.34

NOTE:
LATITUDE AND LONGITUDE COORDINATES
ARE SHOWN USING THE NORTH
AMERICAN DATUM OF 1983 (NAD83).
LISTED NEW MEXICO STATE PLANE EAST
COORDINATES ARE GRID (NAD83), BASIS
OF BEARING AND DISTANCES USED ARE
NEW MEXICO STATE PLANE EAST
COORDINATES MODIFIED TO THE
SURFACE.

E O CORNER SEC. 33
LAT. = 32.2611700°N
LONG. = 103.5687420°W

NMSP EAST (FT)
N = 459588.56
E = 777680.44

SE CORNER SEC. 33
LAT. = 32.2539037°N
LONG. = 103.5687408°W

NMSP EAST (FT)
N = 456945.13
E = 777699.63

89°37'22"W 2639.81 FT

17 OPERATOR CERTIFICATION

I hereby certify that the information contained herein is true and complete to the best of my knowledge and belief, and that this organization either owns a working interest or unleased mineral interest in the land including the proposed bottom hole location or has a right to drill this well at this location pursuant to a contract with an owner of such a mineral or working interest, or to a voluntary pooling agreement or a compulsory pooling order heretofore entered by the Division.

[Signature]

Signature

12/22/2014

Date

David H. Cook Regulatory Specialist

Printed Name

david.cook@dmn.com

E-mail Address

18 SURVEYOR CERTIFICATION

I hereby certify that the well location shown on this plat was plotted from field notes of actual surveys made by me or under my supervision and that the same is true and correct to the best of my belief.

OCTOBER 25, 2014

Date of Survey

[Signature]

Signature and Seal of Professional Surveyor

Certificate Number: FILMONT SURVAILLO, PLS 12797

SURVEY NO. 3449

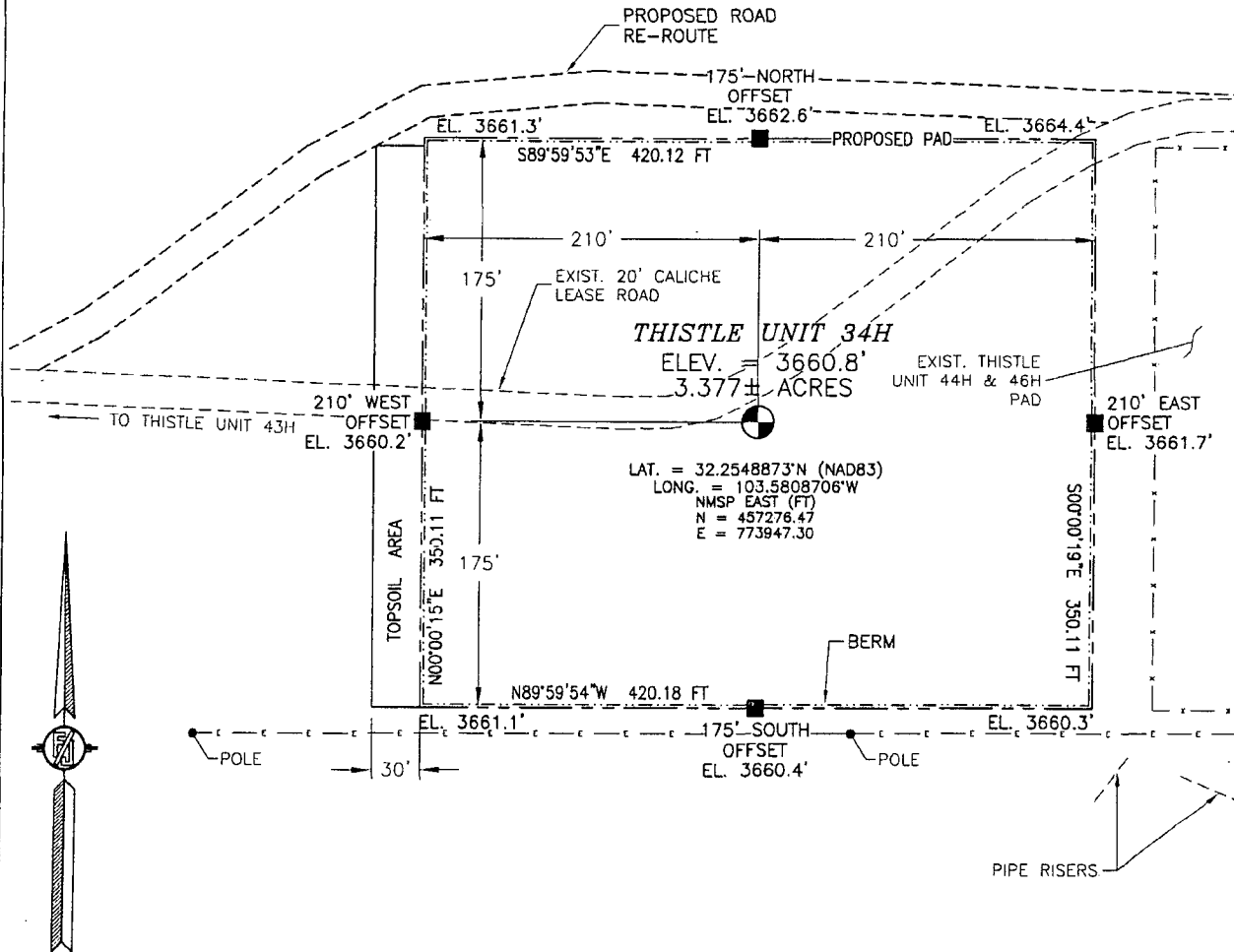
~~A~~ Amended

DEC 29 2014

SECTION 33, TOWNSHIP 23 SOUTH, RANGE 33 EAST, N.M.P.M.
LEA COUNTY, STATE OF NEW MEXICO

SITE MAP

NOTE: LATITUDE AND LONGITUDE COORDINATES ARE SHOWN USING THE NORTH AMERICAN DATUM OF 1983 (NAD83). LISTED NEW MEXICO STATE PLANE EAST COORDINATES ARE GRID (NAD83). BASIS OF BEARING AND DISTANCES USED ARE NEW MEXICO STATE PLANE EAST COORDINATES MODIFIED TO THE SURFACE



010 50 100 200
SCALE 1" = 100'

DIRECTIONS TO LOCATION

FROM THE INTERSECTION OF STATE HIGHWAY 128 (JAL. HIGHWAY) AND CR 2 (BRININSTOOL ROAD) GO NORTH ON CR 2 3.15 MILES JUST PAST CATTLE GUARD, TURN LEFT GO WEST ON CALICHE LEASE ROAD THROUGH EXISTING PAD 0.61 MILES TO NORTHEAST CORNER OF PROPOSED PAD. SITE LIES JUST WEST OF EXISTING PAD FOR THISTLE UNIT 44H & 46H.

DEVON ENERGY PRODUCTION COMPANY, L.P.
THISTLE UNIT 34H

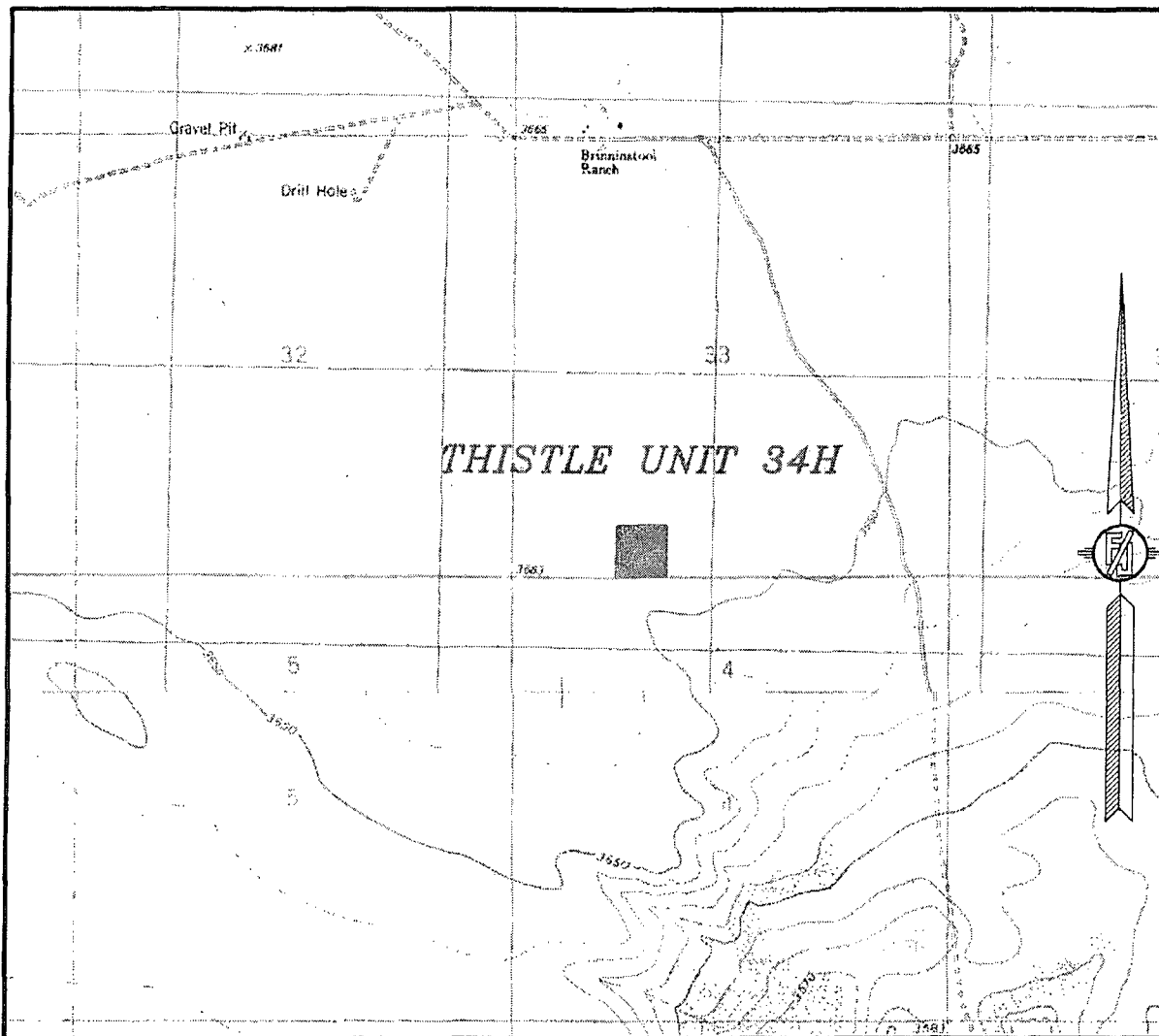
LOCATED 355 FT. FROM THE SOUTH LINE
AND 1525 FT. FROM THE WEST LINE OF
SECTION 33, TOWNSHIP 23 SOUTH,
RANGE 33 EAST, N.M.P.M.
LEA COUNTY, STATE OF NEW MEXICO

OCTOBER 25, 2014

SURVEY NO. 3449

MADRON SURVEYING, INC. 301 SOUTH CANAL (575) 234-3341 CARLSBAD, NEW MEXICO

SECTION 33, TOWNSHIP 23 SOUTH, RANGE 33 EAST, N.M.P.M.
LEA COUNTY, STATE OF NEW MEXICO
LOCATION VERIFICATION MAP



USGS QUAD MAP:
TIP TOP WELLS

NOT TO SCALE

DEVON ENERGY PRODUCTION COMPANY, L.P.
THISTLE UNIT 34H

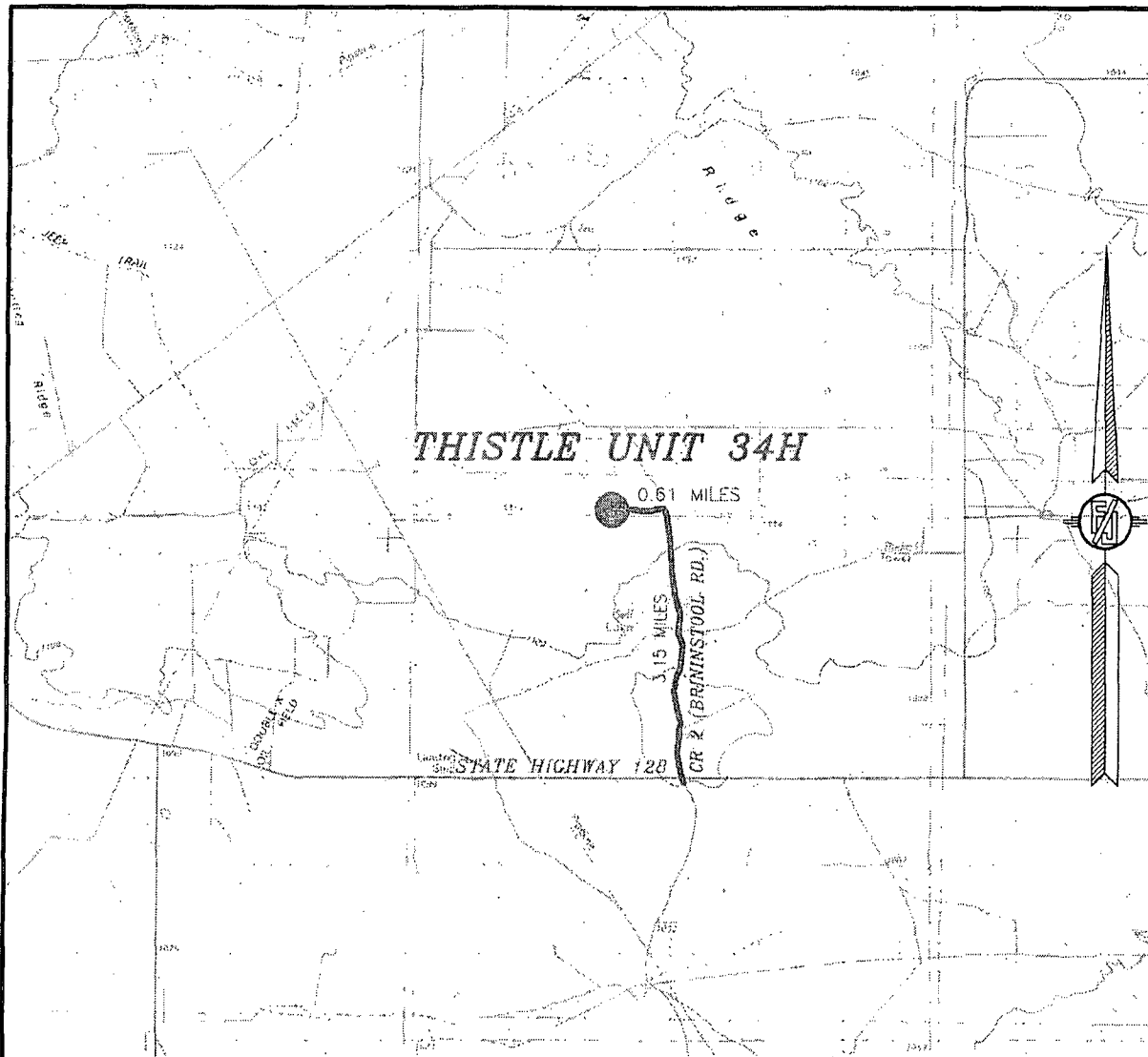
LOCATED 355 FT. FROM THE SOUTH LINE
AND 1525 FT. FROM THE WEST LINE OF
SECTION 33, TOWNSHIP 23 SOUTH,
RANGE 33 EAST, N.M.P.M.
LEA COUNTY, STATE OF NEW MEXICO

OCTOBER 25, 2014

SURVEY NO. 3449

MADRON SURVEYING, INC. 301 SOUTH CANAL CARLSBAD, NEW MEXICO
(575) 234-3341

SECTION 33, TOWNSHIP 23 SOUTH, RANGE 33 EAST, N.M.P.M.
LEA COUNTY, STATE OF NEW MEXICO
VICINITY MAP



DISTANCES IN MILES

NOT TO SCALE

DEVON ENERGY PRODUCTION COMPANY, L.P.
THISTLE UNIT 34H

DIRECTIONS TO LOCATION

FROM THE INTERSECTION OF STATE HIGHWAY 128 (JAL HIGHWAY) AND CR 2 (BRINSTOOL ROAD) GO NORTH ON CR 2 3.15 MILES JUST PAST CATTLE GUARD, TURN LEFT GO WEST ON CALICHE LEASE ROAD THROUGH EXISTING PAD 0.61 MILES TO NORTHEAST CORNER OF PROPOSED PAD. SITE LIES JUST WEST OF EXISTING PAD FOR THISTLE UNIT 44H & 46H.

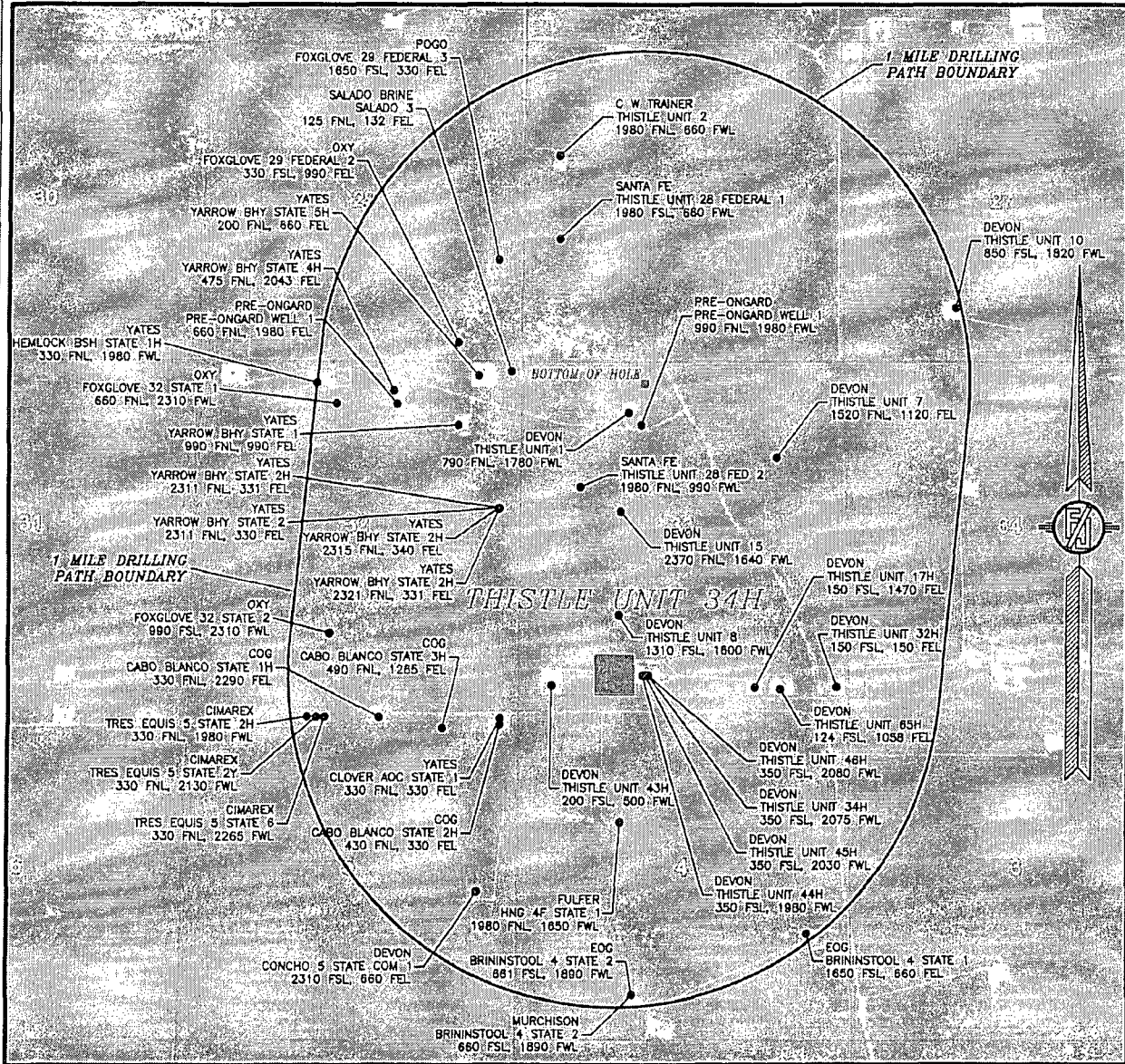
LOCATED 355 FT. FROM THE SOUTH LINE
AND 1525 FT. FROM THE WEST LINE OF
SECTION 33, TOWNSHIP 23 SOUTH,
RANGE 33 EAST, N.M.P.M.
LEA COUNTY, STATE OF NEW MEXICO

OCTOBER 25, 2014

MADRON SURVEYING, INC. 301 SOUTH CANAL (575) 234-3341 CARLSBAD, NEW MEXICO

SURVEY NO. 3449

SECTION 33, TOWNSHIP 23 SOUTH, RANGE 33 EAST, N.M.P.M.
LEA COUNTY, STATE OF NEW MEXICO
AERIAL PHOTO



NOT TO SCALE
AERIAL PHOTO:
GOOGLE EARTH
FEBRUARY 2014

DEVON ENERGY PRODUCTION COMPANY, L.P.

THISTLE UNIT 34H

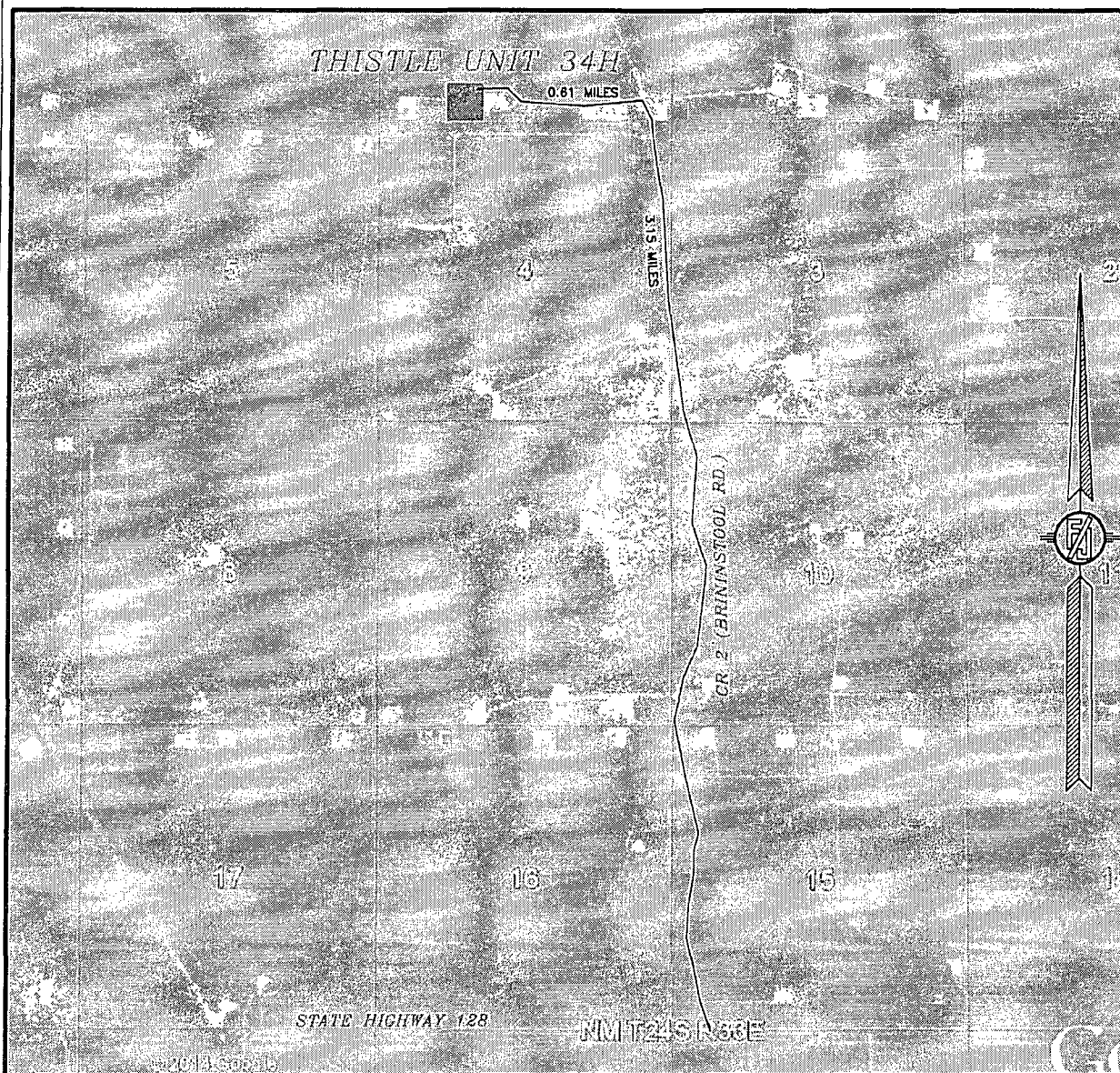
LOCATED 355 FT. FROM THE SOUTH LINE
AND 1525 FT. FROM THE WEST LINE OF
SECTION 33, TOWNSHIP 23 SOUTH,
RANGE 33 EAST, N.M.P.M.
LEA COUNTY, STATE OF NEW MEXICO

OCTOBER 25, 2014

SURVEY NO. 3449

MADRON SURVEYING, INC. 301 SOUTH CANAL (575) 234-3341 CARLSBAD, NEW MEXICO

SECTION 33, TOWNSHIP 23 SOUTH, RANGE 33 EAST, N.M.P.M.
LEA COUNTY, STATE OF NEW MEXICO
ACCESS AERIAL ROUTE MAP



NOT TO SCALE
AERIAL PHOTO:
GOOGLE EARTH
FEBRUARY 2014

DEVON ENERGY PRODUCTION COMPANY, L.P.

THISTLE UNIT 34H

LOCATED 355 FT. FROM THE SOUTH LINE
AND 1525 FT. FROM THE WEST LINE OF
SECTION 33, TOWNSHIP 23 SOUTH,
RANGE 33 EAST, N.M.P.M.
LEA COUNTY, STATE OF NEW MEXICO

OCTOBER 25, 2014

SURVEY NO. 3449

MADRON SURVEYING, INC. 301 SOUTH CANAL (575) 234-3341 CARLSBAD, NEW MEXICO