

DISTRICT I
1625 N. French Dr., Hobbs, NM 88240
Phone: (575) 393-6161 Fax: (575) 393-0720

DISTRICT II
811 S. First St., Artesia, NM 88210
Phone: (575) 748-1283 Fax: (575) 748-9720

DISTRICT III
1000 Rio Brazos Road, Aztec, NM 87410
Phone: (505) 334-6178 Fax: (505) 334-6170

DISTRICT IV
1220 S. St. Francis Dr., Santa Fe, NM 87505
Phone: (505) 476-3460 Fax: (505) 476-3462

State of New Mexico
Energy, Minerals & Natural Resources Department
OIL CONSERVATION DIVISION
1220 South St. Francis Dr.
Santa Fe, New Mexico 87505

Form C-102
Revised August 1, 2011
Submit one copy to appropriate
District Office

AMENDED REPORT

WELL LOCATION AND ACREAGE DEDICATION PLAT

API Number 30-025- 42358	Pool Code 37580	Pool Name LEA-BONE SPRING SOUTH
Property Code 313780	Property Name IGLOO 19 STATE	Well Number 4H
OGRID No. 249099	Operator Name CAZA OPERATING, LLC	Elevation 3692'

Surface Location

UL or lot No.	Section	Township	Range	Lot Idn	Feet from the	North/South line	Feet from the	East/West line	County
O	19	20-S	35-E		200	SOUTH	2000	EAST	LEA

Bottom Hole Location If Different From Surface

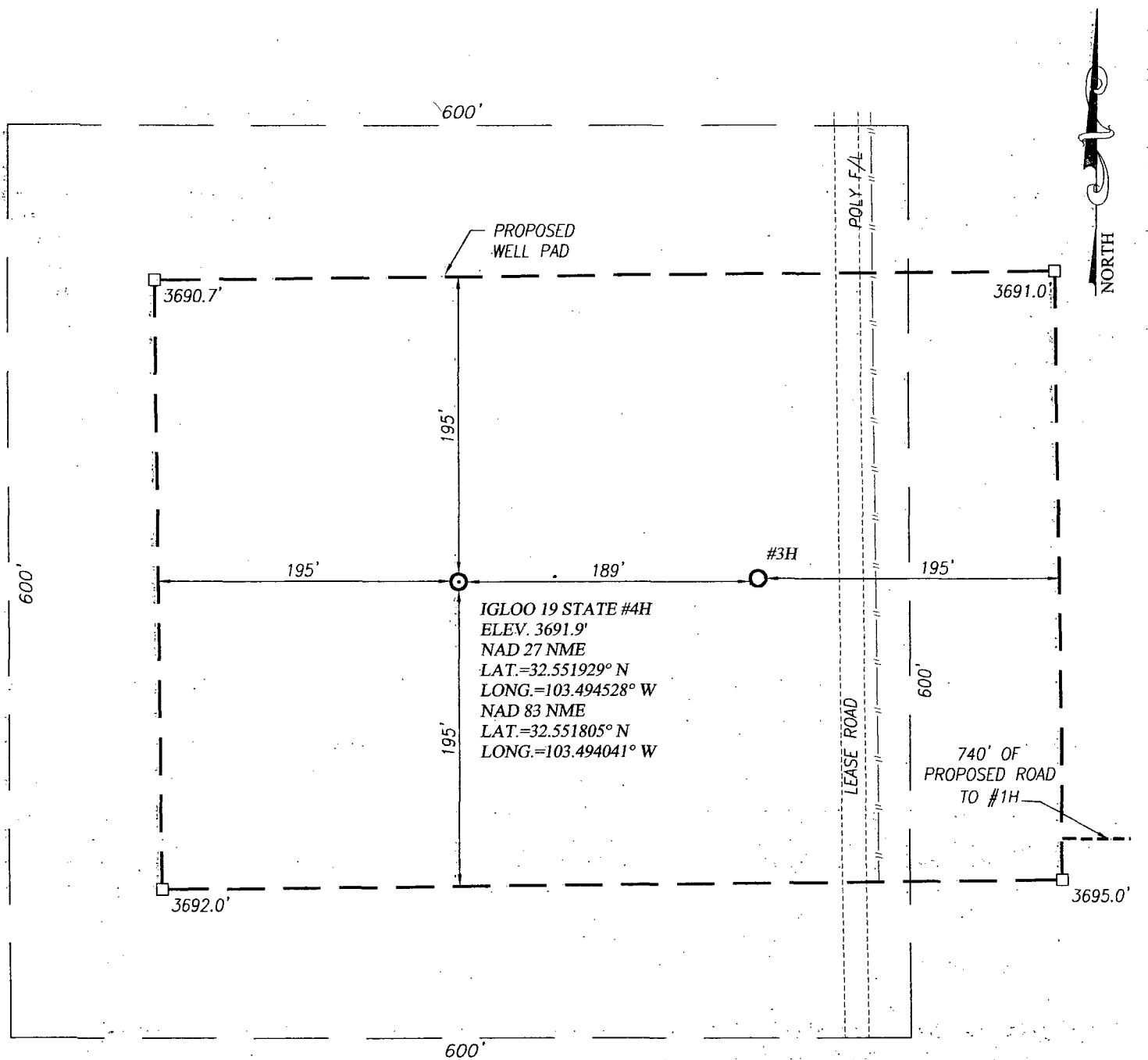
UL or lot No.	Section	Township	Range	Lot Idn	Feet from the	North/South line	Feet from the	East/West line	County
B	19	20-S	35-E		330	NORTH	2200	EAST	LEA

Dedicated Acres 160	Joint or Infill	Consolidation Code	Order No.
------------------------	-----------------	--------------------	-----------

NO ALLOWABLE WILL BE ASSIGNED TO THIS COMPLETION UNTIL ALL INTERESTS HAVE BEEN CONSOLIDATED OR A NON-STANDARD UNIT HAS BEEN APPROVED BY THE DIVISION

<p>1</p> <p>BOTTOM HOLE LOCATION</p> <p>NAD 27 NME</p> <p>Y= 570228.4 N</p> <p>X= 758375.0 E</p> <p>LAT.=32.564867° N</p> <p>LONG.=103.494682° W</p>	<p>BOTTOM HOLE LOCATION</p> <p>NAD 83 NME</p> <p>Y= 570290.9 N</p> <p>X= 799556.2 E</p> <p>LAT.=32.564991° N</p> <p>LONG.=103.495170° W</p>		<p>OPERATOR CERTIFICATION</p> <p>I hereby certify that the information herein is true and complete to the best of my knowledge and belief, and that this organization either owns a working interest or unleased mineral interest in the land including the proposed bottom hole location or has a right to drill this well at this location pursuant to a contract with an owner of such mineral or working interest, or to a voluntary pooling agreement or a compulsory pooling order heretofore entered by the division.</p> <p>Signature: <i>Joe T. Janica</i></p> <p>Date: 01/05/15</p> <p>Printed Name: Joe T. Janica</p> <p>E-mail Address: joejanica@valörnet.com</p>
<p>2</p> <p>CORNER COORDINATES TABLE</p> <p>NAD 27 NME</p> <p>A - Y= 570553.2 N, X= 757932.3 E</p> <p>B - Y= 570568.5 N, X= 759252.2 E</p> <p>C - Y= 565284.8 N, X= 759291.9 E</p> <p>D - Y= 565271.6 N, X= 757972.8 E</p>			<p>SURVEYOR CERTIFICATION</p> <p>I hereby certify that the well location shown on this plat was plotted from field notes of actual surveys made by me or under my supervision, and that the same is true and correct to the best of my belief.</p> <p>DECEMBER 1, 2014</p> <p>Date of Survey</p> <p>Signature & Seal of Professional Surveyor:</p> <p><i>Ronald J. Eidson</i></p> <p>Certificate Number: 3239</p> <p>Surveyor: Gary G. Eidson 12641</p> <p>Ronald J. Eidson 3239</p> <p>LSL</p> <p>AWSC W.O.: 14.11.1322</p>
<p>3</p> <p>CORNER COORDINATES TABLE</p> <p>NAD 83 NME</p> <p>A - Y= 570615.8 N, X= 799113.6 E</p> <p>B - Y= 570631.1 N, X= 800433.5 E</p> <p>C - Y= 565347.2 N, X= 800473.4 E</p> <p>D - Y= 565334.0 N, X= 799154.2 E</p>			
<p>4</p> <p>GEODETIC COORDINATES</p> <p>NAD 27 NME</p> <p>SURFACE LOCATION</p> <p>Y= 565477.9 N</p> <p>X= 758610.0 E</p> <p>LAT.=32.551805° N</p> <p>LONG.=103.494041° W</p>	<p>GEODETIC COORDINATES</p> <p>NAD 83 NME</p> <p>SURFACE LOCATION</p> <p>Y= 565540.3 N</p> <p>X= 799791.4 E</p> <p>LAT.=32.551929° N</p> <p>LONG.=103.494528° W</p>		

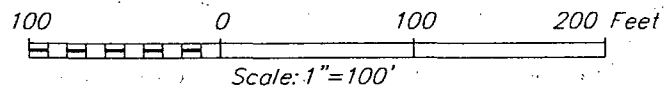
JAN 07 2015



NOTE:
1) SEE "LOCATION VERIFICATION MAP"
FOR PROPOSED ROAD LOCATION.

DIRECTIONS TO IGLOO 19 STATE #4H:

FROM THE INTERSECTION OF HWY 62-180 AND CO. RD. H27
(MARATHON ROAD) GO SOUTH ON CO. RD. H27 APPROX. 5.5
MILES TURN LEFT ON CALICHE LSE. ROAD AND GO EAST
APPROX. 1.7 MILES TURN RIGHT AND GO SOUTH APPROX 0.3
MILES TO THIS LOCATION.



CAZA OPERATING, LLC

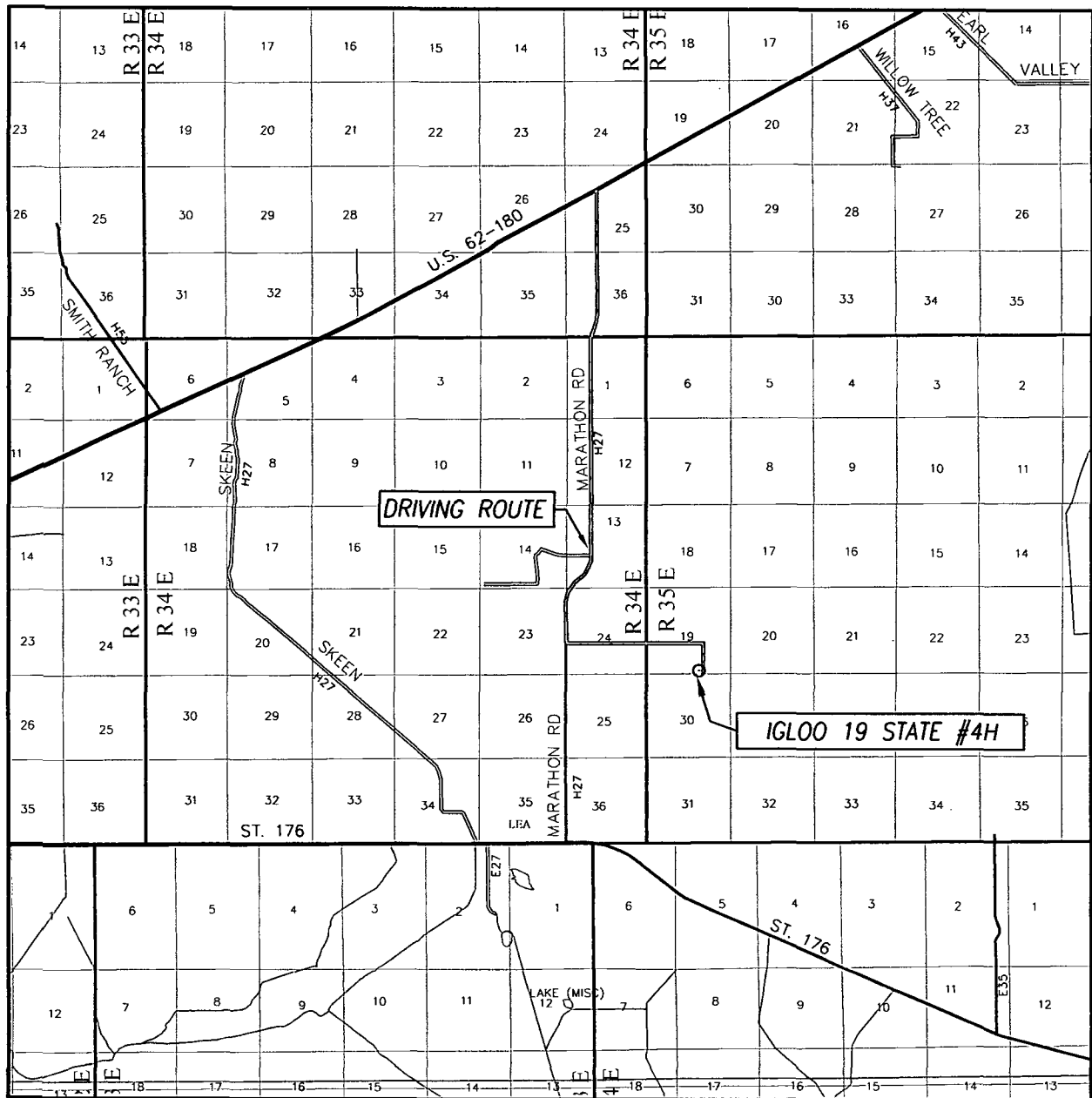
IGLOO 19 STATE #4H WELL
LOCATED 200 FEET FROM THE SOUTH LINE
AND 2000 FEET FROM THE EAST LINE OF SECTION 19,
TOWNSHIP 20 SOUTH, RANGE 35 EAST, N.M.P.M.,
LEA COUNTY, NEW MEXICO



PROVIDING SURVEYING SERVICES
SINCE 1946
JOHN WEST SURVEYING COMPANY
412 N. DAL PASO HOBBS, N.M. 88240
(575) 393-3117 www.jwsc.biz
TBPLS# 10021000

Survey Date: 12/1/14	CAD Date: 12/16/14	Drawn By: LSL
W.O. No.: 14111322	Rev: .	Rel. W.O.: .
		Sheet 1 of 1

VICINITY MAP



SCALE: 1" = 2 MILES

DRIVING ROUTE: SEE LOCATION VERIFICATION MAP

SEC. 19 TWP. 20-S RGE. 35-E

SURVEY N.M.P.M.

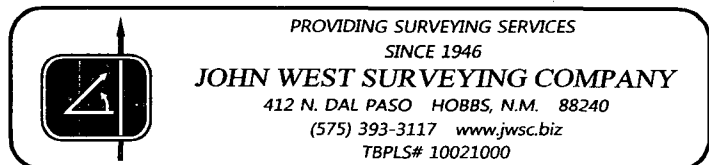
COUNTY LEA STATE NEW MEXICO

DESCRIPTION 200' FSL & 2000' FEL

ELEVATION 3692'

OPERATOR CAZA OPERATING, LLC

LEASE IGLOO 19 STATE



PROVIDING SURVEYING SERVICES
SINCE 1946

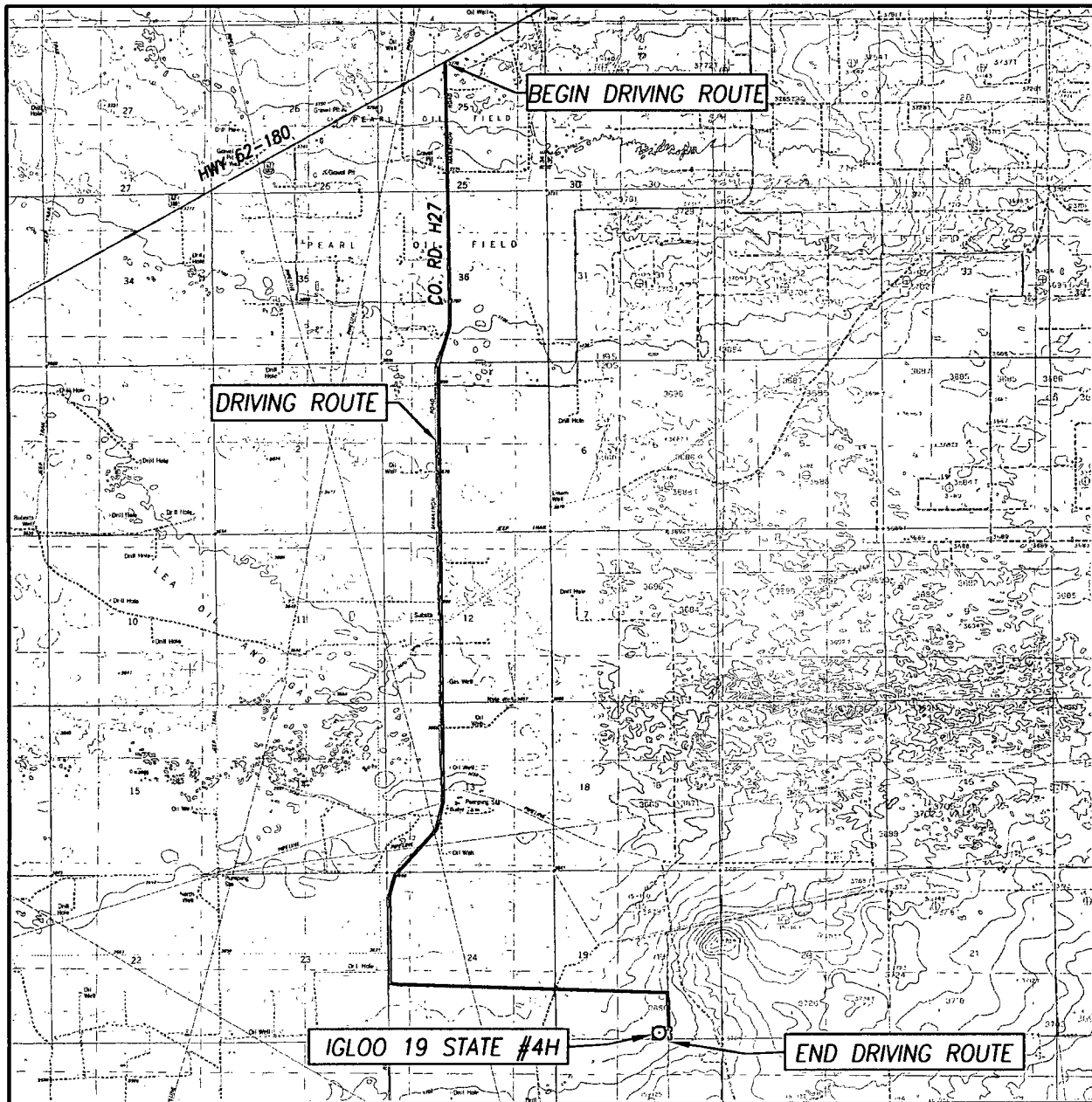
JOHN WEST SURVEYING COMPANY

412 N. DAL PASO HOBBS, N.M. 88240

(575) 393-3117 www.jwsc.biz

TBPLS# 10021000

LOCATION VERIFICATION MAP



SCALE: 1" = 5280'

CONTOUR INTERVAL:
MONUMENT SW, N.M. - 5'
LEA, N.M. - 10'

SEC. 19 TWP. 20-S RGE. 35-E

SURVEY N.M.P.M.

COUNTY LEA STATE NEW MEXICO

DESCRIPTION 200' FSL & 2000' FEL

ELEVATION 3692'


OPERATOR CAZA OPERATING, LLC

LEASE IGLOO 19 STATE

U.S.G.S. TOPOGRAPHIC MAP
MONUMENT SW, N.M.

DIRECTIONS TO IGLOO 19 STATE #4H:

FROM THE INTERSECTION OF HWY 62-180 AND CO. RD. H27
(MARATHON ROAD) GO SOUTH ON CO. RD. H27 APPROX. 5.5 MILES
TURN LEFT ON CALICHE LSE. ROAD AND GO EAST APPROX. 1.7 MILES
TURN RIGHT AND GO SOUTH APPROX 0.3 MILES TO THIS LOCATION.



PROVIDING SURVEYING SERVICES
SINCE 1946
JOHN WEST SURVEYING COMPANY
412 N. DAL PASO HOBBS, N.M. 88240
(575) 393-3117 www.jwsc.biz
TBPLS# 10021000