

DISTRICT I  
1625 N. French Dr., Hobbs, NM 88240  
Phone: (575) 393-6161 Fax: (575) 393-0720

DISTRICT II  
811 S. First St., Artesia, NM 88210  
Phone: (575) 748-1283 Fax: (575) 748-9720

DISTRICT III  
1000 Rio Brazos Road, Aztec, NM 87410  
Phone: (505) 334-6178 Fax: (505) 334-6170

DISTRICT IV  
1220 S. St. Francis Dr., Santa Fe, NM 87505  
Phone: (505) 476-3460 Fax: (505) 476-3462

State of New Mexico  
Energy, Minerals & Natural Resources Department  
OIL CONSERVATION DIVISION  
1220 South St. Francis Dr.  
Santa Fe, New Mexico 87505

Form C-102  
Revised August 1, 2011  
Submit one copy to appropriate  
District Office

AMENDED REPORT

WELL LOCATION AND ACREAGE DEDICATION PLAT

API Number 30-025- <b>42359</b>	Pool Code 337580	Pool Name LEA BONE SPRING, SOUTH
Property Code 313780	Property Name IGLOO 19 STATE	Well Number 5H
OGRID No. 249099	Operator Name CAZA OPERATING, LLC	Elevation 3689'

Surface Location

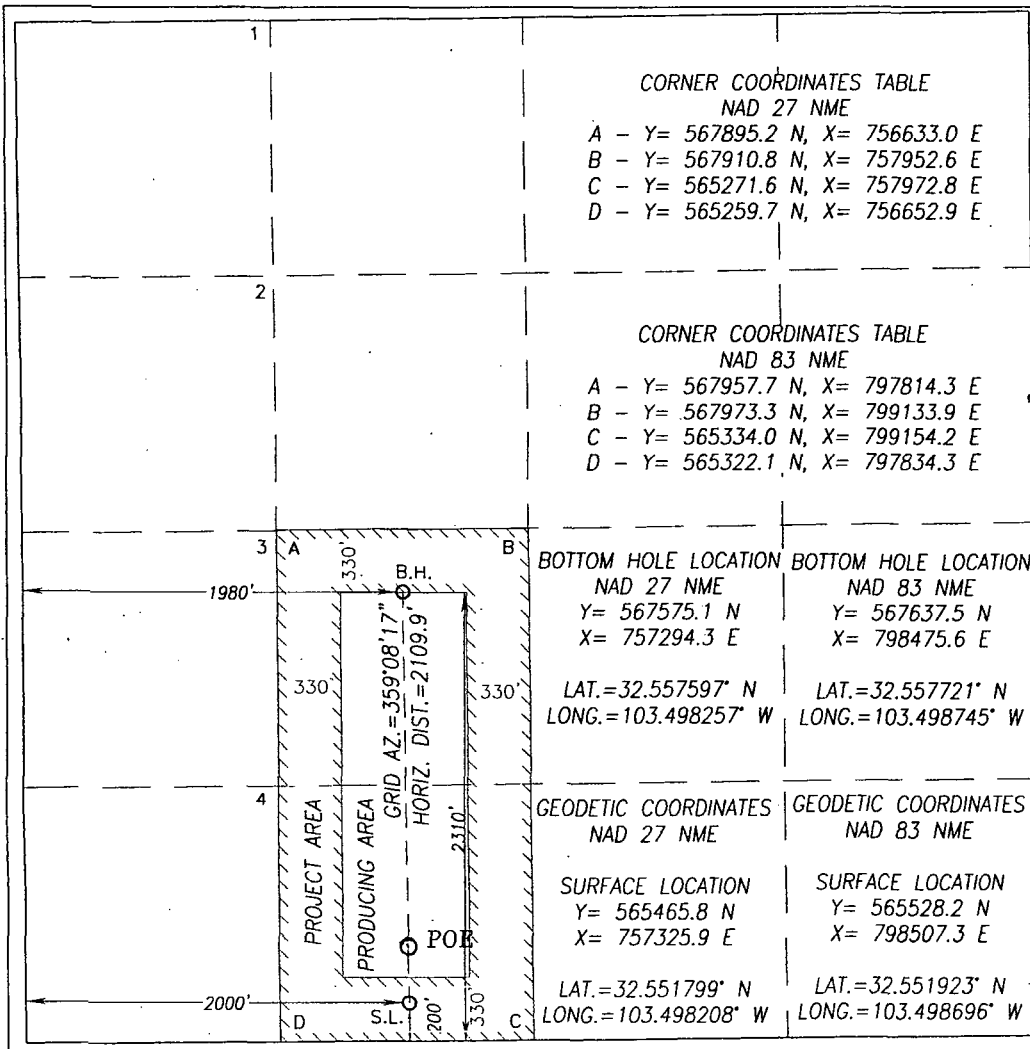
UL or lot No.	Section	Township	Range	Lot Idn	Feet from the	North/South line	Feet from the	East/West line	County
N	19	20-S	35-E		200	SOUTH	2000	WEST	LEA

Bottom Hole Location If Different From Surface

UL or lot No.	Section	Township	Range	Lot Idn	Feet from the	North/South line	Feet from the	East/West line	County
K	19	20-S	35-E		2310	SOUTH	1980	WEST	LEA

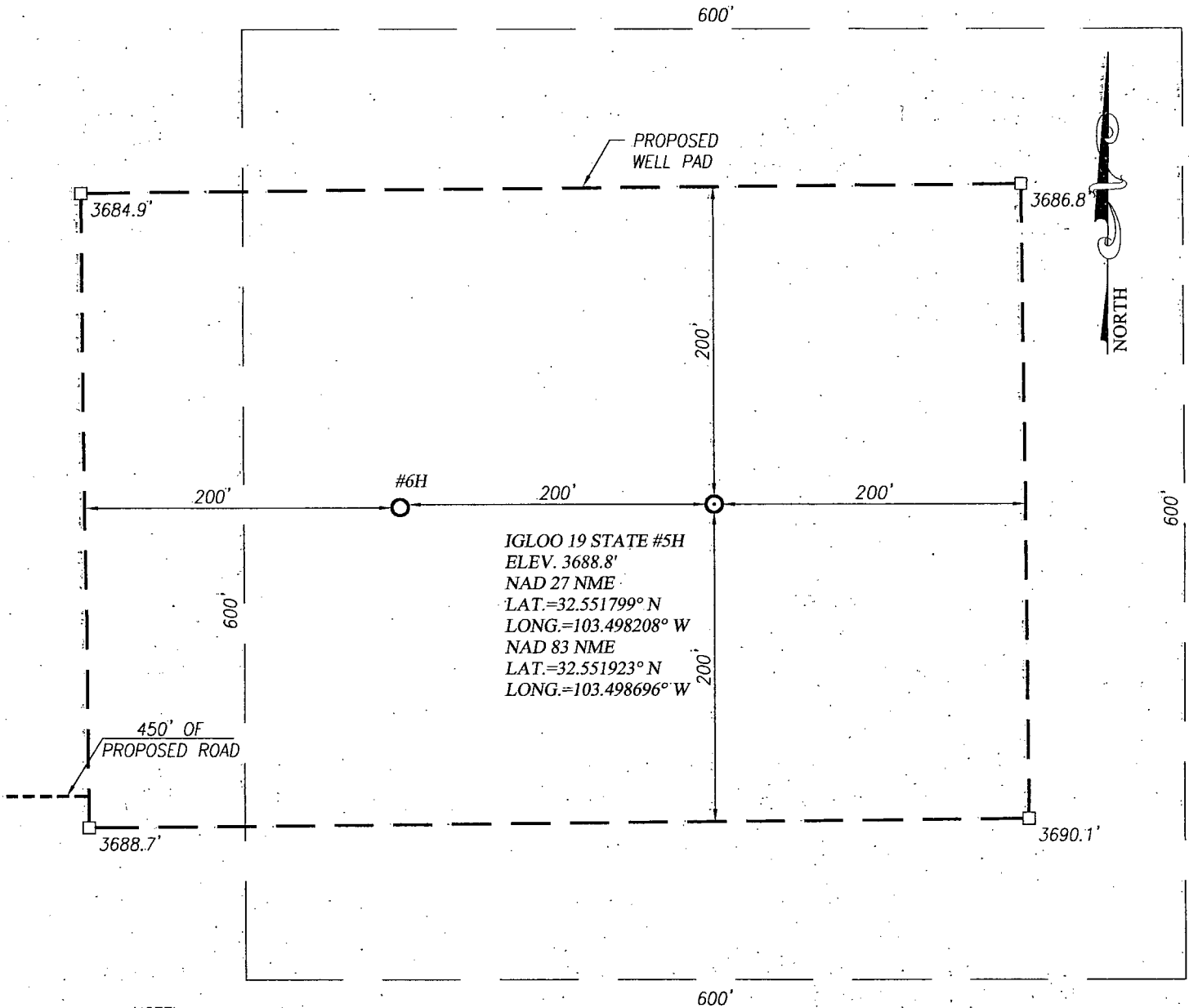
Dedicated Acres 80	Joint or Infill	Consolidation Code	Order No.
-----------------------	-----------------	--------------------	-----------

NO ALLOWABLE WILL BE ASSIGNED TO THIS COMPLETION UNTIL ALL INTERESTS HAVE BEEN CONSOLIDATED OR A NON-STANDARD UNIT HAS BEEN APPROVED BY THE DIVISION



<p><b>OPERATOR CERTIFICATION</b></p> <p>I hereby certify that the information herein is true and complete to the best of my knowledge and belief, and that this organization either owns a working interest or unleased mineral interest in the land including the proposed bottom hole location or has a right to drill this well at this location pursuant to a contract with an owner of such mineral or working interest, or to a voluntary pooling agreement or a compulsory pooling order heretofore entered by the division.</p> <p><i>Joe T. Janica</i> Signature Date <b>Joe T. Janica</b> 01/05/15 Printed Name joejanica@valornet.com E-mail Address</p>
<p><b>SURVEYOR CERTIFICATION</b></p> <p>I hereby certify that the well location shown on this plat was plotted from field notes of actual surveys made by me or under my supervision, and that the same is true and correct to the best of my belief.</p> <p>DECEMBER 1, 2014 Date of Survey Signature &amp; Seal of Professional Surveyor: <i>Ronald J. Eidson</i> Certificate Number 3239 Gary G. Eidson 12641 Ronald J. Eidson 3239 LSL JWSC W.O.: 14.11.1323</p>

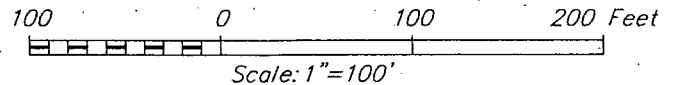
JAN 07 2015



NOTE:  
 1) SEE "LOCATION VERIFICATION MAP"  
 FOR PROPOSED ROAD LOCATION.

#### DIRECTIONS TO IGLOO 19 STATE #5H:

FROM THE INTERSECTION OF HWY 62-180 AND CO. RD. H27  
 (MARATHON ROAD) GO SOUTH ON CO. RD. H27 APPROX. 5.5  
 MILES TURN LEFT ON CALICHE LSE. ROAD AND GO EAST  
 APPROX. 1.1 MILES TURN RIGHT AND GO SOUTH APPROX 0.3  
 MILES FOLLOW PROP. PAD & ROAD SURVEY STAKES 0.2 MILES  
 EAST TO THIS LOCATION.



## CAZA OPERATING, LLC

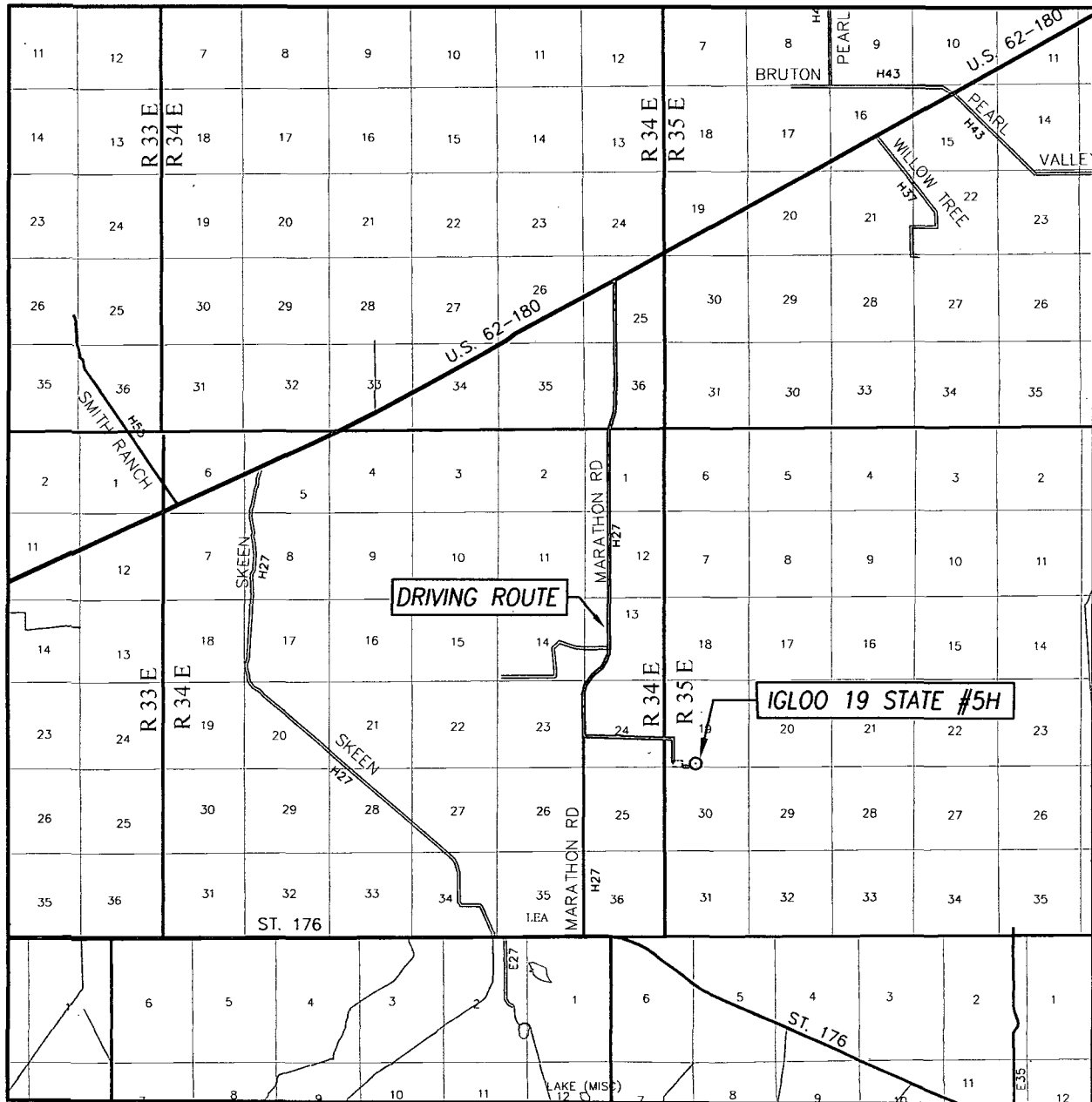
IGLOO 19 STATE #5H WELL  
 LOCATED 200 FEET FROM THE SOUTH LINE  
 AND 2000 FEET FROM THE WEST LINE OF SECTION 19,  
 TOWNSHIP 20 SOUTH, RANGE 35 EAST, N.M.P.M.,  
 LEA COUNTY, NEW MEXICO



PROVIDING SURVEYING SERVICES  
 SINCE 1946  
**JOHN WEST SURVEYING COMPANY**  
 412 N. DAL PASO HOBBS, N.M. 88240  
 (575) 393-3117 www.jwsc.biz  
 TBPLS# 10021000

Survey Date: 12/1/14	CAD Date: 12/15/14	Drawn By: LSL
W.O. No.: 14111323	Rev: .	Rel. W.O.: Sheet 1 of 1

# VICINITY MAP



SCALE: 1" = 2 MILES  
DRIVING ROUTE: SEE LOCATION VERIFICATION MAP

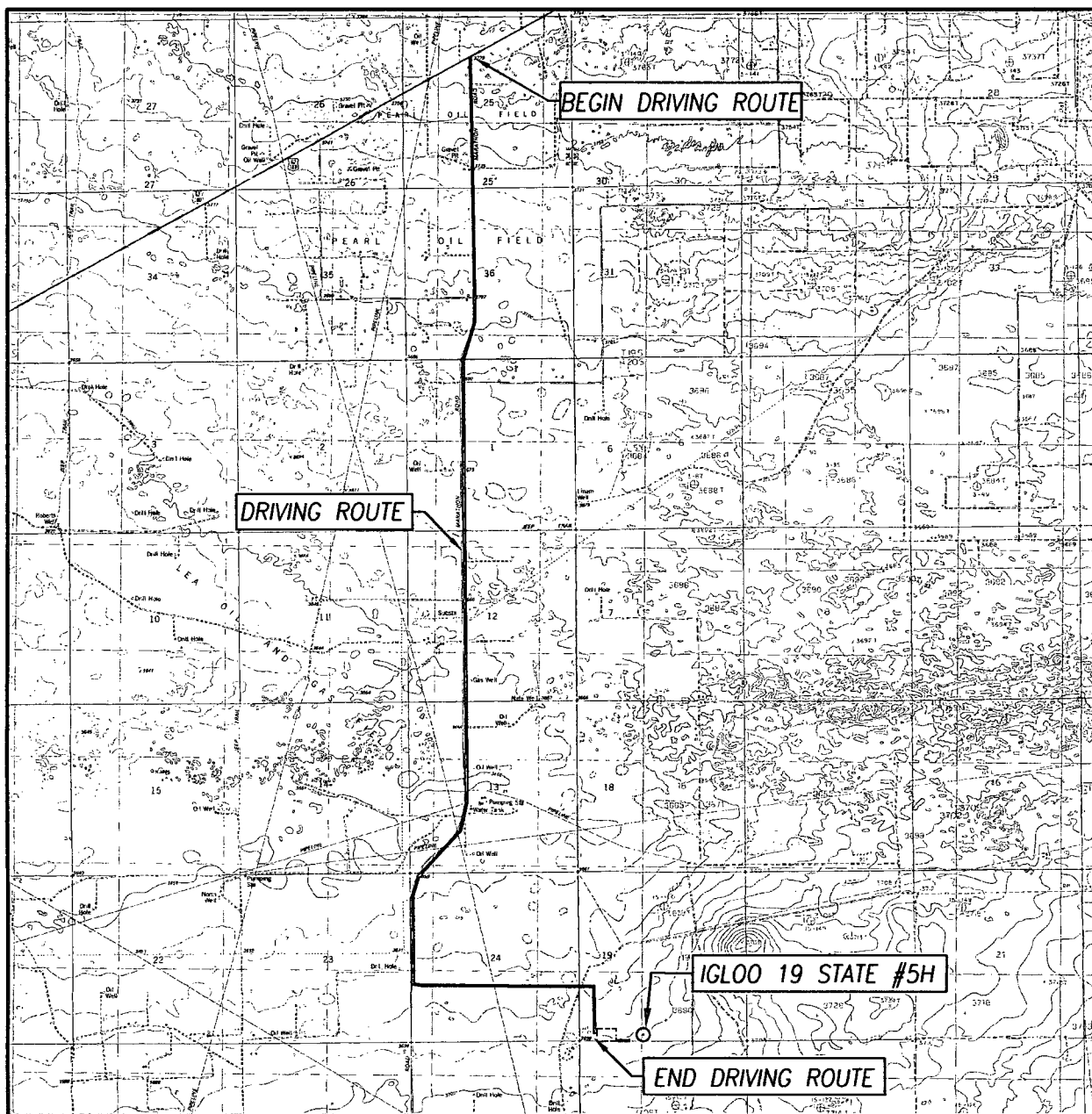
SEC. 19 TWP. 20-S RGE. 35-E  
SURVEY N.M.P.M.  
COUNTY LEA STATE NEW MEXICO  
DESCRIPTION 200' FSL & 2000' FWL  
ELEVATION 3689'  
OPERATOR CAZA OPERATING, LLC  
LEASE IGLOO 19 STATE

PROVIDING SURVEYING SERVICES  
SINCE 1946

**JOHN WEST SURVEYING COMPANY**

412 N. DAL PASO HOBBS, N.M. 88240  
(575) 393-3117 [www.jwsc.biz](http://www.jwsc.biz)  
TBPLS# 10021000

# LOCATION VERIFICATION MAP



SCALE: 1" = 5280'

CONTOUR INTERVAL:  
MONUMENT SW, N.M. - 5'  
LEA, N.M. - 10'

SEC. 19 TWP. 20-S RGE. 35-E

SURVEY N.M.P.M.

COUNTY LEA STATE NEW MEXICO

DESCRIPTION 200' FSL & 2000' FWL

ELEVATION 3689'

OPERATOR CAZA OPERATING, LLC

LEASE IGLOO 19 STATE

U.S.G.S. TOPOGRAPHIC MAP  
MONUMENT SW, N.M.

DIRECTIONS TO IGLOO 19 STATE #5H:

FROM THE INTERSECTION OF HWY 62-180 AND CO. RD. H27  
(MARATHON ROAD) GO SOUTH ON CO. RD. H27 APPROX. 5.5 MILES  
TURN LEFT ON CALICHE LSE. ROAD AND GO EAST APPROX. 1.1 MILES  
TURN RIGHT AND GO SOUTH APPROX 0.3 MILES FOLLOW PROP. PAD  
& ROAD SURVEY STAKES 0.2 MILES EAST TO THIS LOCATION.



PROVIDING SURVEYING SERVICES  
SINCE 1946  
**JOHN WEST SURVEYING COMPANY**  
412 N. DAL PASO HOBBS, N.M. 88240  
(575) 393-3117 [www.jwsc.biz](http://www.jwsc.biz)  
TBPLS# 10021000