

District I  
1625 N. French Dr., Hobbs, NM 88240  
Phone: (575) 393-6161 Fax: (575) 393-0720  
District II  
811 S. First St., Artesia, NM 88210  
Phone: (575) 748-1283 Fax: (575) 748-9720  
District III  
1000 Rio Brazos Road, Aztec, NM 87410  
Phone: (505) 334-6178 Fax: (505) 334-6170  
District IV  
1220 S. St. Francis Dr., Santa Fe, NM 87505  
Phone: (505) 476-3460 Fax: (505) 476-3462

State of New Mexico  
Energy, Minerals & Natural Resources Department  
OIL CONSERVATION DIVISION  
1220 South St. Francis Dr.  
Santa Fe, NM 87505

Form C-102  
Revised August 1, 2011  
Submit one copy to appropriate  
District Office

JAN 07 2015

☐ AMENDED REPORT

RECEIVED

WELL LOCATION AND ACREAGE DEDICATION PLAT

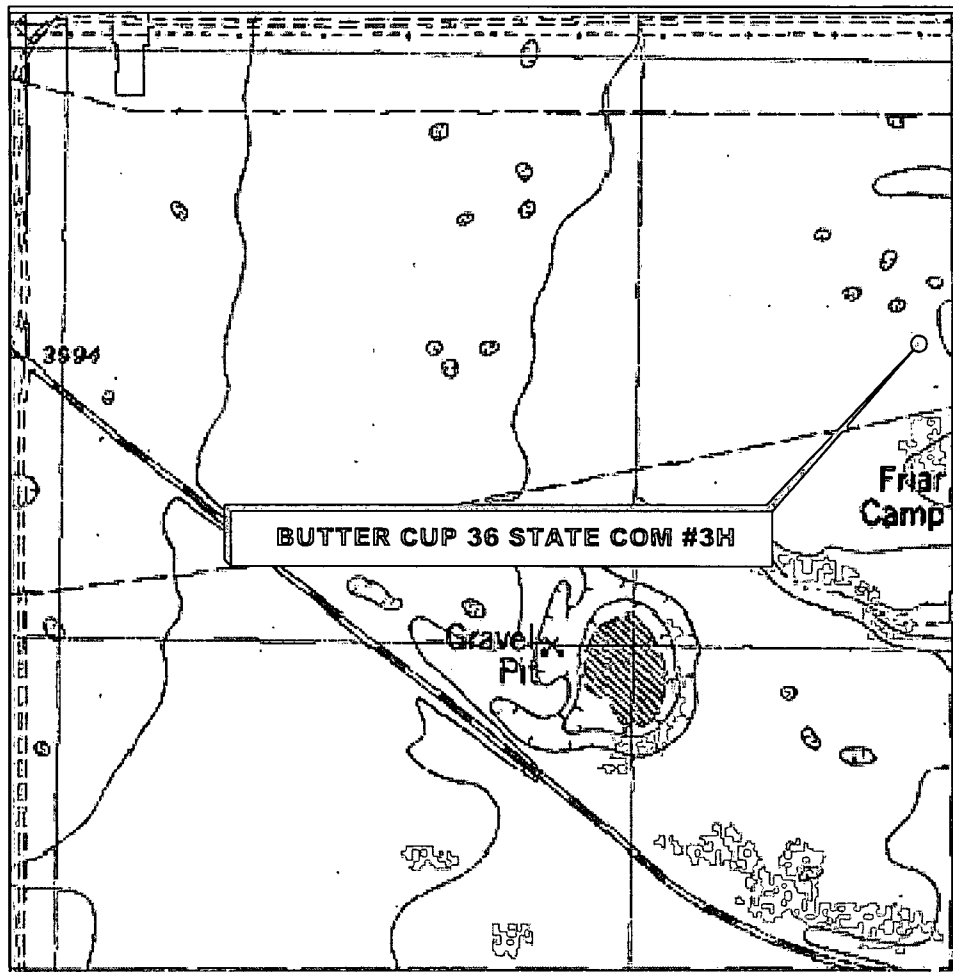
1 API Number <b>30-029 42367</b>		2 Pool Code <b>960</b>		3 Pool Name <b>AIRSTRIP; BONE SPRING</b>	
4 Property Code 39295		5 Property Name <b>BUTTER CUP 36 STATE COM</b>			
6 Well Number <b>3H</b>		7 OGRID NO. 6137			
8 Operator Name <b>DEVON ENERGY PRODUCTION COMPANY, LP</b>		9 Elevation <b>3972'</b>			
10 Surface Location					
UL or lot no. <b>H</b>	Section <b>35</b>	Township <b>18S</b>	Range <b>34E</b>	Lot Idn	Feet from the <b>1855</b>
North/South line <b>NORTH</b>		Feet From the <b>210</b>		East/West line <b>EAST</b>	
County <b>LEA</b>					
11 Bottom Hole Location If Different From Surface					
UL or lot no. <b>H</b>	Section <b>36</b>	Township <b>18S</b>	Range <b>34E</b>	Lot Idn	Feet from the <b>1855</b>
North/South line <b>NORTH</b>		Feet from the <b>330</b>		East/West line <b>EAST</b>	
County <b>LEA</b>					
12 Dedicated Acres <b>160</b>		13 Joint or Infill		14 Consolidation Code	
15 Order No.					

No allowable will be assigned to this completion until all interest have been consolidated or a non-standard unit has been approved by the division.

		<p>17 OPERATOR CERTIFICATION</p> <p>I hereby certify that the information contained herein is true and complete to the best of my knowledge and belief, and that this organization either owns a working interest or unleased mineral interest in the land including the proposed bottom hole location or has a right to drill this well at this location pursuant to a contract with an owner of such a mineral or working interest, or to a voluntary pooling agreement or a compulsory pooling order heretofore entered by the division.</p> <p>Signature: <i>Tami Laird</i> Date: 1/5/15 Printed Name: Tami Laird, Regulatory Analyst E-mail Address: tami.laird@dmn.com</p>
<p>18 SURVEYOR CERTIFICATION</p> <p>I hereby certify that the well location shown on this plat was plotted from field notes of actual surveys made by me or under my supervision, and that the same is true and correct to the best of my belief.</p> <p>11-17-2014 Date of Survey Signature and Seal of Professional Surveyor 20451 Certificate Number</p>		<p>11-17-2014 Date of Survey Signature and Seal of Professional Surveyor 20451 Certificate Number</p>

JAN 21 2015

# LOCATION VERIFICATION MAP



SECTION 35, TWP. 18 SOUTH, RGE. 34 EAST,  
N. M. P. M., LEA CO., NEW MEXICO

OPERATOR: Devon Energy Production  
Company, L. P.

LEASE: Butter Cup 36 State Com

WELL NO.: 3H

ELEVATION: 3972'

LOCATION: 1855' FNL & 210' FEL

CONTOUR INTERVAL: 10'

USGS TOPO. SOURCE MAP:  
Ironhouse Well, NM (P. E. 1984)

Firm No.: TX 10193838 NM 4655451

Copyright 2014 - All Rights Reserved

1	By REB	12/2
NO.	REVISION	DATE
JOB NO.: LS140502		
DWG. NO.: 140502LVM		

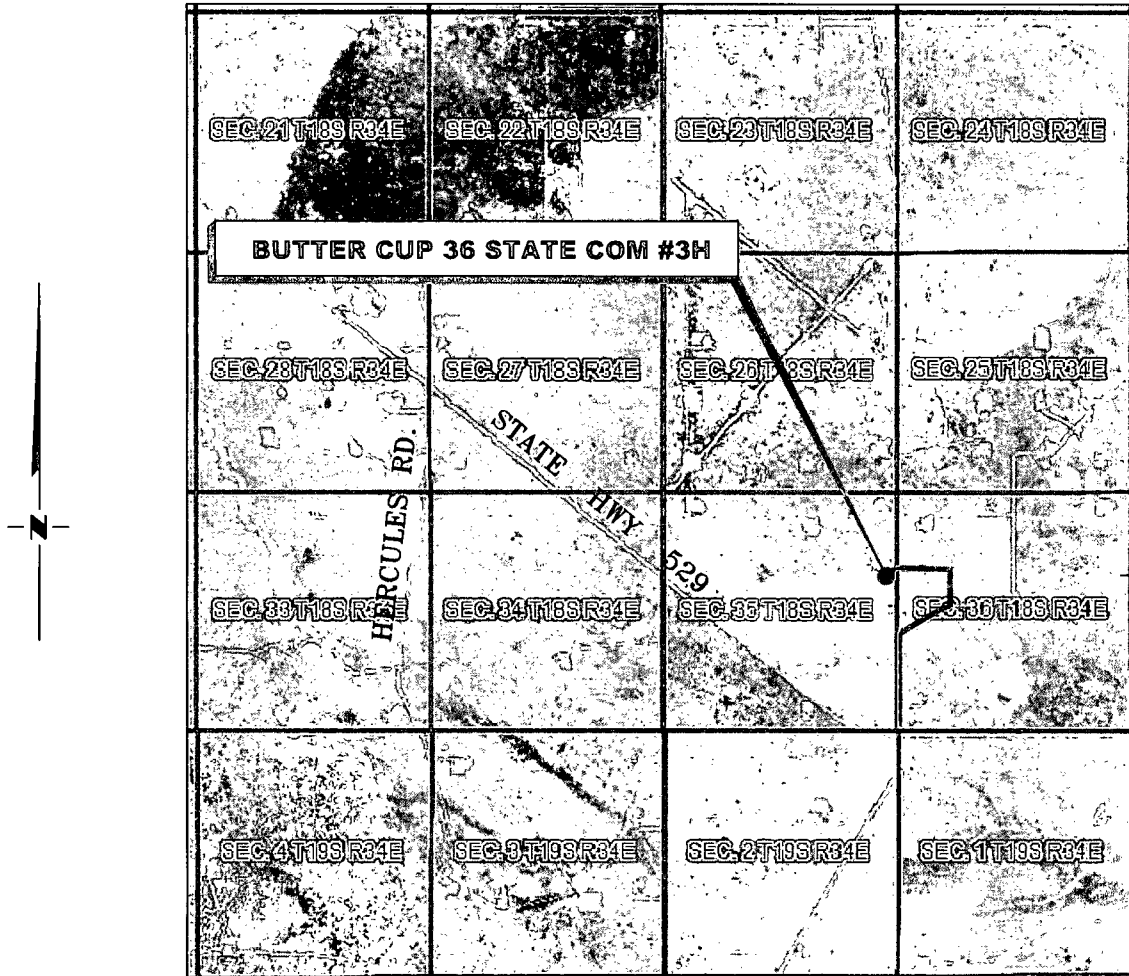
## RRC

308 W. BROADWAY ST., HOBBS, NM 88240 (575) 964-8200

SCALE: 1"=1000'
DATE: 11-17-2014
SURVEYED BY: GB/IE
DRAWN BY: LNY
APPROVED BY: REB
SHEET : 1 OF 4

# VICINITY MAP

NOT TO SCALE



*SECTION 35, TWP. 18 SOUTH, RGE. 34 EAST,  
N. M. P. M., LEA CO., NEW MEXICO*

OPERATOR: Devon Energy Production  
Company, LP

LOCATION: 1855' FNL & 210' FEL  
ELEVATION: 3972'

LEASE: Butter Cup 36 State Com  
WELL NO.: 3H

Firm No.: TX 10193838 NM 4655451

Copyright 2014 - All Rights Reserved

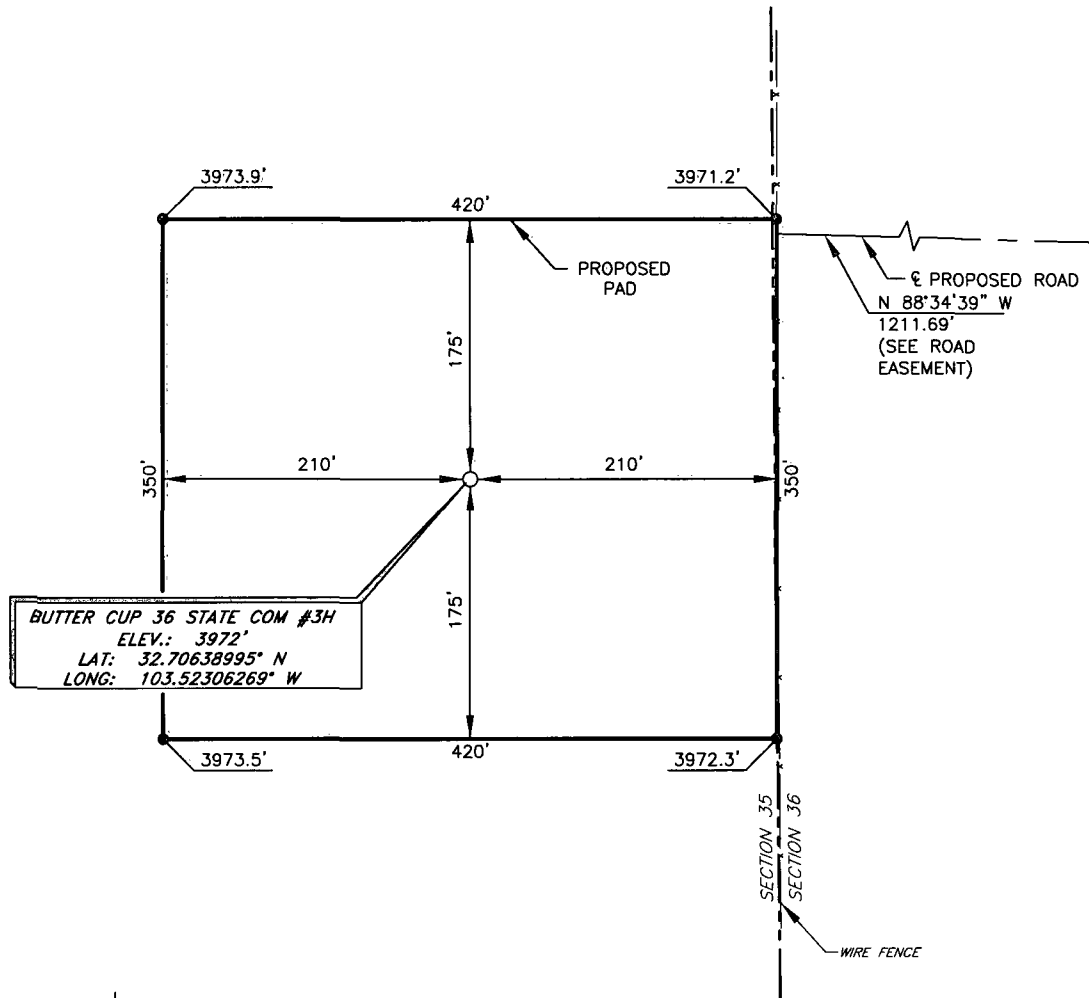
1	By REB	12/2
NO.	REVISION	DATE
JOB NO.: LS140502		
DWG. NO.: 140502VM		

# RRC

308 W. BROADWAY ST., HOBBS, NM 88240 (575) 964-8200

SCALE: NTS
DATE: 11/17/2014
SURVEYED BY: GB/IE
DRAWN BY: LNY
APPROVED BY: REB
SHEET : 2 OF 4

DEVON ENERGY PRODUCTION COMPANY, LP  
 BUTTER CUP 36 STATE COM #3H  
 (1855' FNL & 210' FEL)  
 SECTION 35, T18S, R34E  
 N. M. P. M., LEA CO., NEW MEXICO



DIRECTIONS TO LOCATION

From the intersection of State HWY 529 and Hercules Rd.;  
 Go Southeast on State HWY 529 approx. 2.4 miles to a lease road;  
 Turn left on the lease road and go North approx. 0.4 miles;  
 Turn right and go Northeast approx. 0.25 miles;  
 Turn left and go North approx. 0.15 miles to the proposed road;  
 Follow the proposed road survey West approx. 1426 feet to this location.

SCALE: 1" = 100'  
 0 50 100  
 BEARINGS ARE  
 NAD 83 GRID - NM EAST  
 DISTANCES ARE  
 GROUND.

Firm No.: TX 10193838 NM 4655451

Copyright 2014 - All Rights Reserved

1	By REB	12/2
NO.	REVISION	DATE
JOB NO.:	LS140502	
DWG. NO.:	140502PAD	

**RRC**

308 W. BROADWAY ST., HOBBS, NM 88240 (575) 964-8200

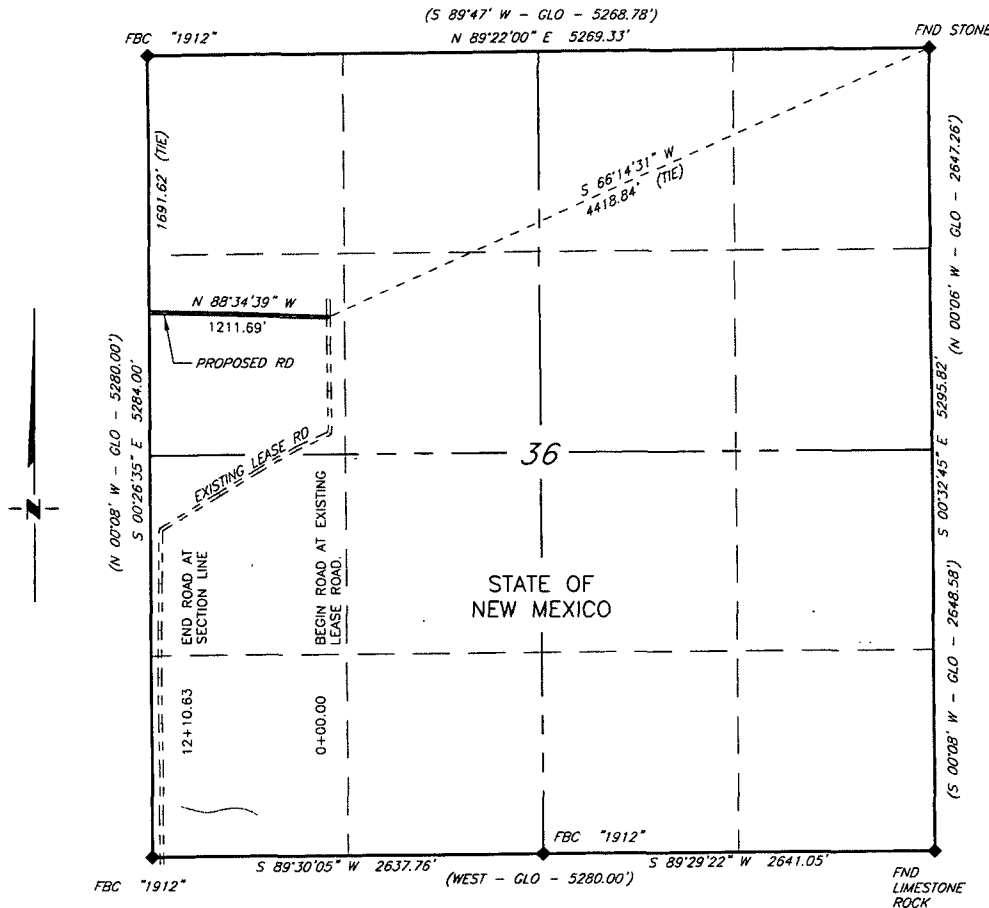
SCALE: 1" = 100'
DATE: 11-17-2014
SURVEYED BY: GB/IE
DRAWN BY: LNY
APPROVED BY: REB
SHEET : 3 of 4

DEVON ENERGY PRODUCTION COMPANY, LP  
 PROPOSED ACCESS ROAD FOR THE  
 BUTTER CUP 36 STATE COM #3H  
 SECTION 36, T18S, R34E  
 N. M. P. M., LEA CO., NEW MEXICO

HOBBSOCD

JAN 07 2015

RECEIVED



DESCRIPTION

A strip of land 20 feet wide, being 1,211.69 feet or 73.436 rods in length lying in Section 36, Township 18 South, Range 34 East, N. M. P. M., Lea County, New Mexico, being 10 feet left and 10 feet right of the following described survey of a centerline across State of New Mexico Land;

BEGINNING at Engr. Sta. 0+00, a point in the Northwest quarter of Section 36 which bears S 66°14'31\" W, 4,418.84 feet from a stone, found for the Northeast corner of Section 36;

Thence N 88°34'39\" W, 1,211.69 feet to Engr. Sta. 12+11.69, the End of Survey, a point on the West line of Section 36 which bears S 00°26'35\" E, 1,691.62 feet from a brass cap, stamped \"1912\", found for the Northwest corner of Section 36.

Said strip of land contains 0.834 acres, more or less, and is allocated by forties as follows:

SW 1/4 NW 1/4      73.436 Rods      0.556 Ac.

SCALE: 1\" = 1000'  
 0      500      1000

BEARINGS ARE GRID NAD 83  
 NM EAST  
 DISTANCES ARE HORIZ. GROUND.

LEGEND

( )      RECORD DATA - GLO  
 ♦      FOUND MONUMENT  
       AS NOTED  
 ——— PROPOSED ROAD

I, Richard E Brooks, a New Mexico Professional Surveyor, do hereby certify that the plat shown hereon accurately depicts the conditions on the ground at the time of the survey; that all work was done under my direct supervision and meets the State of New Mexico minimum standards for land surveying to the best of my knowledge.

*Richard E Brooks*  
 Richard E Brooks      NM PS 20451



Firm No.: TX 10193838 NM 4655451

Copyright 2014 - All Rights Reserved

1	By REB	12/2
NO.	REVISION	DATE
JOB NO.:	LS140502	
DWG. NO.:	140502_RD	

RRC

308 W. BROADWAY ST., HOBBS, NM 88240 (575) 964-8200

SCALE: 1\" = 1000'  
 DATE: 11-17-2014  
 SURVEYED BY: GB/IE  
 DRAWN BY: LNY  
 APPROVED BY: REB  
 SHEET : 4 of 4