

DISTRICT I
1625 N. French Dr., Hobbs, NM 88240
Phone: (575) 393-6161 Fax: (575) 393-0720

DISTRICT II
811 S. First St., Artesia, NM 88210
Phone: (575) 748-1283 Fax: (575) 748-9720

DISTRICT III
1000 Rio Brazos Road, Aztec, NM 87410
Phone: (505) 334-6178 Fax: (505) 334-6170

DISTRICT IV
1220 S. St. Francis Dr., Santa Fe, NM 87505
Phone: (505) 476-3460 Fax: (505) 476-3462

State of New Mexico
Energy, Minerals & Natural Resources Department
OIL CONSERVATION DIVISION
1220 South St. Francis Dr.
Santa Fe, New Mexico 87505

Form C-102
Revised August 1, 2011
Submit one copy to appropriate
District Office

□ AMENDED REPORT

WELL LOCATION AND ACREAGE DEDICATION PLAT

API Number 30-025- 42380	Pool Code 37580	Pool Name LEA-BONE SPRING, SOUTH
Property Code 313780)	Property Name IGLOO 19 STATE	Well Number 8H
OGRID No. 249099	Operator Name CAZA OPERATING, LLC	Elevation 3687'

Surface Location

UL or lot No.	Section	Township	Range	Lot Idn	Feet from the	North/South line	Feet from the	East/West line	County
3	19	20-S	35-E		200	SOUTH	950	WEST	LEA

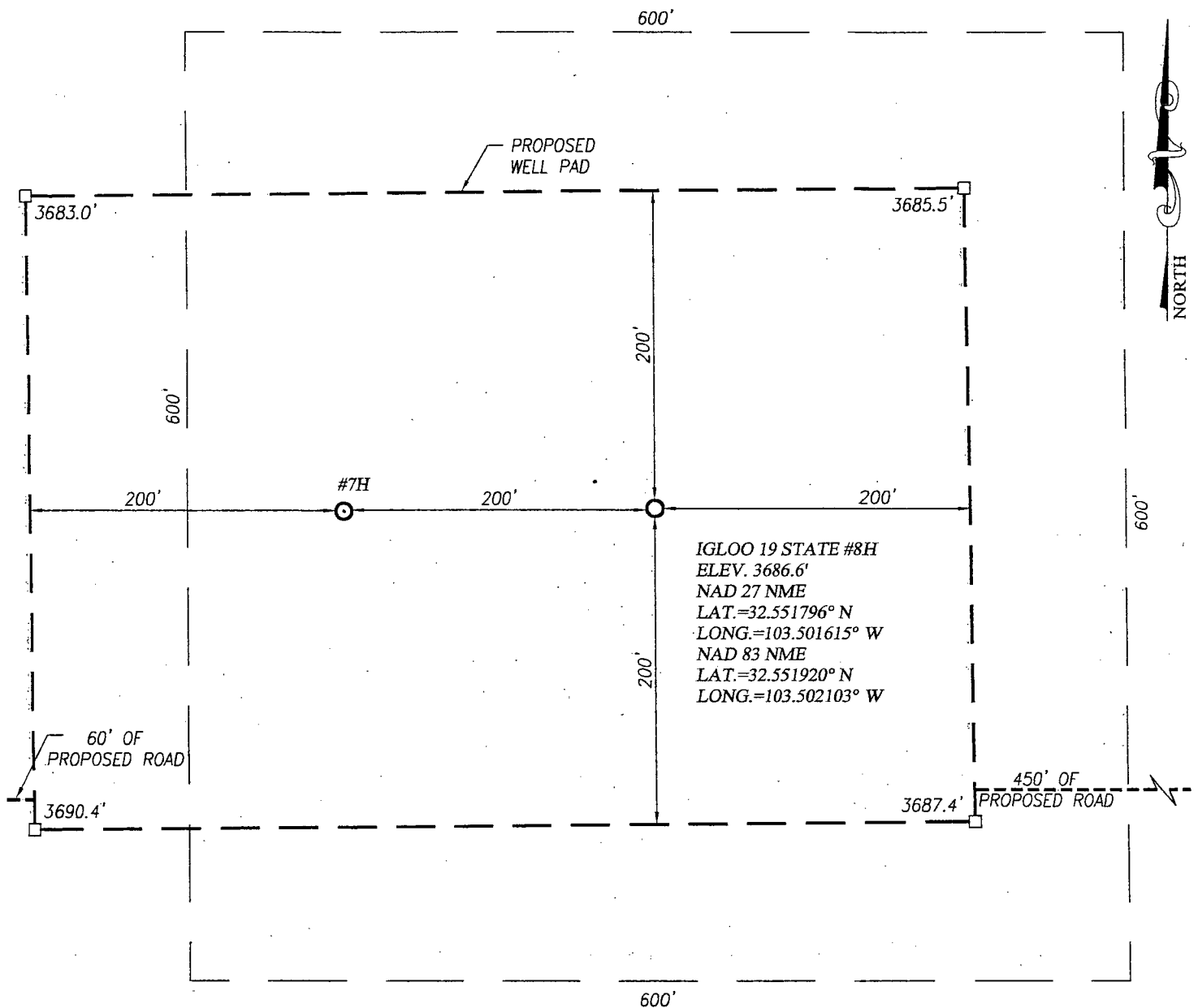
Bottom Hole Location If Different From Surface

UL or lot No.	Section	Township	Range	Lot Idn	Feet from the	North/South line	Feet from the	East/West line	County
4	19	20-S	35-E		2310	SOUTH	660	WEST	LEA
Dedicated Acres 80	Joint or Infill	Consolidation Code	Order No.						

NO ALLOWABLE WILL BE ASSIGNED TO THIS COMPLETION UNTIL ALL INTERESTS HAVE BEEN CONSOLIDATED OR A NON-STANDARD UNIT HAS BEEN APPROVED BY THE DIVISION

	<p>CORNER COORDINATES TABLE NAD 27 NME</p> <p>A - Y= 567879.7 N, X= 755313.0 E B - Y= 567895.2 N, X= 756633.0 E C - Y= 565259.7 N, X= 756652.9 E D - Y= 565247.8 N, X= 755327.4 E</p>		<p>OPERATOR CERTIFICATION</p> <p>I hereby certify that the information herein is true and complete to the best of my knowledge and belief, and that this organization either owns a working interest or unleased mineral interest in the land including the proposed bottom hole location or has a right to drill this well at this location pursuant to a contract with an owner of such mineral or working interest, or to a voluntary pooling agreement or a compulsory pooling order heretofore entered by the division.</p> <p><i>Joe T. Janica</i> Signature Date Joe T. Janica 01/21/15 Printed Name joejanica@valornet.com E-mail Address</p>	
	<p>CORNER COORDINATES TABLE NAD 83 NME</p> <p>A - Y= 567942.2 N, X= 796494.3 E B - Y= 567957.7 N, X= 797814.3 E C - Y= 565322.1 N, X= 797834.3 E D - Y= 565310.2 N, X= 796508.8 E</p>			
	<p>BOTTOM HOLE LOCATION NAD 27 NME Y= 567563.2 N X= 755974.6 E LAT.=32.557593° N LONG.=103.502540° W</p>			<p>BOTTOM HOLE LOCATION NAD 83 NME Y= 567625.7 N X= 797155.9 E LAT.=32.557717° N LONG.=103.503028° W</p>
	<p>GEODETIC COORDINATES NAD 27 NME SURFACE LOCATION Y= 565456.3 N X= 756276.1 E LAT.=32.551796° N LONG.=103.501615° W</p>			<p>GEODETIC COORDINATES NAD 83 NME SURFACE LOCATION Y= 565518.7 N X= 797457.5 E LAT.=32.551920° N LONG.=103.502103° W</p>
<p>SURVEYOR CERTIFICATION</p> <p>I hereby certify that the well location shown on this plat was plotted from field notes of actual surveys made by me or under my supervision, and that the same is true and correct to the best of my belief.</p> <p>DECEMBER 1, 2014</p> <p>Date of Survey Signature & Seal of Professional Surveyor: </p> <p>Certificate Number: Gary G. Eidson 12641 Ronald J. Eidson 3239 JWSC W.O.: 14.11.1326</p>				

JAN 26 2015

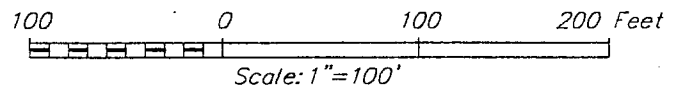


NOTE:

1) SEE "LOCATION VERIFICATION MAP"
 FOR PROPOSED ROAD LOCATION.

DIRECTIONS TO IGLOO 19 STATE #8H:

FROM THE INTERSECTION OF HWY 62-180 AND CO. RD. H27
 (MARATHON ROAD) GO SOUTH ON CO. RD. H27 APPROX. 5.5
 MILES TURN LEFT ON CALICHE LSE. ROAD AND GO EAST
 APPROX. 1.1 MILES TURN RIGHT AND GO SOUTH APPROX 0.3
 MILES THE LOCATION STAKE IS 260' EAST.



CAZA OPERATING, LLC

IGLOO 19 STATE #8H WELL
 LOCATED 200 FEET FROM THE SOUTH LINE
 AND 750 FEET FROM THE WEST LINE OF SECTION 19,
 TOWNSHIP 20 SOUTH, RANGE 35 EAST, N.M.P.M.,
 LEA COUNTY, NEW MEXICO

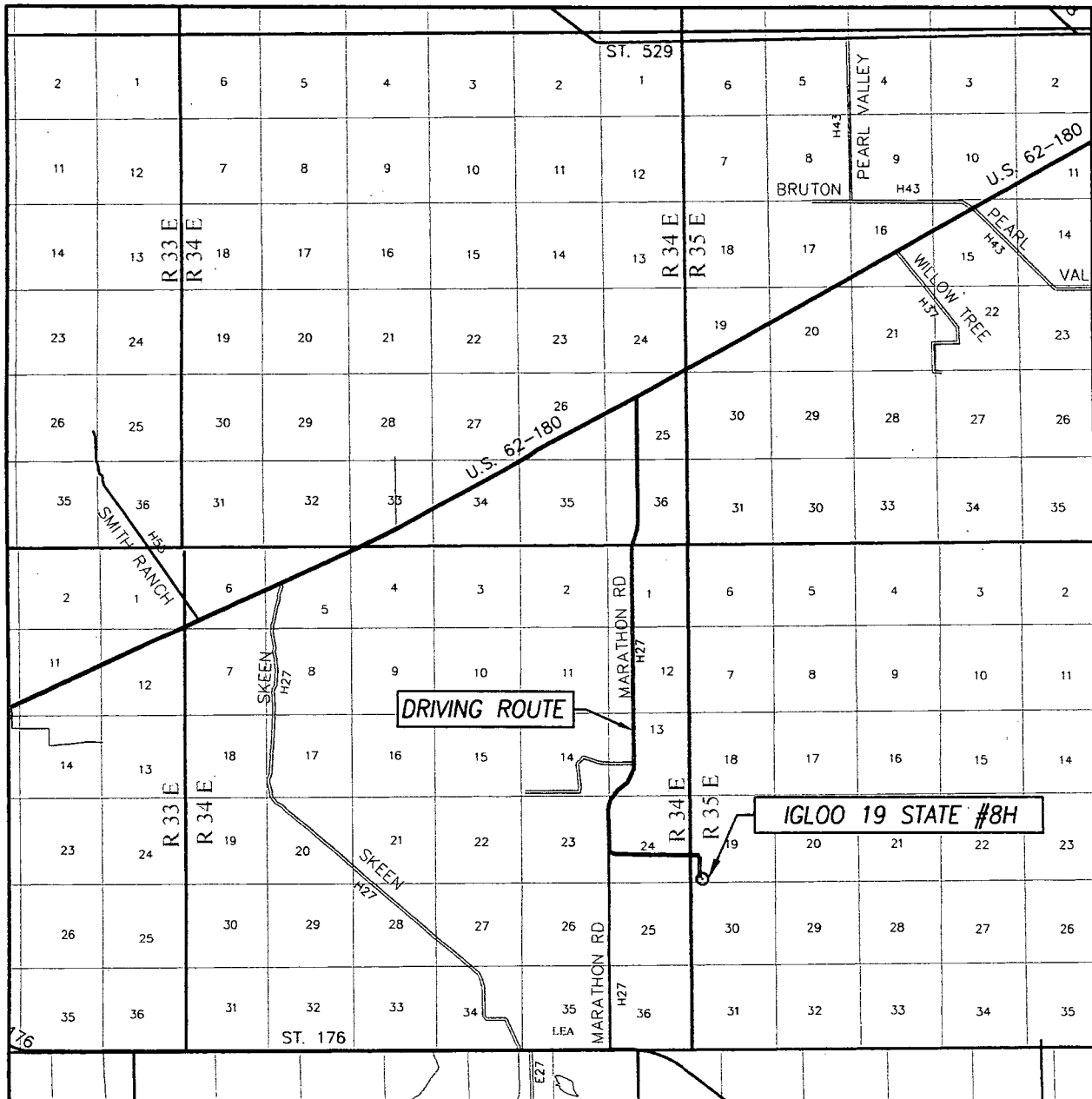


PROVIDING SURVEYING SERVICES
 SINCE 1946
JOHN WEST SURVEYING COMPANY
 412 N. DAL PASO HOBBS, N.M. 88240
 (575) 393-3117 www.jwsc.biz
 TBPLS# 10021000

Survey Date: 12/1/14	CAD Date: 12/17/14	Drawn By: LSL
W.O. No.: 14111326	Rev.:	Rel. W.O.:

Sheet 1 of 1

VICINITY MAP



SCALE: 1" = 2 MILES

DRIVING ROUTE: SEE LOCATION VERIFICATION MAP

SEC. 19 TWP. 20-S RGE. 35-E

SURVEY N.M.P.M.


COUNTY LEA STATE NEW MEXICO

DESCRIPTION 200' FSL & 950' FWL

ELEVATION 3687'

OPERATOR CAZA OPERATING, LLC

LEASE IGLOO 19 STATE

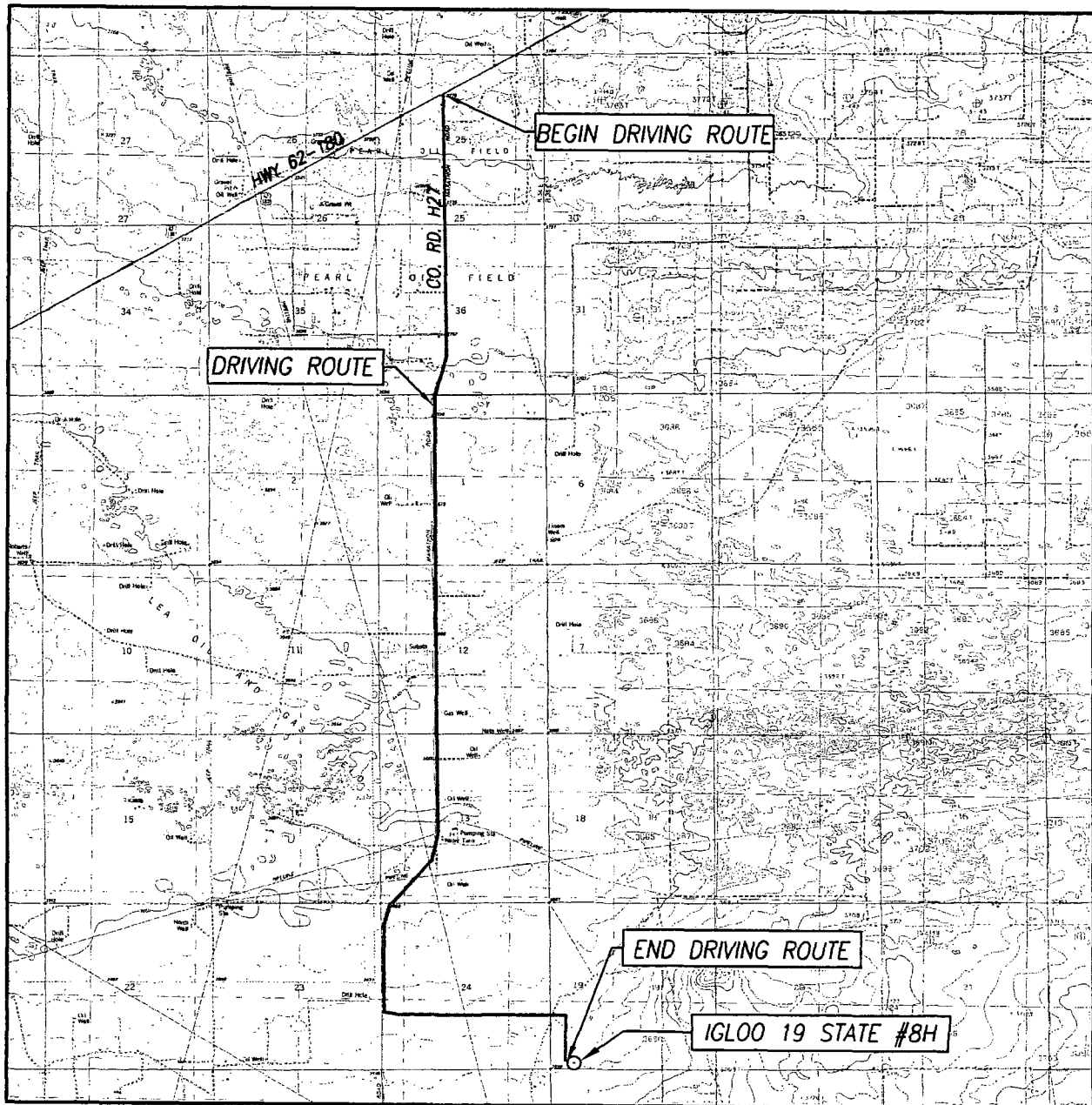


PROVIDING SURVEYING SERVICES
SINCE 1946

JOHN WEST SURVEYING COMPANY

412 N. DAL PASO HOBBS, N.M. 88240
(575) 393-3117 www.jwsc.biz
TBPLS# 10021000

LOCATION VERIFICATION MAP



SCALE: 1" = 5280'

CONTOUR INTERVAL:

MONUMENT SW, N.M. - 5'
LEA, N.M. - 10'

SEC. 19 TWP. 20-S RGE. 35-E

SURVEY N.M.P.M.

COUNTY LEA STATE NEW MEXICO

DESCRIPTION 200' FSL & 950' FWL

ELEVATION 3687'

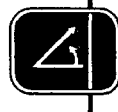
OPERATOR CAZA OPERATING, LLC

LEASE IGL00 19 STATE

U.S.G.S. TOPOGRAPHIC MAP
MONUMENT SW, N.M.

DIRECTIONS TO IGL00 19 STATE #6H:

FROM THE INTERSECTION OF HWY 62-180 AND CO. RD. H27 (MARATHON ROAD) GO SOUTH ON CO. RD. H27 APPROX. 5.5 MILES TURN LEFT ON CALICHE LSE. ROAD AND GO EAST APPROX. 1.1 MILES TURN RIGHT AND GO SOUTH APPROX 0.3 MILES THE LOCATION STAKE IS 260' EAST.



PROVIDING SURVEYING SERVICES
SINCE 1946

JOHN WEST SURVEYING COMPANY

412 N. DAL PASO HOBBS, N.M. 88240
(575) 393-3117 www.jwsc.biz

TBPLS# 10021000

LONG'S METHOD OF SURVEY COMPUTATION

OBLIQUE CIRCULAR ARC INTERPOLATION

6000	MD OF INTERPOLATION DEPTH,(feet)
#N/A	TVD COORDINATE OF THE DEPTH (feet)
#N/A	N/S COORDINATE OF DEPTH (feet)
#N/A	E/W COORDINATE OF DEPTH (feet)

3 D DISTANCE BETWEEN STATION A AND STATION B

DISTANCE TABLE

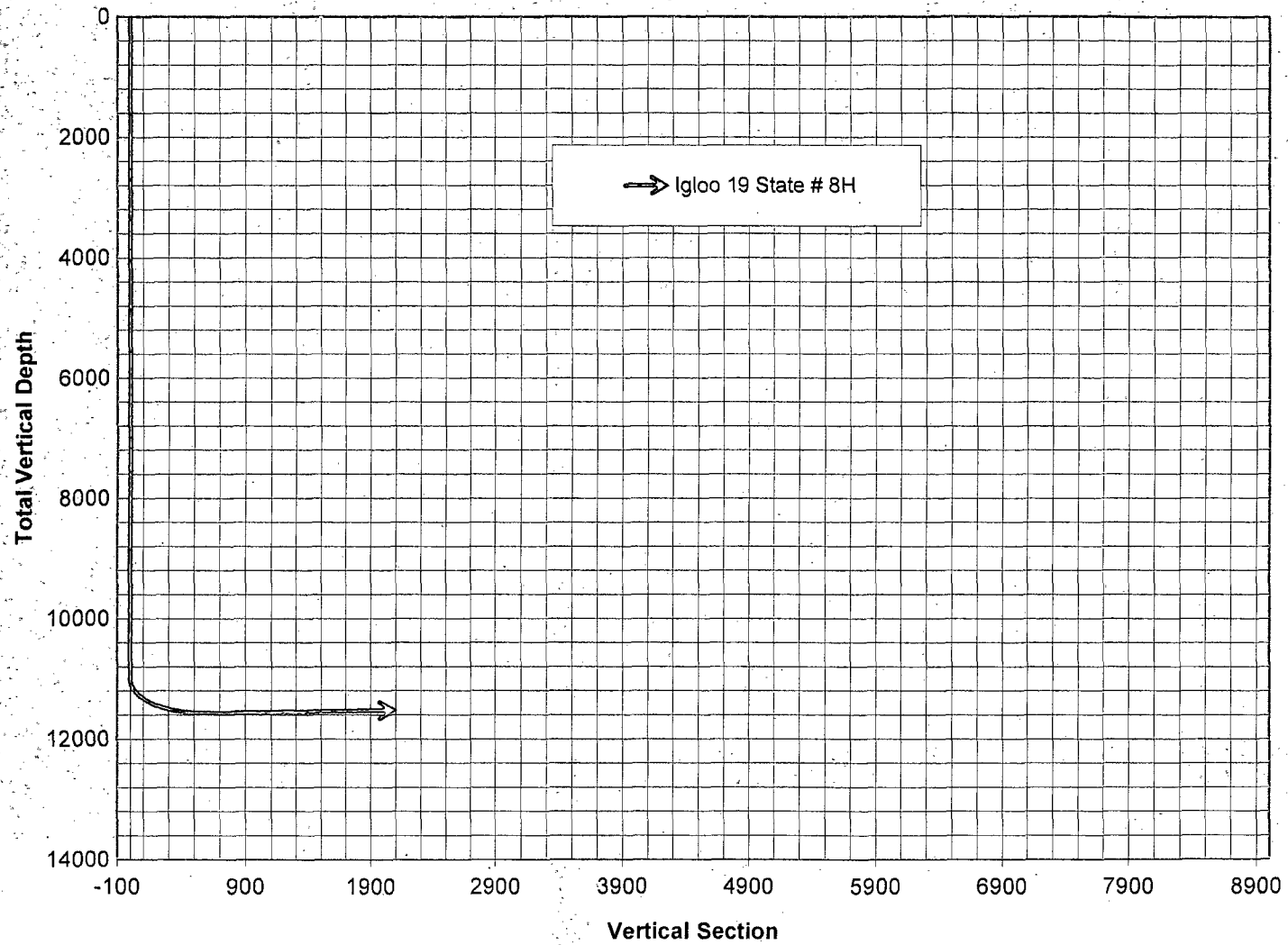
STATION A	STATION B
400.00	600.00
300.00	400.00
100.00	300.00
300.00	ft

TABLE OF SURVEY STATIONS

Calculator =

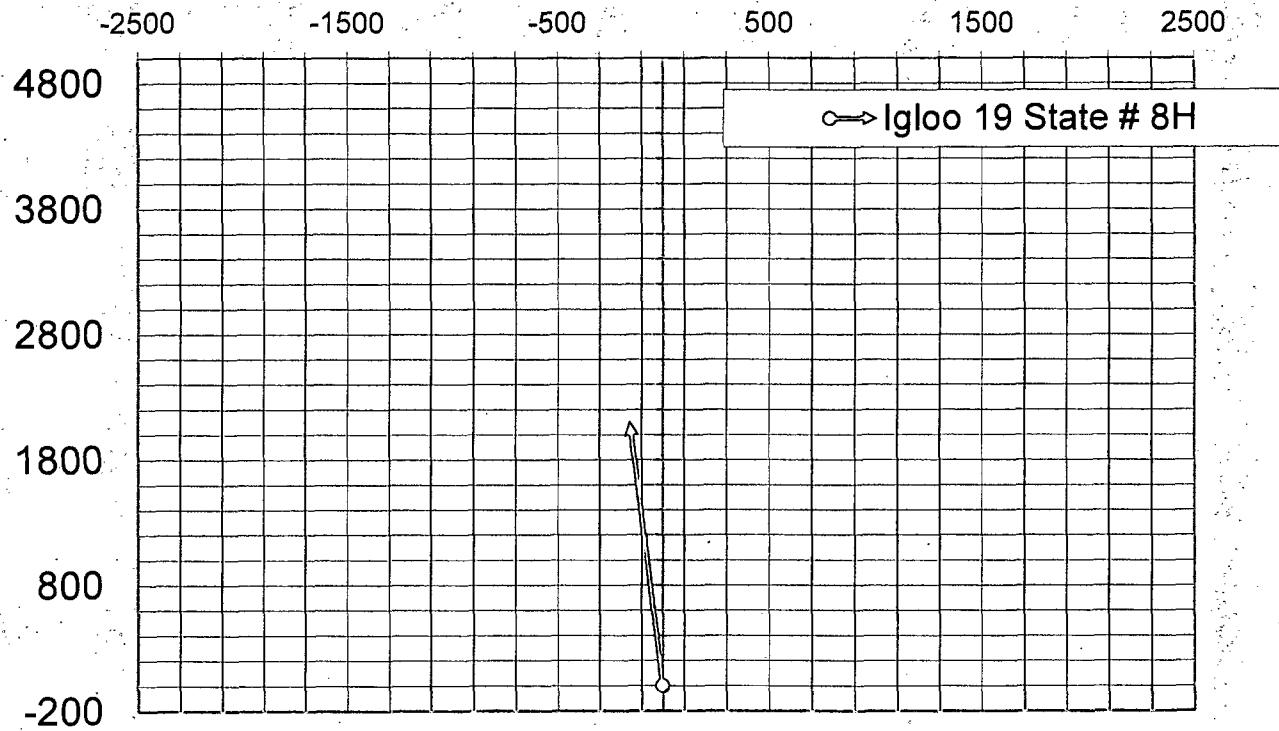
STA #	ΔMD ft	INCL deg	AZIM deg	MD ft	TVD ft	N+S- ft	E+W- ft	DLS deg/100FT
1	TIE POINT =>	0	0	11000.00	11000.00	0.00	0.00	-
2	100	10	355.78	11100.00	11099.49	8.68	-0.64	10.00
3	100	20	355.78	11200.00	11195.96	34.46	-2.54	10.00
4	100	30	355.78	11300.00	11286.48	76.55	-5.65	10.00
5	100	40	355.78	11400.00	11368.29	133.68	-9.86	10.00
6	100	50	355.78	11500.00	11438.91	204.11	-15.06	10.00
7	100	60	355.78	11600.00	11496.20	285.70	-21.08	10.00
8	100	70	355.78	11700.00	11538.40	375.97	-27.74	10.00
9	100	80	355.78	11800.00	11564.25	472.18	-34.84	10.00
10	100	90	355.78	11900.00	11572.96	571.40	-42.16	10.00
11	18	91.77	355.78	11918.00	11572.68	589.35	-43.49	9.83
12	100	91.77	355.78	12018.00	11569.59	689.03	-50.84	0.00
13	100	91.77	355.78	12118.00	11566.50	788.72	-58.20	0.00
14	100	91.77	355.78	12218.00	11563.41	888.40	-65.55	0.00
15	100	91.77	355.78	12318.00	11560.32	988.08	-72.91	0.00
16	100	91.77	355.78	12418.00	11557.24	1087.76	-80.26	0.00
17	100	91.77	355.78	12518.00	11554.15	1187.44	-87.62	0.00
18	100	91.77	355.78	12618.00	11551.06	1287.12	-94.97	0.00
19	100	91.77	355.78	12718.00	11547.97	1386.80	-102.33	0.00
20	100	91.77	355.78	12818.00	11544.88	1486.48	-109.68	0.00
21	100	91.77	355.78	12918.00	11541.79	1586.17	-117.04	0.00
22	100	91.77	355.78	13018.00	11538.70	1685.85	-124.39	0.00
23	100	91.77	355.78	13118.00	11535.61	1785.53	-131.75	0.00
24	100	91.77	355.78	13218.00	11532.53	1885.21	-139.10	0.00
25	100	91.77	355.78	13318.00	11529.44	1984.89	-146.46	0.00
26	100	91.77	355.78	13418.00	11526.35	2084.57	-153.81	0.00
27	25	91.77	355.78	13443.00	11525.58	2109.49	-155.65	0.00
28								
29								
30								
31								
32								
33								
34								
35								
36								
37								
38								
39								
40								
41								
42								
43								
44								
45								
46								
47								
48								
49								
50								
51								

Igloo 19 State # 8H



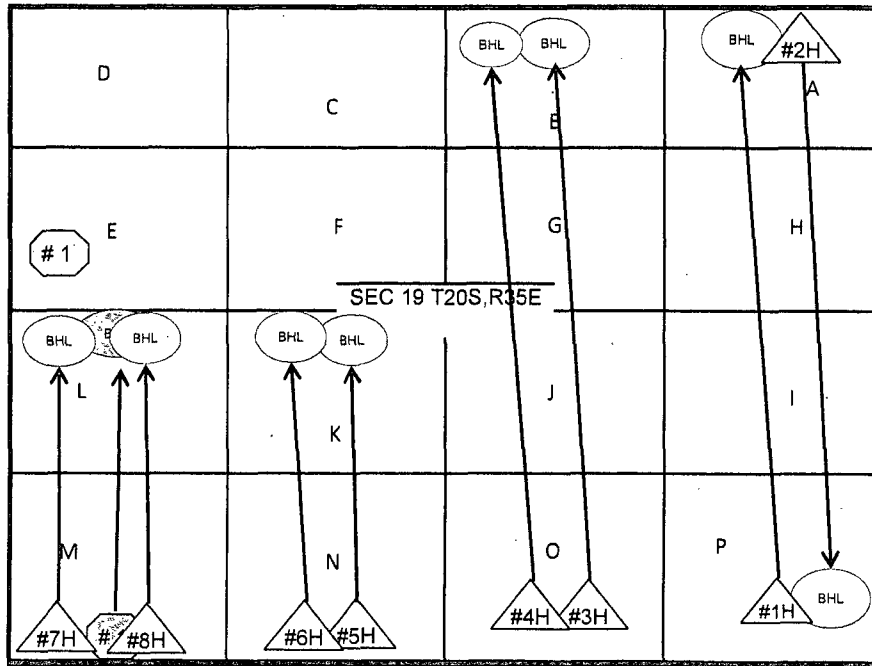
Horizontal Plane Footage +East/-West

Footage + North/- South



IGLOO 19 STATE 8H _ 3rd Bone Springs Horizontal

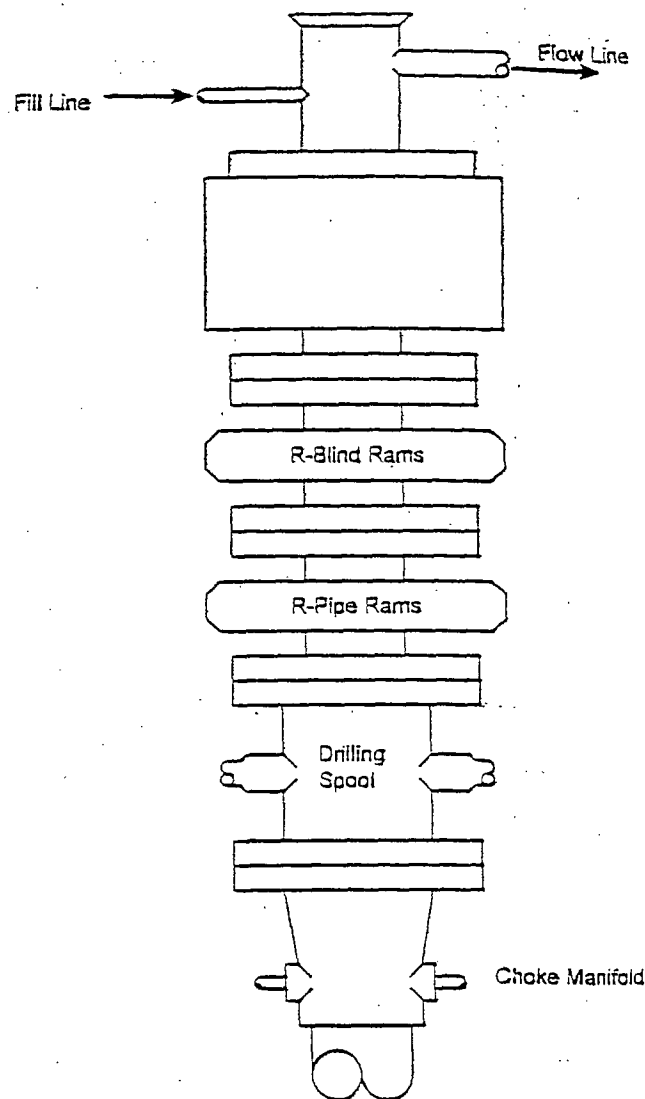
SW/SW Sec 19, T-20-S, R-35-E, Lea County, New Mexico



Well Name	Surface Location	Depth and Strata	Current Prod Zone	Plan Bottom Hole Location	
IGLOO 19 STATE #8H	200 FSL & 800 FWL	TD = 13,440 3rd Bone Sprgs	Not Drilled	2310 FSL & 660 FWL	Caza Operating, LLC
IGLOO 19 STATE #1H	200 FSL & 660 FEL	TD = 15,445 2nd Bone Sprgs	Not Drilled	330 FNL & 950 FEL	Caza Operating, LLC
IGLOO 19 STATE #3H	200 FSL & 1800 FEL	TD = 16,082 3rd Bone Sprgs	Not Drilled	330 FNL & 1980 FEL	Caza Operating, LLC
IGLOO 19 STATE #4H	200 FSL & 2000 FEL	TD = 15,441 2nd Bone Sprgs	Not Drilled	330 FNL & 2200 FEL	Caza Operating, LLC
IGLOO 19 STATE #2H	200 FNL & 660 FEL	TD = 16,000 ft 3rd Bone Sprgs	Drilled	330 FSL & 350 FEL	Caza Operating, LLC
IGLOO 19 STATE #6H	200 FSL & 1800 FWL	TD = 12,800 2nd Bone Sprgs	Not Drilled	2310 FSL & 1980 FWL	Caza Operating, LLC
IGLOO 19 STATE #7H	200 FSL & 600 FWL	TD = 12,833 2nd Bone Sprgs	Not Drilled	2310 FSL & 350 FEL	Caza Operating, LLC
IGLOO 19 STATE #5H	200 FSL & 2000 FWL	TD = 13,437 3rd Bone Sprgs	Not Drilled	2310 FSL & 1980 FWL	Caza Operating, LLC
ICE/CHEST BVC STATE COM #1H	100 FSL & 660 FWL	TD = 12,685 3rd Bone Sprgs	Not Drilled	2310 FSL & 660 FWL	Yates expired Permit

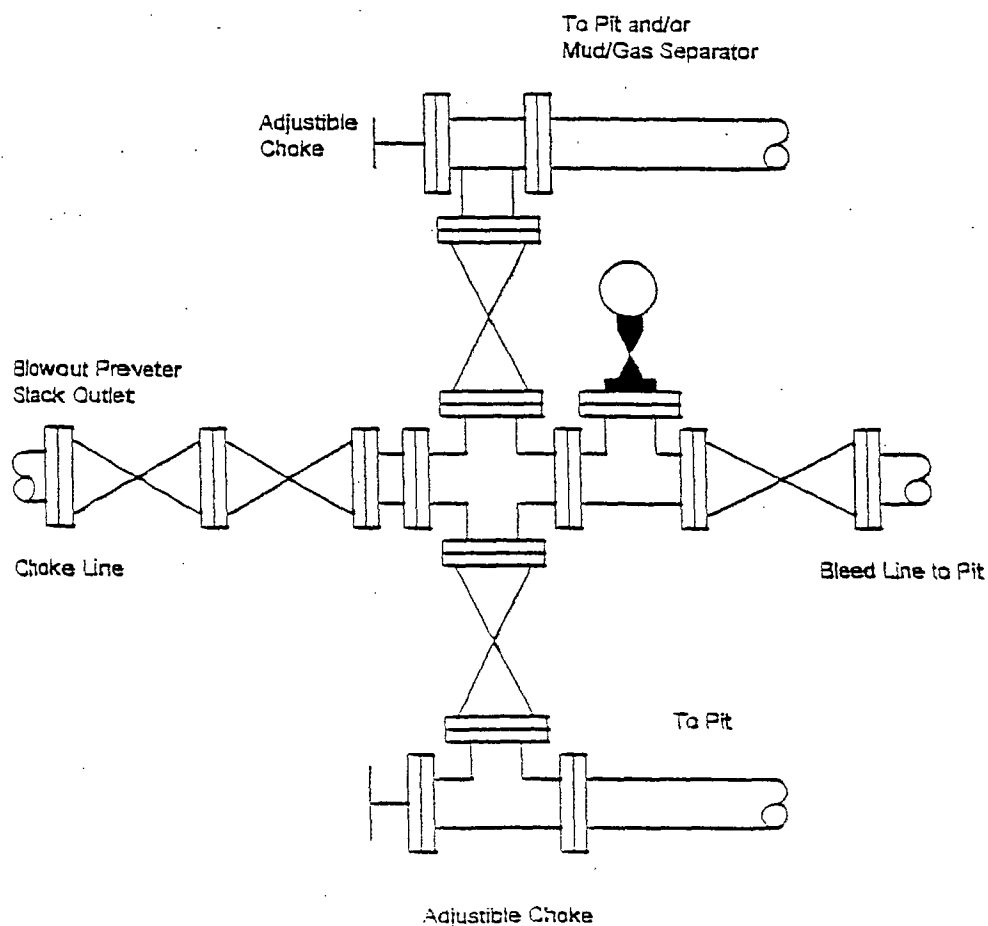
BLOWOUT PREVENTER SYSTEM

5000 PSI



Type 1500 SERIES
5000 psi WP

Choke Manifold Assembly for 5M WP System





Closed Loop Drilling System

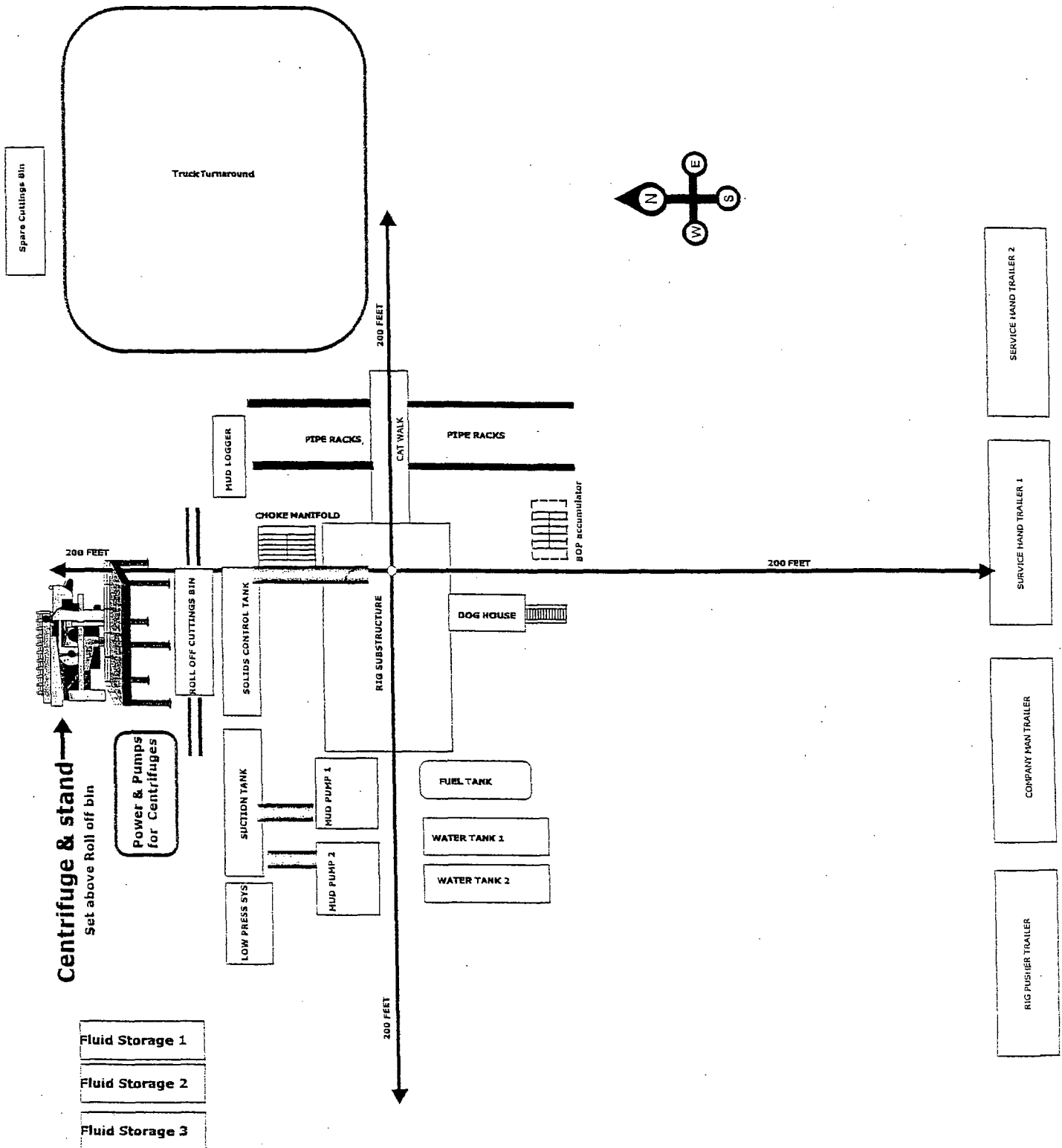
Operations and Maintenance Plan

Closed Loop equipment will be inspected and monitored closely on a daily basis by each drilling rig Tour and by those hired specifically to operate the equipment. Any leak or release detected will be repaired immediately and the proper NMOCD official will be notified within the 48 hr requirement. A large release will require Caza Operating, LLC representatives to contact BLM immediately at the Carlsbad office "575 234 5972" Hobbs "575 393 3612" as well as the NMOCD @ 575 393 6161 as stated by NMOCD rule 116.

Closure Plan

During and after drilling operations, liquids (which apply), all drill cuttings and drilling fluids will be hauled and disposed of at the R-360 disposal (permit number NM 01-0006) located about 30 miles East of Carlsbad, New Mexico. An alternate approved disposal site has been selected Parabo disposal "Sundance" which is 4 miles East of Eunice (permit number NM 01-0003). The Second site would be used in the event of economics or physical problems with R-360 disposal.

Closed Loop Oil Well



Note: The Rig and Closed System Company for this well have not been selected thus the set up shown is simply generic.