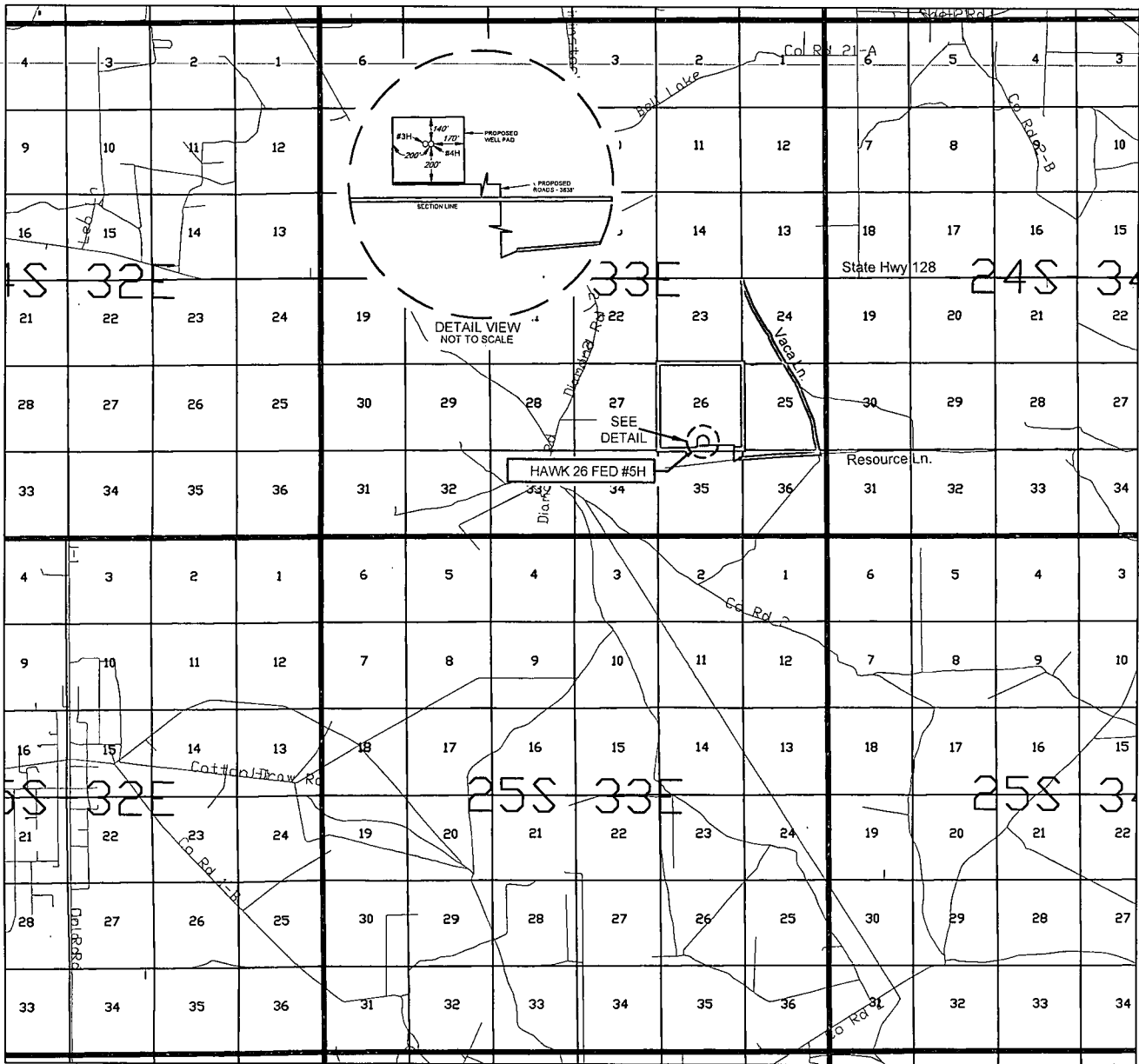


FEB 03 2015

EXHIBIT 2 VICINITY MAP



LEASE NAME & WELL NO.: HAWK 26 FED #5H

SECTION 26 TWP 24-S RGE 33-E SURVEY N.M.P.M.
COUNTY LEA STATE NM
DESCRIPTION 500' FSL & 2465' FEL

DISTANCE & DIRECTION FROM INT. OF NM-18 N & NM-128, GO WEST
ON NM-128 W ±22.0 MILES, THENCE SOUTH ON VACA LN. ±2.3 MILES,
THENCE WEST ON RESOURCE LN. ±0.9 MILES, THENCE SOUTH ON
PROPOSED ROAD ±515 FEET, THENCE NORTH ON PROPOSED ROAD
±995 FEET, THENCE WEST ON PROPOSED ROAD ±2128 FEET,
TO A POINT ±270 FEET SOUTH OF THE LOCATION.

THIS PROPOSED LOCATION SHOWN HEREON HAS BEEN SURVEYED ON THE GROUND UNDER MY SUPERVISION AND PREPARED ACCORDING TO THE EVIDENCE FOUND AT THE TIME OF SURVEY, AND DATA PROVIDED BY EOG RESOURCES, INC. THIS CERTIFICATION IS MADE AND LIMITED TO THOSE PERSONS OR ENTITIES SHOWN ON THE FACE OF THIS PLAT AND IS NON-TRANSFERABLE. THIS SURVEY IS CERTIFIED FOR THIS TRANSACTION ONLY.

ALL BEARINGS, DISTANCES, AND COORDINATE VALUES CONTAINED HEREON ARE GRID BASED UPON THE NEW MEXICO STATE PLANE COORDINATE SYSTEM, EAST ZONE OF THE NORTH AMERICAN DATUM 1927, U.S. SURVEY FEET.



SCALE: 1" = 10000'
0' 5000' 10000'

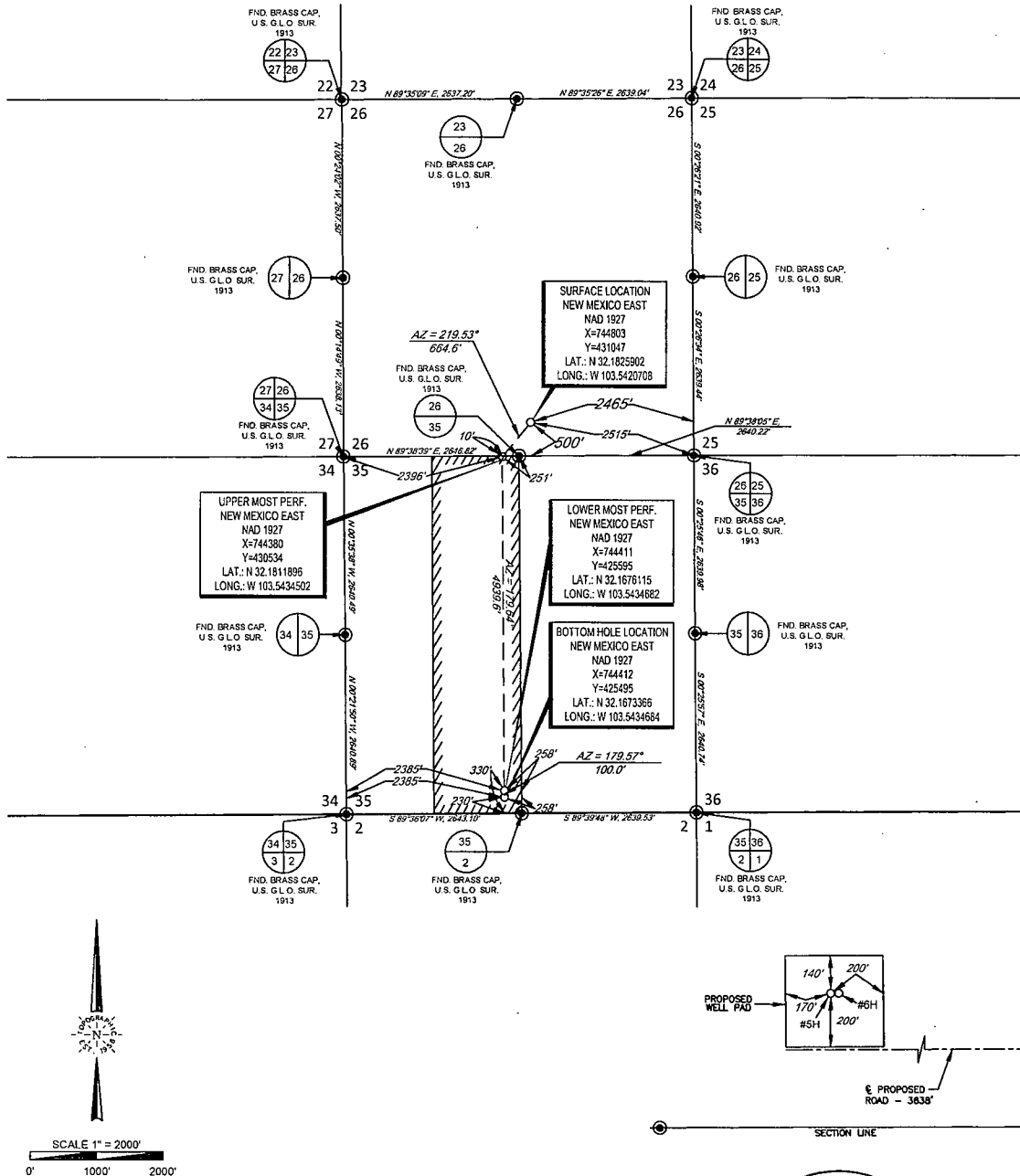


TOPOGRAPHIC
LOYALTY INNOVATION LEGACY

1400 EVERMAN PARKWAY, Ste. 197 • FT. WORTH, TEXAS 76140
TELEPHONE: (817) 744-7512 • FAX (817) 744-7548
2903 NORTH BIG SPRING • MIDLAND, TEXAS 79705
TELEPHONE: (432) 682-1653 OR (800) 767-1653 • FAX (432) 682-1743
WWW.TOPOGRAPHIC.COM

EXHIBIT 2A

SECTION 26, TOWNSHIP 24 SOUTH, RANGE 33 EAST, N.M.P.M.
LEA COUNTY, NEW MEXICO



LEASE NAME & WELL NO.: HAWK 26 FED #5H

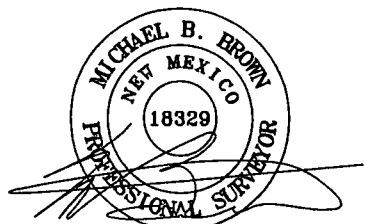
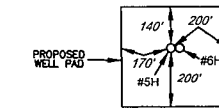
SECTION 26 TWP 24-S RGE 33-E SURVEY N.M.P.M.
COUNTY LEA STATE NM
DESCRIPTION 500' FSL & 2465' FEL

DISTANCE & DIRECTION FROM INT. OF NM-18 N & NM-128,
GO WEST ON NM-128 W ±22.0 MILES, THENCE SOUTH ON VACA LN. ±2.3
MILES, THENCE WEST ON RESOURCE LN. ±0.9 MILES, THENCE SOUTH
ON PROPOSED ROAD ±515 FEET, THENCE NORTH ON PROPOSED
ROAD ±995 FEET, THENCE WEST ±2128 FEET, TO A POINT ±270 FEET
SOUTH OF THE LOCATION.

ALL BEARINGS, DISTANCES, AND COORDINATE VALUES CONTAINED HEREON ARE GRID
BASED UPON THE NEW MEXICO STATE PLANE COORDINATE SYSTEM, EAST ZONE OF THE
NORTH AMERICAN DATUM 1927, U.S. SURVEY FEET

THIS PROPOSED LOCATION SHOWN HEREON HAS BEEN SURVEYED ON THE GROUND UNDER MY
SUPERVISION AND PREPARED ACCORDING TO THE EVIDENCE FOUND AT THE TIME OF SURVEY, AND
DATA PROVIDED BY EOG RESOURCES, INC. THIS CERTIFICATION IS MADE AND LIMITED TO THOSE
PERSONS OR ENTITIES SHOWN ON THE FACE OF THIS PLAN AND IS NON-TRANSFERABLE. THIS
SURVEY IS CERTIFIED FOR THIS TRANSACTION ONLY.

DETAIL VIEW
SCALE: 1" = 500'



Michael Blake Brown, P.S. No. 18329
FEBRUARY 06, 2014

 **TOPOGRAPHIC**
LOYALTY INNOVATION LEGACY

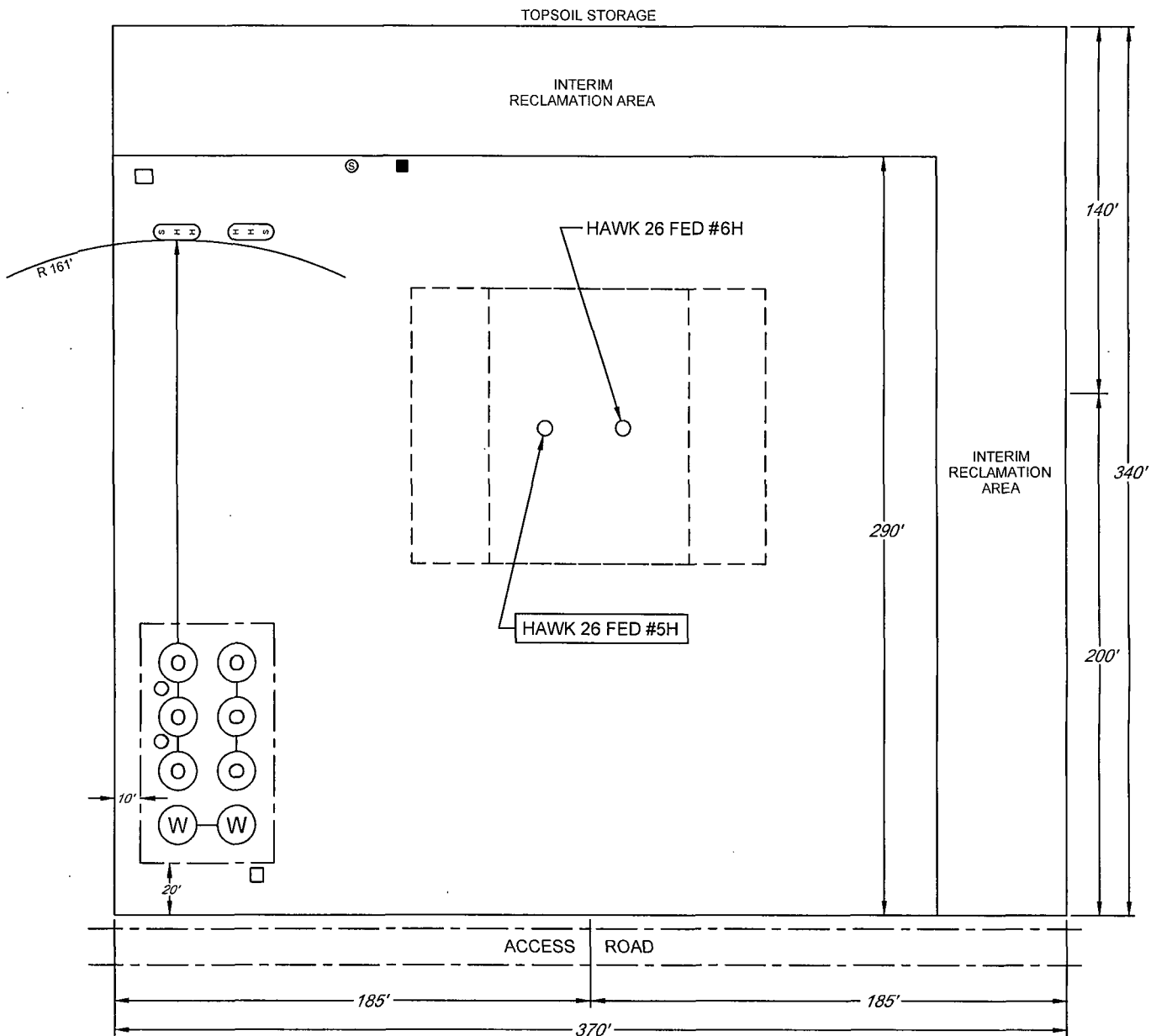
1400 EVERMAN PARKWAY, Ste. 197 • FT. WORTH, TEXAS 76140
TELEPHONE: (817) 744-7512 • FAX: (817) 744-7548
2903 NORTH BIG SPRING • MIDLAND, TEXAS 79705
TELEPHONE: (432) 682-1653 OR (800) 767-1653 • FAX (432) 682-1743
WWW.TOPOGRAPHIC.COM

EXHIBIT 2C

RECLAMATION AND FACILITY DIAGRAM - PRODUCTION FACILITIES DIAGRAM

SECTION 26, TOWNSHIP 24 SOUTH, RANGE 33 EAST, N.M.P.M.
LEA COUNTY, NEW MEXICO

DETAIL VIEW
SCALE: 1" = 60'



LEASE NAME & WELL NO.: HAWK 26 FED #5H
#5H LATITUDE N 32.1825902 #5H LONGITUDE W 103.5420708

LEGEND

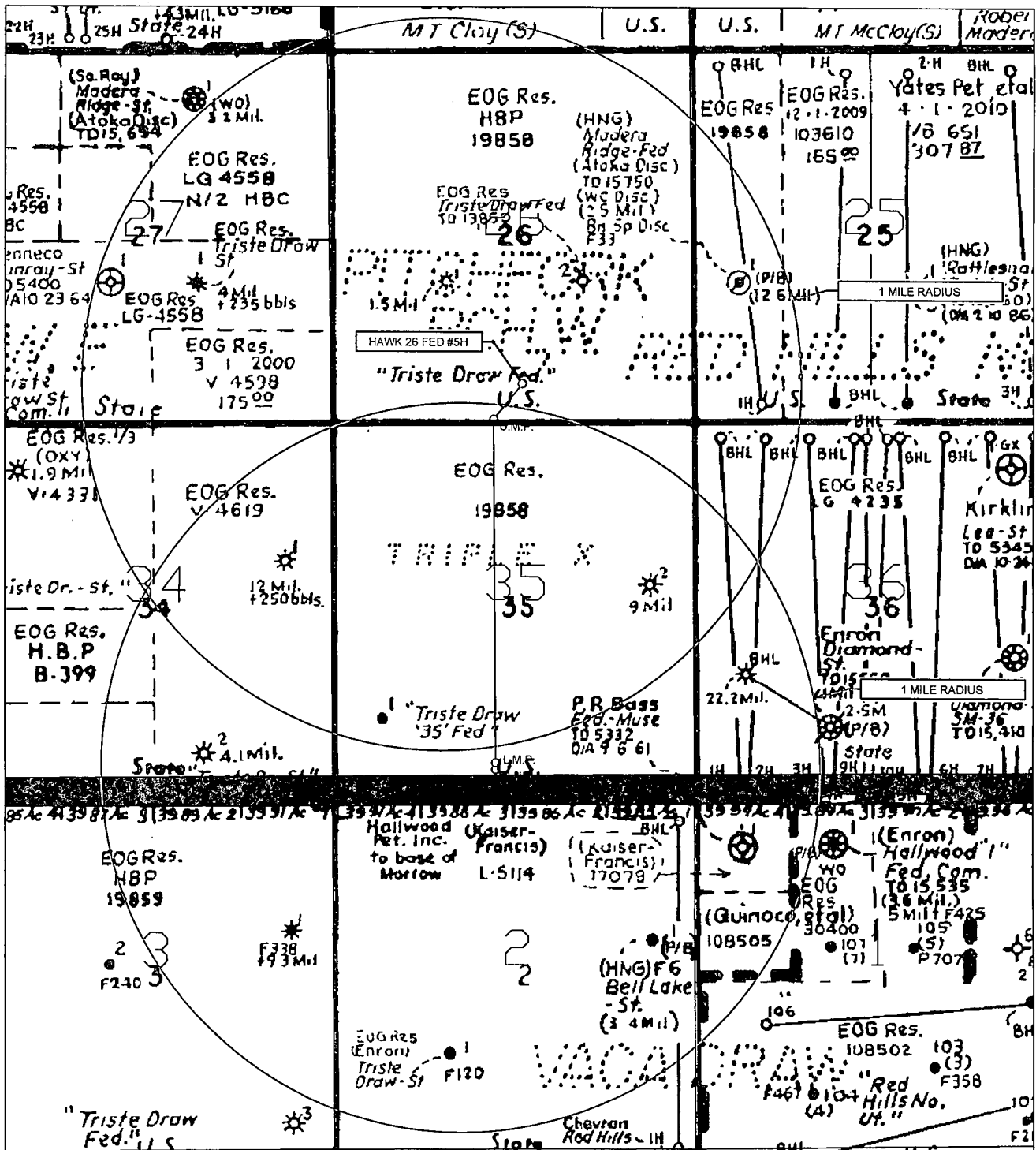
	500 BBL OIL TANK		FLARE SEPARATOR
	500 BBL WATER TANK		VRU
	36 x 15 HEATER/SEPARATOR		48 X 25 VRT
			FP FLARE
			OP FLARE

EXHIBIT 3



eog resources, inc.

SECTION 26, TOWNSHIP 24 SOUTH, RANGE 33 EAST, N.M.P.M.
LEA COUNTY, NEW MEXICO



LEASE NAME & WELL NO.: HAWK 26 FED #5H

SCALE: NTS

#5H LATITUDE N 32.1825902

#5H LONGITUDE W 103.5420708

LEGEND

ALL BEARINGS, DISTANCES, AND COORDINATE VALUES CONTAINED HEREON ARE GRID BASED UPON THE NEW MEXICO STATE PLANE COORDINATE SYSTEM, EAST ZONE OF THE NORTH AMERICAN DATUM 1927, U.S. SURVEY FEET

THIS EASEMENT/SERVITUDE LOCATION SHOWN HEREON HAS BEEN SURVEYED ON THE GROUND UNDER MY SUPERVISION AND PREPARED ACCORDING TO THE EVIDENCE FOUND AT THE TIME OF SURVEY, AND DATA PROVIDED BY EOG RESOURCES, INC. THIS CERTIFICATION IS MADE AND LIMITED TO THOSE PERSONS OR ENTITIES SHOWN ON THE FACE OF THIS PLAT AND IS NON-TRANSFERABLE. THIS SURVEY IS CERTIFIED FOR THIS TRANSACTION ONLY.

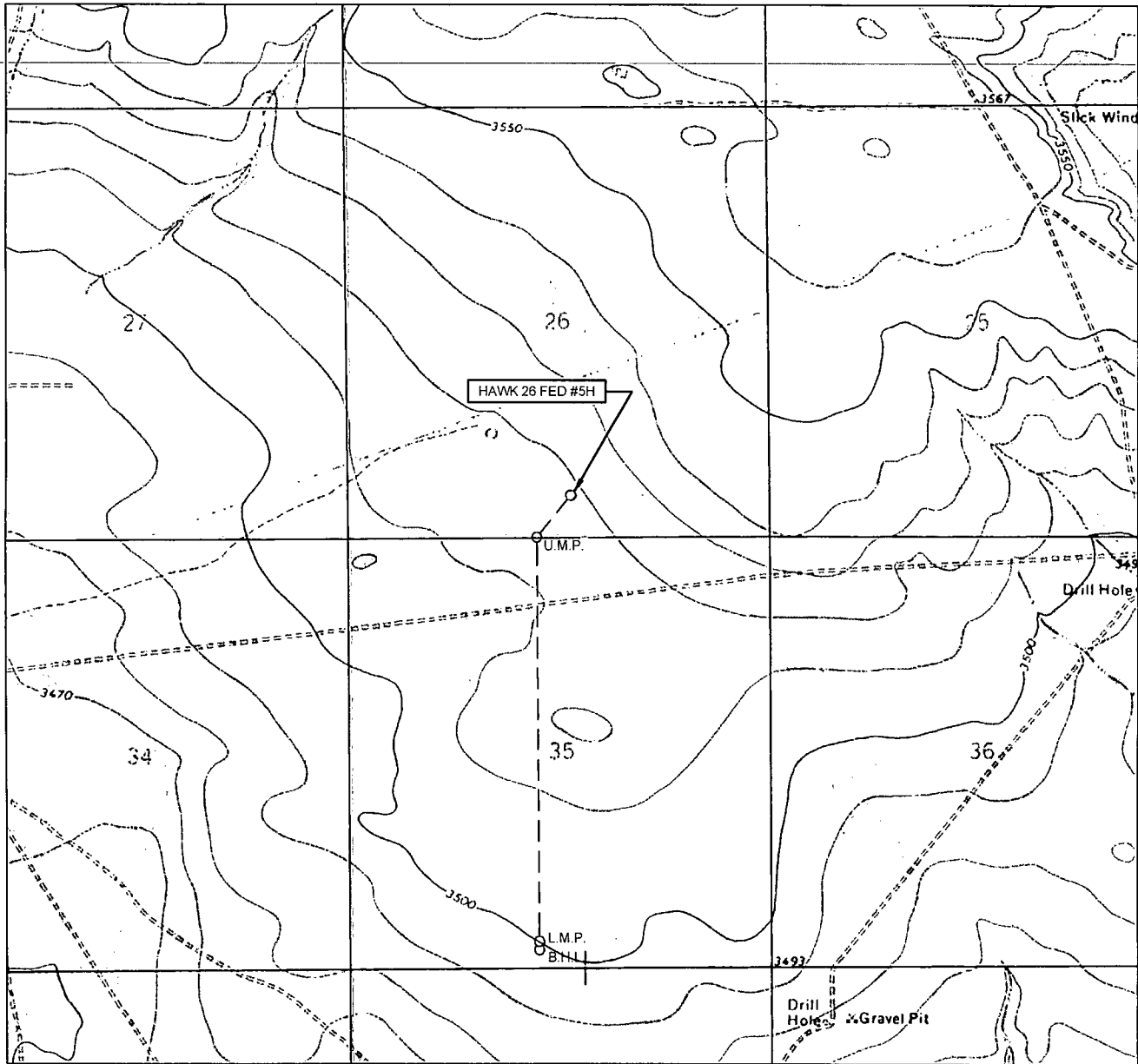
- EXISTING ROAD
- SECTION LINE
- EXISTING PIPELINE
- OVERHEAD ELECTRIC
- FENCE LINE



TOPOGRAPHIC
LOYALTY INNOVATION LEGACY

1400 EVERMAN PARKWAY, Ste. 197 • FT. WORTH, TEXAS 76140
TELEPHONE: (817) 744-7512 • FAX (817) 744-7548
2903 NORTH BIG SPRING • MIDLAND, TEXAS 79705
TELEPHONE: (432) 682-1653 OR (800) 767-1653 • FAX (432) 682-1743
WWW.TOPOGRAPHIC.COM

LOCATION & ELEVATION VERIFICATION MAP



LEASE NAME & WELL NO.: HAWK 26 FED #5H

SECTION 26 TWP 24-S RGE 33-E SURVEY N.M.P.M.
 COUNTY LEA STATE NM ELEVATION 3519'
 DESCRIPTION 500' FSL & 2464' FEL

LATITUDE N 32.1825902 LONGITUDE W 103.5420708



SCALE: 1" = 2000'
 0' 1000' 2000'



TOPOGRAPHIC
 LOYALTY INNOVATION LEGACY

1400 EVERMAN PARKWAY, Ste. 197 • FT. WORTH, TEXAS 76140
 TELEPHONE: (817) 744-7512 • FAX (817) 744-7548
 2903 NORTH BIG SPRING • MIDLAND, TEXAS 79705
 TELEPHONE: (432) 682-1653 OR (800) 767-1653 • FAX (432) 682-1743
 WWW.TOPOGRAPHIC.COM

THIS PROPOSED LOCATION SHOWN HEREON HAS BEEN SURVEYED ON THE GROUND UNDER MY SUPERVISION AND PREPARED ACCORDING TO THE EVIDENCE FOUND AT THE TIME OF SURVEY, AND DATA PROVIDED BY EOG RESOURCES, INC. THIS CERTIFICATION IS MADE AND LIMITED TO THOSE PERSONS OR ENTITIES SHOWN ON THE FACE OF THIS PLAT AND IS NON-TRANSFERABLE. THIS SURVEY IS CERTIFIED FOR THIS TRANSACTION ONLY.

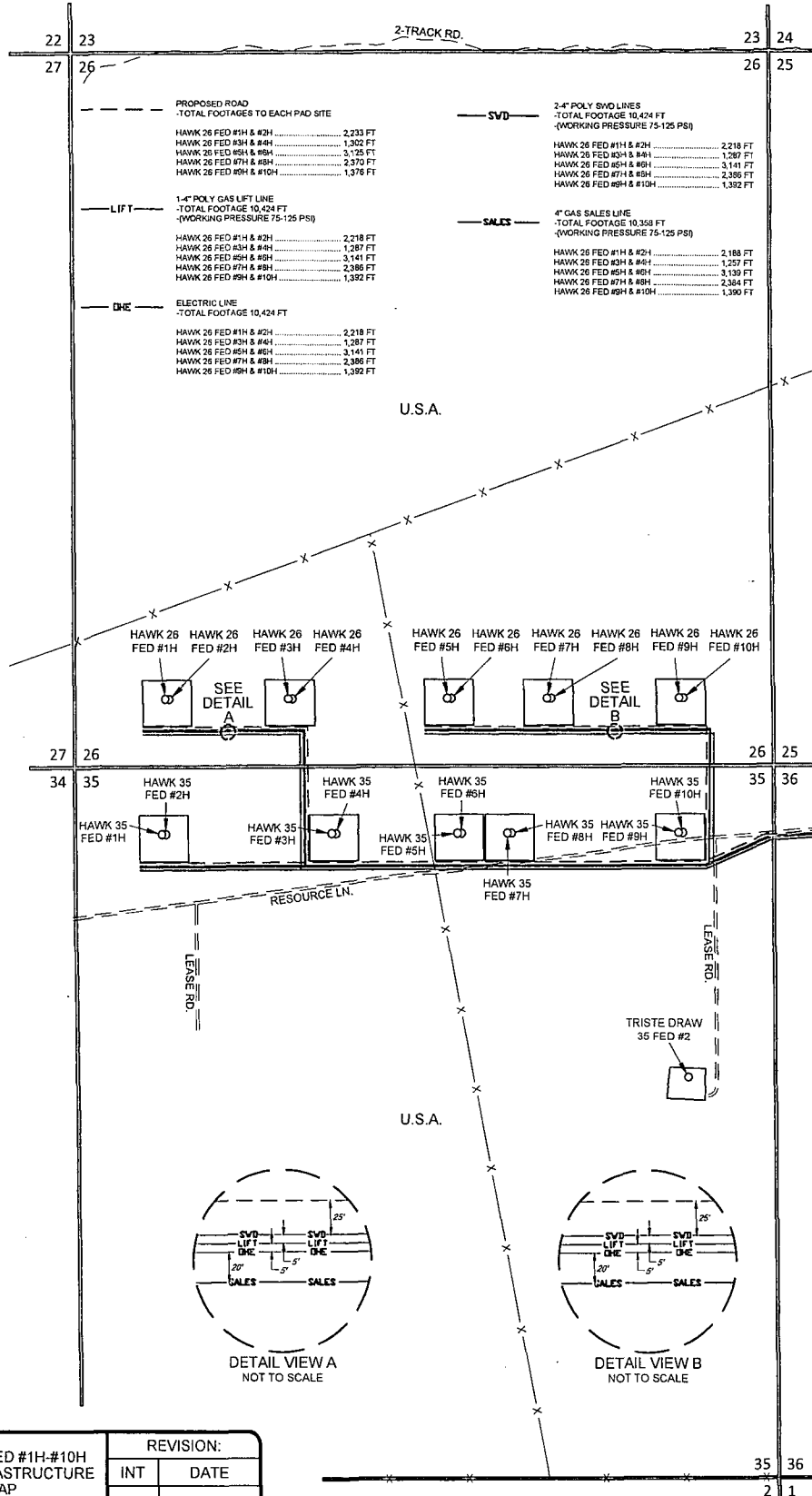
ALL BEARINGS, DISTANCES, AND COORDINATE VALUES CONTAINED HEREON ARE GRID BASED UPON THE NEW MEXICO STATE PLANE COORDINATE SYSTEM, EAST ZONE OF THE NORTH AMERICAN DATUM 1927, U.S. SURVEY FEET.

SCALE 1" = 1000'
0' 1000' 2000'

EXHIBIT 5

SECTION 26 & 35, TOWNSHIP 24 SOUTH, RANGE 33 EAST, N.M.P.M.
LEA COUNTY, NEW MEXICO

HAWK 26 FED #1H-#10H LEASE INFRASTRUCTURE MAP



HAWK 26 FED #1H-#10H LEASE INFRASTRUCTURE MAP	REVISION:	
	INT	DATE
DATE: 03/13/14		
FILE: SK_HAWK26FED_1H-10H_INFRASTRUCTURE_MAP		
DRAWN BY: A.C.C.		
SHEET: 1 OF 1		

eog resources, inc.