

District I  
1625 N. French Dr., Hobbs, NM 88240  
Phone: (575) 393-6161 Fax: (575) 393-0720  
District II  
811 S. First St., Artesia, NM 88210  
Phone: (575) 748-1283 Fax: (575) 748-9720  
District III  
1000 Rio Brazos Road, Aztec, NM 87410  
Phone: (505) 334-6178 Fax: (505) 334-6170  
District IV  
1220 S. St. Francis Dr., Santa Fe, NM 87505  
Phone: (505) 476-3460 Fax: (505) 476-3462

State of New Mexico  
Energy, Minerals & Natural Resources Department  
OIL CONSERVATION DIVISION  
1220 South St. Francis Dr.  
Santa Fe, NM 87505

Form C-102  
Revised August 1, 2011  
Submit one copy to appropriate  
District Office

☐ AMENDED REPORT

WELL LOCATION AND ACREAGE DEDICATION PLAT

<sup>1</sup> API Number <b>30-025-42420</b>		<sup>2</sup> Pool Code <b>96193</b>		<sup>3</sup> Pool Name <b>Brinningsteel</b> MADERA, DELAWARE	
<sup>4</sup> Property Code <b>30884</b>		<sup>5</sup> Property Name <b>THISTLE UNIT</b>			<sup>6</sup> Well Number <b>23H</b>
<sup>7</sup> OGRID NO. <b>6137</b>		<sup>8</sup> Operator Name <b>DEVON ENERGY PRODUCTION COMPANY, L. P.</b>			<sup>9</sup> Elevation <b>3632'</b>
<sup>10</sup> Surface Location					
UL or lot no. <b>M</b>	Section <b>34</b>	Township <b>23S</b>	Range <b>33E</b>	Lot Idn <b>89</b>	Feet from the <b>SOUTH</b> Feet from the <b>1200</b> East/West line <b>WEST</b> County <b>LEA</b>
<sup>11</sup> Bottom Hole Location If Different From Surface					
UL or lot no. <b>D</b>	Section <b>34</b>	Township <b>23S</b>	Range <b>33E</b>	Lot Idn <b>330</b>	Feet from the <b>NORTH</b> Feet from the <b>1200</b> East/West line <b>WEST</b> County <b>LEA</b>
<sup>12</sup> Dedicated Acres <b>160</b>	<sup>13</sup> Joint or Infill	<sup>14</sup> Consolidation Code	<sup>15</sup> Order No.		

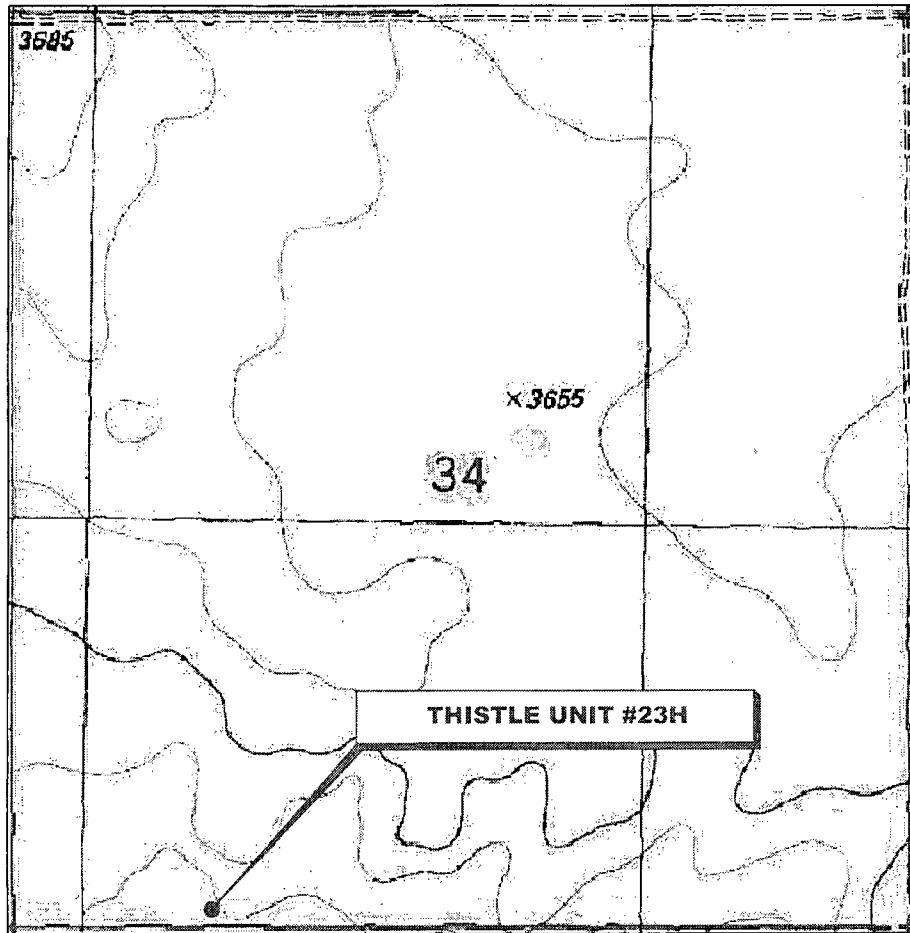
No allowable will be assigned to this completion until all interest have been consolidated or a non-standard unit has been approved by the division.

<p>Diagram details: Section 34, Township 23S, Range 33E. Well location marked with a circle and 'B. H.'. Survey points A, B, C, D, E, F, G, H, I, J, K, L, M, N, O, P, Q, R, S, T, U, V, W, X, Y, Z. Bearings and distances: S 89°41'36" W 5281.10', N 00°26'25" W (GRID) 4871.48' (HORIZ.), N 00°25'38" W 2645.21', S 89°41'24" W 2638.60', S 89°39'13" W 2640.62', N 00°27'37" W 2646.18', N 00°25'50" E 2650.36', S 00°24'59" E 2639.05'. Other labels: 1200', 330', 89', 34, PP: 300 FSL &amp; 1200 FWL.</p>	<p><b>17 OPERATOR CERTIFICATION</b> I hereby certify that the information contained herein is true and complete to the best of my knowledge and belief, and that this organization either owns a working interest or unleased mineral interest in the land including the proposed bottom hole location or has a right to drill this well at this location pursuant to a contract with an owner of such a mineral or working interest, or to a voluntary pooling agreement or a compulsory pooling order heretofore entered by the division.</p> <p>Signature: <i>[Signature]</i> Date: <b>2/3/2015</b> David H. Cook Regulatory Specialist Printed Name: <b>david.cook@dvn.com</b> E-mail Address:</p>
	<p><b>18 SURVEYOR CERTIFICATION</b> I hereby certify that the well location shown on this plat was plotted from field notes of actual surveys made by me or under my supervision, and that the same is true and correct to the best of my belief.</p> <p>Date of Survey: <b>12-1-14</b> Signature and Seal of Professional Surveyor: <i>[Signature]</i> Certificate Number: <b>20451</b></p>

RRC - Firm No.: TX 10193838 NM 4655451 - Job No.: LS140509

FEB 04 2015

# LOCATION VERIFICATION MAP



*SECTION 34, TWP. 23 SOUTH, RGE. 33 EAST,  
N. M. P. M., LEA CO., NEW MEXICO*

OPERATOR: Devon Energy  
Production Company, L. P.  
LEASE: Thistle Unit  
WELL NO.: #23H  
ELEVATION: 3632'

LOCATION: 89' FSL & 1200' FWL  
CONTOUR INTERVAL: 10'  
USGS TOPO. SOURCE MAP:  
Tip Top Wells, NM (1984)

Firm No.: TX 10193838 NM 4555451

Copyright 2014 - All Rights Reserved

NO.	REVISION	DATE
JOB NO.:	LS140509	
DWG. NO.:	140509LVM	

## RRC

308 W. BROADWAY ST., HOBBS, NM 88240 (575) 964-8200

SCALE: 1"=1000'  
DATE: 12-1-14  
SURVEYED BY: IE/DH  
DRAWN BY: JC  
APPROVED BY: REB  
SHEET : 1 OF 5

# VICINITY MAP

NOT TO SCALE



SECTION 34, TWP. 23 SOUTH, RGE. 33 EAST,  
N. M. P. M., LEA CO., NEW MEXICO

OPERATOR: Devon Energy  
Production Company, L. P.

LOCATION: 89' FSL & 1200' FWL  
ELEVATION: 3632'

LEASE: Thistle Unit  
WELL NO.: #23H

Firm No.: TX 10193838 NM 4655451

Copyright 2014 - All Rights Reserved

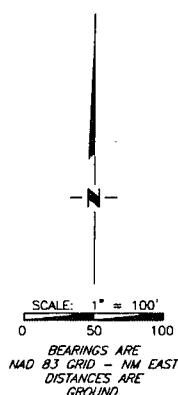
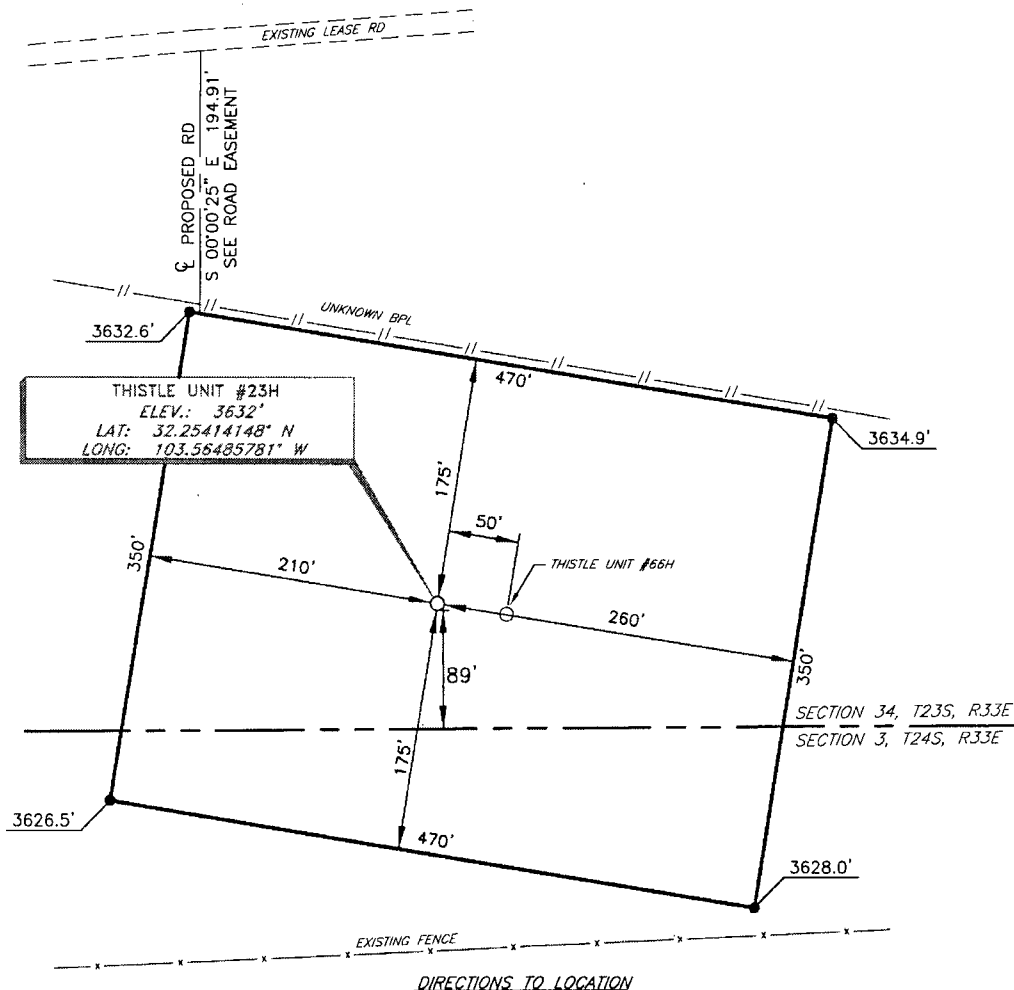
NO.	REVISION	DATE
JOB NO.: LS140509		
DWG. NO.: 140509VM		

# RRC

308 W. BROADWAY ST., HOBBS, NM 88240 (575) 964-8200

SCALE: NTS
DATE: 12-1-14
SURVEYED BY: IE/DH
DRAWN BY: JC
APPROVED BY: REB
SHEET : 2 OF 5

DEVON ENERGY PRODUCTION COMPANY, L. P.  
 THISTLE UNIT #23H  
 (89' FSL & 1200' FWL)  
 SECTION 34, T23S, R33E  
 N. M. P. M., LEA CO., NEW MEXICO



**DIRECTIONS TO LOCATION**

From the intersection of XL Road and CR 2-A (Brininstool Rd);  
 Go Southeast on CR 2-A (Brininstool Road) approx. 1.0 miles to a lease road turn left;  
 Go east approx. 0.3 miles to a proposed road turn right on proposed road;  
 Go South approx. 195 feet into the Northwest pad corner of Location.

Firm No.: TX 10193838 NM 4555451

Copyright 2014 - All Rights Reserved

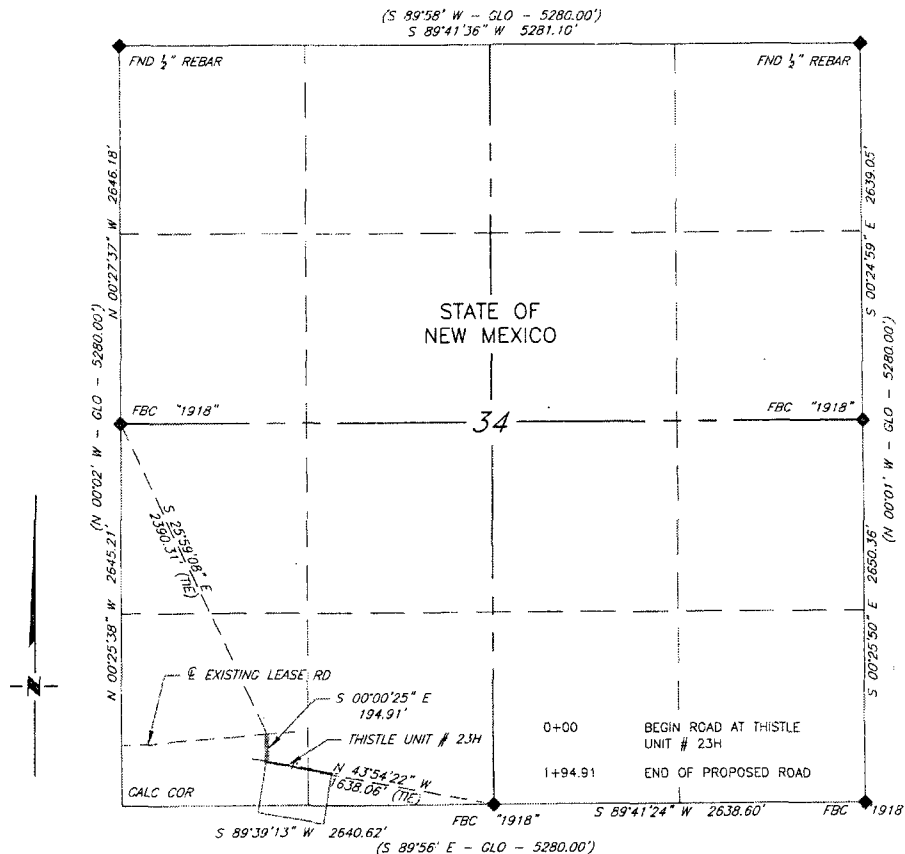
NO.	REVISION	DATE
JOB NO.:	LS140509	
DWG. NO.:	140509PAD	

**RRC**

308 W. BROADWAY ST., HOBBS, NM 88240 (575) 964-8200

SCALE: 1" = 100'
DATE: 12-1-14
SURVEYED BY: IE/DH
DRAWN BY: JC
APPROVED BY: REB
SHEET : 3 OF 5

**DEVON ENERGY PRODUCTION COMPANY, LP  
PROPOSED ROAD EASEMENT FROM  
THE THISTLE UNIT #23H TO  
AN EXISTING LEASE ROAD  
SECTION 34, T23S, R33E  
N. M. P. M., LEA CO., NEW MEXICO**



SCALE: 1" = 1000'  
0 500 1000

BEARINGS ARE GRID NAD 83  
NW EAST  
DISTANCES ARE HORIZ. GROUND.

**LEGEND**

- ( ) RECORD DATA - GLO
- ◆ FOUND MONUMENT AS NOTED
- PROPOSED ROAD
- OVERHEAD UTILITIES
- EXISTING BPL

I, Richard E Brooks, a New Mexico Professional Surveyor, do hereby certify that the plat shown hereon accurately depicts the conditions on the ground at the time of the survey; that all work was done under my direct supervision and meets the State of New Mexico minimum standards for land surveying to the best of my knowledge.

*[Signature]*  
Richard E Brooks NM PS 20451



Firm No.: TX 10193838 NM 4655451

Copyright 2014 - All Rights Reserved

NO.	REVISION	DATE

**RRC**

308 W. BROADWAY ST., HOBBS, NM 88240 (575) 964-8200

SCALE: 1" = 1000'
DATE: 12-1-14
SURVEYED BY: IE/DH
DRAWN BY: LNY
APPROVED BY: REB
SHEET : 4 OF 5