

District I
1625 N. French Dr., Hobbs, NM 88240
Phone: (575) 393-6161 Fax: (575) 393-0720
District II
811 S. First St., Artesia, NM 88210
Phone: (575) 748-1283 Fax: (575) 748-9720
District III
1000 Rio Brazos Road, Aztec, NM 87410
Phone: (505) 334-6178 Fax: (505) 334-6170
District IV
1220 S. St. Francis Dr., Santa Fe, NM 87505
Phone: (505) 476-3460 Fax: (505) 476-3462

State of New Mexico
Energy, Minerals & Natural Resources Department
OIL CONSERVATION DIVISION
1220 South St. Francis Dr.
Santa Fe, NM 87505

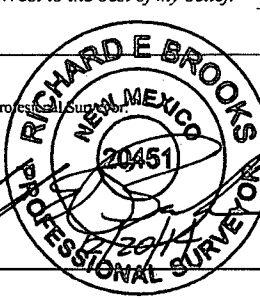
Form C-102
Revised August 1, 2011
Submit one copy to appropriate
District Office

☐ AMENDED REPORT

WELL LOCATION AND ACREAGE DEDICATION PLAT

¹ API Number 30-025-42425		² Pool Code 59900		³ Pool Name Triple X; Bone Spring					
⁴ Property Code 30884		⁵ Property Name THISTLE UNIT			⁶ Well Number 71H				
⁷ GRID NO. 6137		⁸ Operator Name DEVON ENERGY PRODUCTION COMPANY, L. P.			⁹ Elevation 3681'				
¹⁰ Surface Location									
UL or lot no. A	Section 27	Township 23S	Range 33E	Lot Idn	Feet from the 200	North/South line NORTH	Feet From the 632	East/West line EAST	County LEA
¹¹ Bottom Hole Location If Different From Surface									
UL or lot no. P	Section 27	Township 23S	Range 33E	Lot Idn	Feet from the 330	North/South line SOUTH	Feet from the 632	East/West line EAST	County LEA
¹² Dedicated Acres 160 ac		¹³ Joint or Infill		¹⁴ Consolidation Code		¹⁵ Order No.			

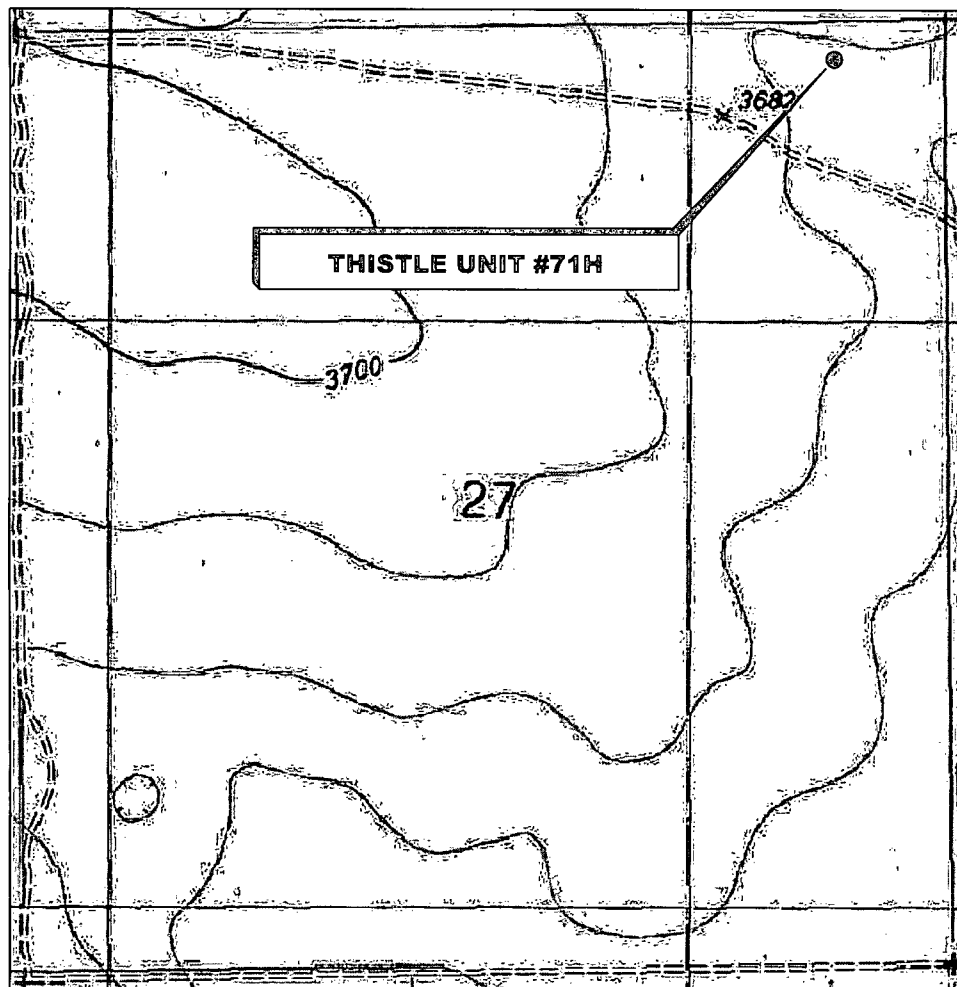
No allowable will be assigned to this completion until all interest have been consolidated or a non-standard unit has been approved by the division.

¹⁶ GEODETIC DATA NAD 83 GRID - NM EAST SURFACE LOCATION N 467338.2 - E 782269.6 LAT: 32.28238022° N LONG: 103.55371456° W BOTTOM HOLE LOCATION N 462589.0 - E 782304.9 LAT: 32.26932568° N LONG: 103.55371215° W CORNER DATA NAD 83 GRID - NM EAST A: FOUND 1/2" REBAR N:462234.1 - E:777659.3 B: FOUND BRASS CAP 1918 N 464871.0 - E 777639.0 C: FOUND NAIL N 467512.3 - E 777619.1 D: FOUND BRASS CAP 1918 N 467527.2 - E 780259.9 E: FOUND BRASS CAP 1918 N 467541.7 - E 782900.1 F: FOUND BRASS CAP 1918 N 464914.6 - E 782919.6 G: FOUND 1/2" IRON ROD N 462262.4 - E 782939.3		¹⁷ OPERATOR CERTIFICATION I hereby certify that the information contained herein is true and complete to the best of my knowledge and belief, and that this organization either owns a working interest or unleased mineral interest in the land including the proposed bottom hole location or has a right to drill this well at this location pursuant to a contract with an owner of such a mineral or working interest, or to a voluntary pooling agreement or a compulsory pooling order heretofore entered by the division. Signature: <i>Trina C. Couch</i> Date: 2/4/15 Trina C. Couch, Regulatory Analyst Printed Name trina.couch@dmn.com E-mail Address	
¹⁸ SURVEYOR CERTIFICATION I hereby certify that the well location shown on this plat was plotted from field notes of actual surveys made by me or under my supervision, and that the same is true and correct to the best of my belief. 12/10/14 Date of Survey Signature and Seal of Professional Surveyor 20451 Certificate Number			

RRC - Firm No.: TX 10193838 NM 4655451 - Job No.: LS140527

FEB 06 2015

LOCATION VERIFICATION MAP



*SECTION 27, TWP. 23 SOUTH, RGE. 33 EAST,
N. M. P. M., LEA CO., NEW MEXICO*

OPERATOR: Devon Energy
Production Company, L. P.
LEASE: Thistle Unit
WELL NO.: 71H
ELEVATION: 3681'

LOCATION: 200' FNL & 632' FEL
CONTOUR INTERVAL: 10'
USGS TOPO. SOURCE MAP:
Tip Top Wells, NM (1984)

Firm No.: TX 10193838 NM 4655451

Copyright 2014 - All Rights Reserved

NO.	REVISION	DATE
JOB NO.:	LS140527	
DWG. NO.:	140527LVM	

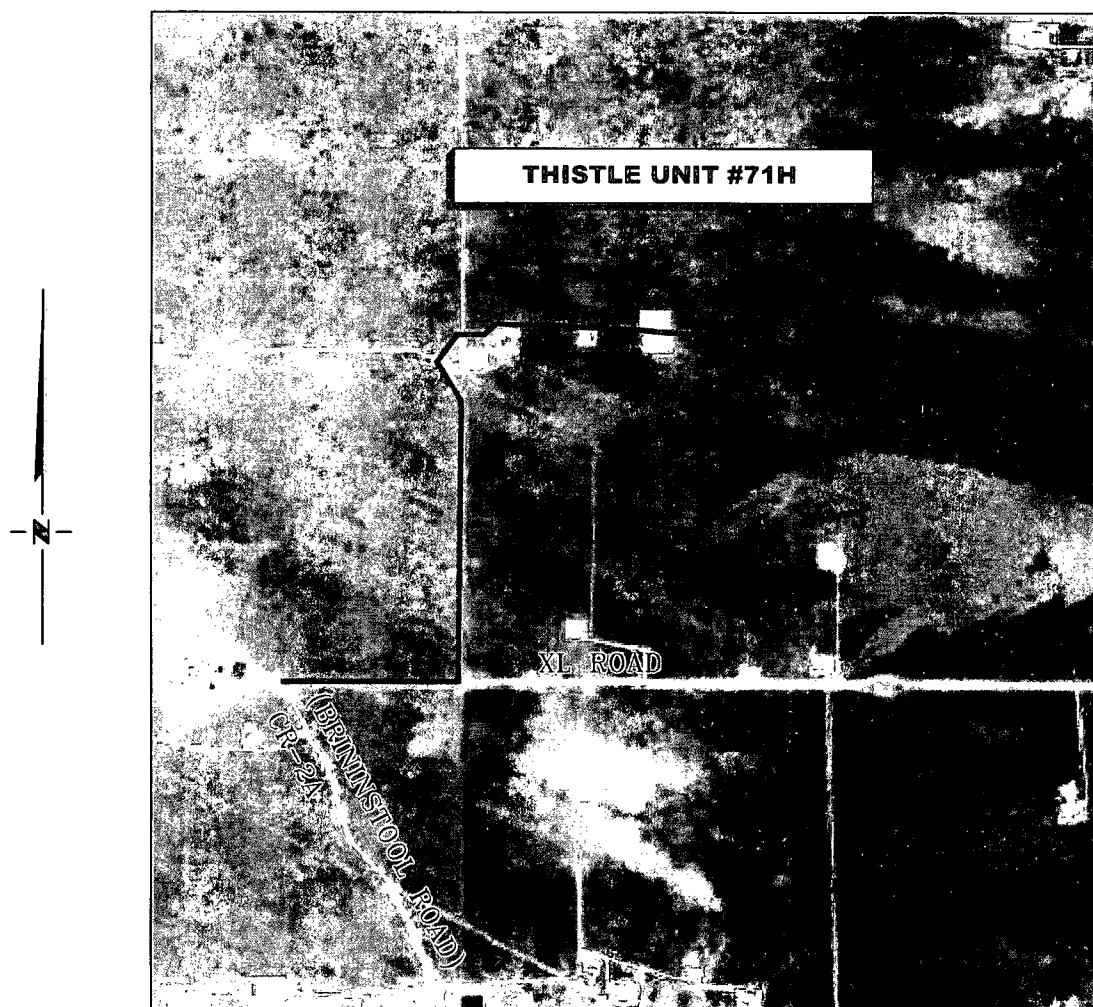
RRC

308 W. BROADWAY ST., HOBBS, NM 88240 (575) 964-8200

SCALE: 1"=1000'
DATE: 12/10/14
SURVEYED BY: GB
DRAWN BY: JC
APPROVED BY: REB
SHEET : 1 OF 5

VICINITY MAP

NOT TO SCALE



*SECTION 27, TWP. 23 SOUTH, RGE. 33 EAST,
N. M. P. M., LEA CO., NEW MEXICO*

OPERATOR: Devon Energy
Production Company, L. P.

LOCATION: 200' FNL & 632' FEL
ELEVATION: 3681'

LEASE: Thistle Unit
WELL NO.: 71H

Firm No.: TX 10193838 NM 4655451

Copyright 2014 - All Rights Reserved

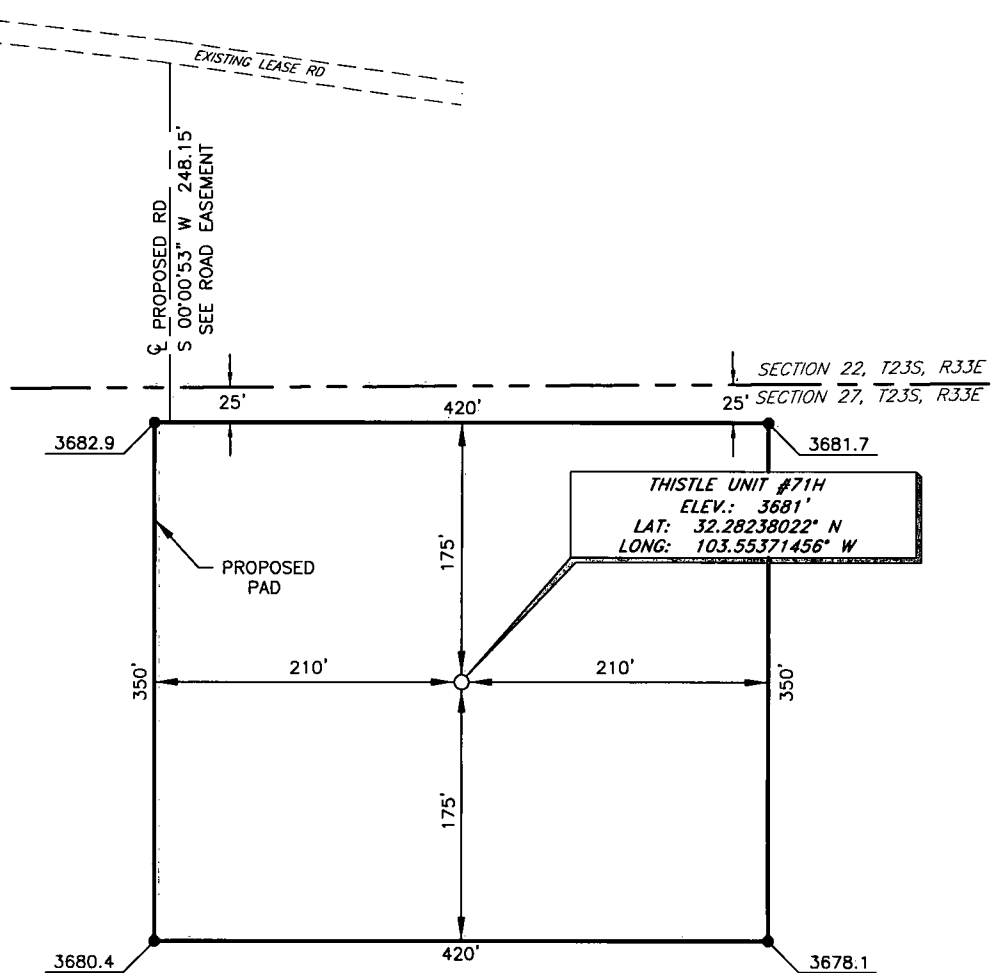
NO.	REVISION	DATE
JOB NO.: LS140527		
DWG. NO.: 1404527VM		

RRC

308 W. BROADWAY ST., HOBBS, NM 88240 (575) 964-8200

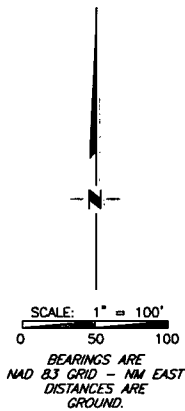
SCALE: NTS
DATE: 12/10/14
SURVEYED BY: GB
DRAWN BY: JC
APPROVED BY: REB
SHEET : 2 OF 5

DEVON ENERGY PRODUCTION COMPANY, L. P.
 THISTLE UNIT #71H
 (200' FNL & 632' FEL)
 SECTION 27, T23S, R33E
 N. M. P. M., LEA CO., NEW MEXICO



DIRECTIONS TO LOCATION

From the intersection of XL Road and CR 2-A (Brininstool Rd);
 Go East on XL Road for approx. 0.5 miles to a lease road on the left;
 Turn left on lease road and go North turning Northwest approx. 1.0 miles;
 Turn right on a lease road and go Northeast approx. 0.1 miles;
 Turn right on a lease road and go east approx. 0.9 miles;
 Location is 377' South of the Lease road.



Firm No.: TX 10193838 NM 4655451

Copyright 2014 - All Rights Reserved

NO.	REVISION	DATE
JOB NO.:	LS140527	
DWG. NO.:	140527PAD	

RRC

308 W. BROADWAY ST., HOBBS, NM 88240 (575) 964-8200

SCALE: 1" = 100'
DATE: 12-10-14
SURVEYED BY: GB
DRAWN BY: JC
APPROVED BY: REB
SHEET : 3 OF 5

LEGEND


() RECORD DATA - GLO

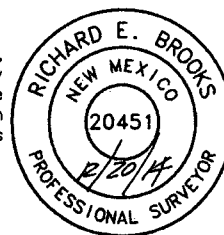
◆ FOUND MONUMENT
AS NOTED

———— PROPOSED ROAD

—E— OVERHEAD UTILITIES

—H— EXISTING BPL


 Richard E Brooks NM PS 20451



Firm No.: TX 10193838 NM 4655451

Copyright 2014 - All Rights Reserved

NO.	REVISION	DATE
JOB NO.: LS140527		
DWG. NO.: 140527_RD		

RRC

308 W. BROADWAY ST., HOBBS, NM 88240 (575) 964-8200

SCALE: 1" = 1000'
DATE: 12/10/14
SURVEYED BY: GB
DRAWN BY: JC
APPROVED BY: REB
SHEET : 4 of 5

**DEVON ENERGY PRODUCTION, L. P.
PROPOSED ROAD EASEMENT FROM
EXISTING LEASE ROAD TO THE
THISTLE UNIT #71H
SECTION 27, T23S, R33E
N. M. P. M., LEA CO., NEW MEXICO**

DESCRIPTION

A strip of land 20 feet wide, being 248.15 feet or 15.039 rods in length lying in Section 22 and Section 27, Township 23 South, Range 33 East, N. M. P. M., Lea County, New Mexico, being 10 feet left and 10 feet right of the following described survey of a centerline of which the sidelines shall be extended or shortened to intersect the South line of an existing lease road and the Northerly line of the Thistle Unit #71H pad, across State of New Mexico Land

BEGINNING at Engineering Station 0+00, a point which bears S 18°26'15" W, a distance of 2,557.65 feet from a brass cap, stamped "1918", found at the West Quarter Corner of Section 22;

Thence S 00°00'53" W, a distance of 248.15 feet to Engineering Station 2+48.15, to End of Survey, a point which bears S 89°33'30" E, a distance of 1,810.17 feet from a brass cap, stamped "1918", found at the South Quarter Corner of Section 22.

Said strip of land contains 0.114 acres, more or less, and is allocated by forties (Quarter/Quarters) as follows:

SE 1/4 SE 1/4	13.524 Rods	0.102 Acres+-
NE 1/4 NE 1/4	1.515 Rods	0.012 Acres+-

Firm No.: TX 10193838 NM 4655451

Copyright 2014 - All Rights Reserved

<div style="text-align: center;">  <p>RRC</p> </div>			SCALE: 1" = 1000'
			DATE: 12/10/14
			SURVEYED BY: GB
			DRAWN BY: JC
			APPROVED BY: REB
NO.	REVISION	DATE	SHEET : 5 OF 5
JOB NO.: LS140527			
DWG. NO.: 140527_RD			

308 W. BROADWAY ST., HOBBS, NM 88240 (575) 964-8200