

District I
1625 N. French Dr., Hobbs, NM 88240
Phone: (575) 393-6161 Fax: (575) 393-0720
District II
811 S. First St., Artesia, NM 88210
Phone: (575) 748-1283 Fax: (575) 748-9720
District III
1000 Rio Brazos Road, Aztec, NM 87410
Phone: (505) 334-6178 Fax: (505) 334-6170
District IV
1220 S. St. Francis Dr., Santa Fe, NM 87505
Phone: (505) 476-3460 Fax: (505) 476-3462

State of New Mexico
Energy, Minerals & Natural Resources Department
OIL CONSERVATION DIVISION
1220 South St. Francis Dr. Santa Fe, NM 87505
FEB 05 2015

Form C-102
Revised August 1, 2011
Submit one copy to appropriate
District Office


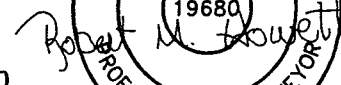
☐ AMENDED REPORT

RECEIVED

WELL LOCATION AND ACREAGE DEDICATION PLAT

1 API Number 30-025-42426		2 Pool Code 97727		3 Pool Name WC-025 G-03 5173308N; Y450	
4 Property Code 314182		5 Property Name PETRUS D STATE			
7 OGRID NO. 229137		8 Operator Name COG OPERATING, LLC			
9 Elevation 4224'					
10 Surface Location					
UL or lot no. P	Section 6	Township 17S	Range 33E	Lot Idn	Feet from the 330
		North/South line SOUTH		Feet From the 150	East/West line EAST
		County LEA			
11 Bottom Hole Location If Different From Surface					
UL or lot no. M	Section 6	Township 17S	Range 33E	Lot Idn	Feet from the 330
		North/South line SOUTH		Feet from the 330	East/West line WEST
		County LEA			
12 Dedicated Acres 161.15		13 Joint or Infill		14 Consolidation Code	
				15 Order No.	

No allowable will be assigned to this completion until all interest have been consolidated or a non-standard unit has been approved by the division.

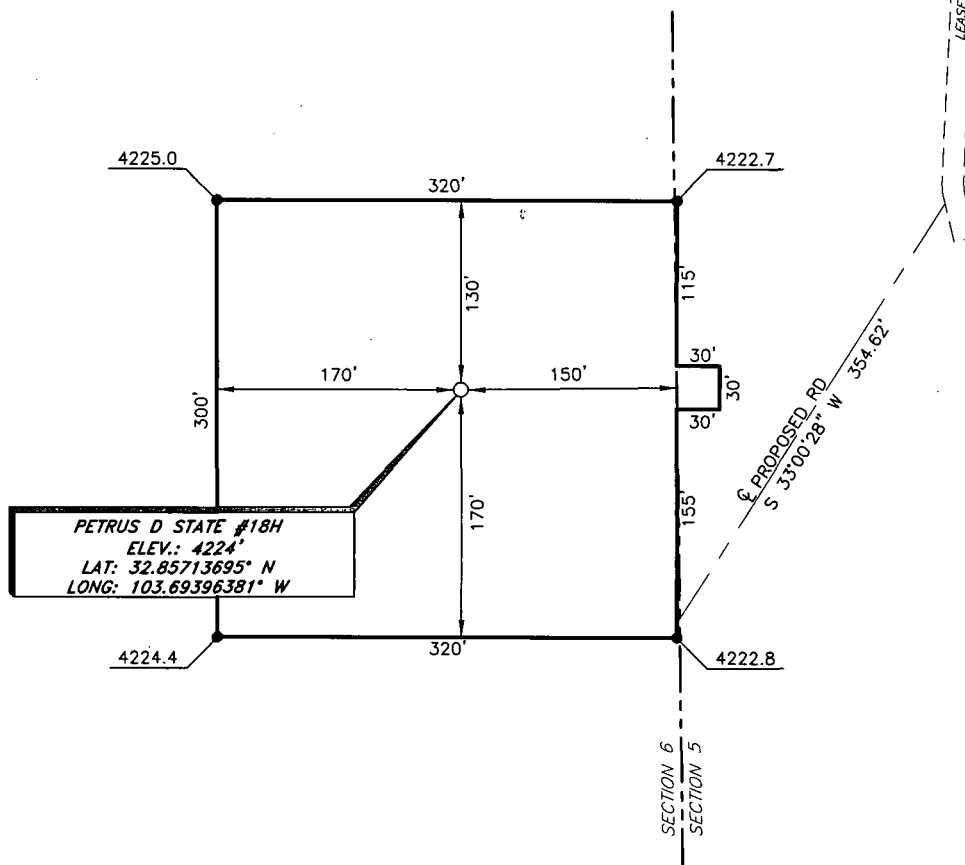
<p>16</p> <p>LOT 4</p> <p>LOT 3</p> <p>LOT 2</p> <p>LOT 1</p> <p>LOT 5</p> <p>LOT 6</p> <p>LOT 7</p> <p>Project Area</p> <p>Producing Area</p> <p>S 89°26'04" W (GRID)</p> <p>4840.76' (HORIZ.)</p> <p>RRC - Firm No.: TX 10193838 NM 4655451/ - Job No.: LS140489</p>		<p>GEODETIC DATA</p> <p>NAD 27 GRID - NM EAST</p> <p>SURFACE LOCATION</p> <p>N 676132.1 - E 696337.0</p> <p>LAT: 32.85713695° N</p> <p>LONG: 103.69396381° W</p> <p>BOTTOM HOLE LOCATION</p> <p>N 676084.3 - E 691497.6</p> <p>CORNER DATA</p> <p>NAD 83 GRID - NM EAST</p> <p>1: CALCULATED CORNER</p> <p>N 677123.0 - E 696475.1</p> <p>2: CALCULATED CORNER</p> <p>N 677071.4 - E 691161.5</p> <p>A: FOUND 1" IRON PIPE</p> <p>N 675751.1 - E 691169.7</p> <p>B: FOUND BRASS CAP "1913"</p> <p>N 678391.9 - E 691153.3</p> <p>C: FOUND 1/4" NAIL</p> <p>N 681032.0 - E 691137.7</p> <p>D: FOUND BRASS CAP "1913"</p> <p>N 681057.4 - E 693786.6</p> <p>E: FOUND BRASS CAP "1913"</p> <p>N 681081.6 - E 696427.5</p> <p>F: FOUND BRASS CAP "1913"</p> <p>N 678442.3 - E 696459.2</p> <p>G: FOUND BRASS CAP "1913"</p> <p>N 675803.7 - E 696490.9</p> <p>H: FOUND BRASS CAP "1913"</p> <p>N 675777.4 - E 693851.8</p>	<p>17 OPERATOR CERTIFICATION</p> <p>I hereby certify that the information contained herein is true and complete to the best of my knowledge and belief, and that this organization either owns a working interest or unleased mineral interest in the land including the proposed bottom hole location or has a right to drill this well at this location pursuant to a contract with an owner of such a mineral or working interest, or to a voluntary pooling agreement or a compulsory pooling order heretofore entered by the division.</p> <p>Signature: </p> <p>Date: 2-5-15</p> <p>Printed Name: Kelly J. Holly</p> <p>E-mail Address: kholly@concho.com</p> <p>18 SURVEYOR CERTIFICATION</p> <p>I hereby certify that the well location shown on this plat was plotted from field notes of actual surveys made by me or under my supervision, and that the same is true and correct to the best of my belief.</p> <p>Date of Survey: 11-3-14</p> <p>Signature and Seal of Professional Surveyor: </p> <p>19680</p> <p>Certificate Number</p>
--	--	--	--

Estimated
Completed
Interval:
337 FSL 330 FSL

FEB 05 2015
6

COG OPERATING, LLC

PETRUS D STATE #18H
(330' FSL & 150' FEL)
SECTION 6, T17S, R33E
N. M. P. M., LEA CO., NEW MEXICO



PETRUS D STATE #18H
ELEV.: 4224'
LAT: 32.85713695° N
LONG: 103.69396381° W

DIRECTIONS TO LOCATION

From the intersection of U.S. Hwy. 82 and Mendel Road CR-121
Go East on U. S. Hwy 82 approx. 1.6 miles;

Turn right on lease road go South for approx. 1.2 miles;

Turn left and go East for approx. 0.4 miles;

Turn right and go South for approx. 0.8 miles;

Location is approx. 370 feet Southwest of lease road.

SCALE: 1" = 100'
0 50 100
BEARINGS ARE
NAD 27 GRID - NM EAST
DISTANCES ARE
GROUND.

Firm No.: TX 10193838 NM 4555451

Copyright 2014 - All Rights Reserved

NO.	REVISION	DATE
JOB NO.: LS140489		
DWG. NO.: 140489PAD		

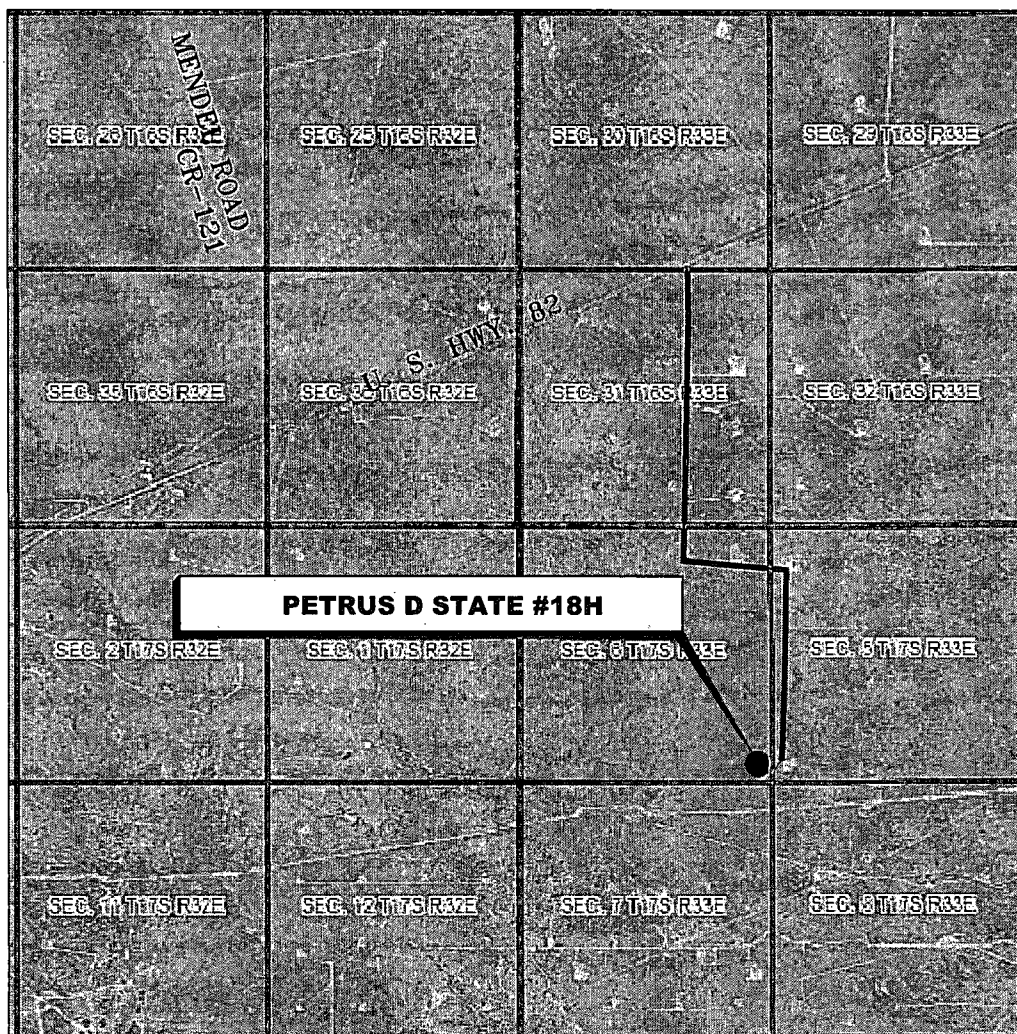
RRC

308 W. BROADWAY ST., HOBBS, NM 88240 (575) 964-8200

SCALE: 1" = 100'
DATE: 11-3-14
SURVEYED BY: GB/ML
DRAWN BY: JC
APPROVED BY: RMH
SHEET : 1 OF 1

VICINITY MAP

NOT TO SCALE



*SECTION 6, TWP. 17 SOUTH, RGE. 33 EAST,
N. M. P. M., LEA COUNTY, NEW MEXICO*

OPERATOR: COG Operating, LLC
LEASE: Petrus D State
WELL NO.: 18H

LOCATION: 330' FSL & 150' FEL
ELEVATION: 4224'

Firm No.: TX 10193838 NM 4655451

Copyright 2014 - All Rights Reserved

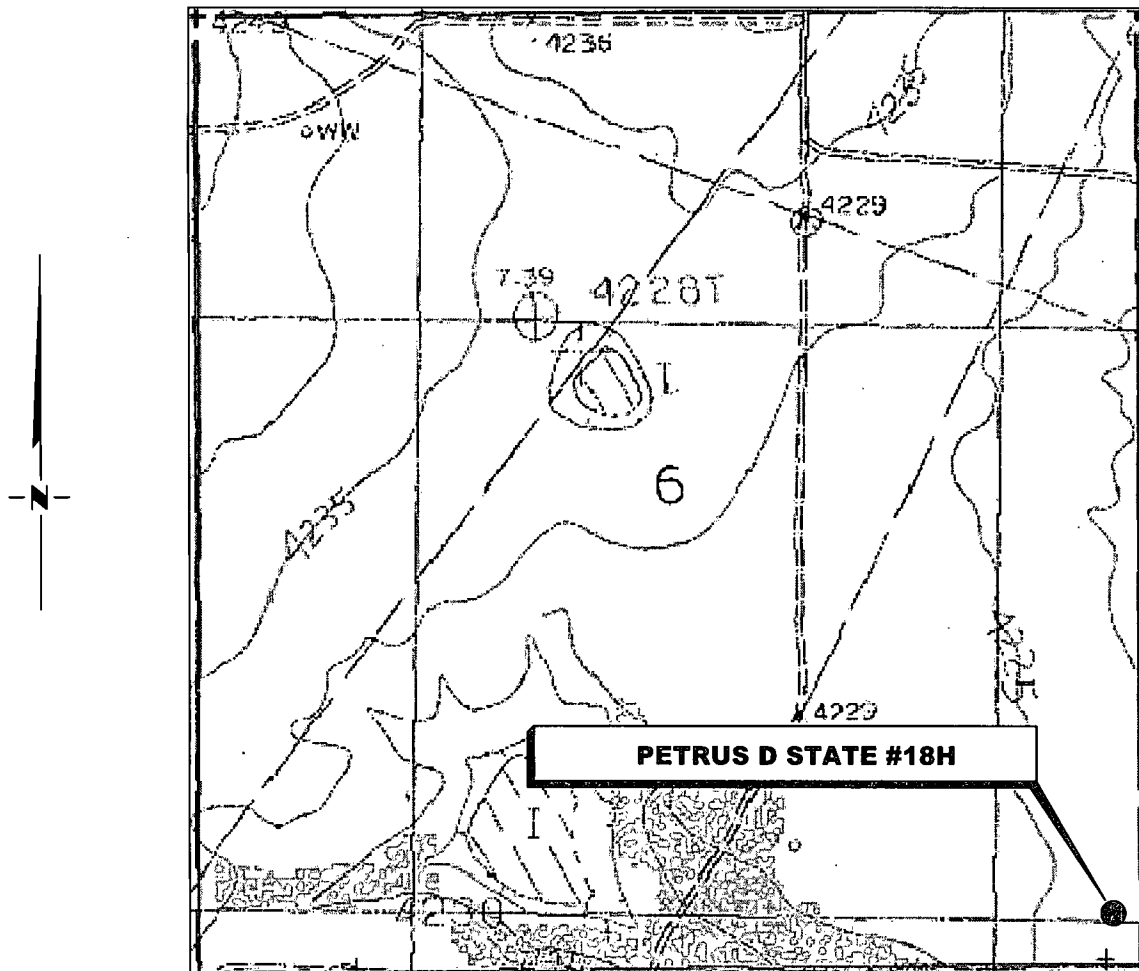
NO.	REVISION	DATE
JOB NO.: LS140489		
DWG. NO.: 140489VM		

RRC

308 W. BROADWAY ST., HOBBS, NM 88240 (575) 964-8200

SCALE: N.T.S.
DATE: 11-7-14
SURVEYED BY: GB/ML
DRAWN BY: JC
APPROVED BY: RMH
SHEET : 1 OF 1

LOCATION VERIFICATION MAP



*SECTION 6, TWP. 17 SOUTH, RGE. 33 EAST,
N. M. P. M., LEA COUNTY, NEW MEXICO*

OPERATOR: COG Operating, LLC
LEASE: Petrus D State
WELL NO.: 18H
ELEVATION: 4224'

LOCATION: 330' FSL & 150' FEL
CONTOUR INTERVAL: 10'
USGS TOPO. SOURCE MAP:
Dog Lake, NM (P. E. 1985)

Firm No.: TX 10193838 NM 4655451

Copyright 2014 - All Rights Reserved

NO.	REVISION	DATE
JOB NO.:	LS140489	
DWG. NO.:	140489LVM	

RRC

308 W. BROADWAY ST., HOBBS, NM 88240 (575) 964-8200

SCALE: N.T.S.
DATE: 11-3-14
SURVEYED BY: GB/ML
DRAWN BY: JC
APPROVED BY: RMH
SHEET : 1 OF 1