

District I  
1625 N. French Dr., Hobbs, NM 88240  
Phone: (575) 393-6161 Fax: (575) 393-0720  
District II  
811 S. First St., Artesia, NM 88210  
Phone: (575) 748-1283 Fax: (575) 748-9720  
District III  
1000 Rio Brazos Road, Aztec, NM 87410  
Phone: (505) 334-6178 Fax: (505) 334-6170  
District IV  
1220 S. St. Francis Dr., Santa Fe, NM 87505  
Phone: (505) 476-3460 Fax: (505) 476-3462

State of New Mexico  
Energy, Minerals & Natural Resources Department  
OIL CONSERVATION DIVISION  
1220 South St. Francis Dr.  
Santa Fe, NM 87505

Form C-102  
Revised August 1, 2011  
Submit one copy to appropriate  
District Office

☐ AMENDED REPORT

WELL LOCATION AND ACREAGE DEDICATION PLAT

<sup>1</sup> API Number <b>30-025-42427</b>		<sup>2</sup> Pool Code <b>97784</b>		<sup>3</sup> Pool Name <b>Wildcat; Bone Spring WC025 G-06 S2532201M</b>	
<sup>4</sup> Property Code <b>39747</b>		<sup>5</sup> Property Name <b>BELL LAKE 19 STATE</b>			<sup>6</sup> Well Number <b>5H</b>
<sup>7</sup> GRID NO.		<sup>8</sup> Operator Name <b>DEVON ENERGY PRODUCTION COMPANY, L. P.</b>			<sup>9</sup> Elevation <b>3547'</b>
<sup>10</sup> Surface Location					
UL or lot no. <b>0</b>	Section <b>19</b>	Township <b>24S</b>	Range <b>33E</b>	Lot Idn	Feet from the <b>200</b>
		North/South line <b>SOUTH</b>		Feet From the <b>1770</b>	East/West line <b>EAST</b>
				County <b>LEA</b>	
<sup>11</sup> Bottom Hole Location If Different From Surface					
UL or lot no. <b>B</b>	Section <b>19</b>	Township <b>24S</b>	Range <b>33E</b>	Lot Idn	Feet from the <b>330</b>
		North/South line <b>NORTH</b>		Feet from the <b>1770</b>	East/West line <b>EAST</b>
				County <b>LEA</b>	
<sup>12</sup> Dedicated Acres <b>160 ac</b>	<sup>13</sup> Joint or Infill	<sup>14</sup> Consolidation Code	<sup>15</sup> Order No.		

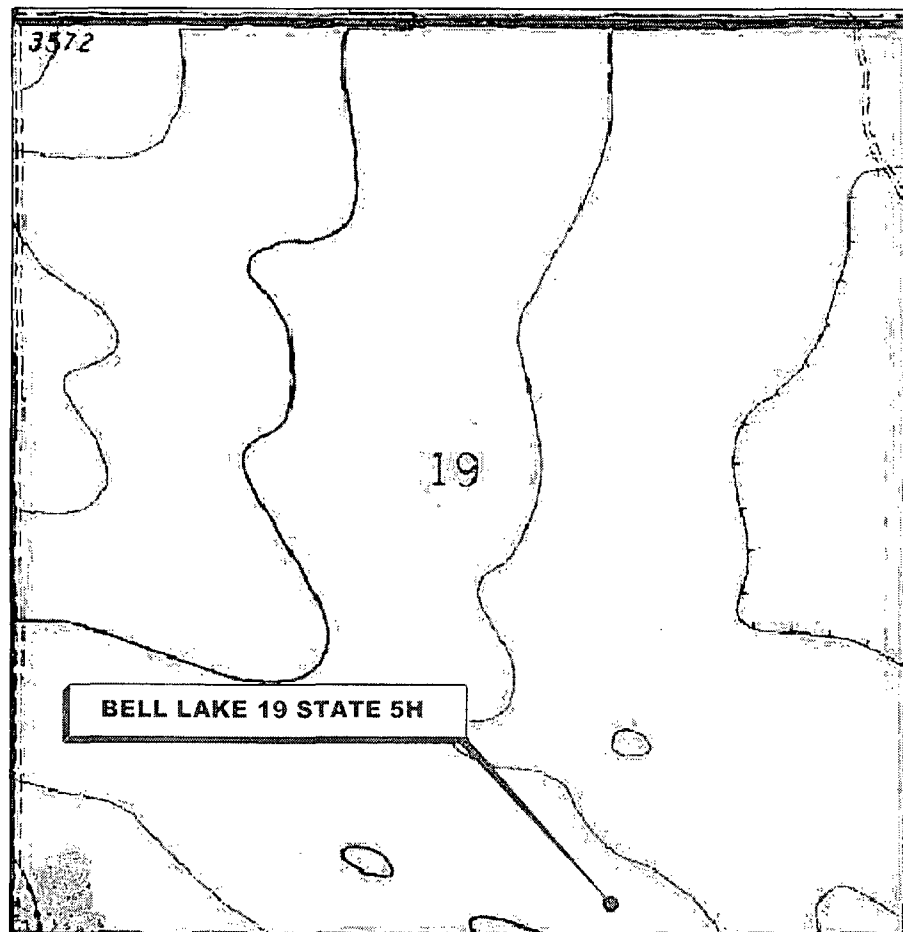
No allowable will be assigned to this completion until all interest have been consolidated or a non-standard unit has been approved by the division.

<sup>16</sup> <b>GEODETIC DATA</b> NAD 83 GRID - NM EAST <b>Lot 1</b> <b>SURFACE LOCATION</b> N 435963.9 - E 765523.8 LAT: 32.19646523° N LONG: 103.60858272° W <b>BOTTOM HOLE LOCATION</b> N 440713.0 - E 765485.6 LAT: 32.20951972° N LONG: 103.60860275° W <b>Lot 2</b> <b>CORNER DATA</b> NAD 83 GRID - NM EAST A: FOUND BRASS CAP 1913 N 435739.7 - E 762046.8 B: FOUND BRASS CAP 1913 N 438380.3 - E 762032.2 C: CALCULATED CORNER N 441020.9 - E 762016.7 <b>Lot 3</b> D: CALCULATED CORNER N 441054.3 - E 767252.8 E: FOUND BRASS CAP 1913 N 438414.7 - E 767274.6 F: FOUND BRASS CAP 1913 N 435777.3 - E 767295.3 G: FOUND BRASS CAP 1913 N 435757.3 - E 764655.0 <b>Lot 4</b>		<sup>17</sup> <b>OPERATOR CERTIFICATION</b> I hereby certify that the information contained herein is true and complete to the best of my knowledge and belief, and that this organization either owns a working interest or unleased mineral interest in the land including the proposed bottom hole location or has a right to drill this well at this location pursuant to a contract with an owner of such a mineral or working interest, or to a voluntary pooling agreement or a compulsory pooling order heretofore entered by the division. <i>Trina C. Couch</i> 2/4/15 Signature Date Trina C. Couch, Regulatory Analyst Printed Name trina.couch@dmv.com E-mail Address
<sup>18</sup> <b>SURVEYOR CERTIFICATION</b> I hereby certify that the well location shown on this plat was plotted from field notes of actual surveys made by me or under my supervision, and that the same is true and correct to the best of my belief. <b>12-3-14</b> Date of Survey <i>Richard E. Brooks</i> Signature and Seal of Professional Surveyor <b>20451</b> Certificate Number		

RRC - Firm No.: TX 10193838 NM 4655451 - Job No.: LS140528

FEB 06 2015

# LOCATION VERIFICATION MAP



*SECTION 19, TWP. 24 SOUTH, RGE. 33 EAST,  
N. M. P. M., LEA CO., NEW MEXICO*

OPERATOR: Devon Energy  
Production Company, L. P.  
LEASE: Bell Lake 19 State  
WELL NO.: 5H  
ELEVATION: 3547'

LOCATION: 200' FSL & 1770' FEL  
CONTOUR INTERVAL: 10'  
USGS TOPO. SOURCE MAP:  
Bell Lake, NM (1973)

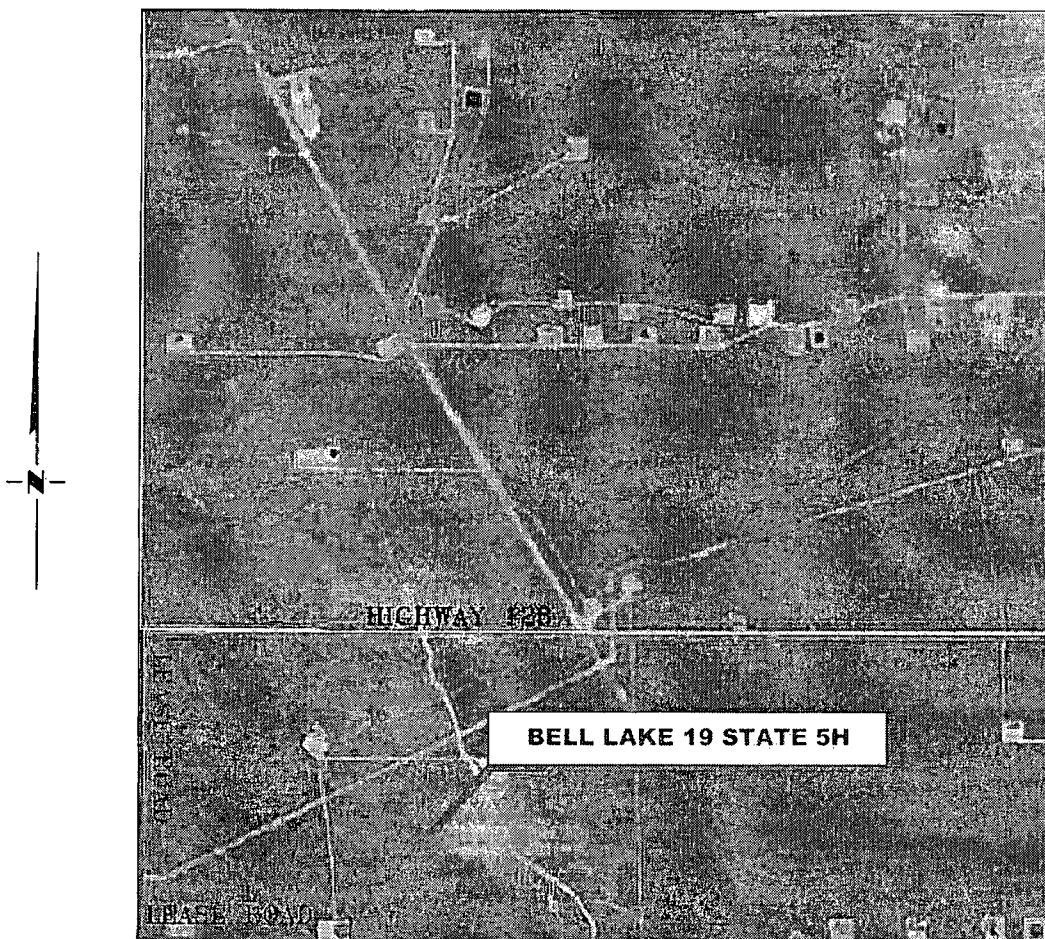
Firm No.: TX 10193838 NM 4655451

Copyright 2014 - All Rights Reserved

<div style="text-align: center;"> <h2>RRC</h2> <p>308 W. BROADWAY ST., HOBBS, NM 88240 (575) 964-8200</p> </div>			SCALE: 1"=1000'
			DATE: 12-3-14
			SURVEYED BY: GB
			DRAWN BY: JC
NO.	REVISION	DATE	APPROVED BY: REB
JOB NO.: LS140528			SHEET : 1 OF 3
DWG. NO.: 140528LVM			

# VICINITY MAP

NOT TO SCALE



*SECTION 19, TWP. 24 SOUTH, RGE. 33 EAST,  
N. M. P. M., LEA CO., NEW MEXICO*

OPERATOR: Devon Energy  
Production Company, L. P.

LOCATION: 200' FSL & 1770' FEL  
ELEVATION: 3547'

LEASE: Bell Lake 19 State  
WELL NO.: 5H

Firm No.: TX 10193838 NM 4655451

Copyright 2014 - All Rights Reserved

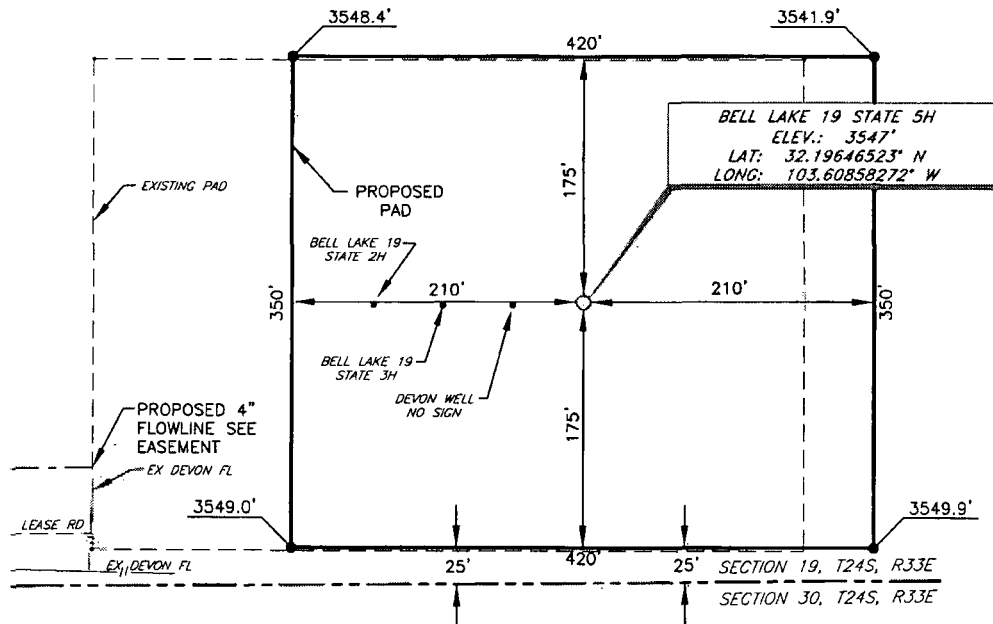
NO.	REVISION	DATE
JOB NO.:	LS140528	
DWG. NO.:	140528VM	

# RRC

308 W. BROADWAY ST., HOBBS, NM 88240 (575) 964-8200

SCALE: NTS
DATE: 12-3-14
SURVEYED BY: GB
DRAWN BY: JC
APPROVED BY: REB
SHEET : 2 OF 3

DEVON ENERGY PRODUCTION COMPANY, L. P.  
 BELL LAKE 19 STATE 5H  
 (200' FSL & 1770' FEL)  
 SECTION 19, T24S, R33E  
 N. M. P. M., LEA CO., NEW MEXICO



DIRECTIONS TO LOCATION

Beginning at a point which is approximately 3.0 miles west of the intersection of Hwy. 128 and CR 2-A (Brininstool Rd);  
 Go south along an existing lease road approximately 1.0 miles turning left onto the lease road along the South line of Section 19;  
 Go east approximately 0.6 miles to the Bell Lake 19 State 3H.  
 Location is approximately 100 feet east of the existing Devon well.

SCALE: 1" = 100'  
 0 50 100  
 BEARINGS ARE  
 NAD 83 GRID - NM EAST  
 DISTANCES ARE  
 GROUND.

Firm No.: TX 10193838 NM 4655451

Copyright 2014 - All Rights Reserved

NO.	REVISION	DATE
JOB NO.:	LS140528	
DWG. NO.:	140528PAD	

**RRC**

308 W. BROADWAY ST., HOBBS, NM 88240 (575) 964-8200

SCALE: 1" = 100'
DATE: 12-3-14
SURVEYED BY: GB
DRAWN BY: JC
APPROVED BY: REB
SHEET : 3 OF 3