

District I
1625 N. French Dr., Hobbs, NM 88240
Phone: (575) 393-6161 Fax: (575) 393-0720
District II
811 S. First St., Artesia, NM 88210
Phone: (575) 748-1253 Fax: (575) 748-9720
District III
1000 Rio Brazos Road, Aztec, NM 87410
Phone: (505) 334-6175 Fax: (505) 334-6170
District IV
1220 S. St. Francis Dr., Santa Fe, NM 87505
Phone: (505) 476-3460 Fax: (505) 476-3462

State of New Mexico
Energy, Minerals & Natural Resources Department
OIL CONSERVATION DIVISION
1220 South St. Francis Dr.
Santa Fe, NM 87505

Form C-102
Revised August 1, 2011
Submit one copy to appropriate
District Office

FEB 12 2015

☐ AMENDED REPORT

WELL LOCATION AND ACREAGE DEDICATION

¹ API Number 30-025-27916	² Pool Code 97088	³ Pool Name Wildcat Bone Spring
⁴ Property Code 306933 313614	⁵ Property Name JAZZBASS 34 FEDERAL	⁶ Well Number 3H
⁷ OGRID No. 13837	⁸ Operator Name ENDURANCE RESOURCES, LLC	⁹ Elevation 3171.0

¹⁰ Surface Location

U.I. or lot no.	Section	Township	Range	Lot Idn	Feet from the	North/South line	Feet from the	East/West line	County
O	34	25 S	35 E		660	SOUTH	1980	EAST	LEA

¹¹ Bottom Hole Location If Different From Surface

U.I. or lot no.	Section	Township	Range	Lot Idn	Feet from the	North/South line	Feet from the	East/West line	County
B	34	25 S	35 E		330	NORTH	1980	EAST	LEA

¹² Dedicated Acres 160	¹³ Joint or Infill	¹⁴ Consolidation Code	¹⁵ Order No.
--------------------------------------	-------------------------------	----------------------------------	-------------------------

No allowable will be assigned to this completion until all interests have been consolidated or a non-standard unit has been approved by the division.

<p>N89°34'14"E 2644.71 FT</p> <p>NW CORNER SEC. 34 LAT. = 32.0940931°N LONG. = 103.3639285°W</p> <p>NMSP EAST (FT) N = 399317.25 E = 841540.43</p> <p>NOTE: LATITUDE AND LONGITUDE COORDINATES ARE SHOWN USING THE NORTH AMERICAN DATUM OF 1983 (NAD83). LISTED NEW MEXICO STATE PLANE EAST COORDINATES ARE GRID (NAD83). BASIS OF BEARING AND DISTANCES USED ARE NEW MEXICO STATE PLANE EAST COORDINATES MODIFIED TO THE SURFACE.</p> <p>W O CORNER SEC. 34 LAT. = 32.0868372°N LONG. = 103.3639303°W</p> <p>NMSP EAST (FT) N = 396677.57 E = 841563.59</p> <p>SW CORNER SEC. 34 LAT. = 32.0795817°N LONG. = 103.3639234°W</p> <p>NMSP EAST (FT) N = 394038.09 E = 841589.44</p> <p>S89°31'07"W 2643.47 FT</p>		<p>N89°35'47"E 2641.98 FT</p> <p>N O CORNER SEC. 34 LAT. = 32.0940819°N LONG. = 103.3533902°W</p> <p>NMSP EAST (FT) N = 399387.07 E = 844184.70</p> <p>NE CORNER SEC. 34 LAT. = 32.0940869°N LONG. = 103.3468607°W</p> <p>NMSP EAST (FT) N = 399355.67 E = 846826.26</p> <p>E O CORNER SEC. 34 LAT. = 32.0868111°N LONG. = 103.3468615°W</p> <p>NMSP EAST (FT) N = 396716.03 E = 846850.15</p> <p>SE CORNER SEC. 34 LAT. = 32.0795707°N LONG. = 103.3468695°W</p> <p>NMSP EAST (FT) N = 394081.95 E = 846871.75</p> <p>S89°31'47"W 2639.73 FT</p>	
<p>JAZZBASS 1" 34" FEDERAL #3H ELEV. = 3171.0' LAT. = 32.0813890°N (NAD83) LONG. = 103.3532606°W</p> <p>NMSP EAST (FT) N = 394725.43 E = 844886.19</p> <p>SURFACE LOCATION</p> <p>1980</p>		<p>BOTTOM OF HOLE</p> <p>LAT. = 32.0931716°N LONG. = 103.3532528°W</p> <p>NMSP EAST (FT) N = 399011.92 E = 844649.53</p> <p>1980</p>	

¹⁷ OPERATOR CERTIFICATION

I hereby certify that the information contained herein is true and complete to the best of my knowledge and belief, and that this organization either owns a working interest or unleased mineral interest in the land including the proposed bottom hole location or has a right to drill this well at this location pursuant to a contract with an owner of such a mineral or working interest, or to a voluntary pooling agreement or a compulsory pooling order heretofore entered by the division.

Signature: *M.A. Sizaro III* Date: 4-8-2014

Printed Name: M.A. Sizaro III

E-mail Address: MANU@ENDURANCE

RESOURCES, LLC

¹⁸ SURVEYOR CERTIFICATION

I hereby certify that the well location shown on this plat was plotted from field notes of actual surveys made by me or under my supervision, and that the same is true and correct to the best of my belief.

NOVEMBER 22, 2011
Date of Survey: 12/19/11

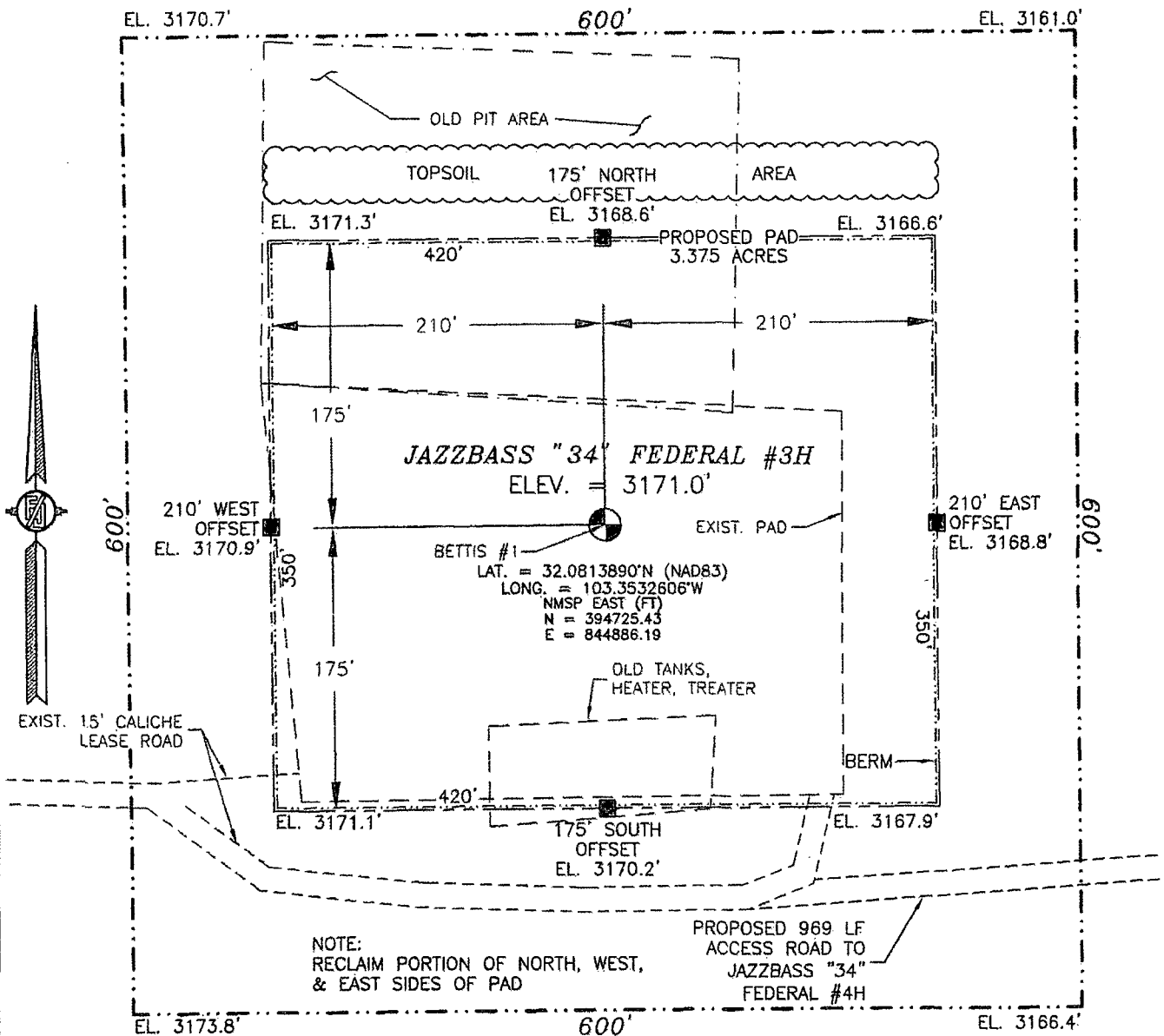
Signature and Seal of Professional Surveyor: *[Signature]*

Certificate Number: F1110N-PARAMILLO, PLS 12797
SURVEY NO. 2480

FEB 18 2015

SECTION 34, TOWNSHIP 25 SOUTH, RANGE 35 EAST, N.M.P.M.
LEA COUNTY, STATE OF NEW MEXICO
SITE MAP

NOTE: LATITUDE AND LONGITUDE COORDINATES ARE SHOWN USING THE NORTH AMERICAN DATUM OF 1983 (NAD83). LISTED NEW MEXICO STATE PLANE EAST COORDINATES ARE GRID (NAD83). BASIS OF BEARING AND DISTANCES USED ARE NEW MEXICO STATE PLANE EAST COORDINATES MODIFIED TO THE SURFACE



0 10 50 100 200

SCALE 1" = 100'

DIRECTIONS TO LOCATION

FROM THE INTERSECTION OF CR 2 (BATTLE AXE) AND EL PASO PIPELINE ROAD, GO EAST ON EL PASO PIPELINE ROAD FOR APPROX. 11.6 MILES, GO NORTH ON 10' CALICHE LEASE ROAD APPROX. 1.1 MILES. LOCATION IS A RE-ENTRY OF THE ENDURANCE BETTIS #1 WELL TO THE EAST APPROX. 300'.

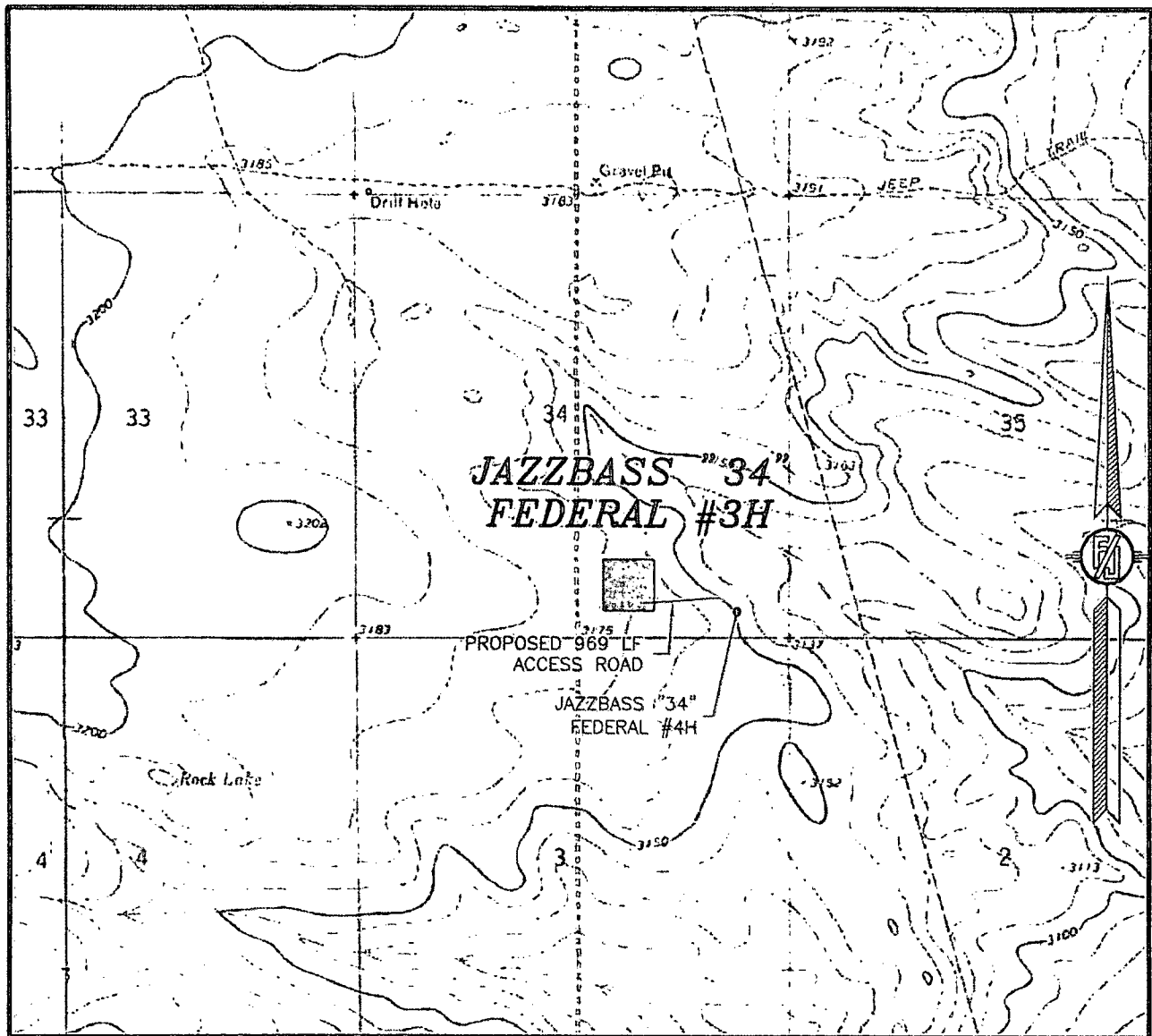
ENDURANCE RESOURCES, LLC
JAZZBASS "34" FEDERAL #3H
LOCATED 660 FT. FROM THE SOUTH LINE
AND 1980 FT. FROM THE EAST LINE OF
SECTION 34, TOWNSHIP 25 SOUTH,
RANGE 35 EAST, N.M.P.M.
LEA COUNTY, STATE OF NEW MEXICO

NOVEMBER 22, 2013

SURVEY NO. 2480

MADRON SURVEYING, INC. 301 SOUTH CANAL CARLSBAD, NEW MEXICO
(575) 234-3341

SECTION 34, TOWNSHIP 25 SOUTH, RANGE 35 EAST, N.M.P.M.
LEA COUNTY, STATE OF NEW MEXICO
LOCATION VERIFICATION MAP



USGS QUAD MAP:
JAVELINA BASIN

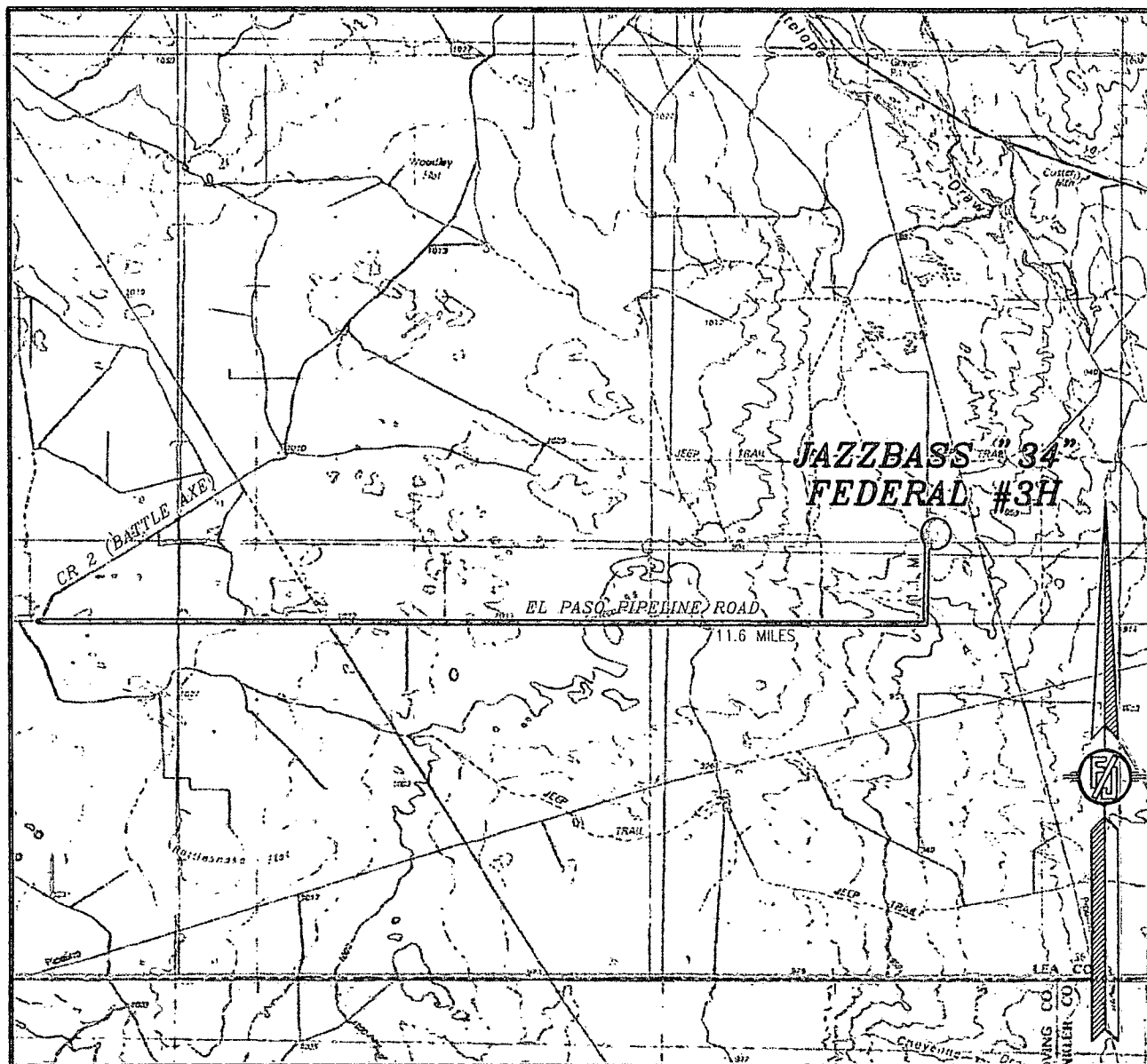
NOT TO SCALE

ENDURANCE RESOURCES, LLC
JAZZBASS "34" FEDERAL #3H
LOCATED 660 FT. FROM THE SOUTH LINE
AND 1980 FT. FROM THE EAST LINE OF
SECTION 34, TOWNSHIP 25 SOUTH,
RANGE 35 EAST, N.M.P.M.
LEA COUNTY, STATE OF NEW MEXICO

NOVEMBER 22, 2013

MADRON SURVEYING, INC. 301 SOUTH CANAL CARLSBAD, NEW MEXICO
(975) 234-3341 SURVEY NO. 2480

SECTION 34, TOWNSHIP 25 SOUTH, RANGE 35 EAST, N.M.P.M.
LEA COUNTY, STATE OF NEW MEXICO
VICINITY MAP



NOT TO SCALE

ENDURANCE RESOURCES, LLC
JAZZBASS "34" FEDERAL #3H
LOCATED 660 FT. FROM THE SOUTH LINE
AND 1980 FT. FROM THE EAST LINE OF
SECTION 34, TOWNSHIP 25 SOUTH,
RANGE 35 EAST, N.M.P.M.
LEA COUNTY, STATE OF NEW MEXICO

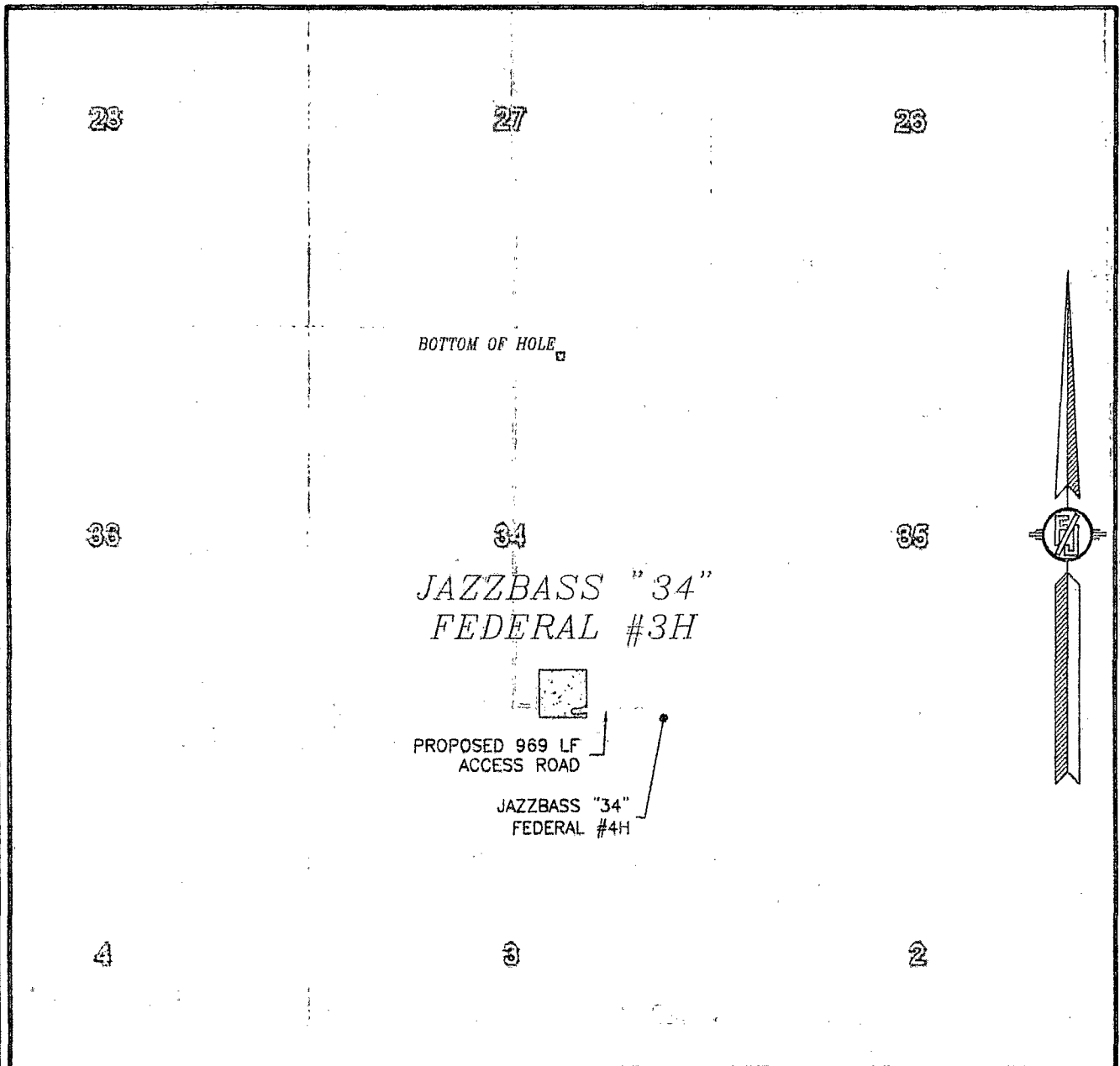
DIRECTIONS TO LOCATION

FROM THE INTERSECTION OF CR 2 (BATTLE AXE) AND EL PASO PIPELINE ROAD, GO EAST ON EL PASO PIPELINE ROAD FOR APPROX. 11.6 MILES. GO NORTH ON 10" CALICHE LEASE ROAD APPROX. 1.1 MILES. LOCATION IS A RE-ENTRY OF THE ENDURANCE BETTIS #1 WELL TO THE EAST APPROX. 300'.

NOVEMBER 22, 2013

MADRON SURVEYING, INC. 301 SOUTH CANAL (575) 234-3341 SURVEY NO. 2480 CARLSBAD, NEW MEXICO

SECTION 34, TOWNSHIP 25 SOUTH, RANGE 35 EAST, N.M.P.M.
LEA COUNTY, STATE OF NEW MEXICO
AERIAL PHOTO



NOT TO SCALE
AERIAL PHOTO:
GOOGLE EARTH
APRIL 2013

ENDURANCE RESOURCES, LLC
JAZZBASS "34" FEDERAL #3H
LOCATED 660 FT. FROM THE SOUTH LINE
AND 1980 FT. FROM THE EAST LINE OF
SECTION 34, TOWNSHIP 25 SOUTH,
RANGE 35 EAST, N.M.P.M.
LEA COUNTY, STATE OF NEW MEXICO

NOVEMBER 22, 2013

SURVEY NO. 2480

MADRON SURVEYING, INC. 301 SOUTH CANAL CARLSBAD, NEW MEXICO
(375) 234-3341