

Form C-102
Revised August 1, 2011
Submit one copy to appropriate
District Office
☐ AMENDED REPORT

WELL LOCATION AND ACREAGE DEDICATION RECEIVED

¹ API Number 30-025-42474	² Pool Code 7320	³ Pool Name BRINNINSTOOL; BONE SPRING
⁴ Property Code 314247	⁵ Property Name NORTH THISTLE 15-10 STATE COM	⁶ Well Number 1H
⁷ OGRID No. 6137	⁸ Operator Name DEVON ENERGY PRODUCTION COMPANY, L.P.	⁹ Elevation 3714.3

¹⁰ Surface Location

UL or lot no.	Section	Township	Range	Lot Idn	Feet from the	North/South line	Feet from the	East/West line	County
F	15	23 S	33 E		2632	NORTH	1982	WEST	LEA

¹¹ Bottom Hole Location If Different From Surface

UL or lot no.	Section	Township	Range	Lot Idn	Feet from the	North/South line	Feet from the	East/West line	County
C	10	23 S	33 E		330	NORTH	1732	WEST	LEA

¹² Dedicated Acres 240	¹³ Joint or Infill	¹⁴ Consolidation Code	¹⁵ Order No.
--------------------------------------	-------------------------------	----------------------------------	-------------------------

No allowable will be assigned to this completion until all interests have been consolidated or a non-standard unit has been approved by the division.

1st OPERATOR CERTIFICATION

I hereby certify that the information contained herein is true and correct to the best of my knowledge and belief, and that this organization either owns a working interest or unleased mineral interest in the land including the proposed bottom hole location or has a right to drill this well at this location pursuant to a contract with an owner of such a mineral or working interest, or to a voluntary pooling agreement or a compulsory pooling order heretofore entered by the division.

3/12/2015

Signature: David H. Cook Date

Printed Name

david.cook@dvn.com

E-mail Address

1st SURVEYOR CERTIFICATION

I hereby certify that the well location shown on this plat was plotted from field notes of actual surveys made by me or under my supervision, and that the same is true and correct to the best of my belief.

FEBRUARY 24, 2015 NEW MEXICO

Date of Survey

Signature and Seal of Professional Surveyor: [Signature]

Certificate Number: FILMONT F. JARAMILLO, PLS 12797

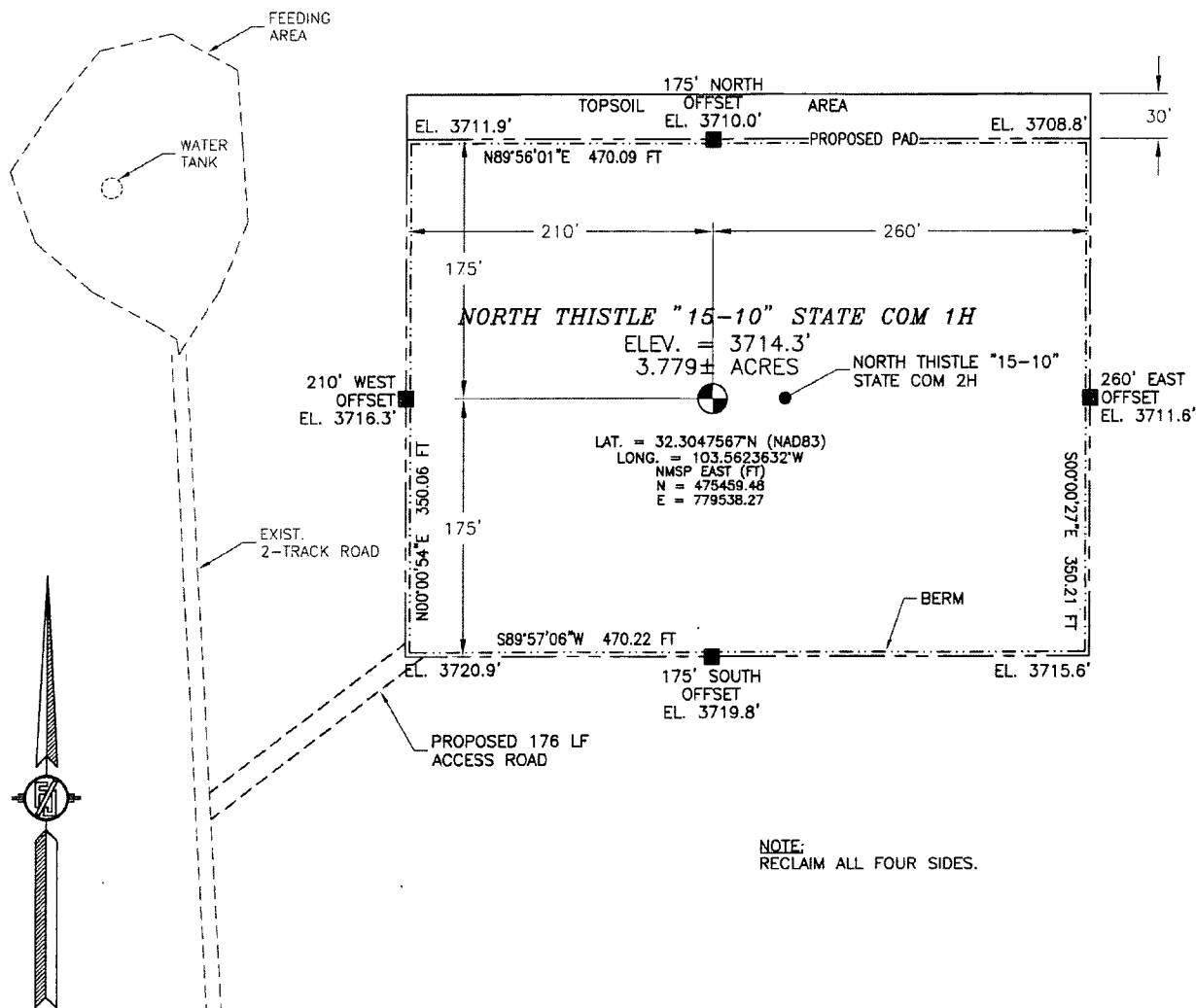
SURVEY NO. 3670

MAR 16 2015

SECTION 15, TOWNSHIP 23 SOUTH, RANGE 33 EAST, N.M.P.M.
LEA COUNTY, STATE OF NEW MEXICO

SITE MAP

NOTE: LATITUDE AND LONGITUDE COORDINATES ARE SHOWN USING THE NORTH AMERICAN DATUM OF 1983 (NAD83). LISTED NEW MEXICO STATE PLANE EAST COORDINATES ARE GRID (NAD83). BASIS OF BEARING AND DISTANCES USED ARE NEW MEXICO STATE PLANE EAST COORDINATES MODIFIED TO THE SURFACE



0 12 60 120 240

SCALE 1" = 120'

DIRECTIONS TO LOCATION

FROM THE INTERSECTION OF CR 21 (DELAWARE BASIN) AND XL ROAD, GO NORTH ON CR 21 FOR APPROX. 2.0 MILES. GO WEST ON 20' CALICHE LEASE ROAD FOR APPROX. 3.0 MILES. GO NORTH ON 2-TRACK ROAD FOR APPROX. 0.4 OF A MILE TO BEGIN ROAD SURVEY. GO NORTHEAST APPROX. 176' TO THE SOUTHWEST PAD CORNER FOR THIS LOCATION.

DEVON ENERGY PRODUCTION COMPANY, L.P.
NORTH THISTLE "15-10" STATE COM 1H
LOCATED 2632 FT. FROM THE NORTH LINE
AND 1982 FT. FROM THE WEST LINE OF
SECTION 15, TOWNSHIP 23 SOUTH,
RANGE 33 EAST, N.M.P.M.
LEA COUNTY, STATE OF NEW MEXICO

FEBRUARY 24, 2015

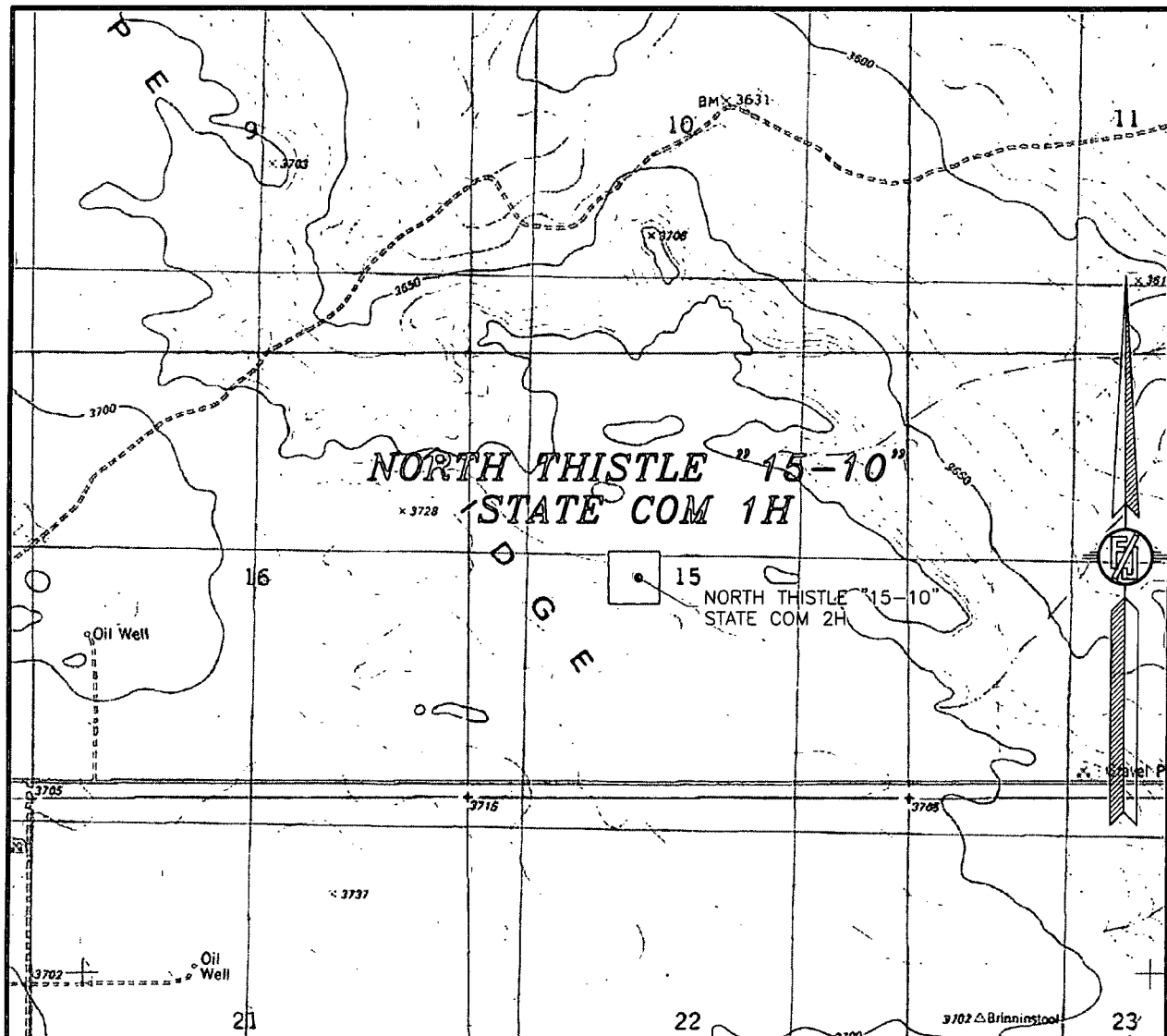
SURVEY NO. 3670

MADRON SURVEYING, INC.

301 SOUTH CANAL
(575) 234-3341

CARLSBAD, NEW MEXICO

15, TOWNSHIP 23 SOUTH, RANGE 33 EAST, N.M.P.M.
LEA COUNTY, STATE OF NEW MEXICO
LOCATION VERIFICATION MAP



USGS QUAD MAP:
TIP TOP WELLS

NOT TO SCALE

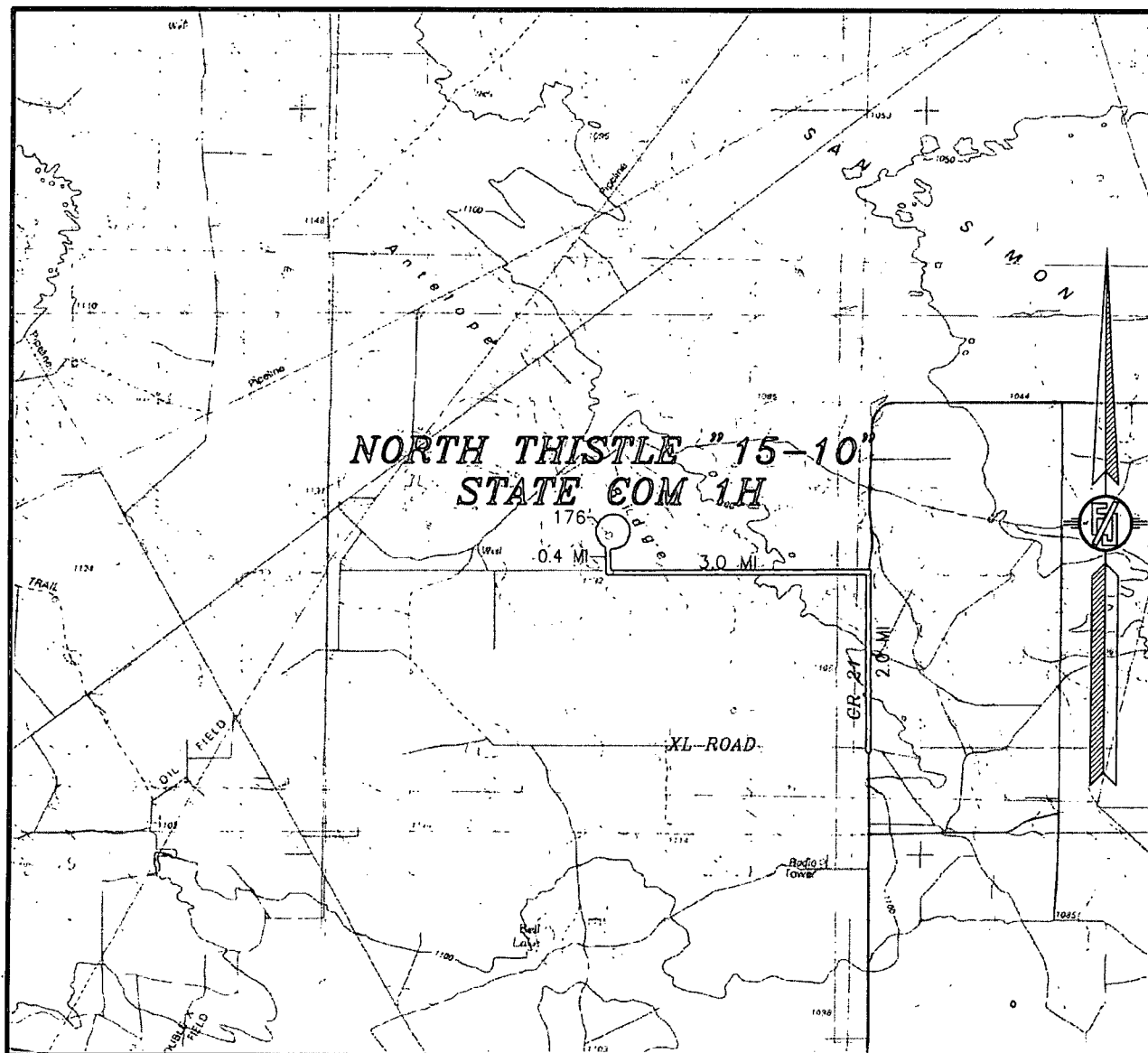
DEVON ENERGY PRODUCTION COMPANY, L.P.
NORTH THISTLE "15-10" STATE COM 1H
 LOCATED 2632 FT. FROM THE NORTH LINE
 AND 1982 FT. FROM THE WEST LINE OF
 SECTION 15, TOWNSHIP 23 SOUTH,
 RANGE 33 EAST, N.M.P.M.
 LEA COUNTY, STATE OF NEW MEXICO

FEBRUARY 24, 2015

SURVEY NO. 3670

MADRON SURVEYING, INC. 301 SOUTH CANAL CARLSBAD, NEW MEXICO
(575) 234-3341

SECTION 15, TOWNSHIP 23 SOUTH, RANGE 33 EAST, N.M.P.M.
LEA COUNTY, STATE OF NEW MEXICO
VICINITY MAP



DISTANCES IN MILES

NOT TO SCALE

DEVON ENERGY PRODUCTION COMPANY, L.P.

NORTH THISTLE "15-10" STATE COM 1H

LOCATED 2632 FT. FROM THE NORTH LINE

AND 1982 FT. FROM THE WEST LINE OF

SECTION 15, TOWNSHIP 23 SOUTH,

RANGE 33 EAST, N.M.P.M.

LEA COUNTY, STATE OF NEW MEXICO

DIRECTIONS TO LOCATION

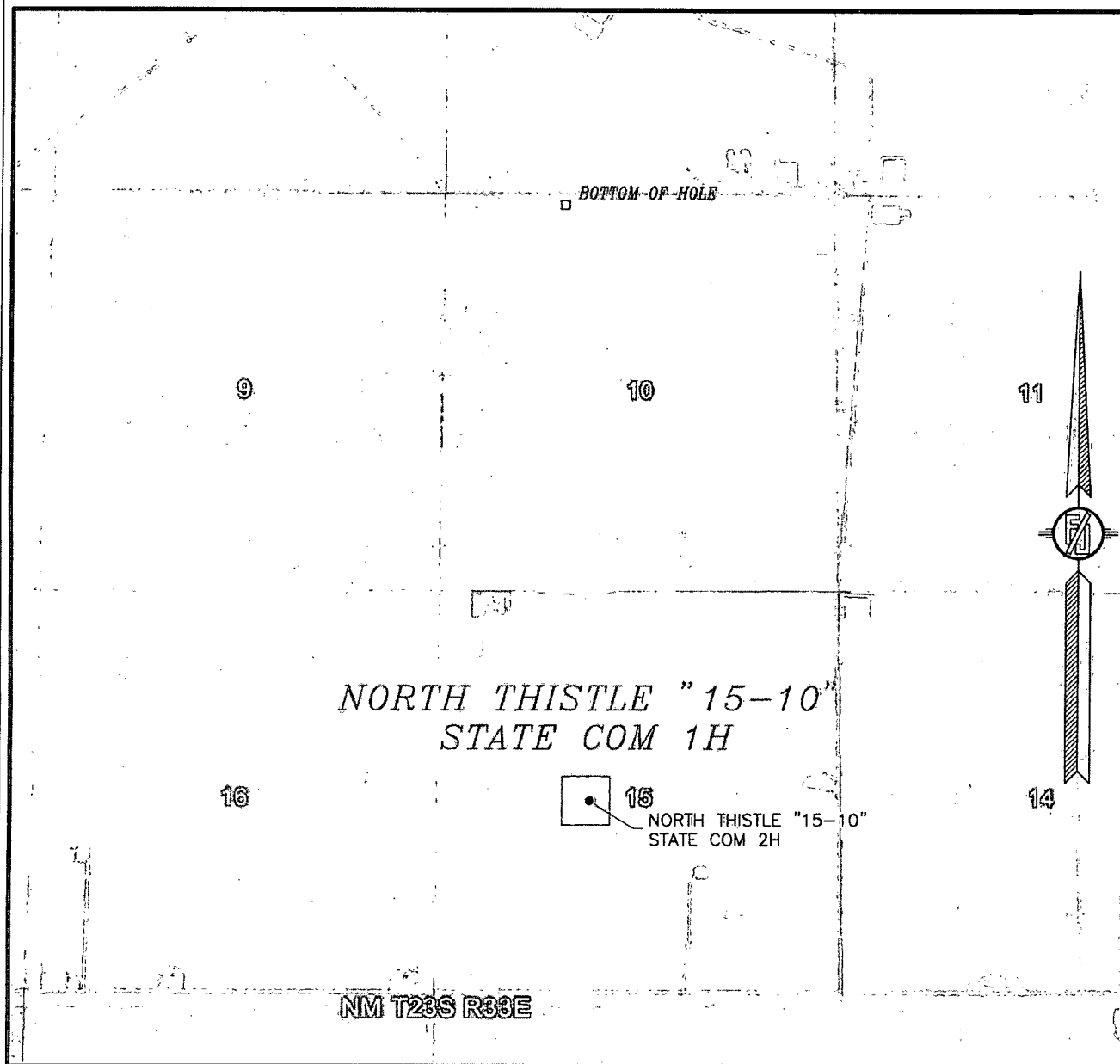
FROM THE INTERSECTION OF CR 21 (DELAWARE BASIN) AND XL ROAD,
GO NORTH ON CR 21 FOR APPROX. 2.0 MILES. GO WEST ON 20'
CALICHE LEASE ROAD FOR APPROX. 3.0 MILES. GO NORTH ON
2-TRACK ROAD FOR APPROX. 0.4 OF A MILE TO BEGIN ROAD
SURVEY. GO NORTHEAST APPROX. 176° TO THE SOUTHWEST PAD
CORNER FOR THIS LOCATION.

FEBRUARY 24, 2015

SURVEY NO. 3670

MADRON SURVEYING, INC. 301 SOUTH CANAL (575) 234-3341 CARLSBAD, NEW MEXICO

SECTION 15, TOWNSHIP 23 SOUTH, RANGE 33 EAST, N.M.P.M.
LEA COUNTY, STATE OF NEW MEXICO
AERIAL PHOTO



NOT TO SCALE
AERIAL PHOTO:
GOOGLE EARTH
FEBRUARY 2014

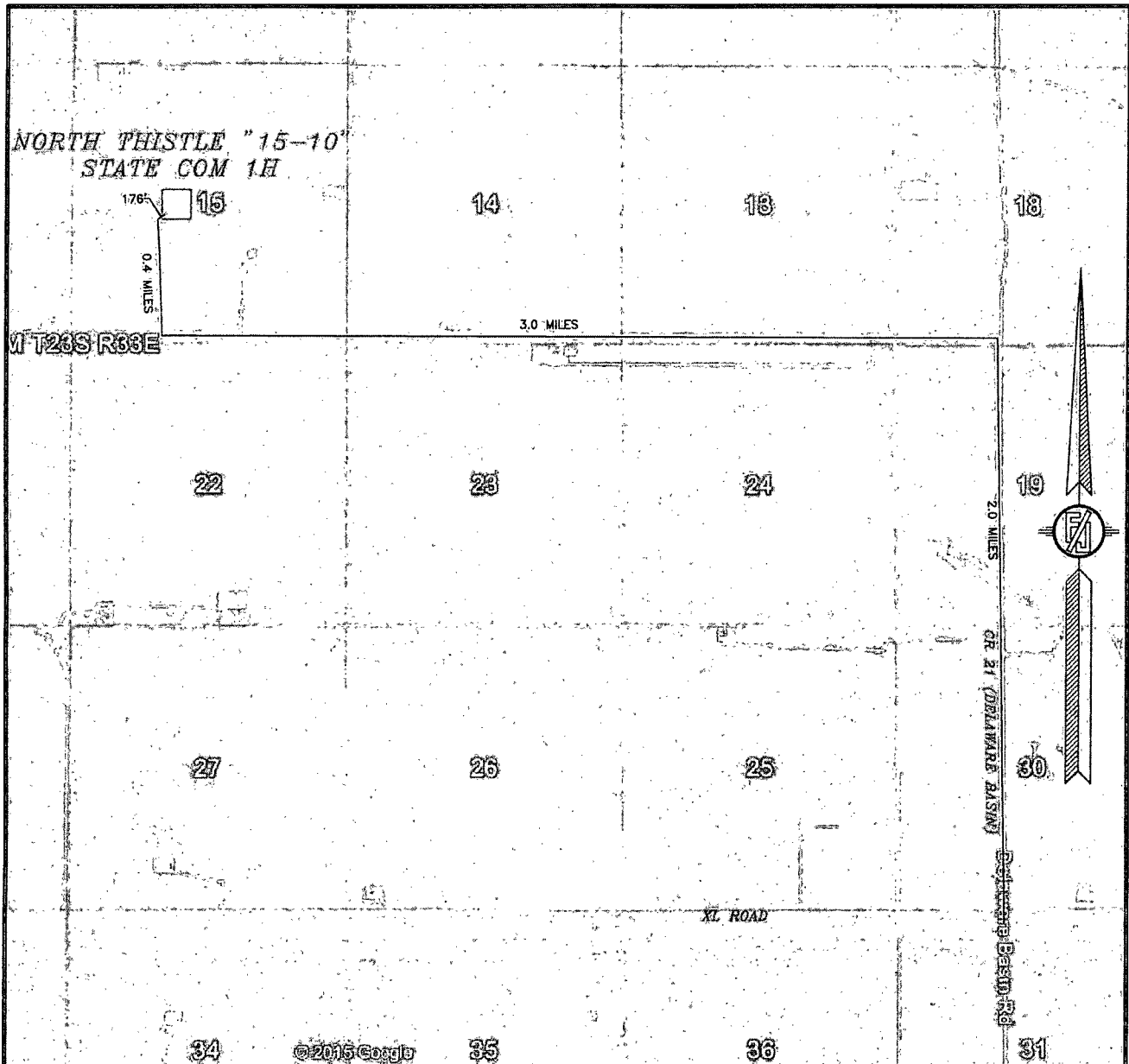
DEVON ENERGY PRODUCTION COMPANY, L.P.
NORTH THISTLE "15-10" STATE COM 1H
LOCATED 2632 FT. FROM THE NORTH LINE
AND 1982 FT. FROM THE WEST LINE OF
SECTION 15, TOWNSHIP 23 SOUTH,
RANGE 33 EAST, N.M.P.M.
LEA COUNTY, STATE OF NEW MEXICO

FEBRUARY 24, 2015

SURVEY NO. 3670

MADRON SURVEYING, INC. 301 SOUTH CANAL (575) 234-3341 CARLSBAD, NEW MEXICO

SECTION 15, TOWNSHIP 23 SOUTH, RANGE 33 EAST, N.M.P.M.
LEA COUNTY, STATE OF NEW MEXICO
ACCESS AERIAL ROUTE MAP



NOT TO SCALE
AERIAL PHOTO:
GOOGLE EARTH
FEBRUARY 2014

DEVON ENERGY PRODUCTION COMPANY, L.P.
NORTH THISTLE "15-10" STATE COM 1H
LOCATED 2632 FT. FROM THE NORTH LINE
AND 1982 FT. FROM THE WEST LINE OF
SECTION 15, TOWNSHIP 23 SOUTH,
RANGE 33 EAST, N.M.P.M.
LEA COUNTY, STATE OF NEW MEXICO

FEBRUARY 24, 2015

SURVEY NO. 3670

MADRON SURVEYING, INC. 301 SOUTH CANAL (575) 234-3341 CARLSBAD, NEW MEXICO