

DISTRICT I  
1625 N. French Dr., Hobbs, NM 88240  
Phone: (575) 393-6161 Fax: (575) 393-0720

DISTRICT II  
811 S. First St., Artesia, NM 88210  
Phone: (575) 748-1283 Fax: (575) 748-9720

DISTRICT III  
1000 Rio Brazos Road, Aztec, NM 87410  
Phone: (505) 334-6178 Fax: (505) 334-6170

DISTRICT IV  
1220 S. St. Francis Dr., Santa Fe, NM 87505  
Phone: (505) 476-3460 Fax: (505) 476-3462

State of New Mexico  
Energy, Minerals & Natural Resources Department  
OIL CONSERVATION DIVISION **HOBBS OGD**  
1220 South St. Francis Dr.  
Santa Fe, New Mexico 87505

Form C-102  
Revised August 1, 2011  
Submit one copy to appropriate  
District Office

MAR 30 2015

AMENDED REPORT

WELL LOCATION AND ACREAGE DEDICATION **REPEATED**

API Number <b>30-025-42497</b>	Pool Code <b>50510</b>	Pool Name <b>QUERRECHO PLAINS; LOWER BS</b>
Property Code <b>314344</b>	Property Name <b>WIZARD 34 FEDERAL COM</b>	Well Number <b>1H</b>
GRID No. <b>258462</b>	Operator Name <b>NADEL &amp; GUSSMAN HEYCO, LLC</b>	Elevation <b>3688'</b>

Surface Location

UL or lot No.	Section	Township	Range	Lot Idn	Feet from the	North/South line	Feet from the	East/West line	County
<b>M</b>	<b>34</b>	<b>18-S</b>	<b>32-E</b>		<b>510</b>	<b>SOUTH</b>	<b>150</b>	<b>WEST</b>	<b>LEA</b>

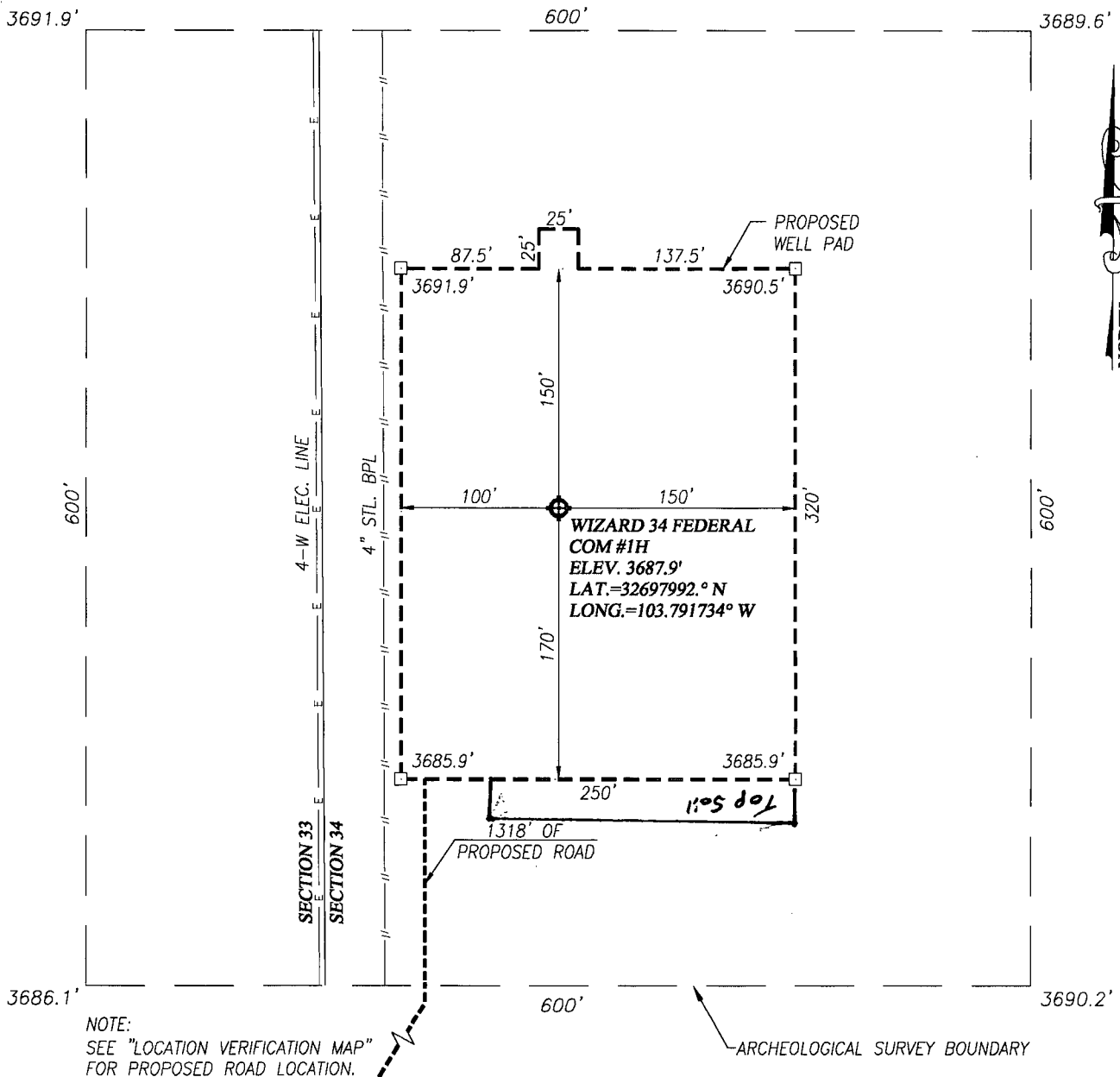
Bottom Hole Location If Different From Surface

UL or lot No.	Section	Township	Range	Lot Idn	Feet from the	North/South line	Feet from the	East/West line	County
<b>P</b>	<b>34</b>	<b>18-S</b>	<b>32-E</b>		<b>510</b>	<b>SOUTH</b>	<b>330</b>	<b>East</b>	<b>LEA</b>

Dedicated Acres <b>160</b>	Joint or Infill	Consolidation Code	Order No.
-------------------------------	-----------------	--------------------	-----------

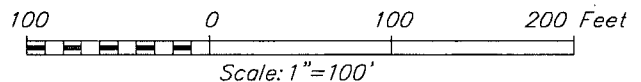
NO ALLOWABLE WILL BE ASSIGNED TO THIS COMPLETION UNTIL ALL INTERESTS HAVE BEEN CONSOLIDATED OR A NON-STANDARD UNIT HAS BEEN APPROVED BY THE DIVISION

<p><b>DETAIL</b></p>		<p><b>GEODETIC COORDINATES</b> NAD 27 NME</p> <p><b>SURFACE LOCATION</b> Y=618114.5 N X=675838.7 E</p> <p><b>BOTTOM HOLE LOCATION</b> Y=618129.4 N X=680642.0 E</p>		<p><b>CORNER COORDINATES TABLE</b></p> <p>A - Y=618924.2 N, X=675683.3 E B - Y=618940.6 N, X=680966.5 E C - Y=617620.5 N, X=680975.3 E D - Y=617604.2 N, X=675692.1 E</p>	
<p><b>GRID AZ.=89°49'23"</b> <b>HORIZ. DIST.=4804.4'</b></p>		<p><b>DATE OF SURVEY</b> <b>SEPTEMBER 9, 2013</b></p>		<p><b>OPERATOR CERTIFICATION</b></p> <p>I hereby certify that the information herein is true and complete to the best of my knowledge and belief, and that this organization either owns a working interest or unleased mineral interest in the land including the proposed bottom hole location or has a right to drill this well at this location pursuant to a contract with an owner of such mineral or working interest, or to a voluntary pooling agreement or a compulsory pooling order heretofore entered by the division.</p> <p><i>Keith Cannon</i> <b>12-11-13</b> Signature Date</p> <p>Keith Cannon Printed Name</p> <p>kcannon@heycoenergy.com E-mail Address</p>	
<p><b>SURVEYOR CERTIFICATION</b></p> <p>I hereby certify that the well location shown on this plat was plotted from field notes of actual surveys made by me or under my supervision, and that the same is true and correct to the best of my belief.</p>		<p><b>SEPTEMBER 9, 2013</b></p>		<p><b>DATE OF SURVEY</b> <b>SEPTEMBER 9, 2013</b></p>	
<p><b>DATE OF SURVEY</b> <b>SEPTEMBER 9, 2013</b></p>		<p><b>Signature of Professional Surveyor:</b> <i>Ronald J. Eidson</i></p>		<p><b>Professional Surveyor Seal:</b> RONALD J. EIDSON NEW MEXICO 3239 JWSC W.O.: 13.11.0986</p>	
<p><b>GRID AZ.=89°49'23"</b> <b>HORIZ. DIST.=4804.4'</b></p>		<p><b>DATE OF SURVEY</b> <b>SEPTEMBER 9, 2013</b></p>		<p><b>Signature of Professional Surveyor:</b> <i>Ronald J. Eidson</i></p>	
<p><b>GRID AZ.=89°49'23"</b> <b>HORIZ. DIST.=4804.4'</b></p>		<p><b>DATE OF SURVEY</b> <b>SEPTEMBER 9, 2013</b></p>		<p><b>Signature of Professional Surveyor:</b> <i>Ronald J. Eidson</i></p>	



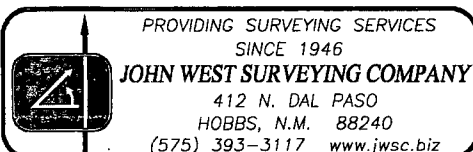
#### DIRECTIONS TO LOCATION

FROM THE INTERSECTION OF ST. HIGHWAY 529 & L-126  
(MALJAMAR RD.) GO SOUTH ON L-126 APPROX. 7.6 MILES;  
TURN LEFT AND GO NORTHEAST ON A LEASE RD. FOR APPROX.  
0.1 MILES; TURN RIGHT AND GO EAST NORTHEAST APPROX 2.1  
MILES; TURN LEFT AND GO NORTHEAST APPROX 0.1 MILES; TURN  
LEFT AND GO NORTHWEST AT TEE APPROX 0.3 MILES TO A "Y";  
TURN LEFT AND GO WEST SOUTHWEST APPROX. 0.1 MILE TO AN  
EXISTING PAD. FROM THE SOUTHWEST CORNER OF THE PAD GO  
SOUTHEAST 23 FEET TO BEGIN ROAD SURVEY. FOLLOW ROAD  
SURVEY NORTHEAST 1181.5 FEET; TURN LEFT AND GO NORTH  
136 FEET TO THIS LOCATION.



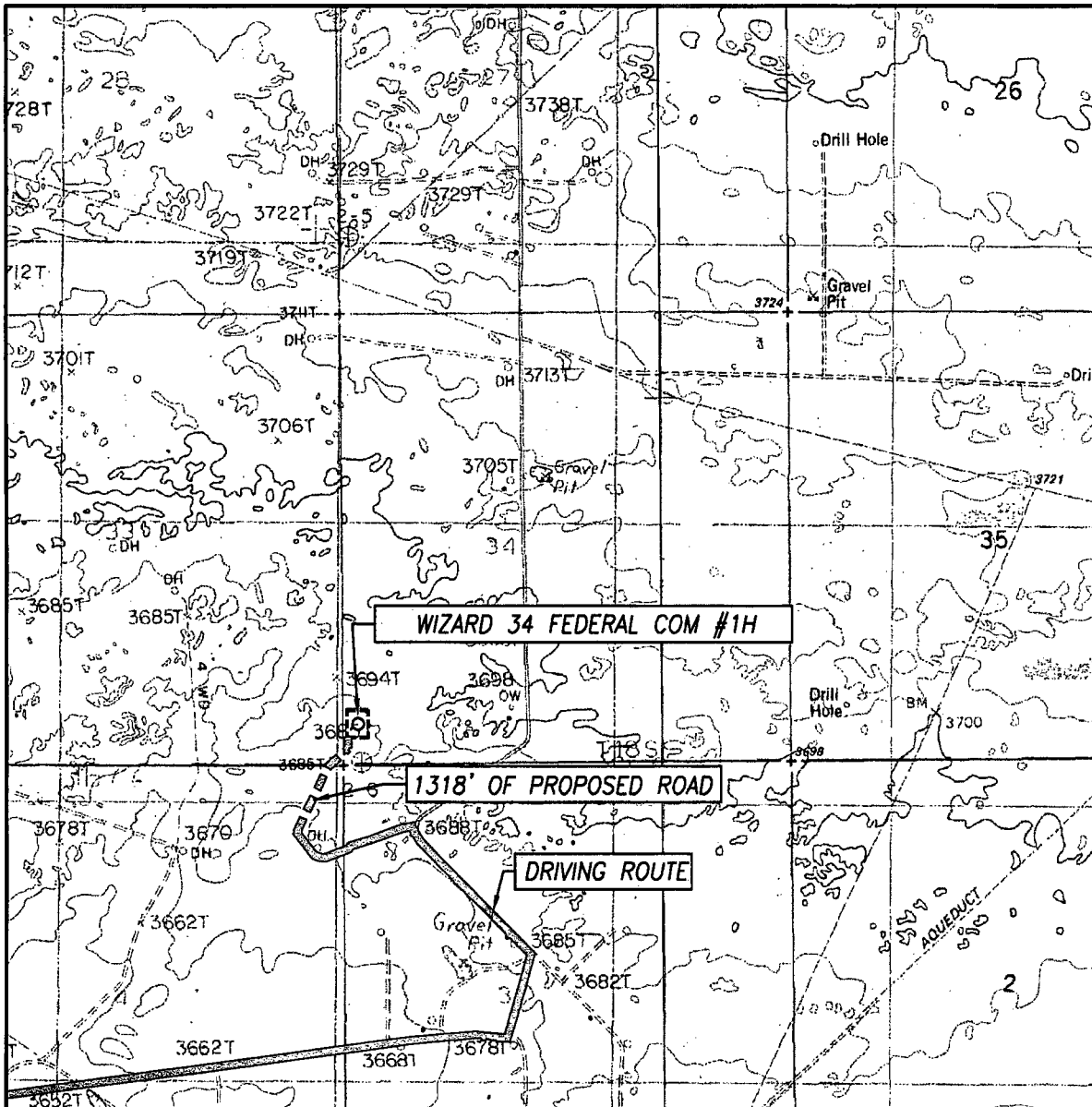
## NADEL & GUSSMAN HEYCO, LLC

**WIZARD 34 FEDERAL COM #1H WELL  
LOCATED 510 FEET FROM THE SOUTH LINE  
AND 150 FEET FROM THE WEST LINE OF SECTION 34,  
TOWNSHIP 18 SOUTH, RANGE 32 EAST, N.M.P.M.,  
LEA COUNTY, NEW MEXICO**



Survey Date: 9/5/13	CAD Date: 9/12/13	Drawn By: BKL
W.O. No.: 13110986	Rev: .	Rel. W.O.: Sheet 1 of 1

# LOCATION VERIFICATION MAP



SCALE: 1" = 2000'

CONTOUR INTERVAL:  
SPRING LAKE, N.M. - 10'

SEC. 34 TWP. 18-S RGE. 32-E

SURVEY N.M.P.M.

COUNTY LEA STATE NEW MEXICO

DESCRIPTION 510' FSL & 150 FWL

ELEVATION 3688'

OPERATOR NADEL & GUSSMAN HEYCO, LLC

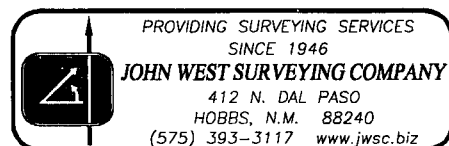
LEASE WIZARD 34 FEDERAL COM

U.S.G.S. TOPOGRAPHIC MAP

SPRING LAKE, N.M.

## DIRECTIONS TO LOCATION

FROM THE INTERSECTION OF ST. HIGHWAY 529 & L-126 (MALJAMAR RD.) GO SOUTH ON L-126 APPROX. 7.6 MILES; TURN LEFT AND GO NORTHEAST ON A LEASE RD. FOR APPROX. 0.1 MILES; TURN RIGHT AND GO EAST NORTHEAST APPROX 2.1 MILES; TURN LEFT AND GO NORTHEAST APPROX 0.1 MILES; TURN LEFT AND GO NORTHWEST AT TEC APPROX 0.3 MILES TO A "Y"; TURN LEFT AND GO WEST SOUTHWEST APPROX. 0.1 MILE TO AN EXISTING PAD. FROM THE SOUTHWEST CORNER OF THE PAD GO SOUTHEAST 23 FEET TO BEGIN ROAD SURVEY. FOLLOW ROAD SURVEY NORTHEAST 1181.5 FEET; TURN LEFT AND GO NORTH 136 FEET TO THIS LOCATION.



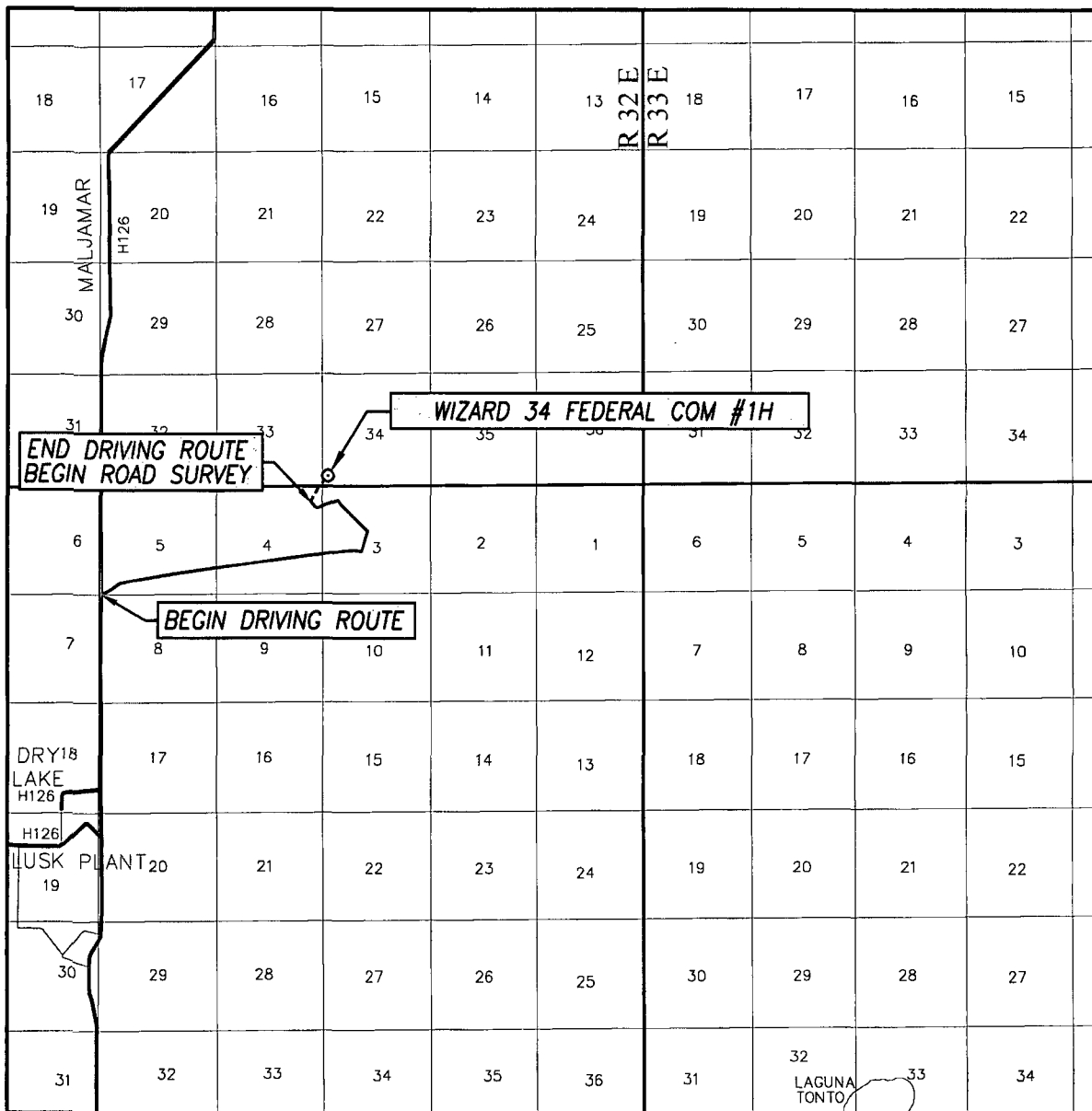
PROVIDING SURVEYING SERVICES  
SINCE 1946

**JOHN WEST SURVEYING COMPANY**

412 N. DAL PASO  
HOBBBS, N.M. 88240

(575) 393-3117 [www.jwsc.biz](http://www.jwsc.biz)

# VICINITY MAP



SCALE: 1" = 2 MILES

DRIVING ROUTE: SEE LOCATION MAP

SEC. 34 TWP. 18-S RGE. 32-E

SURVEY N.M.P.M.

COUNTY LEA STATE NEW MEXICO

DESCRIPTION 510' FSL & 150 FWL

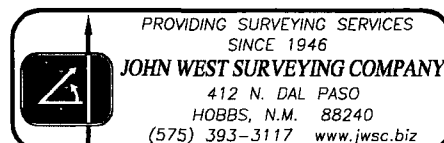
ELEVATION 3688'

OPERATOR NADEL & GUSSMAN HEYCO, LLC

LEASE WIZARD 34 FEDERAL COM

## DIRECTIONS TO LOCATION

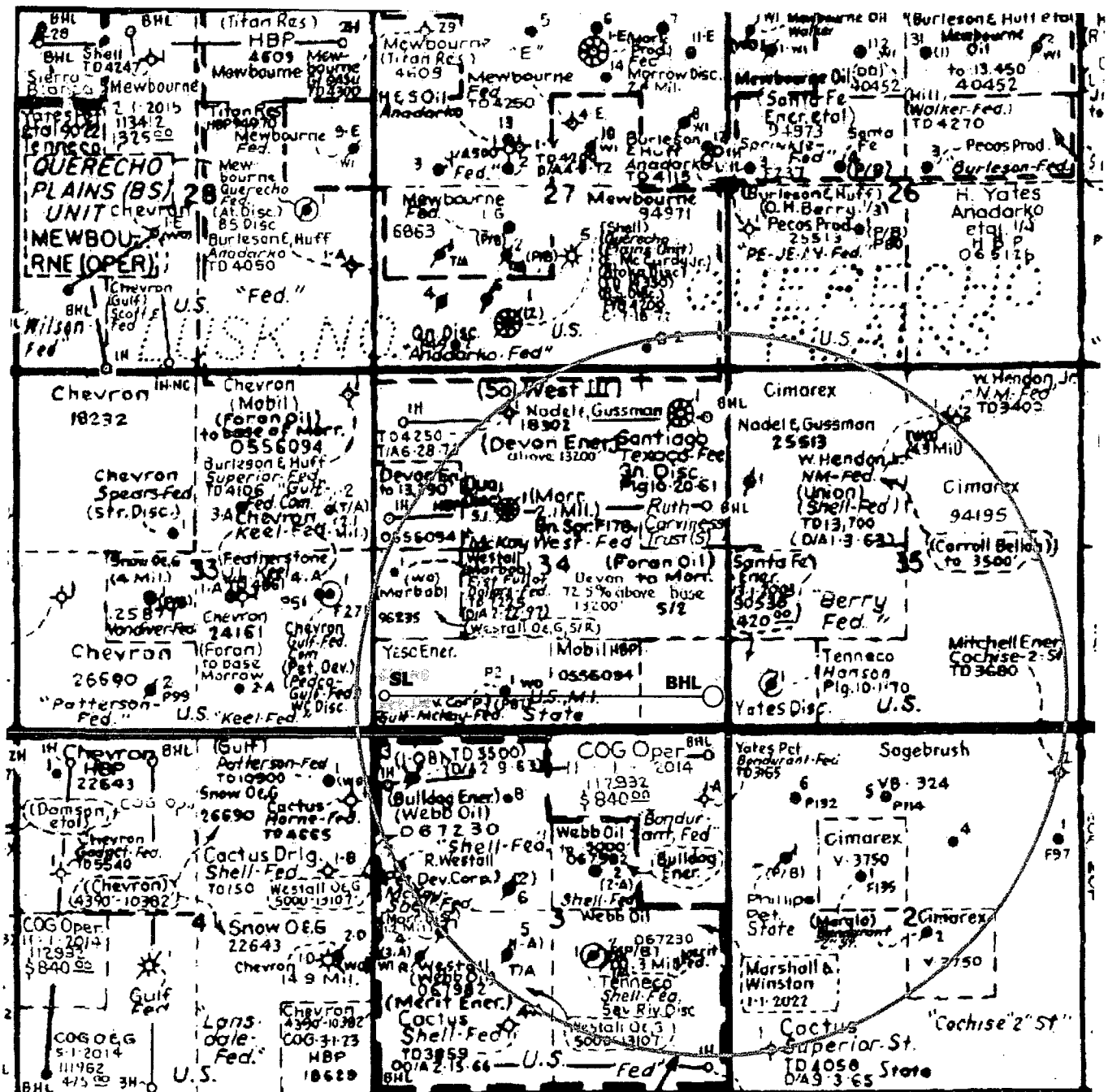
FROM THE INTERSECTION OF ST. HIGHWAY 529 & L-126 (MALJAMAR RD.) GO SOUTH ON L-126 APPROX. 7.6 MILES; TURN LEFT AND GO NORTHEAST ON A LEASE RD. FOR APPROX. 0.1 MILES; TURN RIGHT AND GO EAST NORTHEAST APPROX 2.1 MILES; TURN LEFT AND GO NORTHEAST APPROX 0.1 MILES; TURN LEFT AND GO NORTHWEST AT TEC APPROX 0.3 MILES TO A "Y"; TURN LEFT AND GO WEST SOUTHWEST APPROX. 0.1 MILE TO AN EXISTING PAD. FROM THE SOUTHWEST CORNER OF THE PAD GO SOUTHEAST 23 FEET TO BEGIN ROAD SURVEY. FOLLOW ROAD SURVEY NORTHEAST 1181.5 FEET; TURN LEFT AND GO NORTH 136 FEET TO THIS LOCATION.



[illegible]

## 1 mi. radius from SL

# Wizard 34 Fed Com #1H



1 mi. radius from BHL