

APR 13 2015

RECEIVED

District I
1625 N. French Dr., Hobbs, NM 88240
Phone: (575) 393-6161 Fax: (575) 393-0720
District II
511 S. First St., Artesia, NM 88210
Phone: (575) 748-1283 Fax: (575) 748-9720
District III
1000 Rio Brazos Road, Aztec, NM 87410
Phone: (505) 334-6178 Fax: (505) 334-6170
District IV
1220 S. St. Francis Dr., Santa Fe, NM 87503
Phone: (505) 476-3460 Fax: (505) 476-3462

State of New Mexico
Energy, Minerals & Natural Resources Department
OIL CONSERVATION DIVISION
1220 South St. Francis Dr.
Santa Fe, NM 87505

Form C-102
Revised August 1, 2011
Submit one copy to appropriate
District Office

☐ AMENDED REPORT

WELL LOCATION AND ACREAGE DEDICATION PLAT

¹ API Number 70-025-42515	² Pool Code 49460	³ Pool Name Paduca; Delaware, NORTH
⁴ Property Code 314752	⁵ Property Name REBEL 20 FED	⁶ Well Number 1H
⁷ OGRID No. 6137	⁸ Operator Name DEVON ENERGY PRODUCTION COMPANY, L.P.	⁹ Elevation 3571.7

¹⁰ Surface Location

U/L or lot no.	Section	Township	Range	Lot Idn	Feet from the	North/South line	Feet from the	East/West line	County
D	20	24 S	32 E		330	NORTH	520	WEST	LEA

¹¹ Bottom Hole Location If Different From Surface

U/L or lot no.	Section	Township	Range	Lot Idn	Feet from the	North/South line	Feet from the	East/West line	County
M	20	24 S	32 E		330	SOUTH	660	WEST	LEA

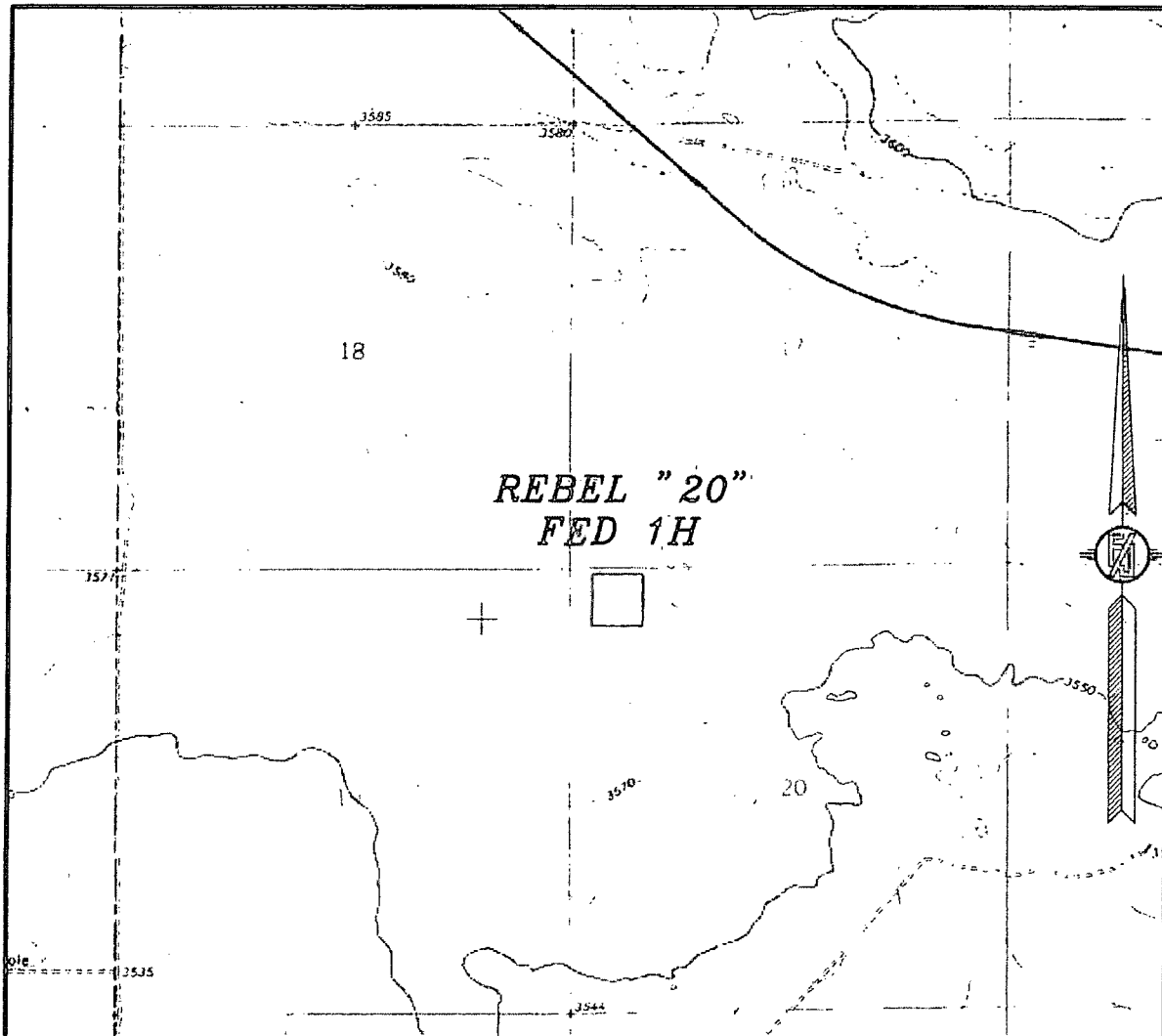
¹² Dedicated Acres 160 ac	¹³ Joint or Infill	¹⁴ Consolidation Code	¹⁵ Order No.
--	-------------------------------	----------------------------------	-------------------------

No allowable will be assigned to this completion until all interests have been consolidated or a non-standard unit has been approved by the division.

	<p>¹⁶ OPERATOR CERTIFICATION</p> <p>I hereby certify that the information contained herein is true and complete to the best of my knowledge and belief, and that this organization either owns a working interest or unleased mineral interest in the land including the proposed bottom hole location or has a right to drill this well at this location pursuant to a contract with an owner of such a mineral or working interest, or to a voluntary pooling agreement or a compulsory pooling order heretofore entered into by the division.</p> <p><i>Trina C. Couch</i> 8/21/14 Signature</p> <p>Trina C. Couch, Regulatory Analyst Printed Name</p> <p>trina.couch@dmv.com E-mail Address</p>
	<p>¹⁷ SURVEYOR CERTIFICATION</p> <p>I hereby certify that the well location shown on this plat was plotted from field notes of actual surveys made by me or under my supervision, and that the same is true and correct to the best of my belief.</p> <p>AUGUST 11, 2014 Date of Survey</p> <p><i>[Signature]</i> Signature of Licensed Professional Surveyor</p> <p>Certificate Number: 12797 SURVEY NO. 1731A</p>

APR 14 2015

SECTION 20, TOWNSHIP 24 SOUTH, RANGE 32 EAST, N.M.P.M.
LEA COUNTY, STATE OF NEW MEXICO
LOCATION VERIFICATION MAP



USGS QUAD MAP:
PADUCA BREAKS NW

NOT TO SCALE

DEVON ENERGY PRODUCTION COMPANY, L.P.

REBEL "20" FED 1H

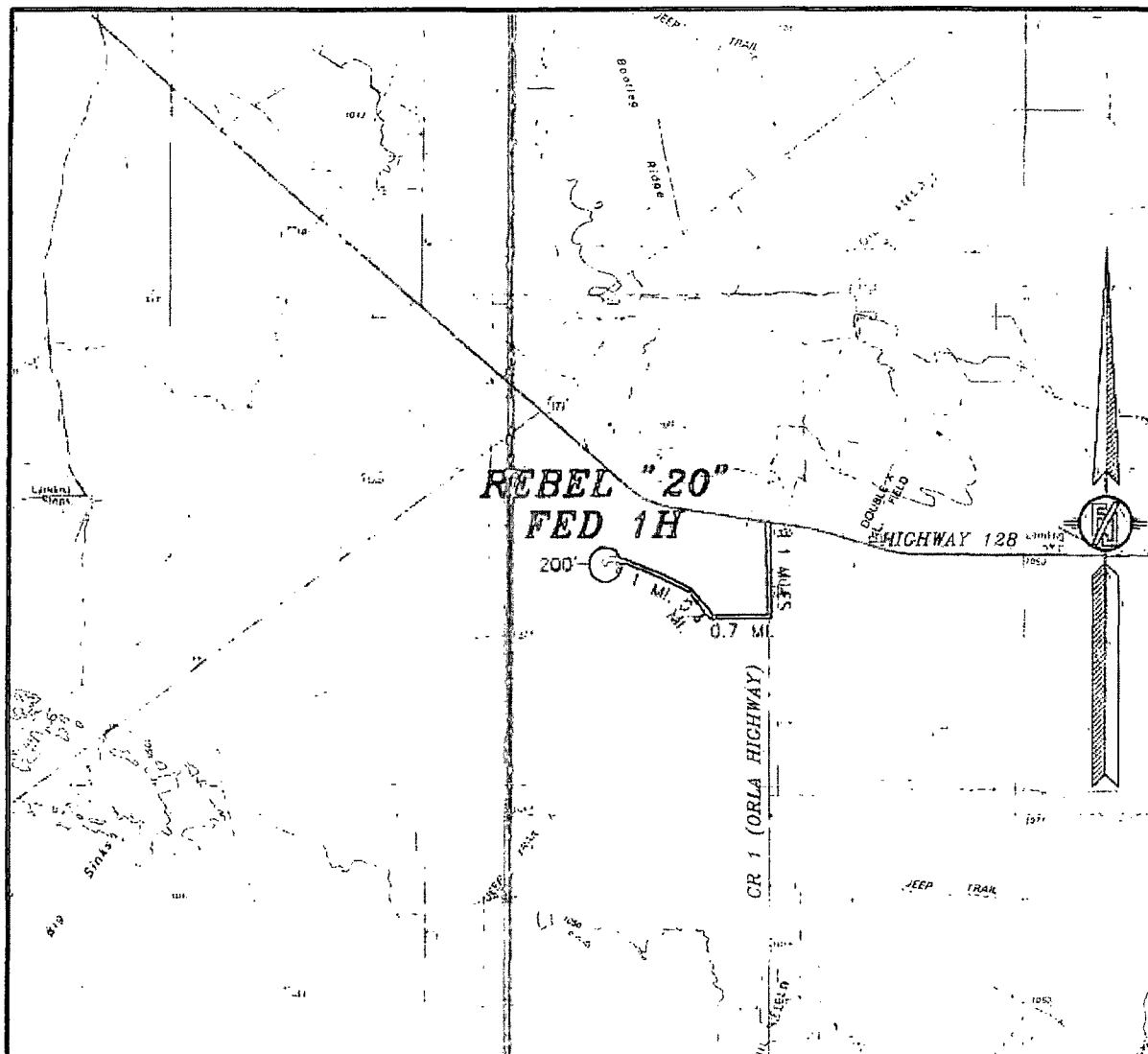
LOCATED 330 FT. FROM THE NORTH LINE
AND 520 FT. FROM THE WEST LINE OF
SECTION 20, TOWNSHIP 24 SOUTH,
RANGE 32 EAST, N.M.P.M.
LEA COUNTY, STATE OF NEW MEXICO

AUGUST 11, 2014

SURVEY NO. 1731A

MADRON SURVEYING, INC. 301 SOUTH CANAL CARLSBAD, NEW MEXICO
(575) 234-3341

SECTION 20, TOWNSHIP 24 SOUTH, RANGE 32 EAST, N.M.P.M.
LEA COUNTY, STATE OF NEW MEXICO
VICINITY MAP



DISTANCES IN MILES

NOT TO SCALE

DEVON ENERGY PRODUCTION COMPANY, L.P.

REBEL "20" FED 1H

LOCATED 330 FT. FROM THE NORTH LINE
AND 520 FT. FROM THE WEST LINE OF
SECTION 20, TOWNSHIP 24 SOUTH,
RANGE 32 EAST, N.M.P.M.
LEA COUNTY, STATE OF NEW MEXICO

DIRECTIONS TO LOCATION

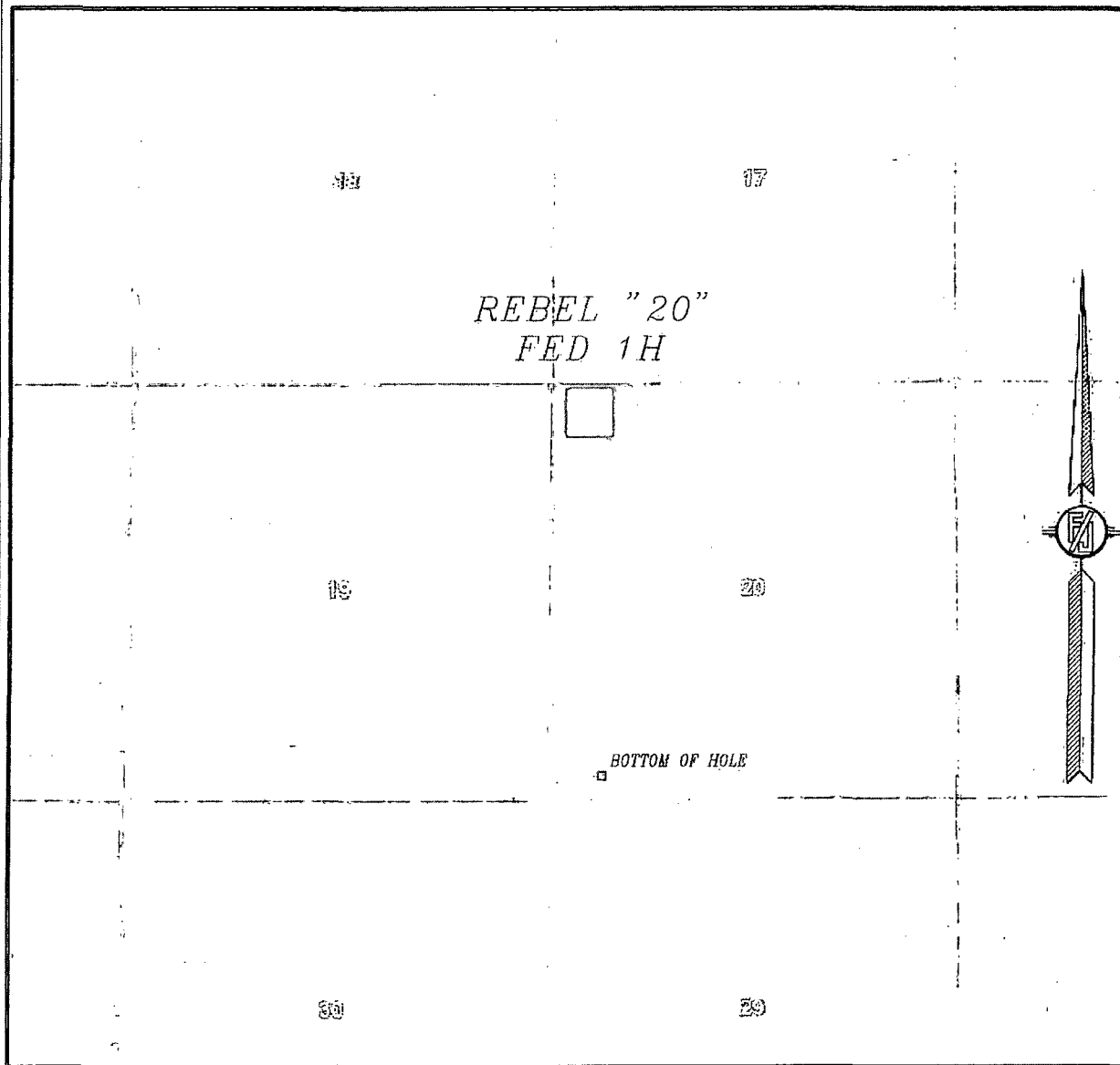
FROM THE INTERSECTION OF HIGHWAY 128 AND CR 1 (ORLA HIGHWAY) GO SOUTH ON CR 1 APPROX. 1.1 MILES TO A LEASE ROAD ON RIGHT (WEST), TURN RIGHT (WEST) ON LEASE ROAD AND GO APPROX. 0.7 MILES TO A ROAD LATH WITH RED AND WHITE FLAGGING MARKED & PROPOSED NEW ROAD. FOLLOW LATHS GOING NORTHWEST APPROX. 0.4 MILES TO A 2-TRACK ROAD GOING WEST. FOLLOW 2-TRACK ROAD APPROX. 1.1 MILES, GO THROUGH FENCE GATE. LOCATION IS 200 FT. SOUTH.

AUGUST 11, 2014

SURVEY NO. 1731A

MADRON SURVEYING, INC. 301 SOUTH CANAL (575) 234-3341 CARLSBAD, NEW MEXICO

SECTION 20, TOWNSHIP 24 SOUTH, RANGE 32 EAST, N.M.P.M.
LEA COUNTY, STATE OF NEW MEXICO
AERIAL PHOTO



NOT TO SCALE
AERIAL PHOTO:
GOOGLE EARTH
MARCH 2012

DEVON ENERGY PRODUCTION COMPANY, L.P.

REBEL "20" FED 1H

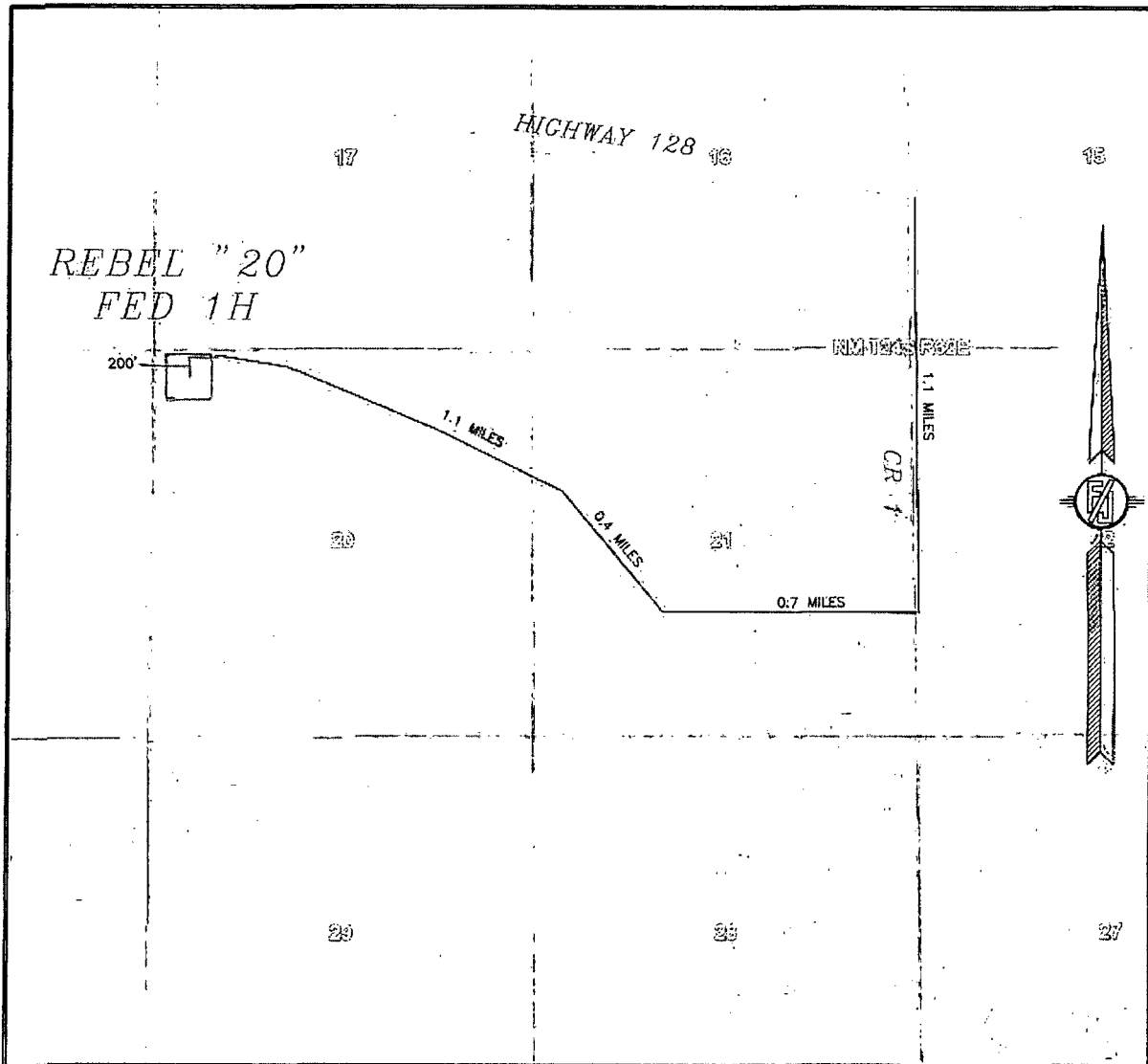
LOCATED 330 FT. FROM THE NORTH LINE
AND 520 FT. FROM THE WEST LINE OF
SECTION 20, TOWNSHIP 24 SOUTH,
RANGE 32 EAST, N.M.P.M.
LEA COUNTY, STATE OF NEW MEXICO

AUGUST 11, 2014

SURVEY NO. 1731A

MADRON SURVEYING, INC. 301 SOUTH CANAL (575) 234-3341 CARLSBAD, NEW MEXICO

SECTION 20, TOWNSHIP 24 SOUTH, RANGE 32 EAST, N.M.P.M.
LEA COUNTY, STATE OF NEW MEXICO
ACCESS AERIAL ROUTE MAP



NOT TO SCALE
AERIAL PHOTO:
GOOGLE EARTH
MARCH 2012

NOT TO SCALE

DEVON ENERGY PRODUCTION COMPANY, L.P.

REBEL "20" FED 1H

LOCATED 330 FT. FROM THE NORTH LINE
AND 520 FT. FROM THE WEST LINE OF
SECTION 20, TOWNSHIP 24 SOUTH,
RANGE 32 EAST, N.M.P.M.
LEA COUNTY, STATE OF NEW MEXICO

AUGUST 11, 2014

SURVEY NO. 1731A

MADRON SURVEYING, INC. 301 SOUTH CANAL (575) 234-3341 CARLSBAD, NEW MEXICO

ENEYE 18 FEDERAL #1H

REBEL 20 FEDERAL 1H
T24S - R32E

DOUBLE ABJ

DIAGA 18 FEDERAL 1

1 MILE

SHL

HARACZ AMO FEDERAL 7

BHL

REBEL 20 FED 1H

1 MILE

TURQUOISE 30 FED 1

PADUCA FEDERAL 1

PAYNE 1

BOMBAY BSB FEDERAL 1H

SHL to nearest lease line: 330 ft.
SHL to nearest wellbore: 3944 ft. SW.
BHL to nearest wellbore: 2300 ft. S.
SHL to BHL 4616 ft.*

All distances are estimated.*

DEVON

ONE MILE RADIUS MAP

REBEL 20 FEDERAL 1H

- WELL SYMBOLS
- ⊕ DRY AND ABANDONED WELL
 - ⊙ GAS PRODUCING WELL
 - LOCATION
 - ⊙ OIL PRODUCING WELL
 - ⊙ PILOT HOLE

By: Cpowers