

DISTRICT I
1625 N. French Dr., Hobbs, NM 88240
Phone: (575) 393-6161 Fax: (575) 393-0720

DISTRICT II
811 S. First St., Artesia, NM 88210
Phone: (575) 748-1283 Fax: (575) 748-9720

DISTRICT III
1000 Rio Brazos Road, Aztec, NM 87410
Phone: (505) 334-6178 Fax: (505) 334-6170

DISTRICT IV
1220 S. St. Francis Dr., Santa Fe, NM 87505
Phone: (505) 476-3460 Fax: (505) 476-3462

State of New Mexico
Energy, Minerals & Natural Resources Department
OIL CONSERVATION DIVISION
1220 South St. Francis Dr.
Santa Fe, New Mexico 87505

HOBBSCOCD
APR 27 2015
RECEIVED

Form C-102
Revised August 1, 2011
Submit one copy to appropriate District Office
☐ AMENDED REPORT

WELL LOCATION AND ACREAGE DEDICATION PLAT

API Number 30-025-42472	Pool Code 33250	Pool Name House; Drinkard
Property Code 302384	Property Name WERTA FEDERAL	Well Number 6
OGRID No. 873	Operator Name APACHE CORPORATION	Elevation 3582'

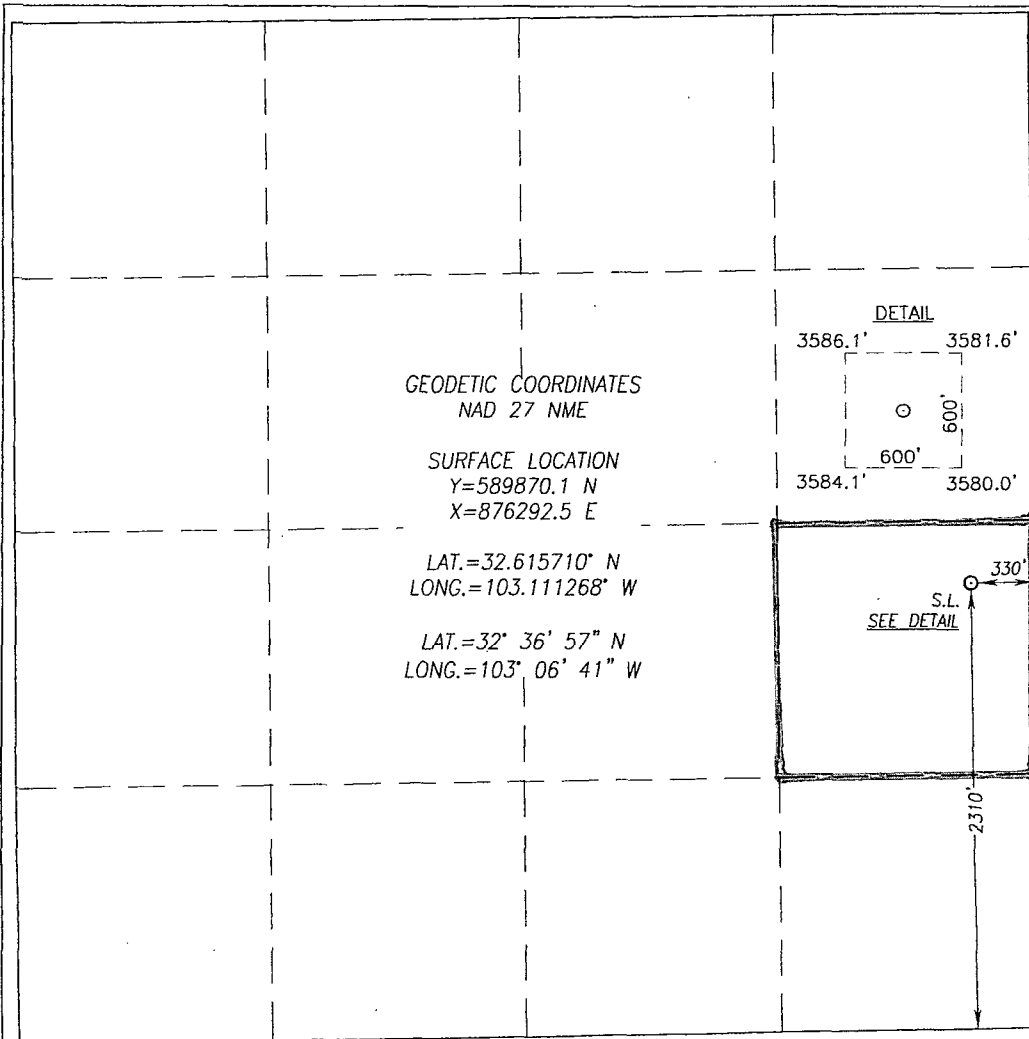
Surface Location

UL or lot No.	Section	Township	Range	Lot Idn	Feet from the	North/South line	Feet from the	East/West line	County
I	35	19-S	38-E		2310	SOUTH	330	EAST	LEA

Bottom Hole Location If Different From Surface

UL or lot No.	Section	Township	Range	Lot Idn	Feet from the	North/South line	Feet from the	East/West line	County
Dedicated Acres 40	Joint or Infill	Consolidation Code	Order No.						

NO ALLOWABLE WILL BE ASSIGNED TO THIS COMPLETION UNTIL ALL INTERESTS HAVE BEEN CONSOLIDATED OR A NON-STANDARD UNIT HAS BEEN APPROVED BY THE DIVISION



OPERATOR CERTIFICATION

I hereby certify that the information herein is true and complete to the best of my knowledge and belief, and that this organization either owns a working interest or unleased mineral interest in the land including the proposed bottom hole location or has a right to drill this well at this location pursuant to a contract with an owner of such mineral or working interest, or to a voluntary pooling agreement or a compulsory pooling order heretofore entered by the division.

Signature Sorina L. Flores **Date** 4/14

Printed Name Sorina L. Flores

E-mail Address sorina.flores@apachecorp.com

SURVEYOR CERTIFICATION

I hereby certify that the well location shown on this plat was plotted from field notes of actual surveys made by me or under my supervision, and that the same is true and correct to the best of my belief.

DECEMBER 31, 2013

Date of Survey

Signature & Seal of Professional Surveyor:

GARY G. EIDSON
NEW MEXICO
12641
Surveyor
Gary G. Eidson 4/28/14

Certificate Number Gary G. Eidson 12641
Ronald J. Eidson 3239

BKL PROFESSIONAL SURVEYOR **JWSC W.O.: 13.11.1334**

APR 28 2015

DISTRICT I
1625 N. French Dr., Hobbs, NM 88240
Phone: (505) 393-6161 Fax: (505) 393-0720

DISTRICT II
811 S. First St., Artesia, NM 88210
Phone: (505) 748-1283 Fax: (505) 748-9720

DISTRICT III
1000 Rio Brazos Road, Aztec, NM 87410
Phone: (505) 334-6178 Fax: (505) 334-6170

DISTRICT IV
1220 S. St. Francis Dr., Santa Fe, NM 87505
Phone: (505) 476-3460 Fax: (505) 476-3462

State of New Mexico
Energy, Minerals & Natural Resources Department
OIL CONSERVATION DIVISION
1220 South St. Francis Dr.
Santa Fe, New Mexico 87505

HOBBSCOCD

APR 27 2015

Form C-102
Revised August 1, 2011
Submit one copy to appropriate
District Office

☐ AMENDED REPORT

WELL LOCATION AND ACREAGE DEDICATION

API Number 30-025-42432	Pool Code 33470	Pool Name House; Tubb, North
Property Code 30238	Property Name WERTA FEDERAL	Well Number 6
OGRID No. 873	Operator Name APACHE CORPORATION	Elevation 3582'

Surface Location

UL or lot No. I	Section 35	Township 19-S	Range 38-E	Lot Idn	Feet from the 2310	North/South line SOUTH	Feet from the 330	East/West line EAST	County LEA
---------------------------	----------------------	-------------------------	----------------------	---------	------------------------------	----------------------------------	-----------------------------	-------------------------------	----------------------

Bottom Hole Location If Different From Surface

UL or lot No.	Section	Township	Range	Lot Idn	Feet from the	North/South line	Feet from the	East/West line	County
Dedicated Acres 40	Joint or Infill	Consolidation Code	Order No.						

NO ALLOWABLE WILL BE ASSIGNED TO THIS COMPLETION UNTIL ALL INTERESTS HAVE BEEN CONSOLIDATED OR A NON-STANDARD UNIT HAS BEEN APPROVED BY THE DIVISION

<p>GEODETIC COORDINATES NAD 27 NME</p> <p>SURFACE LOCATION Y=589870.1 N X=876292.5 E</p> <p>LAT.=32.615710° N LONG.=103.111268° W</p> <p>LAT.=32° 36' 57" N LONG.=103° 06' 41" W</p>	<p>DETAIL</p> <p>3586.1' 3581.6'</p> <p>600'</p> <p>3584.1' 3580.0'</p>	<p>OPERATOR CERTIFICATION</p> <p>I hereby certify that the information herein is true and complete to the best of my knowledge and belief, and that this organization either owns a working interest or unleased mineral interest in the land including the proposed bottom hole location or has a right to drill this well at this location pursuant to a contract with an owner of such mineral or working interest, or to a voluntary pooling agreement or a compulsory pooling order heretofore entered by the division.</p> <p><i>Sorina L Flores</i> 4/14 Signature Date</p> <p>Sorina L Flores Printed Name</p> <p>sorina.flores@apachecorp.com E-mail Address</p>
	<p>SEE DETAIL</p> <p>S.L.</p> <p>330'</p> <p>2310'</p>	<p>SURVEYOR CERTIFICATION</p> <p>I hereby certify that the well location shown on this plat was plotted from field notes of actual surveys made by me or under my supervision, and that the same is true and correct to the best of my belief.</p> <p>DECEMBER 31, 2013</p> <p>Date of Survey</p> <p>Signature & Seal of Professional Surveyor:</p> <p>GARY G. EIDSON NEW MEXICO 12641 4/28/14</p> <p>Certificate Number Gary G. Eidson 12641 Ronald J. Eidson 3239</p> <p>BKL REGISTERED PROFESSIONAL SURVEYOR JWSC W.O.: 13.11.1334</p>

DISTRICT I
1625 N. French Dr., Hobbs, NM 88240
Phone: (575) 393-6161 Fax: (575) 393-0720

DISTRICT II
811 S. First St., Artesia, NM 88210
Phone: (575) 748-1283 Fax: (575) 748-9720

DISTRICT III
1000 Rio Brazos Road, Aztec, NM 87410
Phone: (505) 334-6178 Fax: (505) 334-6170

DISTRICT IV
1220 S. St. Francis Dr., Santa Fe, NM 87505
Phone: (505) 476-3460 Fax: (505) 476-3462

State of New Mexico
Energy, Minerals & Natural Resources Department
OIL CONSERVATION DIVISION
1220 South St. Francis Dr.
Santa Fe, New Mexico 87505

HOBBS OCD
APR 27 2015

Form C-102
Revised August 1, 2011
Submit one copy to appropriate
District Office

☐ AMENDED REPORT

RECEIVED

WELL LOCATION AND ACREAGE DEDICATION PLAT

API Number 30-025-42432	Pool Code 33230	Pool Name House; Blinbry
Property Code 30238	Property Name WERTA FEDERAL	Well Number 6
OGRID No. 873	Operator Name APACHE CORPORATION	Elevation 3582'

Surface Location

UL or lot No.	Section	Township	Range	Lot Idn	Feet from the	North/South line	Feet from the	East/West line	County
I	35	19-S	38-E		2310	SOUTH	330	EAST	LEA

Bottom Hole Location If Different From Surface

UL or lot No.	Section	Township	Range	Lot Idn	Feet from the	North/South line	Feet from the	East/West line	County

Dedicated Acres 40	Joint or Infill	Consolidation Code	Order No.
------------------------------	-----------------	--------------------	-----------

NO ALLOWABLE WILL BE ASSIGNED TO THIS COMPLETION UNTIL ALL INTERESTS HAVE BEEN CONSOLIDATED OR A NON-STANDARD UNIT HAS BEEN APPROVED BY THE DIVISION

<p>GEODETIC COORDINATES NAD 27 NME</p> <p>SURFACE LOCATION Y=589870.1 N X=876292.5 E</p> <p>LAT.=32.615710° N LONG.=103.111268° W</p> <p>LAT.=32° 36' 57" N LONG.=103° 06' 41" W</p>	<p>DETAIL</p>	<p>OPERATOR CERTIFICATION</p> <p>I hereby certify that the information herein is true and complete to the best of my knowledge and belief, and that this organization either owns a working interest or unleased mineral interest in the land including the proposed bottom hole location or has a right to drill this well at this location pursuant to a contract with an owner of such mineral or working interest, or to a voluntary pooling agreement or a compulsory pooling order heretofore entered by the division.</p> <p><i>Sorina L Flores</i> 7/4/14 Signature Date</p> <p>Sorina L Flores Printed Name</p> <p>Sorina.Flores@apachecorp.com E-mail Address</p>
		<p>SURVEYOR CERTIFICATION</p> <p>I hereby certify that the well location shown on this plat was plotted from field notes of actual surveys made by me or under my supervision, and that the same is true and correct to the best of my belief.</p> <p>DECEMBER 31, 2013</p> <p>Date of Survey</p> <p>Signature & Seal of Professional Surveyor:</p>
	<p>GARY G. EIDSON NEW MEXICO 12641</p> <p>12/28/14</p>	<p>Certificate Number Gary G. Eidson 12641 Ronald J. Eidson 3239</p>
	<p>BKL</p>	<p>TWSC W.O.: 13.11.1334</p>

DISTRICT I
1625 N. French Dr., Hobbs, NM 88240
Phone: (575) 393-6161 Fax: (575) 393-0720
DISTRICT II
811 S. First St., Artesia, NM 88210
Phone: (575) 748-1283 Fax: (575) 748-9720
DISTRICT III
1000 Rio Brazos Road, Aztec, NM 87410
Phone: (505) 334-6178 Fax: (505) 334-6170
DISTRICT IV
1220 S. St. Francis Dr., Santa Fe, NM 87505
Phone: (505) 476-3460 Fax: (505) 476-3462

State of New Mexico
Energy, Minerals & Natural Resources Department
OIL CONSERVATION DIVISION
1220 South St. Francis Dr.
Santa Fe, New Mexico 87505

HOBBSOCD

APR 27 2015

Form C-102
Revised August 1, 2011
Submit one copy to appropriate
District Office

AMENDED REPORT

WELL LOCATION AND ACREAGE DEDICATION PLAT

RECEIVED

API Number 30-025-42432	Pool Code 30238	Pool Name House; ABO
Property Code 30238	Property Name WERTA FEDERAL	Well Number 6
OGRID No. 873	Operator Name APACHE CORPORATION	Elevation 3582'

Surface Location

UL or lot No. I	Section 35	Township 19-S	Range 38-E	Lot Idn	Feet from the 2310	North/South line SOUTH	Feet from the 330	East/West line EAST	County LEA
---------------------------	----------------------	-------------------------	----------------------	---------	------------------------------	----------------------------------	-----------------------------	-------------------------------	----------------------

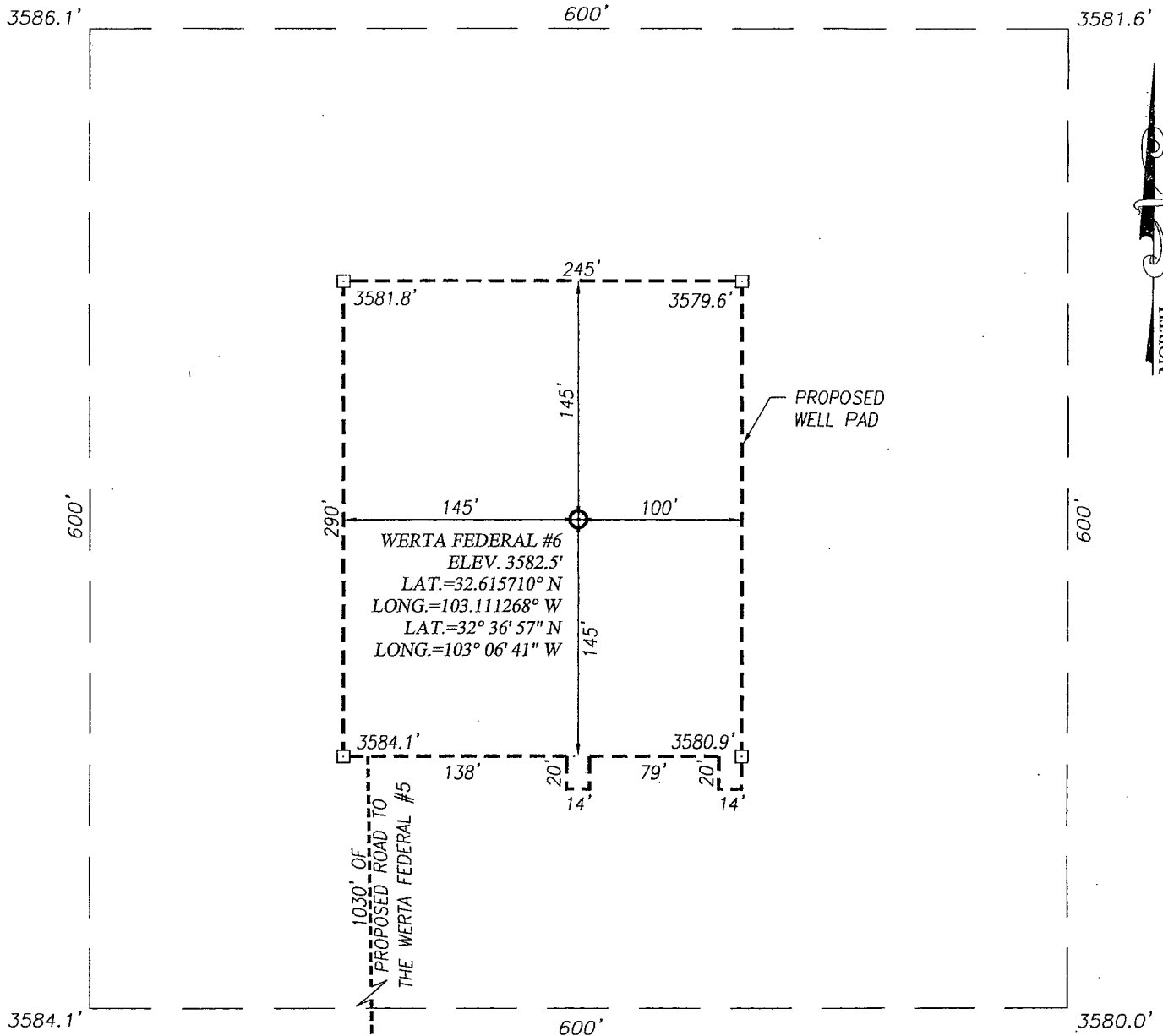
Bottom Hole Location If Different From Surface

UL or lot No.	Section	Township	Range	Lot Idn	Feet from the	North/South line	Feet from the	East/West line	County
---------------	---------	----------	-------	---------	---------------	------------------	---------------	----------------	--------

Dedicated Acres 40	Joint or Infill	Consolidation Code	Order No.
------------------------------	-----------------	--------------------	-----------

NO ALLOWABLE WILL BE ASSIGNED TO THIS COMPLETION UNTIL ALL INTERESTS HAVE BEEN CONSOLIDATED OR A NON-STANDARD UNIT HAS BEEN APPROVED BY THE DIVISION

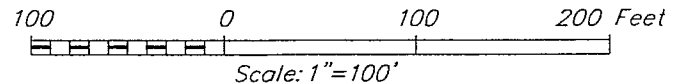
<p>GEODETIC COORDINATES NAD 27 NME</p> <p>SURFACE LOCATION Y=589870.1 N X=876292.5 E</p> <p>LAT.=32.615710° N LONG.=103.111268° W</p> <p>LAT.=32° 36' 57" N LONG.=103° 06' 41" W</p>	<p>DETAIL</p> <p>3586.1' 3581.6'</p> <p>600'</p> <p>3584.1' 3580.0'</p>	<p>OPERATOR CERTIFICATION</p> <p>I hereby certify that the information herein is true and complete to the best of my knowledge and belief, and that this organization either owns a working interest or unleased mineral interest in the land including the proposed bottom hole location or has a right to drill this well at this location pursuant to a contract with an owner of such mineral or working interest, or to a voluntary pooling agreement or a compulsory pooling order heretofore entered by the division.</p> <p><i>Sorina L. Flores</i> 4/14 Signature Date</p> <p>Sorina L Flores Printed Name</p> <p>Sorina.flores@apachecorp.com E-mail Address</p>
	<p>SEE DETAIL</p> <p>S.L. 330'</p> <p>2310'</p>	<p>SURVEYOR CERTIFICATION</p> <p>I hereby certify that the well location shown on this plat was plotted from field notes of actual surveys made by me or under my supervision, and that the same is true and correct to the best of my belief.</p> <p>DECEMBER 31, 2013</p>
	<p>DATE OF SURVEY</p> <p>SIGNATURE & SEAL OF PROFESSIONAL SURVEYOR:</p>	<p>GARY G. EIDSON NEW MEXICO 12641 2/28/14</p>
	<p>CERTIFICATE NUMBER</p> <p>BKL PROFESSIONAL SURVEYOR</p>	<p>GARY G. EIDSON 12641 RONALD J. EIDSON 3239 JWSC W.O.: 13.11.1334</p>



NOTE:
SEE "LOCATION VERIFICATION MAP"
FOR PROPOSED ROAD LOCATION.

DIRECTIONS TO LOCATION

FROM THE INTERSECTION OF ST. HIGHWAY 18 (EUNICE HWY) AND TIPTON ROAD; GO EAST ON TIPTON RD. APPROX. 0.5 MILES; TURN LEFT AND GO NORTHEAST APPROX. 400 FEET; VEER RIGHT AND GO SOUTHEAST APPROX. 170 FEET; VEER LEFT AND GO EAST APPROX. 0.2 MILES; TURN LEFT AND GO NORTH 100 FEET TO THE SOUTHWEST CORNER OF AN EXISTING WELL PAD. FROM THE NORTHEAST CORNER OF THIS EXISTING WELL PAD, FOLLOW A STAKED PROPOSED ROAD TO THE WERTA FEDERAL #5 WELL EAST APPROX. 396 FEET, THEN NORTH 410 FEET TO THE SOUTHWEST CORNER OF THE PROPOSED WERTA FEDERAL #5 WELL PAD. CONTINUE NORTH 290 FEET TO THE NORTHWEST CORNER OF THE PROPOSED WERTA FEDERAL #5 WELL PAD TO A STAKED PROPOSED ROAD TO THE WERTA FEDERAL #6 WELL PAD. FOLLOW THIS STAKED ROAD NORTH APPROX. 1030 FEET TO THE SOUTHWEST CORNER OF THE WERTA FEDERAL #6 PROPOSED WELL PAD. THIS LOCATION STAKE IS NORTHEAST APPROX. 195 FEET.



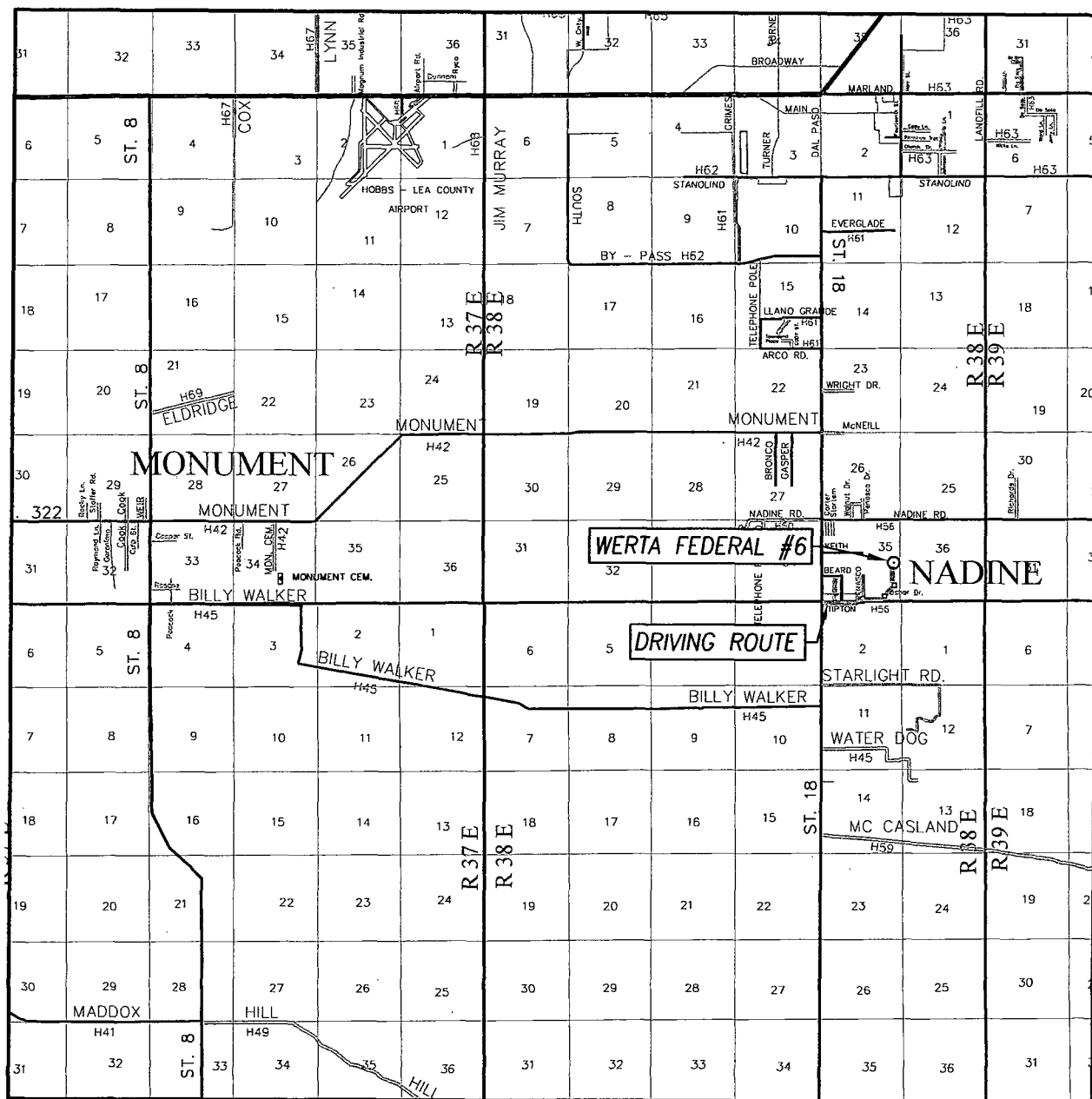
APACHE CORPORATION

WERTA FEDERAL #6 WELL
LOCATED 2310 FEET FROM THE SOUTH LINE
AND 330 FEET FROM THE EAST LINE OF SECTION 35,
TOWNSHIP 19 SOUTH, RANGE 38 EAST, N.M.P.M.,
LEA COUNTY, NEW MEXICO

PROVIDING SURVEYING SERVICES
SINCE 1946
JOHN WEST SURVEYING COMPANY
412 N. DAL PASO
HOBBS, N.M. 88240
(575) 393-3117 www.jwsc.biz

Survey Date: 12/31/13	CAD Date: 1/25/14	Drawn By: BKL
W.O. No.: 13111334	Rev: .	Rel. W.O.: Sheet 1 of 1

VICINITY MAP



SCALE: 1" = 2 MILES
DRIVING ROUTE: SEE LOCATION VERIFICATION MAP

SEC. 35 TWP. 19-S RGE. 38-E

SURVEY N.M.P.M.

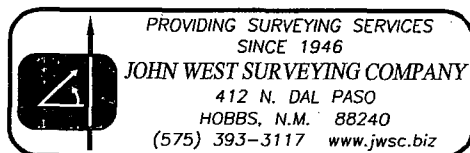
COUNTY LEA STATE NEW MEXICO

DESCRIPTION 2310' FSL & 330' FEL

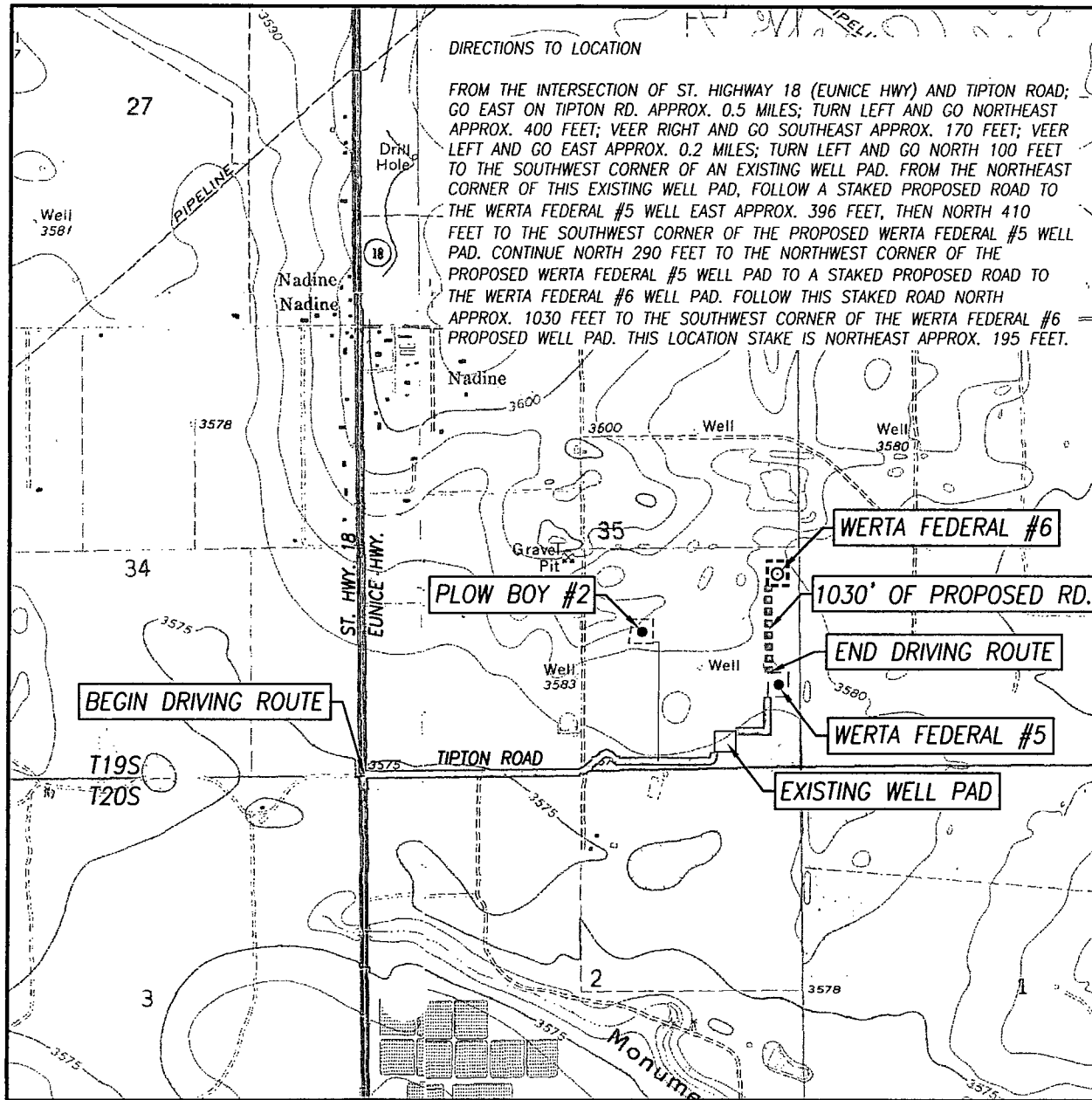
ELEVATION 3582'

OPERATOR APACHE CORPORATION

LEASE WERTA FEDERAL



LOCATION VERIFICATION MAP



SCALE: 1" = 2000'

CONTOUR INTERVAL:

HOBBS EAST - 5'

HOBBS WEST - 5'

HOBBS SOUTHWEST - 5'

HOBBS SOUTHEAST - 5'

SEC. 35 TWP. 19-S RGE. 38-E

SURVEY N.M.P.M.

COUNTY LEA STATE NEW MEXICO

DESCRIPTION 2310' FSL & 330' FEL

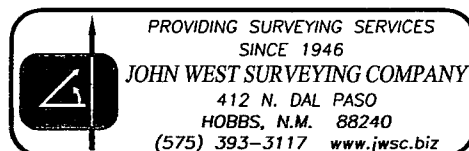
ELEVATION 3582'

OPERATOR APACHE CORPORATION

LEASE WERTA FEDERAL

U.S.G.S. TOPOGRAPHIC MAP

HOBBS SOUTHEAST, N.M.



PRIVATE SURFACE OWNER AGREEMENT

OPERATOR: APACHE CORPORATION

WELL NAME: WERTA FEDERAL #6

UL: I SECTION: 35 TOWNSHIP: 19S RANGE: 38E

LOCATION: 2310' FSL & 330' FEL COUNTY: LEA STATE: NM

LEASE NUMBER: NM-14812

STATEMENT OF SURFACE USE

The surface to the subject land is owned by APACHE CORPORATION
303 VETERANS AIRPARK LN #1000
MIDLAND, TX 79705 432-818-1000

The surface owner has been contacted regarding the drilling of the subject well, and an agreement for surface use has been negotiated.

CERTIFICATION: I hereby certify that the statements made in this statement are to the best of my knowledge, true and correct.

NAME: MAXWELL GROVE

SIGNATURE: 

DATE: 3/19/2014

TITLE: DRILLING ENGINEER

To expedite your Application to Drill please fax the completed form to the
Bureau of Land Management (575) 234-5927 or (575) 885-9264
Attn: Legal Instruments Examiner
620 E. Green Street
Carlsbad, NM 88220

The original document with signature should be mailed as soon as possible.