

MAY 18 2015

District I  
1625 N. French Dr., Hobbs, NM 88240  
Phone: (575) 393-6161 Fax: (575) 393-0720

District II  
511 S. First St., Artesia, NM 88210  
Phone: (575) 748-1283 Fax: (575) 748-0720

District III  
1000 Rio Brazos Road, Aztec, NM 87410  
Phone: (505) 334-6178 Fax: (505) 334-6170

District IV  
1220 S. St. Francis Dr., Santa Fe, NM 87505  
Phone: (505) 476-3460 Fax: (505) 476-3462

State of New Mexico  
Energy, Minerals & Natural Resources Department  
OIL CONSERVATION DIVISION  
1220 South St. Francis Dr.  
Santa Fe, NM 87505

RECEIVED

Form C-102

Revised August 1, 2011

Submit one copy to appropriate

District Office

☐ AMENDED REPORT

## WELL LOCATION AND ACREAGE DEDICATION PLAT

|  |  |  |
|--|--|--|
| <sup>1</sup> API Number<br><b>30-025-42563</b> | <sup>2</sup> Pool Code<br><b>4-6310</b>                                    | <sup>3</sup> Pool Name<br><b>MIDWAY, BONE SPRING</b> |
| <sup>4</sup> Property Code<br><b>714810</b>    | <sup>5</sup> Property Name<br><b>PLINY 28-33 STATE COM</b>                 | <sup>6</sup> Well Number<br><b>1H</b>                |
| <sup>7</sup> OGRID No.<br><b>6137</b>          | <sup>8</sup> Operator Name<br><b>DEVON ENERGY PRODUCTION COMPANY, L.P.</b> | <sup>9</sup> Elevation<br><b>3754.4</b>              |

<sup>10</sup> Surface Location

| UL or lot no. | Section   | Township    | Range       | Lot Idn | Feet from the | North/South line | Feet from the | East/West line | County     |
|---------------|-----------|-------------|-------------|---------|---------------|------------------|---------------|----------------|------------|
| <b>E</b>      | <b>28</b> | <b>17 S</b> | <b>37 E</b> |         | <b>2483</b>   | <b>NORTH</b>     | <b>425</b>    | <b>WEST</b>    | <b>LEA</b> |

<sup>11</sup> Bottom Hole Location If Different From Surface

| UL or lot no. | Section   | Township    | Range       | Lot Idn | Feet from the | North/South line | Feet from the | East/West line | County     |
|---------------|-----------|-------------|-------------|---------|---------------|------------------|---------------|----------------|------------|
| <b>M</b>      | <b>33</b> | <b>17 S</b> | <b>37 E</b> |         | <b>330</b>    | <b>SOUTH</b>     | <b>400</b>    | <b>WEST</b>    | <b>LEA</b> |

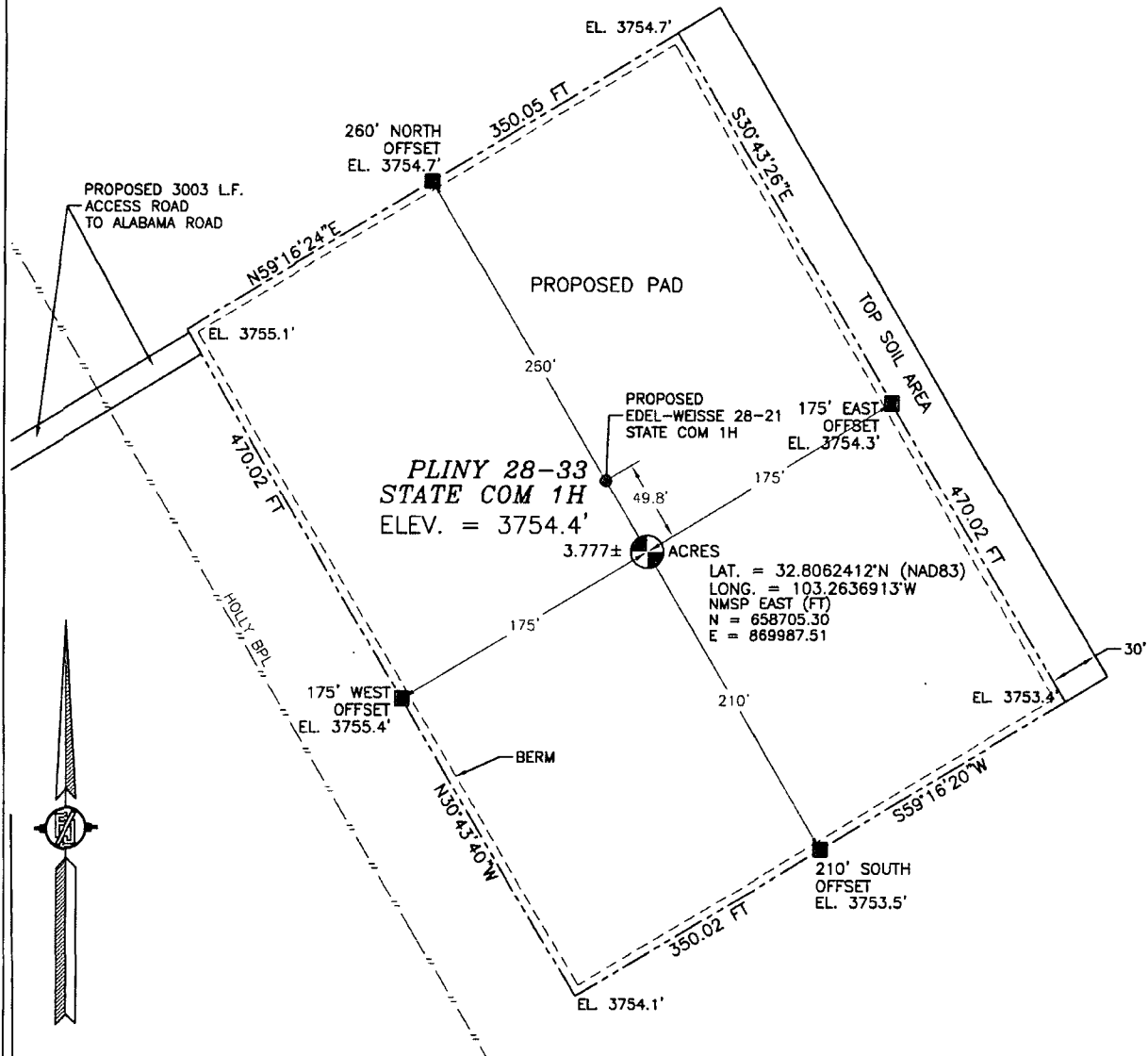
| <sup>12</sup> Dedicated Acres | <sup>13</sup> Joint or Infill | <sup>14</sup> Consolidation Code | <sup>15</sup> Order No. |
|-------------------------------|-------------------------------|----------------------------------|-------------------------|
| <b>240.00</b>                 |                               |                                  |                         |

No allowable will be assigned to this completion until all interests have been consolidated or a non-standard unit has been approved by the division.

|  |  |  |  |   |
|--|--|--|--|---|
| <p>NW CORNER SEC. 28<br/>LAT. = 32.8130672°N<br/>LONG. = 103.2650800°W<br/>NMSP EAST (FT)<br/>N = 861184.58<br/>E = 869535.71</p> <p>W/4 CORNER SEC. 28<br/>LAT. = 32.8058062°N<br/>LONG. = 103.2650738°W<br/>NMSP EAST (FT)<br/>N = 868542.75<br/>E = 869564.30</p> <p>SECTION CORNER<br/>LAT. = 32.7985352°N<br/>LONG. = 103.2650577°W<br/>NMSP EAST (FT)<br/>N = 855897.30<br/>E = 869595.97</p> <p>W/4 CORNER SEC. 33<br/>LAT. = 32.7912622°N<br/>LONG. = 103.2650463°W<br/>NMSP EAST (FT)<br/>N = 853251.11<br/>E = 869626.19</p> <p>SW CORNER SEC. 33<br/>LAT. = 32.7839909°N<br/>LONG. = 103.2650321°W<br/>NMSP EAST (FT)<br/>N = 850605.59<br/>E = 869657.27</p> |  | <p>N/4 CORNER SEC. 28<br/>SCALED</p> <p>PLINY 28-33 STATE COM 1H<br/>ELEV. = 3754.4'<br/>LAT. = 32.8082412°N (NAD83)<br/>LONG. = 103.2636913°W<br/>NMSP EAST (FT)<br/>N = 858705.30<br/>E = 869987.51</p> <p>QUARTER CORNER<br/>SCALED</p> <p>SECTION CORNER<br/>LAT. = 32.7984849°N<br/>LONG. = 103.2477924°W<br/>NMSP EAST (FT)<br/>N = 855933.02<br/>E = 874901.68</p> <p>E/4 CORNER SEC. 33<br/>LAT. = 32.7912126°N<br/>LONG. = 103.2477664°W<br/>NMSP EAST (FT)<br/>N = 853287.16<br/>E = 874937.44</p> <p>SE CORNER SEC. 33<br/>LAT. = 32.7838617°N<br/>LONG. = 103.2477237°W<br/>NMSP EAST (FT)<br/>N = 850612.73<br/>E = 874977.39</p> |  | <p><sup>17</sup> OPERATOR CERTIFICATION</p> <p>I hereby certify that the information contained herein is true and complete to the best of my knowledge and belief, and that this organization either owns a working interest or unleased mineral interest in the land including the proposed bottom hole location or has a right to drill this well at this location pursuant to a contract with an owner of such a mineral or working interest, or to a voluntary pooling agreement or a compulsory pooling order heretofore entered by the division.</p> <p><i>Tami Laird</i> 5/5/15<br/>Signature Date</p> <p>Tami Laird, Regulatory Compliance Professional<br/>Printed Name</p> <p>tami.laird@dmn.com<br/>E-mail Address</p> |
| <p>Completion Interval</p> <p>Lease Lines</p> <p>Project Interval</p> <p>SEC. 28</p> <p>NM VO-9142</p> <p>SEC. 33</p> <p>NOTE: LATITUDE AND LONGITUDE COORDINATES ARE SHOWN USING THE NORTH AMERICAN DATUM OF 1983 (NAD83). LISTED NEW MEXICO STATE PLANE EAST COORDINATES ARE GRID (NAD83). BASIS OF BEARING AND DISTANCES USED ARE NEW MEXICO STATE PLANE EAST COORDINATES MODIFIED TO THE SURFACE.</p> <p>BOTTOM OF HOLE<br/>LAT. = 32.7848945°N<br/>LONG. = 103.2637327°W<br/>NMSP EAST (FT)<br/>N = 850938.32<br/>E = 870053.32</p> <p>BOTTOM OF HOLE<br/>LAT. = 32.7839691°N<br/>LONG. = 103.2564371°W<br/>NMSP EAST (FT)<br/>N = 850624.41<br/>E = 872298.98</p>  |  | <p><sup>18</sup> SURVEYOR CERTIFICATION</p> <p>I hereby certify that the well location shown on this plat was plotted from field notes of actual surveys made by me or under my supervision, and that the same is true and correct to the best of my knowledge.</p> <p>FEBRUARY 13, 2015<br/>Date of Survey</p> <p>(12797)</p> <p><i>Filmon F. Jaramillo</i><br/>Signature and Seal of Professional Surveyor</p> <p>Certificate Number: FILMON F. JARAMILLO, PLS 12797</p> <p>SURVEY NO. 3591</p>  |  |   |

SECTION 28, TOWNSHIP 17 SOUTH, RANGE 37 EAST, N.M.P.M.  
LEA COUNTY, STATE OF NEW MEXICO  
SITE MAP

NOTE: LATITUDE AND LONGITUDE COORDINATES ARE SHOWN USING THE NORTH AMERICAN DATUM OF 1983 (NAD83). LISTED NEW MEXICO STATE PLANE EAST COORDINATES ARE GRID (NAD83). BASIS OF BEARING AND DISTANCES USED ARE NEW MEXICO STATE PLANE EAST COORDINATES MODIFIED TO THE SURFACE.



010 50 100 200

SCALE 1" = 100'

DIRECTIONS TO LOCATION

FROM THE INTERSECTION OF STATE HWY 18 AND COUNTY ROAD ALABAMA STREET GO WEST ON ALABAMA STREET 2.74 MILES ABOUT A MILE PAST END OF PAVEMENT TO PROPOSED ROAD ON RIGHT GO NORTH ON PROPOSED ROAD 3003 LF (0.56 MILES) TO NORTHWEST CORNER OF PROPOSED PAD

DEVON ENERGY PRODUCTION COMPANY, L.P.

PLINY 28-33 STATE COM 1H

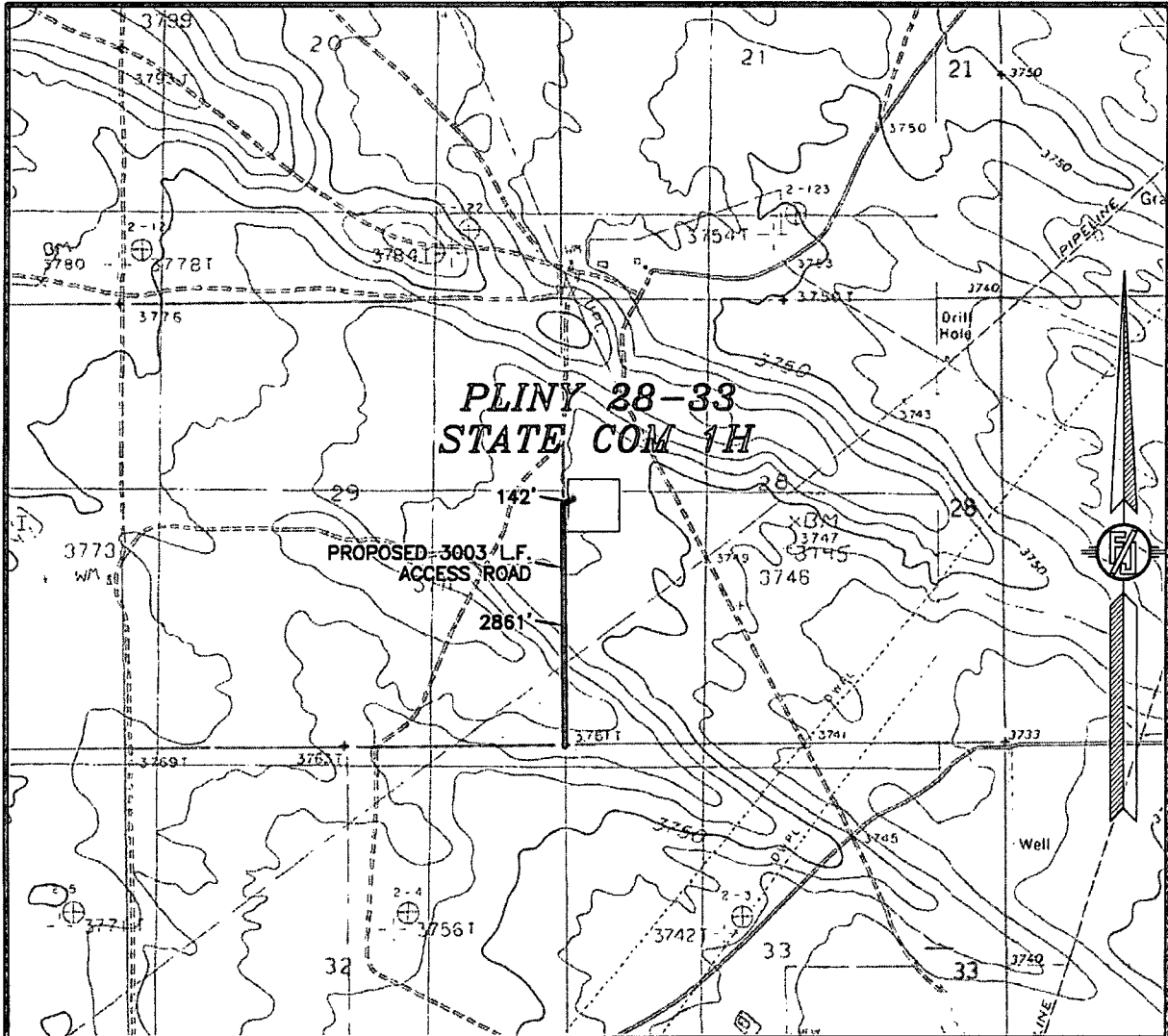
LOCATED 2483 FT. FROM THE NORTH LINE  
AND 425 FT. FROM THE WEST LINE OF  
SECTION 28, TOWNSHIP 17 SOUTH,  
RANGE 37 EAST, N.M.P.M.  
LEA COUNTY, STATE OF NEW MEXICO

FEBRUARY 13, 2015

SURVEY NO. 3591

MADRON SURVEYING, INC. 301 SOUTH CANAL (575) 234-3341 CARLSBAD, NEW MEXICO

SECTION 28, TOWNSHIP 17 SOUTH, RANGE 37 EAST, N.M.P.M.  
LEA COUNTY, STATE OF NEW MEXICO  
LOCATION VERIFICATION MAP



USGS QUAD MAP:  
LOVINGTON SE

NOT TO SCALE

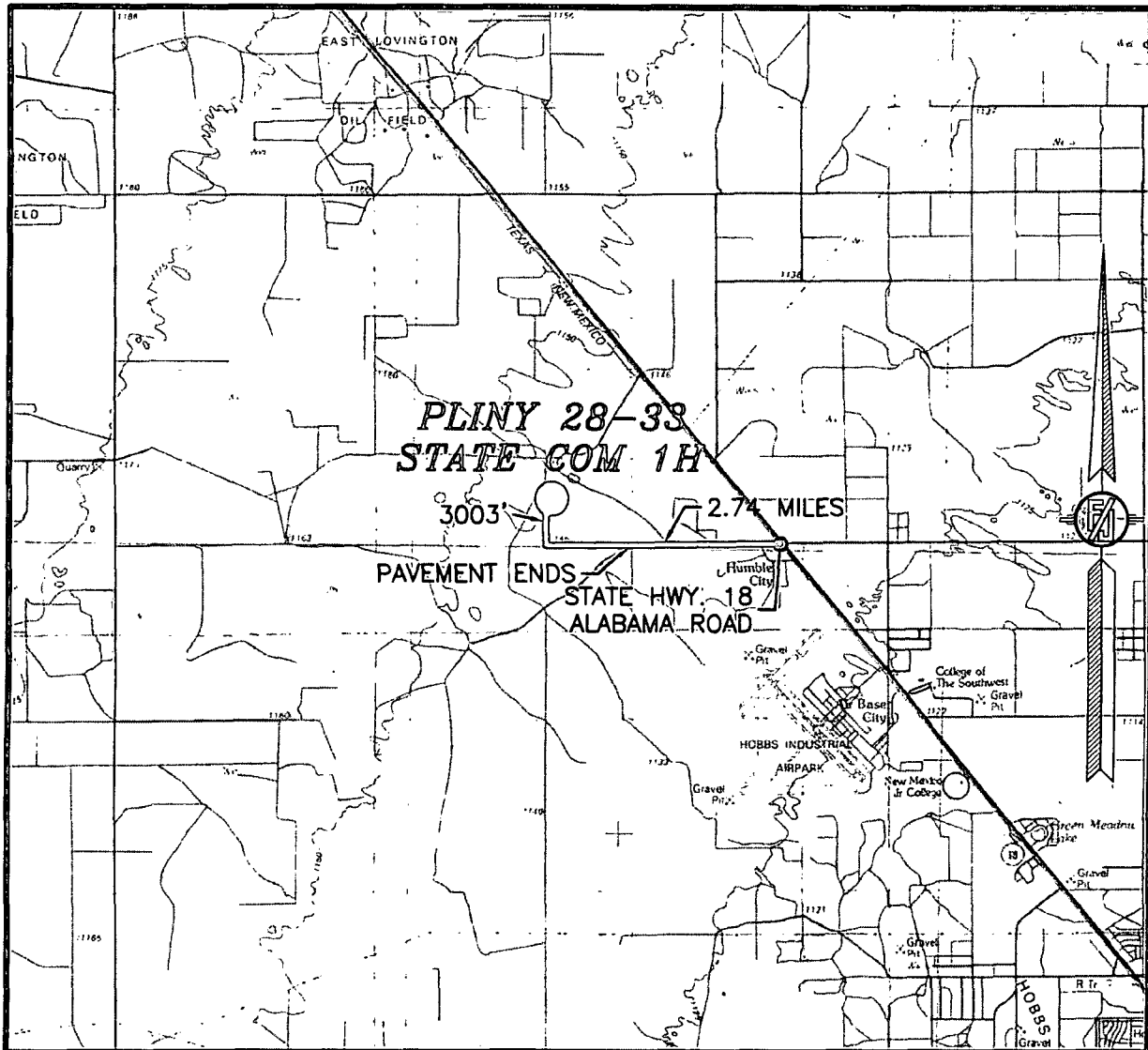
DEVON ENERGY PRODUCTION COMPANY, L.P.  
**PLINY 28-33 STATE COM 1H**  
LOCATED 2483 FT. FROM THE NORTH LINE  
AND 425 FT. FROM THE WEST LINE OF  
SECTION 28, TOWNSHIP 17 SOUTH,  
RANGE 37 EAST, N.M.P.M.  
LEA COUNTY, STATE OF NEW MEXICO

FEBRUARY 13, 2015

SURVEY NO. 3591

MADRON SURVEYING, INC. 301 SOUTH CANAL (575) 234-3341 CARLSBAD, NEW MEXICO

SECTION 28, TOWNSHIP 17 SOUTH, RANGE 37 EAST, N.M.P.M.  
LEA COUNTY, STATE OF NEW MEXICO  
VICINITY MAP



DISTANCES IN MILES

NOT TO SCALE

**DIRECTIONS TO LOCATION**

FROM THE INTERSECTION OF STATE HWY 18 AND COUNTY ROAD ALABAMA STREET GO WEST ON ALABAMA STREET 2.74 MILES ABOUT A MILE PAST END OF PAVEMENT TO PROPOSED ROAD ON RIGHT GO NORTH ON PROPOSED ROAD 3003 LF (0.58 MILES) TO NORTHWEST CORNER OF PROPOSED PAD

**DEVON ENERGY PRODUCTION COMPANY, L.P.**

**PLINY 28-33 STATE COM 1H**

LOCATED 2483 FT. FROM THE NORTH LINE  
AND 425 FT. FROM THE WEST LINE OF  
SECTION 28, TOWNSHIP 17 SOUTH,  
RANGE 37 EAST, N.M.P.M.  
LEA COUNTY, STATE OF NEW MEXICO

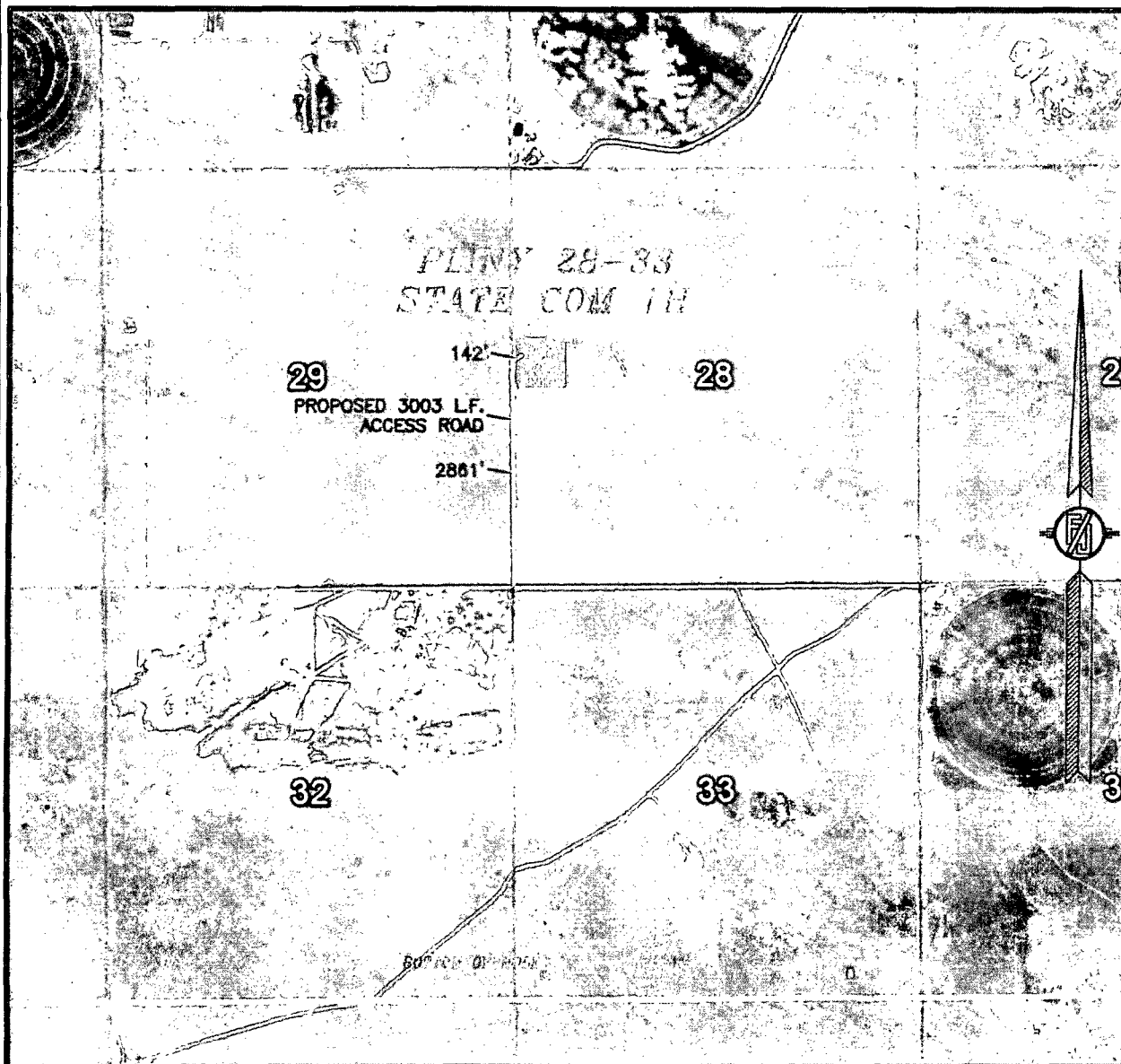
FEBRUARY 13, 2015

SURVEY NO. 3591

MADRON SURVEYING, INC. 301 SOUTH CANAL (575) 234-3341

CARLSBAD, NEW MEXICO

SECTION 28, TOWNSHIP 17 SOUTH, RANGE 37 EAST, N.M.P.M.  
LEA COUNTY, STATE OF NEW MEXICO  
**AERIAL PHOTO**



NOT TO SCALE  
AERIAL PHOTO:  
GOOGLE EARTH  
FEB. 2014

**DEVON ENERGY PRODUCTION COMPANY, L.P.**  
**PLINY 28-33 STATE COM 1H**

LOCATED 2483 FT. FROM THE NORTH LINE  
AND 425 FT. FROM THE WEST LINE OF  
SECTION 28, TOWNSHIP 17 SOUTH,  
RANGE 37 EAST, N.M.P.M.  
LEA COUNTY, STATE OF NEW MEXICO

FEBRUARY 13, 2015

SURVEY NO. 3591

MADRON SURVEYING, INC. 301 SOUTH CANAL (575) 234-3341 CARLSBAD, NEW MEXICO

SECTION 28, TOWNSHIP 17 SOUTH, RANGE 37 EAST, N.M.P.M.  
LEA COUNTY, STATE OF NEW MEXICO  
AERIAL ACCESS ROUTE MAP



NOT TO SCALE  
AERIAL PHOTO:  
GOOGLE EARTH  
FEB. 2014

DEVON ENERGY PRODUCTION COMPANY, L.P.  
PLINY 28-33 STATE COM 1H  
LOCATED 2483 FT. FROM THE NORTH LINE  
AND 425 FT. FROM THE WEST LINE OF  
SECTION 28, TOWNSHIP 17 SOUTH,  
RANGE 37 EAST, N.M.P.M.  
LEA COUNTY, STATE OF NEW MEXICO

FEBRUARY 13, 2015

SURVEY NO. 3591

MADRON SURVEYING, INC. 301 SOUTH CANAL  
(575) 234-3341

CARLSBAD, NEW MEXICO