

District I  
1625 N. French Dr., Hobbs, NM 88240  
Phone: (575) 393-6161 Fax: (575) 393-0720  
District II  
811 S. First St., Artesia, NM 88210  
Phone: (575) 748-1283 Fax: (575) 748-9720  
District III  
1000 Rio Brazos Road, Aztec, NM 87410  
Phone: (505) 334-6178 Fax: (505) 334-6170  
District IV  
1220 S. St. Francis Dr., Sante Fe, NM 87505  
Phone: (505) 476-3460 Fax: (505) 476-3462

State of New Mexico  
Energy, Minerals & Natural Resources  
Department  
OIL CONSERVATION DIVISION  
1220 South St. Francis Dr.  
Sante Fe, NM 87505

FORM C-102

Revised August 1, 2011

Submit one copy to appropriate

District Office

RECEIVED

☐ AMENDED REPORT

WELL LOCATION AND ACREAGE DEDICATION PLAT

<sup>1</sup> API Number 30-025- <b>42584</b>	<sup>2</sup> Pool Code 97838	<sup>3</sup> Pool Name Jennings; Bone Spring Upper Shale
<sup>4</sup> Property Code <b>314850</b>	<sup>5</sup> Property Name <b>ALMOST EDDY 31 FED</b>	<sup>6</sup> Well Number <b>#1H</b>
<sup>7</sup> OGRID No. 7377	<sup>8</sup> Operator Name <b>EOG RESOURCES, INC.</b>	<sup>9</sup> Elevation <b>3281'</b>

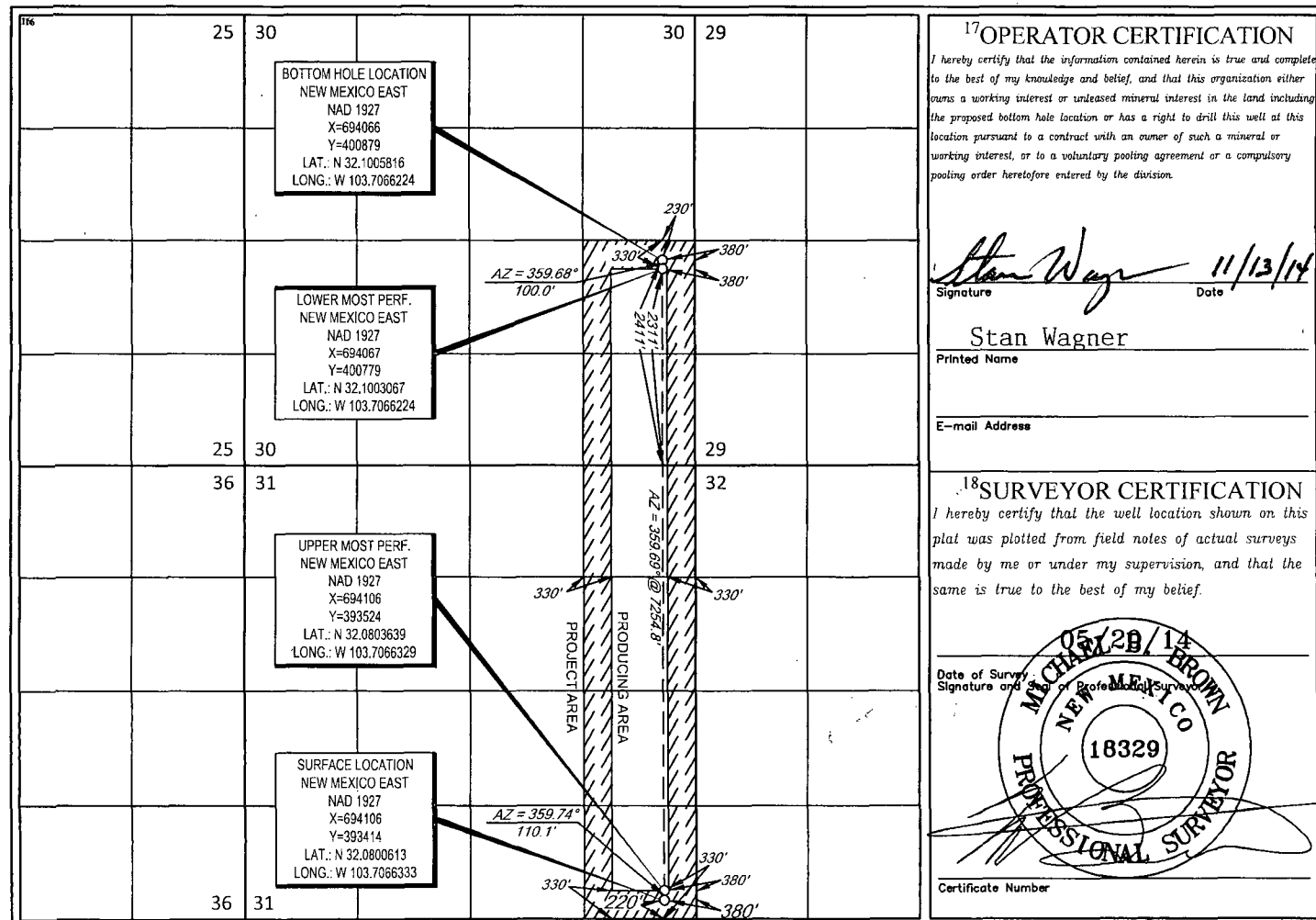
<sup>10</sup>Surface Location

UL or lot no.	Section	Township	Range	Lot Idn	Feet from the	North/South line	Feet from the	East/West line	County
P	31	25-S	32-E	-	220'	SOUTH	380'	EAST	LEA

UL or lot no.	Section	Township	Range	Lot Idn	Feet from the	North/South line	Feet from the	East/West line	County
I	30	25-S	32-E	-	2411'	SOUTH	380'	EAST	LEA

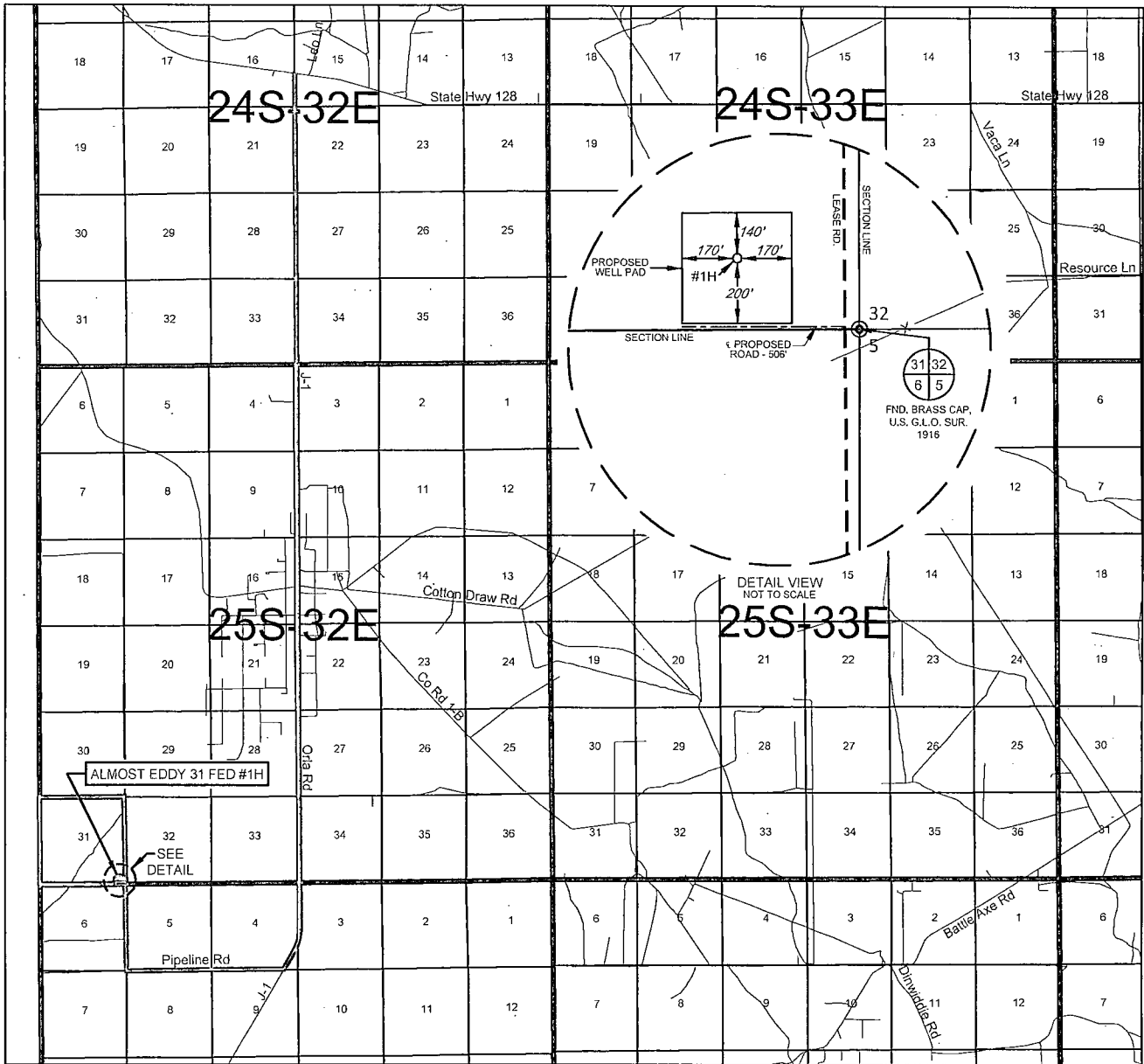
<sup>12</sup> Dedicated Acres <b>240.00</b>	<sup>13</sup> Joint or Infill	<sup>14</sup> Consolidation Code	<sup>15</sup> Order No.
--	-------------------------------	----------------------------------	-------------------------

No allowable will be assigned to this completion until all interests have been consolidated or a non-standard unit has been approved by the division.



MAY 26 2015

# EXHIBIT 2 VICINITY MAP



LEASE NAME & WELL NO.: ALMOST EDDY 31 FED #1H

SECTION 31 TWP 25-S RGE 32-E SURVEY N.M.P.M.

COUNTY LEA STATE NM

DESCRIPTION 220' FSL & 380' FEL

DISTANCE & DIRECTION FROM INT. OF NM-18 N & NM-128, GO WEST ON NM-128 W ±30.0 MILES, THENCE SOUTH (LEFT) ON J-1/ORLA RD. ±10.5 MILES, THENCE WEST (RIGHT) ON PIPELINE RD. ±1.9 MILES, THENCE NORTH (RIGHT) ON LEASE RD. ±1.1 MILES TO A POINT ±506 FEET SOUTH OF THE LOCATION.



SCALE: 1" = 10000'  
0' 5000' 10000'



**TOPOGRAPHIC**  
LOYALTY INNOVATION LEGACY

1400 EVERMAN PARKWAY, Ste. 197 • FT. WORTH, TEXAS 76140

TELEPHONE: (817) 744-7512 • FAX (817) 744-7548

2903 NORTH BIG SPRING • MIDLAND, TEXAS 79705

TELEPHONE: (432) 682-1653 OR (800) 767-1653 • FAX (432) 682-1743

WWW.TOPOGRAPHIC.COM

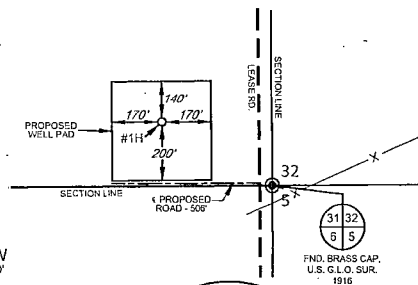
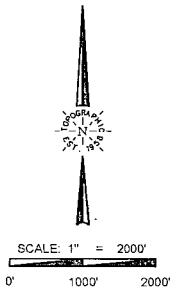
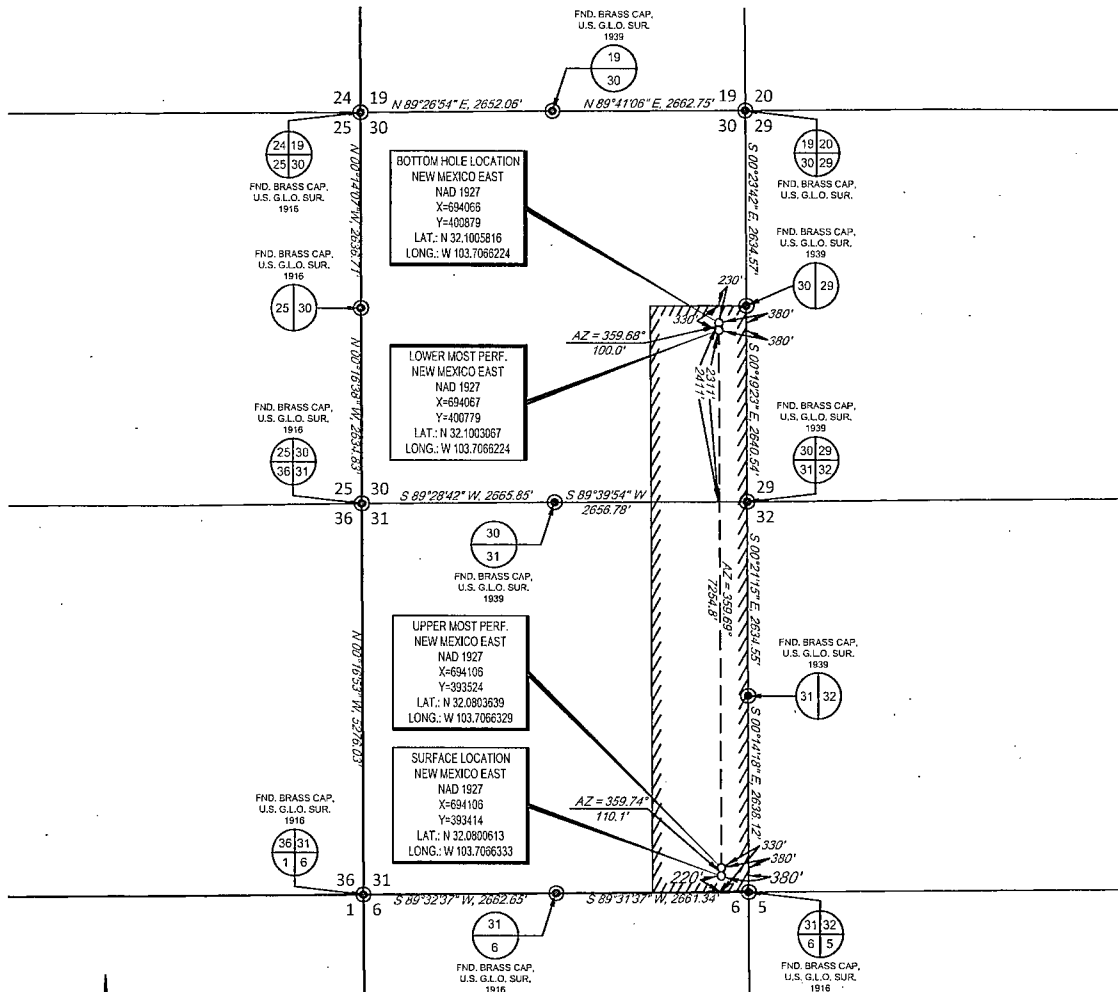
THIS EASEMENT/SERVITUDE LOCATION SHOWN HEREON HAS BEEN SURVEYED ON THE GROUND UNDER MY SUPERVISION AND PREPARED ACCORDING TO THE EVIDENCE FOUND AT THE TIME OF SURVEY, AND DATA PROVIDED BY EOG RESOURCES, INC. THIS CERTIFICATION IS MADE AND LIMITED TO THOSE PERSONS OR ENTITIES SHOWN ON THE FACE OF THIS PLAT AND IS NON-TRANSFERABLE. THIS SURVEY IS CERTIFIED FOR THIS TRANSACTION ONLY.

ALL BEARINGS, DISTANCES, AND COORDINATE VALUES CONTAINED HEREON ARE GRID BASED UPON THE NEW MEXICO STATE PLANE COORDINATE SYSTEM, EAST ZONE OF THE NORTH AMERICAN DATUM 1927, U.S. SURVEY FEET.



## EXHIBIT 2A

SECTION 31, TOWNSHIP 25 SOUTH, RANGE 32 EAST, N.M.P.M.  
LEA COUNTY, NEW MEXICO

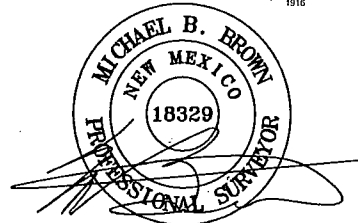


DETAIL VIEW  
SCALE: 1" = 500'

LEASE NAME & WELL NO.: ALMOST EDDY 31 FED #1H

SECTION 31 TWP 25-S RGE 32-E SURVEY N.M.P.M.  
COUNTY LEA STATE NM  
DESCRIPTION 220' FSL & 380' FEL

DISTANCE & DIRECTION FROM INT. OF NM-18 N & NM-128, GO WEST ON  
NM-128 W ±30.0 MILES, THENCE SOUTH (LEFT) ON J-1/ORLA RD. ±10.5 MILES,  
THENCE WEST (RIGHT) ON PIPELINE RD. ±1.9 MILES, THENCE NORTH (RIGHT)  
ON LEASE RD. ±1.1 MILES TO A POINT ±506 FEET SOUTH OF THE LOCATION.



Michael Blake Brown, P.S. No. 18329  
JUNE 24, 2014

ALL BEARINGS, DISTANCES, AND COORDINATE VALUES CONTAINED HEREON ARE GRID  
BASED UPON THE NEW MEXICO STATE PLANE COORDINATE SYSTEM, EAST ZONE OF THE  
NORTH AMERICAN DATUM 1927, U.S. SURVEY FEET

THIS EASEMENT/SERVITUDE LOCATION SHOWN HEREON HAS BEEN SURVEYED ON THE GROUND  
UNDER MY SUPERVISION AND PREPARED ACCORDING TO THE EVIDENCE FOUND AT THE TIME OF  
SURVEY, AND DATA PROVIDED BY EOG RESOURCES, INC. THIS CERTIFICATION IS MADE AND LIMITED  
TO THOSE PERSONS OR ENTITIES SHOWN ON THE FACE OF THIS PLAT AND IS NON-TRANSFERABLE.  
THIS SURVEY IS CERTIFIED FOR THIS TRANSACTION ONLY.

ORIGINAL DOCUMENT SIZE: 8.5" X 14"



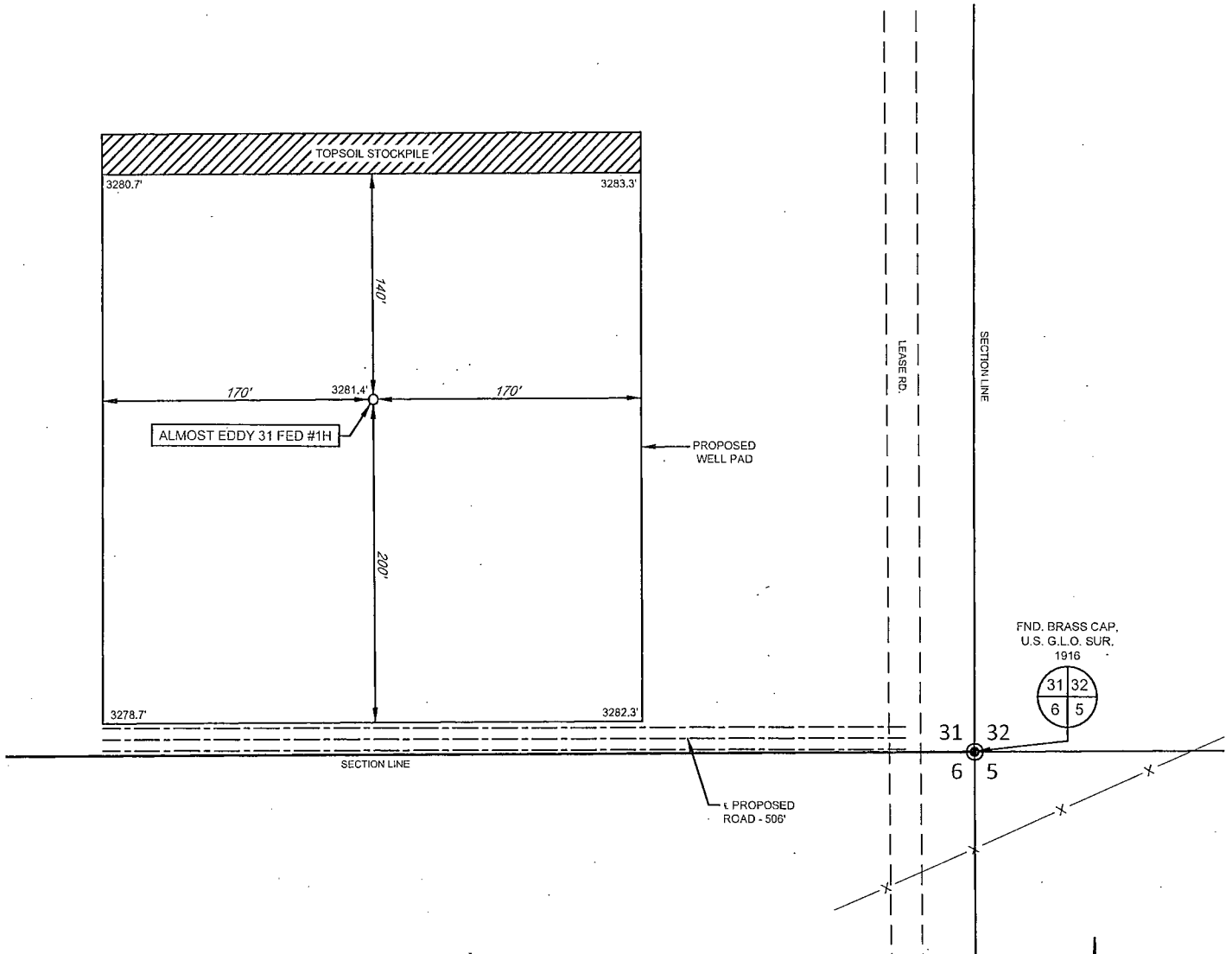
1400 EVERMAN PARKWAY, Ste. 197 • FT. WORTH, TEXAS 76140  
TELEPHONE: (817) 744-7512 • FAX (817) 744-7548  
2903 NORTH BIG SPRING • MIDLAND, TEXAS 79705  
TELEPHONE: (432) 682-1653 OR (800) 767-1653 • FAX (432) 682-1743  
WWW.TOPOGRAPHIC.COM



# EXHIBIT 2B

SECTION 31, TOWNSHIP 25 SOUTH, RANGE 32 EAST, N.M.P.M.  
LEA COUNTY, NEW MEXICO

DETAIL VIEW  
SCALE: 1" = 100'



LEASE NAME & WELL NO.: ALMOST EDDY 31 FED #1H  
#1H LATITUDE N 32.0800613 #1H LONGITUDE W 103.7066333

## LEGEND

== == == == EXISTING ROAD  
— SECTION LINE  
— EXISTING PIPELINE

ALL BEARINGS, DISTANCES, AND COORDINATE VALUES CONTAINED HEREON ARE GRID BASED UPON THE NEW MEXICO STATE PLANE COORDINATE SYSTEM, EAST ZONE OF THE NORTH AMERICAN DATUM 1927, U.S. SURVEY FEET

THIS PROPOSED PAD SITE LOCATION SHOWN HEREON HAS BEEN SURVEYED ON THE GROUND UNDER MY SUPERVISION AND PREPARED ACCORDING TO THE EVIDENCE FOUND AT THE TIME OF SURVEY, AND DATA PROVIDED BY EOG RESOURCES, INC. THIS CERTIFICATION IS MADE AND LIMITED TO THOSE PERSONS OR ENTITIES SHOWN ON THE FACE OF THIS PLAT AND IS NON-TRANSFERABLE. THIS SURVEY IS CERTIFIED FOR THIS TRANSACTION ONLY.



**TOPOGRAPHIC**  
LOYALTY INNOVATION LEGACY

1400 EVERMAN PARKWAY, Ste. 197 • FT. WORTH, TEXAS 76140  
TELEPHONE: (817) 744-7512 • FAX (817) 744-7548  
2903 NORTH BIG SPRING • MIDLAND, TEXAS 79705  
TELEPHONE: (432) 682-1653 OR (800) 767-1653 • FAX (432) 682-1743  
WWW.TOPOGRAPHIC.COM

ORIGINAL DOCUMENT SIZE: 8.5" X 11"

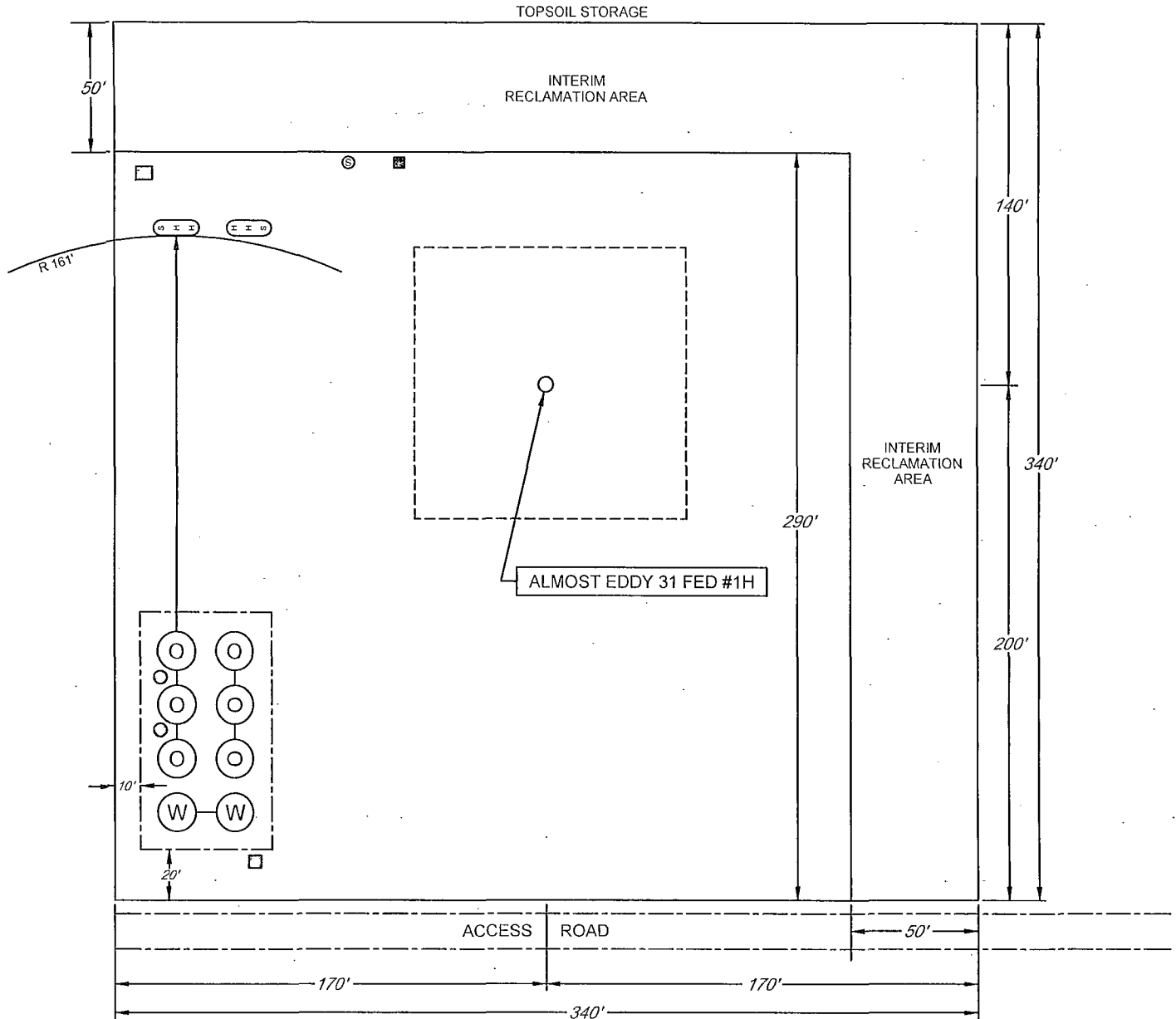
# EXHIBIT 2C

## RECLAMATION AND FACILITY DIAGRAM - PRODUCTION FACILITIES DIAGRAM



SECTION 31, TOWNSHIP 25 SOUTH, RANGE 32 EAST, N.M.P.M.  
LEA COUNTY, NEW MEXICO

DETAIL VIEW  
SCALE: 1" = 60'



LEASE NAME & WELL NO.: ALMOST EDDY 31 FED #1H  
#1H LATITUDE N 32.0800613 #1H LONGITUDE W 103.7066333

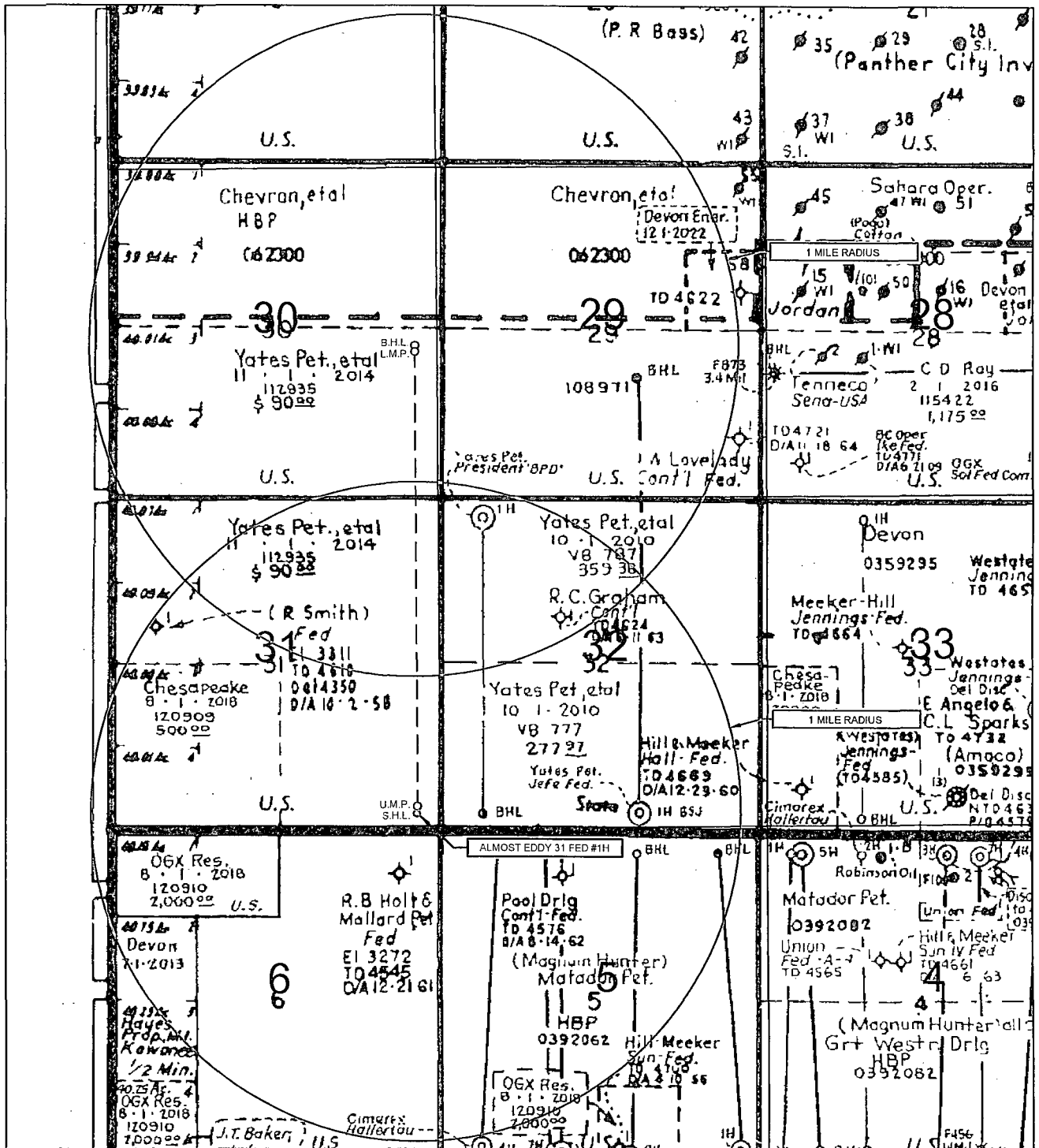
### LEGEND

	500 BBL OIL TANK		FLARE SEPARATOR
	500 BBL WATER TANK		VRU
	36 x 15 HEATER/SEPARATOR		48 X 25 VRT
			FP FLARE
			OP FLARE

# EXHIBIT 3



**EOG resources, Inc.**  
SECTION 31, TOWNSHIP 25 SOUTH, RANGE 32 EAST, N.M.P.M.  
LEA COUNTY, NEW MEXICO



LEASE NAME & WELL NO.: ALMOST EDDY 31 FED #1H

SCALE: NTS

#1H LATITUDE N 32.0800613

#1H LONGITUDE W 103.7066333

## LEGEND

- — — — — EXISTING ROAD
- — — — — SECTION LINE
- — — — — EXISTING PIPELINE
- — — — — OHE — OVERHEAD ELECTRIC
- — — — — FENCE LINE



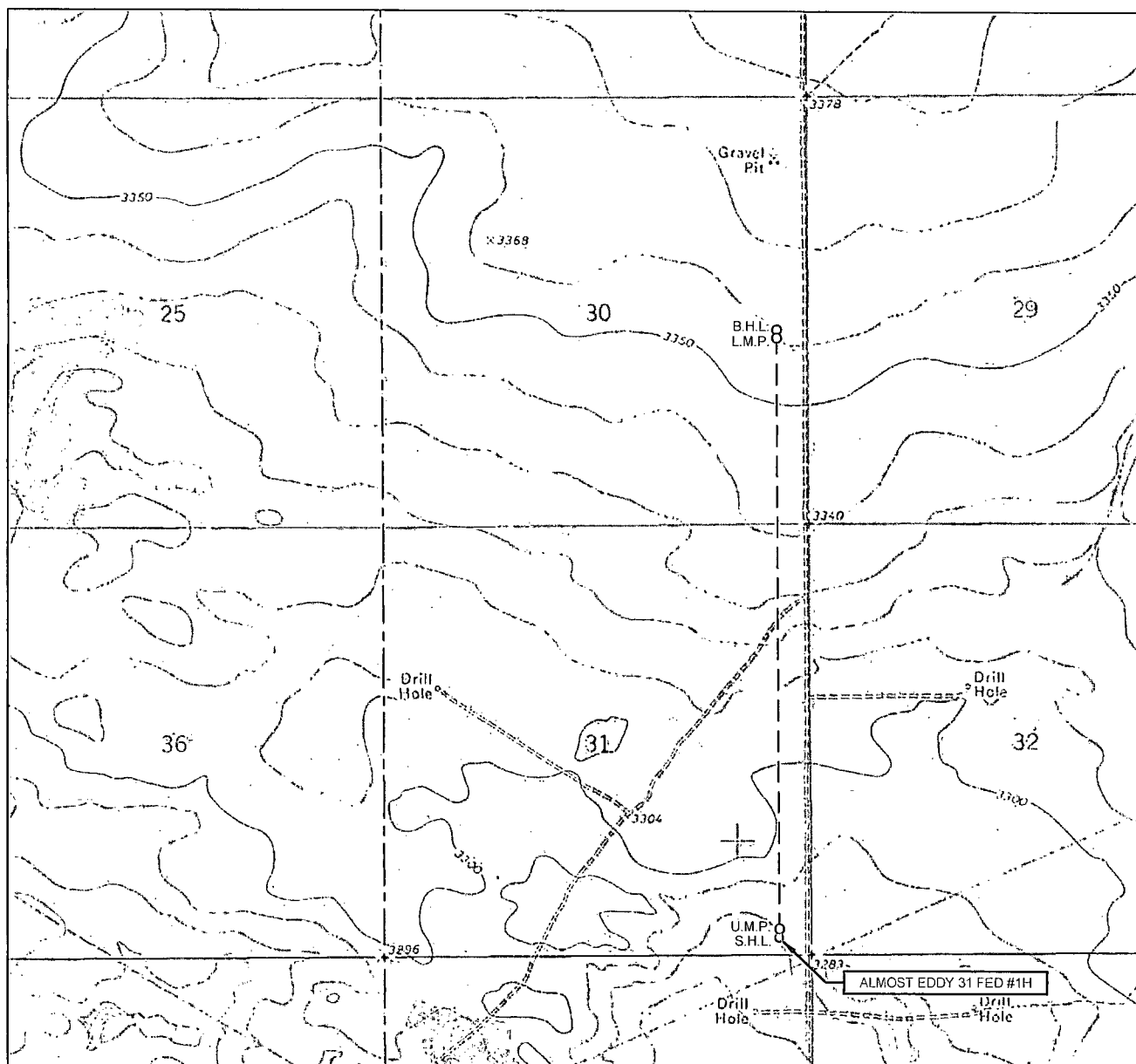
**TOPOGRAPHIC**  
LOYALTY. INNOVATION. LEGACY

1400 EVERMAN PARKWAY, Ste. 197 • FT. WORTH, TEXAS 76140  
TELEPHONE: (817) 744-7512 • FAX: (817) 744-7548  
2903 NORTH BIG SPRING • MIDLAND, TEXAS 79705  
TELEPHONE: (432) 682-1653 OR (800) 767-1653 • FAX: (432) 682-1743  
WWW.TOPOGRAPHIC.COM

ALL BEARINGS, DISTANCES, AND COORDINATE VALUES CONTAINED HEREON ARE GRID BASED UPON THE NEW MEXICO STATE PLANE COORDINATE SYSTEM, EAST ZONE OF THE NORTH AMERICAN DATUM 1927, U.S. SURVEY FEET

THIS EASEMENT/SERVITUDE LOCATION SHOWN HEREON HAS BEEN SURVEYED ON THE GROUND UNDER MY SUPERVISION AND PREPARED ACCORDING TO THE EVIDENCE FOUND AT THE TIME OF SURVEY, AND DATA PROVIDED BY EOG RESOURCES, INC. THIS CERTIFICATION IS MADE AND LIMITED TO THOSE PERSONS OR ENTITIES SHOWN ON THE FACE OF THIS PLAT AND IS NON-TRANSFERABLE. THIS SURVEY IS CERTIFIED FOR THIS TRANSACTION ONLY.

# LOCATION & ELEVATION VERIFICATION MAP



LEASE NAME & WELL NO.: ALMOST EDDY 31 FED #1H

SECTION 31 TWP 25-S RGE 32-E SURVEY N.M.P.M.  
 COUNTY LEA STATE NM ELEVATION 3281'  
 DESCRIPTION 220' FSL & 380' FEL

LATITUDE N 32.0800613 LONGITUDE W 103.7066333



SCALE: 1" = 2000'  
 0' 1000' 2000'

THIS EASEMENT/SERVITUDE LOCATION SHOWN HEREON HAS BEEN SURVEYED ON THE GROUND UNDER MY SUPERVISION AND PREPARED ACCORDING TO THE EVIDENCE FOUND AT THE TIME OF SURVEY, AND DATA PROVIDED BY EOG RESOURCES, INC. THIS CERTIFICATION IS MADE AND LIMITED TO THOSE PERSONS OR ENTITIES SHOWN ON THE FACE OF THIS PLAT AND IS NON-TRANSFERABLE. THIS SURVEY IS CERTIFIED FOR THIS TRANSACTION ONLY.

ALL BEARINGS, DISTANCES, AND COORDINATE VALUES CONTAINED HEREON ARE GRID BASED UPON THE NEW MEXICO STATE PLANE COORDINATE SYSTEM, EAST ZONE OF THE NORTH AMERICAN DATUM 1927, U.S. SURVEY FEET.

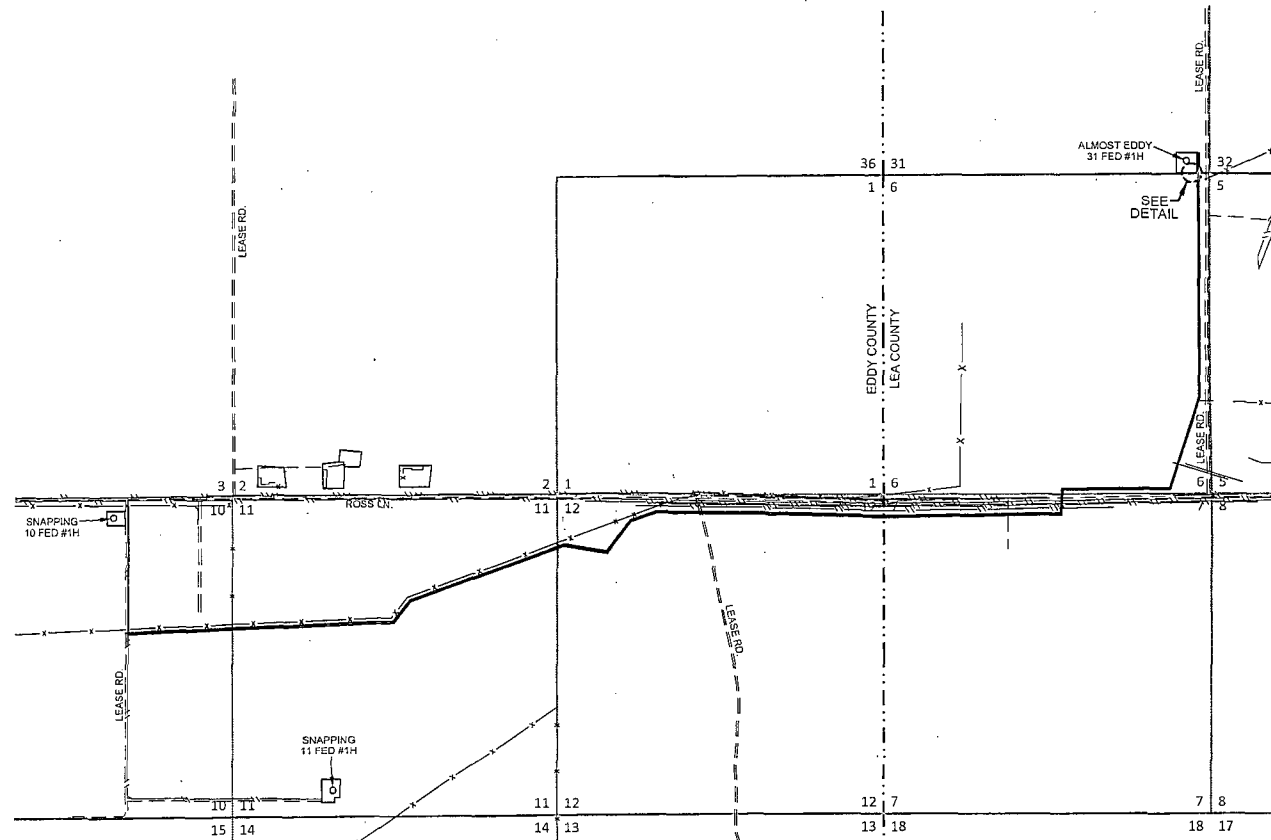
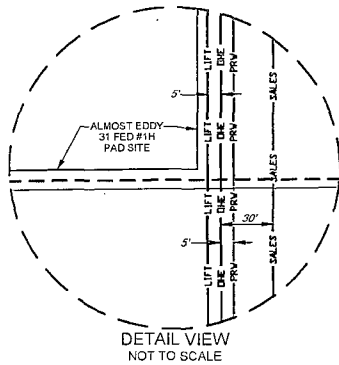
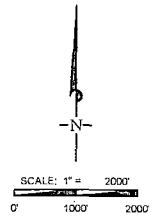


**TOPOGRAPHIC**  
 LOYALTY INNOVATION LEGACY

1400 EVERMAN PARKWAY, Ste. 197 • FT. WORTH, TEXAS 76140  
 TELEPHONE: (817) 744-7512 • FAX (817) 744-7548  
 2903 NORTH BIG SPRING • MIDLAND, TEXAS 79705  
 TELEPHONE: (432) 682-1653 OR (800) 767-1653 • FAX (432) 682-1743  
 WWW.TOPOGRAPHIC.COM

# EXHIBIT 5 ALMOST EDDY 31 FED #1H INFRASTRUCTURE MAP

SECTION 31, TOWNSHIP 25 SOUTH, RANGE 32 EAST, N.M.P.M.  
LEA COUNTY, NEW MEXICO



---	PROPOSED ROAD	.....509 FT
---	-TOTAL FOOTAGES	
---	1-4" POLY GAS LIFT LINE	.....23,801 FT
---	(WORKING PRESSURE 75-125 PSI)	
---	-TOTAL FOOTAGES	
---	ELECTRIC LINE	.....23,810 FT
---	-TOTAL FOOTAGES	
---	2-4" POLY SWD LINES	.....23,819 FT
---	(WORKING PRESSURE 75-125 PSI)	
---	-TOTAL FOOTAGES	
---	4" GAS SALES LINE	.....25,822 FT
---	(WORKING PRESSURE 75-125 PSI)	
---	-TOTAL FOOTAGES	

ALMOST EDDY 31 FED #1H INFRASTRUCTURE MAP	REVISION:	
	INT	DATE
DATE: 06/25/14		
FILE: SX ALMOST EDDY 31 FED #1H INFRASTRUCTURE MAP		
DRAWN BY: S.V.		
SHEET: 1 OF 1		

 **eog resources, inc.**