

District I  
1625 N. French Dr., Hobbs, NM 88240  
Phone: (575) 393-6161 Fax: (575) 392-0720  
District II  
311 S. First St., Artesia, NM 88210  
Phone: (575) 748-1283 Fax: (575) 748-9720  
District III  
1000 Rio Brazos Road, Aztec, NM 87410  
Phone: (505) 334-6178 Fax: (505) 334-6170  
District IV  
1220 S. St. Francis Dr., Santa Fe, NM 87505  
Phone: (505) 476-3469 Fax: (505) 476-3462

State of New Mexico  
Energy, Minerals & Natural Resources Department  
OIL CONSERVATION DIVISION  
1220 South St. Francis Dr.  
Santa Fe, NM 87505

HOBBS OCD

MAY 26 2015

RECEIVED

Form C-102  
Revised August 1, 2011  
Submit one copy to appropriate  
District Office

☐ AMENDED REPORT

WELL LOCATION AND ACREAGE DEDICATION PLAT

<sup>1</sup> API Number <b>30-025-42588</b>		<sup>2</sup> Pool Code <b>78039</b>	<sup>3</sup> Pool Name <b>WC-025 G-06 S173230A; Wolfcamp</b>
<sup>4</sup> Property Code <b>40291</b>	<sup>5</sup> Property Name <b>CUTTHROAT FEDERAL</b>		<sup>6</sup> Well Number <b>8</b>
<sup>7</sup> OGRID No. <b>13837</b>	<sup>8</sup> Operator Name <b>MACK ENERGY CORPORATION</b>		<sup>9</sup> Elevation <b>3941.8</b>

<sup>10</sup> Surface Location

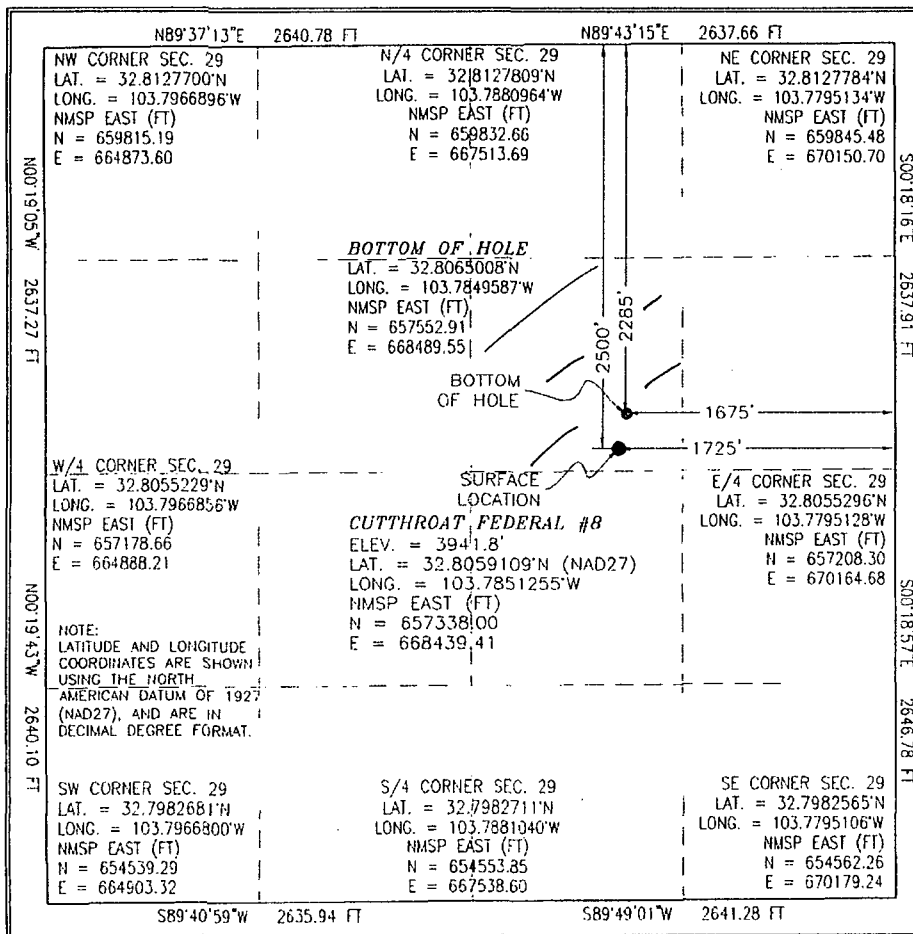
UL or lot no.	Section	Township	Range	Lot Idn	Feet from the	North/South line	Feet from the	East/West line	County
<b>G</b>	<b>29</b>	<b>17</b>	<b>32 E</b>		<b>2500</b>	<b>NORTH</b>	<b>1725</b>	<b>EAST</b>	<b>LEA</b>

<sup>11</sup> Bottom Hole Location If Different From Surface

UL or lot no.	Section	Township	Range	Lot Idn	Feet from the	North/South line	Feet from the	East/West line	County
<b>G</b>	<b>29</b>	<b>17</b>	<b>32 E</b>		<b>2285</b>	<b>NORTH</b>	<b>1675</b>	<b>EAST</b>	<b>LEA</b>

<sup>12</sup> Dedicated Acres <b>40</b>	<sup>13</sup> Joint or Infill	<sup>14</sup> Consolidation Code	<sup>15</sup> Order No.
--	-------------------------------	----------------------------------	-------------------------

No allowable will be assigned to this completion until all interests have been consolidated or a non-standard unit has been approved by the division.



<sup>17</sup> OPERATOR CERTIFICATION

I hereby certify that the information contained herein is true and complete to the best of my knowledge and belief, and that this organization either owns a working interest or unleased mineral interest in the land including the proposed bottom hole location or has a right to drill this well at this location pursuant to a contract with an owner of such a mineral or working interest, or to a voluntary pooling agreement or a compulsory pooling order heretofore entered by the division.

*Jerry W. Sherrell* 9/16/13  
Signature Date

Jerry W. Sherrell  
Printed Name

jerrys@mec.com  
E-mail Address

<sup>18</sup> SURVEYOR CERTIFICATION

I hereby certify that the well location shown on this plat was plotted from field notes of actual surveys made by me or under my supervision, and that the same is true and correct to the best of my belief.

SEPTEMBER 13 2013

Date of Survey

*[Signature]*  
Signature and Seal of Professional Surveyor

Certificate Number FID-MON-11-AR-AMH.LLO. PLS 12797  
SURVEY NO. 219918

MAY 26 2015

# SITE MAP

CUTTHROAT FEDERAL #8  
BOTTOM HOLE

EL. 3741.6' EL. 3943.5'

PROPOSED PAD  
2.168 ACRES

315' 165' 150'

150'

*CUTTHROAT FEDERAL #8*  
ELEV. = 3941.8'

LAT. = 32.8059109°N (NAD27)  
LONG. = 103.7851255°W  
NMSP EAST (FT)  
N = 657338.00  
E = 668439.41

300'

150'

BERM

315'

EL. 3942.4' EL. 3938.2'

TOPSOIL AREA

PROPOSED 165.2 LF  
ACCESS ROAD

EXIST. PAD  
CONOCO-PHILLIPS  
MCA UNIT #319

CONOCO-PHILLIPS  
MCA UNIT #319

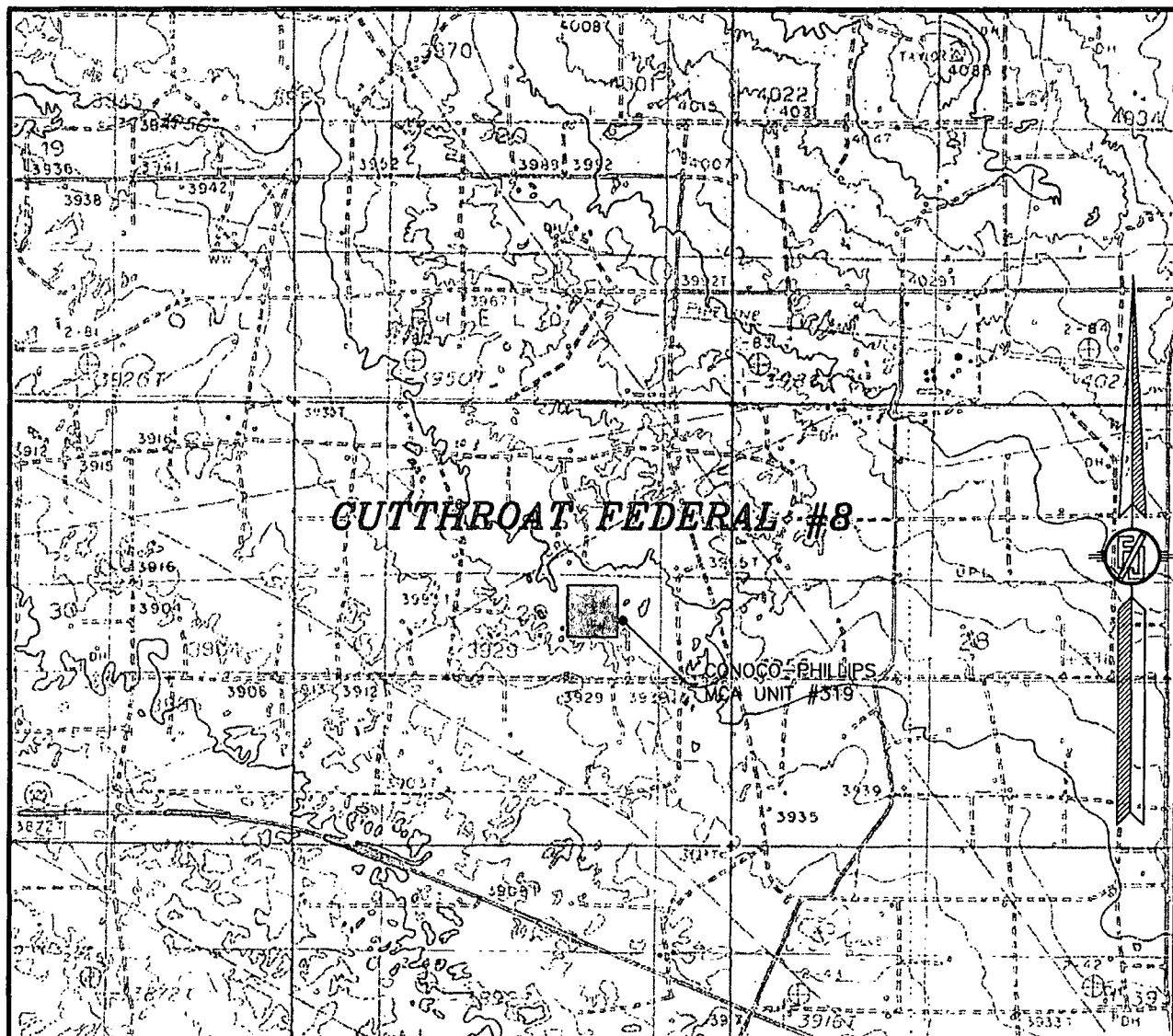
FROM THE INTERSECTION OF MALJAMAR ROAD AND CONOCO ROAD GO WEST ON CONOCO ROAD APPROX. 1.1 MILES. TURN LEFT AND GO SOUTH APPROX. 0.4 MILES. TURN RIGHT AND GO WEST APPROX. 0.5 MILES. TURN LEFT AND GO SOUTH APPROX. 0.5 MILES. TURN LEFT AND GO EAST APPROX. 0.4 MILES. TURN LEFT AND GO NORTH APPROX. 618' TO THE SOUTHEAST CORNER OF EXISTING MCA #319. THEN FROM THE SOUTHWEST CORNER OF MCA #319 LOCATION IS APPROX. 383' NORTHWEST.

**MACK ENERGY CORPORATION**  
**CUTTHROAT FEDERAL #8**  
**LOCATED 2500 FT. FROM THE NORTH LINE**  
**AND 1725 FT. FROM THE EAST LINE OF**  
**SECTION 29, TOWNSHIP 17 SOUTH,**  
**RANGE 32 EAST, N.M.P.M.**  
**LEA COUNTY, STATE OF NEW MEXICO**

**MADRON SURVEYING, INC.** 301 SOUTH CANAL  
(575) 234-3341

CARLSBAD, NEW MEXICO

SECTION 29, TOWNSHIP 17 SOUTH, RANGE 32 EAST, N.M.P.M.  
LEA COUNTY, STATE OF NEW MEXICO  
LOCATION VERIFICATION MAP



USGS QUAD MAP:  
MALJAMAR

NOT TO SCALE

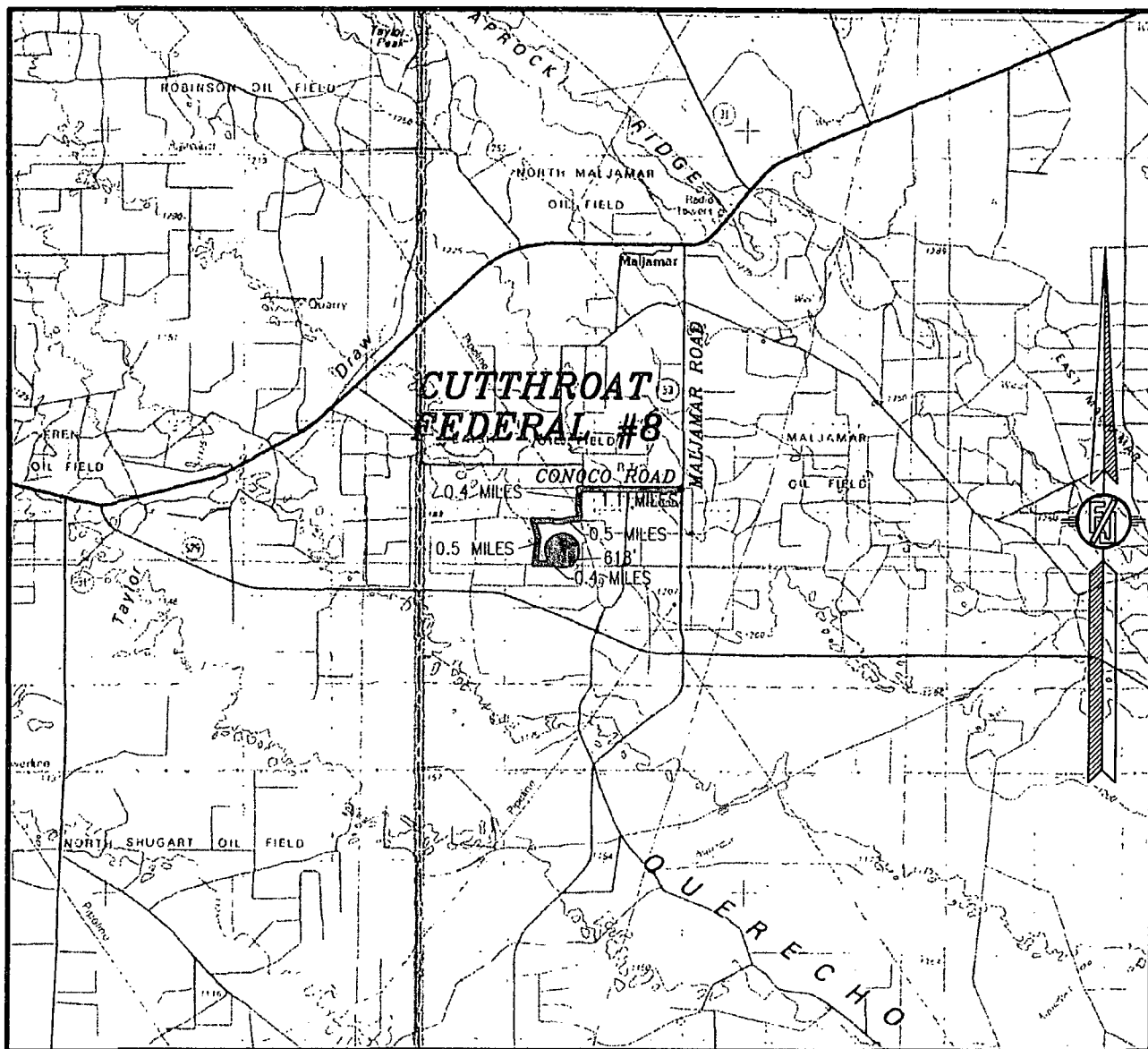
**MACK ENERGY CORPORATION**  
**CUTTHROAT FEDERAL #8**  
LOCATED 2500 FT. FROM THE NORTH LINE  
AND 1725 FT. FROM THE EAST LINE OF  
SECTION 29, TOWNSHIP 17 SOUTH,  
RANGE 32 EAST, N.M.P.M.  
LEA COUNTY, STATE OF NEW MEXICO

SEPTEMBER 13, 2013

SURVEY NO. 2199B

MADRON SURVEYING, INC. 301 SOUTH CANAL (575) 234-3341 CARLSBAD, NEW MEXICO

SECTION 29, TOWNSHIP 17 SOUTH, RANGE 32 EAST, N.M.P.M.  
LEA COUNTY, STATE OF NEW MEXICO  
VICINITY MAP



NOT TO SCALE

**MACK ENERGY CORPORATION**  
**CUTTHROAT FEDERAL #8**

LOCATED 2500 FT. FROM THE NORTH LINE  
AND 1725 FT. FROM THE EAST LINE OF  
SECTION 29, TOWNSHIP 17 SOUTH,  
RANGE 32 EAST, N.M.P.M.  
LEA COUNTY, STATE OF NEW MEXICO

**DIRECTIONS TO LOCATION**

FROM THE INTERSECTION OF MALJAMAR ROAD AND CONOCO ROAD GO  
WEST ON CONOCO ROAD APPROX. 1.1 MILES. TURN LEFT AND GO  
SOUTH APPROX. 0.4 MILES. TURN RIGHT AND GO WEST APPROX. 0.5  
MILES. TURN LEFT AND GO SOUTH APPROX. 0.5 MILES. TURN LEFT  
AND GO EAST APPROX. 0.4 MILES. TURN LEFT AND GO NORTH APPROX.  
618' TO THE SOUTHEAST CORNER OF EXISTING MCA #319. THEN FROM THE  
SOUTHWEST CORNER OF MCA #319 LOCATION IS APPROX. 363' NORTHWEST.

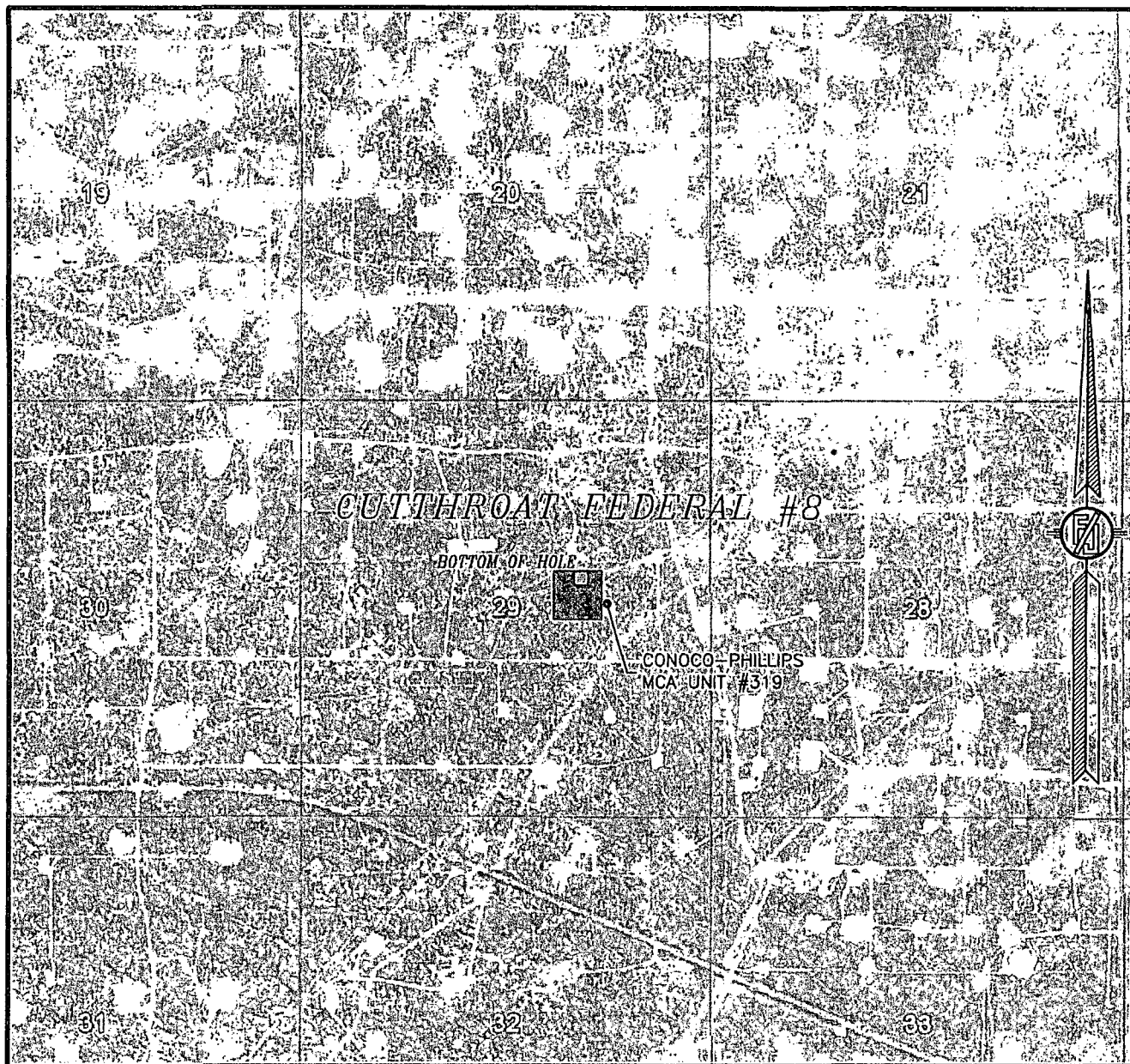
SEPTEMBER 13, 2013

SURVEY NO. 2199B

MADRON SURVEYING, INC. 301 SOUTH CANAL (575) 234-3341

CARLSBAD, NEW MEXICO

SECTION 29, TOWNSHIP 17 SOUTH, RANGE 32 EAST, N.M.P.M.  
LEA COUNTY, STATE OF NEW MEXICO  
AERIAL PHOTO



NOT TO SCALE  
AERIAL PHOTO:  
GOOGLE EARTH  
MARCH 2012

**MACK ENERGY CORPORATION**  
**CUTTHROAT FEDERAL #8**  
LOCATED 2500 FT. FROM THE NORTH LINE  
AND 1725 FT. FROM THE EAST LINE OF  
SECTION 29, TOWNSHIP 17 SOUTH,  
RANGE 32 EAST, N.M.P.M.  
LEA COUNTY, STATE OF NEW MEXICO

SEPTEMBER 13, 2013

SURVEY NO. 2199B

MADRON SURVEYING, INC. 301 SOUTH CANAL (575) 234-3341 CARLSBAD, NEW MEXICO

