

District I  
1625 N. French Dr., Hobbs, NM 88240  
Phone: (575) 393-6161 Fax: (575) 393-0720  
District II  
811 S. First St., Artesia, NM 88210  
Phone: (575) 748-1283 Fax: (575) 748-9720  
District III  
1000 Rio Brazos Road, Aztec, NM 87410  
Phone: (505) 334-6178 Fax: (505) 334-6170  
District IV  
1220 S. St. Francis Dr., Santa Fe, NM 87505  
Phone: (505) 476-3460 Fax: (505) 476-3462

State of New Mexico  
Energy, Minerals & Natural Resources **HOBBS OCD**  
Department  
OIL CONSERVATION DIVISION **JUN 01 2015**  
1220 South St. Francis Dr.  
Sante Fe, NM 87505

FORM C-102

Revised August 1, 2011

Submit one copy to appropriate

District Office

☐ AMENDED REPORT

RECEIVED

**2602 WELL LOCATION AND ACREAGE DEDICATION PLAT**

<sup>1</sup> API Number 30-025- <b>46202</b>	<sup>2</sup> Pool Code <del>17644</del> <b>96603</b>	<sup>3</sup> Pool Name <b>TRIGTE DRAWS</b> Bone Spring
<sup>4</sup> Property Code <b>714876</b>	<sup>5</sup> Property Name <b>PEGASUS 34 FED</b>	
<sup>6</sup> Well Number <b>#2H</b>	<sup>8</sup> Operator Name <b>EOG RESOURCES, INC.</b>	
<sup>7</sup> OGRID No. 7377	<sup>9</sup> Elevation <b>3624'</b>	

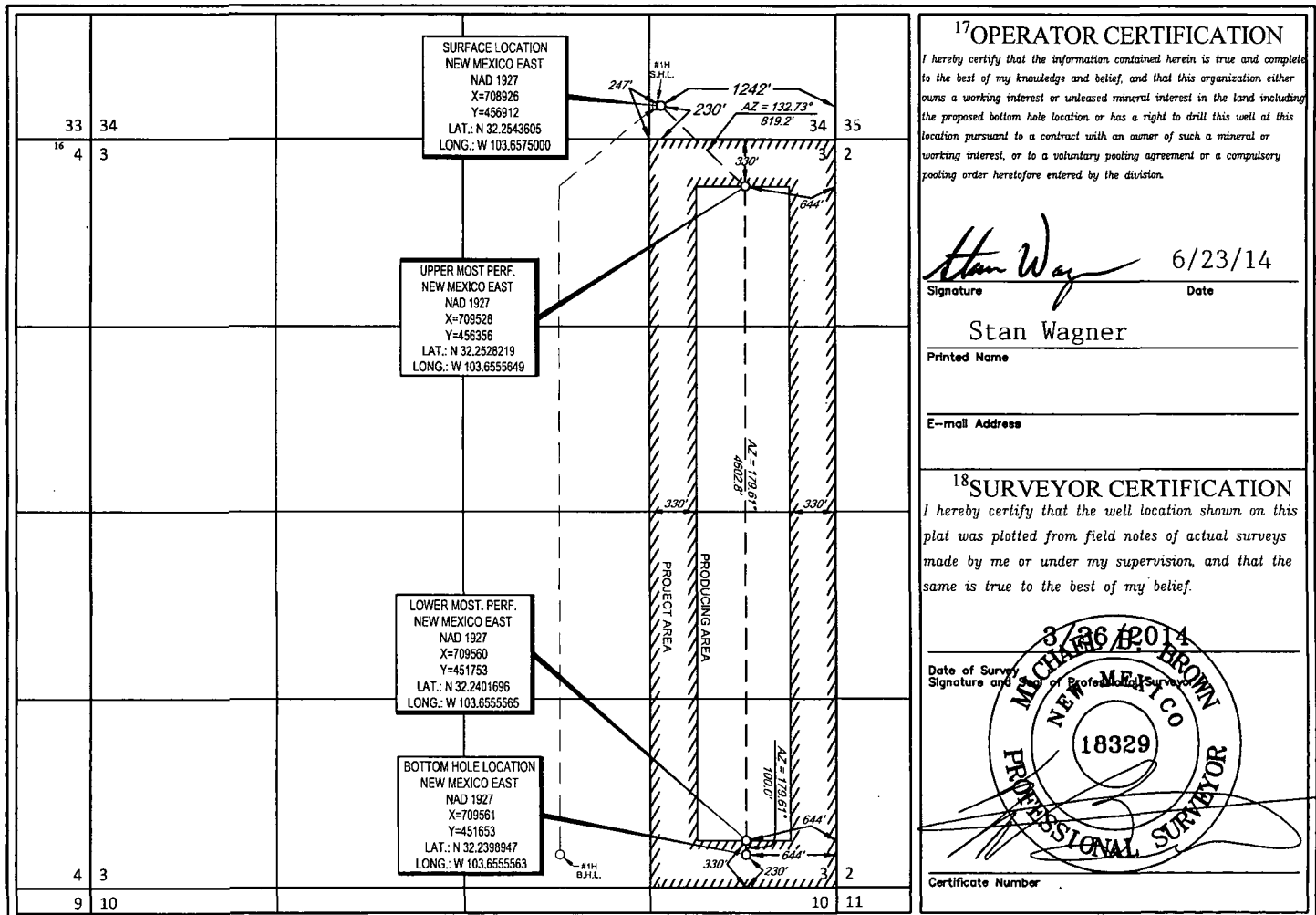
**<sup>10</sup>Surface Location**

UL or lot no.	Section	Township	Range	Lot Idn	Feet from the	North/South line	Feet from the	East/West line	County
P	34	23-S	32-E	-	230'	SOUTH	1242'	EAST	LEA

UL or lot no.	Section	Township	Range	Lot Idn	Feet from the	North/South line	Feet from the	East/West line	County
P	3	24-S	32-E	-	230'	SOUTH	644'	EAST	LEA

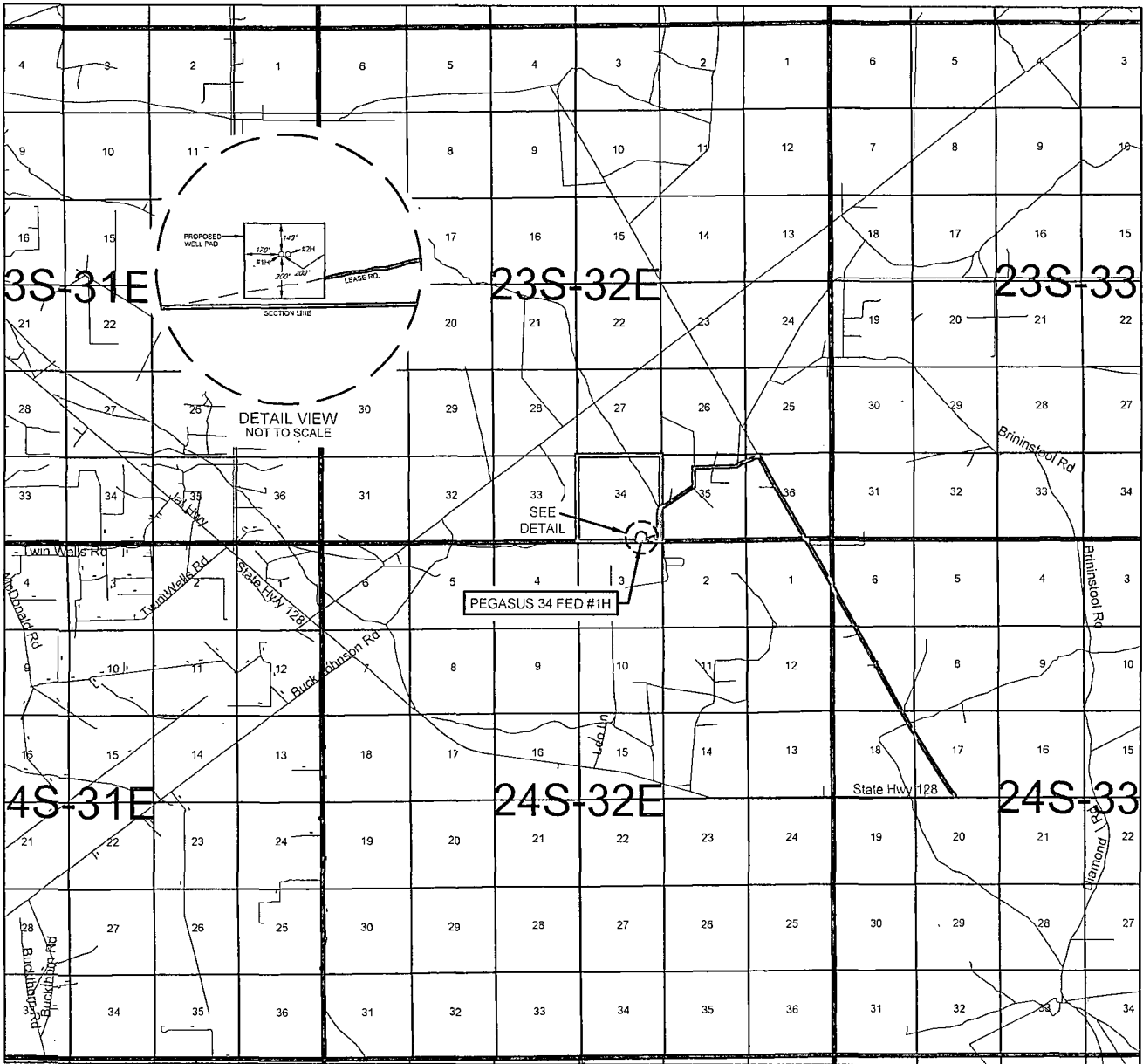
<sup>12</sup> Dedicated Acres 160	<sup>13</sup> Joint or Infill	<sup>14</sup> Consolidation Code	<sup>15</sup> Order No.
--------------------------------------	-------------------------------	----------------------------------	-------------------------

No allowable will be assigned to this completion until all interests have been consolidated or a non-standard unit has been approved by the division.



JUN 03 2015

EXHIBIT 2  
VICINITY MAP



LEASE NAME & WELL NO.: PEGASUS 34 FED #1H

SECTION 34 TWP 23-S RGE 32-E SURVEY N.M.P.M.

COUNTY LEA STATE NM

DESCRIPTION 234' FSL & 1272' FEL

DISTANCE & DIRECTION FROM INT. OF NM-18 N & NM-128, GO WEST  
ON NM-128 W ±25.5 MILES, THENCE NORTH (RIGHT) ON LEASE RD. ±4.6  
MILES, THENCE WEST (LEFT) ON LEASE RD ±0.6 MILES, THENCE SOUTH  
(LEFT) ON LEASE RD. ±0.2 MILES, THENCE SOUTHWEST (RIGHT) ON LEASE  
RD. ±0.8 MILES, THENCE WEST (RIGHT) ON LEASE RD. ±0.2 MILES TO A  
POINT ±140 FEET SOUTH OF THE LOCATION.

THIS EASEMENT/SERVITUDE LOCATION SHOWN HEREON HAS BEEN SURVEYED ON THE GROUND UNDER MY SUPERVISION AND PREPARED ACCORDING TO THE EVIDENCE FOUND AT THE TIME OF SURVEY, AND DATA PROVIDED BY EOG RESOURCES, INC. THIS CERTIFICATION IS MADE AND LIMITED TO THOSE PERSONS OR ENTITIES SHOWN ON THE FACE OF THIS PLAT AND IS NON-TRANSFERABLE. THIS SURVEY IS CERTIFIED FOR THIS TRANSACTION ONLY.

ALL BEARINGS, DISTANCES, AND COORDINATE VALUES CONTAINED HEREON ARE GRID BASED UPON THE NEW MEXICO STATE PLANE COORDINATE SYSTEM, EAST ZONE OF THE NORTH AMERICAN DATUM 1927, U.S. SURVEY FEET.



SCALE: 1" = 10000'  
 0' 5000' 10000'



**TOPOGRAPHIC**  
 LOYALTY INNOVATION LEGACY

1400 EVERMAN PARKWAY, Ste. 197 • FT. WORTH, TEXAS 76140

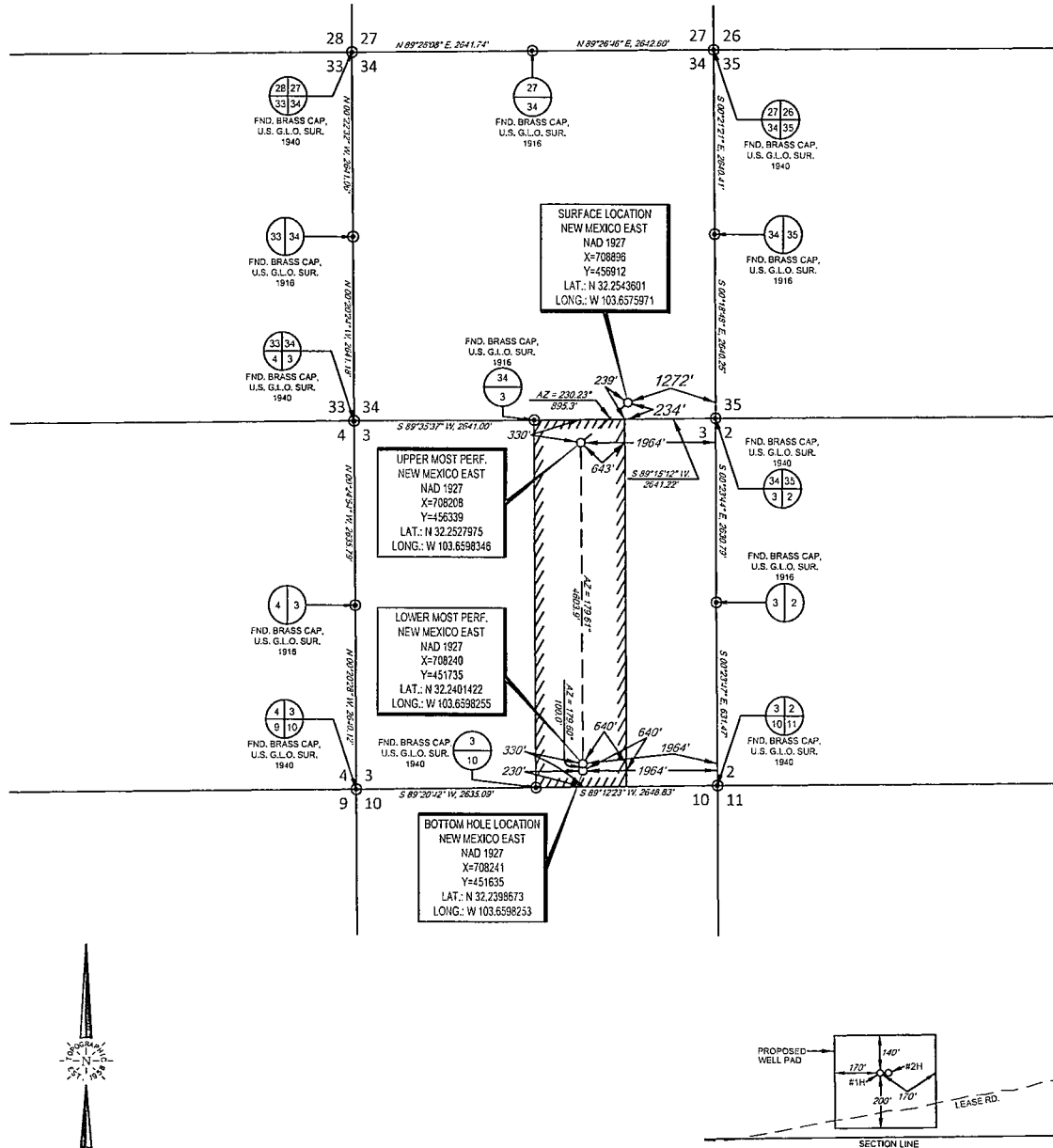
TELEPHONE: (817) 744-7512 • FAX (817) 744-7548  
 2903 NORTH BIG SPRING • MIDLAND, TEXAS 79705

TELEPHONE: (432) 682-1653 OR (800) 767-1653 • FAX (432) 682-1743  
 WWW.TOPOGRAPHIC.COM



## EXHIBIT 2A

SECTION 34, TOWNSHIP 23 SOUTH, RANGE 32 EAST, N.M.P.M.  
LEA COUNTY, NEW MEXICO



SCALE: 1" = 2000'  
0' 1000' 2000'

DETAIL VIEW  
SCALE: 1" = 500'

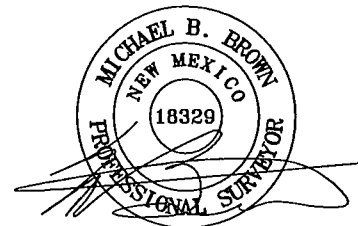
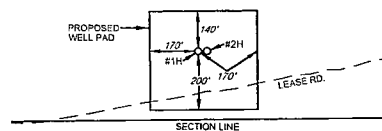
LEASE NAME & WELL NO.: PEGASUS 34 FED #1H

SECTION 34 TWP 23-S RGE 32-E SURVEY N.M.P.M.  
COUNTY LEA STATE NM  
DESCRIPTION 234' FSL & 1272' FEL

DISTANCE & DIRECTION FROM INT. OF NM-18 N & NM-128, GO WEST  
ON NM-128 W ±25.5 MILES, THENCE NORTH (RIGHT) ON LEASE RD. ±4.6  
MILES, THENCE WEST (LEFT) ON LEASE RD ±0.6 MILES, THENCE SOUTH  
(LEFT) ON LEASE RD. ±0.2 MILES, THENCE SOUTHWEST (RIGHT) ON LEASE  
RD. ±0.8 MILES, THENCE WEST (RIGHT) ON LEASE RD. ±0.2 MILES TO A  
POINT ±140 FEET SOUTH OF THE LOCATION.

ALL BEARINGS, DISTANCES, AND COORDINATE VALUES CONTAINED HEREON ARE GRID  
BASED UPON THE NEW MEXICO STATE PLANE COORDINATE SYSTEM, EAST ZONE OF THE  
NORTH AMERICAN DATUM 1927, U.S. SURVEY FEET

THIS EASEMENT/SERVITUDE LOCATION SHOWN HEREON HAS BEEN SURVEYED ON THE GROUND  
UNDER MY SUPERVISION AND PREPARED ACCORDING TO THE EVIDENCE FOUND AT THE TIME OF  
SURVEY, AND DATA PROVIDED BY EOG RESOURCES, INC. THIS CERTIFICATION IS MADE AND LIMITED  
TO THOSE PERSONS OR ENTITIES SHOWN ON THE FACE OF THIS PLAT AND IS NON-TRANSFERABLE.  
THIS SURVEY IS CERTIFIED FOR THIS TRANSACTION ONLY.



Michael Blake Brown, P.S. No. 18329  
APRIL 9, 2014

**TOPOGRAPHIC**  
LOYALTY INNOVATION LEGACY

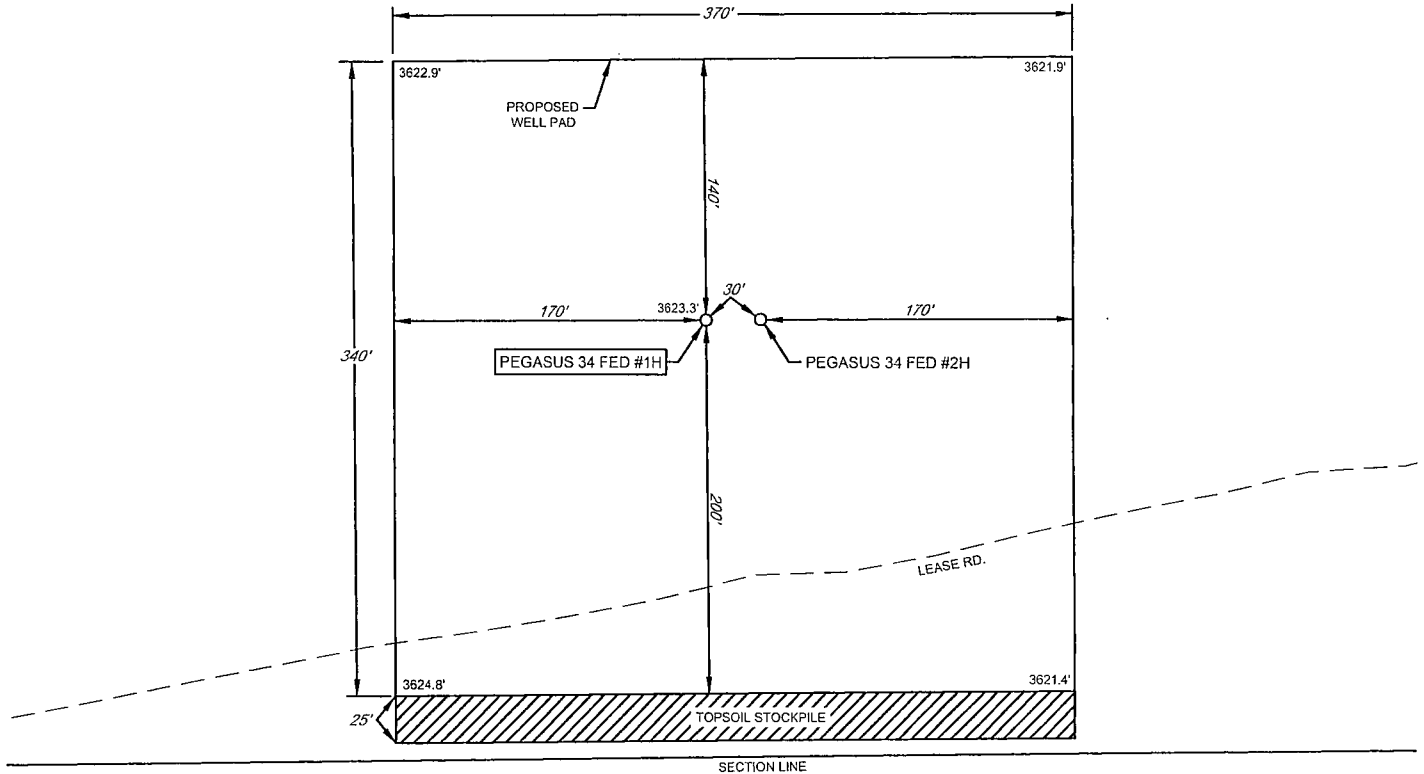
1400 EVERMAN PARKWAY, Ste. 187 • FT. WORTH, TEXAS 76140  
TELEPHONE: (817) 744-7512 • FAX (817) 744-7548  
2503 NORTH BIG SPRING • MIDLAND, TEXAS 79705  
TELEPHONE: (432) 682-1653 OR (800) 767-1653 • FAX (432) 682-1743  
WWW.TOPOGRAPHIC.COM



## EXHIBIT 2B

SECTION 34, TOWNSHIP 23 SOUTH, RANGE 32 EAST, N.M.P.M.  
LEA COUNTY, NEW MEXICO

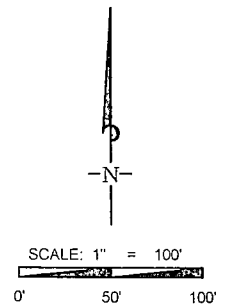
DETAIL VIEW  
SCALE: 1" = 100'



LEASE NAME & WELL NO.: PEGASUS 34 FED #1H  
#1H LATITUDE N 32.2543601 #1H LONGITUDE W 103.6575971

### LEGEND

== == == == == EXISTING ROAD  
— — — — — SECTION LINE  
——— ———— EXISTING PIPELINE



ALL BEARINGS, DISTANCES, AND COORDINATE VALUES CONTAINED HEREON ARE GRID  
BASED UPON THE NEW MEXICO STATE PLANE COORDINATE SYSTEM, EAST ZONE OF THE  
NORTH AMERICAN DATUM 1927, U.S. SURVEY FEET

THIS PROPOSED PAD SITE LOCATION SHOWN HEREON HAS BEEN SURVEYED ON THE GROUND UNDER  
MY SUPERVISION AND PREPARED ACCORDING TO THE EVIDENCE FOUND AT THE TIME OF SURVEY,  
AND DATA PROVIDED BY EOG RESOURCES, INC. THIS CERTIFICATION IS MADE AND LIMITED TO THOSE  
PERSONS OR ENTITIES SHOWN ON THE FACE OF THIS PLAT AND IS NON-TRANSFERABLE. THIS  
SURVEY IS CERTIFIED FOR THIS TRANSACTION ONLY.



1400 EVERMAN PARKWAY, Ste. 197 • FT. WORTH, TEXAS 76140  
TELEPHONE: (817) 744-7512 • FAX (817) 744-7548  
2903 NORTH BIG SPRING • MIDLAND, TEXAS 79705  
TELEPHONE: (432) 682-1653 OR (800) 767-1653 • FAX (432) 682-1743  
WWW.TOPOGRAPHIC.COM

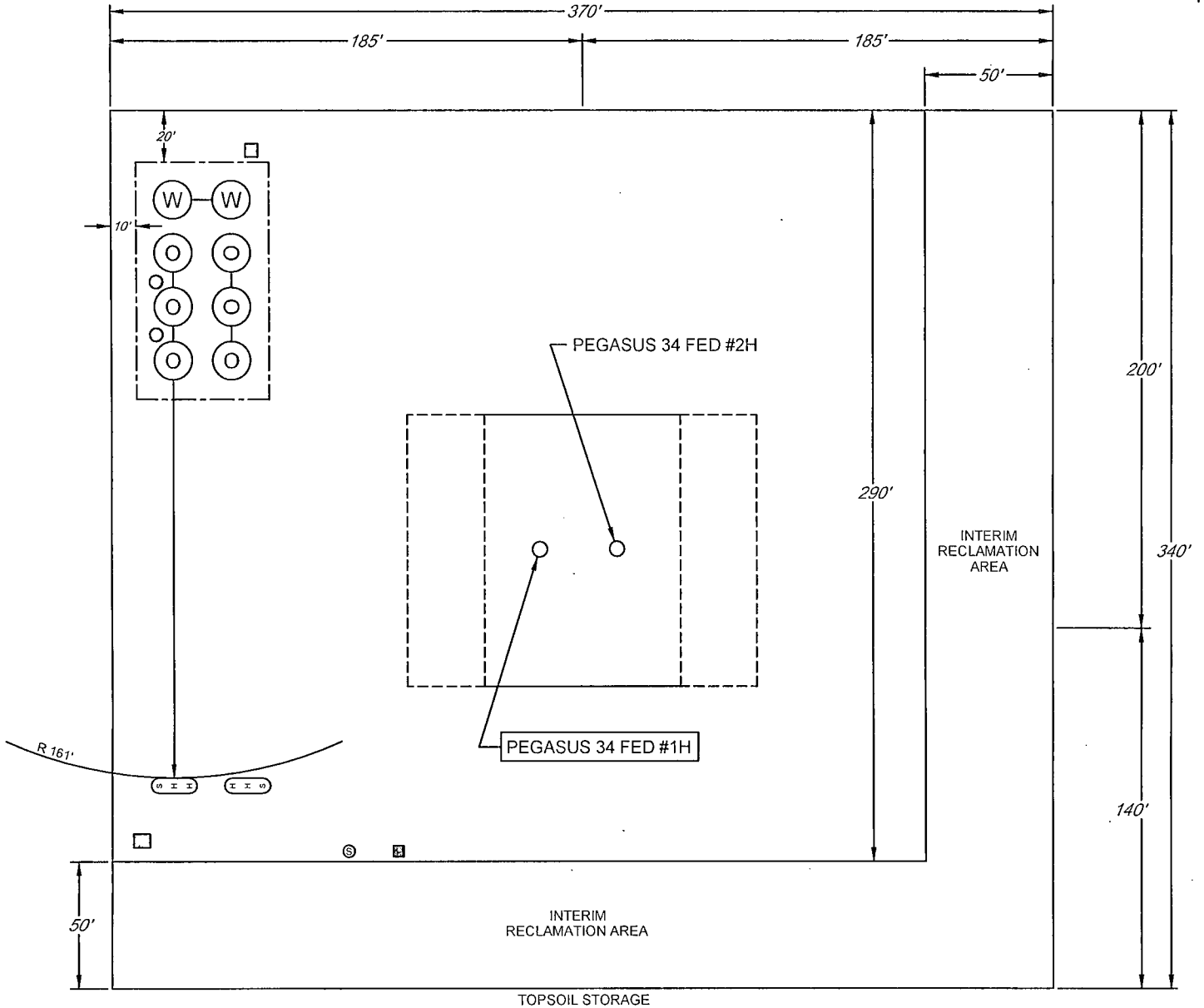
ORIGINAL DOCUMENT SIZE: 8.5" X 11"

# EXHIBIT 2C

## RECLAMATION AND FACILITY DIAGRAM - PRODUCTION FACILITIES DIAGRAM

SECTION 34, TOWNSHIP 23 SOUTH, RANGE 32 EAST, N.M.P.M.  
LEA COUNTY, NEW MEXICO

DETAIL VIEW  
SCALE: 1" = 60'

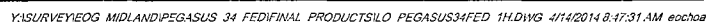


LEASE NAME & WELL NO.: PEGASUS 34 FED #1H  
#1H LATITUDE N 32.2543601 #1H LONGITUDE W 103.6575971

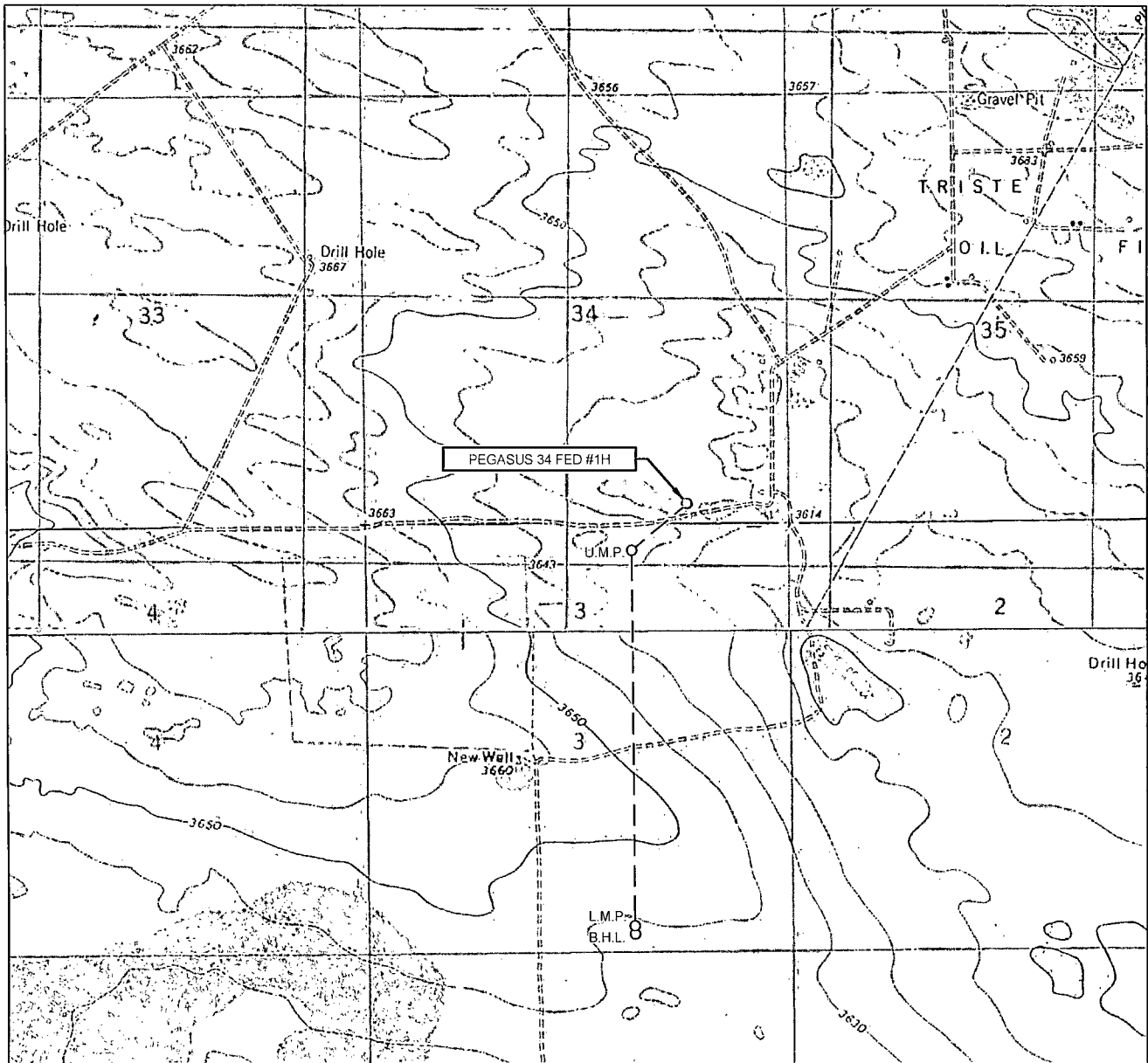
### LEGEND

	500 BBL OIL TANK		FLARE SEPARATOR
	500 BBL WATER TANK		VRU
	36 x 15 HEATER/ SEPARATOR		48 X 25 VRT
			FP FLARE
			OP FLARE

SECTION 34, TOWNSHIP 23 SOUTH, RANGE 32 EAST, N.M.P.M.  
LEA COUNTY, NEW MEXICO



# LOCATION & ELEVATION VERIFICATION MAP



LEASE NAME & WELL NO.: PEGASUS 34 FED #1H

SECTION 34 TWP 23-S RGE 32-E SURVEY N.M.P.M.  
 COUNTY LEA STATE NM ELEVATION 3623'  
 DESCRIPTION 234' FSL & 1272' FEL

LATITUDE N 32.2543601 LONGITUDE W 103.6575971



SCALE: 1" = 2000'  
 0' 1000' 2000'

THIS EASEMENT/SERVITUDE LOCATION SHOWN HEREON HAS BEEN SURVEYED ON THE GROUND UNDER MY SUPERVISION AND PREPARED ACCORDING TO THE EVIDENCE FOUND AT THE TIME OF SURVEY, AND DATA PROVIDED BY EOG RESOURCES, INC. THIS CERTIFICATION IS MADE AND LIMITED TO THOSE PERSONS OR ENTITIES SHOWN ON THE FACE OF THIS PLAT AND IS NON-TRANSFERABLE. THIS SURVEY IS CERTIFIED FOR THIS TRANSACTION ONLY.

ALL BEARINGS, DISTANCES, AND COORDINATE VALUES CONTAINED HEREON ARE GRID BASED UPON THE NEW MEXICO STATE PLANE COORDINATE SYSTEM, EAST ZONE OF THE NORTH AMERICAN DATUM 1927, U.S. SURVEY FEET.



**TOPOGRAPHIC**  
 LOYALTY INNOVATION LEGACY

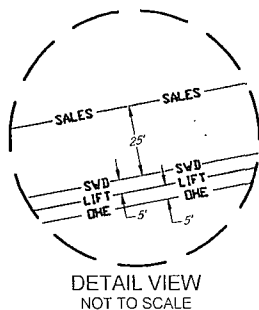
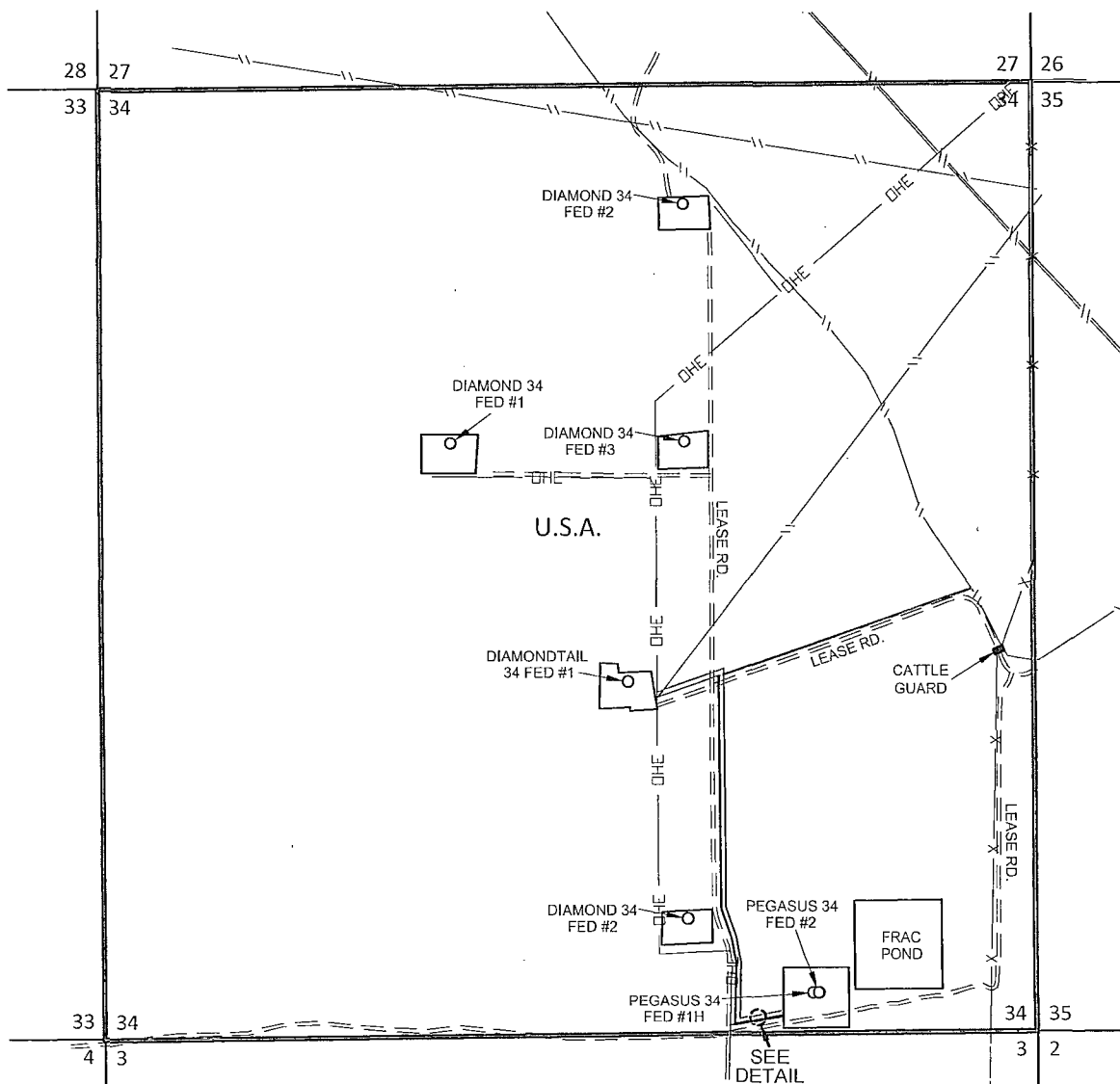
1400 EVERMAN PARKWAY, Ste. 197 • FT. WORTH, TEXAS 76140  
 TELEPHONE: (817) 744-7512 • FAX (817) 744-7548  
 2903 NORTH BIG SPRING • MIDLAND, TEXAS 79705  
 TELEPHONE: (432) 682-1653 OR (800) 767-1653 • FAX (432) 682-1743  
 WWW.TOPOGRAPHIC.COM

SCALE 1" = 1000'  
0' 500' 1000'

# EXHIBIT 5

SECTION 34, TOWNSHIP 24 SOUTH, RANGE 32 EAST, N.M.P.M.  
LEA COUNTY, NEW MEXICO

## PEGASUS 34 FED #1H-#2H INFRASTRUCTURE MAP



- SVD** 2-4" POLY SWD LINES  
-TOTAL FOOTAGE 3,755 FT  
-(WORKING PRESSURE 75-125 PSI)  
PEGASUS 34 FED #1H & #2H ..... 3,755 FT
- LIFT** 1-4" POLY GAS LIFT LINE  
-TOTAL FOOTAGE 2,619 FT  
-(WORKING PRESSURE 75-125 PSI)  
PEGASUS 34 FED #1H & #2H ..... 2,619 FT
- DHE** ELECTRIC LINE  
-TOTAL FOOTAGE 306 FT  
PEGASUS 34 FED #1H & #2H ..... 306 FT
- SALES** 4" GAS SALES LINE  
-TOTAL FOOTAGE 2,624 FT  
-(WORKING PRESSURE 75-125 PSI)  
PEGASUS 34 FED #1H & #2H ..... 2,624 FT

PEGASUS 34 FED #1H-#2H INFRASTRUCTURE MAP	REVISION:	
	INT	DATE
DATE: 06/20/14		
FILE: SK_PEGASUS_SEC_34_INFRASTRUCTURE		
DRAWN BY: A.C.C.		
SHEET: 1 OF 1		