

JUN 10 2015

District I
1625 N. French Dr., Hobbs, NM 88240
Phone: (575) 393-6161 Fax: (575) 393-0720
District II
811 S. First St., Artesia, NM 88210
Phone: (575) 748-1283 Fax: (575) 748-9720
District III
1000 Rio Brazos Road, Aztec, NM 87410
Phone: (505) 334-6178 Fax: (505) 334-6170
District IV
1220 S. St. Francis Dr., Santa Fe, NM 87505
Phone: (505) 476-3460 Fax: (505) 476-3462

State of New Mexico
Energy, Minerals & Natural Resources Department
OIL CONSERVATION DIVISION
1220 South St. Francis Dr.
Santa Fe, NM 87505

RECEIVED

Form C-102

Revised August 1, 2011

Submit one copy to appropriate

District Office

☐ AMENDED REPORT

WELL LOCATION AND ACREAGE DEDICATION PLAT

¹ API Number 30-025-42624	² Pool Code 97838	³ Pool Name Jennings; Upper Bone Spring Shale
⁴ Property Code 39989	⁵ Property Name VAN DOO DAH 33 FED	⁶ Well Number 3H
⁷ OGRID No. 6137	⁸ Operator Name DEVON ENERGY PRODUCTION COMPANY, L.P.	⁹ Elevation 3317.2

¹⁰ Surface Location

UL or lot no.	Section	Township	Range	Lot Idn	Feet from the	North/South line	Feet from the	East/West line	County
P	33	25 S	32 E		200	SOUTH	610	EAST	LEA

¹¹ Bottom Hole Location If Different From Surface

UL or lot no.	Section	Township	Range	Lot Idn	Feet from the	North/South line	Feet from the	East/West line	County
A	33	25 S	32 E		330	NORTH	400	EAST	LEA

¹² Dedicated Acres 160 ac	¹³ Joint or Infill	¹⁴ Consolidation Code	¹⁵ Order No.
---	-------------------------------	----------------------------------	-------------------------

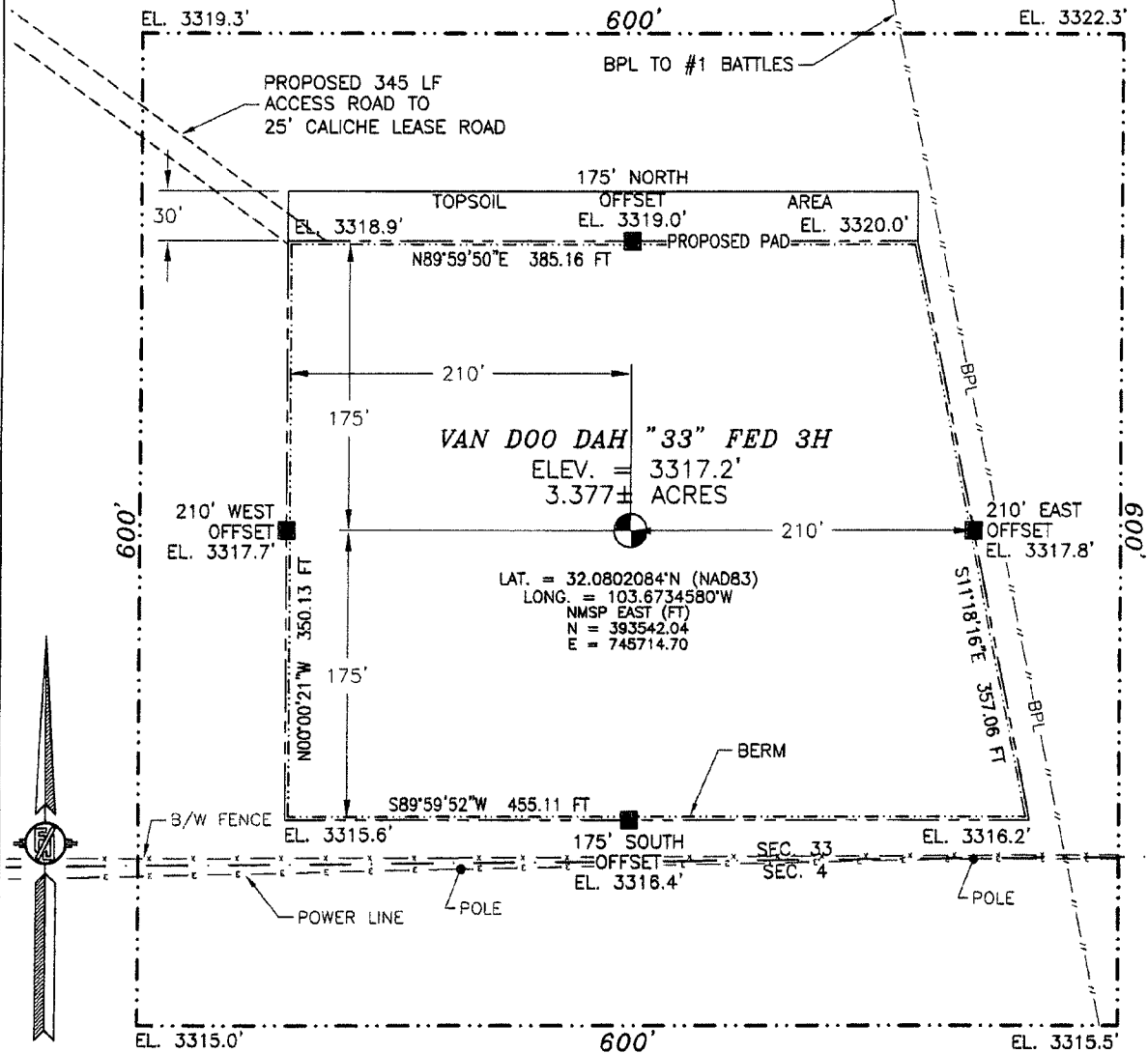
No allowable will be assigned to this completion until all interests have been consolidated or a non-standard unit has been approved by the division.

<p>N89°33'45"E 2656.07 FT</p> <p>NW CORNER SEC. 33 LAT. = 32.0941331°N LONG. = 103.6886262°W NMSP EAST (FT) N = 398579.22 E = 740986.41</p> <p>W Q CORNER SEC. 33 LAT. = 32.0868667°N LONG. = 103.6886534°W NMSP EAST (FT) N = 395935.76 E = 740993.81</p> <p>NOTE: LATITUDE AND LONGITUDE COORDINATES ARE SHOWN USING THE NORTH AMERICAN DATUM OF 1983 (NAD83). LISTED NEW MEXICO STATE PLANE EAST COORDINATES ARE GRID (NAD83). BASIS OF BEARING AND DISTANCES USED ARE NEW MEXICO STATE PLANE EAST COORDINATES MODIFIED TO THE SURFACE.</p>		<p>N89°17'08"E 2659.49 FT</p> <p>N Q CORNER SEC. 33 LAT. = 32.0941449°N LONG. = 103.6800514°W NMSP EAST (FT) N = 398599.50 E = 743641.83</p> <p>NE CORNER SEC. 33 LAT. = 32.0941915°N LONG. = 103.6714657°W 400' NMSP EAST (FT) N = 398632.65 E = 746300.54</p> <p>BOTTOM OF HOLE LAT. = 32.0932776°N LONG. = 103.6727584°W NMSP EAST (FT) N = 398297.73 E = 745902.25</p> <p>E Q CORNER SEC. 33 LAT. = 32.0869362°N LONG. = 103.6714764°W NMSP EAST (FT) N = 395993.26 E = 746313.42</p>		<p>¹⁷ OPERATOR CERTIFICATION I hereby certify that the information contained herein is true and complete to the best of my knowledge and belief, and that this organization either owns a working interest or unleased mineral interest in the land including the proposed bottom hole location or has a right to drill this well at this location pursuant to a contract with an owner of such a mineral or working interest, or to a voluntary pooling agreement or a compulsory pooling order heretofore entered by the division.</p> <p><i>Trina C. Couch</i> 12/4/14 Signature Date Trina C. Couch, Regulatory Analyst Printed Name trina.couch@dmn.com E-mail Address</p>	
<p>S89°29'31"W 2661.05 FT</p> <p>S Q CORNER SEC. 33 LAT. = 32.0796430°N LONG. = 103.6800793°W NMSP EAST (FT) N = 393323.87 E = 743665.13</p> <p>SE CORNER SEC. 33 LAT. = 32.0796633°N LONG. = 103.6714898°W NMSP EAST (FT) N = 393347.47 E = 746325.50</p> <p>SURFACE LOCATION</p>		<p>¹⁸ SURVEYOR CERTIFICATION I hereby certify that the well location shown on this plat was plotted from field notes of actual surveys made by me or under my supervision, and that the same is true and correct to the best of my belief.</p> <p>OCTOBER 10, 2014 Date of Survey <i>[Signature]</i> Signature and Seal of Surveyor Certificate Number: 1156003, JACARILLO, PLS 12797 SURVEY NO. 3341</p>			

JUN 10 2015

SECTION 33, TOWNSHIP 25 SOUTH, RANGE 32 EAST, N.M.P.M.
LEA COUNTY, STATE OF NEW MEXICO
SITE MAP

NOTE: LATITUDE AND LONGITUDE COORDINATES ARE SHOWN USING THE NORTH AMERICAN DATUM OF 1983 (NAD83). LISTED NEW MEXICO STATE PLANE EAST COORDINATES ARE GRID (NAD83). BASIS OF BEARING AND DISTANCES USED ARE NEW MEXICO STATE PLANE EAST COORDINATES MODIFIED TO THE SURFACE



010 50 100 200

SCALE 1" = 100'

DIRECTIONS TO LOCATION

FROM THE INTERSECTION OF STATE HIGHWAY 128 (JAL HIGHWAY) AND CR 1 (ORLA ROAD) GO SOUTH ON CR 1 ABOUT 9.2 MILES TO CALICHE LEASE ROAD ON RIGHT. GO WEST ON CALICHE LEASE ROAD ABOUT 0.28 MILES. SITE IS ON LEFT, FOLLOW FLAGS IN SOUTHEAST DIRECTION 345' TO THE NORTHWEST CORNER OF PROPOSED PAD.

DEVON ENERGY PRODUCTION COMPANY, L.P.

VAN DOO DAH "33" FED 3H

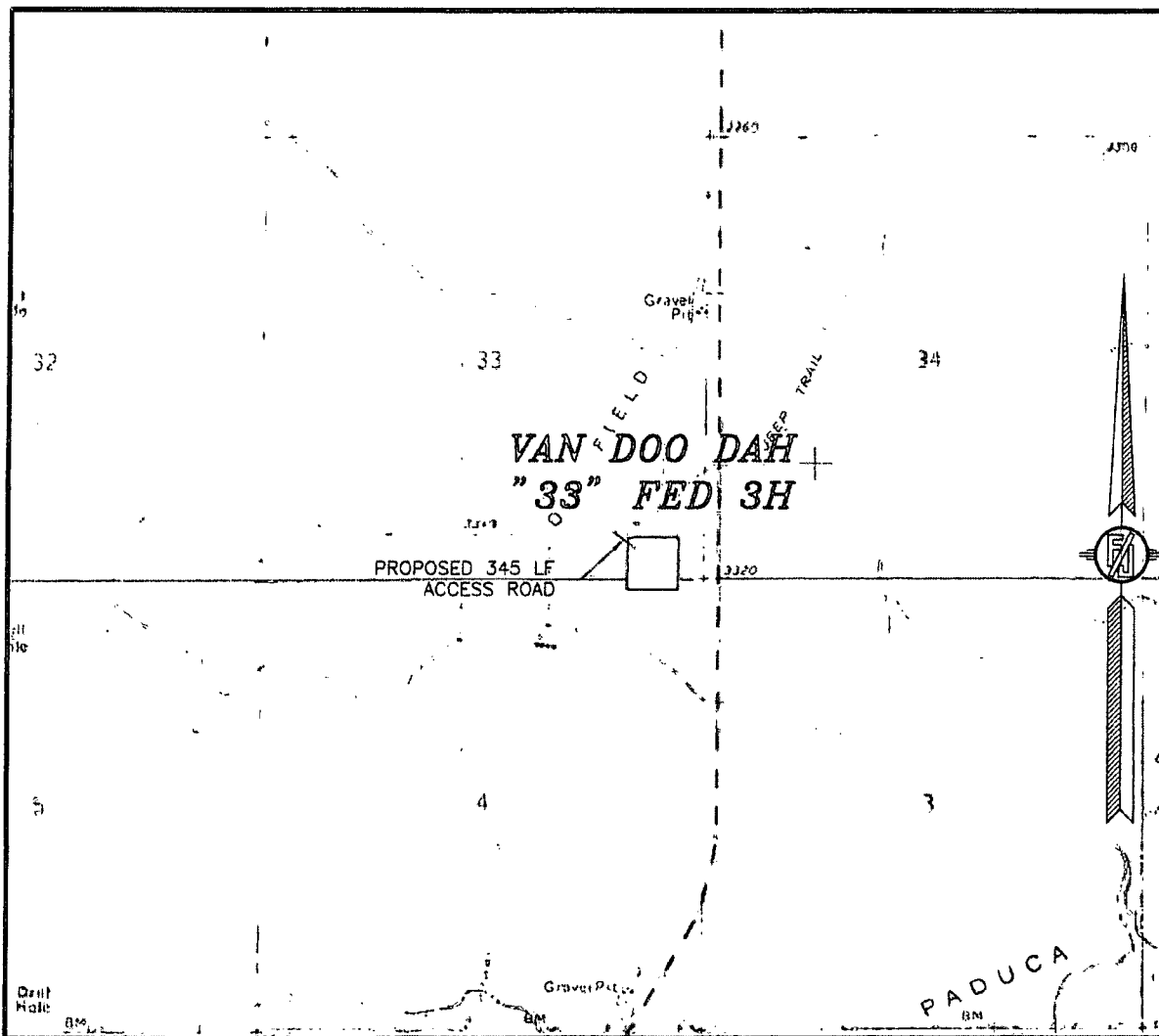
LOCATED 200 FT. FROM THE SOUTH LINE
AND 610 FT. FROM THE EAST LINE OF
SECTION 33, TOWNSHIP 25 SOUTH,
RANGE 32 EAST, N.M.P.M.
LEA COUNTY, STATE OF NEW MEXICO

OCTOBER 10, 2014

SURVEY NO. 3341

MADRON SURVEYING, INC. 301 SOUTH CANAL (575) 214-3341 CARLSBAD, NEW MEXICO

SECTION 33, TOWNSHIP 25 SOUTH, RANGE 32 EAST, N.M.P.M.
LEA COUNTY, STATE OF NEW MEXICO
LOCATION VERIFICATION MAP



USGS QUAD MAP:
PADUCA BREAKS WEST

NOT TO SCALE

DEVON ENERGY PRODUCTION COMPANY, L.P.
VAN DOO DAH "33" FED 3H
LOCATED 200 FT. FROM THE SOUTH LINE
AND 610 FT. FROM THE EAST LINE OF
SECTION 33, TOWNSHIP 25 SOUTH,
RANGE 32 EAST, N.M.P.M.
LEA COUNTY, STATE OF NEW MEXICO

OCTOBER 10, 2014

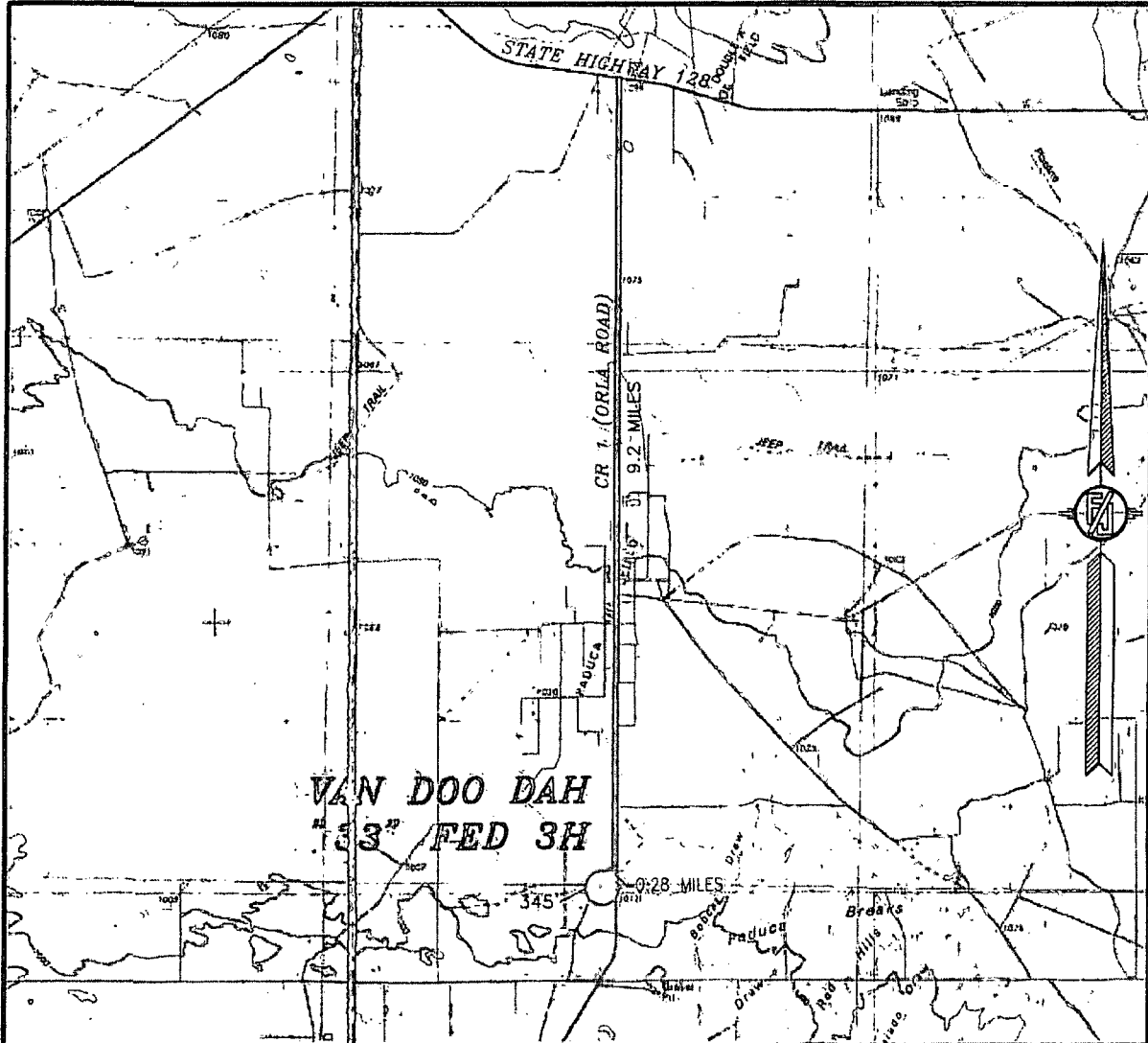
MADRON SURVEYING, INC.

301 SOUTH CANAL
(575) 234-3341

CARLSBAD, NEW MEXICO

SURVEY NO. 3341

SECTION 33, TOWNSHIP 25 SOUTH, RANGE 32 EAST, N.M.P.M.
LEA COUNTY, STATE OF NEW MEXICO
VICINITY MAP



DISTANCES IN MILES

NOT TO SCALE

DEVON ENERGY PRODUCTION COMPANY, L.P.

VAN DOO DAH "33" FED 3H

LOCATED 200 FT. FROM THE SOUTH LINE

AND 610 FT. FROM THE EAST LINE OF

SECTION 33, TOWNSHIP 25 SOUTH,

RANGE 32 EAST, N.M.P.M.

LEA COUNTY, STATE OF NEW MEXICO

DIRECTIONS TO LOCATION

FROM THE INTERSECTION OF STATE HIGHWAY 128 (JAL HIGHWAY) AND CR 1 (ORLA ROAD) GO SOUTH ON CR 1 ABOUT 9.2 MILES TO CALICHE LEASE ROAD ON RIGHT. GO WEST ON CALICHE LEASE ROAD ABOUT 0.28 MILES. SITE IS ON LEFT, FOLLOW FLAGS IN SOUTHEAST DIRECTION 345' TO THE NORTHWEST CORNER OF PROPOSED PAD.

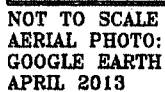
OCTOBER 10, 2014

SURVEY NO. 3341

MADRON SURVEYING, INC. 301 SOUTH CANAL (575) 234-3341

CARLSBAD, NEW MEXICO

One Mile Radius Map



VAN DOO DAH "33" FED 3H

LOCATED 200 FT. FROM THE SOUTH LINE
AND 610 FT. FROM THE EAST LINE OF
SECTION 33, TOWNSHIP 25 SOUTH,
RANGE 32 EAST, N.M.P.M.
LEA COUNTY, STATE OF NEW MEXICO

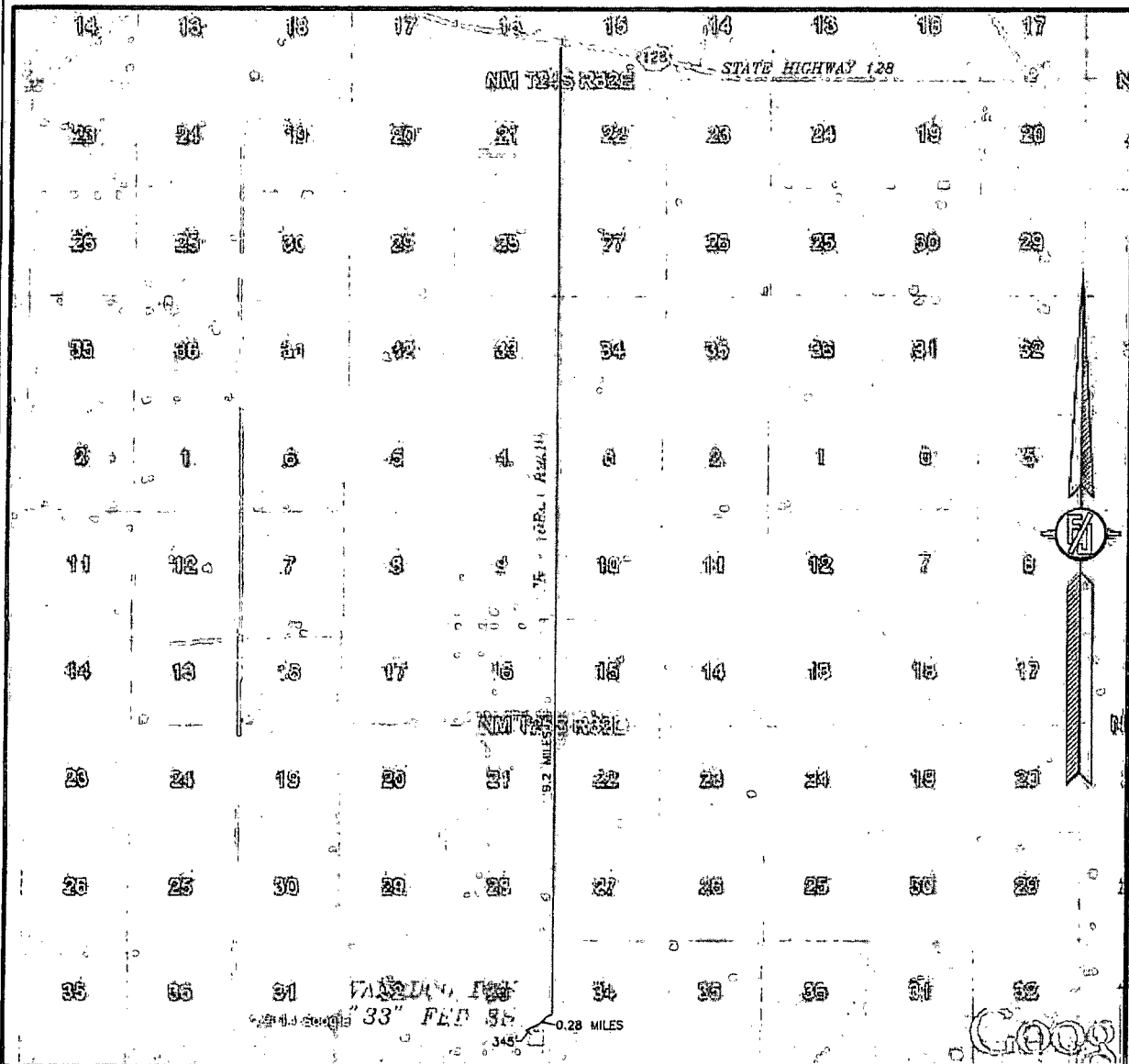
SURVEY NO. 3341

MADRON SURVEYING, INC.

301 SOUTH CANAL
(575) 234-3341

CARLSBAD, NEW MEXICO

SECTION 33, TOWNSHIP 25 SOUTH, RANGE 32 EAST, N.M.P.M.
LEA COUNTY, STATE OF NEW MEXICO
ACCESS AERIAL ROUTE MAP



NOT TO SCALE
AERIAL PHOTO:
GOOGLE EARTH
APRIL 2013

DEVON ENERGY PRODUCTION COMPANY, L.P.

VAN DOO DAH "33" FED 3H

LOCATED 200 FT. FROM THE SOUTH LINE
AND 610 FT. FROM THE EAST LINE OF
SECTION 33, TOWNSHIP 25 SOUTH,
RANGE 32 EAST, N.M.P.M.
LEA COUNTY, STATE OF NEW MEXICO

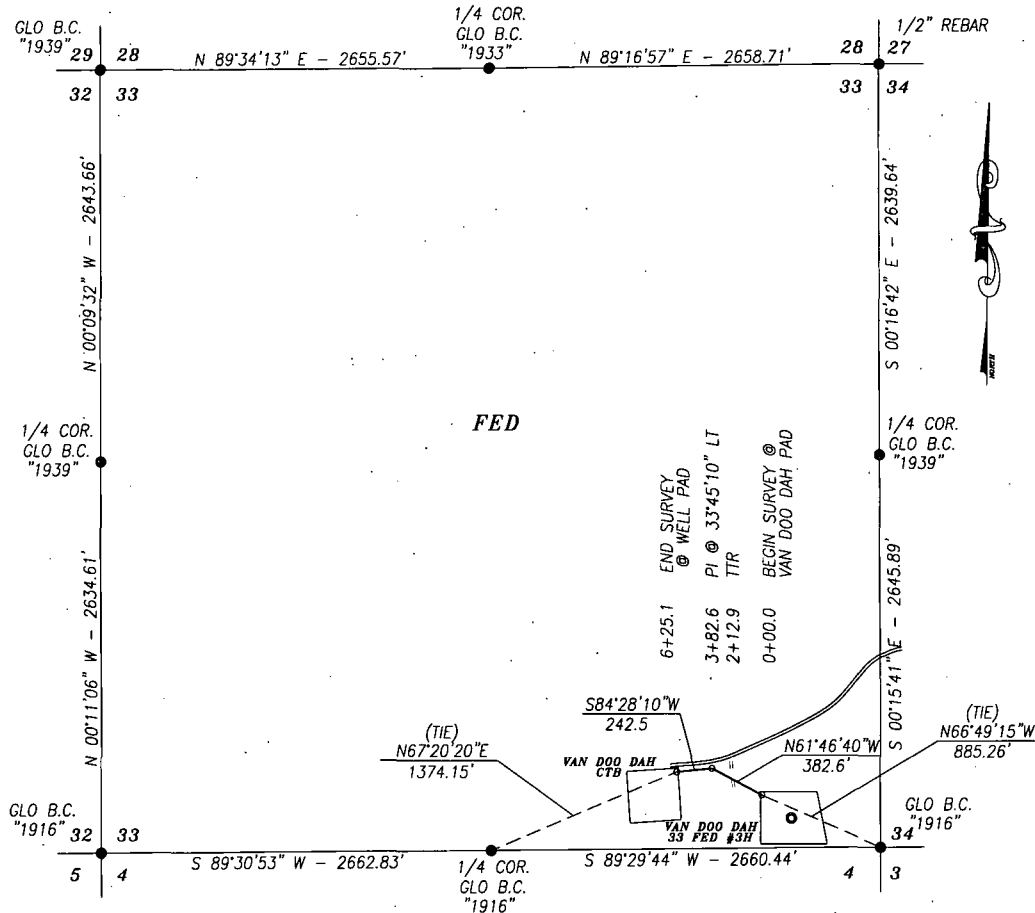
OCTOBER 10, 2014

SURVEY NO. 3341

MADRON SURVEYING, INC. 301 SOUTH CANAL CARLSBAD, NEW MEXICO
(575) 234-3341

**VAN DOO DAH FLOWLINE
DEVON ENERGY PRODUCTION COMPANY, L.P.**

A 4" BURIED POLY FLOWLINE FROM THE VAN DOO DAH 33 FEDERAL #3H TO THE VAN
DOO DAH CTB IN
SECTION 33, TOWNSHIP 25 SOUTH, RANGE 32 EAST, N.M.P.M.,
LEA COUNTY, NEW MEXICO.



DESCRIPTION

A STRIP OF LAND 30.0 FEET WIDE AND 625.1 FEET OR 37.88 RODS OR 0.1184 MILES IN LENGTH CROSSING FEE LAND IN SECTION 33, TOWNSHIP 25 SOUTH, RANGE 32 EAST, LEA COUNTY, NEW MEXICO AND BEING 15.0 FEET LEFT AND 15.0 FEET RIGHT OF THE ABOVE PLATTED CENTERLINE SURVEY.

BASIS OF BEARING:

BEARINGS SHOWN HEREON ARE MERCATOR GRID AND CONFORM TO THE NEW MEXICO COORDINATE SYSTEM "NEW MEXICO EAST ZONE" NORTH AMERICAN DATUM 1983. DISTANCES ARE GRID VALUES.

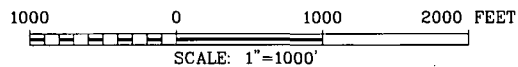
CERTIFICATION

I, CHAD HARCROW, A NEW MEXICO REGISTERED PROFESSIONAL SURVEYOR CERTIFY THAT I DIRECTED AND AM RESPONSIBLE FOR THIS SURVEY, THAT THIS SURVEY IS TRUE AND CORRECT TO THE BEST OF MY KNOWLEDGE AND BELIEF, AND THIS SURVEY AND PLAT MEET THE MINIMUM STANDARDS FOR SURVEYING IN NEW MEXICO.

HARCROW SURVEYING, LLC

2314 W. MAIN ST, ARTESIA, N.M. 88210
PH: (575) 746-2158 FAX: (575) 746-2158

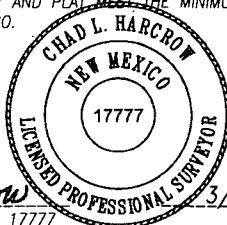
c.harcrow@harcrowsurveying.com



DEVON ENERGY PRODUCTION CO. L.P.

SURVEY OF A PROPOSED FLOWLINE LOCATED IN
SECTION 33, TOWNSHIP 25 SOUTH, RANGE 32 EAST,
LEA COUNTY, NMPM, NEW MEXICO

SURVEY DATE: MARCH 9, 2015	FLOWLINE
DRAFTING DATE: MARCH 23, 2015	PAGE 1 OF 4
APPROVED BY: CH	DRAWN BY: JJ
	FILE: 15-243

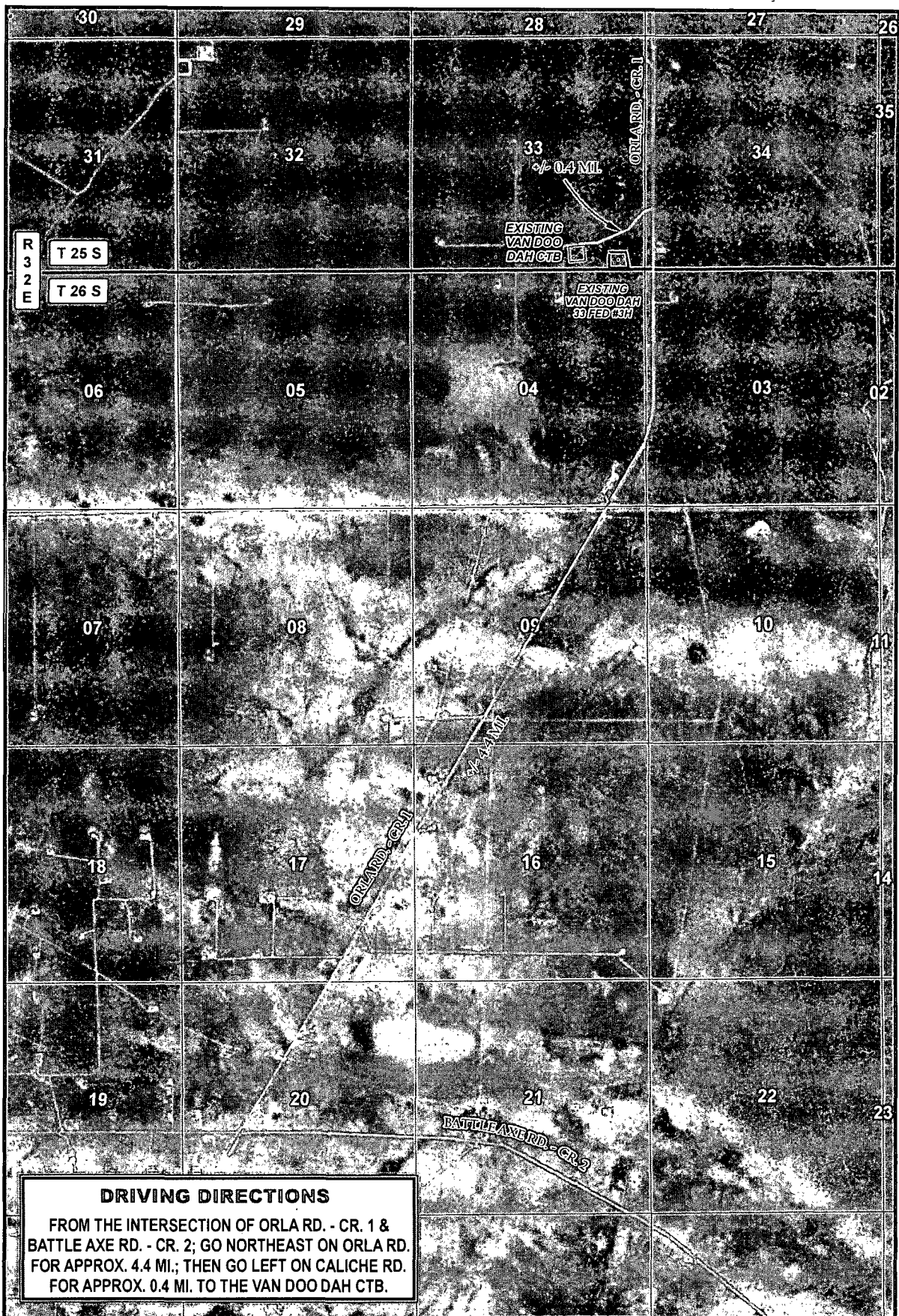


Chad Harcrow

CHAD HARCROW N.M.P.S. NO. 17777

DATE

3/29/15

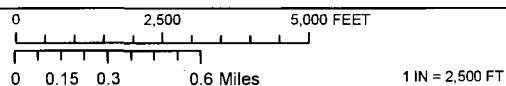


LEGEND

- PIPELINE
- WELL
- WELLPAD
- ▨ TANK BATTERY

VAN DOO DAH 33 FED #3H FLOWLINE

SECTION: 33 TOWNSHIP: 25 S. RANGE: 32 E.
 STATE: NEW MEXICO COUNTY: LEA SURVEY: N.M.P.M.
 W.O. # 15-243 LEASE: VAN DOO DAH 33 FED



DRIVING DIRECTIONS

IMAGERY

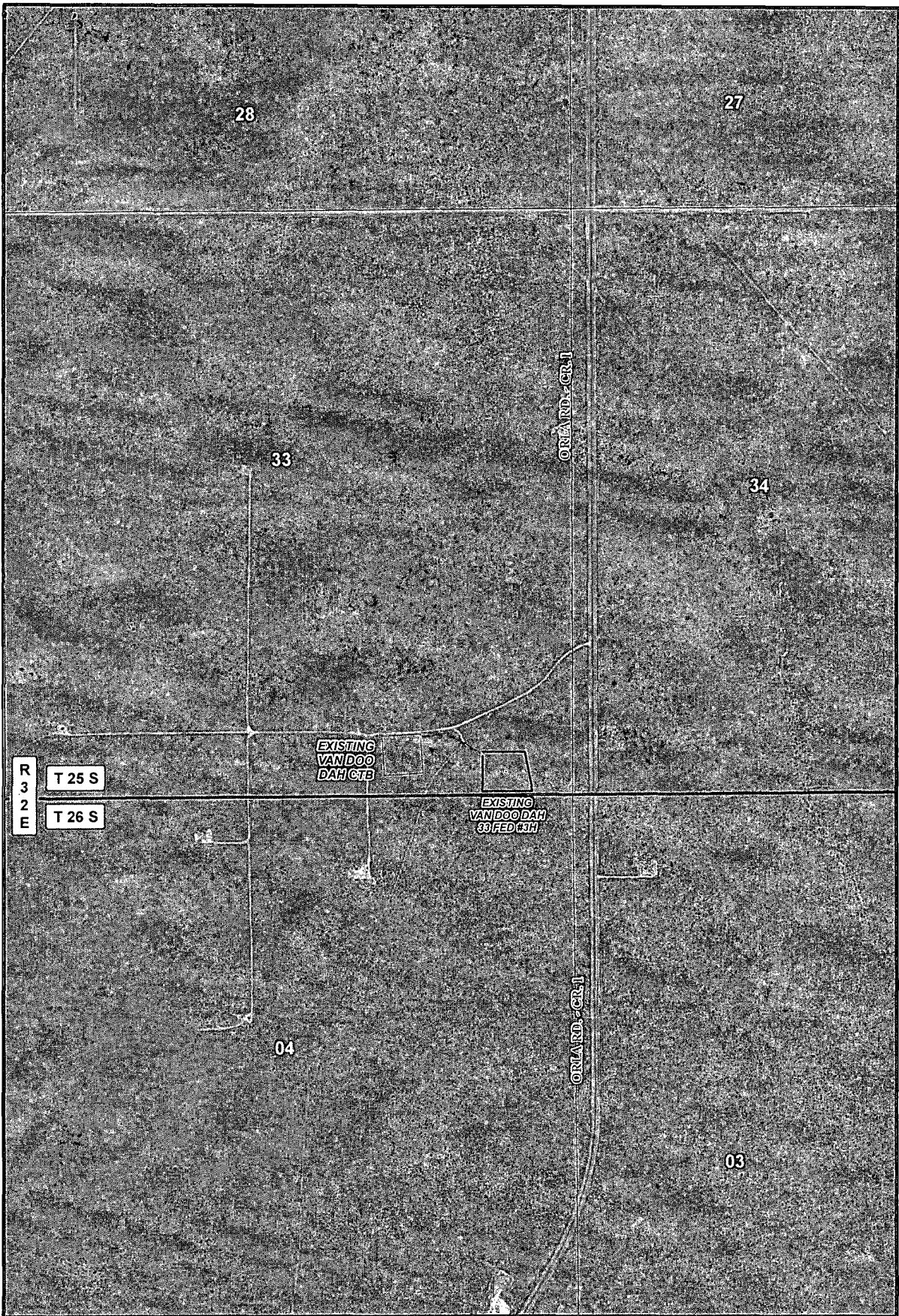
SP.

devon
 ENERGY PRODUCTION CO. L.P.

HARCROW SURVEYING, LLC.
 2314 W. MAIN ST, ARTESIA, NM 88210
 PH: (575) 746-2158 FAX: (575) 746-2158
 c.harcrow@harcrowsurveying.com

ORIG: 03/24/2015

PAGE: 2 OF 4

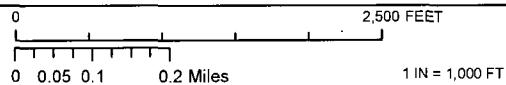


LEGEND

- PIPELINE
- WELL
- WELLPAD
- TANK BATTERY

VAN DOO DAH 33 FED #3H FLOWLINE

SECTION: 33 TOWNSHIP: 25 S. RANGE: 32 E.
 STATE: NEW MEXICO COUNTY: LEA SURVEY: N.M.P.M
 W.O. # 15-243 LEASE: VAN DOO DAH 33 FED



PIPELINE OVERVIEW

IMAGERY

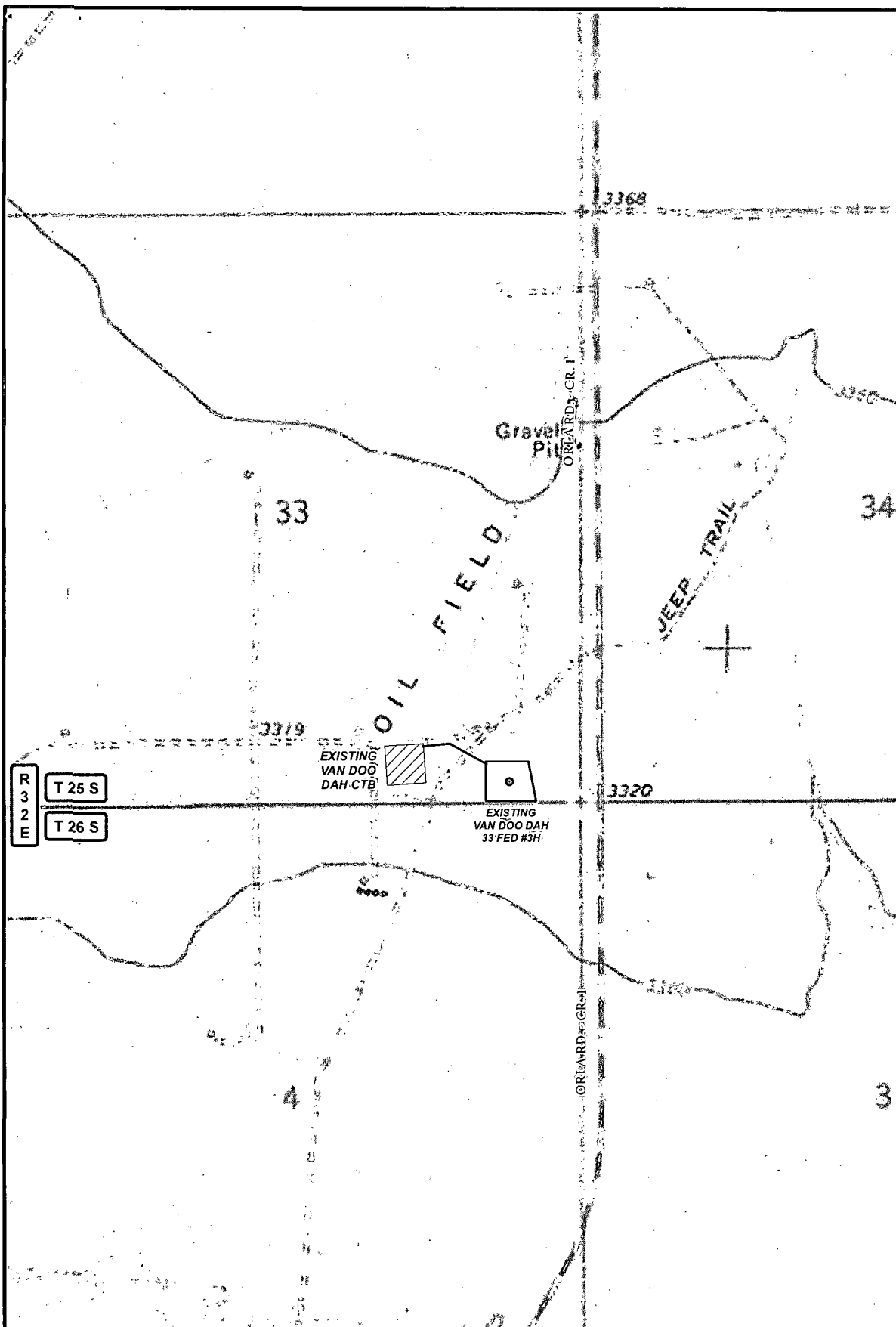
SP.

devon
ENERGY PRODUCTION CO. L.P.

HARCROW SURVEYING, LLC.
 2314 W. MAIN ST., ARTESIA, NM 88210
 PH: (575) 746-2158 FAX: (575) 746-2158
 c.harcrow@harcrowsurveying.com

ORIG: 03/24/2015

PAGE: 3 OF 4



<p>LEGEND</p> <p>— PIPELINE</p> <p>• WELL</p> <p>□ WELLPAD</p> <p>▨ TANK BATTERY</p> <p>□ PRIVATE</p> <p>□ STATE OF NM</p> <p>□ US BLM</p>	<p>VAN DOO DAH 33 FED #3H FLOWLINE</p> <p>SECTION: 33 TOWNSHIP: 25 S. RANGE: 32 E.</p> <p>STATE: NEW MEXICO COUNTY: LEA SURVEY: N.M.P.M</p> <p>W.O. # 15-243 LEASE: VAN DOO DAH 33 FED</p> <p>0 0.05 0.1 0.2 Miles 2,500 FEET 1 IN = 1,000 FT</p> <p>PIPELINE OVERVIEW LAND STATUS SP.</p>	<p>devon</p> <p>ENERGY PRODUCTION CO. L.P.</p> <p>HARCROW SURVEYING, LLC.</p> <p>2314 W. MAIN ST, ARTESIA, NM 88210</p> <p>PH: (575) 746-2158 FAX: (575) 746-2158</p> <p>c.harcrow@harcrowsurveying.com</p> <p>ORIG: 03/24/2015 PAGE: 4 OF 4</p>
---	---	--